



Volume 10 Issue 2

# Center News

A Newsletter for Federal Child Care Centers



Spring 2007

## The GSA Nationwide Network of Child Care Coordinators

### New England Region

Sherri Edwards  
617-565-7312

### Northeast/Caribbean Region

Magda Marcano  
212-264-1268

### Mid-Atlantic Region

Robyn Major  
215-446-2893

### Southeast Sunbelt Region

Janie Heisner  
404-331-4729

### Great Lakes Region

Connie Chidester  
312-886-0611

### The Heartland Region

Barbara Daniels  
816-823-2215

### Greater Southwest Region

BJ Upton  
817-978-8451

### Rocky Mountain Region

Jacki Fling  
303-236-8000 x 2264

### Pacific Rim Region

Lyvette Norris  
415-522-3350

### Northwest/Arctic Region

Jennifer Bashford  
253-931-7700

### National Capital Region

Leo Bonner  
202-401-7403

## Dedication at Rainforest Kids in Hato Rey, PR

Administrator Lurita Doan joined with Office of Child Care Director Eileen Stern and other federal and local officials, families, teachers and the children for a ribbon cutting ceremony celebrating the addition of a new classroom wing at the Rainforest Kids Child Development Center. The Center is located at the Federico Degetau Federal Building in Hato Rey, Puerto Rico, and serves the child care needs of both the nearby federal employees as well as those of the local community. It is the only private center in the Caribbean that is accredited by the National Association for the Education of Young Children (NAEYC).

In her remarks during the ceremony, Administrator Doan commented that providing worksite child care is one recruitment tool the government has to encourage young people to join and added that providing child care is "good for the children, good for their parents and good for a government workforce that will need to attract the best and brightest in the coming decades." She also pointed out that the good peace of mind parents have when their children are being well cared for helps to make them better workers.

The original facility opened in January, 2002 accommodating 74 full day children, along with an after school program. With demand for quality child care far exceeding the supply, GSA undertook an expansion project that added approximately 4,300 square feet, including four (4) new classrooms and a teachers' lounge, to the original layout of six classrooms and an interior courtyard playground. The facility now accommodates 110 full day children and 10 children in the after-school program.



Pictured from left to right  
**Adriana Irizarry** - Government of Puerto Rico, Director, Office of Children and Families,

**Lurita Doan** - GSA Administrator,

**Frances Rios de Moran** - Clerk of the Court, U.S. District Court for Puerto Rico



## NAEYC Update

All programs preparing candidacy and application materials should take advantage of the NAEYC website: [www.naeyc.org/selfstudy](http://www.naeyc.org/selfstudy)

This site posts clarifications and updates on accreditation criteria. Information on the preparation of classroom portfolios was recently updated.

The Classroom Portfolio documents classroom practices and events to provide current evidence of the implementation of the program standards and accreditation criteria. The Classroom Portfolio supplements the classroom observation and documents capacity to perform the criteria over time. In most instances, it is expected that the Classroom Portfolio will be developed for a specific classroom or group by the teaching team responsible for that group. **However, when the responsibility for planning and implementing classroom activities is shared among several teaching teams for multiple groups of children, a single portfolio may be used to document the evidence for each of the groups included in the shared planning and implementation. (Text added May 2007)**

## New Playgrounds in Time for Spring

The Pacific Rim Region celebrated the playground renovation at Ziggurat Child Development Center (ZCDC), in Laguna, CA. The new playground has a seagull walking pole and a maze for infants and toddlers; a bike path with a tunnel, cafe, general store and gas pumps for the preschool; a creek bed with flowing water; a gardening center to allow the children to grow plants and flowers; a large grass area for games and picnics; a climbing structure, basketball court and tether ball for the after school program. ZCDC is located in the Chet Holifield Federal Building and has a capacity of 112 children.

The Southeast Sunbelt Region renovated two playgrounds this spring. Treasure House Child Development Center in Covington, KY and Uncle Sam's Place in Louisville, KY celebrated the renovation of their playgrounds with Ribbon Cutting Ceremonies earlier this spring. The playgrounds, include large play structures, separate infant, toddler and preschool areas, shade structures, water and sand areas, music areas as well as several storage sheds. Each play area was designed to suit each site. Treasure House is located at the Cincinatti IRS Service Center in Covington, KY and has a capacity of 126 children.

Uncle Sam's Place which is located in the Romano L. Mazzoli Federal Building in Louisville, KY has a capacity of 156 children and includes a large after school and summer school age program.





## Customer's Corner

In the excitement of all the ribbon cutting ceremonies this spring, Eileen Stern, National Director Office of Child Care was able to meet many of our customers. Peggy Bogadi the Deputy Director, Submission Processing at the Cincinnati IRS Campus in Covington Kentucky helped dedicate the new playground at the Treasure House center. When asked about the impact the center had on her employees and the IRS Bogadi said that the center, and the fact that it is of high quality, has had a positive impact on her employees. "Parents have remarked on how well their children have been prepared to enter into the school systems and have one less thing to worry about." Because of its location being on IRS property and having operational hours of 6:15am to 5:30pm Monday through Friday, this provides employees the ability to stop in anytime to visit their child(ren) and work alternate tours of duty, including overtime Bogadi added.

Bogadi is such a supporter of the center that she joined the Board of Children Inc (the center provider) in 1994 serving as the liaison between the IRS and Children Inc. and served as a member of the Treasure House Advisory Committee.

When asked if the center is an accepted part of the agency culture she responded, "Absolutely". "The center has been in operation since 1989 and is part of the culture at the Cincinnati IRS Center. Just to give you one example of upper management support, Sue Hansen, the current Field Director of the Submission Processing Center in Covington has her own grand daughter enrolled at Treasure House."



**18th Annual  
GSA Child Care  
Conference**  
July 24- 26, 2007

### Still Time to Register

The 18th annual GSA Child Care Conference, July 24-26th, 2007 at the Omni Shoreham Hotel in Washington, DC.

This year's conference will feature tours of area child care centers. A daily registration fee has been set this year to facilitate participation for local attendees. The conference will begin at noon on Tuesday, July 24th with a luncheon and speaker. On Wednesday we have added a 5th track on NAEYC accreditation. Thursday morning will be the city wide tours.

Hotel reservations at the Omni Shoreham, 2500 Calvert Street, NW can be made by calling 1.800.843.6664, ask for the GSA Child Care Conference room block. The conference rate is \$162 plus tax, single/double occupancy (each additional adult is \$20). There is no extra charge for children 18 and under. **The hotel reservation cutoff date is June 18, 2007 at 5:00 PM EST.** The conference rate is available 3 days before and 3 days after the conference.

#### Conference Registration Fees

	Early Bird	After June 18, 2007
Teachers/Caregivers	\$175	\$200
Directors/Assistant Directors	\$235	\$260
All others	\$300	\$325

Conference registration and updates can be found at our website: [www.gsa.gov/childcare](http://www.gsa.gov/childcare)

Of the GSA centers eligible for NAEYC Accreditation, 89% are now accredited.

Accreditation Celebration in Lincoln

A special celebration was held for the Centennial Mall Child Development Center in honor of their NAEYC reaccreditation. The celebration attended by agency heads, State officials and building tenants, recognized the Centennial Mall Child Development Center and the Nebraska Field Office for having risen to the challenge of meeting and maintaining high accreditation standards.

The center located in the Robert Denney Federal Building and US Courthouse in Lincoln, Nebraska was first opened in 1989 and currently has 68 children enrolled.



A New Facility for Tundra Tykes

Following ground breaking in June of 2006, the Tundra Tykes center in Anchorage, Alaska opened its brand new doors and celebrated a ribbon cutting ceremony March 1, 2007. Because the construction season is so short in Alaska the center was built in record time. The new 9425 square feet center serves 80 children and is within walking distance of the Federal building. The center has been improved in every way, offering more space, more light, more views and a more home like environment.

For more information on the center and the ceremony look at "Child Care Center Spotlight" found in the Child Care Centers section of www.gsa.gov/childcare.



GSA Office of Child Care

WWW.GSA.GOV/  
CHILDCARE

National Director

Eileen Stern  
212-264-8321

Jacki Fling  
303-236-8000 x2264

Magda Marcano  
212-264-1268

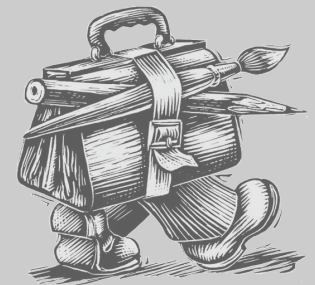
Nancy Norris  
404-331-1851

Jill Rhea  
215-446-4639

Ania Shapiro  
202-208-7656

Liz Themelis  
216-522-4963

newsletter  
Liz Themelis  
216-522-4963



Contributions and Comments on Center News are welcome and encouraged.

Want to receive this Newsletter electronically? Sign up at www.gsa.gov/childcare