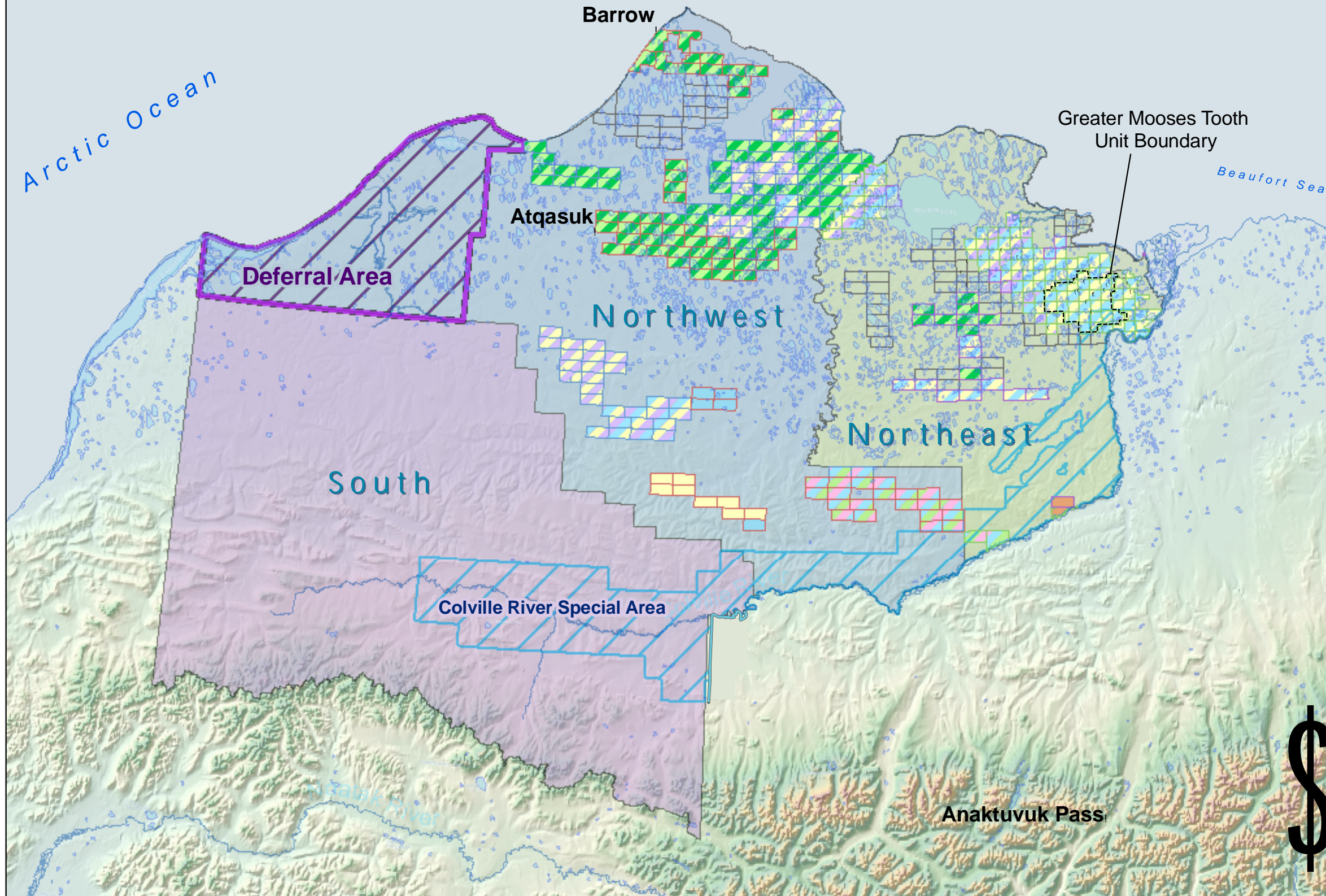
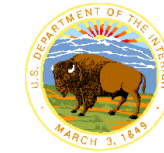


National Petroleum Reserve - Alaska



National Petroleum Reserve - Alaska

Leases, Lease Owners, Relinquished Lease Boundaries, the Greater Mooses Tooth Unit Boundary, and Exploration Well Locations



NPR-A
OIL & GAS LEASE SALES
1999, 2002, 2004 and 2006
DEPARTMENT OF THE INTERIOR
BUREAU OF LAND MANAGEMENT
ENERGY SECTION



Legend

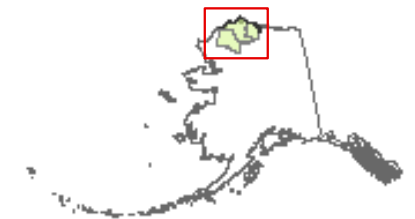
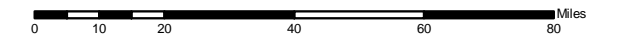
Leases

- 1999 Leases
- 2002 Leases
- 2004 Leases
- 2006 Leases
- Relinquished Leases
- Greater Mooses Tooth Unit Boundary

Operator

- Anadarko Petroleum Corporation (APC)
- BG Alaska E&P, Inc. (BGAK)
- ConocoPhillips Alaska, Inc. (CPAI)
- FEX LP
- Petro Canada (Alaska), Inc. (PCAI)
- Renaissance Umiat, LLC
- Pioneer Natural Resources Alaska, Inc. (PNRA)

Text within lease boundaries reflect leases numbers and dollar amount per acre.



The Bureau of Land Management makes no expressed or implied warranties with respect to the character, function, or capabilities of this product or its appropriateness for any user's purposes. In no event will the Bureau of Land Management be liable for any incidental, indirect, special, consequential or other damages suffered by the user or any other person or entity whether from use of the product, any failure thereof or otherwise, and in no event will the Bureau of Land Management liability to you or anyone else exceed the fee paid for the product.

Discrepancies in boundary lines are currently being researched.

Last Updated: September 2, 2008.