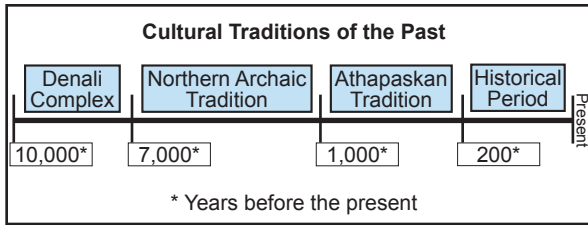




Secrets of lives lived long ago are hidden amidst the jagged up-thrusts of mountains and the sweeping grandeur of glaciers in south-central Alaska. Located along the Denali Highway between mileposts 17 and 37 is an area rich in historic and prehistoric remains called the Tangle Lakes Archaeological District (TLAD).

This area has more than 600 archaeological sites with artifacts from pit-houses to hand-fashioned stone tools. Carbon dating tests have helped identify four different cultural traditions displayed in the timeline below.



Trails in the area have been used by people since the Ice Age. Athapaskan hunters have traveled these paths seeking caribou for their large winter villages located along the Gulkana River. Miners in the region also used these trails to explore and access placer gold mining claims in both Valdez Creek and around the Tangle Lakes.

The Tangle Lakes Archaeological District was accepted to the National Register of Historic Places in 1971. This register recognizes historic properties that are significant in telling our nation's story. The Archaeological Resources Protection Act and other laws prohibit collecting or damaging artifacts or historic properties. Offenders can be *cited and fined*, their equipment *seized*, and be required by the Federal Court to *pay for damage assessment and all damage repairs*.



Not only is this a place to imagine and appreciate the past, it is also a wonderland for outdoor activities. The Tangle Lakes Archaeological District has many uses including:

- hiking
- camping
- berry picking
- snow machining
- hunting
- mining
- biking
- horseback riding
- photography
- fishing
- boating
- wildlife watching
- off-highway vehicle riding

To protect environmentally sensitive areas and our historic heritage, the Bureau of Land Management (BLM) and the State of Alaska Department of Natural Resources (DNR) have designated 8 trails open for off-highway vehicle (OHV) use within the Tangle Lakes Archaeological District. These trails are shown on the map on the back of this page.

Topographic maps are available at most BLM offices or at the State of Alaska DNR Public Information Office. **PLEASE** help us preserve this rich, varied and significant area for your future use and the enjoyment of others.



RIDING RESPONSIBLY

Stay on designated trails

No pioneering of new trails

Respect other trail users

Use improved trails when available

Cross streams at designated crossings only

Pack out your garbage

Plan ahead and be prepared

Know your limits

Do not collect or disturb artifacts

Additional information can be found at www.treadlightly.org

Now You Know...

Why the Tangle Lakes Archaeological District is special.

Where the TLAD is located.

What types of recreational activities can be enjoyed in this area.

When off-highway vehicles can be used only on designated trails.

For more information contact:

Bureau of Land Management
Glennallen Field Office
PO Box 147
Glennallen, AK 99588
Tel: 907-822-3217
www.glennallen.ak.blm.gov

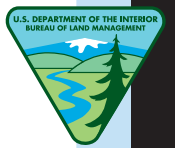
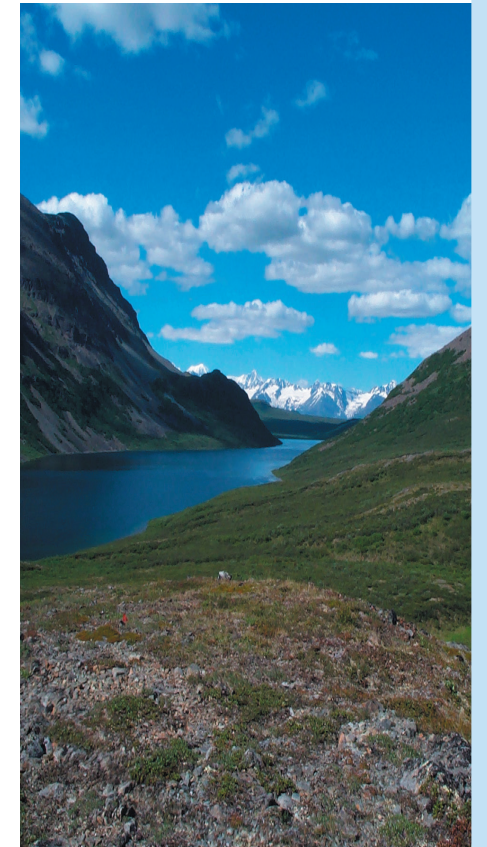
State of Alaska DNR
Southcentral Region Land Office
550 W. 7th Ave., Suite 900C
Anchorage, AK 99501-3577
Tel: 907-269-8552

Brochure Design by: Sarah Taylor
Photographs by: John Jangala
Map Design by: Tammy Larzelere

BLM/AK/GI-05/008+8100+050

Tangle Lakes Archaeological District

Information Guide and Trails Map



DNR
BLM

ALASKA

Trails 1-3 Managed by the State of Alaska, Department of Natural Resources:

Special Rules for trails 1-3:

- The use of motorized vehicles as provided by 11 AAC 96.020(a)(1)(D) and (E) is allowed on designated trails shown on the Tangle Lakes Archaeological District Special Use Area map.
- **Between May 18 and October 18**, a permit is required for the use of motorized vehicles off designated trails shown on the Tangle Lakes Archaeological District Special Use Area map.
- **Between October 19 and May 17**, a permit is required for the use of motorized vehicles off designated trails as shown on the Tangle Lakes Archaeological District Special Use Area map, except the use of motorized vehicles as provided in 11 AAC 96.020(a)(1)(D) and (E) is allowed where snow cover or ground frost is sufficient to prevent damage to archaeological values. Sufficient snow cover means an average of one foot of snow, with a minimum of six inches. Sufficient ground frost means a minimum of six inches.

Recommended uses for each trail are indicated by symbols. Match the numbers with the locations shown on the map.

1. Maclaren Summit Trail (MP 37) 

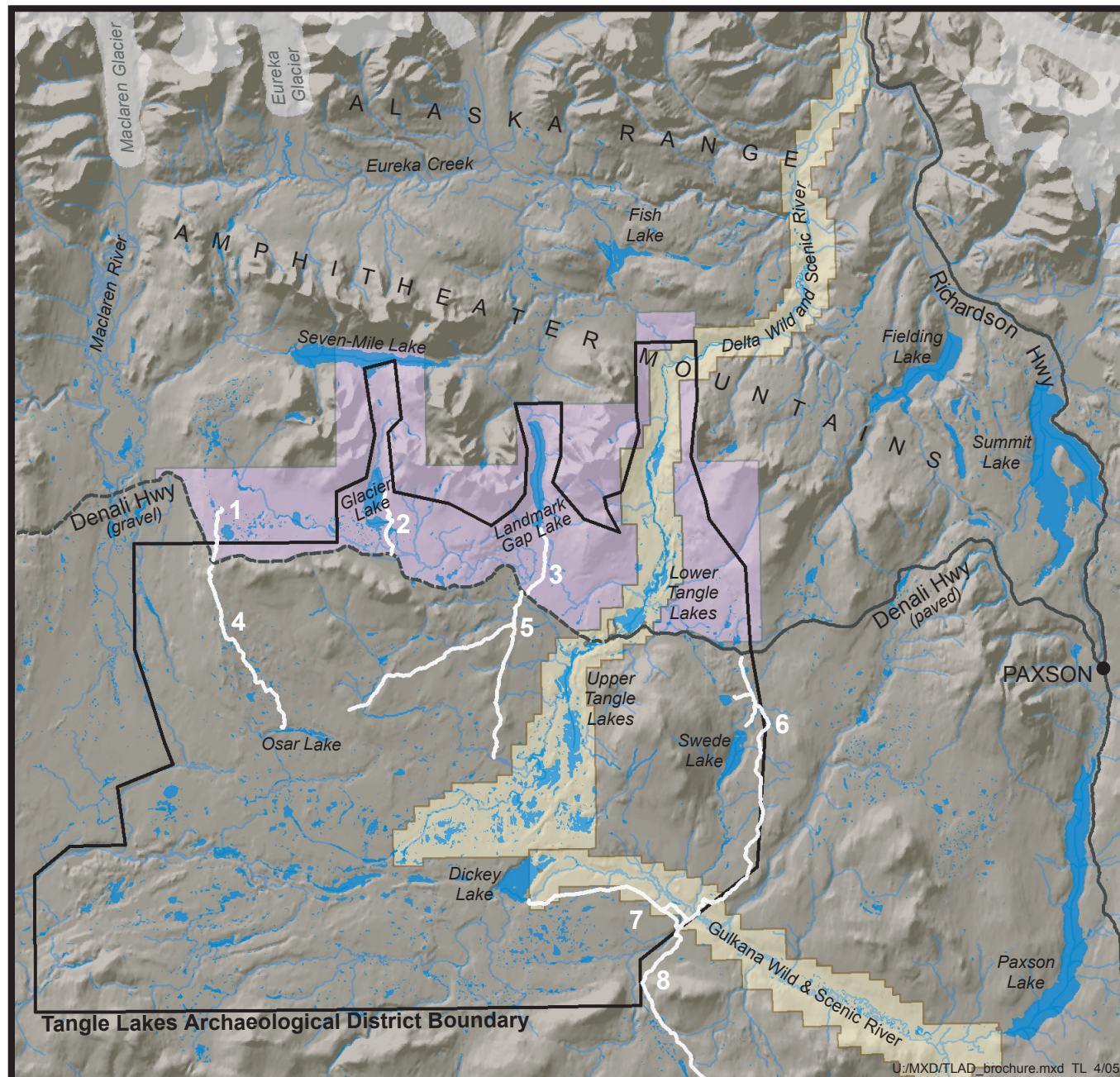
This 3 mile trail provides access across the tundra at Maclaren Summit, opening up fantastic views. Since it is within the Department of Fish and Game's Controlled Use Area, hunting with motorized vehicles is prohibited. Please do not take your OHV past the end of the trail as you are still in the TLAD Special Use Area.

2. Glacier Lake Trail (MP 30) 

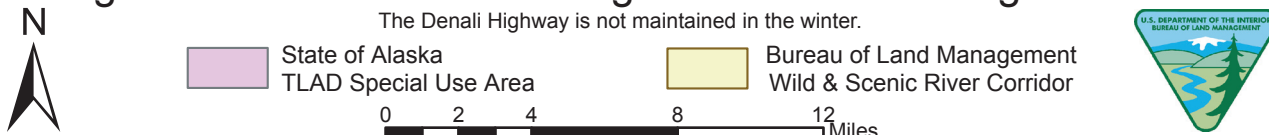
This trail extends approximately 2 miles to Glacier Gap Lake and is completely within the TLAD Special Use Area. The trail is wet and crosses a large boggy area and two small creeks. This trail is being considered for hardening and repair by the State of Alaska.

3. Landmark Gap Trail North (MP 24.6) 

This trail extends approximately 3 miles to the south end of Landmark Gap Lake. The trail is rocky and dry with one marshy spot. All users, please stay on the trail as there are several known archaeological sites nearby. A solid, rocky bottom facilitates crossing the marshy spot.



Designated Trails within the Tangle Lakes Archaeological District



Great care has been taken to ensure that the information represented is as accurate and complete as possible at the time of compilation. However, the information displayed on this map is intended to be used for graphic representation only. For official land status, refer to legal case-files and plats.

Trails 4-8 Managed by the Bureau of Land Management:

Special Rules for trails 4-8:

- Off Highway Vehicles (OHVs) are limited to these designated trails only within the Tangle Lakes Archaeological District (TLAD) from **May 16th to October 15th**.
- **Winter OHV use** is unrestricted when adequate snowfall is present.

Recommended uses are indicated by symbols for each trail. Match the numbers with the locations shown on the map.

4. Osar Lake Trail (MP 37) 

The trail leaves Maclaren Summit and travels south approximately 8 miles to the northwest shore of Osar Lake. It crosses glacial eskers and is fairly dry.

5. Landmark Gap Trail South (MP 24.7) 

This trail travels south and then branches to the southwest and southeast. The southwest branch extends approximately 8 miles to the vicinity of Osar Lake; the southeast branch extends approximately 5 miles to a viewpoint of the upper Tangle Lakes. There is a large muddy area at the beginning of the trail. Water crossings may be difficult after periods of heavy rains.

6. Swede Lake Trail (MP 16) 

The trail extends approximately 3 miles to the northern end of Swede Lake, continues approximately 7 miles to the Middle Fork Gulkana Branch Trail, and an additional 0.5 miles to the Alphabet Hills Trail. This trail is usually very wet and portions are outside the Tangle Lakes Archaeological District.

7. Dickey Lake Trail 

Accessed by the Swede Lake Trail, this trail parallels the Middle Fork of the Gulkana River. The trail can be extremely wet.

8. Alphabet Hills Trail 

An extension of the Swede Lake Trail, this trail provides a route into the Alphabet Hills.