

Table XIII-1

LEUKEMIA

TRENDS IN SEER INCIDENCE^a AND U.S. MORTALITY^b USING THE JOINTPOINT REGRESSION PROGRAM, 1975-2005
WITH UP TO THREE JOINTPOINTS BY RACE AND SEX

		<u>Joinpoint Trend 1</u>		<u>Joinpoint Trend 2</u>		<u>Joinpoint Trend 3</u>		<u>Joinpoint Trend 4</u>		<u>AAPC^c</u>	
		Years	APC	Years	APC	Years	APC	Years	APC	1996-2005	2001-2005
<u>SEER Cancer Incidence^a</u>											
All Races	Both Sexes	1975-2001	0.1	2001-2005	-1.8*					-0.8*	-1.8*
All Races	Male	1975-2001	0.0	2001-2005	-2.2*					-1.0*	-2.2*
All Races	Female	1975-2005	0.0							0.0	0.0
White	Both Sexes	1975-2001	0.2*	2001-2005	-2.0*					-0.8*	-2.0*
White	Male	1975-2002	0.0	2002-2005	-3.0					-1.0	-2.3
White	Female	1975-2005	0.1							0.1	0.1
Black	Both Sexes	1975-2005	-0.5*							-0.5*	-0.5*
Black	Male	1975-2005	-0.6*							-0.6*	-0.6*
Black	Female	1975-2005	-0.3							-0.3	-0.3
<u>SEER Delay-Adjusted Incidence^a</u>											
All Races	Both Sexes	1975-2005	0.2*							0.2*	0.2*
All Races	Male	1975-2005	0.1							0.1	0.1
All Races	Female	1975-2005	0.2*							0.2*	0.2*
White	Both Sexes	1975-2005	0.4*							0.4*	0.4*
White	Male	1975-2005	0.2*							0.2*	0.2*
White	Female	1975-2005	0.4*							0.4*	0.4*
Black	Both Sexes	1975-2005	-0.1							-0.1	-0.1
Black	Male	1975-2005	-0.2							-0.2	-0.2
Black	Female	1975-2005	0.1							0.1	0.1
<u>U.S. Cancer Mortality^b</u>											
All Races	Both Sexes	1975-2000	-0.3*	2000-2005	-1.5*					-0.9*	-1.5*
All Races	Male	1975-1995	-0.2*	1995-2005	-0.8*					-0.8*	-0.8*
All Races	Female	1975-1980	0.8	1980-2001	-0.4*	2001-2005	-2.2*			-1.2*	-2.2*
White	Both Sexes	1975-2001	-0.3*	2001-2005	-1.5*					-0.8*	-1.5*
White	Male	1975-1996	-0.2*	1996-2005	-0.7*					-0.7*	-0.7*
White	Female	1975-1980	0.6	1980-2001	-0.4*	2001-2005	-2.0*			-1.1*	-2.0*
Black	Both Sexes	1975-1991	0.7*	1991-2005	-1.1*					-1.1*	-1.1*
Black	Male	1975-1991	1.0*	1991-2005	-1.3*					-1.3*	-1.3*
Black	Female	1975-1991	0.5	1991-2005	-0.9*					-0.9*	-0.9*

Joinpoint Regression Program Version 3.3.1, April 2008, National Cancer Institute. (<http://srab.cancer.gov/joinpoint/>).

The APC is the Annual Percent Change based on rates age-adjusted to the 2000 US Std Population (19 age groups - Census P25-1130). Trends are from the SEER 9 areas (San Francisco, Connecticut, Detroit, Hawaii, Iowa, New Mexico, Seattle, Utah, and Atlanta).

Trends are from US Mortality Files, National Center for Health Statistics, Centers for Disease Control and Prevention.

The AAPC is the Average Annual Percent Change and is based on the APCs calculated by Joinpoint over the time range of 1975-2005.

The APC/AAPC is significantly different from zero ($p < .05$).

a
b
c
*

Table XIII-1a

LEUKEMIA

TRENDS IN SEER INCIDENCE^a AND U.S. MORTALITY^b USING THE JOINTPOINT REGRESSION PROGRAM, 1975-2005
WITH UP TO FOUR JOINTPOINTS BY RACE AND SEX

		<u>Jointpoint Trend 1</u>		<u>Jointpoint Trend 2</u>		<u>Jointpoint Trend 3</u>		<u>Jointpoint Trend 4</u>		<u>Jointpoint Trend 5</u>		<u>AAPC^c</u>
		Years	APC	Years	APC	Years	APC	Years	APC	Years	APC	2001-2005
<u>SEER Cancer Incidence^a</u>												
All Races	Both Sexes	1975-2001	0.1	2001-2005	-1.8*							-1.8*
All Races	Male	1975-2001	0.0	2001-2005	-2.2*							-2.2*
All Races	Female	1975-2005	0.0									0.0
White	Both Sexes	1975-2001	0.2*	2001-2005	-2.0*							-2.0*
White	Male	1975-2002	0.0	2002-2005	-3.0							-2.3
White	Female	1975-2005	0.1									0.1
Black	Both Sexes	1975-2005	-0.5*									-0.5*
Black	Male	1975-2005	-0.6*									-0.6*
Black	Female	1975-2005	-0.3									-0.3
<u>SEER Delay-Adjusted Incidence^a</u>												
All Races	Both Sexes	1975-2005	0.2*									0.2*
All Races	Male	1975-2005	0.1									0.1
All Races	Female	1975-2005	0.2*									0.2*
White	Both Sexes	1975-2005	0.4*									0.4*
White	Male	1975-2005	0.2*									0.2*
White	Female	1975-2005	0.4*									0.4*
Black	Both Sexes	1975-2005	-0.1									-0.1
Black	Male	1975-2005	-0.2									-0.2
Black	Female	1975-2005	0.1									0.1
<u>U.S. Cancer Mortality^b</u>												
All Races	Both Sexes	1975-1980	0.6	1980-1988	-0.6*	1988-1991	0.7	1991-2001	-0.5*	2001-2005	-1.4*	-1.4*
All Races	Male	1975-1995	-0.2*	1995-2005	-0.8*							-0.8*
All Races	Female	1975-1980	0.8	1980-2001	-0.4*	2001-2005	-2.2*					-2.2*
White	Both Sexes	1975-1980	0.5	1980-1988	-0.7*	1988-1991	0.7	1991-2001	-0.4*	2001-2005	-1.3*	-1.3*
White	Male	1975-1996	-0.2*	1996-2005	-0.7*							-0.7*
White	Female	1975-2000	-0.3*	2000-2005	-1.8*							-1.8*
Black	Both Sexes	1975-1991	0.7*	1991-2005	-1.1*							-1.1*
Black	Male	1975-1991	1.0*	1991-2005	-1.3*							-1.3*
Black	Female	1975-1991	0.5	1991-2005	-0.9*							-0.9*

Jointpoint Regression Program Version 3.3.1, April 2008, National Cancer Institute. (<http://srab.cancer.gov/jointpoint/>).

The APC is the Annual Percent Change based on rates age-adjusted to the 2000 US Std Population (19 age groups - Census P25-1130).

Trends are from the SEER 9 areas (San Francisco, Connecticut, Detroit, Hawaii, Iowa, New Mexico, Seattle, Utah, and Atlanta).

Trends are from US Mortality Files, National Center for Health Statistics, Centers for Disease Control and Prevention.

The AAPC is the Average Annual Percent Change and is based on the APCs calculated by Jointpoint over the time range of 1975-2005.

The APC/AAPC is significantly different from zero ($p < .05$).

a
b
c
*

Table XIII-2

LEUKEMIAAGE ADJUSTED SEER INCIDENCE^a RATES BY YEAR, RACE AND SEX

	<u>All Races</u>			<u>Whites</u>			<u>Blacks</u>		
	<u>Total</u>	<u>Males</u>	<u>Females</u>	<u>Total</u>	<u>Males</u>	<u>Females</u>	<u>Total</u>	<u>Males</u>	<u>Females</u>
<u>AGE-ADJUSTED RATES</u>									
<u>YEAR OF DIAGNOSIS:</u>									
1975	12.8	16.9	9.9	13.1	17.5	10.1	11.5	16.2	8.5
1976	13.5	18.5	10.2	13.8	19.1	10.3	11.3	14.2	9.4
1977	12.7	16.3	10.2	13.2	17.0	10.5	10.2	13.6	7.7
1978	12.9	17.2	9.8	13.5	18.3	10.2	9.2	11.4	7.5
1979	12.6	16.8	9.7	13.0	17.5	10.0	10.6	13.6	8.6
1980	12.9	17.3	9.9	13.3	17.9	10.1	12.2	16.0	9.5
1981	12.4	16.5	9.6	12.7	17.1	9.8	12.2	14.5	10.3
1982	13.2	18.3	9.7	13.5	18.8	10.0	10.7	15.2	7.9
1983	13.2	17.8	9.9	13.5	18.4	10.1	12.5	16.0	10.1
1984	13.0	17.1	10.1	13.4	17.9	10.3	10.7	11.9	9.6
1985	13.3	17.7	10.4	13.7	18.2	10.7	12.2	16.8	9.3
1986	12.8	17.5	9.5	13.4	18.4	9.9	10.2	13.2	8.1
1987	13.3	17.7	10.3	13.8	18.4	10.6	12.6	17.6	9.3
1988	12.9	17.5	9.7	13.4	18.2	10.0	11.6	14.0	9.4
1989	13.4	17.6	10.4	13.9	18.3	10.9	11.3	15.9	8.0
1990	12.8	17.2	9.7	13.4	18.2	10.1	11.3	14.8	8.8
1991	13.0	16.8	10.2	13.6	17.7	10.5	10.9	12.0	10.2
1992	13.0	17.4	9.8	13.6	18.6	9.9	10.7	13.9	8.4
1993	13.0	16.9	10.0	13.5	17.9	10.3	11.6	15.1	9.1
1994	12.9	16.8	10.1	13.6	17.7	10.5	9.8	12.6	7.8
1995	13.4	17.6	10.3	14.3	18.7	11.0	9.8	13.4	7.4
1996	13.0	16.8	10.3	13.5	17.5	10.7	10.8	13.9	8.8
1997	13.0	17.4	9.8	13.8	18.5	10.4	10.3	13.8	8.1
1998	13.0	16.9	10.1	13.8	17.8	10.8	9.7	14.1	7.0
1999	12.6	16.8	9.4	13.2	17.6	9.9	10.1	13.6	7.8
2000	13.1	17.0	10.2	13.8	17.9	10.7	11.3	13.1	9.9
2001	13.6	17.8	10.5	14.5	18.7	11.2	11.3	13.8	9.5
2002	12.8	16.8	9.7	13.7	18.1	10.4	8.2	10.6	6.5
2003	12.6	16.5	9.6	13.2	17.4	10.0	10.3	13.1	8.2
2004	12.7	16.3	9.9	13.3	17.0	10.4	11.0	14.6	8.7
2005	12.1	15.6	9.3	12.7	16.6	9.7	9.7	11.0	8.8
1975-2005	12.9	17.0	9.9	13.5	17.9	10.3	10.7	13.8	8.6

^a SEER 9 areas (San Francisco, Connecticut, Detroit, Hawaii, Iowa, New Mexico, Seattle, Utah, and Atlanta). Rates are per 100,000 and are age-adjusted to the 2000 US Std Population (19 age groups - Census P25-1130).

- Statistic not shown. Rate based on less than 16 cases for the time interval.

Table XIII-3
ACUTE LYMPHOCYTIC LEUKEMIA

AGE ADJUSTED SEER INCIDENCE^a RATES BY YEAR, RACE AND SEX

	<u>All Races</u>			<u>Whites</u>			<u>Blacks</u>		
	<u>Total</u>	<u>Males</u>	<u>Females</u>	<u>Total</u>	<u>Males</u>	<u>Females</u>	<u>Total</u>	<u>Males</u>	<u>Females</u>
<u>AGE-ADJUSTED RATES</u>									
<u>YEAR OF DIAGNOSIS:</u>									
1975	0.9	1.1	0.8	1.0	1.2	0.8	-	-	-
1976	1.1	1.3	0.9	1.1	1.3	0.9	0.8	-	-
1977	1.1	1.3	0.9	1.2	1.4	1.0	-	-	-
1978	1.0	1.2	0.8	1.1	1.3	0.9	-	-	-
1979	1.0	1.2	0.9	1.1	1.2	1.0	-	-	-
1980	1.1	1.4	0.9	1.2	1.5	0.9	0.7	-	-
1981	1.2	1.3	1.2	1.3	1.4	1.2	1.0	-	-
1982	1.2	1.5	1.0	1.3	1.6	1.0	-	-	-
1983	1.3	1.5	1.1	1.4	1.7	1.2	0.8	-	-
1984	1.3	1.5	1.2	1.3	1.5	1.2	0.9	-	-
1985	1.3	1.5	1.1	1.4	1.6	1.1	-	-	-
1986	1.3	1.7	1.0	1.4	1.8	1.0	0.8	-	-
1987	1.3	1.5	1.2	1.4	1.5	1.2	0.9	-	1.1
1988	1.4	1.8	1.1	1.4	1.8	1.1	1.0	-	-
1989	1.6	1.8	1.4	1.7	1.9	1.5	1.0	-	-
1990	1.4	1.7	1.2	1.5	1.8	1.3	0.6	-	-
1991	1.4	1.7	1.1	1.5	1.9	1.1	0.9	-	-
1992	1.4	1.6	1.1	1.4	1.7	1.1	0.9	-	-
1993	1.3	1.4	1.1	1.4	1.6	1.1	0.8	-	-
1994	1.2	1.5	0.9	1.3	1.6	1.0	0.7	-	-
1995	1.5	1.8	1.2	1.6	1.9	1.3	1.0	1.3	-
1996	1.4	1.6	1.2	1.5	1.7	1.2	0.8	-	-
1997	1.3	1.5	1.2	1.5	1.6	1.3	0.8	0.9	-
1998	1.5	1.6	1.3	1.6	1.7	1.4	0.9	1.2	-
1999	1.3	1.5	1.1	1.4	1.6	1.2	0.7	-	-
2000	1.4	1.5	1.3	1.5	1.6	1.5	0.8	-	-
2001	1.4	1.6	1.3	1.6	1.8	1.4	0.6	-	-
2002	1.5	1.8	1.2	1.6	2.0	1.3	0.6	-	-
2003	1.4	1.6	1.2	1.4	1.7	1.3	0.7	-	-
2004	1.5	1.7	1.4	1.6	1.9	1.3	1.1	-	1.3
2005	1.5	1.8	1.2	1.6	1.9	1.3	0.9	1.0	-
1975-2005	1.3	1.5	1.1	1.4	1.6	1.2	0.8	0.8	0.7

^a SEER 9 areas (San Francisco, Connecticut, Detroit, Hawaii, Iowa, New Mexico, Seattle, Utah, and Atlanta). Rates are per 100,000 and are age-adjusted to the 2000 US Std Population (19 age groups - Census P25-1130).
 - Statistic not shown. Rate based on less than 16 cases for the time interval.

Table XIII-4
 CHRONIC LYMPHOCYTIC LEUKEMIA

AGE ADJUSTED SEER INCIDENCE^a RATES BY YEAR, RACE AND SEX

	All Races			Whites			Blacks		
	Total	Males	Females	Total	Males	Females	Total	Males	Females
<u>AGE-ADJUSTED RATES</u>									
YEAR OF DIAGNOSIS:									
1975	4.3	5.9	3.3	4.5	6.1	3.4	4.8	6.9	3.2
1976	4.6	6.8	3.1	4.8	7.2	3.2	4.3	6.6	3.0
1977	4.2	5.7	3.1	4.4	6.0	3.3	3.8	5.8	2.5
1978	4.5	5.9	3.4	4.7	6.4	3.6	3.3	3.6	3.1
1979	4.0	5.7	2.9	4.3	6.1	3.1	3.1	4.2	-
1980	4.5	6.3	3.3	4.7	6.5	3.5	4.5	7.1	2.9
1981	4.3	6.3	2.9	4.5	6.6	3.0	3.8	5.4	2.4
1982	4.3	6.2	3.0	4.5	6.4	3.2	3.8	6.7	-
1983	4.5	6.4	3.1	4.7	6.8	3.3	4.2	6.1	3.0
1984	4.4	6.3	3.1	4.7	6.8	3.3	3.5	4.5	2.7
1985	4.4	6.1	3.3	4.7	6.5	3.5	4.1	6.1	2.9
1986	4.5	6.3	3.2	4.8	6.8	3.5	2.8	4.2	-
1987	4.6	6.8	3.1	4.9	7.2	3.3	4.0	6.1	2.5
1988	4.5	6.4	3.1	4.7	6.8	3.2	4.4	5.3	3.5
1989	4.6	6.4	3.4	4.9	6.8	3.6	3.9	5.3	2.9
1990	4.5	6.2	3.3	4.8	6.7	3.5	4.5	6.1	3.4
1991	4.5	6.1	3.4	4.9	6.7	3.6	3.4	3.6	3.2
1992	4.5	6.6	3.1	5.0	7.3	3.4	3.2	5.0	2.1
1993	4.4	6.0	3.1	4.6	6.4	3.3	4.4	6.6	2.9
1994	4.4	6.0	3.3	4.8	6.5	3.6	3.2	4.1	2.3
1995	4.4	6.3	3.0	4.8	6.8	3.3	3.3	5.2	2.1
1996	4.5	6.1	3.4	4.9	6.6	3.7	3.6	5.4	2.3
1997	4.3	5.9	3.1	4.7	6.4	3.4	3.3	4.9	2.4
1998	4.0	5.7	2.8	4.4	6.2	3.1	2.7	3.4	2.2
1999	3.9	5.8	2.6	4.2	6.2	2.8	3.5	5.5	2.3
2000	4.1	5.8	2.8	4.6	6.5	3.1	2.9	3.6	2.5
2001	4.7	6.6	3.2	5.1	7.1	3.5	3.5	4.5	2.8
2002	4.4	6.2	3.0	4.9	6.9	3.3	2.5	3.4	1.8
2003	4.5	6.3	3.2	4.9	6.9	3.4	3.5	4.8	2.5
2004	4.5	6.1	3.2	4.8	6.5	3.6	3.3	5.4	1.8
2005	4.1	5.9	2.8	4.5	6.5	2.9	2.9	3.4	2.5
1975-2005	4.4	6.1	3.1	4.7	6.6	3.3	3.5	4.9	2.5

^a SEER 9 areas (San Francisco, Connecticut, Detroit, Hawaii, Iowa, New Mexico, Seattle, Utah, and Atlanta). Rates are per 100,000 and are age-adjusted to the 2000 US Std Population (19 age groups - Census P25-1130).

- Statistic not shown. Rate based on less than 16 cases for the time interval.

Table XIII-5
ACUTE MYELOID LEUKEMIA

AGE ADJUSTED SEER INCIDENCE^a RATES BY YEAR, RACE AND SEX

	All Races			Whites			Blacks		
	Total	Males	Females	Total	Males	Females	Total	Males	Females
<u>AGE-ADJUSTED RATES</u>									
YEAR OF DIAGNOSIS:									
1975	3.4	4.2	3.0	3.5	4.3	3.0	2.5	3.4	2.0
1976	3.5	4.4	2.9	3.5	4.5	2.9	2.6	-	2.6
1977	3.5	4.2	3.1	3.6	4.4	3.1	1.9	-	-
1978	3.4	4.4	2.7	3.5	4.6	2.8	2.7	3.5	2.1
1979	3.3	4.1	2.8	3.4	4.2	2.9	3.4	3.5	3.4
1980	3.1	4.1	2.4	3.2	4.1	2.5	2.9	3.3	2.5
1981	3.2	4.0	2.6	3.2	4.1	2.7	3.1	3.2	2.9
1982	3.4	4.8	2.6	3.5	4.9	2.6	2.5	3.2	2.1
1983	3.2	4.2	2.5	3.2	4.3	2.4	2.9	3.0	2.9
1984	3.3	4.1	2.7	3.4	4.2	2.8	2.4	2.1	2.4
1985	3.3	4.1	2.9	3.3	4.0	2.8	3.7	4.9	3.0
1986	3.0	3.9	2.4	2.9	3.9	2.4	3.2	4.0	2.7
1987	3.0	4.0	2.5	3.0	4.0	2.5	3.0	4.7	2.0
1988	3.0	3.8	2.5	3.1	3.9	2.6	2.8	3.1	2.5
1989	3.2	4.0	2.6	3.3	4.0	2.8	2.2	3.8	-
1990	3.0	3.9	2.4	3.1	4.0	2.5	2.5	3.0	2.1
1991	3.3	3.9	2.9	3.4	3.9	3.0	3.3	4.4	2.6
1992	3.2	3.9	2.8	3.3	4.0	2.7	3.0	3.0	3.0
1993	3.5	4.3	2.9	3.5	4.5	2.9	2.5	2.6	2.5
1994	3.5	4.1	3.0	3.5	4.2	3.0	2.9	3.2	2.7
1995	3.7	4.2	3.3	3.8	4.3	3.4	2.6	2.6	2.7
1996	3.5	4.3	2.9	3.5	4.3	2.9	3.2	4.1	2.7
1997	3.5	4.6	2.8	3.6	4.8	2.9	3.0	3.8	2.6
1998	3.9	4.9	3.2	4.1	5.0	3.3	3.1	4.6	2.1
1999	3.7	4.5	3.2	3.8	4.6	3.3	3.0	3.4	2.8
2000	4.0	4.9	3.4	4.0	4.9	3.4	4.4	4.9	4.0
2001	4.0	4.9	3.4	4.2	5.0	3.6	3.4	4.1	3.0
2002	3.6	4.5	3.0	3.8	4.7	3.1	2.9	3.2	2.7
2003	3.6	4.5	2.9	3.6	4.6	3.0	3.3	3.4	2.9
2004	3.4	4.0	2.9	3.4	4.1	3.0	3.2	4.0	2.9
2005	3.4	4.0	3.1	3.5	4.1	3.1	3.4	3.4	3.4
1975-2005	3.4	4.3	2.9	3.5	4.3	2.9	3.0	3.6	2.6

^a SEER 9 areas (San Francisco, Connecticut, Detroit, Hawaii, Iowa, New Mexico, Seattle, Utah, and Atlanta). Rates are per 100,000 and are age-adjusted to the 2000 US Std Population (19 age groups - Census P25-1130).
- Statistic not shown. Rate based on less than 16 cases for the time interval.

Table XIII-6
CHRONIC MYELOID LEUKEMIA

AGE ADJUSTED SEER INCIDENCE^a RATES BY YEAR, RACE AND SEX

	<u>All Races</u>			<u>Whites</u>			<u>Blacks</u>		
	<u>Total</u>	<u>Males</u>	<u>Females</u>	<u>Total</u>	<u>Males</u>	<u>Females</u>	<u>Total</u>	<u>Males</u>	<u>Females</u>
<u>AGE-ADJUSTED RATES</u>									
<u>YEAR OF DIAGNOSIS:</u>									
1975	2.0	2.9	1.3	2.0	3.0	1.3	1.9	-	-
1976	1.9	2.5	1.6	1.9	2.4	1.5	1.9	2.6	-
1977	1.7	2.1	1.4	1.7	2.1	1.4	1.8	-	-
1978	1.7	2.3	1.3	1.7	2.3	1.4	1.4	-	-
1979	1.9	2.5	1.4	1.9	2.5	1.5	1.9	2.8	-
1980	1.7	2.1	1.5	1.7	2.1	1.5	1.5	-	-
1981	1.6	2.0	1.4	1.6	1.9	1.4	2.4	3.0	1.8
1982	1.7	2.2	1.4	1.7	2.2	1.3	1.7	-	1.8
1983	1.7	2.2	1.3	1.6	2.1	1.3	2.5	3.4	1.8
1984	1.7	2.4	1.2	1.6	2.4	1.1	2.6	2.6	2.6
1985	2.0	2.8	1.4	2.0	2.8	1.5	2.1	2.9	-
1986	1.7	2.2	1.3	1.7	2.3	1.3	1.5	-	-
1987	1.9	2.3	1.6	1.9	2.4	1.6	2.1	2.9	-
1988	1.9	2.5	1.5	1.9	2.6	1.5	2.1	2.9	-
1989	1.7	2.2	1.3	1.7	2.2	1.3	2.2	3.1	-
1990	1.8	2.5	1.2	1.7	2.5	1.2	2.6	3.5	2.0
1991	1.9	2.4	1.5	1.9	2.6	1.4	1.6	-	1.9
1992	1.8	2.2	1.5	1.8	2.2	1.5	1.5	1.7	-
1993	1.9	2.5	1.5	2.0	2.5	1.6	2.3	3.6	-
1994	1.9	2.5	1.4	1.9	2.5	1.5	1.7	2.5	-
1995	1.9	2.5	1.4	2.0	2.7	1.4	1.5	2.0	-
1996	1.8	2.4	1.4	1.8	2.5	1.3	2.0	2.4	1.8
1997	1.9	2.7	1.3	1.9	2.7	1.3	1.7	2.5	-
1998	1.6	1.9	1.4	1.7	1.9	1.5	1.5	2.3	-
1999	1.8	2.4	1.3	1.8	2.4	1.3	1.7	2.2	1.3
2000	1.8	2.3	1.3	1.8	2.3	1.4	1.6	1.7	1.3
2001	1.7	2.2	1.3	1.8	2.3	1.4	1.8	2.6	1.3
2002	1.5	2.0	1.2	1.6	2.0	1.3	1.0	-	-
2003	1.5	2.0	1.1	1.6	2.1	1.1	1.3	1.9	-
2004	1.7	2.4	1.2	1.8	2.4	1.2	1.4	1.9	1.0
2005	1.5	2.0	1.1	1.5	2.0	1.2	1.4	2.2	-
1975-2005	1.7	2.3	1.3	1.8	2.3	1.4	1.8	2.3	1.4

^a SEER 9 areas (San Francisco, Connecticut, Detroit, Hawaii, Iowa, New Mexico, Seattle, Utah, and Atlanta). Rates are per 100,000 and are age-adjusted to the 2000 US Std Population (19 age groups - Census P25-1130).

- Statistic not shown. Rate based on less than 16 cases for the time interval.

Table XIII-7

LEUKEMIAAGE-ADJUSTED U.S. DEATH^a RATES BY YEAR, RACE AND SEX

	<u>All Races</u>			<u>Whites</u>			<u>Blacks</u>		
	<u>Total</u>	<u>Males</u>	<u>Females</u>	<u>Total</u>	<u>Males</u>	<u>Females</u>	<u>Total</u>	<u>Males</u>	<u>Females</u>
<u>AGE-ADJUSTED RATES</u>									
<u>YEAR OF DEATH:</u>									
1975	8.1	11.0	6.2	8.3	11.3	6.3	6.6	8.6	5.1
1976	8.1	10.9	6.2	8.3	11.2	6.3	6.8	8.5	5.5
1977	8.1	10.8	6.3	8.3	11.1	6.3	6.8	8.8	5.5
1978	8.0	10.8	6.1	8.2	11.1	6.3	6.7	9.2	4.9
1979	8.3	11.1	6.4	8.4	11.4	6.5	7.0	8.9	5.7
1980	8.4	11.2	6.5	8.5	11.5	6.6	7.0	9.1	5.7
1981	8.1	10.9	6.2	8.2	11.2	6.3	7.1	8.9	5.9
1982	8.2	11.0	6.3	8.3	11.3	6.4	7.1	9.4	5.7
1983	8.1	10.9	6.3	8.2	11.2	6.3	7.2	9.2	5.9
1984	8.1	10.7	6.4	8.2	10.9	6.5	7.1	9.2	5.7
1985	8.1	10.8	6.3	8.2	11.0	6.4	7.1	9.6	5.4
1986	8.0	10.7	6.2	8.1	11.0	6.2	7.3	9.3	5.9
1987	7.8	10.3	6.1	7.9	10.5	6.2	7.2	9.4	5.9
1988	7.8	10.6	6.0	8.0	10.8	6.1	7.2	9.8	5.6
1989	8.0	10.6	6.2	8.1	10.8	6.3	7.4	10.3	5.5
1990	8.0	10.7	6.2	8.1	10.9	6.3	7.4	10.0	5.8
1991	8.0	10.5	6.3	8.1	10.6	6.4	7.4	10.0	5.8
1992	8.0	10.7	6.1	8.1	10.9	6.2	7.2	9.4	5.7
1993	7.9	10.7	6.1	8.0	10.8	6.2	7.4	9.8	5.8
1994	7.9	10.6	6.0	8.0	10.8	6.1	7.1	9.6	5.5
1995	7.9	10.8	6.0	8.0	11.0	6.0	7.2	9.8	5.5
1996	7.8	10.5	6.1	8.0	10.7	6.1	7.5	10.1	5.9
1997	7.7	10.4	5.9	7.9	10.7	6.0	6.8	9.2	5.3
1998	7.6	10.1	5.8	7.7	10.3	5.9	7.0	9.4	5.6
1999	7.7	10.2	6.0	7.9	10.5	6.1	6.7	8.8	5.4
2000	7.7	10.3	5.9	7.9	10.5	6.0	6.7	9.1	5.3
2001	7.6	10.1	5.9	7.8	10.4	6.0	6.7	8.8	5.4
2002	7.5	10.1	5.7	7.7	10.4	5.8	6.7	8.8	5.4
2003	7.4	9.9	5.6	7.6	10.3	5.7	6.5	8.4	5.3
2004	7.2	9.7	5.5	7.4	9.9	5.6	6.7	8.8	5.3
2005	7.2	9.7	5.4	7.4	10.0	5.6	6.0	8.0	4.7
1975-2005	7.8	10.5	6.0	8.0	10.8	6.1	7.0	9.2	5.5

^a US Mortality Files, National Center for Health Statistics, Centers for Disease Control and Prevention. Rates are per 100,000 and are age-adjusted to the 2000 US Std Population (19 age groups - Census P25-1130).

- Statistic not shown. Rate based on less than 16 cases for the time interval.

Table XIII-8
LEUKEMIASEER INCIDENCE^a AND U.S. DEATH^b RATES, AGE-ADJUSTED AND AGE-SPECIFIC RATES, BY RACE AND SEX

	All Races			Whites			Blacks		
	Total	Males	Females	Total	Males	Females	Total	Males	Females
<u>SEER INCIDENCE</u>									
<u>AGE AT DIAGNOSIS</u>									
AGE-ADJUSTED RATES, 2001-2005									
All ages	12.3	16.0	9.5	12.9	16.7	9.9	10.1	13.0	8.0
Under 65	6.1	7.3	4.9	6.3	7.6	5.1	5.1	6.3	4.0
65 and over	55.5	76.3	41.3	58.1	80.2	43.0	44.6	59.1	35.4
All ages(IARC world std) ^c	8.9	11.2	7.0	9.3	11.7	7.3	7.2	9.1	5.7
AGE-SPECIFIC RATES, 2001-2005									
<1	4.7	4.8	4.6	4.9	5.0	4.8	4.0	-	-
1-4	9.0	10.1	7.8	9.6	10.8	8.4	4.7	5.6	3.6
5-9	3.9	4.2	3.7	4.2	4.6	3.9	2.1	1.9	2.3
10-14	3.0	3.3	2.6	3.2	3.5	2.8	2.2	2.6	1.9
15-19	3.0	3.8	2.1	3.2	4.3	2.2	1.9	2.0	1.8
20-24	2.4	2.9	1.8	2.5	3.0	1.9	2.0	2.6	1.5
25-29	2.4	2.7	2.0	2.4	2.8	2.1	2.2	2.9	1.6
30-34	3.0	3.3	2.6	3.0	3.4	2.6	3.0	3.4	2.6
35-39	3.6	4.2	2.9	3.6	4.2	3.0	3.2	4.1	2.4
40-44	4.9	5.5	4.2	4.8	5.5	4.1	4.6	5.6	3.7
45-49	6.9	8.2	5.6	7.0	8.3	5.7	6.5	7.9	5.2
50-54	10.2	12.4	8.1	10.5	12.6	8.4	9.0	11.3	7.1
55-59	15.8	19.9	11.8	16.3	20.7	12.2	13.8	17.8	10.5
60-64	23.8	30.8	17.4	24.7	31.8	18.2	22.0	29.9	15.7
65-69	35.2	46.0	25.9	37.2	48.4	27.4	28.8	37.8	22.0
70-74	47.7	64.8	34.0	49.8	68.0	34.9	41.7	54.5	32.8
75-79	62.9	86.6	46.0	65.6	89.9	48.2	50.2	71.3	37.1
80-84	74.4	104.7	55.5	78.1	110.1	58.1	55.9	77.0	44.4
85+	81.6	116.2	65.6	85.2	124.3	67.5	62.2	74.1	57.4
<u>U.S. MORTALITY</u>									
<u>AGE AT DEATH</u>									
AGE-ADJUSTED RATES, 2001-2005									
All ages	7.4	9.9	5.6	7.6	10.2	5.7	6.5	8.5	5.2
Under 65	2.3	2.8	1.9	2.4	2.8	1.9	2.5	3.0	2.1
65 and over	42.2	59.1	31.1	43.7	61.2	32.0	34.3	46.6	27.0
All ages(IARC world std) ^c	4.4	5.7	3.4	4.5	5.9	3.4	4.1	5.3	3.3
AGE-SPECIFIC RATES, 2001-2005									
<1	0.6	0.5	0.7	0.6	0.5	0.8	0.5	-	-
1-4	0.8	0.9	0.7	0.8	0.9	0.7	0.7	0.8	0.5
5-9	0.7	0.8	0.7	0.8	0.9	0.7	0.6	0.7	0.5
10-14	0.8	0.9	0.7	0.8	0.9	0.7	0.8	0.9	0.6
15-19	1.0	1.2	0.8	1.1	1.3	0.8	0.9	1.0	0.8
20-24	1.1	1.4	0.9	1.2	1.4	0.9	1.0	1.2	0.7
25-29	1.1	1.2	0.9	1.0	1.2	0.8	1.2	1.4	1.1
30-34	1.2	1.4	1.0	1.3	1.5	1.0	1.5	1.7	1.2
35-39	1.5	1.6	1.3	1.5	1.5	1.4	1.7	2.1	1.3
40-44	1.9	2.1	1.7	1.9	2.1	1.7	2.2	2.4	1.9
45-49	2.8	3.1	2.5	2.8	3.1	2.5	3.1	3.5	2.8
50-54	4.3	5.0	3.6	4.3	4.9	3.6	5.3	6.3	4.4
55-59	7.2	9.0	5.5	7.3	9.1	5.5	7.8	9.9	6.0
60-64	12.5	16.1	9.2	12.8	16.5	9.3	12.9	16.3	10.2
65-69	20.2	27.1	14.3	20.9	27.8	14.7	19.4	27.2	13.6
70-74	32.4	44.8	22.4	33.5	46.2	23.1	28.7	40.4	20.8
75-79	46.5	65.5	32.9	48.0	67.7	33.8	38.0	51.3	30.2
80-84	62.2	88.2	46.2	64.5	91.6	47.8	45.8	62.2	37.2
85+	80.3	114.1	65.4	83.4	119.4	67.5	58.7	76.1	51.9

^a SEER 17 areas. Rates are per 100,000 and are age-adjusted to the 2000 US Std Population (19 age groups - Census P25-1130), unless noted.

^b US Mortality Files, National Center for Health Statistics, Centers for Disease Control and Prevention. Rates are per 100,000 and are age-adjusted to the 2000 US Std Population (19 age groups - Census P25-1130), unless noted.

^c Rates are per 100,000 and are age-adjusted to the IARC world standard population.

- Statistic not shown. Rate based on less than 16 cases for the time interval.

Table XIII-9
LYMPHOCYTIC LEUKEMIA

SEER INCIDENCE^a RATES, AGE-ADJUSTED AND AGE-SPECIFIC RATES, BY RACE AND SEX

	All Races			Whites			Blacks		
	Total	Males	Females	Total	Males	Females	Total	Males	Females
<u>ACUTE LYMPHOCYTIC LEUKEMIA</u>									
<u>AGE AT DIAGNOSIS</u>									
AGE-ADJUSTED RATES, 2001-2005									
All ages	1.6	1.8	1.4	1.7	2.0	1.5	0.9	0.9	0.8
Under 65	1.6	1.8	1.4	1.8	2.0	1.5	0.9	1.0	0.8
65 and over	1.4	1.6	1.3	1.5	1.7	1.4	0.9	-	1.0
All ages(IARC world std) ^b	2.0	2.2	1.7	2.1	2.4	1.8	1.0	1.1	0.9
AGE-SPECIFIC RATES, 2001-2005									
<1	1.9	1.8	2.1	2.0	1.8	2.2	-	-	-
1-4	7.7	8.5	6.7	8.4	9.4	7.3	3.3	3.9	2.6
5-9	3.3	3.5	3.1	3.6	3.8	3.4	1.5	1.4	1.7
10-14	2.1	2.3	1.8	2.3	2.5	2.0	1.3	1.4	1.1
15-19	1.7	2.4	0.9	1.9	2.8	1.0	0.7	-	-
20-24	0.9	1.3	0.5	1.0	1.4	0.5	0.6	1.0	-
25-29	0.7	0.8	0.5	0.7	0.9	0.6	-	-	-
30-34	0.7	0.8	0.6	0.7	0.9	0.6	-	-	-
35-39	0.6	0.8	0.5	0.7	0.9	0.5	-	-	-
40-44	0.7	0.8	0.6	0.7	0.7	0.6	0.6	-	-
45-49	0.7	0.8	0.6	0.7	0.8	0.6	-	-	-
50-54	0.8	0.9	0.7	0.8	0.9	0.7	0.7	-	-
55-59	1.0	0.9	1.1	1.1	0.9	1.2	-	-	-
60-64	1.0	1.3	0.9	1.1	1.3	0.8	-	-	-
65-69	1.2	1.2	1.3	1.4	1.4	1.4	-	-	-
70-74	1.5	1.8	1.2	1.5	1.9	1.2	-	-	-
75-79	1.6	1.7	1.5	1.6	1.7	1.5	-	-	-
80-84	1.3	1.3	1.3	1.3	1.3	1.4	-	-	-
85+	1.8	2.2	1.6	1.9	2.4	1.7	-	-	-
<u>CHRONIC LYMPHOCYTIC LEUKEMIA</u>									
<u>AGE AT DIAGNOSIS</u>									
AGE-ADJUSTED RATES, 2001-2005									
All ages	4.0	5.6	2.8	4.3	6.0	3.0	3.1	4.4	2.2
Under 65	1.3	1.7	0.8	1.3	1.8	0.9	1.0	1.5	0.5
65 and over	23.2	32.5	16.8	24.6	34.6	17.7	17.5	24.5	13.3
All ages(IARC world std) ^b	2.4	3.4	1.7	2.6	3.5	1.8	1.9	2.7	1.3
AGE-SPECIFIC RATES, 2001-2005									
<1	-	-	-	-	-	-	-	-	-
1-4	-	-	-	-	-	-	-	-	-
5-9	-	-	-	-	-	-	-	-	-
10-14	-	-	-	-	-	-	-	-	-
15-19	-	-	-	-	-	-	-	-	-
20-24	-	-	-	-	-	-	-	-	-
25-29	-	-	-	-	-	-	-	-	-
30-34	0.1	0.1	-	0.1	-	-	-	-	-
35-39	0.2	0.3	0.2	0.2	0.3	0.2	-	-	-
40-44	0.6	0.9	0.4	0.7	0.9	0.4	0.5	-	-
45-49	1.7	2.2	1.2	1.8	2.4	1.3	1.1	1.6	-
50-54	3.3	4.4	2.2	3.5	4.5	2.4	2.6	4.0	1.5
55-59	6.2	8.6	4.0	6.6	9.0	4.3	4.3	6.7	2.3
60-64	10.3	14.4	6.6	10.9	14.9	7.1	8.4	13.4	4.4
65-69	15.4	20.5	11.1	16.4	21.7	11.8	13.1	17.2	9.9
70-74	19.9	27.6	13.8	21.3	29.5	14.5	16.1	21.2	12.5
75-79	26.6	37.3	18.9	28.1	39.4	20.0	20.1	30.1	13.9
80-84	30.1	42.9	22.1	31.9	45.9	23.2	22.4	31.6	17.3
85+	32.9	48.5	25.7	34.9	52.5	26.9	20.3	29.2	16.6

^a SEER 17 areas. Rates are per 100,000 and are age-adjusted to the 2000 US Std Population (19 age groups - Census P25-1130), unless noted.

^b Rates are per 100,000 and are age-adjusted to the IARC world standard population.

- Statistic not shown. Rate based on less than 16 cases for the time interval.

Table XIII-10
MYELOID LEUKEMIASEER INCIDENCE^a RATES, AGE-ADJUSTED AND AGE-SPECIFIC RATES, BY RACE AND SEX

	All Races			Whites			Blacks		
	Total	Males	Females	Total	Males	Females	Total	Males	Females
<u>ACUTE MYELOID LEUKEMIA</u>									
<u>AGE AT DIAGNOSIS</u>									
AGE-ADJUSTED RATES, 2001-2005									
All ages	3.6	4.5	2.9	3.7	4.6	3.0	3.1	3.8	2.6
Under 65	1.7	1.9	1.6	1.7	1.9	1.6	1.6	1.8	1.5
65 and over	16.4	22.4	12.3	17.0	23.3	12.7	13.0	17.0	10.4
All ages(IARC world std) ^b	2.5	2.9	2.1	2.5	3.0	2.1	2.2	2.6	1.8
AGE-SPECIFIC RATES, 2001-2005									
<1	1.5	1.6	1.4	1.6	1.7	1.5	-	-	-
1-4	0.9	1.0	0.8	0.8	0.9	0.7	0.9	1.1	-
5-9	0.4	0.5	0.4	0.4	0.5	0.4	-	-	-
10-14	0.7	0.7	0.6	0.6	0.7	0.6	0.8	0.9	-
15-19	0.9	1.0	0.8	0.9	1.0	0.8	0.7	-	-
20-24	0.9	0.9	0.8	0.9	1.0	0.9	0.8	-	-
25-29	0.9	0.9	0.9	1.0	1.0	1.0	0.6	-	-
30-34	1.2	1.2	1.1	1.2	1.2	1.2	1.3	1.5	1.1
35-39	1.3	1.3	1.2	1.3	1.3	1.2	1.4	1.6	1.1
40-44	1.7	1.8	1.6	1.7	1.8	1.6	1.3	1.6	1.0
45-49	2.3	2.4	2.1	2.2	2.4	2.1	2.5	2.6	2.4
50-54	3.1	3.4	2.9	3.1	3.4	2.9	2.8	3.0	2.6
55-59	4.6	5.1	4.2	4.7	5.3	4.1	4.7	5.0	4.4
60-64	6.8	8.1	5.7	7.1	8.4	5.9	6.2	7.2	5.4
65-69	10.3	13.2	7.8	10.9	13.8	8.4	8.2	11.0	6.1
70-74	14.8	19.8	10.8	15.3	20.6	11.0	13.0	18.5	9.1
75-79	18.7	25.8	13.7	19.2	26.4	14.0	13.3	17.4	10.8
80-84	23.1	32.6	17.2	24.0	33.8	17.9	16.8	22.7	13.5
85+	21.1	30.4	16.9	21.9	32.6	17.1	18.9	20.5	18.2
<u>CHRONIC MYELOID LEUKEMIA</u>									
<u>AGE AT DIAGNOSIS</u>									
AGE-ADJUSTED RATES, 2001-2005									
All ages	1.5	1.9	1.1	1.5	2.0	1.2	1.5	2.0	1.1
Under 65	0.7	0.9	0.6	0.7	0.9	0.6	0.8	1.1	0.6
65 and over	6.7	9.1	5.0	6.9	9.4	5.2	6.0	8.4	4.5
All ages(IARC world std) ^b	1.0	1.3	0.8	1.0	1.3	0.8	1.0	1.3	0.8
AGE-SPECIFIC RATES, 2001-2005									
<1	0.3	-	-	-	-	-	-	-	-
1-4	0.1	0.2	-	0.1	-	-	-	-	-
5-9	-	-	-	-	-	-	-	-	-
10-14	0.1	0.1	-	0.1	-	-	-	-	-
15-19	0.2	0.2	0.2	0.2	0.2	-	-	-	-
20-24	0.3	0.4	0.2	0.3	0.4	0.2	-	-	-
25-29	0.5	0.6	0.4	0.5	0.5	0.4	0.7	-	-
30-34	0.6	0.7	0.5	0.6	0.7	0.5	0.7	-	-
35-39	0.9	1.1	0.6	0.9	1.1	0.6	1.0	1.4	-
40-44	1.0	1.2	0.9	0.9	1.0	0.8	1.4	2.0	0.9
45-49	1.2	1.3	1.0	1.1	1.3	1.0	1.3	1.6	-
50-54	1.4	1.7	1.2	1.4	1.7	1.1	1.3	-	1.2
55-59	1.9	2.4	1.3	1.9	2.4	1.3	2.0	3.0	-
60-64	2.7	3.4	2.1	2.7	3.4	2.1	3.3	4.0	2.7
65-69	4.1	5.5	2.8	4.1	5.6	2.9	3.2	5.1	-
70-74	5.7	7.6	4.2	5.8	7.8	4.2	6.1	7.6	5.1
75-79	7.8	10.5	5.9	8.2	10.8	6.3	7.3	11.5	4.7
80-84	9.1	13.1	6.6	9.7	13.7	7.1	7.0	11.0	-
85+	9.6	13.2	8.0	9.9	13.7	8.2	8.4	-	8.3

^a SEER 17 areas. Rates are per 100,000 and are age-adjusted to the 2000 US Std Population (19 age groups - Census P25-1130), unless noted.

^b US Mortality Files, National Center for Health Statistics, Centers for Disease Control and Prevention. Rates are per 100,000 and are age-adjusted to the 2000 US Std Population (19 age groups - Census P25-1130), unless noted.

^c Rates are per 100,000 and are age-adjusted to the IARC world standard population.

- Statistic not shown. Rate based on less than 16 cases for the time interval.

Table XIII-11
LEUKEMIA

SURVIVAL RATES, BY RACE, SEX, DIAGNOSIS YEAR AND AGE

	All Races			Whites			Blacks		
	Total	Males	Females	Total	Males	Females	Total	Males	Females
<u>5-YR RELATIVE SURVIVAL RATES</u>									
YEAR OF DIAGNOSIS:									
1960-1963 ^a	-	-	-	14	-	-	-	-	-
1970-1973 ^a	-	-	-	22	-	-	-	-	-
1975-1977 ^b	35.4	34.4	36.7	36.0	35.0	37.1	33.5	30.4	36.7
1978-1980 ^b	37.8	36.8	39.1	38.5	37.6	39.7	29.4	28.5	30.5
1981-1983 ^b	39.2	39.0	39.6	40.2	40.0	40.4	34.2	33.4	35.0
1984-1986 ^b	41.9	41.3	42.6	43.1	42.6	43.7	33.7	32.5	35.0
1987-1989 ^b	44.4	45.9	42.5	45.5	47.5	42.9	36.7	35.0	38.7
1990-1992 ^b	46.7	46.4	47.1	48.0	48.2	47.8	37.4	31.6	43.7
1993-1995 ^b	48.5	49.2	47.7	49.5	50.1	48.6	42.3	41.6	43.1
1996-2004 ^b	51.2 ^e	51.5 ^e	50.8 ^e	52.2 ^e	52.4 ^e	51.9 ^e	42.4	42.2 ^e	42.5
<u>5-YR PERIOD SURVIVAL RATES^{cd}</u>									
YEAR OF DIAGNOSIS:									
1996-2004	53.4	54.0	52.7	53.6	54.3	52.6	47.0	46.2	47.8
<u>5-YR RELATIVE SURVIVAL RATES, 1996-2004^c</u>									
AGE AT DIAGNOSIS:									
<45	66.8	65.8	68.1	68.2	67.3	69.4	54.8	51.4	59.1
45-54	57.5	59.4	54.7	58.9	60.3	56.7	46.9	50.4	42.3
55-64	54.3	54.8	53.3	55.8	56.3	55.0	37.3	35.9	39.1
65-74	44.1	42.4	46.8	45.0	43.0	48.1	36.8	35.5	38.0
75+	30.9	30.2	31.7	31.5	30.7	32.3	25.4	20.2	26.7
Under 65	61.3	61.2	61.4	62.6	62.4	62.8	48.8	47.7	50.3
65 and over	37.4	36.8	38.1	38.0	37.3	38.9	31.7	30.8	32.1

- ^a Rates are based on End Results data from a series of hospital registries and one population-based registry.
- ^b Rates are from the SEER 9 areas (San Francisco, Connecticut, Detroit, Hawaii, Iowa, New Mexico, Seattle, Utah, Atlanta).
- ^c Rates are based on follow-up of patients into 2005.
- ^d Rates are from the SEER 17 areas (San Francisco, Connecticut, Detroit, Hawaii, Iowa, New Mexico, Seattle, Utah, Atlanta, San Jose-Monterey, Los Angeles, Alaska Native Registry, Rural Georgia, California excluding SF/SJM/LA, Kentucky, Louisiana and New Jersey). California excluding SF/SJM/LA, Kentucky, Louisiana, and New Jersey contribute cases for diagnosis years 2000-2004. The remaining 13 SEER Areas contribute cases for the entire period 1996-2004. Rates are based on follow-up of patients into 2005.
- ^e Period survival provides a more up-to-date estimate of survival by piecing together the most recent conditional survival estimates from several cohorts. It is computed here using three calendar year blocks (2002-2004: 0-1 year survival), (2001-2003: 1-2 year survival), (2000-2002: 2-3 year survival), (1999-2001: 3-4 year survival), (1998-2000: 4-5 years survival).
- ^f The difference in rates between 1975-1977 and 1996-2004 is statistically significant ($p < .05$).
- ^g The standard error of the survival rate is between 5 and 10 percentage points.
- The standard error of the survival rate is greater than 10 percentage points.
- Statistic could not be calculated due to fewer than 16 cases during the time period.

Table XIII-12
LYMPHOCYTIC LEUKEMIA

SURVIVAL RATES, BY RACE, SEX, DIAGNOSIS YEAR AND AGE

	All Races			Whites			Blacks		
	Total	Males	Females	Total	Males	Females	Total	Males	Females
ACUTE LYMPHOCYTIC LEUKEMIA									
5-YR RELATIVE SURVIVAL RATES									
YEAR OF DIAGNOSIS:									
1975-1977 ^a	42.4	38.6	47.4	42.8	39.2	47.9	34.5 ^e	-	38.9 ^f
1978-1980 ^a	50.4	46.8	55.6	50.8	47.4	55.5	31.7 ^e	31.4 ^e	-
1981-1983 ^a	52.0	48.7	56.4	52.8	49.6	57.2	43.4 ^e	37.6 ^e	49.1 ^e
1984-1986 ^a	53.5	50.3	57.8	54.5	50.6	59.9	36.0 ^e	43.6 ^e	27.4 ^e
1987-1989 ^a	56.1	55.7	56.7	56.9	57.0	56.6	46.1 ^e	43.1 ^e	48.0 ^e
1990-1992 ^a	59.7	56.3	64.6	59.6	57.0	63.5	57.8 ^e	51.0 ^e	63.8 ^e
1993-1995 ^a	61.5	58.7	65.3	61.0	58.6	64.2	53.9 ^e	45.7 ^e	65.0 ^e
1996-2004 ^a	66.1 ^d	64.8 ^d	67.9 ^d	67.1 ^d	65.8 ^d	68.8 ^d	58.3 ^d	54.6 ^e	62.8 ^e
5-YR PERIOD SURVIVAL RATES^{bc}									
YEAR OF DIAGNOSIS:									
1996-2004	65.7	64.5	67.1	65.8	65.3	66.3	64.2	52.0	79.2
5-YR RELATIVE SURVIVAL RATES, 1996-2004^b									
AGE AT DIAGNOSIS:									
<45	74.5	72.1	77.8	75.2	72.9	78.4	65.9	59.1	74.4
45-54	24.1	24.7	23.0	24.2	25.1	22.7	12.8 ^e	17.5 ^e	-
55-64	16.5	15.9	16.8	15.4	15.5	15.1	11.8 ^e	-	-
65-74	9.6	9.2	10.4	10.7	10.6	11.3	0.0	-	-
75+	7.0	3.4	8.9	5.6	-	8.1	-	-	-
Under 65	68.6	66.8	71.2	69.2	67.5	71.6	60.0	54.2	67.2
65 and over	8.4	7.1	9.6	8.5	7.3	9.7	10.8 ^e	-	13.1 ^f
CHRONIC LYMPHOCYTIC LEUKEMIA									
5-YR RELATIVE SURVIVAL RATES									
YEAR OF DIAGNOSIS:									
1975-1977 ^a	69.0	66.8	71.8	69.8	67.5	72.8	57.2 ^e	56.3 ^e	57.9 ^e
1978-1980 ^a	70.6	67.9	74.3	71.4	68.4	75.3	59.2 ^e	59.6 ^e	58.4 ^e
1981-1983 ^a	68.4	67.9	69.2	69.1	68.9	69.5	57.6 ^e	54.3 ^e	62.9 ^e
1984-1986 ^a	73.9	72.5	75.8	74.1	72.7	76.0	70.1 ^e	67.3 ^e	70.5 ^e
1987-1989 ^a	74.5	74.6	74.5	75.6	75.8	75.3	60.4	59.0 ^e	62.5 ^e
1990-1992 ^a	75.6	74.2	77.4	76.7	75.6	78.3	54.0 ^e	45.3 ^e	62.7 ^e
1993-1995 ^a	77.6	77.0	78.3	78.4	77.8	79.3	64.4	63.0 ^e	66.4 ^e
1996-2004 ^a	76.2 ^d	75.2 ^d	77.6 ^d	76.8 ^d	75.9 ^d	78.2 ^d	60.0	54.0	66.6 ^e
5-YR PERIOD SURVIVAL RATES^{bc}									
YEAR OF DIAGNOSIS:									
1996-2004	76.4	75.8	77.2	76.5	76.1	77.2	64.6	60.3	70.1
5-YR RELATIVE SURVIVAL RATES, 1996-2004^b									
AGE AT DIAGNOSIS:									
<45	89.0	89.0	88.7	91.3	90.5	92.9	63.8 ^e	70.6 ^f	54.5 ^f
45-54	85.5	83.8	88.9	86.8	84.7	91.1	67.9 ^e	65.1 ^e	74.5 ^e
55-64	83.4	81.0	88.3	84.3	82.6	87.9	63.2	52.4 ^e	82.9 ^e
65-74	77.6	73.5	84.3	78.2	74.0	84.6	64.7	60.5 ^e	70.1 ^e
75+	62.3	60.9	63.7	62.6	61.0	64.1	50.8 ^e	35.8 ^e	59.2 ^e
Under 65	84.6	82.7	88.6	85.8	84.0	89.4	64.9	58.9	76.3
65 and over	70.1	68.1	72.7	70.4	68.3	73.0	59.3	53.3	64.7 ^e

^a Rates are from the SEER 9 areas (San Francisco, Connecticut, Detroit, Hawaii, Iowa, New Mexico, Seattle, Utah, Atlanta). Rates are based on follow-up of patients into 2005.

^b Rates are from the SEER 17 areas (San Francisco, Connecticut, Detroit, Hawaii, Iowa, New Mexico, Seattle, Utah, Atlanta, San Jose-Monterey, Los Angeles, Alaska Native Registry, Rural Georgia, California excluding SF/SJM/LA, Kentucky, Louisiana and New Jersey). California excluding SF/SJM/LA, Kentucky, Louisiana, and New Jersey contribute cases for diagnosis years 2000-2004. The remaining 13 SEER Areas contribute cases for the entire period 1996-2004. Rates are based on follow-up of patients into 2005.

^c Period survival provides a more up-to-date estimate of survival by piecing together the most recent conditional survival estimates from several cohorts. It is computed here using three calendar year blocks (2002-2004: 0-1 year survival), (2001-2003: 1-2 year survival), (2000-2002: 2-3 year survival), (1999-2001: 3-4 year survival), (1998-2000: 4-5 years survival).

^d The difference in rates between 1975-1977 and 1996-2004 is statistically significant ($p < .05$).

^e The standard error of the survival rate is between 5 and 10 percentage points.

^f The standard error of the survival rate is greater than 10 percentage points.

- Statistic could not be calculated due to fewer than 16 cases during the time period.

Table XIII-13
MYELOID LEUKEMIA

	SURVIVAL RATES, BY RACE, SEX, DIAGNOSIS YEAR AND AGE								
	All Races			Whites			Blacks		
	Total	Males	Females	Total	Males	Females	Total	Males	Females
ACUTE MYELOID LEUKEMIA									
5-YR RELATIVE SURVIVAL RATES									
YEAR OF DIAGNOSIS:									
1975-1977 ^a	6.6	6.1	7.1	6.3	6.1	6.5	10.6	8.5 ^e	12.1 ^e
1978-1980 ^a	8.4	7.9	9.0	7.8	6.9	8.8	10.2	7.2	13.2
1981-1983 ^a	9.5	8.3	10.8	8.7	7.3	10.4	12.5	16.4 ^e	8.8
1984-1986 ^a	12.0	10.5	13.7	11.8	10.4	13.3	10.2	6.8	13.3
1987-1989 ^a	12.8	10.4	15.4	12.7	11.1	14.5	10.1	4.7	16.9 ^e
1990-1992 ^a	15.3	13.8	17.0	15.1	13.5	16.8	14.6	14.3	14.7
1993-1995 ^a	18.0	16.6	19.6	17.3	15.9	19.0	23.6	22.7 ^e	23.5 ^e
1996-2004 ^a	21.3 ^d	20.0 ^d	23.0 ^d	20.6 ^d	18.8 ^d	22.6 ^d	24.5 ^d	28.0 ^d	19.9
5-YR PERIOD SURVIVAL RATES^{bc}									
YEAR OF DIAGNOSIS:									
1996-2004	23.2	22.4	24.0	22.2	21.6	22.9	26.7	28.3	23.8
5-YR RELATIVE SURVIVAL RATES, 1996-2004^b									
AGE AT DIAGNOSIS:									
<45	50.0	48.3	51.9	50.9	49.7	52.2	41.8	41.2	42.4
45-54	28.5	28.2	28.8	28.7	27.2	30.5	28.4	31.9 ^e	23.5 ^e
55-64	17.9	15.7	20.6	18.0	15.7	21.1	13.8	14.6	12.4 ^e
65-74	7.4	6.2	9.1	7.3	6.2	8.9	6.2	7.0	0.0
75+	1.8	1.2	2.3	1.8	1.2	2.2	2.5	-	3.3
Under 65	35.8	33.9	38.0	35.8	33.7	38.3	32.6	33.6	30.8
65 and over	4.5	3.8	5.2	4.4	3.8	5.0	4.6	4.9	3.2
CHRONIC MYELOID LEUKEMIA									
5-YR RELATIVE SURVIVAL RATES									
YEAR OF DIAGNOSIS:									
1975-1977 ^a	23.9	21.5	27.1	22.6	20.5	25.5	28.7 ^e	22.6 ^e	36.0 ^e
1978-1980 ^a	25.1	24.1	26.2	25.4	25.0	25.7	22.0 ^e	20.9 ^e	23.6 ^e
1981-1983 ^a	30.5	26.5	35.2	31.1	27.5	35.0	30.2	20.6 ^e	41.3 ^e
1984-1986 ^a	23.8	21.6	26.9	24.4	21.7	28.3	22.2	21.4 ^e	22.6 ^e
1987-1989 ^a	32.2	32.9	31.1	32.1	33.4	30.4	35.7 ^e	30.3 ^e	43.8 ^e
1990-1992 ^a	32.5	31.2	34.1	32.1	32.2	32.0	36.0 ^e	24.3 ^e	48.3 ^e
1993-1995 ^a	37.3	36.9	37.8	37.1	37.2	37.0	35.7 ^e	32.8 ^e	40.5 ^e
1996-2004 ^a	46.7 ^d	45.5 ^d	48.4 ^d	46.3 ^d	44.5 ^d	48.2 ^d	44.0	43.9	43.6 ^e
5-YR PERIOD SURVIVAL RATES^{bc}									
YEAR OF DIAGNOSIS:									
1996-2004	57.7	57.8	57.5	56.0	55.6	56.4	58.9	57.9	59.2
5-YR RELATIVE SURVIVAL RATES, 1996-2004^b									
AGE AT DIAGNOSIS:									
<45	69.8	68.5	71.9	70.3	68.0	74.3	65.0	62.9 ^e	68.3 ^e
45-54	68.6	66.7	70.8	69.2	67.4	71.1	60.6 ^e	56.9 ^e	63.5 ^f
55-64	56.8	55.5	58.5	58.9	56.4	62.8	40.0 ^e	41.6 ^e	35.0 ^f
65-74	33.7	31.6	36.9	32.9	30.0	37.6	30.5 ^e	27.3 ^e	33.1 ^e
75+	20.5	18.5	22.7	20.0	17.4	22.9	19.0 ^e	13.2 ^e	15.5 ^f
Under 65	66.0	64.6	68.1	66.8	64.5	70.2	58.2	57.1	59.1 ^e
65 and over	27.0	25.3	29.0	26.1	23.9	28.9	26.7	23.4 ^e	28.6 ^e

^a Rates are from the SEER 9 areas (San Francisco, Connecticut, Detroit, Hawaii, Iowa, New Mexico, Seattle, Utah, Atlanta). Rates are based on follow-up of patients into 2005.

^b Rates are from the SEER 17 areas (San Francisco, Connecticut, Detroit, Hawaii, Iowa, New Mexico, Seattle, Utah, Atlanta, San Jose-Monterey, Los Angeles, Alaska Native Registry, Rural Georgia, California excluding SF/SJM/LA, Kentucky, Louisiana and New Jersey). California excluding SF/SJM/LA, Kentucky, Louisiana, and New Jersey contribute cases for diagnosis years 2000-2004. The remaining 13 SEER Areas contribute cases for the entire period 1996-2004. Rates are based on follow-up of patients into 2005.

^c Period survival provides a more up-to-date estimate of survival by piecing together the most recent conditional survival estimates from several cohorts. It is computed here using three calendar year blocks (2002-2004: 0-1 year survival), (2001-2003: 1-2 year survival), (2000-2002: 2-3 year survival), (1999-2001: 3-4 year survival), (1998-2000: 4-5 years survival).

^d The difference in rates between 1975-1977 and 1996-2004 is statistically significant ($p < .05$).

^e The standard error of the survival rate is between 5 and 10 percentage points.

^f The standard error of the survival rate is greater than 10 percentage points.

- Statistic could not be calculated due to fewer than 16 cases during the time period.

Table XIII-14

LEUKEMIASURVIVAL RATES^a

By Year of Diagnosis

All Races, Males and Females

Year of Diagnosis

	1975- 1979	1980- 1984	1985	1986	1987	1988	1989	1990	1991	1992	1993	1994	1995	1996	1997	1998	1999	2000	2001	2002	2003	2004
Relative Survival Rates (SEER ^b)																						
1-year	61.6	63.8	65.1	65.3	64.8	67.1	65.3	67.5	66.8	67.9	68.1	67.3	68.5	68.7	68.3	66.6	65.8	66.1	69.5	70.7	72.0	73.3
2-year	51.1	53.6	56.0	55.8	54.7	57.4	56.7	56.9	57.5	59.0	58.9	58.5	59.2	60.0	60.1	57.9	58.5	57.8	61.7	62.7	64.1	
3-year	44.8	47.9	49.7	49.8	49.5	51.8	51.7	52.2	52.0	54.2	55.2	54.2	54.5	55.5	55.5	54.1	54.8	54.1	57.8	59.7		
4-year	40.1	43.2	46.0	45.9	45.9	48.4	47.3	48.9	47.9	50.7	51.8	51.0	51.1	52.3	51.8	50.5	51.9	51.1	55.4			
5-year	36.1	39.4	42.8	42.7	42.8	45.6	44.7	46.6	45.5	47.9	48.5	48.4	48.6	49.2	49.4	48.8	48.9	49.2				
6-year	33.0	36.9	40.3	40.6	41.0	43.5	41.9	43.1	43.6	45.5	46.4	46.0	46.5	47.4	47.4	47.0	46.9					
7-year	30.9	34.5	38.5	38.5	38.2	40.7	39.3	40.7	41.1	42.9	43.9	44.1	45.5	46.5	45.7	46.0						
8-year	28.8	32.6	36.5	36.4	36.2	38.3	37.6	38.7	38.8	41.0	43.0	41.8	43.2	45.5	45.6							
9-year	27.1	31.0	34.1	34.9	34.5	36.9	35.9	37.4	37.7	39.4	41.6	40.6	42.3	44.0								
10-year	25.8	29.7	33.4	33.7	32.9	35.7	34.5	36.0	36.7	38.7	40.8	40.2	41.1									
11-year	24.5	28.7	31.6	32.3	32.0	34.0	33.1	34.6	35.5	37.4	40.4	39.2										
12-year	23.5	27.8	31.1	31.6	30.6	33.0	32.5	33.1	35.0	36.9	39.9											
13-year	22.9	27.0	30.6	31.1	29.8	32.1	32.2	32.1	34.9	36.8												
14-year	22.3	26.6	29.8	30.5	29.8	31.4	32.2	31.9	34.4													
15-year	21.8	26.1	29.4	29.7	29.8	31.4	31.9	31.9														
16-year	21.2	25.5	28.9	29.2	29.6	31.2	31.9															
17-year	20.8	24.8	28.4	29.2	29.6	30.8																
18-year	20.6	24.6	27.9	29.2	29.6																	
19-year	20.2	24.2	27.5	29.2																		
20-year	19.7	24.1	27.5																			

^a Survival rates are relative rates expressed as percents.^b Rates are from the SEER 9 areas (San Francisco, Connecticut, Detroit, Hawaii, Iowa, New Mexico, Seattle, Utah, and Atlanta).

Table XIII-15

LEUKEMIASURVIVAL RATES^a

By Year of Diagnosis

All Races, Males

Year of Diagnosis

	1975- 1979	1980- 1984	1985	1986	1987	1988	1989	1990	1991	1992	1993	1994	1995	1996	1997	1998	1999	2000	2001	2002	2003	2004
Relative Survival Rates (SEER ^b)																						
1-year	61.4	64.1	65.9	65.3	66.3	68.2	65.5	68.2	68.0	68.4	69.2	69.2	70.1	70.2	69.1	66.6	66.7	67.6	71.6	71.5	73.0	74.9
2-year	50.6	53.6	55.9	55.7	57.1	58.2	57.8	56.9	58.6	59.2	60.4	59.7	60.7	61.7	61.1	58.4	59.3	59.4	63.7	62.6	64.7	
3-year	43.9	47.5	48.9	49.2	51.4	52.6	52.4	51.6	52.8	54.2	56.8	54.5	56.0	57.4	55.7	54.7	55.4	56.1	59.6	59.8		
4-year	39.2	42.7	44.9	45.5	48.2	49.1	48.2	48.2	47.8	50.9	53.4	51.9	52.2	54.0	51.2	50.8	52.1	52.5	56.7			
5-year	35.0	38.8	42.5	42.5	44.7	46.9	45.9	44.8	45.6	48.5	49.6	49.0	48.9	50.1	48.8	49.0	48.4	51.3				
6-year	32.0	36.2	39.7	40.7	42.2	44.6	43.2	41.0	43.9	45.7	47.6	46.0	46.2	48.1	47.3	46.9	46.6					
7-year	29.6	33.9	37.6	38.2	39.2	42.1	40.0	38.7	41.3	42.6	44.8	44.1	45.2	47.2	45.7	45.7						
8-year	27.3	31.7	35.5	36.0	37.8	39.5	38.3	36.3	39.0	41.0	43.8	41.2	43.5	46.4	45.4							
9-year	25.4	30.0	33.3	34.0	36.5	37.6	36.5	35.2	37.9	39.7	42.5	39.4	42.5	44.3								
10-year	24.0	28.8	32.4	32.7	34.4	36.1	35.0	33.3	36.6	39.2	41.8	39.0	40.8									
11-year	22.7	27.8	30.6	31.8	33.5	34.9	33.4	32.2	35.2	38.5	41.3	38.1										
12-year	21.6	27.4	30.0	31.0	31.7	34.0	33.1	30.7	34.3	37.8	40.5											
13-year	21.2	26.7	29.6	30.7	30.6	33.3	32.8	30.0	33.9	37.7												
14-year	20.5	26.4	29.4	30.5	30.6	32.4	32.6	30.0	33.0													
15-year	20.1	25.9	28.3	29.7	30.6	32.1	32.5	30.0														
16-year	19.5	25.1	27.4	29.6	30.2	31.3	32.5															
17-year	19.2	24.4	27.3	29.6	30.1	31.2																
18-year	18.9	24.1	26.4	29.6	29.8																	
19-year	18.5	23.7	25.9	29.6																		
20-year	17.6	23.5	25.9																			

^a Survival rates are relative rates expressed as percents.^b Rates are from the SEER 9 areas (San Francisco, Connecticut, Detroit, Hawaii, Iowa, New Mexico, Seattle, Utah, and Atlanta).

Table XIII-16

LEUKEMIASURVIVAL RATES^a

By Year of Diagnosis

All Races, Females

Year of Diagnosis

	1975- 1979	1980- 1984	1985	1986	1987	1988	1989	1990	1991	1992	1993	1994	1995	1996	1997	1998	1999	2000	2001	2002	2003	2004
Relative Survival Rates (SEER ^b)																						
1-year	61.9	63.5	64.0	65.3	62.9	65.5	65.1	66.5	65.2	67.3	66.5	64.8	66.3	66.8	67.2	66.5	64.4	64.0	66.5	69.5	70.7	71.3
2-year	51.7	53.6	56.1	55.8	51.6	56.3	55.3	56.8	56.0	58.6	56.9	57.1	57.1	57.7	58.6	57.2	57.3	55.5	59.1	62.9	63.3	
3-year	45.9	48.5	50.7	50.7	46.9	50.8	50.8	53.0	51.0	54.3	53.1	53.9	52.5	53.1	55.3	53.3	53.9	51.4	55.3	59.6		
4-year	41.3	44.0	47.3	46.4	42.8	47.5	46.3	49.9	48.0	50.5	49.7	49.7	49.6	50.1	52.5	50.2	51.4	49.1	53.7			
5-year	37.4	40.1	43.2	43.0	40.2	43.9	43.3	49.0	45.4	47.0	47.2	47.5	48.3	48.0	50.1	48.6	49.6	46.4				
6-year	34.2	37.8	41.1	40.5	39.4	41.9	40.4	45.9	43.1	45.3	44.8	46.1	47.0	46.5	47.6	47.0	47.4					
7-year	32.5	35.4	39.5	38.9	37.0	38.8	38.4	43.4	40.9	43.1	42.8	44.1	45.7	45.6	45.8	46.2						
8-year	30.7	33.8	37.7	36.9	34.1	36.7	36.7	41.9	38.6	41.0	41.9	42.5	42.7	44.4	45.7							
9-year	29.2	32.4	35.1	35.8	32.0	35.7	35.1	40.2	37.3	39.0	40.4	42.2	42.2	43.6								
10-year	27.9	30.9	34.6	35.1	31.0	34.8	33.7	39.5	36.7	38.0	39.6	41.6	41.3									
11-year	26.8	29.8	32.8	33.1	30.1	32.5	32.8	37.7	35.8	35.9	39.1	40.7										
12-year	25.7	28.3	32.1	32.2	29.3	31.6	31.9	36.3	35.6	35.2	38.8											
13-year	24.9	27.3	31.7	31.6	28.2	30.0	31.5	34.7	35.6	35.2												
14-year	24.3	26.9	30.2	30.4	28.2	30.0	31.5	33.8	35.6													
15-year	23.7	26.3	30.2	29.7	28.2	30.0	31.2	33.8														
16-year	23.1	25.8	30.2	28.5	28.2	30.0	31.2															
17-year	22.7	25.3	29.8	28.4	28.2	30.0																
18-year	22.6	25.3	29.5	28.2	28.2																	
19-year	22.3	24.7	29.2	28.2																		
20-year	22.2	24.7	29.2																			

^a Survival rates are relative rates expressed as percents.^b Rates are from the SEER 9 areas (San Francisco, Connecticut, Detroit, Hawaii, Iowa, New Mexico, Seattle, Utah, and Atlanta).

Table XIII-17

LEUKEMIA

Risk of Being Diagnosed With Cancer in 10, 20 and 30 Years, Lifetime Risk of Being Diagnosed with Cancer, and
Lifetime Risk of Dying from Cancer Given Cancer Free At Current Age
Both Sexes, 2003-2005 By Race/Ethnicity

Race/ Ethnicity	Current Age	Risk of Being Diagnosed with Cancer						Risk of Dying from Cancer	
		+10 yrs Percent (95% C.I.)	+20 yrs Percent (95% C.I.)	+30 yrs Percent (95% C.I.)	Eventually Percent (95% C.I.)	Eventually Percent (95% C.I.)			
All Races	0	0.06 (0.06, 0.06)	0.09 (0.08, 0.09)	0.11 (0.11, 0.11)	1.27 (1.25, 1.28)	0.83 (0.83, 0.84)			
	10	0.03 (0.03, 0.03)	0.05 (0.05, 0.06)	0.09 (0.08, 0.09)	1.23 (1.21, 1.24)	0.84 (0.83, 0.84)			
	20	0.02 (0.02, 0.03)	0.06 (0.05, 0.06)	0.11 (0.11, 0.12)	1.20 (1.19, 1.22)	0.83 (0.83, 0.84)			
	30	0.03 (0.03, 0.03)	0.09 (0.09, 0.09)	0.21 (0.20, 0.21)	1.19 (1.17, 1.21)	0.83 (0.82, 0.84)			
	40	0.06 (0.06, 0.06)	0.18 (0.18, 0.18)	0.43 (0.42, 0.43)	1.17 (1.16, 1.19)	0.83 (0.82, 0.84)			
	50	0.13 (0.12, 0.13)	0.38 (0.37, 0.39)	0.75 (0.74, 0.77)	1.15 (1.13, 1.16)	0.83 (0.82, 0.84)			
	60	0.27 (0.26, 0.28)	0.67 (0.66, 0.68)	0.99 (0.97, 1.01)	1.09 (1.07, 1.10)	0.83 (0.82, 0.83)			
	70	0.46 (0.45, 0.47)	0.83 (0.81, 0.84)	- (- , -)	0.94 (0.92, 0.96)	0.78 (0.77, 0.79)			
80	0.52 (0.51, 0.54)	- (- , -)	- (- , -)	0.68 (0.66, 0.70)	0.64 (0.63, 0.65)				
White	0	0.06 (0.06, 0.06)	0.09 (0.09, 0.10)	0.12 (0.11, 0.12)	1.32 (1.31, 1.34)	0.87 (0.86, 0.88)			
	10	0.03 (0.03, 0.03)	0.06 (0.05, 0.06)	0.09 (0.09, 0.09)	1.28 (1.26, 1.30)	0.87 (0.87, 0.88)			
	20	0.03 (0.02, 0.03)	0.06 (0.06, 0.06)	0.12 (0.11, 0.12)	1.25 (1.23, 1.27)	0.87 (0.86, 0.88)			
	30	0.03 (0.03, 0.03)	0.09 (0.09, 0.09)	0.21 (0.21, 0.22)	1.24 (1.22, 1.25)	0.87 (0.86, 0.87)			
	40	0.06 (0.06, 0.06)	0.18 (0.18, 0.19)	0.44 (0.43, 0.45)	1.22 (1.20, 1.24)	0.86 (0.86, 0.87)			
	50	0.13 (0.12, 0.13)	0.40 (0.39, 0.40)	0.79 (0.77, 0.80)	1.19 (1.17, 1.21)	0.86 (0.86, 0.87)			
	60	0.28 (0.28, 0.29)	0.70 (0.69, 0.71)	1.03 (1.01, 1.05)	1.13 (1.11, 1.15)	0.86 (0.85, 0.87)			
	70	0.48 (0.47, 0.49)	0.86 (0.84, 0.88)	- (- , -)	0.97 (0.95, 0.99)	0.81 (0.80, 0.82)			
80	0.54 (0.53, 0.56)	- (- , -)	- (- , -)	0.70 (0.68, 0.72)	0.66 (0.65, 0.67)				
Black	0	0.04 (0.03, 0.04)	0.05 (0.05, 0.06)	0.08 (0.07, 0.08)	0.85 (0.81, 0.89)	0.59 (0.57, 0.61)			
	10	0.02 (0.02, 0.02)	0.04 (0.04, 0.05)	0.07 (0.06, 0.08)	0.83 (0.79, 0.88)	0.60 (0.58, 0.62)			
	20	0.02 (0.02, 0.03)	0.05 (0.05, 0.06)	0.10 (0.10, 0.11)	0.82 (0.78, 0.86)	0.59 (0.58, 0.61)			
	30	0.03 (0.03, 0.04)	0.08 (0.08, 0.09)	0.19 (0.17, 0.20)	0.81 (0.77, 0.85)	0.59 (0.58, 0.61)			
	40	0.05 (0.05, 0.06)	0.16 (0.15, 0.17)	0.35 (0.32, 0.37)	0.80 (0.75, 0.84)	0.59 (0.57, 0.61)			
	50	0.11 (0.10, 0.12)	0.31 (0.29, 0.33)	0.56 (0.53, 0.60)	0.78 (0.74, 0.83)	0.59 (0.58, 0.61)			
	60	0.22 (0.20, 0.24)	0.50 (0.47, 0.54)	0.69 (0.64, 0.73)	0.76 (0.71, 0.81)	0.60 (0.58, 0.62)			
	70	0.35 (0.32, 0.39)	0.58 (0.54, 0.63)	- (- , -)	0.67 (0.62, 0.72)	0.57 (0.54, 0.59)			
80	0.37 (0.33, 0.42)	- (- , -)	- (- , -)	0.51 (0.45, 0.57)	0.47 (0.44, 0.50)				

Devcan Version 7.0.0, April 2008, National Cancer Institute (<http://srab.cancer.gov/devcan/>).

Source: Incidence data are from the SEER 17 areas (San Francisco, Connecticut, Detroit, Hawaii, Iowa, New Mexico, Seattle, Utah, Atlanta, San Jose-Monterey, Los Angeles, Alaska Native Registry, Rural Georgia, California excluding SF/SJM/LA, Kentucky, Louisiana and New Jersey). Mortality data are from the NCHS public use data file for the total US.

- Statistic could not be calculated.

A percent or confidence interval value of 0.00 represents a value that is below 0.005.

Table XIII-17 - continued

LEUKEMIA

Risk of Being Diagnosed With Cancer in 10, 20 and 30 Years, Lifetime Risk of Being Diagnosed with Cancer, and
Lifetime Risk of Dying from Cancer Given Cancer Free At Current Age
Both Sexes, 2003-2005 By Race/Ethnicity

Race/ Ethnicity	Current Age	Risk of Being Diagnosed with Cancer				Risk of Dying from Cancer	
		+10 yrs Percent (95% C.I.)	+20 yrs Percent (95% C.I.)	+30 yrs Percent (95% C.I.)	Eventually Percent (95% C.I.)	Eventually Percent (95% C.I.)	
Asian/ Pacific Islander	0	0.06 (0.05, 0.07)	0.08 (0.07, 0.09)	0.10 (0.09, 0.11)	0.88 (0.82, 0.95)	0.57 (0.52, 0.62)	
	10	0.02 (0.02, 0.03)	0.04 (0.04, 0.05)	0.07 (0.06, 0.08)	0.83 (0.77, 0.90)	0.56 (0.52, 0.62)	
	20	0.02 (0.02, 0.02)	0.05 (0.04, 0.05)	0.09 (0.09, 0.10)	0.81 (0.75, 0.88)	0.56 (0.51, 0.61)	
	30	0.03 (0.02, 0.03)	0.08 (0.07, 0.08)	0.15 (0.13, 0.16)	0.79 (0.73, 0.87)	0.55 (0.50, 0.61)	
	40	0.05 (0.04, 0.05)	0.12 (0.11, 0.13)	0.24 (0.22, 0.27)	0.77 (0.71, 0.84)	0.55 (0.50, 0.60)	
	50	0.07 (0.06, 0.08)	0.20 (0.18, 0.22)	0.42 (0.39, 0.46)	0.73 (0.67, 0.80)	0.54 (0.49, 0.59)	
	60	0.13 (0.12, 0.15)	0.36 (0.33, 0.40)	0.58 (0.54, 0.63)	0.68 (0.62, 0.76)	0.52 (0.47, 0.58)	
	70	0.25 (0.23, 0.28)	0.49 (0.44, 0.54)	- (- , -)	0.60 (0.53, 0.68)	0.48 (0.43, 0.54)	
	80	0.29 (0.25, 0.34)	- (- , -)	- (- , -)	0.42 (0.36, 0.51)	0.36 (0.30, 0.43)	
American Indian/ Alaska Native ^a	0	0.04 (0.02, 0.07)	0.06 (0.04, 0.10)	0.08 (0.06, 0.13)	0.76 (0.54, 1.14)	0.50 (0.42, 0.63)	
	10	0.02 (0.01, 0.04)	0.05 (0.03, 0.07)	0.06 (0.04, 0.09)	0.73 (0.52, 1.12)	0.50 (0.42, 0.63)	
	20	0.02 (0.01, 0.05)	0.04 (0.02, 0.07)	0.07 (0.05, 0.11)	0.72 (0.50, 1.11)	0.50 (0.41, 0.63)	
	30	0.02 (0.01, 0.03)	0.05 (0.03, 0.08)	0.12 (0.08, 0.18)	0.70 (0.48, 1.10)	0.49 (0.40, 0.62)	
	40	0.03 (0.02, 0.06)	0.11 (0.07, 0.17)	0.25 (0.18, 0.35)	0.71 (0.48, 1.12)	0.49 (0.40, 0.63)	
	50	0.08 (0.05, 0.13)	0.23 (0.16, 0.33)	0.42 (0.30, 0.58)	0.70 (0.47, 1.13)	0.50 (0.41, 0.65)	
	60	0.16 (0.09, 0.25)	0.37 (0.25, 0.53)	0.51 (0.35, 0.72)	0.67 (0.42, 1.13)	0.50 (0.40, 0.66)	
	70	0.25 (0.14, 0.39)	0.41 (0.26, 0.64)	- (- , -)	0.60 (0.33, 1.13)	0.50 (0.39, 0.68)	
	80	0.23 (0.10, 0.47)	- (- , -)	- (- , -)	0.49 (0.19, 1.22)	0.45 (0.31, 0.68)	
Hispanic ^b	0	0.06 (0.06, 0.07)	0.10 (0.10, 0.11)	0.13 (0.13, 0.14)	1.11 (1.05, 1.18)	0.63 (0.60, 0.66)	
	10	0.04 (0.04, 0.04)	0.07 (0.07, 0.08)	0.10 (0.10, 0.11)	1.06 (0.99, 1.13)	0.63 (0.60, 0.66)	
	20	0.03 (0.03, 0.03)	0.06 (0.06, 0.07)	0.11 (0.11, 0.12)	1.02 (0.96, 1.09)	0.62 (0.59, 0.65)	
	30	0.03 (0.03, 0.04)	0.08 (0.08, 0.09)	0.18 (0.16, 0.19)	1.00 (0.93, 1.07)	0.61 (0.58, 0.64)	
	40	0.05 (0.05, 0.06)	0.14 (0.13, 0.16)	0.33 (0.31, 0.35)	0.98 (0.91, 1.05)	0.60 (0.57, 0.64)	
	50	0.10 (0.09, 0.10)	0.29 (0.27, 0.31)	0.55 (0.52, 0.59)	0.95 (0.88, 1.02)	0.59 (0.56, 0.63)	
	60	0.20 (0.18, 0.22)	0.48 (0.45, 0.51)	0.73 (0.69, 0.78)	0.89 (0.83, 0.97)	0.57 (0.54, 0.61)	
	70	0.31 (0.28, 0.34)	0.59 (0.55, 0.64)	- (- , -)	0.77 (0.70, 0.86)	0.52 (0.49, 0.56)	
	80	0.37 (0.33, 0.42)	- (- , -)	- (- , -)	0.61 (0.52, 0.71)	0.42 (0.38, 0.47)	

Devcan Version 7.0.0, April 2008, National Cancer Institute (<http://srab.cancer.gov/devcan/>).

Source: Incidence data are from the SEER 17 areas (San Francisco, Connecticut, Detroit, Hawaii, Iowa, New Mexico, Seattle, Utah, Atlanta, San Jose-Monterey, Los Angeles, Alaska Native Registry, Rural Georgia, California excluding SF/SJM/LA, Kentucky, Louisiana and New Jersey). Mortality data are from the NCHS public use data file for the total US.

^a Underlying incidence and mortality data for American Indian/Alaska Native are based on the CHSDA (Contract Health Service Delivery Area) counties.

^b Hispanic is not mutually exclusive from whites, blacks, Asian/Pacific Islanders, and American Indians/Alaska Natives. Underlying incidence data for Hispanics are based on NHIA and exclude cases from the Alaska Native Registry and Kentucky. Underlying mortality data for Hispanics exclude deaths from Minnesota, New Hampshire and North Dakota.

- Statistic could not be calculated.

A percent or confidence interval value of 0.00 represents a value that is below 0.005.

Table XIII-17 - continued

LEUKEMIA

Risk of Being Diagnosed With Cancer in 10, 20 and 30 Years, Lifetime Risk of Being Diagnosed with Cancer, and
Lifetime Risk of Dying from Cancer Given Cancer Free At Current Age
Males, 2003-2005 By Race/Ethnicity

Race/ Ethnicity	Current Age	Risk of Being Diagnosed with Cancer						Risk of Dying from Cancer	
		+10 yrs Percent (95% C.I.)	+20 yrs Percent (95% C.I.)	+30 yrs Percent (95% C.I.)	Eventually Percent (95% C.I.)	Eventually Percent (95% C.I.)			
All Races	0	0.06 (0.06, 0.07)	0.10 (0.09, 0.10)	0.13 (0.12, 0.13)	1.50 (1.47, 1.52)	0.98 (0.97, 0.99)			
	10	0.04 (0.03, 0.04)	0.06 (0.06, 0.07)	0.10 (0.10, 0.11)	1.45 (1.43, 1.48)	0.99 (0.98, 1.00)			
	20	0.03 (0.03, 0.03)	0.07 (0.06, 0.07)	0.13 (0.13, 0.14)	1.43 (1.40, 1.45)	0.99 (0.98, 1.00)			
	30	0.04 (0.03, 0.04)	0.10 (0.10, 0.11)	0.25 (0.24, 0.26)	1.42 (1.39, 1.44)	0.99 (0.98, 1.00)			
	40	0.07 (0.06, 0.07)	0.22 (0.21, 0.22)	0.52 (0.51, 0.54)	1.40 (1.38, 1.43)	0.99 (0.98, 1.00)			
	50	0.15 (0.15, 0.16)	0.47 (0.46, 0.49)	0.94 (0.92, 0.96)	1.38 (1.36, 1.41)	1.00 (0.99, 1.01)			
	60	0.35 (0.33, 0.36)	0.85 (0.83, 0.87)	1.23 (1.20, 1.26)	1.33 (1.30, 1.36)	1.01 (1.00, 1.02)			
	70	0.60 (0.58, 0.62)	1.05 (1.03, 1.08)	- (- , -)	1.17 (1.14, 1.20)	0.98 (0.96, 0.99)			
80	0.69 (0.67, 0.72)	- (- , -)	- (- , -)	0.87 (0.84, 0.91)	0.82 (0.80, 0.83)				
White	0	0.07 (0.06, 0.07)	0.11 (0.10, 0.11)	0.14 (0.13, 0.14)	1.57 (1.54, 1.60)	1.03 (1.02, 1.05)			
	10	0.04 (0.04, 0.04)	0.07 (0.06, 0.07)	0.11 (0.10, 0.11)	1.52 (1.49, 1.55)	1.04 (1.03, 1.05)			
	20	0.03 (0.03, 0.03)	0.07 (0.06, 0.07)	0.13 (0.13, 0.14)	1.49 (1.46, 1.52)	1.03 (1.02, 1.05)			
	30	0.04 (0.03, 0.04)	0.11 (0.10, 0.11)	0.25 (0.25, 0.26)	1.48 (1.45, 1.51)	1.03 (1.02, 1.05)			
	40	0.07 (0.06, 0.07)	0.22 (0.21, 0.23)	0.54 (0.53, 0.56)	1.46 (1.43, 1.49)	1.04 (1.02, 1.05)			
	50	0.16 (0.15, 0.16)	0.49 (0.48, 0.51)	0.98 (0.96, 1.00)	1.44 (1.41, 1.47)	1.05 (1.03, 1.06)			
	60	0.36 (0.35, 0.37)	0.89 (0.86, 0.91)	1.29 (1.26, 1.31)	1.39 (1.36, 1.42)	1.06 (1.04, 1.07)			
	70	0.62 (0.60, 0.64)	1.10 (1.07, 1.12)	- (- , -)	1.21 (1.18, 1.25)	1.01 (1.00, 1.03)			
80	0.72 (0.70, 0.75)	- (- , -)	- (- , -)	0.90 (0.87, 0.94)	0.84 (0.83, 0.86)				
Black	0	0.04 (0.03, 0.05)	0.06 (0.05, 0.07)	0.09 (0.08, 0.10)	0.95 (0.89, 1.02)	0.64 (0.62, 0.67)			
	10	0.02 (0.02, 0.03)	0.05 (0.04, 0.06)	0.09 (0.07, 0.10)	0.93 (0.87, 1.00)	0.65 (0.63, 0.68)			
	20	0.03 (0.02, 0.04)	0.07 (0.06, 0.08)	0.12 (0.11, 0.14)	0.92 (0.85, 0.99)	0.65 (0.62, 0.68)			
	30	0.04 (0.03, 0.05)	0.10 (0.09, 0.11)	0.22 (0.20, 0.25)	0.91 (0.85, 0.98)	0.65 (0.62, 0.68)			
	40	0.06 (0.05, 0.07)	0.19 (0.17, 0.21)	0.42 (0.39, 0.46)	0.90 (0.84, 0.98)	0.65 (0.63, 0.68)			
	50	0.14 (0.12, 0.16)	0.39 (0.35, 0.43)	0.69 (0.63, 0.75)	0.90 (0.83, 0.98)	0.66 (0.64, 0.70)			
	60	0.29 (0.25, 0.33)	0.64 (0.58, 0.70)	0.82 (0.75, 0.90)	0.88 (0.81, 0.97)	0.68 (0.65, 0.72)			
	70	0.47 (0.41, 0.53)	0.71 (0.64, 0.80)	- (- , -)	0.80 (0.71, 0.90)	0.66 (0.62, 0.70)			
80	0.45 (0.37, 0.54)	- (- , -)	- (- , -)	0.60 (0.49, 0.73)	0.55 (0.50, 0.61)				

Devcan Version 7.0.0, April 2008, National Cancer Institute (<http://srab.cancer.gov/devcan/>).

Source: Incidence data are from the SEER 17 areas (San Francisco, Connecticut, Detroit, Hawaii, Iowa, New Mexico, Seattle, Utah, Atlanta, San Jose-Monterey, Los Angeles, Alaska Native Registry, Rural Georgia, California excluding SF/SJM/LA, Kentucky, Louisiana and New Jersey). Mortality data are from the NCHS public use data file for the total US.

- Statistic could not be calculated.

A percent or confidence interval value of 0.00 represents a value that is below 0.005.

Table XIII-17 - continued

LEUKEMIA

Risk of Being Diagnosed With Cancer in 10, 20 and 30 Years, Lifetime Risk of Being Diagnosed with Cancer, and
Lifetime Risk of Dying from Cancer Given Cancer Free At Current Age
Males, 2003-2005 By Race/Ethnicity

Race/ Ethnicity	Current Age	Risk of Being Diagnosed with Cancer				Risk of Dying from Cancer	
		+10 yrs Percent (95% C.I.)	+20 yrs Percent (95% C.I.)	+30 yrs Percent (95% C.I.)	Eventually Percent (95% C.I.)	Eventually Percent (95% C.I.)	
Asian/ Pacific Islander	0	0.06 (0.05, 0.08)	0.09 (0.08, 0.11)	0.12 (0.10, 0.13)	1.02 (0.93, 1.13)	0.69 (0.62, 0.79)	
	10	0.03 (0.02, 0.04)	0.05 (0.04, 0.06)	0.09 (0.07, 0.10)	0.97 (0.87, 1.08)	0.69 (0.62, 0.79)	
	20	0.02 (0.02, 0.03)	0.06 (0.05, 0.07)	0.11 (0.10, 0.13)	0.94 (0.85, 1.05)	0.69 (0.61, 0.78)	
	30	0.03 (0.03, 0.04)	0.09 (0.08, 0.10)	0.17 (0.15, 0.19)	0.92 (0.83, 1.04)	0.68 (0.60, 0.77)	
	40	0.06 (0.05, 0.07)	0.14 (0.12, 0.16)	0.29 (0.26, 0.32)	0.90 (0.80, 1.01)	0.67 (0.60, 0.77)	
	50	0.08 (0.07, 0.10)	0.24 (0.21, 0.27)	0.53 (0.47, 0.58)	0.86 (0.76, 0.97)	0.66 (0.59, 0.76)	
	60	0.16 (0.14, 0.19)	0.46 (0.41, 0.52)	0.71 (0.64, 0.80)	0.81 (0.71, 0.92)	0.65 (0.58, 0.75)	
	70	0.33 (0.29, 0.38)	0.61 (0.54, 0.70)	- (- , -)	0.72 (0.62, 0.84)	0.61 (0.53, 0.72)	
	80	0.36 (0.30, 0.44)	- (- , -)	- (- , -)	0.50 (0.39, 0.65)	0.45 (0.36, 0.58)	
American Indian/ Alaska Native ^a	0	0.04 (0.01, 0.09)	0.06 (0.03, 0.12)	0.08 (0.04, 0.14)	0.62 (0.42, 1.27)	0.48 (0.36, 0.70)	
	10	0.02 (0.01, 0.06)	0.04 (0.02, 0.08)	0.05 (0.02, 0.09)	0.59 (0.40, 1.26)	0.47 (0.36, 0.70)	
	20	0.02 (0.00, 0.05)	0.02 (0.01, 0.06)	0.04 (0.02, 0.09)	0.57 (0.38, 1.25)	0.47 (0.35, 0.70)	
	30	0.00 (0.00, 0.03)	0.03 (0.01, 0.07)	0.12 (0.06, 0.21)	0.57 (0.37, 1.26)	0.46 (0.35, 0.70)	
	40	0.02 (0.01, 0.06)	0.12 (0.06, 0.21)	0.29 (0.18, 0.45)	0.58 (0.38, 1.30)	0.46 (0.34, 0.71)	
	50	0.10 (0.05, 0.19)	0.28 (0.17, 0.45)	0.51 (0.33, 0.78)	0.59 (0.38, 1.35)	0.47 (0.34, 0.73)	
	60	0.20 (0.10, 0.36)	0.45 (0.26, 0.72)	0.54 (0.32, 0.90)	0.54 (0.32, 1.37)	0.48 (0.34, 0.77)	
	70	0.30 (0.15, 0.57)	0.41 (0.20, 0.80)	- (- , -)	0.41 (0.20, 1.40)	0.47 (0.31, 0.83)	
	80	0.15 (0.03, 0.60)	- (- , -)	- (- , -)	0.15 (0.03, 1.65)	0.39 (0.22, 0.91)	
Hispanic ^b	0	0.07 (0.06, 0.08)	0.12 (0.11, 0.13)	0.16 (0.15, 0.17)	1.25 (1.15, 1.37)	0.72 (0.68, 0.78)	
	10	0.05 (0.04, 0.05)	0.09 (0.08, 0.09)	0.12 (0.11, 0.13)	1.19 (1.09, 1.32)	0.72 (0.68, 0.78)	
	20	0.04 (0.03, 0.04)	0.07 (0.07, 0.08)	0.13 (0.12, 0.14)	1.15 (1.05, 1.28)	0.71 (0.66, 0.76)	
	30	0.04 (0.03, 0.04)	0.09 (0.08, 0.10)	0.19 (0.17, 0.21)	1.13 (1.02, 1.25)	0.70 (0.65, 0.76)	
	40	0.06 (0.05, 0.07)	0.16 (0.14, 0.17)	0.37 (0.34, 0.40)	1.11 (1.00, 1.23)	0.70 (0.65, 0.75)	
	50	0.10 (0.09, 0.12)	0.32 (0.29, 0.36)	0.63 (0.58, 0.69)	1.08 (0.97, 1.21)	0.69 (0.64, 0.75)	
	60	0.24 (0.21, 0.27)	0.56 (0.51, 0.62)	0.87 (0.80, 0.96)	1.04 (0.93, 1.18)	0.68 (0.63, 0.74)	
	70	0.38 (0.33, 0.43)	0.73 (0.65, 0.82)	- (- , -)	0.93 (0.80, 1.08)	0.63 (0.57, 0.70)	
	80	0.50 (0.42, 0.59)	- (- , -)	- (- , -)	0.77 (0.61, 0.97)	0.52 (0.45, 0.60)	

Devcan Version 7.0.0, April 2008, National Cancer Institute (<http://srab.cancer.gov/devcan/>).

Source: Incidence data are from the SEER 17 areas (San Francisco, Connecticut, Detroit, Hawaii, Iowa, New Mexico, Seattle, Utah, Atlanta, San Jose-Monterey, Los Angeles, Alaska Native Registry, Rural Georgia, California excluding SF/SJM/LA, Kentucky, Louisiana and New Jersey). Mortality data are from the NCHS public use data file for the total US.

^a Underlying incidence and mortality data for American Indian/Alaska Native are based on the CHSDA (Contract Health Service Delivery Area) counties.

^b Hispanic is not mutually exclusive from whites, blacks, Asian/Pacific Islanders, and American Indians/Alaska Natives. Underlying incidence data for Hispanics are based on NHIA and exclude cases from the Alaska Native Registry and Kentucky. Underlying mortality data for Hispanics exclude deaths from Minnesota, New Hampshire and North Dakota.

- Statistic could not be calculated.

A percent or confidence interval value of 0.00 represents a value that is below 0.005.

Table XIII-17 - continued

LEUKEMIA

Risk of Being Diagnosed With Cancer in 10, 20 and 30 Years, Lifetime Risk of Being Diagnosed with Cancer, and
Lifetime Risk of Dying from Cancer Given Cancer Free At Current Age
Females, 2003-2005 By Race/Ethnicity

Race/ Ethnicity	Current Age	Risk of Being Diagnosed with Cancer				Risk of Dying from Cancer	
		+10 yrs Percent (95% C.I.)	+20 yrs Percent (95% C.I.)	+30 yrs Percent (95% C.I.)	Eventually Percent (95% C.I.)	Eventually Percent (95% C.I.)	
All Races	0	0.05 (0.05, 0.05)	0.07 (0.07, 0.08)	0.09 (0.09, 0.10)	1.07 (1.05, 1.09)	0.71 (0.70, 0.72)	
	10	0.02 (0.02, 0.03)	0.04 (0.04, 0.05)	0.07 (0.07, 0.07)	1.03 (1.01, 1.05)	0.71 (0.70, 0.72)	
	20	0.02 (0.02, 0.02)	0.05 (0.04, 0.05)	0.09 (0.09, 0.10)	1.01 (0.99, 1.03)	0.70 (0.70, 0.71)	
	30	0.03 (0.03, 0.03)	0.08 (0.07, 0.08)	0.17 (0.16, 0.18)	0.99 (0.97, 1.01)	0.70 (0.69, 0.71)	
	40	0.05 (0.05, 0.05)	0.14 (0.14, 0.15)	0.33 (0.32, 0.34)	0.97 (0.95, 0.99)	0.69 (0.69, 0.70)	
	50	0.10 (0.09, 0.10)	0.29 (0.28, 0.30)	0.59 (0.57, 0.60)	0.94 (0.92, 0.97)	0.69 (0.68, 0.70)	
	60	0.20 (0.19, 0.21)	0.51 (0.50, 0.53)	0.79 (0.77, 0.81)	0.89 (0.87, 0.91)	0.68 (0.67, 0.69)	
	70	0.35 (0.34, 0.36)	0.66 (0.64, 0.68)	- (- , -)	0.77 (0.75, 0.79)	0.64 (0.63, 0.65)	
80	0.41 (0.40, 0.43)	- (- , -)	- (- , -)	0.56 (0.54, 0.58)	0.54 (0.53, 0.55)		
White	0	0.05 (0.05, 0.06)	0.08 (0.07, 0.08)	0.10 (0.09, 0.10)	1.11 (1.08, 1.13)	0.73 (0.73, 0.74)	
	10	0.02 (0.02, 0.03)	0.05 (0.04, 0.05)	0.07 (0.07, 0.08)	1.06 (1.04, 1.09)	0.74 (0.73, 0.74)	
	20	0.02 (0.02, 0.02)	0.05 (0.04, 0.05)	0.10 (0.09, 0.10)	1.04 (1.02, 1.06)	0.73 (0.72, 0.74)	
	30	0.03 (0.03, 0.03)	0.08 (0.07, 0.08)	0.17 (0.17, 0.18)	1.03 (1.00, 1.05)	0.72 (0.72, 0.73)	
	40	0.05 (0.05, 0.05)	0.15 (0.14, 0.15)	0.35 (0.33, 0.36)	1.01 (0.98, 1.03)	0.72 (0.71, 0.73)	
	50	0.10 (0.10, 0.11)	0.30 (0.29, 0.31)	0.61 (0.59, 0.63)	0.98 (0.95, 1.00)	0.71 (0.70, 0.72)	
	60	0.21 (0.20, 0.22)	0.53 (0.52, 0.55)	0.82 (0.80, 0.84)	0.92 (0.89, 0.94)	0.70 (0.69, 0.71)	
	70	0.36 (0.35, 0.37)	0.68 (0.66, 0.70)	- (- , -)	0.79 (0.77, 0.81)	0.66 (0.65, 0.67)	
80	0.43 (0.41, 0.44)	- (- , -)	- (- , -)	0.57 (0.55, 0.59)	0.55 (0.54, 0.56)		
Black	0	0.03 (0.02, 0.04)	0.05 (0.04, 0.06)	0.06 (0.05, 0.07)	0.76 (0.70, 0.82)	0.55 (0.52, 0.57)	
	10	0.02 (0.01, 0.02)	0.03 (0.03, 0.04)	0.06 (0.05, 0.07)	0.75 (0.69, 0.81)	0.56 (0.53, 0.58)	
	20	0.02 (0.01, 0.02)	0.04 (0.03, 0.05)	0.09 (0.07, 0.10)	0.73 (0.68, 0.79)	0.55 (0.53, 0.57)	
	30	0.03 (0.02, 0.03)	0.07 (0.06, 0.08)	0.15 (0.14, 0.17)	0.72 (0.67, 0.78)	0.55 (0.52, 0.57)	
	40	0.05 (0.04, 0.05)	0.13 (0.12, 0.15)	0.28 (0.25, 0.31)	0.71 (0.65, 0.77)	0.54 (0.52, 0.57)	
	50	0.09 (0.08, 0.10)	0.24 (0.22, 0.27)	0.45 (0.41, 0.50)	0.69 (0.63, 0.75)	0.54 (0.52, 0.56)	
	60	0.17 (0.15, 0.20)	0.40 (0.36, 0.44)	0.58 (0.53, 0.64)	0.66 (0.60, 0.72)	0.53 (0.51, 0.56)	
	70	0.27 (0.24, 0.31)	0.49 (0.44, 0.55)	- (- , -)	0.58 (0.52, 0.65)	0.50 (0.48, 0.53)	
80	0.32 (0.27, 0.38)	- (- , -)	- (- , -)	0.46 (0.39, 0.54)	0.43 (0.40, 0.46)		

Devcan Version 7.0.0, April 2008, National Cancer Institute (<http://srab.cancer.gov/devcan/>).

Source: Incidence data are from the SEER 17 areas (San Francisco, Connecticut, Detroit, Hawaii, Iowa, New Mexico, Seattle, Utah, Atlanta, San Jose-Monterey, Los Angeles, Alaska Native Registry, Rural Georgia, California excluding SF/SJM/LA, Kentucky, Louisiana and New Jersey). Mortality data are from the NCHS public use data file for the total US.

- Statistic could not be calculated.

A percent or confidence interval value of 0.00 represents a value that is below 0.005.

Table XIII-17 - continued

LEUKEMIA

Risk of Being Diagnosed With Cancer in 10, 20 and 30 Years, Lifetime Risk of Being Diagnosed with Cancer, and
Lifetime Risk of Dying from Cancer Given Cancer Free At Current Age
Females, 2003-2005 By Race/Ethnicity

Race/ Ethnicity	Current Age	Risk of Being Diagnosed with Cancer				Risk of Dying from Cancer	
		+10 yrs Percent (95% C.I.)	+20 yrs Percent (95% C.I.)	+30 yrs Percent (95% C.I.)	Eventually Percent (95% C.I.)	Eventually Percent (95% C.I.)	
Asian/ Pacific Islander	0	0.05 (0.04, 0.07)	0.07 (0.06, 0.09)	0.09 (0.07, 0.10)	0.76 (0.68, 0.86)	0.46 (0.40, 0.54)	
	10	0.02 (0.01, 0.03)	0.03 (0.03, 0.04)	0.06 (0.05, 0.07)	0.71 (0.63, 0.81)	0.45 (0.39, 0.53)	
	20	0.01 (0.01, 0.02)	0.04 (0.03, 0.05)	0.08 (0.07, 0.09)	0.69 (0.61, 0.80)	0.45 (0.39, 0.53)	
	30	0.02 (0.02, 0.03)	0.06 (0.05, 0.08)	0.12 (0.11, 0.14)	0.68 (0.60, 0.78)	0.44 (0.38, 0.53)	
	40	0.04 (0.03, 0.05)	0.10 (0.09, 0.12)	0.20 (0.18, 0.23)	0.66 (0.58, 0.76)	0.44 (0.38, 0.52)	
	50	0.06 (0.05, 0.08)	0.17 (0.14, 0.19)	0.34 (0.30, 0.39)	0.63 (0.54, 0.73)	0.43 (0.37, 0.51)	
	60	0.11 (0.09, 0.13)	0.29 (0.25, 0.33)	0.48 (0.42, 0.54)	0.58 (0.50, 0.69)	0.41 (0.35, 0.50)	
	70	0.19 (0.16, 0.23)	0.39 (0.34, 0.45)	- (- , -)	0.50 (0.42, 0.61)	0.37 (0.31, 0.46)	
80	0.24 (0.19, 0.29)	- (- , -)	- (- , -)	0.37 (0.28, 0.49)	0.29 (0.22, 0.39)		
American Indian/ Alaska Native ^a	0	0.04 (0.02, 0.10)	0.06 (0.03, 0.12)	0.09 (0.05, 0.16)	0.87 (0.53, 1.54)	0.52 (0.40, 0.72)	
	10	0.02 (0.01, 0.04)	0.05 (0.02, 0.10)	0.08 (0.04, 0.13)	0.84 (0.50, 1.53)	0.52 (0.40, 0.73)	
	20	0.03 (0.01, 0.07)	0.06 (0.03, 0.11)	0.10 (0.06, 0.17)	0.83 (0.48, 1.52)	0.52 (0.39, 0.72)	
	30	0.03 (0.01, 0.07)	0.07 (0.03, 0.13)	0.13 (0.07, 0.21)	0.80 (0.46, 1.50)	0.51 (0.39, 0.72)	
	40	0.04 (0.02, 0.09)	0.10 (0.05, 0.18)	0.22 (0.13, 0.36)	0.79 (0.44, 1.50)	0.51 (0.39, 0.72)	
	50	0.06 (0.02, 0.13)	0.18 (0.09, 0.32)	0.34 (0.20, 0.56)	0.77 (0.41, 1.50)	0.52 (0.39, 0.74)	
	60	0.13 (0.05, 0.25)	0.30 (0.16, 0.51)	0.48 (0.27, 0.79)	0.75 (0.38, 1.53)	0.51 (0.38, 0.75)	
	70	0.20 (0.08, 0.40)	0.40 (0.20, 0.73)	- (- , -)	0.71 (0.32, 1.60)	0.51 (0.36, 0.78)	
80	0.27 (0.09, 0.64)	- (- , -)	- (- , -)	0.69 (0.22, 1.87)	0.47 (0.30, 0.81)		
Hispanic ^b	0	0.06 (0.05, 0.07)	0.09 (0.08, 0.10)	0.11 (0.10, 0.12)	1.00 (0.91, 1.09)	0.56 (0.52, 0.60)	
	10	0.03 (0.03, 0.04)	0.05 (0.05, 0.06)	0.08 (0.07, 0.09)	0.95 (0.86, 1.04)	0.55 (0.51, 0.60)	
	20	0.02 (0.02, 0.03)	0.05 (0.04, 0.06)	0.09 (0.08, 0.10)	0.92 (0.83, 1.01)	0.54 (0.51, 0.59)	
	30	0.03 (0.02, 0.03)	0.07 (0.07, 0.08)	0.16 (0.15, 0.18)	0.90 (0.81, 1.00)	0.54 (0.50, 0.58)	
	40	0.04 (0.04, 0.05)	0.13 (0.12, 0.15)	0.30 (0.27, 0.33)	0.87 (0.79, 0.97)	0.53 (0.49, 0.57)	
	50	0.09 (0.08, 0.10)	0.26 (0.23, 0.28)	0.48 (0.44, 0.53)	0.84 (0.76, 0.94)	0.51 (0.47, 0.56)	
	60	0.17 (0.15, 0.20)	0.41 (0.37, 0.45)	0.62 (0.56, 0.68)	0.78 (0.69, 0.88)	0.49 (0.45, 0.54)	
	70	0.26 (0.22, 0.29)	0.49 (0.43, 0.55)	- (- , -)	0.66 (0.57, 0.77)	0.45 (0.41, 0.50)	
80	0.29 (0.24, 0.35)	- (- , -)	- (- , -)	0.51 (0.41, 0.63)	0.36 (0.32, 0.42)		

Devcan Version 7.0.0, April 2008, National Cancer Institute (<http://srab.cancer.gov/devcan/>).

Source: Incidence data are from the SEER 17 areas (San Francisco, Connecticut, Detroit, Hawaii, Iowa, New Mexico, Seattle, Utah, Atlanta, San Jose-Monterey, Los Angeles, Alaska Native Registry, Rural Georgia, California excluding SF/SJM/LA, Kentucky, Louisiana and New Jersey). Mortality data are from the NCHS public use data file for the total US.

^a Underlying incidence and mortality data for American Indian/Alaska Native are based on the CHSDA (Contract Health Service Delivery Area) counties.

^b Hispanic is not mutually exclusive from whites, blacks, Asian/Pacific Islanders, and American Indians/Alaska Natives. Underlying incidence data for Hispanics are based on NHIA and exclude cases from the Alaska Native Registry and Kentucky. Underlying mortality data for Hispanics exclude deaths from Minnesota, New Hampshire and North Dakota.

- Statistic could not be calculated.

A percent or confidence interval value of 0.00 represents a value that is below 0.005.

Table XIII-18

LEUKEMIA

SEER INCIDENCE AND U.S. MORTALITY
AGE-ADJUSTED RATES AND TRENDS^a
 By Race/Ethnicity and Sex

<u>SEER Incidence</u>	Rate 2001-2005 ^b			Seer 13 Areas ^c Trend 1996-2005 AAPC (%)			SEER 9 Areas ^d Trend 1996-2005 AAPC (%)		
	Rate per 100,000 persons			Total	Males	Females	Total	Males	Females
	Total	Males	Females	Total	Males	Females	Total	Males	Females
RACE/ETHNICITY									
All Races	12.3	16.0	9.5	-0.6*	-0.7*	-0.5*	-0.8*	-1.0*	0.0
White	12.9	16.7	9.9	-0.5*	-0.7*	-0.4	-0.8*	-1.0	0.1
White Hispanic ^e	9.9	12.0	8.2	-0.5	-0.3	-0.7	-	-	-
White Non-Hispanic ^e	13.1	17.2	10.0	-0.4	-0.7*	-0.2	-	-	-
Black	10.1	13.0	8.0	-0.4	-0.6	-0.2	-0.5*	-0.6*	-0.3
Asian/Pacific Islander	7.3	9.1	5.9	-1.0*	-0.6	-1.2*	-	-	-
Amer Ind/Alaska Nat ^f	7.5	7.9	6.9	2.6	-	-	-	-	-
Hispanic ^e	9.6	11.7	8.0	-0.3	-0.2	-0.4	-	-	-
<u>U.S. Mortality^g</u>									
	Rate 2001-2005			Trend 1996-2005 ^h					
	Rate per 100,000 persons			AAPC (%)					
	Total	Males	Females	Total	Males	Females			
RACE/ETHNICITY									
All Races	7.4	9.9	5.6	-0.9*	-0.8*	-1.2*			
White	7.6	10.2	5.7	-0.6*	-0.7*	-1.1*			
White Hispanic ^e	5.2	6.6	4.2	-1.2*	-0.4	-1.1*			
White Non-Hispanic ^e	7.7	10.4	5.8	-0.8*	-0.7*	-1.1*			
Black	6.5	8.5	5.2	-1.1*	-1.3*	-1.0*			
Asian/Pacific Islander	3.9	5.1	3.0	-1.6*	-1.2*	-2.0*			
Amer Ind/Alaska Nat									
Total U.S.	3.9	4.5	3.3	-1.3	-2.5	-0.7			
CHSDA Counties	4.9	5.7	4.1	0.0	-1.1	-			
Non-CHSDA Counties	2.6	2.9	2.3	-2.9	-	-			
Hispanic ^e	5.0	6.3	4.0	-1.2*	-0.5	-1.0*			

The AAPC is the Average Annual Percent Change over the time interval. The AAPCs are calculated by the Joinpoint Regression Program Version 3.3, April 2008, National Cancer Institute.

Statistic not shown. Rate based on less than 16 cases for the time interval. Trend based on less than 10 cases for at least one year within the time interval.

Rates are age-adjusted to the 2000 US Std Population (19 age groups - Census P25-1130). Trends are based on rates age-adjusted to the 2000 US Std Population (19 age groups - Census P25-1130).

Incidence data used in calculating the 2001-2005 rates are from the SEER 17 areas (San Francisco, Connecticut, Detroit, Hawaii, Iowa, New Mexico, Seattle, Utah, Atlanta, San Jose-Monterey, Los Angeles, Alaska Native Registry, Rural Georgia, California excluding SF/SJM/LA, Kentucky, Louisiana and New Jersey).

The SEER 13 areas are San Francisco, Connecticut, Detroit, Hawaii, Iowa, New Mexico, Seattle, Utah, Atlanta, San Jose-Monterey, Los Angeles, Alaska Native Registry and Rural Georgia. The 1996-2005 AAPC trends are based on a Joinpoint analysis using diagnosis years 1992-2005.

The SEER 9 areas are San Francisco, Connecticut, Detroit, Hawaii, Iowa, New Mexico, Seattle, Utah, and Atlanta. The 1996-2005 AAPC trends are based on a Joinpoint analysis using diagnosis years 1975-2005.

Hispanic and Non-Hispanic are not mutually exclusive from whites, blacks, Asian/Pacific Islanders, and American Indians/Alaska Natives. Incidence data for Hispanics and Non-Hispanics are based on NHIA and exclude cases from the Alaska Native Registry and Kentucky. The 2001-2005 Hispanic and Non-Hispanic death rates exclude deaths from Minnesota, New Hampshire and North Dakota. The 1996-2005 Hispanic and Non-Hispanic mortality trends exclude deaths from Connecticut, Maine, Maryland, Minnesota, New Hampshire, New York, North Dakota, Oklahoma and Vermont.

Incidence data for American Indian/Alaska Native are based on the CHSDA(Contract Health Service Delivery Area) counties.

US Mortality Files, National Center for Health Statistics, CDC.

The 1996-2005 mortality AAPCs are based on a Joinpoint analysis using years of death 1992-2005.

The APC is significantly different from zero (p<.05).

Table XIII-19

LEUKEMIAAGE-ADJUSTED SEER INCIDENCE RATES^a

By Registry, Race and Sex

	<u>All Races</u>			<u>Whites</u>			<u>Blacks</u>		
	<u>Total</u>	<u>Males</u>	<u>Females</u>	<u>Total</u>	<u>Males</u>	<u>Females</u>	<u>Total</u>	<u>Males</u>	<u>Females</u>
<u>SEER INCIDENCE RATES^a, 2001-2005</u>									
<u>REGISTRY</u>									
Atlanta & Rural Georgia	11.6	16.1	8.6	12.8	17.6	9.4	9.7	13.7	7.3
Atlanta	11.7	16.3	8.6	12.9	17.7	9.4	9.8	14.0	7.2
Rural Georgia	10.3	13.3	8.7	11.4	16.1	8.2	8.9	-	-
California	11.5	14.8	8.9	12.0	15.4	9.3	10.0	12.9	7.7
Greater Bay Area	10.7	14.0	8.2	11.6	15.1	8.9	9.0	10.9	7.7
San Francisco-Oakland	10.6	13.5	8.3	11.6	14.7	9.1	9.3	11.5	8.0
San Jose-Monterey	11.1	14.8	8.1	11.7	15.8	8.6	6.1	-	-
Los Angeles	11.4	14.6	8.9	12.2	15.6	9.5	10.2	13.3	7.8
Greater California	11.8	15.2	9.2	12.0	15.5	9.4	10.4	13.8	7.6
Connecticut	11.6	15.0	9.1	12.0	15.4	9.4	8.2	10.0	7.1
Detroit	14.2	18.1	11.4	14.9	19.1	11.9	11.4	13.9	9.5
Hawaii	10.2	12.7	8.1	12.9	17.4	8.7	-	-	-
Iowa	14.8	19.7	11.2	14.7	19.6	11.0	12.5	-	-
Kentucky	12.9	16.7	10.1	12.8	16.7	10.0	10.7	13.3	8.8
Louisiana	12.2	16.2	9.3	13.0	17.4	9.8	10.2	13.4	7.9
New Jersey	13.0	17.2	9.9	13.4	17.7	10.0	9.8	13.4	7.5
New Mexico	13.4	17.4	10.0	14.0	18.4	10.2	10.5	-	-
Seattle-Puget Sound	14.2	18.5	10.8	14.7	19.1	11.2	10.2	13.2	7.9
Utah	12.6	16.2	9.7	12.7	16.4	9.8	-	-	-
9 SEER Areas ^b	12.7	16.5	9.8	13.5	17.6	10.3	10.1	12.6	8.4
11 SEER Areas ^b	12.3	16.0	9.5	13.1	17.1	10.1	10.0	12.7	8.2
13 SEER Areas ^b	12.3	16.0	9.5	13.1	17.1	10.1	10.0	12.6	8.2
17 SEER Areas ^b	12.3	16.0	9.5	12.9	16.7	9.9	10.1	13.0	8.0

^a Rates are per 100,000 and are age-adjusted to the 2000 US Std Population (19 age groups - Census P25-1130)

^b The SEER 9 areas are San Francisco, Connecticut, Detroit, Hawaii, Iowa, New Mexico, Seattle, Utah and Atlanta.

The SEER 11 areas comprise the SEER 9 areas plus San Jose-Monterey and Los Angeles.

The SEER 13 areas comprise the SEER 11 areas plus the Alaska Native Registry and Rural Georgia.

The SEER 17 areas comprise the SEER 13 areas plus California excluding SF/SJM/LA, Kentucky, Louisiana and New Jersey.

- Statistic not shown. Rate based on less than 16 cases for the time interval.

Table XIII-20

LEUKEMIAAGE-ADJUSTED SEER DEATH RATES^a

By Registry, Race and Sex

	<u>All Races</u>			<u>Whites</u>			<u>Blacks</u>		
	<u>Total</u>	<u>Males</u>	<u>Females</u>	<u>Total</u>	<u>Males</u>	<u>Females</u>	<u>Total</u>	<u>Males</u>	<u>Females</u>
<u>SEER DEATH RATES^a, 2001-2005</u>									
REGISTRY									
Atlanta & Rural Georgia	6.8	9.2	5.3	7.2	9.6	5.5	6.4	8.8	5.1
Atlanta	6.9	9.2	5.4	7.2	9.6	5.5	6.7	9.1	5.3
Rural Georgia	6.5	9.2	4.7	7.7	10.8	-	-	-	-
California	6.9	9.1	5.3	7.3	9.6	5.6	6.9	9.2	5.3
Greater Bay Area	6.3	8.4	4.8	7.0	9.3	5.2	6.4	8.2	5.3
San Francisco-Oakland	6.2	8.3	4.7	6.9	9.1	5.3	6.2	8.1	5.1
San Jose-Monterey	6.5	8.7	4.9	7.1	9.6	5.2	7.8	-	-
Los Angeles	6.5	8.5	5.1	7.0	9.1	5.4	7.1	9.2	5.6
Greater California	7.2	9.6	5.5	7.5	9.9	5.7	7.1	9.8	4.9
Connecticut	7.1	9.4	5.6	7.2	9.6	5.7	5.8	7.2	5.3
Detroit	7.9	10.6	6.1	8.2	11.2	6.2	6.8	8.4	5.7
Hawaii	5.5	7.1	4.1	7.5	9.3	6.0	-	-	-
Iowa	8.4	11.6	6.1	8.4	11.6	6.1	10.8	-	-
Kentucky	7.8	10.5	5.9	7.8	10.6	5.9	6.7	9.8	5.0
Louisiana	7.5	10.1	5.7	7.5	10.0	5.7	7.5	10.5	5.5
New Jersey	7.3	9.6	5.7	7.6	10.0	5.9	6.0	8.2	4.5
New Mexico	6.5	8.6	4.9	6.7	8.9	5.0	-	-	-
Seattle-Puget Sound	7.7	10.4	5.7	8.0	10.7	6.0	6.5	9.4	-
Utah	7.3	9.9	5.3	7.3	9.9	5.3	-	-	-
9 SEER Areas ^b	7.2	9.7	5.5	7.6	10.2	5.7	6.5	8.3	5.3
11 SEER Areas ^b	7.0	9.4	5.3	7.5	10.0	5.7	6.7	8.5	5.4
13 SEER Areas ^b	7.0	9.3	5.3	7.4	10.0	5.6	6.6	8.5	5.4
17 SEER Areas ^b	7.2	9.6	5.5	7.5	10.0	5.7	6.7	9.0	5.2
Total U.S.	7.4	9.9	5.6	7.6	10.2	5.7	6.5	8.5	5.2

^a US Mortality Files, National Center for Health Statistics, Centers for Disease Control and Prevention. Rates are per 100,000 and are age-adjusted to the 2000 US Std Population (19 age groups - Census P25-1130).

^b The SEER 9 areas are San Francisco, Connecticut, Detroit, Hawaii, Iowa, New Mexico, Seattle, Utah and Atlanta.

The SEER 11 areas comprise the SEER 9 areas plus San Jose-Monterey and Los Angeles.

The SEER 13 areas comprise the SEER 11 areas plus the Alaska Native Registry and Rural Georgia.

The SEER 17 areas comprise the SEER 13 areas plus California excluding SF/SJM/LA, Kentucky, Louisiana and New Jersey.

- Statistic not shown. Rate based on less than 16 cases for the time interval.

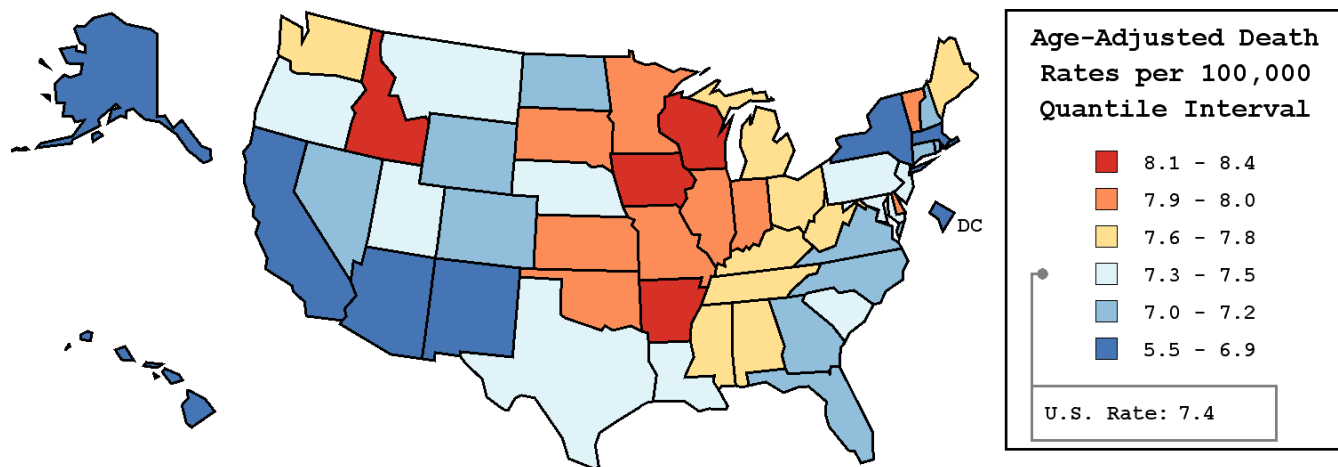
Table XIII-21
LEUKEMIA

AVERAGE ANNUAL AGE-ADJUSTED CANCER DEATH^a RATES BY STATE, ALL RACES, 2001-2005

Males and Females

State	Rate	SE	Rank	PD
TOTAL U.S.	7.4	0.02		
High Five States				
Wisconsin	8.4 ^b	0.17	(01)	13.5
Iowa	8.4 ^b	0.22	(02)	13.5
Idaho	8.3	0.36	(03)	12.2
Arkansas	8.1	0.23	(04)	9.5
Delaware	8.0	0.44	(05)	8.1
Low Five States				
Arizona	6.6 ^b	0.15	(47)	-10.8
New Mexico	6.5	0.27	(48)	-12.2
Alaska	6.4	0.63	(49)	-13.5
D.C.	6.4	0.47	(50)	-13.5
Hawaii	5.5 ^b	0.29	(51)	-25.7 ^c

State	Rate	SE	Rank	PD	State	Rate	SE	Rank	PD
Alabama	7.6	0.18	(21)	2.7	Montana	7.5	0.39	(24)	1.4
Alaska	6.4	0.63	(49)	-13.5	Nebraska	7.5	0.28	(25)	1.4
Arizona	6.6 ^b	0.15	(47)	-10.8	Nevada	7.2	0.27	(33)	-2.7
Arkansas	8.1	0.23	(04)	9.5	New Hampshire	7.0	0.33	(40)	-5.4
California	6.9 ^b	0.07	(46)	-6.8	New Jersey	7.3	0.13	(30)	-1.4
Colorado	7.0	0.19	(42)	-5.4	New Mexico	6.5	0.27	(48)	-12.2
Connecticut	7.1	0.19	(37)	-4.1	New York	6.9 ^b	0.08	(44)	-6.8
Delaware	8.0	0.44	(05)	8.1	North Carolina	7.1	0.13	(38)	-4.1
D.C.	6.4	0.47	(50)	-13.5	North Dakota	7.0	0.43	(39)	-5.4
Florida	7.2	0.08	(36)	-2.7	Ohio	7.7	0.11	(18)	4.1
Georgia	7.2	0.14	(34)	-2.7	Oklahoma	7.9	0.21	(13)	6.8
Hawaii	5.5 ^b	0.29	(51)	-25.7 ^c	Oregon	7.4	0.20	(27)	0.0
Idaho	8.3	0.36	(03)	12.2	Pennsylvania	7.5	0.10	(23)	1.4
Illinois	7.9 ^b	0.11	(10)	6.8	Rhode Island	7.0	0.34	(41)	-5.4
Indiana	7.9	0.16	(11)	6.8	South Carolina	7.3	0.19	(31)	-1.4
Iowa	8.4 ^b	0.22	(02)	13.5	South Dakota	8.0	0.43	(07)	8.1
Kansas	7.9	0.23	(12)	6.8	Tennessee	7.7	0.16	(20)	4.1
Kentucky	7.8	0.19	(16)	5.4	Texas	7.4	0.09	(28)	0.0
Louisiana	7.5	0.19	(26)	1.4	Utah	7.3	0.29	(29)	-1.4
Maine	7.8	0.32	(15)	5.4	Vermont	8.0	0.50	(06)	8.1
Maryland	7.3	0.17	(32)	-1.4	Virginia	7.2	0.14	(35)	-2.7
Massachusetts	6.9	0.14	(45)	-6.8	Washington	7.7	0.16	(19)	4.1
Michigan	7.8 ^b	0.12	(14)	5.4	West Virginia	7.6	0.27	(22)	2.7
Minnesota	8.0	0.18	(09)	8.1	Wisconsin	8.4 ^b	0.17	(01)	13.5
Mississippi	7.8	0.24	(17)	5.4	Wyoming	7.0	0.53	(43)	-5.4
Missouri	8.0 ^b	0.16	(08)	8.1					



^a US Mortality Files, National Center for Health Statistics, Centers for Disease Control and Prevention. Rates are per 100,000 and are age-adjusted to the 2000 US Std Population (19 age groups - Census P25-1130).
^b Difference between state rate and total U.S. rate is statistically significant ($p \leq .0002$).
^c Absolute percent difference between state rate and total U.S. rate is 15% or more.
SE Standard error of the rate.
PD Percent difference between state rate and total U.S. rate.

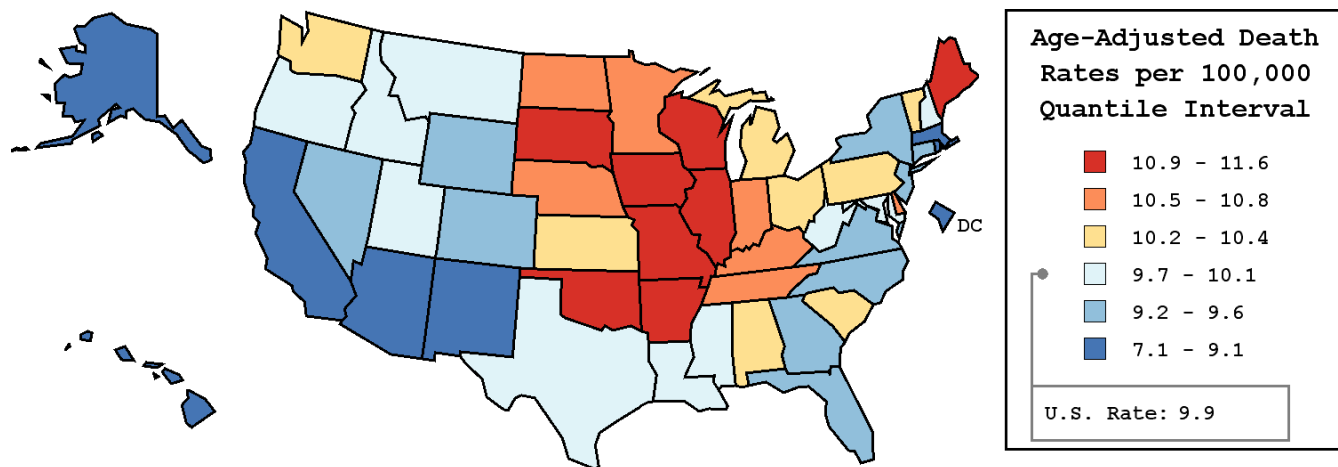
Table XIII-22
LEUKEMIA

AVERAGE ANNUAL AGE-ADJUSTED CANCER DEATH^a RATES BY STATE, ALL RACES, 2001-2005

Males

State	Rate	SE	Rank	PD
TOTAL U.S.	9.9	0.04		
High Five States				
Iowa	11.6 ^b	0.40	(01)	17.2 ^c
Maine	11.1	0.61	(02)	12.1
Wisconsin	11.1 ^b	0.30	(03)	12.1
Arkansas	11.0	0.43	(04)	11.1
South Dakota	11.0	0.77	(05)	11.1
Low Five States				
New Mexico	8.6	0.47	(47)	-13.1
Arizona	8.6 ^b	0.26	(48)	-13.1
Alaska	8.4	1.14	(49)	-15.2 ^c
D.C.	8.2	0.87	(50)	-17.2 ^c
Hawaii	7.1 ^b	0.48	(51)	-28.3 ^c

State	Rate	SE	Rank	PD	State	Rate	SE	Rank	PD
Alabama	10.3	0.34	(20)	4.0	Montana	10.1	0.69	(24)	2.0
Alaska	8.4	1.14	(49)	-15.2 ^c	Nebraska	10.5	0.52	(13)	6.1
Arizona	8.6 ^b	0.26	(48)	-13.1	Nevada	9.5	0.47	(38)	-4.0
Arkansas	11.0	0.43	(04)	11.1	New Hampshire	10.1	0.63	(25)	2.0
California	9.1 ^b	0.12	(45)	-8.1	New Jersey	9.6	0.23	(34)	-3.0
Colorado	9.4	0.36	(40)	-5.1	New Mexico	8.6	0.47	(47)	-13.1
Connecticut	9.4	0.35	(41)	-5.1	New York	9.3 ^b	0.15	(43)	-6.1
Delaware	10.5	0.79	(15)	6.1	North Carolina	9.6	0.25	(36)	-3.0
D.C.	8.2	0.87	(50)	-17.2 ^c	North Dakota	10.6	0.82	(11)	7.1
Florida	9.6	0.14	(35)	-3.0	Ohio	10.4	0.21	(16)	5.1
Georgia	9.6	0.27	(37)	-3.0	Oklahoma	10.9	0.38	(08)	10.1
Hawaii	7.1 ^b	0.48	(51)	-28.3 ^c	Oregon	9.9	0.35	(32)	0.0
Idaho	10.0	0.60	(28)	1.0	Pennsylvania	10.3	0.19	(22)	4.0
Illinois	11.0 ^b	0.21	(06)	11.1	Rhode Island	8.8	0.60	(46)	-11.1
Indiana	10.8	0.30	(10)	9.1	South Carolina	10.2	0.36	(23)	3.0
Iowa	11.6 ^b	0.40	(01)	17.2 ^c	South Dakota	11.0	0.77	(05)	11.1
Kansas	10.4	0.42	(17)	5.1	Tennessee	10.5	0.30	(14)	6.1
Kentucky	10.5	0.36	(12)	6.1	Texas	10.0	0.17	(29)	1.0
Louisiana	10.1	0.35	(27)	2.0	Utah	9.9	0.52	(30)	0.0
Maine	11.1	0.61	(02)	12.1	Vermont	10.3	0.89	(21)	4.0
Maryland	9.9	0.31	(31)	0.0	Virginia	9.5	0.27	(39)	-4.0
Massachusetts	9.1	0.26	(44)	-8.1	Washington	10.4	0.29	(19)	5.1
Michigan	10.4	0.23	(18)	5.1	West Virginia	10.1	0.48	(26)	2.0
Minnesota	10.8	0.32	(09)	9.1	Wisconsin	11.1 ^b	0.30	(03)	12.1
Mississippi	9.8	0.42	(33)	-1.0	Wyoming	9.3	0.96	(42)	-6.1
Missouri	10.9	0.30	(07)	10.1					



^a US Mortality Files, National Center for Health Statistics, Centers for Disease Control and Prevention. Rates are per 100,000 and are age-adjusted to the 2000 US Std Population (19 age groups - Census P25-1130).
^b Difference between state rate and total U.S. rate is statistically significant ($p \leq .0002$).
^c Absolute percent difference between state rate and total U.S. rate is 15% or more.
SE Standard error of the rate.
PD Percent difference between state rate and total U.S. rate.

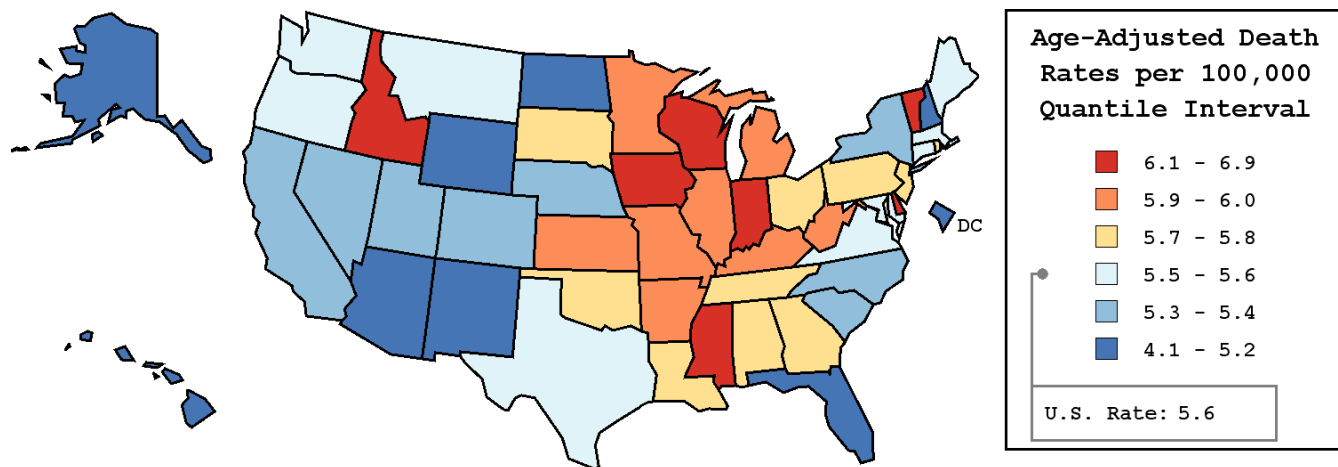
Table XIII-23
LEUKEMIA

AVERAGE ANNUAL AGE-ADJUSTED CANCER DEATH^a RATES BY STATE, ALL RACES, 2001-2005

Females

State	Rate	SE	Rank	PD
TOTAL U.S.	5.6	0.03		
High Five States				
Idaho	6.9	0.44	(01)	23.2 ^c
Delaware	6.5	0.52	(02)	16.1 ^c
Vermont	6.4	0.59	(03)	14.3
Mississippi	6.4	0.28	(04)	14.3
Wisconsin	6.4 ^b	0.20	(05)	14.3
Low Five States				
New Mexico	4.9	0.31	(47)	-12.5
Alaska	4.9	0.73	(48)	-12.5
New Hampshire	4.9	0.37	(49)	-12.5
North Dakota	4.6	0.47	(50)	-17.9 ^c
Hawaii	4.1 ^b	0.34	(51)	-26.8 ^c

State	Rate	SE	Rank	PD	State	Rate	SE	Rank	PD
Alabama	5.8	0.21	(18)	3.6	Montana	5.6	0.45	(29)	0.0
Alaska	4.9	0.73	(48)	-12.5	Nebraska	5.4	0.32	(36)	-3.6
Arizona	4.9 ^b	0.18	(46)	-12.5	Nevada	5.3	0.32	(40)	-5.4
Arkansas	6.0	0.27	(08)	7.1	New Hampshire	4.9	0.37	(49)	-12.5
California	5.3 ^b	0.08	(42)	-5.4	New Jersey	5.7	0.15	(24)	1.8
Colorado	5.3	0.22	(38)	-5.4	New Mexico	4.9	0.31	(47)	-12.5
Connecticut	5.6	0.23	(27)	0.0	New York	5.3	0.10	(39)	-5.4
Delaware	6.5	0.52	(02)	16.1 ^c	North Carolina	5.4	0.15	(35)	-3.6
D.C.	5.1	0.54	(45)	-8.9	North Dakota	4.6	0.47	(50)	-17.9 ^c
Florida	5.2 ^b	0.10	(43)	-7.1	Ohio	5.8	0.13	(16)	3.6
Georgia	5.7	0.17	(21)	1.8	Oklahoma	5.8	0.24	(19)	3.6
Hawaii	4.1 ^b	0.34	(51)	-26.8 ^c	Oregon	5.6	0.23	(28)	0.0
Idaho	6.9	0.44	(01)	23.2 ^c	Pennsylvania	5.7	0.12	(25)	1.8
Illinois	6.0	0.13	(13)	7.1	Rhode Island	5.7	0.41	(20)	1.8
Indiana	6.1	0.18	(07)	8.9	South Carolina	5.4	0.21	(37)	-3.6
Iowa	6.1	0.25	(06)	8.9	South Dakota	5.7	0.49	(23)	1.8
Kansas	6.0	0.27	(10)	7.1	Tennessee	5.8	0.19	(17)	3.6
Kentucky	5.9	0.22	(14)	5.4	Texas	5.6	0.10	(30)	0.0
Louisiana	5.7	0.21	(22)	1.8	Utah	5.3	0.33	(41)	-5.4
Maine	5.6	0.36	(32)	0.0	Vermont	6.4	0.59	(03)	14.3
Maryland	5.5	0.19	(33)	-1.8	Virginia	5.6	0.17	(31)	0.0
Massachusetts	5.5	0.17	(34)	-1.8	Washington	5.6	0.19	(26)	0.0
Michigan	6.0	0.14	(11)	7.1	West Virginia	5.9	0.31	(15)	5.4
Minnesota	6.0	0.21	(09)	7.1	Wisconsin	6.4 ^b	0.20	(05)	14.3
Mississippi	6.4	0.28	(04)	14.3	Wyoming	5.2	0.61	(44)	-7.1
Missouri	6.0	0.18	(12)	7.1					



^a US Mortality Files, National Center for Health Statistics, Centers for Disease Control and Prevention. Rates are per 100,000 and are age-adjusted to the 2000 US Std Population (19 age groups - Census P25-1130).
^b Difference between state rate and total U.S. rate is statistically significant ($p \leq .0002$).
^c Absolute percent difference between state rate and total U.S. rate is 15% or more.
SE Standard error of the rate.
PD Percent difference between state rate and total U.S. rate.

Table XIII-24
LEUKEMIA (Invasive)Estimated United States Cancer Prevalence Counts^a on January 1, 2005
By Race/Ethnicity, Sex and Years Since Diagnosis

Years Since Diagnosis	0 to <5	5 to <10	10 to <15	15 to <20	20 to <25	25 to <30	0 to <15 ^e	0 to <30 ^e	>=30 ^g	Complete ^h
<u>Race/Sex</u>										
All Races ^b	91,507	51,541	32,197	20,082	11,660	6,822	175,244	213,808	6,255	220,063
Males	52,959	29,090	18,065	11,265	6,219	3,257	100,114	120,855	2,876	123,731
Females	38,548	22,451	14,132	8,817	5,441	3,565	75,130	92,953	3,379	96,332
White ^b	80,801	46,082	29,268	18,225	10,618	6,317	156,151	191,311	5,309	196,620
Males	47,284	25,862	16,671	10,344	5,686	3,079	89,817	108,926	2,099	111,025
Females	33,517	20,220	12,597	7,881	4,932	3,238	66,334	82,385	3,210	85,595
Black ^b	6,378	3,104	1,618	974	610	341	11,100	13,025	651	13,676
Males	3,214	1,681	715	475	325	110	5,609	6,520	304	6,824
Females	3,164	1,423	903	499	285	231	5,491	6,505	347	6,852
Asian/Pacific Islander ^c	2,003	1,188	768	+	+	+	3,959	+	+	+
Males	1,144	684	401	+	+	+	2,229	+	+	+
Females	859	504	367	+	+	+	1,730	+	+	+
Hispanic ^d	7,572	4,391	2,957	+	+	+	14,920	+	+	+
Males	4,208	2,501	1,705	+	+	+	8,414	+	+	+
Females	3,364	1,890	1,252	+	+	+	6,506	+	+	+

Estimated prevalence percent^a on January 1, 2005, of the SEER 11 population diagnosed in the previous 15 years
By Age at Prevalence, Race/Ethnicity and Sex

Age at Prevalence	Age Specific (Crude)										Age-Adjusted ^f
	All Ages	0-9	10-19	20-29	30-39	40-49	50-59	60-69	70-79	80+	All Ages
<u>Race/Sex</u>											
All Races ^c	0.0542%	0.0276%	0.0491%	0.0208%	0.0200%	0.0296%	0.0578%	0.1265%	0.1983%	0.2209%	0.0562%
Males	0.0629%	0.0298%	0.0522%	0.0231%	0.0227%	0.0354%	0.0739%	0.1664%	0.2689%	0.2975%	0.0700%
Females	0.0456%	0.0254%	0.0460%	0.0184%	0.0171%	0.0238%	0.0426%	0.1444%	0.1787%	0.1787%	0.0448%
White ^c	0.0610%	0.0307%	0.0550%	0.0233%	0.0212%	0.0311%	0.0616%	0.1398%	0.2206%	0.2421%	0.0616%
Males	0.0705%	0.0335%	0.0582%	0.0259%	0.0240%	0.0371%	0.0782%	0.1829%	0.2977%	0.3273%	0.0766%
Females	0.0514%	0.0277%	0.0516%	0.0204%	0.0182%	0.0250%	0.0454%	0.0999%	0.1603%	0.1957%	0.0491%
Black ^c	0.0286%	0.0123%	0.0244%	0.0136%	0.0154%	0.0208%	0.0434%	0.0704%	0.1271%	0.1135%	0.0339%
Males	0.0319%	0.0113%	0.0240%	0.0156%	0.0177%	0.0258%	0.0562%	0.0897%	0.1587%	0.1488%	0.0409%
Females	0.0257%	0.0133%	0.0248%	0.0117%	0.0134%	0.0164%	0.0329%	0.0553%	0.1061%	0.0965%	0.0288%
Asian/Pacific Islander ^c	0.0296%	0.0251%	0.0413%	0.0137%	0.0174%	0.0236%	0.0314%	0.0561%	0.0601%	0.0615%	0.0310%
Males	0.0346%	0.0257%	0.0466%	0.0144%	0.0203%	0.0279%	0.0377%	0.0714%	0.0811%	0.0923%	0.0372%
Females	0.0250%	0.0246%	0.0356%	0.0131%	0.0146%	0.0196%	0.0259%	0.0433%	0.0449%	0.0410%	0.0257%
Hispanic ^d	0.0356%	0.0293%	0.0565%	0.0214%	0.0197%	0.0259%	0.0369%	0.0755%	0.1011%	0.1141%	0.0419%
Males	0.0388%	0.0316%	0.0591%	0.0256%	0.0220%	0.0289%	0.0455%	0.0796%	0.1376%	0.1492%	0.0487%
Females	0.0322%	0.0270%	0.0538%	0.0163%	0.0170%	0.0228%	0.0289%	0.0722%	0.0748%	0.0938%	0.0361%

^a US 2005 cancer prevalence counts are based on 2005 cancer prevalence proportions from the SEER registries and 1/1/2005 US population estimates based on the average of 2004 and 2005 population estimates from the US Bureau of the Census. Prevalence was calculated using the First Malignant Primary Only for a person.

^{b c d} Statistics based on (b) SEER 9 Areas (c) SEER 11 Areas and Rural Georgia (d) NHIA for Hispanic for SEER 11 Areas and Rural Georgia.

^e Maximum limited-duration prevalence: 30 years for 1975-2005 SEER 9 data; 15 years for 1990-2005 SEER 11 data (used to calculate prevalence for Hispanics and Asian Pacific Islanders).

^f Percentages are age-adjusted to the 2000 US Standard Population (19 age groups - Census P25-1130) by 5-year age groups.

^{g h} (g) Cases diagnosed more than 30 years ago were estimated using the completeness index method (Capocaccia et. al. 1997, Merrill et. al. 2000). (h) Complete prevalence is obtained by summing 0 to <30 and >=30.

- Statistic not shown. Statistic based on fewer than 5 cases estimated alive in SEER for the time interval.

+ Not available.

Table XIII-25
ACUTE LYMPHOCYTIC LEUKEMIA (Invasive)

Estimated United States Cancer Prevalence Counts^a on January 1, 2005
By Race/Ethnicity, Sex and Years Since Diagnosis

Years Since Diagnosis	0 to <5	5 to <10	10 to <15	15 to <20	20 to <25	25 to <30	0 to <15 ^e	0 to <30 ^e	>=30 ^g	Complete ^h
<u>Race/Sex</u>										
All Races ^b	14,454	11,565	9,002	7,886	5,919	3,808	35,021	52,633	3,584	56,217
Males	8,169	6,463	4,953	4,421	3,013	1,901	19,585	28,919	1,846	30,765
Females	6,285	5,102	4,049	3,465	2,906	1,907	15,436	23,714	1,738	25,452
White ^b	12,583	10,035	7,887	6,935	5,341	3,573	30,506	46,356	+	+
Males	7,271	5,560	4,475	3,938	2,732	1,824	17,306	25,801	+	+
Females	5,312	4,475	3,412	2,997	2,609	1,749	13,200	20,555	+	+
Black ^b	969	817	599	462	309	131	2,386	3,289	+	+
Males	422	471	234	228	161	41	1,127	1,557	+	+
Females	547	346	365	234	148	90	1,259	1,732	+	+
Asian/Pacific Islander ^c	599	468	370	+	+	+	1,436	+	+	+
Males	327	294	173	+	+	+	794	+	+	+
Females	272	174	197	+	+	+	642	+	+	+
Hispanic ^d	3,486	2,412	1,726	+	+	+	7,623	+	+	+
Males	1,922	1,361	1,014	+	+	+	4,297	+	+	+
Females	1,564	1,051	712	+	+	+	3,326	+	+	+

Estimated prevalence percent^a on January 1, 2005, of the SEER 11 population diagnosed in the previous 15 years
By Age at Prevalence, Race/Ethnicity and Sex

Age at Prevalence	Age Specific (Crude)										Age-Adjusted ^f
	All Ages	0-9	10-19	20-29	30-39	40-49	50-59	60-69	70-79	80+	All Ages
<u>Race/Sex</u>											
All Races ^c	0.0128%	0.0234%	0.0424%	0.0123%	0.0046%	0.0029%	0.0025%	0.0030%	0.0018%	0.0014%	0.0130%
Males	0.0145%	0.0251%	0.0456%	0.0147%	0.0056%	0.0032%	0.0029%	0.0033%	0.0024%	0.0013%	0.0143%
Females	0.0111%	0.0217%	0.0391%	0.0097%	0.0035%	0.0026%	0.0021%	0.0028%	0.0014%	0.0015%	0.0116%
White ^c	0.0142%	0.0265%	0.0481%	0.0144%	0.0051%	0.0032%	0.0026%	0.0030%	0.0019%	0.0014%	0.0147%
Males	0.0161%	0.0288%	0.0518%	0.0171%	0.0063%	0.0034%	0.0031%	0.0035%	0.0024%	-	0.0162%
Females	0.0123%	0.0241%	0.0444%	0.0114%	0.0037%	0.0029%	0.0021%	0.0026%	0.0016%	0.0016%	0.0130%
Black ^c	0.0062%	0.0079%	0.0183%	0.0063%	0.0023%	0.0013%	-	0.0019%	-	-	0.0055%
Males	0.0064%	0.0071%	0.0177%	0.0077%	0.0018%	0.0021%	-	-	-	-	0.0055%
Females	0.0060%	0.0087%	0.0190%	0.0050%	0.0026%	-	-	-	-	-	0.0055%
Asian/Pacific Islander ^c	0.0100%	0.0207%	0.0343%	0.0066%	0.0040%	0.0028%	0.0029%	0.0036%	0.0022%	-	0.0107%
Males	0.0114%	0.0202%	0.0395%	0.0079%	0.0045%	0.0028%	0.0037%	-	-	-	0.0117%
Females	0.0086%	0.0213%	0.0288%	0.0054%	0.0034%	0.0028%	0.0023%	0.0044%	-	-	0.0096%
Hispanic ^d	0.0184%	0.0257%	0.0502%	0.0132%	0.0054%	0.0045%	0.0039%	0.0049%	-	-	0.0153%
Males	0.0201%	0.0276%	0.0531%	0.0164%	0.0055%	0.0058%	0.0037%	0.0039%	-	-	0.0166%
Females	0.0166%	0.0237%	0.0472%	0.0093%	0.0052%	0.0032%	0.0041%	0.0058%	-	-	0.0139%

^a US 2005 cancer prevalence counts are based on 2005 cancer prevalence proportions from the SEER registries and 1/1/2005 US population estimates based on the average of 2004 and 2005 population estimates from the US Bureau of the Census. Prevalence was calculated using the First Malignant Primary Only for a person.

^{b c d} Statistics based on (b) SEER 9 Areas (c) SEER 11 Areas and Rural Georgia (d) NHIA for Hispanic for SEER 11 Areas and Rural Georgia.

^e Maximum limited-duration prevalence: 30 years for 1975-2005 SEER 9 data; 15 years for 1990-2005 SEER 11 data (used to calculate prevalence for Hispanics and Asian Pacific Islanders).

^f Percentages are age-adjusted to the 2000 US Standard Population (19 age groups - Census P25-1130) by 5-year age groups.

^{g h} (g) Cases diagnosed more than 30 years ago were estimated using the completeness index method (Capocaccia et. al. 1997, Merrill et. al. 2000). (h) Complete prevalence is obtained by summing 0 to <30 and >=30.

- Statistic not shown. Statistic based on fewer than 5 cases estimated alive in SEER for the time interval.

+ Not available.

SEER Incidence, Delay Adjusted Incidence and US Death Rates^a Leukemia, by Race and Sex

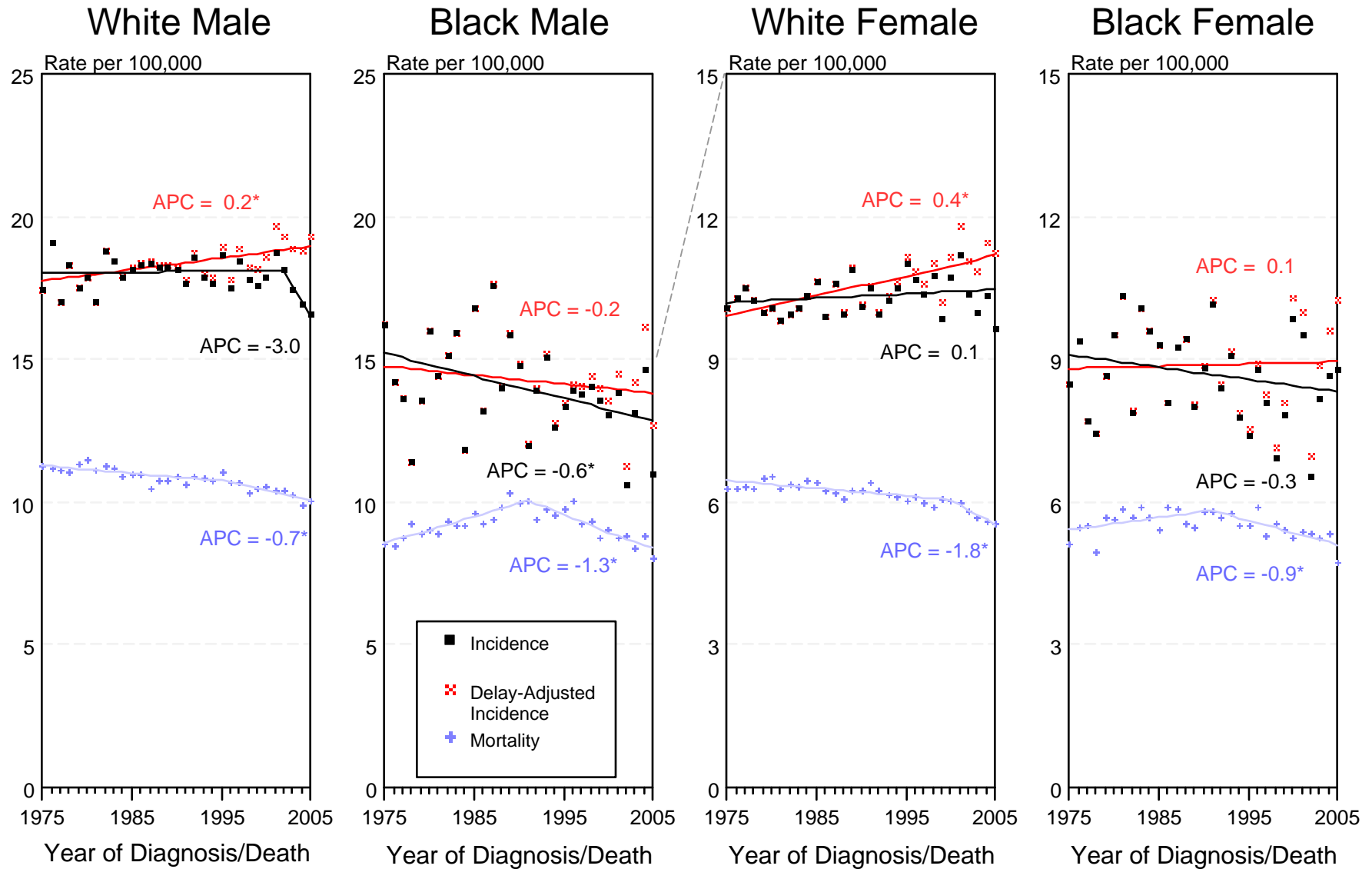


Figure XIII-1

^a Source: SEER 9 areas and US Mortality Files (National Center for Health Statistics, CDC). Rates are age-adjusted to the 2000 US Std Population (19 age groups - Census P25-1103). Regression lines and APCs are calculated using the Joinpoint Regression Program Version 3.3.1, April 2008, National Cancer Institute. The APC is the Annual Percent Change for the regression line segments. The APC shown on the graph is for the most recent trend.

* The APC is significantly different from zero ($p < 0.05$).

SEER Incidence Rates^a

Lymphocytic and Myeloid Leukemia (Acute and Chronic), by Sex

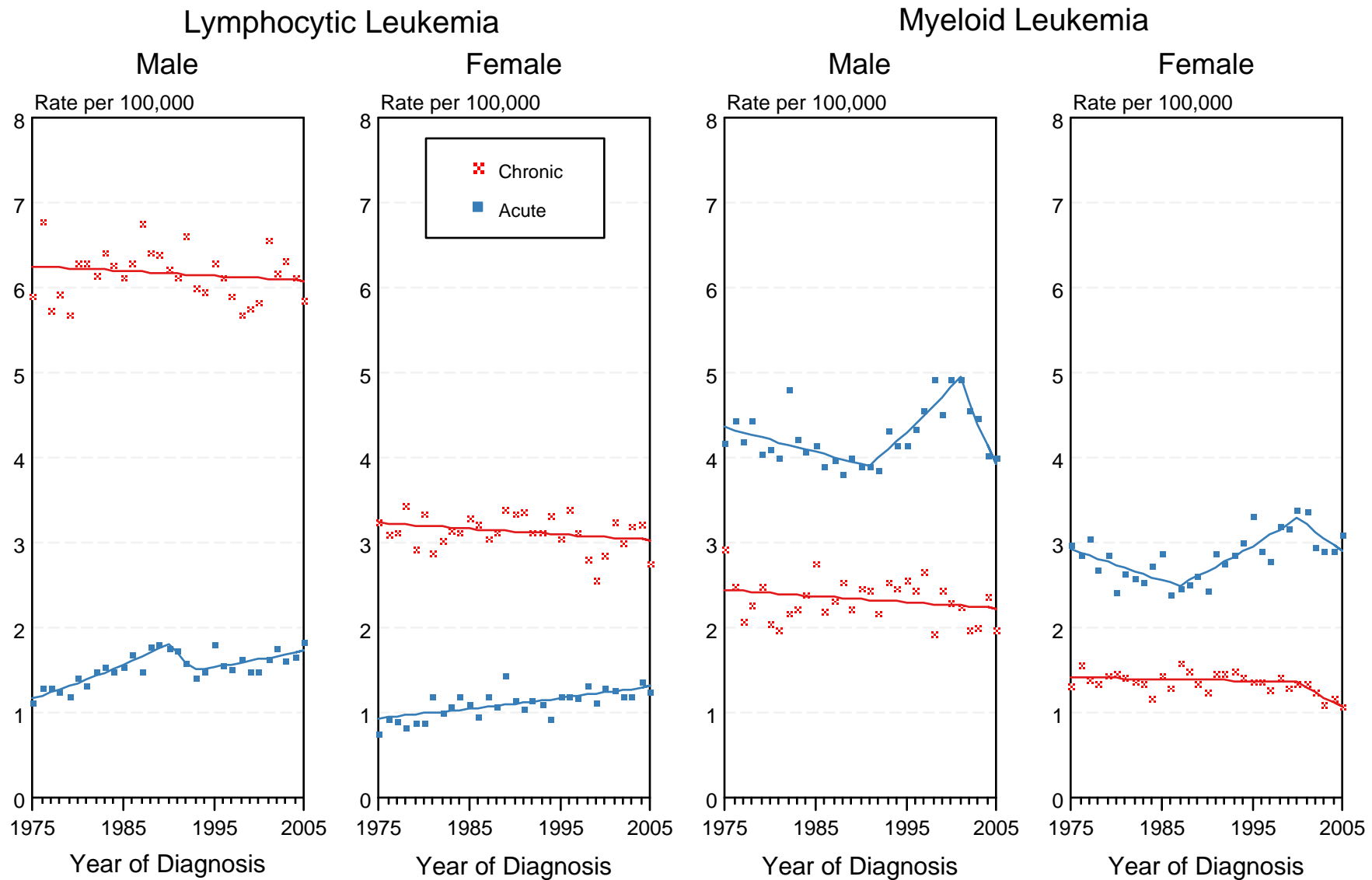


Figure XIII-2

^a Source: SEER 9 areas. Rates are age-adjusted to the 2000 US Std Population (19 age groups - Census P25-1103). Regression lines and APCs are calculated using the Joinpoint Regression Program Version 3.3.1, April 2008, National Cancer Institute.

SEER Incidence and US Death Rates^a Leukemia, Both Sexes

Joinpoint Analyses for Whites and Blacks from 1975-2005
and for Asian/Pacific Islanders, American Indians/Alaska Natives and Hispanics from 1992-2005

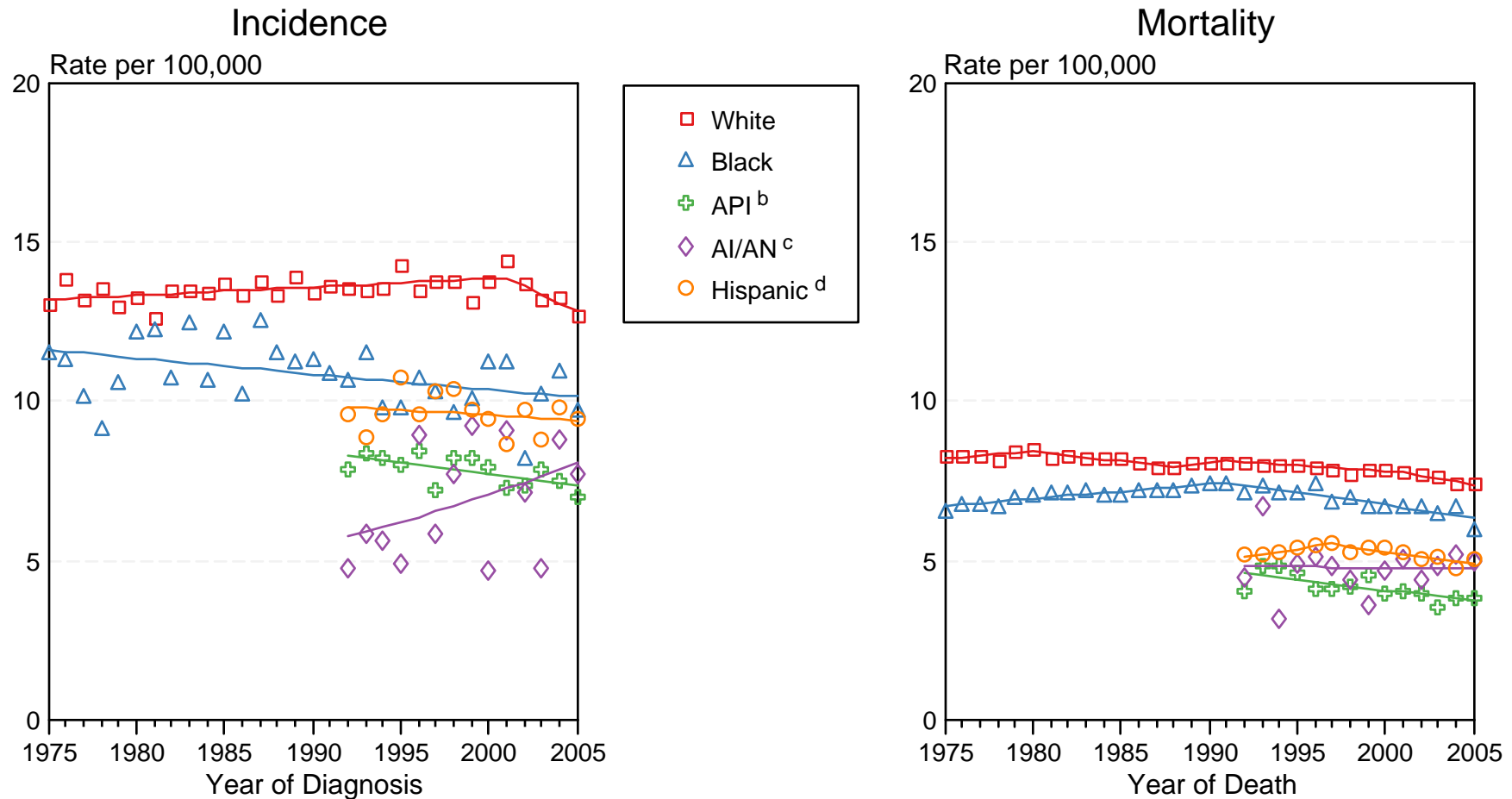


Figure XIII-3

Source: Incidence data for whites and blacks are from the SEER 9 areas (San Francisco, Connecticut, Detroit, Hawaii, Iowa, New Mexico, Seattle, Utah, Atlanta).

Incidence data for Asian/Pacific Islanders, American Indians/Alaska Natives and Hispanics are from the SEER 13 Areas (SEER 9 Areas, San Jose-Monterey, Los Angeles, Alaska Native Registry and Rural Georgia). Mortality data are from US Mortality Files, National Center for Health Statistics, CDC.

^a Rates are age-adjusted to the 2000 US Std Population (19 age groups - Census P25-1103).

Regression lines are calculated using the Joinpoint Regression Program Version 3.3.1, April 2008, National Cancer Institute. Joinpoint analyses for Whites and Blacks during the 1975-2005 period allow a maximum of 4 joinpoints. Analyses for other ethnic groups during the period 1992-2005 allow a maximum of 3 joinpoints.

^b API = Asian/Pacific Islander.

^c AI/AN = American Indian/Alaska Native. Rates for American Indian/Alaska Native are based on the CHSDA(Contract Health Service Delivery Area) counties.

^d Hispanic is not mutually exclusive from whites, blacks, Asian/Pacific Islanders, and American Indians/Alaska Natives. Incidence data for Hispanics are based on NHIA and exclude cases from the Alaska Native Registry. Mortality data for Hispanics exclude cases from Connecticut, Maine, Maryland, Minnesota, New Hampshire, New York, North Dakota, Oklahoma, and Vermont.