

Table VIII-1  
ESOPHAGUS CANCER (Invasive)

TRENDS IN SEER INCIDENCE<sup>a</sup> AND U.S. MORTALITY<sup>b</sup> USING THE JOINTPOINT REGRESSION PROGRAM, 1975-2005  
WITH UP TO THREE JOINTPOINTS BY RACE AND SEX

|  |            | Joinpoint Trend 1 |       | Joinpoint Trend 2 |       | Joinpoint Trend 3 |       | Joinpoint Trend 4 |     | AAPC <sup>c</sup> |           |
|--|------------|-------------------|-------|-------------------|-------|-------------------|-------|-------------------|-----|-------------------|-----------|
|  |            | Years             | APC   | Years             | APC   | Years             | APC   | Years             | APC | 1996-2005         | 2001-2005 |
| <u>SEER Cancer Incidence<sup>a</sup></u>         |            |                   |       |                   |       |                   |       |                   |     |                   |           |
| All Races  | Both Sexes | 1975-2005         | 0.5*  |                   |       |                   |       |                   |     | 0.5*              | 0.5*      |
| All Races  | Male       | 1975-2005         | 0.7*  |                   |       |                   |       |                   |     | 0.7*              | 0.7*      |
| All Races  | Female     | 1975-2005         | -0.3* |                   |       |                   |       |                   |     | -0.3*             | -0.3*     |
| White  | Both Sexes | 1975-2005         | 1.4*  |                   |       |                   |       |                   |     | 1.4*              | 1.4*      |
| White  | Male       | 1975-2005         | 1.7*  |                   |       |                   |       |                   |     | 1.7*              | 1.7*      |
| White  | Female     | 1975-2005         | 0.1   |                   |       |                   |       |                   |     | 0.1               | 0.1       |
| Black  | Both Sexes | 1975-1986         | 1.1   | 1986-2005         | -4.5* |                   |       |                   |     | -4.5*             | -4.5*     |
| Black  | Male       | 1975-1986         | 1.2   | 1986-2005         | -5.0* |                   |       |                   |     | -5.0*             | -5.0*     |
| Black  | Female     | 1975-1980         | 10.1  | 1980-2005         | -2.6* |                   |       |                   |     | -2.6*             | -2.6*     |
| <u>SEER Delay-Adjusted Incidence<sup>a</sup></u> |            |                   |       |                   |       |                   |       |                   |     |                   |           |
| All Races  | Both Sexes | 1975-2005         | 0.5*  |                   |       |                   |       |                   |     | 0.5*              | 0.5*      |
| All Races  | Male       | 1975-2005         | 0.7*  |                   |       |                   |       |                   |     | 0.7*              | 0.7*      |
| All Races  | Female     | 1975-2005         | -0.3* |                   |       |                   |       |                   |     | -0.3*             | -0.3*     |
| White  | Both Sexes | 1975-2005         | 1.4*  |                   |       |                   |       |                   |     | 1.4*              | 1.4*      |
| White  | Male       | 1975-2005         | 1.7*  |                   |       |                   |       |                   |     | 1.7*              | 1.7*      |
| White  | Female     | 1975-2005         | 0.1   |                   |       |                   |       |                   |     | 0.1               | 0.1       |
| Black  | Both Sexes | 1975-1986         | 1.1   | 1986-2005         | -4.5* |                   |       |                   |     | -4.5*             | -4.5*     |
| Black  | Male       | 1975-1986         | 1.2   | 1986-2005         | -4.9* |                   |       |                   |     | -4.9*             | -4.9*     |
| Black  | Female     | 1975-1980         | 10.0  | 1980-2005         | -2.6* |                   |       |                   |     | -2.6*             | -2.6*     |
| <u>U.S. Cancer Mortality<sup>b</sup></u>         |            |                   |       |                   |       |                   |       |                   |     |                   |           |
| All Races  | Both Sexes | 1975-2000         | 0.7*  | 2000-2005         | 0.0   |                   |       |                   |     | 0.3*              | 0.0       |
| All Races  | Male       | 1975-1985         | 0.7*  | 1985-1994         | 1.2*  | 1994-2005         | 0.4*  |                   |     | 0.4*              | 0.4*      |
| All Races  | Female     | 1975-2000         | 0.1   | 2000-2005         | -1.5* |                   |       |                   |     | -0.8*             | -1.5*     |
| White  | Both Sexes | 1975-1983         | 0.4*  | 1983-2000         | 1.7*  | 2000-2005         | 0.8*  |                   |     | 1.2*              | 0.8*      |
| White  | Male       | 1975-1982         | 0.3   | 1982-1999         | 1.9*  | 1999-2005         | 1.0*  |                   |     | 1.3*              | 1.0*      |
| White  | Female     | 1975-2001         | 0.4*  | 2001-2005         | -0.8  |                   |       |                   |     | -0.1              | -0.8      |
| Black  | Both Sexes | 1975-1982         | 1.1*  | 1982-1993         | -1.6* | 1993-2005         | -4.5* |                   |     | -4.5*             | -4.5*     |
| Black  | Male       | 1975-1984         | 0.8   | 1984-1993         | -1.9* | 1993-2005         | -4.7* |                   |     | -4.7*             | -4.7*     |
| Black  | Female     | 1975-1990         | 0.0   | 1990-2005         | -3.3* |                   |       |                   |     | -3.3*             | -3.3*     |

Joinpoint Regression Program Version 3.3.1, April 2008, National Cancer Institute. (<http://srab.cancer.gov/joinpoint/>).

The APC is the Annual Percent Change based on rates age-adjusted to the 2000 US Std Population (19 age groups - Census P25-1130). Trends are from the SEER 9 areas (San Francisco, Connecticut, Detroit, Hawaii, Iowa, New Mexico, Seattle, Utah, and Atlanta).

Trends are from US Mortality Files, National Center for Health Statistics, Centers for Disease Control and Prevention.

The AAPC is the Average Annual Percent Change and is based on the APCs calculated by Joinpoint over the time range of 1975-2005.

The APC/AAPC is significantly different from zero ( $p < .05$ ).

a  
b  
c  
\*

Table VIII-1a  
ESOPHAGUS CANCER (Invasive)

TRENDS IN SEER INCIDENCE<sup>a</sup> AND U.S. MORTALITY<sup>b</sup> USING THE JOINTPOINT REGRESSION PROGRAM, 1975-2005  
 WITH UP TO FOUR JOINTPOINTS BY RACE AND SEX

|  |            | <u>Joinpoint Trend 1</u> |       | <u>Joinpoint Trend 2</u> |       | <u>Joinpoint Trend 3</u> |       | <u>Joinpoint Trend 4</u> |     | <u>Joinpoint Trend 5</u> |     | <u>AAPC<sup>c</sup></u> |
|--|------------|--------------------------|-------|--------------------------|-------|--------------------------|-------|--------------------------|-----|--------------------------|-----|-------------------------|
|  |            | Years                    | APC   | Years                    | APC   | Years                    | APC   | Years                    | APC | Years                    | APC | 2001-2005               |
| <u>SEER Cancer Incidence<sup>a</sup></u>         |            |                          |       |                          |       |                          |       |                          |     |                          |     |                         |
| All Races  | Both Sexes | 1975-2005                | 0.5*  |                          |       |                          |       |                          |     |                          |     | 0.5*                    |
| All Races  | Male       | 1975-2005                | 0.7*  |                          |       |                          |       |                          |     |                          |     | 0.7*                    |
| All Races  | Female     | 1975-2005                | -0.3* |                          |       |                          |       |                          |     |                          |     | -0.3*                   |
| White  | Both Sexes | 1975-2005                | 1.4*  |                          |       |                          |       |                          |     |                          |     | 1.4*                    |
| White  | Male       | 1975-2005                | 1.7*  |                          |       |                          |       |                          |     |                          |     | 1.7*                    |
| White  | Female     | 1975-2005                | 0.1   |                          |       |                          |       |                          |     |                          |     | 0.1                     |
| Black  | Both Sexes | 1975-1986                | 1.1   | 1986-2005                | -4.5* |                          |       |                          |     |                          |     | -4.5*                   |
| Black  | Male       | 1975-1986                | 1.2   | 1986-2005                | -5.0* |                          |       |                          |     |                          |     | -5.0*                   |
| Black  | Female     | 1975-1980                | 10.1  | 1980-2005                | -2.6* |                          |       |                          |     |                          |     | -2.6*                   |
| <u>SEER Delay-Adjusted Incidence<sup>a</sup></u> |            |                          |       |                          |       |                          |       |                          |     |                          |     |                         |
| All Races  | Both Sexes | 1975-2005                | 0.5*  |                          |       |                          |       |                          |     |                          |     | 0.5*                    |
| All Races  | Male       | 1975-2005                | 0.7*  |                          |       |                          |       |                          |     |                          |     | 0.7*                    |
| All Races  | Female     | 1975-2005                | -0.3* |                          |       |                          |       |                          |     |                          |     | -0.3*                   |
| White  | Both Sexes | 1975-2005                | 1.4*  |                          |       |                          |       |                          |     |                          |     | 1.4*                    |
| White  | Male       | 1975-2005                | 1.7*  |                          |       |                          |       |                          |     |                          |     | 1.7*                    |
| White  | Female     | 1975-2005                | 0.1   |                          |       |                          |       |                          |     |                          |     | 0.1                     |
| Black  | Both Sexes | 1975-1986                | 1.1   | 1986-2005                | -4.5* |                          |       |                          |     |                          |     | -4.5*                   |
| Black  | Male       | 1975-1986                | 1.2   | 1986-2005                | -4.9* |                          |       |                          |     |                          |     | -4.9*                   |
| Black  | Female     | 1975-1980                | 10.0  | 1980-2005                | -2.6* |                          |       |                          |     |                          |     | -2.6*                   |
| <u>U.S. Cancer Mortality<sup>b</sup></u>         |            |                          |       |                          |       |                          |       |                          |     |                          |     |                         |
| All Races  | Both Sexes | 1975-2000                | 0.7*  | 2000-2005                | 0.0   |                          |       |                          |     |                          |     | 0.0                     |
| All Races  | Male       | 1975-1985                | 0.7*  | 1985-1994                | 1.2*  | 1994-2005                | 0.4*  |                          |     |                          |     | 0.4*                    |
| All Races  | Female     | 1975-2000                | 0.1   | 2000-2005                | -1.5* |                          |       |                          |     |                          |     | -1.5*                   |
| White  | Both Sexes | 1975-1983                | 0.4*  | 1983-2000                | 1.7*  | 2000-2005                | 0.8*  |                          |     |                          |     | 0.8*                    |
| White  | Male       | 1975-1982                | 0.3   | 1982-1999                | 1.9*  | 1999-2005                | 1.0*  |                          |     |                          |     | 1.0*                    |
| White  | Female     | 1975-2005                | 0.4*  |                          |       |                          |       |                          |     |                          |     | 0.4*                    |
| Black  | Both Sexes | 1975-1982                | 1.1*  | 1982-1993                | -1.6* | 1993-2005                | -4.5* |                          |     |                          |     | -4.5*                   |
| Black  | Male       | 1975-1984                | 0.8   | 1984-1993                | -1.9* | 1993-2005                | -4.7* |                          |     |                          |     | -4.7*                   |
| Black  | Female     | 1975-1990                | 0.0   | 1990-2005                | -3.3* |                          |       |                          |     |                          |     | -3.3*                   |

Joinpoint Regression Program Version 3.3.1, April 2008, National Cancer Institute. (<http://srab.cancer.gov/joinpoint/>).

The APC is the Annual Percent Change based on rates age-adjusted to the 2000 US Std Population (19 age groups - Census P25-1130).

Trends are from the SEER 9 areas (San Francisco, Connecticut, Detroit, Hawaii, Iowa, New Mexico, Seattle, Utah, and Atlanta).

Trends are from US Mortality Files, National Center for Health Statistics, Centers for Disease Control and Prevention.

The AAPC is the Average Annual Percent Change and is based on the APCs calculated by Joinpoint over the time range of 1975-2005.

The APC/AAPC is significantly different from zero ( $p < .05$ ).

a  
b  
c  
\*

Table VIII-2  
ESOPHAGUS CANCER (Invasive)

AGE ADJUSTED SEER INCIDENCE<sup>a</sup> RATES BY YEAR, RACE AND SEX

|                           | <u>All Races</u> |              |                | <u>Whites</u> |              |                | <u>Blacks</u> |              |                |
|---------------------------|------------------|--------------|----------------|---------------|--------------|----------------|---------------|--------------|----------------|
|                           | <u>Total</u>     | <u>Males</u> | <u>Females</u> | <u>Total</u>  | <u>Males</u> | <u>Females</u> | <u>Total</u>  | <u>Males</u> | <u>Females</u> |
| <u>AGE-ADJUSTED RATES</u> |                  |              |                |               |              |                |               |              |                |
| <u>YEAR OF DIAGNOSIS:</u> |                  |              |                |               |              |                |               |              |                |
| 1975                      | 4.1              | 6.8          | 2.1            | 3.5           | 5.6          | 2.0            | 10.9          | 19.9         | 3.7            |
| 1976                      | 4.3              | 6.9          | 2.3            | 3.7           | 5.9          | 2.1            | 10.7          | 16.9         | 5.6            |
| 1977                      | 4.1              | 6.6          | 2.2            | 3.3           | 5.3          | 1.9            | 12.0          | 20.9         | 5.4            |
| 1978                      | 4.1              | 7.0          | 1.9            | 3.4           | 5.7          | 1.7            | 13.0          | 24.4         | 4.3            |
| 1979                      | 4.4              | 7.4          | 2.2            | 3.7           | 6.2          | 2.0            | 12.9          | 23.0         | 5.2            |
| 1980                      | 4.3              | 6.9          | 2.3            | 3.5           | 5.7          | 1.9            | 12.3          | 18.8         | 7.4            |
| 1981                      | 4.1              | 6.5          | 2.4            | 3.3           | 5.2          | 1.9            | 13.5          | 21.3         | 7.5            |
| 1982                      | 4.3              | 6.8          | 2.3            | 3.5           | 5.5          | 2.0            | 13.6          | 22.7         | 6.4            |
| 1983                      | 4.3              | 7.4          | 2.0            | 3.6           | 6.1          | 1.8            | 12.2          | 22.2         | 4.3            |
| 1984                      | 4.2              | 6.7          | 2.3            | 3.5           | 5.6          | 1.9            | 12.0          | 19.9         | 6.0            |
| 1985                      | 4.5              | 7.4          | 2.2            | 3.7           | 6.3          | 1.9            | 12.7          | 22.1         | 5.8            |
| 1986                      | 4.6              | 7.5          | 2.5            | 3.9           | 6.2          | 2.2            | 14.1          | 24.0         | 6.3            |
| 1987                      | 4.6              | 7.5          | 2.3            | 3.9           | 6.4          | 2.0            | 11.4          | 20.1         | 4.8            |
| 1988                      | 4.4              | 7.3          | 2.2            | 3.9           | 6.3          | 2.0            | 11.2          | 19.5         | 5.0            |
| 1989                      | 4.4              | 7.3          | 2.2            | 3.8           | 6.2          | 2.0            | 10.5          | 17.3         | 5.4            |
| 1990                      | 4.8              | 8.3          | 2.2            | 4.2           | 7.2          | 1.9            | 12.5          | 21.4         | 5.8            |
| 1991                      | 4.6              | 7.4          | 2.4            | 4.2           | 6.7          | 2.2            | 10.2          | 17.8         | 4.9            |
| 1992                      | 4.6              | 8.0          | 2.0            | 4.2           | 7.4          | 1.8            | 10.6          | 18.0         | 5.3            |
| 1993                      | 4.6              | 7.7          | 2.2            | 4.2           | 6.9          | 2.1            | 10.0          | 17.5         | 4.6            |
| 1994                      | 4.5              | 7.7          | 2.1            | 4.2           | 7.2          | 1.9            | 9.2           | 14.7         | 5.1            |
| 1995                      | 4.4              | 7.1          | 2.2            | 4.1           | 6.6          | 2.1            | 8.4           | 13.7         | 4.4            |
| 1996                      | 4.8              | 8.1          | 2.2            | 4.4           | 7.5          | 2.0            | 9.7           | 16.4         | 4.8            |
| 1997                      | 4.7              | 7.8          | 2.2            | 4.6           | 7.7          | 2.0            | 7.1           | 10.8         | 4.5            |
| 1998                      | 4.7              | 8.2          | 2.0            | 4.5           | 7.9          | 1.9            | 7.8           | 12.5         | 4.3            |
| 1999                      | 4.9              | 8.4          | 2.1            | 4.9           | 8.4          | 2.0            | 7.2           | 11.5         | 4.1            |
| 2000                      | 4.8              | 8.0          | 2.2            | 4.7           | 8.0          | 2.0            | 7.0           | 10.6         | 4.4            |
| 2001                      | 4.8              | 8.5          | 1.9            | 4.8           | 8.4          | 1.9            | 6.3           | 11.4         | 2.6            |
| 2002                      | 4.6              | 7.9          | 2.0            | 4.6           | 8.0          | 1.8            | 6.4           | 10.0         | 3.6            |
| 2003                      | 4.6              | 8.0          | 1.9            | 4.7           | 8.2          | 1.9            | 6.2           | 10.0         | 3.7            |
| 2004                      | 5.2              | 8.9          | 2.4            | 5.4           | 9.1          | 2.3            | 6.1           | 8.8          | 4.0            |
| 2005                      | 4.5              | 7.9          | 1.8            | 4.7           | 8.3          | 1.7            | 4.8           | 7.9          | 2.7            |
| 1975-2005                 | 4.5              | 7.6          | 2.2            | 4.2           | 7.0          | 2.0            | 9.5           | 15.9         | 4.7            |

<sup>a</sup> SEER 9 areas (San Francisco, Connecticut, Detroit, Hawaii, Iowa, New Mexico, Seattle, Utah, and Atlanta). Rates are per 100,000 and are age-adjusted to the 2000 US Std Population (19 age groups - Census P25-1130).

- Statistic not shown. Rate based on less than 16 cases for the time interval.

Table VIII-3  
ESOPHAGUS CANCER (Invasive)

AGE-ADJUSTED U.S. DEATH<sup>a</sup> RATES BY YEAR, RACE AND SEX

|                           | <u>All Races</u> |              |                | <u>Whites</u> |              |                | <u>Blacks</u> |              |                |
|---------------------------|------------------|--------------|----------------|---------------|--------------|----------------|---------------|--------------|----------------|
|                           | <u>Total</u>     | <u>Males</u> | <u>Females</u> | <u>Total</u>  | <u>Males</u> | <u>Females</u> | <u>Total</u>  | <u>Males</u> | <u>Females</u> |
| <u>AGE-ADJUSTED RATES</u> |                  |              |                |               |              |                |               |              |                |
| <u>YEAR OF DEATH:</u>     |                  |              |                |               |              |                |               |              |                |
| 1975                      | 3.7              | 6.4          | 1.7            | 3.1           | 5.4          | 1.5            | 9.7           | 17.0         | 4.1            |
| 1976                      | 3.7              | 6.4          | 1.8            | 3.1           | 5.3          | 1.5            | 10.2          | 17.7         | 4.3            |
| 1977                      | 3.7              | 6.3          | 1.8            | 3.1           | 5.2          | 1.5            | 10.1          | 17.6         | 4.4            |
| 1978                      | 3.8              | 6.4          | 1.8            | 3.2           | 5.4          | 1.6            | 10.0          | 17.6         | 4.3            |
| 1979                      | 3.8              | 6.4          | 1.8            | 3.1           | 5.3          | 1.5            | 10.3          | 18.6         | 4.2            |
| 1980                      | 3.8              | 6.6          | 1.8            | 3.2           | 5.5          | 1.5            | 10.6          | 18.3         | 4.9            |
| 1981                      | 3.8              | 6.6          | 1.8            | 3.2           | 5.4          | 1.5            | 10.4          | 18.7         | 4.3            |
| 1982                      | 3.8              | 6.5          | 1.8            | 3.2           | 5.4          | 1.6            | 10.5          | 18.6         | 4.5            |
| 1983                      | 3.9              | 6.6          | 1.8            | 3.2           | 5.6          | 1.5            | 10.2          | 17.9         | 4.5            |
| 1984                      | 3.9              | 6.7          | 1.9            | 3.3           | 5.6          | 1.6            | 10.6          | 18.8         | 4.6            |
| 1985                      | 3.9              | 6.7          | 1.7            | 3.3           | 5.7          | 1.5            | 9.9           | 17.7         | 4.3            |
| 1986                      | 3.9              | 6.8          | 1.8            | 3.3           | 5.8          | 1.6            | 10.2          | 18.0         | 4.5            |
| 1987                      | 4.0              | 6.9          | 1.8            | 3.4           | 6.0          | 1.5            | 9.7           | 17.1         | 4.4            |
| 1988                      | 4.0              | 7.0          | 1.8            | 3.5           | 6.0          | 1.6            | 10.0          | 18.4         | 3.9            |
| 1989                      | 4.1              | 7.1          | 1.8            | 3.6           | 6.2          | 1.6            | 9.7           | 17.3         | 4.3            |
| 1990                      | 4.1              | 7.2          | 1.8            | 3.6           | 6.3          | 1.5            | 9.3           | 16.3         | 4.4            |
| 1991                      | 4.1              | 7.2          | 1.8            | 3.6           | 6.4          | 1.6            | 9.2           | 16.5         | 4.1            |
| 1992                      | 4.2              | 7.3          | 1.8            | 3.7           | 6.6          | 1.6            | 8.6           | 15.1         | 4.1            |
| 1993                      | 4.2              | 7.3          | 1.8            | 3.7           | 6.6          | 1.6            | 9.0           | 16.0         | 4.1            |
| 1994                      | 4.3              | 7.6          | 1.8            | 3.9           | 6.9          | 1.6            | 8.6           | 15.3         | 3.9            |
| 1995                      | 4.3              | 7.6          | 1.8            | 3.9           | 7.0          | 1.6            | 8.0           | 14.4         | 3.5            |
| 1996                      | 4.3              | 7.5          | 1.9            | 4.0           | 7.1          | 1.7            | 7.8           | 13.6         | 3.7            |
| 1997                      | 4.3              | 7.5          | 1.8            | 4.0           | 7.1          | 1.6            | 7.3           | 12.8         | 3.4            |
| 1998                      | 4.4              | 7.7          | 1.8            | 4.1           | 7.3          | 1.7            | 7.1           | 12.2         | 3.6            |
| 1999                      | 4.3              | 7.7          | 1.8            | 4.2           | 7.4          | 1.6            | 6.5           | 11.6         | 3.1            |
| 2000                      | 4.4              | 7.7          | 1.8            | 4.3           | 7.6          | 1.7            | 6.4           | 10.9         | 3.3            |
| 2001                      | 4.4              | 7.8          | 1.8            | 4.3           | 7.7          | 1.7            | 6.4           | 11.3         | 3.0            |
| 2002                      | 4.4              | 7.8          | 1.7            | 4.3           | 7.8          | 1.6            | 5.9           | 10.2         | 2.9            |
| 2003                      | 4.4              | 7.7          | 1.7            | 4.3           | 7.7          | 1.7            | 5.7           | 9.7          | 2.9            |
| 2004                      | 4.4              | 7.7          | 1.7            | 4.3           | 7.8          | 1.6            | 5.4           | 9.1          | 2.9            |
| 2005                      | 4.4              | 7.9          | 1.7            | 4.5           | 8.1          | 1.6            | 5.0           | 8.9          | 2.3            |
| 1975-2005                 | 4.1              | 7.2          | 1.8            | 3.7           | 6.6          | 1.6            | 8.3           | 14.6         | 3.8            |

<sup>a</sup> US Mortality Files, National Center for Health Statistics, Centers for Disease Control and Prevention. Rates are per 100,000 and are age-adjusted to the 2000 US Std Population (19 age groups - Census P25-1130).  
 - Statistic not shown. Rate based on less than 16 cases for the time interval.

Table VIII-4  
ESOPHAGUS CANCER (Invasive)

SEER INCIDENCE<sup>a</sup> AND U.S. DEATH<sup>b</sup> RATES, AGE-ADJUSTED AND AGE-SPECIFIC RATES, BY RACE AND SEX

|                                       | All Races |       |         | Whites |       |         | Blacks |       |         |
|---------------------------------------|-----------|-------|---------|--------|-------|---------|--------|-------|---------|
|                                       | Total     | Males | Females | Total  | Males | Females | Total  | Males | Females |
| <u>SEER INCIDENCE</u>                 |           |       |         |        |       |         |        |       |         |
| <u>AGE AT DIAGNOSIS</u>               |           |       |         |        |       |         |        |       |         |
| AGE-ADJUSTED RATES, 2001-2005         |           |       |         |        |       |         |        |       |         |
| All ages                              | 4.6       | 7.8   | 2.0     | 4.6    | 8.0   | 1.9     | 5.9    | 9.9   | 3.0     |
| Under 65                              | 1.9       | 3.1   | 0.6     | 1.8    | 3.2   | 0.6     | 2.9    | 4.7   | 1.4     |
| 65 and over                           | 23.3      | 40.4  | 11.2    | 23.9   | 41.5  | 11.2    | 26.6   | 46.1  | 14.2    |
| All ages(IARC world std) <sup>c</sup> | 3.0       | 5.1   | 1.2     | 3.0    | 5.2   | 1.2     | 4.1    | 6.9   | 2.0     |
| AGE-SPECIFIC RATES, 2001-2005         |           |       |         |        |       |         |        |       |         |
| <1                                    | -         | -     | -       | -      | -     | -       | -      | -     | -       |
| 1-4                                   | -         | -     | -       | -      | -     | -       | -      | -     | -       |
| 5-9                                   | -         | -     | -       | -      | -     | -       | -      | -     | -       |
| 10-14                                 | -         | -     | -       | -      | -     | -       | -      | -     | -       |
| 15-19                                 | -         | -     | -       | -      | -     | -       | -      | -     | -       |
| 20-24                                 | -         | -     | -       | -      | -     | -       | -      | -     | -       |
| 25-29                                 | 0.1       | -     | -       | -      | -     | -       | -      | -     | -       |
| 30-34                                 | 0.2       | 0.2   | -       | 0.2    | 0.3   | -       | -      | -     | -       |
| 35-39                                 | 0.4       | 0.6   | 0.2     | 0.4    | 0.6   | 0.2     | -      | -     | -       |
| 40-44                                 | 1.0       | 1.7   | 0.4     | 1.0    | 1.7   | 0.3     | 1.6    | 2.6   | -       |
| 45-49                                 | 2.6       | 4.3   | 1.0     | 2.6    | 4.4   | 0.9     | 4.1    | 5.6   | 2.7     |
| 50-54                                 | 5.2       | 9.1   | 1.5     | 5.2    | 9.2   | 1.3     | 8.0    | 13.2  | 3.5     |
| 55-59                                 | 9.0       | 15.4  | 3.0     | 8.9    | 15.3  | 2.7     | 15.2   | 25.5  | 6.7     |
| 60-64                                 | 13.7      | 23.4  | 4.9     | 13.7   | 23.3  | 4.7     | 21.2   | 36.3  | 9.1     |
| 65-69                                 | 19.4      | 32.8  | 7.8     | 19.6   | 33.1  | 7.7     | 27.2   | 46.3  | 12.6    |
| 70-74                                 | 23.7      | 39.6  | 10.9    | 24.3   | 40.9  | 10.8    | 28.9   | 46.0  | 16.9    |
| 75-79                                 | 26.0      | 45.6  | 12.0    | 27.0   | 47.4  | 12.3    | 29.2   | 51.4  | 15.5    |
| 80-84                                 | 26.2      | 46.3  | 13.6    | 26.7   | 47.4  | 13.7    | 24.3   | 44.0  | 13.5    |
| 85+                                   | 23.4      | 42.4  | 14.7    | 24.1   | 43.8  | 15.2    | 18.6   | 39.0  | 10.3    |
| <u>U.S. MORTALITY</u>                 |           |       |         |        |       |         |        |       |         |
| <u>AGE AT DEATH</u>                   |           |       |         |        |       |         |        |       |         |
| AGE-ADJUSTED RATES, 2001-2005         |           |       |         |        |       |         |        |       |         |
| All ages                              | 4.4       | 7.8   | 1.7     | 4.4    | 7.8   | 1.6     | 5.7    | 9.8   | 2.8     |
| Under 65                              | 1.7       | 3.0   | 0.5     | 1.7    | 2.9   | 0.4     | 2.7    | 4.5   | 1.2     |
| 65 and over                           | 23.0      | 41.2  | 10.1    | 23.0   | 41.5  | 9.8     | 26.5   | 46.4  | 14.2    |
| All ages(IARC world std) <sup>c</sup> | 2.8       | 5.0   | 1.0     | 2.8    | 4.9   | 0.9     | 3.9    | 6.7   | 1.8     |
| AGE-SPECIFIC RATES, 2001-2005         |           |       |         |        |       |         |        |       |         |
| <1                                    | -         | -     | -       | -      | -     | -       | -      | -     | -       |
| 1-4                                   | -         | -     | -       | -      | -     | -       | -      | -     | -       |
| 5-9                                   | -         | -     | -       | -      | -     | -       | -      | -     | -       |
| 10-14                                 | -         | -     | -       | -      | -     | -       | -      | -     | -       |
| 15-19                                 | -         | -     | -       | -      | -     | -       | -      | -     | -       |
| 20-24                                 | 0.0       | -     | -       | 0.0    | -     | -       | -      | -     | -       |
| 25-29                                 | 0.0       | 0.1   | -       | 0.0    | 0.1   | -       | -      | -     | -       |
| 30-34                                 | 0.1       | 0.2   | 0.0     | 0.1    | 0.2   | -       | -      | -     | -       |
| 35-39                                 | 0.3       | 0.6   | 0.1     | 0.4    | 0.6   | 0.1     | 0.3    | 0.5   | -       |
| 40-44                                 | 1.0       | 1.7   | 0.3     | 1.0    | 1.7   | 0.3     | 1.4    | 2.2   | 0.7     |
| 45-49                                 | 2.4       | 4.1   | 0.7     | 2.3    | 3.9   | 0.6     | 3.7    | 6.1   | 1.7     |
| 50-54                                 | 4.8       | 8.4   | 1.3     | 4.6    | 8.2   | 1.1     | 7.4    | 12.5  | 3.1     |
| 55-59                                 | 8.4       | 14.7  | 2.5     | 8.0    | 14.2  | 2.1     | 13.7   | 23.3  | 5.7     |
| 60-64                                 | 12.9      | 22.5  | 4.1     | 12.5   | 22.0  | 3.6     | 20.1   | 34.8  | 8.7     |
| 65-69                                 | 17.8      | 31.2  | 6.2     | 17.4   | 30.6  | 5.8     | 25.4   | 44.5  | 11.3    |
| 70-74                                 | 22.2      | 39.0  | 8.8     | 22.2   | 39.1  | 8.4     | 28.1   | 47.8  | 14.8    |
| 75-79                                 | 26.1      | 47.0  | 11.3    | 26.4   | 47.6  | 11.0    | 29.3   | 51.6  | 16.0    |
| 80-84                                 | 27.4      | 51.0  | 13.0    | 27.8   | 52.0  | 12.9    | 26.6   | 47.8  | 15.5    |
| 85+                                   | 25.3      | 46.5  | 16.0    | 25.9   | 47.9  | 16.3    | 20.8   | 37.2  | 14.4    |

<sup>a</sup> SEER 17 areas. Rates are per 100,000 and are age-adjusted to the 2000 US Std Population (19 age groups - Census P25-1130), unless noted.

<sup>b</sup> US Mortality Files, National Center for Health Statistics, Centers for Disease Control and Prevention. Rates are per 100,000 and are age-adjusted to the 2000 US Std Population (19 age groups - Census P25-1130), unless noted.

<sup>c</sup> Rates are per 100,000 and are age-adjusted to the IARC world standard population.

- Statistic not shown. Rate based on less than 16 cases for the time interval.

Table VIII-5  
ESOPHAGUS CANCER (Invasive)

SURVIVAL RATES, BY RACE, SEX, DIAGNOSIS YEAR, STAGE AND AGE

|  | All Races         |                   |                   | Whites            |                   |                   | Blacks            |                   |                   |
|--|-------------------|-------------------|-------------------|-------------------|-------------------|-------------------|-------------------|-------------------|-------------------|
|  | Total             | Males             | Females           | Total             | Males             | Females           | Total             | Males             | Females           |
| <u>5-YR RELATIVE SURVIVAL RATES</u>                        |                   |                   |                   |                   |                   |                   |                   |                   |                   |
| YEAR OF DIAGNOSIS:   |                   |                   |                   |                   |                   |                   |                   |                   |                   |
| 1960-1963 <sup>a</sup>                                     | -                 | -                 | -                 | 4                 | 4                 | 6                 | 1                 | 0                 | 2                 |
| 1970-1973 <sup>a</sup>                                     | -                 | -                 | -                 | 4                 | 4                 | 4                 | 4                 | 4                 | 3                 |
| 1975-1977 <sup>b</sup>                                     | 5.1               | 4.0               | 7.5               | 5.6               | 4.9               | 7.1               | 3.1               | 1.6               | 7.1               |
| 1978-1980 <sup>b</sup>                                     | 5.2               | 4.9               | 5.7               | 5.6               | 5.6               | 5.3               | 4.3               | 3.3               | 7.0               |
| 1981-1983 <sup>b</sup>                                     | 6.8               | 6.2               | 8.4               | 7.6               | 6.8               | 9.3               | 4.3               | 3.6               | 6.5               |
| 1984-1986 <sup>b</sup>                                     | 9.7               | 8.5               | 12.5              | 10.6              | 9.3               | 13.6              | 8.2               | 7.6               | 9.9               |
| 1987-1989 <sup>b</sup>                                     | 9.8               | 9.6               | 10.1              | 11.0              | 11.4              | 9.8               | 6.4               | 5.0               | 10.3              |
| 1990-1992 <sup>b</sup>                                     | 12.7              | 12.3              | 13.8              | 13.6              | 12.9              | 15.4              | 9.4               | 9.7               | 8.4               |
| 1993-1995 <sup>b</sup>                                     | 12.7              | 12.8              | 12.4              | 14.3              | 14.4              | 13.7              | 7.5               | 7.6               | 7.2               |
| 1996-2004 <sup>b</sup>                                     | 16.9 <sup>e</sup> | 16.4 <sup>e</sup> | 18.9 <sup>e</sup> | 18.1 <sup>e</sup> | 17.6 <sup>e</sup> | 19.7 <sup>e</sup> | 11.1 <sup>e</sup> | 9.0 <sup>e</sup>  | 15.6              |
| <u>5-YR PERIOD SURVIVAL RATES<sup>cd</sup></u>             |                   |                   |                   |                   |                   |                   |                   |                   |                   |
| YEAR OF DIAGNOSIS:   |                   |                   |                   |                   |                   |                   |                   |                   |                   |
| 1996-2004  | 17.1              | 16.5              | 19.4              | 18.2              | 17.8              | 19.8              | 10.3              | 8.5               | 14.8              |
| <u>STAGE DISTRIBUTION (%) 1996-2004<sup>c</sup></u>        |                   |                   |                   |                   |                   |                   |                   |                   |                   |
| All Stages   |                   |                   |                   |                   |                   |                   |                   |                   |                   |
| Number of cases  | 17,946            | 13,588            | 4,358             | 14,661            | 11,243            | 3,418             | 2,220             | 1,533             | 687               |
| Percent  | 100%              | 100%              | 100%              | 100%              | 100%              | 100%              | 100%              | 100%              | 100%              |
| Localized  | 24                | 23                | 25                | 24                | 24                | 27                | 21                | 21                | 22                |
| Regional   | 30                | 31                | 28                | 30                | 31                | 27                | 29                | 30                | 29                |
| Distant  | 30                | 32                | 25                | 30                | 32                | 24                | 32                | 33                | 29                |
| Unstaged   | 16                | 14                | 21                | 16                | 14                | 22                | 17                | 16                | 20                |
| <u>5-YR RELATIVE SURVIVAL RATES, 1996-2004<sup>c</sup></u> |                   |                   |                   |                   |                   |                   |                   |                   |                   |
| AGE AT DIAGNOSIS:  |                   |                   |                   |                   |                   |                   |                   |                   |                   |
| <45  | 20.9              | 20.4              | 22.8              | 21.4              | 20.4              | 27.0 <sup>f</sup> | 17.4              | 18.9 <sup>f</sup> | 14.3 <sup>f</sup> |
| 45-54  | 17.2              | 17.0              | 17.8              | 18.8              | 18.8              | 17.9              | 11.1              | 8.7               | 17.8              |
| 55-64  | 17.3              | 16.5              | 21.0              | 18.4              | 17.4              | 23.3              | 11.3              | 10.5              | 13.1              |
| 65-74  | 15.8              | 15.3              | 17.3              | 16.7              | 16.4              | 17.5              | 8.0               | 6.2               | 11.6              |
| 75+  | 11.7              | 10.9              | 13.0              | 12.3              | 11.4              | 13.7              | 6.9               | 7.3               | 5.4               |
| Under 65   | 17.7              | 17.1              | 20.4              | 18.9              | 18.3              | 22.2              | 11.9              | 10.5              | 15.2              |
| 65 and over  | 14.1              | 13.7              | 15.1              | 14.8              | 14.5              | 15.5              | 7.7               | 6.6               | 9.5               |
| STAGE:   |                   |                   |                   |                   |                   |                   |                   |                   |                   |
| All Stages   | 15.8              | 15.5              | 17.0              | 16.7              | 16.5              | 17.6              | 10.3              | 9.2               | 12.9              |
| Localized  | 34.4              | 35.0              | 32.1              | 36.7              | 37.8              | 32.7              | 19.1              | 15.7              | 25.9              |
| Regional   | 17.1              | 16.2              | 20.3              | 18.3              | 17.6              | 20.7              | 11.2              | 9.1               | 16.4              |
| Distant  | 2.8               | 2.7               | 3.2               | 2.8               | 2.6               | 3.5               | 2.0               | 2.0               | 1.8               |
| Unstaged   | 11.6              | 11.4              | 12.0              | 10.6              | 10.0              | 11.7              | 13.3              | 14.7              | 10.3              |

<sup>a</sup> Rates are based on End Results data from a series of hospital registries and one population-based registry.  
<sup>b</sup> Rates are from the SEER 9 areas (San Francisco, Connecticut, Detroit, Hawaii, Iowa, New Mexico, Seattle, Utah, Atlanta).  
Rates are based on follow-up of patients into 2005.  
<sup>c</sup> Rates are from the SEER 17 areas (San Francisco, Connecticut, Detroit, Hawaii, Iowa, New Mexico, Seattle, Utah, Atlanta, San Jose-Monterey, Los Angeles, Alaska Native Registry, Rural Georgia, California excluding SF/SJM/LA, Kentucky, Louisiana and New Jersey). California excluding SF/SJM/LA, Kentucky, Louisiana, and New Jersey contribute cases for diagnosis years 2000-2004. The remaining 13 SEER Areas contribute cases for the entire period 1996-2004. Rates are based on follow-up of patients into 2005.  
<sup>d</sup> Period survival provides a more up-to-date estimate of survival by piecing together the most recent conditional survival estimates from several cohorts. It is computed here using three calendar year blocks (2002-2004: 0-1 year survival), (2001-2003: 1-2 year survival), (2000-2002: 2-3 year survival), (1999-2001: 3-4 year survival), (1998-2000: 4-5 years survival).  
<sup>e</sup> The difference in rates between 1975-1977 and 1996-2004 is statistically significant (p<.05).  
<sup>f</sup> The standard error of the survival rate is between 5 and 10 percentage points.  
<sup>g</sup> The standard error of the survival rate is greater than 10 percentage points.  
- Statistic could not be calculated due to fewer than 16 cases during the time period.

Table VIII-6  
ESOPHAGUS CANCER (Invasive)

SURVIVAL RATES<sup>a</sup>

By Year of Diagnosis

All Races, Males and Females

Year of Diagnosis

|  | 1975-<br>1979 | 1980-<br>1984 | 1985 | 1986 | 1987 | 1988 | 1989 | 1990 | 1991 | 1992 | 1993 | 1994 | 1995 | 1996 | 1997 | 1998 | 1999 | 2000 | 2001 | 2002 | 2003 | 2004 |
|--|---------------|---------------|------|------|------|------|------|------|------|------|------|------|------|------|------|------|------|------|------|------|------|------|
| Relative Survival Rates (SEER <sup>b</sup> ) |               |               |      |      |      |      |      |      |      |      |      |      |      |      |      |      |      |      |      |      |      |      |
| 1-year                                       | 27.5          | 31.4          | 35.9 | 35.0 | 35.8 | 36.3 | 38.7 | 39.4 | 41.7 | 42.0 | 38.4 | 38.8 | 41.6 | 43.6 | 41.6 | 41.8 | 44.8 | 47.6 | 47.8 | 42.9 | 48.6 | 49.1 |
| 2-year                                       | 11.7          | 14.6          | 20.7 | 19.1 | 18.2 | 20.4 | 20.2 | 20.6 | 21.4 | 24.8 | 22.6 | 23.3 | 24.0 | 24.5 | 24.1 | 24.5 | 27.0 | 29.0 | 30.0 | 26.2 | 31.4 |      |
| 3-year                                       | 7.8           | 10.3          | 13.4 | 14.4 | 12.0 | 14.0 | 14.5 | 14.8 | 15.3 | 19.8 | 16.4 | 18.4 | 17.7 | 18.9 | 17.7 | 18.9 | 20.9 | 24.3 | 23.5 | 21.0 |      |      |
| 4-year                                       | 6.0           | 8.5           | 10.1 | 11.8 | 9.5  | 12.1 | 11.7 | 11.9 | 13.1 | 17.1 | 14.1 | 15.3 | 13.8 | 16.2 | 14.5 | 14.7 | 18.5 | 21.1 | 19.5 |      |      |      |
| 5-year                                       | 5.0           | 7.2           | 9.0  | 10.5 | 8.9  | 10.0 | 10.3 | 10.4 | 12.2 | 15.4 | 12.5 | 13.5 | 12.1 | 15.5 | 12.8 | 13.1 | 17.5 | 19.6 |      |      |      |      |
| 6-year                                       | 4.4           | 6.4           | 7.5  | 9.4  | 7.9  | 9.2  | 9.1  | 10.0 | 10.7 | 14.4 | 11.3 | 12.3 | 11.4 | 14.4 | 11.7 | 12.3 | 16.0 |      |      |      |      |      |
| 7-year                                       | 4.0           | 5.8           | 7.1  | 8.7  | 7.1  | 8.7  | 8.4  | 9.0  | 10.2 | 13.0 | 10.6 | 11.3 | 10.9 | 13.6 | 11.3 | 12.0 |      |      |      |      |      |      |
| 8-year                                       | 3.5           | 5.2           | 6.3  | 7.9  | 6.2  | 8.2  | 8.3  | 8.6  | 9.0  | 12.4 | 10.2 | 10.7 | 10.8 | 13.0 | 10.5 |      |      |      |      |      |      |      |
| 9-year                                       | 3.3           | 4.8           | 5.9  | 7.7  | 5.5  | 7.0  | 7.6  | 7.9  | 8.9  | 11.8 | 9.3  | 10.5 | 9.9  | 12.5 |      |      |      |      |      |      |      |      |
| 10-year                                      | 3.0           | 4.6           | 5.8  | 6.8  | 5.4  | 6.5  | 6.9  | 7.5  | 8.6  | 10.7 | 8.9  | 9.2  | 9.5  |      |      |      |      |      |      |      |      |      |
| 11-year                                      | 2.9           | 4.3           | 5.4  | 6.3  | 5.4  | 6.0  | 5.8  | 7.4  | 8.6  | 9.5  | 8.0  | 8.9  |      |      |      |      |      |      |      |      |      |      |
| 12-year                                      | 2.7           | 4.2           | 4.6  | 6.0  | 5.4  | 5.6  | 4.7  | 5.6  | 8.0  | 8.7  | 8.0  |      |      |      |      |      |      |      |      |      |      |      |
| 13-year                                      | 2.6           | 4.0           | 4.6  | 5.7  | 4.1  | 5.6  | 4.5  | 5.6  | 8.0  | 7.8  |      |      |      |      |      |      |      |      |      |      |      |      |
| 14-year                                      | 2.6           | 3.9           | 4.6  | 5.7  | 3.9  | 5.1  | 4.0  | 5.6  | 7.6  |      |      |      |      |      |      |      |      |      |      |      |      |      |
| 15-year                                      | 2.6           | 3.9           | 4.6  | 5.5  | 3.8  | 4.6  | 3.8  | 5.6  |      |      |      |      |      |      |      |      |      |      |      |      |      |      |
| 16-year                                      | 2.6           | 3.8           | 4.6  | 4.3  | 3.6  | 4.3  | 3.6  |      |      |      |      |      |      |      |      |      |      |      |      |      |      |      |
| 17-year                                      | 2.6           | 3.5           | 4.0  | 3.7  | 3.6  | 3.6  |      |      |      |      |      |      |      |      |      |      |      |      |      |      |      |      |
| 18-year                                      | 2.5           | 3.2           | 4.0  | 3.7  | 3.4  |      |      |      |      |      |      |      |      |      |      |      |      |      |      |      |      |      |
| 19-year                                      | 2.5           | 3.0           | 3.7  | 3.7  |      |      |      |      |      |      |      |      |      |      |      |      |      |      |      |      |      |      |
| 20-year                                      | 2.4           | 2.9           | 3.0  |      |      |      |      |      |      |      |      |      |      |      |      |      |      |      |      |      |      |      |

<sup>a</sup>

Survival rates are relative rates expressed as percents.

<sup>b</sup>

Rates are from the SEER 9 areas (San Francisco, Connecticut, Detroit, Hawaii, Iowa, New Mexico, Seattle, Utah, and Atlanta).

Table VIII-7  
ESOPHAGUS CANCER (Invasive)

SURVIVAL RATES<sup>a</sup>

By Year of Diagnosis

All Races, Males

Year of Diagnosis

|  | 1975-<br>1979 | 1980-<br>1984 | 1985 | 1986 | 1987 | 1988 | 1989 | 1990 | 1991 | 1992 | 1993 | 1994 | 1995 | 1996 | 1997 | 1998 | 1999 | 2000 | 2001 | 2002 | 2003 | 2004 |
|--|---------------|---------------|------|------|------|------|------|------|------|------|------|------|------|------|------|------|------|------|------|------|------|------|
| Relative Survival Rates (SEER <sup>b</sup> ) |               |               |      |      |      |      |      |      |      |      |      |      |      |      |      |      |      |      |      |      |      |      |
| 1-year                                       | 25.3          | 30.7          | 34.8 | 34.2 | 34.1 | 34.4 | 38.3 | 41.4 | 41.3 | 41.4 | 39.6 | 38.3 | 41.2 | 44.9 | 41.9 | 41.9 | 44.4 | 48.8 | 49.0 | 44.3 | 48.2 | 48.0 |
| 2-year                                       | 10.3          | 14.1          | 19.5 | 19.7 | 17.2 | 19.2 | 19.6 | 21.5 | 21.0 | 24.7 | 22.3 | 22.0 | 24.3 | 25.1 | 24.7 | 24.8 | 26.6 | 29.2 | 30.3 | 26.7 | 30.8 |      |
| 3-year                                       | 6.8           | 9.4           | 11.2 | 15.6 | 12.4 | 12.2 | 14.4 | 14.8 | 15.5 | 19.8 | 16.7 | 18.2 | 17.8 | 18.7 | 18.5 | 19.0 | 20.8 | 24.0 | 23.4 | 21.3 |      |      |
| 4-year                                       | 5.2           | 7.7           | 7.3  | 12.5 | 9.8  | 10.8 | 11.6 | 11.8 | 12.9 | 16.3 | 14.3 | 14.9 | 13.6 | 15.5 | 15.3 | 14.4 | 18.2 | 19.9 | 19.6 |      |      |      |
| 5-year                                       | 4.3           | 6.2           | 7.1  | 11.2 | 9.1  | 9.4  | 10.0 | 10.1 | 12.2 | 14.4 | 12.6 | 13.4 | 12.3 | 14.4 | 13.3 | 12.3 | 17.4 | 17.9 |      |      |      |      |
| 6-year                                       | 3.7           | 5.4           | 6.2  | 10.3 | 8.4  | 8.8  | 8.6  | 9.7  | 10.5 | 13.4 | 11.5 | 12.0 | 11.6 | 13.6 | 12.1 | 11.7 | 16.3 |      |      |      |      |      |
| 7-year                                       | 3.4           | 4.8           | 5.7  | 9.4  | 7.2  | 8.5  | 7.8  | 8.7  | 10.5 | 12.1 | 11.2 | 11.2 | 11.3 | 12.7 | 11.9 | 11.4 |      |      |      |      |      |      |
| 8-year                                       | 3.1           | 4.3           | 5.0  | 8.2  | 6.4  | 8.1  | 7.6  | 8.0  | 8.9  | 11.5 | 10.8 | 10.3 | 11.0 | 12.3 | 10.9 |      |      |      |      |      |      |      |
| 9-year                                       | 2.9           | 4.0           | 4.9  | 8.1  | 6.0  | 6.7  | 7.4  | 7.3  | 8.7  | 11.1 | 9.7  | 9.9  | 10.6 | 11.8 |      |      |      |      |      |      |      |      |
| 10-year                                      | 2.8           | 3.8           | 4.8  | 7.7  | 6.0  | 6.2  | 7.1  | 6.9  | 8.3  | 9.7  | 8.9  | 8.9  | 10.1 |      |      |      |      |      |      |      |      |      |
| 11-year                                      | 2.6           | 3.7           | 4.8  | 7.0  | 6.0  | 5.7  | 6.3  | 6.8  | 8.3  | 8.2  | 8.3  | 8.9  |      |      |      |      |      |      |      |      |      |      |
| 12-year                                      | 2.5           | 3.6           | 3.6  | 6.4  | 6.0  | 5.0  | 5.4  | 5.4  | 7.4  | 7.5  | 8.3  |      |      |      |      |      |      |      |      |      |      |      |
| 13-year                                      | 2.4           | 3.6           | 3.6  | 5.9  | 4.4  | 5.0  | 4.9  | 5.4  | 7.4  | 7.5  |      |      |      |      |      |      |      |      |      |      |      |      |
| 14-year                                      | 2.4           | 3.5           | 3.6  | 5.9  | 3.9  | 4.3  | 4.1  | 5.4  | 7.4  |      |      |      |      |      |      |      |      |      |      |      |      |      |
| 15-year                                      | 2.4           | 3.5           | 3.6  | 5.7  | 3.7  | 3.5  | 4.1  | 5.4  |      |      |      |      |      |      |      |      |      |      |      |      |      |      |
| 16-year                                      | 2.4           | 3.5           | 3.6  | 4.6  | 3.4  | 3.0  | 3.8  |      |      |      |      |      |      |      |      |      |      |      |      |      |      |      |
| 17-year                                      | 2.4           | 3.5           | 2.4  | 3.6  | 3.2  | 2.6  |      |      |      |      |      |      |      |      |      |      |      |      |      |      |      |      |
| 18-year                                      | 2.4           | 3.2           | 2.4  | 3.5  | 3.2  |      |      |      |      |      |      |      |      |      |      |      |      |      |      |      |      |      |
| 19-year                                      | 2.4           | 3.1           | 1.7  | 3.5  |      |      |      |      |      |      |      |      |      |      |      |      |      |      |      |      |      |      |
| 20-year                                      | 2.4           | 3.0           | 1.7  |      |      |      |      |      |      |      |      |      |      |      |      |      |      |      |      |      |      |      |

<sup>a</sup> Survival rates are relative rates expressed as percents.

<sup>b</sup> Rates are from the SEER 9 areas (San Francisco, Connecticut, Detroit, Hawaii, Iowa, New Mexico, Seattle, Utah, and Atlanta).



Table VIII-8  
ESOPHAGUS CANCER (Invasive)

SURVIVAL RATES<sup>a</sup>

By Year of Diagnosis

All Races, Females

Year of Diagnosis

|  | 1975-<br>1979 | 1980-<br>1984 | 1985 | 1986 | 1987 | 1988 | 1989 | 1990 | 1991 | 1992 | 1993 | 1994 | 1995 | 1996 | 1997 | 1998 | 1999 | 2000 | 2001 | 2002 | 2003 | 2004 |
|--|---------------|---------------|------|------|------|------|------|------|------|------|------|------|------|------|------|------|------|------|------|------|------|------|
| Relative Survival Rates (SEER <sup>b</sup> ) |               |               |      |      |      |      |      |      |      |      |      |      |      |      |      |      |      |      |      |      |      |      |
| 1-year                                       | 33.3          | 33.3          | 39.1 | 37.0 | 40.1 | 41.4 | 39.8 | 33.0 | 42.6 | 43.9 | 35.4 | 40.5 | 42.9 | 39.8 | 40.7 | 41.5 | 46.5 | 43.9 | 43.2 | 38.5 | 50.0 | 52.8 |
| 2-year                                       | 15.2          | 16.0          | 23.9 | 17.8 | 20.6 | 23.7 | 21.7 | 17.9 | 22.1 | 25.2 | 23.3 | 27.6 | 22.9 | 22.6 | 22.3 | 23.4 | 28.5 | 28.1 | 28.5 | 24.4 | 33.7 |      |
| 3-year                                       | 10.2          | 12.2          | 19.1 | 11.6 | 11.0 | 18.6 | 14.6 | 14.7 | 14.9 | 19.7 | 15.4 | 19.0 | 17.3 | 19.7 | 15.5 | 18.7 | 21.1 | 25.1 | 23.9 | 19.7 |      |      |
| 4-year                                       | 8.0           | 10.6          | 17.6 | 10.1 | 8.8  | 15.4 | 11.9 | 12.0 | 13.7 | 19.3 | 13.5 | 16.0 | 14.2 | 18.1 | 12.2 | 15.7 | 19.3 | 24.5 | 19.3 |      |      |      |
| 5-year                                       | 6.6           | 9.5           | 14.0 | 8.8  | 8.0  | 11.4 | 10.7 | 11.1 | 12.3 | 18.1 | 12.3 | 13.6 | 11.2 | 18.1 | 11.1 | 15.6 | 17.8 | 24.5 |      |      |      |      |
| 6-year                                       | 6.1           | 8.7           | 11.0 | 7.1  | 6.6  | 10.2 | 10.5 | 10.7 | 11.1 | 17.9 | 10.7 | 13.0 | 10.7 | 16.7 | 10.3 | 14.1 | 14.9 |      |      |      |      |      |
| 7-year                                       | 5.3           | 8.4           | 10.7 | 6.9  | 6.6  | 9.3  | 9.7  | 9.9  | 9.5  | 15.9 | 8.8  | 11.6 | 9.8  | 16.1 | 9.2  | 13.7 |      |      |      |      |      |      |
| 8-year                                       | 4.5           | 7.5           | 9.2  | 6.9  | 5.3  | 8.5  | 9.7  | 9.9  | 9.2  | 15.8 | 8.5  | 11.2 | 9.8  | 15.1 | 8.8  |      |      |      |      |      |      |      |
| 9-year                                       | 4.2           | 6.7           | 8.3  | 6.6  | 4.2  | 7.4  | 8.2  | 9.3  | 9.2  | 14.1 | 8.3  | 11.2 | 7.9  | 14.6 |      |      |      |      |      |      |      |      |
| 10-year                                      | 3.6           | 6.6           | 8.0  | 4.6  | 3.6  | 7.2  | 6.2  | 8.9  | 9.2  | 13.8 | 8.3  | 9.7  | 7.5  |      |      |      |      |      |      |      |      |      |
| 11-year                                      | 3.4           | 5.6           | 6.8  | 4.6  | 3.6  | 6.8  | 4.6  | 8.9  | 9.2  | 13.7 | 7.2  | 8.6  |      |      |      |      |      |      |      |      |      |      |
| 12-year                                      | 3.2           | 5.3           | 6.8  | 4.6  | 3.6  | 6.8  | 3.1  | 6.4  | 9.1  | 12.7 | 6.6  |      |      |      |      |      |      |      |      |      |      |      |
| 13-year                                      | 2.9           | 4.9           | 6.8  | 4.6  | 3.5  | 6.8  | 3.1  | 5.9  | 8.9  | 8.4  |      |      |      |      |      |      |      |      |      |      |      |      |
| 14-year                                      | 2.9           | 4.7           | 6.8  | 4.6  | 3.5  | 6.8  | 3.1  | 5.9  | 7.3  |      |      |      |      |      |      |      |      |      |      |      |      |      |
| 15-year                                      | 2.9           | 4.7           | 6.8  | 4.6  | 3.5  | 6.8  | 2.8  | 5.9  |      |      |      |      |      |      |      |      |      |      |      |      |      |      |
| 16-year                                      | 2.8           | 4.0           | 6.8  | 3.6  | 3.5  | 6.8  | 2.8  |      |      |      |      |      |      |      |      |      |      |      |      |      |      |      |
| 17-year                                      | 2.5           | 3.2           | 6.8  | 3.6  | 3.5  | 6.3  |      |      |      |      |      |      |      |      |      |      |      |      |      |      |      |      |
| 18-year                                      | 2.3           | 3.1           | 6.8  | 3.6  | 3.5  |      |      |      |      |      |      |      |      |      |      |      |      |      |      |      |      |      |
| 19-year                                      | 2.3           | 2.8           | 6.8  | 3.6  |      |      |      |      |      |      |      |      |      |      |      |      |      |      |      |      |      |      |
| 20-year                                      | 2.3           | 2.7           | 5.6  |      |      |      |      |      |      |      |      |      |      |      |      |      |      |      |      |      |      |      |

<sup>a</sup>

Survival rates are relative rates expressed as percents.

<sup>b</sup>

Rates are from the SEER 9 areas (San Francisco, Connecticut, Detroit, Hawaii, Iowa, New Mexico, Seattle, Utah, and Atlanta).

Table VIII-9  
ESOPHAGUS CANCER (Invasive)

Risk of Being Diagnosed With Cancer in 10, 20 and 30 Years, Lifetime Risk of Being Diagnosed with Cancer, and  
 Lifetime Risk of Dying from Cancer Given Cancer Free At Current Age  
 Both Sexes, 2003-2005 By Race/Ethnicity

| Race/<br>Ethnicity | Current<br>Age      | Risk of Being Diagnosed with Cancer |                                 |                                 |                                    |                                    |  | Risk of Dying from Cancer |  |
|--------------------|---------------------|-------------------------------------|---------------------------------|---------------------------------|------------------------------------|------------------------------------|--|---------------------------|--|
|                    |                     | +10 yrs<br>Percent ( 95% C.I. )     | +20 yrs<br>Percent ( 95% C.I. ) | +30 yrs<br>Percent ( 95% C.I. ) | Eventually<br>Percent ( 95% C.I. ) | Eventually<br>Percent ( 95% C.I. ) |  |                           |  |
| All Races          | 0                   | 0.00 ( 0.00, 0.00 )                 | 0.00 ( 0.00, 0.00 )             | 0.00 ( 0.00, 0.00 )             | 0.50 ( 0.49, 0.51 )                | 0.48 ( 0.48, 0.49 )                |  |                           |  |
|                    | 10                  | 0.00 ( 0.00, 0.00 )                 | 0.00 ( 0.00, 0.00 )             | 0.00 ( 0.00, 0.00 )             | 0.51 ( 0.50, 0.52 )                | 0.49 ( 0.48, 0.49 )                |  |                           |  |
|                    | 20                  | 0.00 ( 0.00, 0.00 )                 | 0.00 ( 0.00, 0.00 )             | 0.02 ( 0.02, 0.02 )             | 0.51 ( 0.50, 0.52 )                | 0.49 ( 0.49, 0.50 )                |  |                           |  |
|                    | 30                  | 0.00 ( 0.00, 0.00 )                 | 0.02 ( 0.02, 0.02 )             | 0.09 ( 0.09, 0.09 )             | 0.52 ( 0.51, 0.53 )                | 0.49 ( 0.49, 0.50 )                |  |                           |  |
|                    | 40                  | 0.02 ( 0.02, 0.02 )                 | 0.09 ( 0.08, 0.09 )             | 0.23 ( 0.22, 0.23 )             | 0.52 ( 0.51, 0.53 )                | 0.50 ( 0.49, 0.50 )                |  |                           |  |
|                    | 50                  | 0.07 ( 0.07, 0.07 )                 | 0.21 ( 0.21, 0.22 )             | 0.39 ( 0.38, 0.40 )             | 0.52 ( 0.50, 0.53 )                | 0.50 ( 0.49, 0.50 )                |  |                           |  |
|                    | 60                  | 0.15 ( 0.15, 0.16 )                 | 0.34 ( 0.33, 0.35 )             | 0.45 ( 0.44, 0.46 )             | 0.47 ( 0.46, 0.49 )                | 0.46 ( 0.45, 0.46 )                |  |                           |  |
|                    | 70                  | 0.21 ( 0.21, 0.22 )                 | 0.34 ( 0.33, 0.35 )             | - ( - , - )                     | 0.37 ( 0.36, 0.38 )                | 0.37 ( 0.36, 0.37 )                |  |                           |  |
| 80                 | 0.18 ( 0.17, 0.19 ) | - ( - , - )                         | - ( - , - )                     | 0.22 ( 0.21, 0.23 )             | 0.23 ( 0.23, 0.24 )                |                                    |  |                           |  |
| White              | 0                   | 0.00 ( 0.00, 0.00 )                 | 0.00 ( 0.00, 0.00 )             | 0.00 ( 0.00, 0.00 )             | 0.52 ( 0.51, 0.53 )                | 0.49 ( 0.48, 0.49 )                |  |                           |  |
|                    | 10                  | 0.00 ( 0.00, 0.00 )                 | 0.00 ( 0.00, 0.00 )             | 0.00 ( 0.00, 0.00 )             | 0.52 ( 0.51, 0.54 )                | 0.49 ( 0.49, 0.50 )                |  |                           |  |
|                    | 20                  | 0.00 ( 0.00, 0.00 )                 | 0.00 ( 0.00, 0.00 )             | 0.02 ( 0.02, 0.02 )             | 0.53 ( 0.52, 0.54 )                | 0.50 ( 0.49, 0.50 )                |  |                           |  |
|                    | 30                  | 0.00 ( 0.00, 0.00 )                 | 0.02 ( 0.02, 0.02 )             | 0.09 ( 0.09, 0.09 )             | 0.53 ( 0.52, 0.54 )                | 0.50 ( 0.50, 0.51 )                |  |                           |  |
|                    | 40                  | 0.02 ( 0.02, 0.02 )                 | 0.09 ( 0.08, 0.09 )             | 0.23 ( 0.22, 0.24 )             | 0.53 ( 0.52, 0.55 )                | 0.50 ( 0.50, 0.51 )                |  |                           |  |
|                    | 50                  | 0.07 ( 0.07, 0.07 )                 | 0.22 ( 0.21, 0.22 )             | 0.40 ( 0.39, 0.41 )             | 0.53 ( 0.52, 0.54 )                | 0.50 ( 0.50, 0.51 )                |  |                           |  |
|                    | 60                  | 0.16 ( 0.15, 0.16 )                 | 0.35 ( 0.34, 0.36 )             | 0.46 ( 0.45, 0.47 )             | 0.49 ( 0.47, 0.50 )                | 0.46 ( 0.46, 0.47 )                |  |                           |  |
|                    | 70                  | 0.22 ( 0.21, 0.23 )                 | 0.35 ( 0.34, 0.36 )             | - ( - , - )                     | 0.38 ( 0.37, 0.39 )                | 0.37 ( 0.37, 0.38 )                |  |                           |  |
| 80                 | 0.18 ( 0.18, 0.19 ) | - ( - , - )                         | - ( - , - )                     | 0.23 ( 0.22, 0.24 )             | 0.24 ( 0.23, 0.24 )                |                                    |  |                           |  |
| Black              | 0                   | 0.00 ( 0.00, 0.00 )                 | 0.00 ( 0.00, 0.00 )             | 0.00 ( 0.00, 0.00 )             | 0.49 ( 0.46, 0.53 )                | 0.48 ( 0.47, 0.50 )                |  |                           |  |
|                    | 10                  | 0.00 ( 0.00, 0.00 )                 | 0.00 ( 0.00, 0.00 )             | 0.00 ( 0.00, 0.00 )             | 0.51 ( 0.47, 0.54 )                | 0.50 ( 0.48, 0.51 )                |  |                           |  |
|                    | 20                  | 0.00 ( 0.00, 0.00 )                 | 0.00 ( 0.00, 0.00 )             | 0.03 ( 0.02, 0.03 )             | 0.51 ( 0.48, 0.54 )                | 0.50 ( 0.48, 0.51 )                |  |                           |  |
|                    | 30                  | 0.00 ( 0.00, 0.00 )                 | 0.03 ( 0.02, 0.03 )             | 0.12 ( 0.11, 0.14 )             | 0.52 ( 0.49, 0.55 )                | 0.51 ( 0.49, 0.52 )                |  |                           |  |
|                    | 40                  | 0.03 ( 0.02, 0.03 )                 | 0.13 ( 0.11, 0.14 )             | 0.30 ( 0.27, 0.32 )             | 0.53 ( 0.50, 0.56 )                | 0.52 ( 0.50, 0.53 )                |  |                           |  |
|                    | 50                  | 0.10 ( 0.09, 0.12 )                 | 0.28 ( 0.26, 0.31 )             | 0.44 ( 0.41, 0.47 )             | 0.53 ( 0.49, 0.57 )                | 0.52 ( 0.50, 0.53 )                |  |                           |  |
|                    | 60                  | 0.20 ( 0.18, 0.22 )                 | 0.38 ( 0.35, 0.41 )             | 0.46 ( 0.43, 0.50 )             | 0.48 ( 0.44, 0.52 )                | 0.47 ( 0.45, 0.49 )                |  |                           |  |
|                    | 70                  | 0.22 ( 0.20, 0.25 )                 | 0.32 ( 0.29, 0.36 )             | - ( - , - )                     | 0.34 ( 0.31, 0.38 )                | 0.35 ( 0.33, 0.37 )                |  |                           |  |
| 80                 | 0.16 ( 0.13, 0.19 ) | - ( - , - )                         | - ( - , - )                     | 0.19 ( 0.16, 0.23 )             | 0.21 ( 0.19, 0.22 )                |                                    |  |                           |  |

Devcan Version 7.0.0, April 2008, National Cancer Institute (<http://srab.cancer.gov/devcan/>).

Source: Incidence data are from the SEER 17 areas (San Francisco, Connecticut, Detroit, Hawaii, Iowa, New Mexico, Seattle, Utah, Atlanta, San Jose-Monterey, Los Angeles, Alaska Native Registry, Rural Georgia, California excluding SF/SJM/LA, Kentucky, Louisiana and New Jersey). Mortality data are from the NCHS public use data file for the total US.

- Statistic could not be calculated.

A percent or confidence interval value of 0.00 represents a value that is below 0.005.

Table VIII-9 - continued  
ESOPHAGUS CANCER (Invasive)

Risk of Being Diagnosed With Cancer in 10, 20 and 30 Years, Lifetime Risk of Being Diagnosed with Cancer, and  
 Lifetime Risk of Dying from Cancer Given Cancer Free At Current Age  
 Both Sexes, 2003-2005 By Race/Ethnicity

| Race/<br>Ethnicity                                   | Current<br>Age      | Risk of Being Diagnosed with Cancer |                                 |                                 |                                    | Risk of Dying from Cancer          |  |
|--|---------------------|-------------------------------------|---------------------------------|---------------------------------|------------------------------------|------------------------------------|--|
|  |                     | +10 yrs<br>Percent ( 95% C.I. )     | +20 yrs<br>Percent ( 95% C.I. ) | +30 yrs<br>Percent ( 95% C.I. ) | Eventually<br>Percent ( 95% C.I. ) | Eventually<br>Percent ( 95% C.I. ) |  |
| Asian/<br>Pacific<br>Islander                        | 0                   | 0.00 ( 0.00, 0.00 )                 | 0.00 ( 0.00, 0.00 )             | 0.00 ( 0.00, 0.00 )             | 0.35 ( 0.31, 0.40 )                | 0.30 ( 0.27, 0.35 )                |  |
|  | 10                  | 0.00 ( 0.00, 0.00 )                 | 0.00 ( 0.00, 0.00 )             | 0.00 ( 0.00, 0.00 )             | 0.35 ( 0.31, 0.40 )                | 0.31 ( 0.27, 0.36 )                |  |
|  | 20                  | 0.00 ( 0.00, 0.00 )                 | 0.00 ( 0.00, 0.00 )             | 0.01 ( 0.01, 0.01 )             | 0.35 ( 0.31, 0.40 )                | 0.31 ( 0.27, 0.36 )                |  |
|  | 30                  | 0.00 ( 0.00, 0.00 )                 | 0.01 ( 0.01, 0.01 )             | 0.04 ( 0.03, 0.05 )             | 0.35 ( 0.31, 0.40 )                | 0.31 ( 0.27, 0.36 )                |  |
|  | 40                  | 0.01 ( 0.00, 0.01 )                 | 0.04 ( 0.03, 0.04 )             | 0.10 ( 0.09, 0.12 )             | 0.35 ( 0.31, 0.40 )                | 0.31 ( 0.27, 0.36 )                |  |
|  | 50                  | 0.03 ( 0.02, 0.04 )                 | 0.10 ( 0.08, 0.11 )             | 0.19 ( 0.17, 0.22 )             | 0.35 ( 0.31, 0.40 )                | 0.31 ( 0.27, 0.36 )                |  |
|  | 60                  | 0.07 ( 0.06, 0.08 )                 | 0.17 ( 0.15, 0.19 )             | 0.29 ( 0.26, 0.33 )             | 0.33 ( 0.29, 0.38 )                | 0.30 ( 0.26, 0.35 )                |  |
|  | 70                  | 0.11 ( 0.09, 0.13 )                 | 0.24 ( 0.21, 0.28 )             | - ( - , - )                     | 0.29 ( 0.24, 0.34 )                | 0.26 ( 0.22, 0.32 )                |  |
| 80   | 0.17 ( 0.14, 0.20 ) | - ( - , - )                         | - ( - , - )                     | 0.22 ( 0.17, 0.28 )             | 0.21 ( 0.17, 0.28 )                |                                    |  |
| American<br>Indian/<br>Alaska<br>Native <sup>a</sup> | 0                   | 0.00 ( 0.00, 0.02 )                 | 0.00 ( 0.00, 0.02 )             | 0.00 ( 0.00, 0.02 )             | 0.37 ( 0.26, 0.67 )                | 0.40 ( 0.33, 0.52 )                |  |
|  | 10                  | 0.00 ( 0.00, 0.01 )                 | 0.00 ( 0.00, 0.01 )             | 0.00 ( 0.00, 0.01 )             | 0.38 ( 0.26, 0.69 )                | 0.41 ( 0.34, 0.53 )                |  |
|  | 20                  | 0.00 ( 0.00, 0.01 )                 | 0.00 ( 0.00, 0.01 )             | 0.02 ( 0.01, 0.04 )             | 0.38 ( 0.26, 0.69 )                | 0.41 ( 0.34, 0.53 )                |  |
|  | 30                  | 0.00 ( 0.00, 0.01 )                 | 0.02 ( 0.01, 0.04 )             | 0.07 ( 0.04, 0.11 )             | 0.39 ( 0.27, 0.70 )                | 0.42 ( 0.35, 0.54 )                |  |
|  | 40                  | 0.02 ( 0.01, 0.04 )                 | 0.07 ( 0.04, 0.11 )             | 0.19 ( 0.13, 0.28 )             | 0.40 ( 0.27, 0.72 )                | 0.43 ( 0.35, 0.56 )                |  |
|  | 50                  | 0.05 ( 0.03, 0.09 )                 | 0.18 ( 0.12, 0.27 )             | 0.31 ( 0.21, 0.45 )             | 0.39 ( 0.27, 0.73 )                | 0.44 ( 0.35, 0.56 )                |  |
|  | 60                  | 0.14 ( 0.08, 0.22 )                 | 0.28 ( 0.18, 0.42 )             | 0.36 ( 0.23, 0.55 )             | 0.37 ( 0.24, 0.73 )                | 0.42 ( 0.33, 0.56 )                |  |
|  | 70                  | 0.16 ( 0.09, 0.29 )                 | 0.26 ( 0.14, 0.46 )             | - ( - , - )                     | 0.27 ( 0.15, 0.68 )                | 0.32 ( 0.24, 0.48 )                |  |
| 80   | 0.14 ( 0.04, 0.37 ) | - ( - , - )                         | - ( - , - )                     | 0.15 ( 0.04, 0.72 )             | 0.21 ( 0.13, 0.42 )                |                                    |  |
| Hispanic <sup>b</sup>                                | 0                   | 0.00 ( 0.00, 0.00 )                 | 0.00 ( 0.00, 0.00 )             | 0.00 ( 0.00, 0.00 )             | 0.40 ( 0.36, 0.45 )                | 0.31 ( 0.29, 0.33 )                |  |
|  | 10                  | 0.00 ( 0.00, 0.00 )                 | 0.00 ( 0.00, 0.00 )             | 0.00 ( 0.00, 0.00 )             | 0.41 ( 0.37, 0.45 )                | 0.31 ( 0.29, 0.33 )                |  |
|  | 20                  | 0.00 ( 0.00, 0.00 )                 | 0.00 ( 0.00, 0.00 )             | 0.01 ( 0.01, 0.02 )             | 0.41 ( 0.37, 0.45 )                | 0.31 ( 0.29, 0.34 )                |  |
|  | 30                  | 0.00 ( 0.00, 0.00 )                 | 0.01 ( 0.01, 0.02 )             | 0.05 ( 0.04, 0.06 )             | 0.41 ( 0.37, 0.45 )                | 0.31 ( 0.29, 0.34 )                |  |
|  | 40                  | 0.01 ( 0.01, 0.01 )                 | 0.05 ( 0.04, 0.05 )             | 0.13 ( 0.12, 0.15 )             | 0.41 ( 0.37, 0.46 )                | 0.32 ( 0.30, 0.34 )                |  |
|  | 50                  | 0.04 ( 0.03, 0.04 )                 | 0.12 ( 0.11, 0.14 )             | 0.26 ( 0.24, 0.28 )             | 0.41 ( 0.37, 0.46 )                | 0.32 ( 0.30, 0.34 )                |  |
|  | 60                  | 0.09 ( 0.08, 0.11 )                 | 0.23 ( 0.21, 0.26 )             | 0.35 ( 0.32, 0.39 )             | 0.39 ( 0.35, 0.44 )                | 0.30 ( 0.28, 0.33 )                |  |
|  | 70                  | 0.16 ( 0.14, 0.18 )                 | 0.29 ( 0.26, 0.33 )             | - ( - , - )                     | 0.33 ( 0.29, 0.39 )                | 0.26 ( 0.23, 0.28 )                |  |
| 80   | 0.18 ( 0.15, 0.21 ) | - ( - , - )                         | - ( - , - )                     | 0.23 ( 0.19, 0.29 )             | 0.19 ( 0.16, 0.22 )                |                                    |  |

Devcan Version 7.0.0, April 2008, National Cancer Institute (<http://srab.cancer.gov/devcan/>).

Source: Incidence data are from the SEER 17 areas (San Francisco, Connecticut, Detroit, Hawaii, Iowa, New Mexico, Seattle, Utah, Atlanta, San Jose-Monterey, Los Angeles, Alaska Native Registry, Rural Georgia, California excluding SF/SJM/LA, Kentucky, Louisiana and New Jersey). Mortality data are from the NCHS public use data file for the total US.

<sup>a</sup> Underlying incidence and mortality data for American Indian/Alaska Native are based on the CHSDA (Contract Health Service Delivery Area) counties.

<sup>b</sup> Hispanic is not mutually exclusive from whites, blacks, Asian/Pacific Islanders, and American Indians/Alaska Natives. Underlying incidence data for Hispanics are based on NHIA and exclude cases from the Alaska Native Registry and Kentucky. Underlying mortality data for Hispanics exclude deaths from Minnesota, New Hampshire and North Dakota.

- Statistic could not be calculated.

A percent or confidence interval value of 0.00 represents a value that is below 0.005.

Table VIII-9 - continued  
ESOPHAGUS CANCER (Invasive)

Risk of Being Diagnosed With Cancer in 10, 20 and 30 Years, Lifetime Risk of Being Diagnosed with Cancer, and  
 Lifetime Risk of Dying from Cancer Given Cancer Free At Current Age  
 Males, 2003-2005 By Race/Ethnicity

| Race/<br>Ethnicity | Current<br>Age      | Risk of Being Diagnosed with Cancer |                                 |                                 |                                    | Risk of Dying from Cancer          |  |
|--------------------|---------------------|-------------------------------------|---------------------------------|---------------------------------|------------------------------------|------------------------------------|--|
|                    |                     | +10 yrs<br>Percent ( 95% C.I. )     | +20 yrs<br>Percent ( 95% C.I. ) | +30 yrs<br>Percent ( 95% C.I. ) | Eventually<br>Percent ( 95% C.I. ) | Eventually<br>Percent ( 95% C.I. ) |  |
| All Races          | 0                   | 0.00 ( 0.00, 0.00 )                 | 0.00 ( 0.00, 0.00 )             | 0.00 ( 0.00, 0.00 )             | 0.78 ( 0.76, 0.80 )                | 0.77 ( 0.76, 0.78 )                |  |
|                    | 10                  | 0.00 ( 0.00, 0.00 )                 | 0.00 ( 0.00, 0.00 )             | 0.01 ( 0.00, 0.01 )             | 0.79 ( 0.77, 0.81 )                | 0.78 ( 0.77, 0.79 )                |  |
|                    | 20                  | 0.00 ( 0.00, 0.00 )                 | 0.01 ( 0.00, 0.01 )             | 0.04 ( 0.03, 0.04 )             | 0.80 ( 0.78, 0.82 )                | 0.78 ( 0.77, 0.79 )                |  |
|                    | 30                  | 0.00 ( 0.00, 0.01 )                 | 0.04 ( 0.03, 0.04 )             | 0.15 ( 0.14, 0.15 )             | 0.81 ( 0.79, 0.83 )                | 0.79 ( 0.78, 0.80 )                |  |
|                    | 40                  | 0.03 ( 0.03, 0.03 )                 | 0.14 ( 0.14, 0.15 )             | 0.37 ( 0.36, 0.39 )             | 0.82 ( 0.80, 0.84 )                | 0.80 ( 0.79, 0.81 )                |  |
|                    | 50                  | 0.12 ( 0.11, 0.12 )                 | 0.36 ( 0.34, 0.37 )             | 0.63 ( 0.61, 0.64 )             | 0.81 ( 0.79, 0.83 )                | 0.80 ( 0.79, 0.81 )                |  |
|                    | 60                  | 0.26 ( 0.25, 0.27 )                 | 0.55 ( 0.53, 0.57 )             | 0.72 ( 0.70, 0.74 )             | 0.75 ( 0.73, 0.77 )                | 0.75 ( 0.74, 0.76 )                |  |
|                    | 70                  | 0.35 ( 0.34, 0.36 )                 | 0.55 ( 0.53, 0.57 )             | - ( - , - )                     | 0.59 ( 0.57, 0.61 )                | 0.61 ( 0.60, 0.62 )                |  |
| 80                 | 0.31 ( 0.29, 0.32 ) | - ( - , - )                         | - ( - , - )                     | 0.36 ( 0.34, 0.39 )             | 0.39 ( 0.38, 0.40 )                |                                    |  |
| White              | 0                   | 0.00 ( 0.00, 0.00 )                 | 0.00 ( 0.00, 0.00 )             | 0.00 ( 0.00, 0.00 )             | 0.81 ( 0.79, 0.83 )                | 0.78 ( 0.78, 0.79 )                |  |
|                    | 10                  | 0.00 ( 0.00, 0.00 )                 | 0.00 ( 0.00, 0.00 )             | 0.01 ( 0.00, 0.01 )             | 0.82 ( 0.80, 0.84 )                | 0.80 ( 0.79, 0.81 )                |  |
|                    | 20                  | 0.00 ( 0.00, 0.00 )                 | 0.01 ( 0.00, 0.01 )             | 0.04 ( 0.03, 0.04 )             | 0.83 ( 0.81, 0.85 )                | 0.80 ( 0.79, 0.81 )                |  |
|                    | 30                  | 0.00 ( 0.00, 0.01 )                 | 0.04 ( 0.03, 0.04 )             | 0.15 ( 0.14, 0.16 )             | 0.84 ( 0.81, 0.86 )                | 0.81 ( 0.80, 0.82 )                |  |
|                    | 40                  | 0.03 ( 0.03, 0.04 )                 | 0.15 ( 0.14, 0.16 )             | 0.39 ( 0.37, 0.40 )             | 0.84 ( 0.82, 0.87 )                | 0.82 ( 0.81, 0.83 )                |  |
|                    | 50                  | 0.12 ( 0.11, 0.13 )                 | 0.36 ( 0.35, 0.38 )             | 0.65 ( 0.63, 0.67 )             | 0.84 ( 0.82, 0.86 )                | 0.82 ( 0.81, 0.83 )                |  |
|                    | 60                  | 0.26 ( 0.25, 0.27 )                 | 0.57 ( 0.55, 0.59 )             | 0.74 ( 0.72, 0.76 )             | 0.77 ( 0.75, 0.80 )                | 0.76 ( 0.75, 0.77 )                |  |
|                    | 70                  | 0.36 ( 0.35, 0.38 )                 | 0.57 ( 0.55, 0.59 )             | - ( - , - )                     | 0.60 ( 0.58, 0.63 )                | 0.62 ( 0.61, 0.63 )                |  |
| 80                 | 0.31 ( 0.29, 0.33 ) | - ( - , - )                         | - ( - , - )                     | 0.37 ( 0.35, 0.39 )             | 0.40 ( 0.39, 0.41 )                |                                    |  |
| Black              | 0                   | 0.00 ( 0.00, 0.00 )                 | 0.00 ( 0.00, 0.00 )             | 0.00 ( 0.00, 0.00 )             | 0.71 ( 0.66, 0.77 )                | 0.72 ( 0.69, 0.74 )                |  |
|                    | 10                  | 0.00 ( 0.00, 0.00 )                 | 0.00 ( 0.00, 0.00 )             | 0.00 ( 0.00, 0.01 )             | 0.73 ( 0.67, 0.79 )                | 0.74 ( 0.71, 0.76 )                |  |
|                    | 20                  | 0.00 ( 0.00, 0.00 )                 | 0.00 ( 0.00, 0.01 )             | 0.04 ( 0.03, 0.05 )             | 0.73 ( 0.68, 0.80 )                | 0.74 ( 0.72, 0.77 )                |  |
|                    | 30                  | 0.00 ( 0.00, 0.01 )                 | 0.04 ( 0.03, 0.05 )             | 0.19 ( 0.17, 0.21 )             | 0.75 ( 0.70, 0.82 )                | 0.76 ( 0.73, 0.79 )                |  |
|                    | 40                  | 0.04 ( 0.03, 0.05 )                 | 0.19 ( 0.17, 0.21 )             | 0.45 ( 0.41, 0.50 )             | 0.77 ( 0.72, 0.84 )                | 0.78 ( 0.75, 0.81 )                |  |
|                    | 50                  | 0.16 ( 0.14, 0.18 )                 | 0.44 ( 0.40, 0.49 )             | 0.67 ( 0.61, 0.73 )             | 0.79 ( 0.72, 0.86 )                | 0.78 ( 0.76, 0.82 )                |  |
|                    | 60                  | 0.33 ( 0.29, 0.37 )                 | 0.59 ( 0.53, 0.65 )             | 0.70 ( 0.64, 0.77 )             | 0.73 ( 0.66, 0.80 )                | 0.73 ( 0.70, 0.76 )                |  |
|                    | 70                  | 0.35 ( 0.30, 0.40 )                 | 0.50 ( 0.44, 0.57 )             | - ( - , - )                     | 0.53 ( 0.47, 0.61 )                | 0.54 ( 0.51, 0.57 )                |  |
| 80                 | 0.28 ( 0.22, 0.35 ) | - ( - , - )                         | - ( - , - )                     | 0.33 ( 0.26, 0.43 )             | 0.32 ( 0.29, 0.36 )                |                                    |  |

Devcan Version 7.0.0, April 2008, National Cancer Institute (<http://srab.cancer.gov/devcan/>).

Source: Incidence data are from the SEER 17 areas (San Francisco, Connecticut, Detroit, Hawaii, Iowa, New Mexico, Seattle, Utah, Atlanta, San Jose-Monterey, Los Angeles, Alaska Native Registry, Rural Georgia, California excluding SF/SJM/LA, Kentucky, Louisiana and New Jersey). Mortality data are from the NCHS public use data file for the total US.

- Statistic could not be calculated.

A percent or confidence interval value of 0.00 represents a value that is below 0.005.

Table VIII-9 - continued  
ESOPHAGUS CANCER (Invasive)

Risk of Being Diagnosed With Cancer in 10, 20 and 30 Years, Lifetime Risk of Being Diagnosed with Cancer, and  
 Lifetime Risk of Dying from Cancer Given Cancer Free At Current Age  
 Males, 2003-2005 By Race/Ethnicity

| Race/<br>Ethnicity                                   | Current<br>Age      | Risk of Being Diagnosed with Cancer |                                 |                                 |                                    | Risk of Dying from Cancer          |  |
|--|---------------------|-------------------------------------|---------------------------------|---------------------------------|------------------------------------|------------------------------------|--|
|  |                     | +10 yrs<br>Percent ( 95% C.I. )     | +20 yrs<br>Percent ( 95% C.I. ) | +30 yrs<br>Percent ( 95% C.I. ) | Eventually<br>Percent ( 95% C.I. ) | Eventually<br>Percent ( 95% C.I. ) |  |
| Asian/<br>Pacific<br>Islander                        | 0                   | 0.00 ( 0.00, 0.00 )                 | 0.00 ( 0.00, 0.00 )             | 0.00 ( 0.00, 0.00 )             | 0.53 ( 0.46, 0.62 )                | 0.47 ( 0.40, 0.55 )                |  |
|  | 10                  | 0.00 ( 0.00, 0.00 )                 | 0.00 ( 0.00, 0.00 )             | 0.00 ( 0.00, 0.01 )             | 0.54 ( 0.47, 0.63 )                | 0.47 ( 0.41, 0.56 )                |  |
|  | 20                  | 0.00 ( 0.00, 0.00 )                 | 0.00 ( 0.00, 0.01 )             | 0.01 ( 0.01, 0.02 )             | 0.54 ( 0.47, 0.63 )                | 0.47 ( 0.41, 0.56 )                |  |
|  | 30                  | 0.00 ( 0.00, 0.01 )                 | 0.01 ( 0.01, 0.02 )             | 0.07 ( 0.05, 0.08 )             | 0.54 ( 0.47, 0.63 )                | 0.48 ( 0.41, 0.56 )                |  |
|  | 40                  | 0.01 ( 0.01, 0.02 )                 | 0.06 ( 0.05, 0.08 )             | 0.17 ( 0.14, 0.20 )             | 0.54 ( 0.47, 0.63 )                | 0.48 ( 0.41, 0.56 )                |  |
|  | 50                  | 0.05 ( 0.04, 0.07 )                 | 0.16 ( 0.14, 0.19 )             | 0.32 ( 0.28, 0.36 )             | 0.54 ( 0.47, 0.63 )                | 0.48 ( 0.41, 0.57 )                |  |
|  | 60                  | 0.11 ( 0.09, 0.14 )                 | 0.28 ( 0.24, 0.32 )             | 0.47 ( 0.41, 0.54 )             | 0.51 ( 0.44, 0.60 )                | 0.46 ( 0.39, 0.55 )                |  |
|  | 70                  | 0.18 ( 0.15, 0.22 )                 | 0.39 ( 0.33, 0.46 )             | - ( - , - )                     | 0.44 ( 0.37, 0.54 )                | 0.40 ( 0.33, 0.50 )                |  |
| 80   | 0.27 ( 0.22, 0.35 ) | - ( - , - )                         | - ( - , - )                     | 0.33 ( 0.25, 0.45 )             | 0.32 ( 0.23, 0.43 )                |                                    |  |
| American<br>Indian/<br>Alaska<br>Native <sup>a</sup> | 0                   | 0.00 ( 0.00, 0.05 )                 | 0.00 ( 0.00, 0.05 )             | 0.00 ( 0.00, 0.05 )             | 0.44 ( 0.27, 1.09 )                | 0.65 ( 0.52, 0.89 )                |  |
|  | 10                  | 0.00 ( 0.00, 0.02 )                 | 0.00 ( 0.00, 0.02 )             | 0.00 ( 0.00, 0.03 )             | 0.45 ( 0.27, 1.11 )                | 0.67 ( 0.53, 0.91 )                |  |
|  | 20                  | 0.00 ( 0.00, 0.02 )                 | 0.00 ( 0.00, 0.03 )             | 0.03 ( 0.01, 0.07 )             | 0.45 ( 0.28, 1.12 )                | 0.67 ( 0.53, 0.92 )                |  |
|  | 30                  | 0.00 ( 0.00, 0.03 )                 | 0.03 ( 0.01, 0.07 )             | 0.10 ( 0.05, 0.18 )             | 0.46 ( 0.28, 1.15 )                | 0.69 ( 0.55, 0.95 )                |  |
|  | 40                  | 0.03 ( 0.01, 0.06 )                 | 0.10 ( 0.05, 0.18 )             | 0.30 ( 0.18, 0.46 )             | 0.48 ( 0.29, 1.19 )                | 0.72 ( 0.57, 0.99 )                |  |
|  | 50                  | 0.08 ( 0.04, 0.16 )                 | 0.28 ( 0.17, 0.45 )             | 0.42 ( 0.25, 0.66 )             | 0.48 ( 0.28, 1.23 )                | 0.74 ( 0.58, 1.02 )                |  |
|  | 60                  | 0.22 ( 0.12, 0.39 )                 | 0.37 ( 0.21, 0.62 )             | 0.43 ( 0.24, 0.76 )             | 0.43 ( 0.24, 1.26 )                | 0.72 ( 0.55, 1.04 )                |  |
|  | 70                  | 0.17 ( 0.07, 0.39 )                 | 0.24 ( 0.09, 0.59 )             | - ( - , - )                     | 0.25 ( 0.09, 1.25 )                | 0.57 ( 0.39, 0.94 )                |  |
| 80   | 0.10 ( 0.00, 0.58 ) | - ( - , - )                         | - ( - , - )                     | 0.11 ( 0.00, 1.64 )             | 0.39 ( 0.19, 0.94 )                |                                    |  |
| Hispanic <sup>b</sup>                                | 0                   | 0.00 ( 0.00, 0.00 )                 | 0.00 ( 0.00, 0.00 )             | 0.00 ( 0.00, 0.00 )             | 0.66 ( 0.59, 0.76 )                | 0.49 ( 0.45, 0.53 )                |  |
|  | 10                  | 0.00 ( 0.00, 0.00 )                 | 0.00 ( 0.00, 0.00 )             | 0.00 ( 0.00, 0.01 )             | 0.67 ( 0.60, 0.77 )                | 0.49 ( 0.46, 0.54 )                |  |
|  | 20                  | 0.00 ( 0.00, 0.00 )                 | 0.00 ( 0.00, 0.01 )             | 0.02 ( 0.02, 0.03 )             | 0.67 ( 0.60, 0.77 )                | 0.50 ( 0.46, 0.54 )                |  |
|  | 30                  | 0.00 ( 0.00, 0.00 )                 | 0.02 ( 0.02, 0.03 )             | 0.08 ( 0.07, 0.10 )             | 0.68 ( 0.61, 0.78 )                | 0.50 ( 0.46, 0.55 )                |  |
|  | 40                  | 0.02 ( 0.01, 0.02 )                 | 0.08 ( 0.07, 0.10 )             | 0.23 ( 0.21, 0.26 )             | 0.69 ( 0.61, 0.79 )                | 0.51 ( 0.47, 0.55 )                |  |
|  | 50                  | 0.07 ( 0.06, 0.08 )                 | 0.22 ( 0.20, 0.25 )             | 0.44 ( 0.40, 0.49 )             | 0.69 ( 0.61, 0.79 )                | 0.51 ( 0.47, 0.56 )                |  |
|  | 60                  | 0.17 ( 0.14, 0.19 )                 | 0.40 ( 0.35, 0.45 )             | 0.58 ( 0.52, 0.65 )             | 0.67 ( 0.58, 0.77 )                | 0.49 ( 0.45, 0.54 )                |  |
|  | 70                  | 0.27 ( 0.23, 0.31 )                 | 0.48 ( 0.41, 0.55 )             | - ( - , - )                     | 0.57 ( 0.48, 0.69 )                | 0.42 ( 0.37, 0.47 )                |  |
| 80   | 0.29 ( 0.23, 0.37 ) | - ( - , - )                         | - ( - , - )                     | 0.43 ( 0.32, 0.58 )             | 0.30 ( 0.25, 0.37 )                |                                    |  |

Devcan Version 7.0.0, April 2008, National Cancer Institute (<http://srab.cancer.gov/devcan/>).

Source: Incidence data are from the SEER 17 areas (San Francisco, Connecticut, Detroit, Hawaii, Iowa, New Mexico, Seattle, Utah, Atlanta, San Jose-Monterey, Los Angeles, Alaska Native Registry, Rural Georgia, California excluding SF/SJM/LA, Kentucky, Louisiana and New Jersey). Mortality data are from the NCHS public use data file for the total US.

<sup>a</sup> Underlying incidence and mortality data for American Indian/Alaska Native are based on the CHSDA (Contract Health Service Delivery Area) counties.

<sup>b</sup> Hispanic is not mutually exclusive from whites, blacks, Asian/Pacific Islanders, and American Indians/Alaska Natives. Underlying incidence data for Hispanics are based on NHIA and exclude cases from the Alaska Native Registry and Kentucky. Underlying mortality data for Hispanics exclude deaths from Minnesota, New Hampshire and North Dakota.

- Statistic could not be calculated.

A percent or confidence interval value of 0.00 represents a value that is below 0.005.

Table VIII-9 - continued  
ESOPHAGUS CANCER (Invasive)

Risk of Being Diagnosed With Cancer in 10, 20 and 30 Years, Lifetime Risk of Being Diagnosed with Cancer, and  
 Lifetime Risk of Dying from Cancer Given Cancer Free At Current Age  
 Females, 2003-2005 By Race/Ethnicity

| Race/<br>Ethnicity | Current<br>Age      | Risk of Being Diagnosed with Cancer |                                 |                                 |                                    | Risk of Dying from Cancer          |  |
|--------------------|---------------------|-------------------------------------|---------------------------------|---------------------------------|------------------------------------|------------------------------------|--|
|                    |                     | +10 yrs<br>Percent ( 95% C.I. )     | +20 yrs<br>Percent ( 95% C.I. ) | +30 yrs<br>Percent ( 95% C.I. ) | Eventually<br>Percent ( 95% C.I. ) | Eventually<br>Percent ( 95% C.I. ) |  |
| All Races          | 0                   | 0.00 ( 0.00, 0.00 )                 | 0.00 ( 0.00, 0.00 )             | 0.00 ( 0.00, 0.00 )             | 0.25 ( 0.24, 0.26 )                | 0.22 ( 0.21, 0.22 )                |  |
|                    | 10                  | 0.00 ( 0.00, 0.00 )                 | 0.00 ( 0.00, 0.00 )             | 0.00 ( 0.00, 0.00 )             | 0.25 ( 0.24, 0.26 )                | 0.22 ( 0.22, 0.23 )                |  |
|                    | 20                  | 0.00 ( 0.00, 0.00 )                 | 0.00 ( 0.00, 0.00 )             | 0.01 ( 0.01, 0.01 )             | 0.25 ( 0.24, 0.26 )                | 0.22 ( 0.22, 0.23 )                |  |
|                    | 30                  | 0.00 ( 0.00, 0.00 )                 | 0.01 ( 0.01, 0.01 )             | 0.03 ( 0.03, 0.03 )             | 0.25 ( 0.24, 0.26 )                | 0.22 ( 0.22, 0.23 )                |  |
|                    | 40                  | 0.01 ( 0.01, 0.01 )                 | 0.03 ( 0.03, 0.03 )             | 0.08 ( 0.08, 0.09 )             | 0.25 ( 0.24, 0.26 )                | 0.22 ( 0.22, 0.23 )                |  |
|                    | 50                  | 0.02 ( 0.02, 0.03 )                 | 0.08 ( 0.07, 0.08 )             | 0.17 ( 0.16, 0.17 )             | 0.25 ( 0.24, 0.26 )                | 0.22 ( 0.22, 0.23 )                |  |
|                    | 60                  | 0.06 ( 0.05, 0.06 )                 | 0.15 ( 0.14, 0.16 )             | 0.22 ( 0.21, 0.23 )             | 0.24 ( 0.23, 0.25 )                | 0.21 ( 0.21, 0.22 )                |  |
|                    | 70                  | 0.10 ( 0.10, 0.11 )                 | 0.18 ( 0.17, 0.19 )             | - ( - , - )                     | 0.20 ( 0.19, 0.21 )                | 0.19 ( 0.18, 0.19 )                |  |
| 80                 | 0.10 ( 0.09, 0.11 ) | - ( - , - )                         | - ( - , - )                     | 0.14 ( 0.13, 0.15 )             | 0.14 ( 0.13, 0.14 )                |                                    |  |
| White              | 0                   | 0.00 ( 0.00, 0.00 )                 | 0.00 ( 0.00, 0.00 )             | 0.00 ( 0.00, 0.00 )             | 0.25 ( 0.24, 0.26 )                | 0.21 ( 0.21, 0.22 )                |  |
|                    | 10                  | 0.00 ( 0.00, 0.00 )                 | 0.00 ( 0.00, 0.00 )             | 0.00 ( 0.00, 0.00 )             | 0.25 ( 0.24, 0.26 )                | 0.22 ( 0.21, 0.22 )                |  |
|                    | 20                  | 0.00 ( 0.00, 0.00 )                 | 0.00 ( 0.00, 0.00 )             | 0.01 ( 0.01, 0.01 )             | 0.25 ( 0.24, 0.26 )                | 0.22 ( 0.21, 0.22 )                |  |
|                    | 30                  | 0.00 ( 0.00, 0.00 )                 | 0.01 ( 0.01, 0.01 )             | 0.03 ( 0.02, 0.03 )             | 0.25 ( 0.24, 0.26 )                | 0.22 ( 0.21, 0.22 )                |  |
|                    | 40                  | 0.01 ( 0.00, 0.01 )                 | 0.03 ( 0.02, 0.03 )             | 0.08 ( 0.07, 0.08 )             | 0.25 ( 0.24, 0.26 )                | 0.22 ( 0.21, 0.22 )                |  |
|                    | 50                  | 0.02 ( 0.02, 0.02 )                 | 0.07 ( 0.07, 0.08 )             | 0.16 ( 0.15, 0.17 )             | 0.25 ( 0.24, 0.26 )                | 0.22 ( 0.21, 0.22 )                |  |
|                    | 60                  | 0.06 ( 0.05, 0.06 )                 | 0.15 ( 0.14, 0.16 )             | 0.22 ( 0.21, 0.23 )             | 0.24 ( 0.23, 0.25 )                | 0.21 ( 0.21, 0.22 )                |  |
|                    | 70                  | 0.10 ( 0.10, 0.11 )                 | 0.18 ( 0.17, 0.19 )             | - ( - , - )                     | 0.21 ( 0.19, 0.22 )                | 0.19 ( 0.18, 0.19 )                |  |
| 80                 | 0.10 ( 0.09, 0.11 ) | - ( - , - )                         | - ( - , - )                     | 0.14 ( 0.13, 0.15 )             | 0.13 ( 0.13, 0.14 )                |                                    |  |
| Black              | 0                   | 0.00 ( 0.00, 0.00 )                 | 0.00 ( 0.00, 0.00 )             | 0.00 ( 0.00, 0.00 )             | 0.30 ( 0.27, 0.34 )                | 0.28 ( 0.26, 0.30 )                |  |
|                    | 10                  | 0.00 ( 0.00, 0.00 )                 | 0.00 ( 0.00, 0.00 )             | 0.00 ( 0.00, 0.00 )             | 0.31 ( 0.27, 0.34 )                | 0.29 ( 0.27, 0.30 )                |  |
|                    | 20                  | 0.00 ( 0.00, 0.00 )                 | 0.00 ( 0.00, 0.00 )             | 0.02 ( 0.01, 0.02 )             | 0.31 ( 0.27, 0.35 )                | 0.29 ( 0.27, 0.30 )                |  |
|                    | 30                  | 0.00 ( 0.00, 0.00 )                 | 0.02 ( 0.01, 0.02 )             | 0.07 ( 0.06, 0.08 )             | 0.31 ( 0.27, 0.35 )                | 0.29 ( 0.27, 0.31 )                |  |
|                    | 40                  | 0.02 ( 0.01, 0.02 )                 | 0.07 ( 0.06, 0.08 )             | 0.16 ( 0.14, 0.18 )             | 0.31 ( 0.28, 0.35 )                | 0.29 ( 0.28, 0.31 )                |  |
|                    | 50                  | 0.05 ( 0.04, 0.07 )                 | 0.15 ( 0.12, 0.17 )             | 0.25 ( 0.22, 0.28 )             | 0.31 ( 0.27, 0.35 )                | 0.29 ( 0.27, 0.31 )                |  |
|                    | 60                  | 0.10 ( 0.08, 0.12 )                 | 0.21 ( 0.18, 0.25 )             | 0.26 ( 0.23, 0.30 )             | 0.28 ( 0.24, 0.32 )                | 0.27 ( 0.25, 0.29 )                |  |
|                    | 70                  | 0.13 ( 0.11, 0.16 )                 | 0.20 ( 0.16, 0.23 )             | - ( - , - )                     | 0.21 ( 0.18, 0.25 )                | 0.22 ( 0.20, 0.24 )                |  |
| 80                 | 0.09 ( 0.06, 0.12 ) | - ( - , - )                         | - ( - , - )                     | 0.12 ( 0.08, 0.16 )             | 0.14 ( 0.13, 0.16 )                |                                    |  |

Devcan Version 7.0.0, April 2008, National Cancer Institute (<http://srab.cancer.gov/devcan/>).

Source: Incidence data are from the SEER 17 areas (San Francisco, Connecticut, Detroit, Hawaii, Iowa, New Mexico, Seattle, Utah, Atlanta, San Jose-Monterey, Los Angeles, Alaska Native Registry, Rural Georgia, California excluding SF/SJM/LA, Kentucky, Louisiana and New Jersey). Mortality data are from the NCHS public use data file for the total US.

- Statistic could not be calculated.

A percent or confidence interval value of 0.00 represents a value that is below 0.005.

Table VIII-9 - continued  
ESOPHAGUS CANCER (Invasive)

Risk of Being Diagnosed With Cancer in 10, 20 and 30 Years, Lifetime Risk of Being Diagnosed with Cancer, and  
 Lifetime Risk of Dying from Cancer Given Cancer Free At Current Age  
 Females, 2003-2005 By Race/Ethnicity

| Race/<br>Ethnicity                                   | Current<br>Age      | Risk of Being Diagnosed with Cancer |                                 |                                 |                                    | Risk of Dying from Cancer          |  |
|--|---------------------|-------------------------------------|---------------------------------|---------------------------------|------------------------------------|------------------------------------|--|
|  |                     | +10 yrs<br>Percent ( 95% C.I. )     | +20 yrs<br>Percent ( 95% C.I. ) | +30 yrs<br>Percent ( 95% C.I. ) | Eventually<br>Percent ( 95% C.I. ) | Eventually<br>Percent ( 95% C.I. ) |  |
| Asian/<br>Pacific<br>Islander                        | 0                   | 0.00 ( 0.00, 0.00 )                 | 0.00 ( 0.00, 0.00 )             | 0.00 ( 0.00, 0.00 )             | 0.19 ( 0.14, 0.26 )                | 0.16 ( 0.12, 0.23 )                |  |
|  | 10                  | 0.00 ( 0.00, 0.00 )                 | 0.00 ( 0.00, 0.00 )             | 0.00 ( 0.00, 0.00 )             | 0.19 ( 0.14, 0.26 )                | 0.17 ( 0.13, 0.23 )                |  |
|  | 20                  | 0.00 ( 0.00, 0.00 )                 | 0.00 ( 0.00, 0.00 )             | 0.00 ( 0.00, 0.01 )             | 0.19 ( 0.14, 0.26 )                | 0.17 ( 0.13, 0.23 )                |  |
|  | 30                  | 0.00 ( 0.00, 0.00 )                 | 0.00 ( 0.00, 0.01 )             | 0.01 ( 0.01, 0.02 )             | 0.19 ( 0.14, 0.26 )                | 0.17 ( 0.13, 0.23 )                |  |
|  | 40                  | 0.00 ( 0.00, 0.00 )                 | 0.01 ( 0.01, 0.02 )             | 0.04 ( 0.03, 0.05 )             | 0.19 ( 0.14, 0.26 )                | 0.17 ( 0.12, 0.23 )                |  |
|  | 50                  | 0.01 ( 0.01, 0.02 )                 | 0.04 ( 0.03, 0.05 )             | 0.09 ( 0.07, 0.11 )             | 0.19 ( 0.14, 0.26 )                | 0.16 ( 0.12, 0.23 )                |  |
|  | 60                  | 0.03 ( 0.02, 0.04 )                 | 0.08 ( 0.06, 0.10 )             | 0.15 ( 0.12, 0.19 )             | 0.18 ( 0.14, 0.26 )                | 0.16 ( 0.12, 0.23 )                |  |
|  | 70                  | 0.05 ( 0.04, 0.07 )                 | 0.13 ( 0.10, 0.16 )             | - ( - , - )                     | 0.16 ( 0.12, 0.24 )                | 0.16 ( 0.11, 0.23 )                |  |
| 80   | 0.09 ( 0.06, 0.12 ) | - ( - , - )                         | - ( - , - )                     | 0.13 ( 0.08, 0.22 )             | 0.14 ( 0.09, 0.22 )                |                                    |  |
| American<br>Indian/<br>Alaska<br>Native <sup>a</sup> | 0                   | 0.00 ( 0.00, 0.05 )                 | 0.00 ( 0.00, 0.05 )             | 0.00 ( 0.00, 0.05 )             | 0.31 ( 0.16, 0.84 )                | 0.17 ( 0.11, 0.33 )                |  |
|  | 10                  | 0.00 ( 0.00, 0.02 )                 | 0.00 ( 0.00, 0.02 )             | 0.00 ( 0.00, 0.03 )             | 0.32 ( 0.17, 0.85 )                | 0.18 ( 0.11, 0.33 )                |  |
|  | 20                  | 0.00 ( 0.00, 0.02 )                 | 0.00 ( 0.00, 0.03 )             | 0.01 ( 0.00, 0.05 )             | 0.32 ( 0.17, 0.86 )                | 0.18 ( 0.11, 0.33 )                |  |
|  | 30                  | 0.00 ( 0.00, 0.03 )                 | 0.01 ( 0.00, 0.05 )             | 0.04 ( 0.01, 0.10 )             | 0.32 ( 0.17, 0.86 )                | 0.18 ( 0.11, 0.34 )                |  |
|  | 40                  | 0.01 ( 0.00, 0.05 )                 | 0.04 ( 0.01, 0.10 )             | 0.10 ( 0.04, 0.20 )             | 0.33 ( 0.17, 0.88 )                | 0.18 ( 0.11, 0.34 )                |  |
|  | 50                  | 0.03 ( 0.01, 0.08 )                 | 0.08 ( 0.03, 0.19 )             | 0.21 ( 0.10, 0.39 )             | 0.32 ( 0.16, 0.89 )                | 0.18 ( 0.11, 0.34 )                |  |
|  | 60                  | 0.06 ( 0.02, 0.16 )                 | 0.20 ( 0.09, 0.38 )             | 0.31 ( 0.15, 0.58 )             | 0.31 ( 0.15, 0.92 )                | 0.17 ( 0.10, 0.35 )                |  |
|  | 70                  | 0.15 ( 0.06, 0.34 )                 | 0.28 ( 0.12, 0.59 )             | - ( - , - )                     | 0.29 ( 0.12, 0.98 )                | 0.14 ( 0.07, 0.35 )                |  |
| 80   | 0.17 ( 0.04, 0.51 ) | - ( - , - )                         | - ( - , - )                     | 0.18 ( 0.04, 1.09 )             | 0.12 ( 0.05, 0.39 )                |                                    |  |
| Hispanic <sup>b</sup>                                | 0                   | 0.00 ( 0.00, 0.00 )                 | 0.00 ( 0.00, 0.00 )             | 0.00 ( 0.00, 0.00 )             | 0.18 ( 0.15, 0.23 )                | 0.15 ( 0.13, 0.18 )                |  |
|  | 10                  | 0.00 ( 0.00, 0.00 )                 | 0.00 ( 0.00, 0.00 )             | 0.00 ( 0.00, 0.00 )             | 0.18 ( 0.15, 0.23 )                | 0.15 ( 0.13, 0.18 )                |  |
|  | 20                  | 0.00 ( 0.00, 0.00 )                 | 0.00 ( 0.00, 0.00 )             | 0.00 ( 0.00, 0.01 )             | 0.18 ( 0.15, 0.23 )                | 0.15 ( 0.13, 0.18 )                |  |
|  | 30                  | 0.00 ( 0.00, 0.00 )                 | 0.00 ( 0.00, 0.01 )             | 0.01 ( 0.01, 0.02 )             | 0.18 ( 0.15, 0.23 )                | 0.15 ( 0.13, 0.18 )                |  |
|  | 40                  | 0.00 ( 0.00, 0.01 )                 | 0.01 ( 0.01, 0.02 )             | 0.04 ( 0.03, 0.05 )             | 0.18 ( 0.15, 0.23 )                | 0.15 ( 0.13, 0.18 )                |  |
|  | 50                  | 0.01 ( 0.01, 0.01 )                 | 0.04 ( 0.03, 0.05 )             | 0.10 ( 0.08, 0.12 )             | 0.18 ( 0.15, 0.23 )                | 0.15 ( 0.13, 0.18 )                |  |
|  | 60                  | 0.03 ( 0.02, 0.04 )                 | 0.09 ( 0.07, 0.11 )             | 0.17 ( 0.14, 0.20 )             | 0.18 ( 0.14, 0.23 )                | 0.15 ( 0.13, 0.18 )                |  |
|  | 70                  | 0.07 ( 0.05, 0.09 )                 | 0.15 ( 0.12, 0.19 )             | - ( - , - )                     | 0.16 ( 0.13, 0.21 )                | 0.14 ( 0.11, 0.17 )                |  |
| 80   | 0.10 ( 0.07, 0.14 ) | - ( - , - )                         | - ( - , - )                     | 0.11 ( 0.08, 0.17 )             | 0.12 ( 0.09, 0.15 )                |                                    |  |

Devcan Version 7.0.0, April 2008, National Cancer Institute (<http://srab.cancer.gov/devcan/>).

Source: Incidence data are from the SEER 17 areas (San Francisco, Connecticut, Detroit, Hawaii, Iowa, New Mexico, Seattle, Utah, Atlanta, San Jose-Monterey, Los Angeles, Alaska Native Registry, Rural Georgia, California excluding SF/SJM/LA, Kentucky, Louisiana and New Jersey). Mortality data are from the NCHS public use data file for the total US.

<sup>a</sup> Underlying incidence and mortality data for American Indian/Alaska Native are based on the CHSDA (Contract Health Service Delivery Area) counties.

<sup>b</sup> Hispanic is not mutually exclusive from whites, blacks, Asian/Pacific Islanders, and American Indians/Alaska Natives. Underlying incidence data for Hispanics are based on NHIA and exclude cases from the Alaska Native Registry and Kentucky. Underlying mortality data for Hispanics exclude deaths from Minnesota, New Hampshire and North Dakota.

- Statistic could not be calculated.

A percent or confidence interval value of 0.00 represents a value that is below 0.005.

Table VIII-10  
ESOPHAGUS CANCER (Invasive)

SEER INCIDENCE AND U.S. MORTALITY  
AGE-ADJUSTED RATES AND TRENDS<sup>a</sup>  
 By Race/Ethnicity and Sex

| <u>SEER Incidence</u>             | Rate 2001-2005 <sup>b</sup> |       |         | Seer 13 Areas <sup>c</sup><br>Trend 1996-2005<br>AAPC (%) |       |         | SEER 9 Areas <sup>d</sup><br>Trend 1996-2005<br>AAPC (%) |       |         |
|-----------------------------------|-----------------------------|-------|---------|---|-------|---------|--|-------|---------|
|                                   | Rate per 100,000 persons    |       |         | Total   | Males | Females | Total  | Males | Females |
|                                   | Total                       | Males | Females | Total   | Males | Females | Total  | Males | Females |
| RACE/ETHNICITY                    |                             |       |         |   |       |         |  |       |         |
| All Races                         | 4.6                         | 7.8   | 2.0     | 0.1   | 0.2   | -0.7    | 0.5*   | 0.7*  | -0.3*   |
| White                             | 4.6                         | 8.0   | 1.9     | 1.1*  | 1.4*  | -0.1    | 1.4*   | 1.7*  | 0.1     |
| White Hispanic <sup>e</sup>       | 3.1                         | 5.6   | 1.2     | -1.4  | -1.2  | -       | -  | -     | -       |
| White Non-Hispanic <sup>e</sup>   | 4.9                         | 8.3   | 2.0     | 1.5*  | 1.7*  | 0.2     | -  | -     | -       |
| Black                             | 5.9                         | 9.9   | 3.0     | -4.9*   | -5.4* | -3.7*   | -4.5*  | -5.0* | -2.6*   |
| Asian/Pacific Islander            | 2.4                         | 4.0   | 1.2     | -1.2  | -1.8* | -       | -  | -     | -       |
| Amer Ind/Alaska Nat <sup>f</sup>  | 4.4                         | 7.1   | 2.0     | -   | -     | -       | -  | -     | -       |
| Hispanic <sup>e</sup>             | 3.1                         | 5.5   | 1.2     | -1.1  | -1.0  | -2.0    | -  | -     | -       |
| <u>U.S. Mortality<sup>g</sup></u> |                             |       |         |   |       |         |  |       |         |
|                                   | Rate 2001-2005              |       |         | Trend 1996-2005 <sup>h</sup>                              |       |         |  |       |         |
|                                   | Rate per 100,000 persons    |       |         | AAPC (%)  |       |         |  |       |         |
|                                   | Total                       | Males | Females | Total   | Males | Females |  |       |         |
| RACE/ETHNICITY                    |                             |       |         |   |       |         |  |       |         |
| All Races                         | 4.4                         | 7.8   | 1.7     | 0.4*  | 0.5*  | -0.5*   |  |       |         |
| White                             | 4.4                         | 7.8   | 1.6     | 1.2*  | 1.5*  | -0.1    |  |       |         |
| White Hispanic <sup>e</sup>       | 2.4                         | 4.3   | 1.0     | -1.8*   | -1.6* | -2.4*   |  |       |         |
| White Non-Hispanic <sup>e</sup>   | 4.5                         | 8.1   | 1.7     | 1.4*  | 1.7*  | 0.1     |  |       |         |
| Black                             | 5.7                         | 9.8   | 2.8     | -4.3*   | -4.5* | -3.5*   |  |       |         |
| Asian/Pacific Islander            | 1.8                         | 3.1   | 0.8     | -2.8*   | -3.1* | -1.2    |  |       |         |
| Amer Ind/Alaska Nat               |                             |       |         |   |       |         |  |       |         |
| Total U.S.                        | 3.1                         | 5.3   | 1.4     | 2.2*  | 1.5*  | -       |  |       |         |
| CHSDA Counties                    | 4.0                         | 7.1   | 1.6     | 3.9*  | 3.2*  | -       |  |       |         |
| Non-CHSDA Counties                | 1.9                         | 3.0   | 1.0     | -   | -     | -       |  |       |         |
| Hispanic <sup>e</sup>             | 2.3                         | 4.2   | 0.9     | -1.8*   | -1.6* | -2.0*   |  |       |         |

The AAPC is the Average Annual Percent Change over the time interval. The AAPCs are calculated by the Joinpoint Regression Program Version 3.3, April 2008, National Cancer Institute.

Statistic not shown. Rate based on less than 16 cases for the time interval. Trend based on less than 10 cases for at least one year within the time interval.

Rates are age-adjusted to the 2000 US Std Population (19 age groups - Census P25-1130). Trends are based on rates age-adjusted to the 2000 US Std Population (19 age groups - Census P25-1130).

Incidence data used in calculating the 2001-2005 rates are from the SEER 17 areas (San Francisco, Connecticut, Detroit, Hawaii, Iowa, New Mexico, Seattle, Utah, Atlanta, San Jose-Monterey, Los Angeles, Alaska Native Registry, Rural Georgia, California excluding SF/SJM/LA, Kentucky, Louisiana and New Jersey).

The SEER 13 areas are San Francisco, Connecticut, Detroit, Hawaii, Iowa, New Mexico, Seattle, Utah, Atlanta, San Jose-Monterey, Los Angeles, Alaska Native Registry and Rural Georgia. The 1996-2005 AAPC trends are based on a Joinpoint analysis using diagnosis years 1992-2005.

The SEER 9 areas are San Francisco, Connecticut, Detroit, Hawaii, Iowa, New Mexico, Seattle, Utah, and Atlanta. The 1996-2005 AAPC trends are based on a Joinpoint analysis using diagnosis years 1975-2005.

Hispanic and Non-Hispanic are not mutually exclusive from whites, blacks, Asian/Pacific Islanders, and American Indians/Alaska Natives. Incidence data for Hispanics and Non-Hispanics are based on NHIA and exclude cases from the Alaska Native Registry and Kentucky. The 2001-2005 Hispanic and Non-Hispanic death rates exclude deaths from Minnesota, New Hampshire and North Dakota. The 1996-2005 Hispanic and Non-Hispanic mortality trends exclude deaths from Connecticut, Maine, Maryland, Minnesota, New Hampshire, New York, North Dakota, Oklahoma and Vermont.

Incidence data for American Indian/Alaska Native are based on the CHSDA(Contract Health Service Delivery Area) counties.

US Mortality Files, National Center for Health Statistics, CDC.

The 1996-2005 mortality AAPCs are based on a Joinpoint analysis using years of death 1992-2005.

The APC is significantly different from zero (p<.05).



Table VIII-11  
ESOPHAGUS CANCER (Invasive)

AGE-ADJUSTED SEER INCIDENCE RATES<sup>a</sup>  
 By Registry, Race and Sex

|  | <u>All Races</u> |              |                | <u>Whites</u> |              |                | <u>Blacks</u> |              |                |
|--|------------------|--------------|----------------|---------------|--------------|----------------|---------------|--------------|----------------|
|  | <u>Total</u>     | <u>Males</u> | <u>Females</u> | <u>Total</u>  | <u>Males</u> | <u>Females</u> | <u>Total</u>  | <u>Males</u> | <u>Females</u> |
| <u>SEER INCIDENCE RATES<sup>a</sup>, 2001-2005</u> |                  |              |                |               |              |                |               |              |                |
| <u>REGISTRY</u>                                    |                  |              |                |               |              |                |               |              |                |
| Atlanta & Rural Georgia                            | 4.5              | 7.5          | 2.2            | 4.0           | 6.7          | 1.8            | 5.9           | 9.7          | 3.2            |
| Atlanta  | 4.4              | 7.3          | 2.2            | 3.9           | 6.6          | 1.8            | 5.5           | 9.1          | 3.1            |
| Rural Georgia                                      | 7.5              | 12.1         | -              | 4.8           | 7.8          | -              | 13.0          | 22.3         | -              |
| California   | 4.1              | 6.9          | 1.8            | 4.3           | 7.3          | 1.9            | 4.8           | 7.9          | 2.6            |
| Greater Bay Area                                   | 4.0              | 6.7          | 1.9            | 4.4           | 7.5          | 2.0            | 4.9           | 7.6          | 2.9            |
| San Francisco-Oakland                              | 4.1              | 6.9          | 1.9            | 4.5           | 7.6          | 2.0            | 4.8           | 7.9          | 2.7            |
| San Jose-Monterey                                  | 4.0              | 6.5          | 2.0            | 4.3           | 7.2          | 1.9            | -             | -            | -              |
| Los Angeles  | 3.7              | 6.0          | 1.8            | 3.8           | 6.3          | 1.9            | 4.8           | 7.9          | 2.6            |
| Greater California                                 | 4.3              | 7.4          | 1.9            | 4.5           | 7.7          | 1.9            | 4.7           | 8.3          | 2.1            |
| Connecticut  | 5.7              | 9.8          | 2.4            | 5.6           | 9.8          | 2.3            | 7.1           | 11.8         | 3.7            |
| Detroit  | 5.4              | 9.2          | 2.6            | 5.2           | 8.9          | 2.3            | 6.8           | 11.2         | 3.7            |
| Hawaii   | 3.5              | 6.2          | 1.2            | 3.6           | 6.2          | -              | -             | -            | -              |
| Iowa   | 5.3              | 9.7          | 1.8            | 5.4           | 9.8          | 1.8            | -             | -            | -              |
| Kentucky   | 5.0              | 8.8          | 1.9            | 4.9           | 8.6          | 1.8            | 7.3           | 13.5         | 2.9            |
| Louisiana  | 5.1              | 9.1          | 1.8            | 4.8           | 8.6          | 1.7            | 5.9           | 10.9         | 2.3            |
| New Jersey   | 5.0              | 8.5          | 2.3            | 4.8           | 8.3          | 2.1            | 6.9           | 12.0         | 3.3            |
| New Mexico   | 4.0              | 7.0          | 1.5            | 4.2           | 7.3          | 1.5            | -             | -            | -              |
| Seattle-Puget Sound                                | 5.0              | 8.5          | 2.2            | 5.1           | 8.7          | 2.2            | 4.0           | -            | -              |
| Utah   | 3.4              | 6.1          | 1.0            | 3.5           | 6.3          | 1.0            | -             | -            | -              |
| 9 SEER Areas <sup>b</sup>                          | 4.8              | 8.2          | 2.0            | 4.8           | 8.4          | 1.9            | 5.9           | 9.6          | 3.3            |
| 11 SEER Areas <sup>b</sup>                         | 4.5              | 7.6          | 2.0            | 4.6           | 7.9          | 1.9            | 5.6           | 9.0          | 3.2            |
| 13 SEER Areas <sup>b</sup>                         | 4.5              | 7.7          | 2.0            | 4.6           | 7.9          | 1.9            | 5.7           | 9.2          | 3.2            |
| 17 SEER Areas <sup>b</sup>                         | 4.6              | 7.8          | 2.0            | 4.6           | 8.0          | 1.9            | 5.9           | 9.9          | 3.0            |

<sup>a</sup> Rates are per 100,000 and are age-adjusted to the 2000 US Std Population (19 age groups - Census P25-1130)

<sup>b</sup> The SEER 9 areas are San Francisco, Connecticut, Detroit, Hawaii, Iowa, New Mexico, Seattle, Utah and Atlanta.  
 The SEER 11 areas comprise the SEER 9 areas plus San Jose-Monterey and Los Angeles.

The SEER 13 areas comprise the SEER 11 areas plus the Alaska Native Registry and Rural Georgia.

The SEER 17 areas comprise the SEER 13 areas plus California excluding SF/SJM/LA, Kentucky, Louisiana and New Jersey.

- Statistic not shown. Rate based on less than 16 cases for the time interval.

Table VIII-12  
ESOPHAGUS CANCER (Invasive)

AGE-ADJUSTED SEER DEATH RATES<sup>a</sup>  
 By Registry, Race and Sex

|  | <u>All Races</u> |              |                | <u>Whites</u> |              |                | <u>Blacks</u> |              |                |
|--|------------------|--------------|----------------|---------------|--------------|----------------|---------------|--------------|----------------|
|  | <u>Total</u>     | <u>Males</u> | <u>Females</u> | <u>Total</u>  | <u>Males</u> | <u>Females</u> | <u>Total</u>  | <u>Males</u> | <u>Females</u> |
| <u>SEER DEATH RATES<sup>a</sup>, 2001-2005</u> |                  |              |                |               |              |                |               |              |                |
| REGISTRY                                       |                  |              |                |               |              |                |               |              |                |
| Atlanta & Rural Georgia                        | 3.9              | 6.6          | 1.9            | 3.3           | 5.5          | 1.6            | 5.5           | 10.1         | 2.4            |
| Atlanta  | 3.7              | 6.4          | 1.8            | 3.3           | 5.5          | 1.5            | 5.0           | 9.3          | 2.2            |
| Rural Georgia                                  | 6.9              | 10.9         | -              | 3.7           | -            | -              | 13.1          | 22.9         | -              |
| California                                     | 3.7              | 6.5          | 1.6            | 4.0           | 6.9          | 1.7            | 4.3           | 7.1          | 2.3            |
| Greater Bay Area                               | 3.6              | 6.0          | 1.6            | 4.0           | 6.7          | 1.8            | 4.8           | 7.9          | 2.6            |
| San Francisco-Oakland                          | 3.7              | 6.4          | 1.6            | 4.1           | 7.2          | 1.7            | 4.9           | 8.2          | 2.6            |
| San Jose-Monterey                              | 3.3              | 5.4          | 1.7            | 3.7           | 6.0          | 1.9            | -             | -            | -              |
| Los Angeles                                    | 3.2              | 5.5          | 1.5            | 3.3           | 5.8          | 1.5            | 4.1           | 6.5          | 2.3            |
| Greater California                             | 4.1              | 7.1          | 1.7            | 4.3           | 7.4          | 1.8            | 4.3           | 7.6          | 1.9            |
| Connecticut                                    | 4.7              | 8.4          | 1.9            | 4.6           | 8.3          | 1.8            | 6.3           | 11.5         | 2.7            |
| Detroit  | 4.9              | 8.8          | 1.9            | 5.0           | 9.1          | 1.8            | 4.8           | 8.6          | 2.2            |
| Hawaii   | 2.6              | 4.7          | 0.8            | 3.1           | 5.6          | -              | -             | -            | -              |
| Iowa   | 4.7              | 8.6          | 1.7            | 4.7           | 8.6          | 1.7            | -             | -            | -              |
| Kentucky                                       | 4.6              | 8.4          | 1.6            | 4.5           | 8.2          | 1.5            | 6.7           | 12.5         | -              |
| Louisiana                                      | 4.4              | 8.1          | 1.6            | 4.2           | 7.6          | 1.5            | 5.4           | 9.9          | 2.1            |
| New Jersey                                     | 4.3              | 7.5          | 1.8            | 4.3           | 7.5          | 1.8            | 5.4           | 9.9          | 2.4            |
| New Mexico                                     | 3.8              | 6.9          | 1.3            | 3.9           | 7.2          | 1.3            | -             | -            | -              |
| Seattle-Puget Sound                            | 4.6              | 8.2          | 1.8            | 4.8           | 8.6          | 1.8            | 4.2           | -            | -              |
| Utah   | 3.3              | 6.1          | 0.8            | 3.3           | 6.2          | 0.8            | -             | -            | -              |
| 9 SEER Areas <sup>b</sup>                      | 4.2              | 7.5          | 1.6            | 4.4           | 7.8          | 1.6            | 5.0           | 8.7          | 2.4            |
| 11 SEER Areas <sup>b</sup>                     | 3.9              | 6.9          | 1.6            | 4.1           | 7.3          | 1.6            | 4.7           | 8.1          | 2.4            |
| 13 SEER Areas <sup>b</sup>                     | 4.0              | 7.0          | 1.6            | 4.1           | 7.3          | 1.6            | 4.9           | 8.3          | 2.4            |
| 17 SEER Areas <sup>b</sup>                     | 4.1              | 7.2          | 1.7            | 4.2           | 7.4          | 1.7            | 5.0           | 8.9          | 2.3            |
| Total U.S.                                     | 4.4              | 7.8          | 1.7            | 4.4           | 7.8          | 1.6            | 5.7           | 9.8          | 2.8            |

<sup>a</sup> US Mortality Files, National Center for Health Statistics, Centers for Disease Control and Prevention. Rates are per 100,000 and are age-adjusted to the 2000 US Std Population (19 age groups - Census P25-1130).

<sup>b</sup> The SEER 9 areas are San Francisco, Connecticut, Detroit, Hawaii, Iowa, New Mexico, Seattle, Utah and Atlanta.

The SEER 11 areas comprise the SEER 9 areas plus San Jose-Monterey and Los Angeles.

The SEER 13 areas comprise the SEER 11 areas plus the Alaska Native Registry and Rural Georgia.

The SEER 17 areas comprise the SEER 13 areas plus California excluding SF/SJM/LA, Kentucky, Louisiana and New Jersey.

- Statistic not shown. Rate based on less than 16 cases for the time interval.

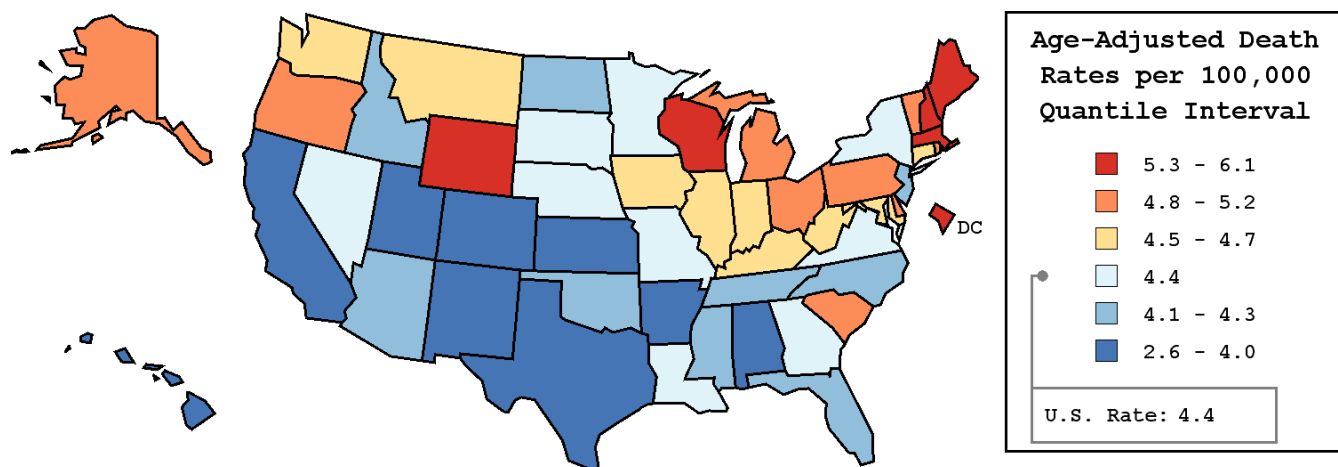
Table VIII-13  
ESOPHAGUS CANCER (Invasive)

AVERAGE ANNUAL AGE-ADJUSTED CANCER DEATH<sup>a</sup> RATES BY STATE, ALL RACES, 2001-2005

Males and Females

| State            | Rate             | SE   | Rank | PD                 |
|------------------|------------------|------|------|--------------------|
| TOTAL U.S.       | 4.4              | 0.02 |      |                    |
| High Five States |                  |      |      |                    |
| D.C.             | 6.1 <sup>b</sup> | 0.46 | (01) | 38.6 <sup>c</sup>  |
| Wyoming          | 6.0              | 0.49 | (02) | 36.4 <sup>c</sup>  |
| Maine            | 6.0 <sup>b</sup> | 0.28 | (03) | 36.4 <sup>c</sup>  |
| New Hampshire    | 5.7 <sup>b</sup> | 0.30 | (04) | 29.5 <sup>c</sup>  |
| Massachusetts    | 5.3 <sup>b</sup> | 0.12 | (05) | 20.5 <sup>c</sup>  |
| Low Five States  |                  |      |      |                    |
| Texas            | 3.8 <sup>b</sup> | 0.06 | (47) | -13.6              |
| California       | 3.7 <sup>b</sup> | 0.05 | (48) | -15.9 <sup>c</sup> |
| Arkansas         | 3.6 <sup>b</sup> | 0.16 | (49) | -18.2 <sup>c</sup> |
| Utah             | 3.3 <sup>b</sup> | 0.19 | (50) | -25.0 <sup>c</sup> |
| Hawaii           | 2.6 <sup>b</sup> | 0.19 | (51) | -40.9 <sup>c</sup> |

| State         | Rate             | SE   | Rank | PD                 | State          | Rate             | SE   | Rank | PD                 |
|---------------|------------------|------|------|--------------------|----------------|------------------|------|------|--------------------|
| Alabama       | 4.0              | 0.13 | (44) | -9.1               | Montana        | 4.7              | 0.31 | (16) | 6.8                |
| Alaska        | 4.9              | 0.54 | (13) | 11.4               | Nebraska       | 4.4              | 0.22 | (32) | 0.0                |
| Arizona       | 4.1              | 0.12 | (41) | -6.8               | Nevada         | 4.4              | 0.21 | (29) | 0.0                |
| Arkansas      | 3.6 <sup>b</sup> | 0.16 | (49) | -18.2 <sup>c</sup> | New Hampshire  | 5.7 <sup>b</sup> | 0.30 | (04) | 29.5 <sup>c</sup>  |
| California    | 3.7 <sup>b</sup> | 0.05 | (48) | -15.9 <sup>c</sup> | New Jersey     | 4.3              | 0.10 | (36) | -2.3               |
| Colorado      | 4.0              | 0.15 | (43) | -9.1               | New Mexico     | 3.8              | 0.20 | (45) | -13.6              |
| Connecticut   | 4.7              | 0.16 | (17) | 6.8                | New York       | 4.4              | 0.07 | (28) | 0.0                |
| Delaware      | 5.2              | 0.35 | (10) | 18.2 <sup>c</sup>  | North Carolina | 4.2              | 0.10 | (37) | -4.5               |
| D.C.          | 6.1 <sup>b</sup> | 0.46 | (01) | 38.6 <sup>c</sup>  | North Dakota   | 4.2              | 0.34 | (38) | -4.5               |
| Florida       | 4.1 <sup>b</sup> | 0.06 | (39) | -6.8               | Ohio           | 5.2 <sup>b</sup> | 0.09 | (09) | 18.2 <sup>c</sup>  |
| Georgia       | 4.4              | 0.11 | (33) | 0.0                | Oklahoma       | 4.1              | 0.15 | (42) | -6.8               |
| Hawaii        | 2.6 <sup>b</sup> | 0.19 | (51) | -40.9 <sup>c</sup> | Oregon         | 5.2 <sup>b</sup> | 0.17 | (08) | 18.2 <sup>c</sup>  |
| Idaho         | 4.3              | 0.26 | (34) | -2.3               | Pennsylvania   | 5.0 <sup>b</sup> | 0.08 | (11) | 13.6               |
| Illinois      | 4.7              | 0.09 | (20) | 6.8                | Rhode Island   | 5.2              | 0.30 | (07) | 18.2 <sup>c</sup>  |
| Indiana       | 4.6              | 0.12 | (22) | 4.5                | South Carolina | 4.9              | 0.15 | (14) | 11.4               |
| Iowa          | 4.7              | 0.17 | (19) | 6.8                | South Dakota   | 4.4              | 0.32 | (30) | 0.0                |
| Kansas        | 3.8 <sup>b</sup> | 0.16 | (46) | -13.6              | Tennessee      | 4.1              | 0.12 | (40) | -6.8               |
| Kentucky      | 4.6              | 0.15 | (21) | 4.5                | Texas          | 3.8 <sup>b</sup> | 0.06 | (47) | -13.6              |
| Louisiana     | 4.4              | 0.14 | (26) | 0.0                | Utah           | 3.3 <sup>b</sup> | 0.19 | (50) | -25.0 <sup>c</sup> |
| Maine         | 6.0 <sup>b</sup> | 0.28 | (03) | 36.4 <sup>c</sup>  | Vermont        | 4.8              | 0.38 | (15) | 9.1                |
| Maryland      | 4.7              | 0.13 | (18) | 6.8                | Virginia       | 4.4              | 0.11 | (27) | 0.0                |
| Massachusetts | 5.3 <sup>b</sup> | 0.12 | (05) | 20.5 <sup>c</sup>  | Washington     | 4.6              | 0.13 | (23) | 4.5                |
| Michigan      | 5.0 <sup>b</sup> | 0.10 | (12) | 13.6               | West Virginia  | 4.5              | 0.20 | (24) | 2.3                |
| Minnesota     | 4.4              | 0.13 | (31) | 0.0                | Wisconsin      | 5.3 <sup>b</sup> | 0.14 | (06) | 20.5 <sup>c</sup>  |
| Mississippi   | 4.3              | 0.17 | (35) | -2.3               | Wyoming        | 6.0              | 0.49 | (02) | 36.4 <sup>c</sup>  |
| Missouri      | 4.4              | 0.12 | (25) | 0.0                |                |                  |      |      |                    |



<sup>a</sup> US Mortality Files, National Center for Health Statistics, Centers for Disease Control and Prevention. Rates are per 100,000 and are age-adjusted to the 2000 US Std Population (19 age groups - Census P25-1130).  
<sup>b</sup> Difference between state rate and total U.S. rate is statistically significant ( $p \leq .0002$ ).  
<sup>c</sup> Absolute percent difference between state rate and total U.S. rate is 15% or more.  
SE Standard error of the rate.  
PD Percent difference between state rate and total U.S. rate.

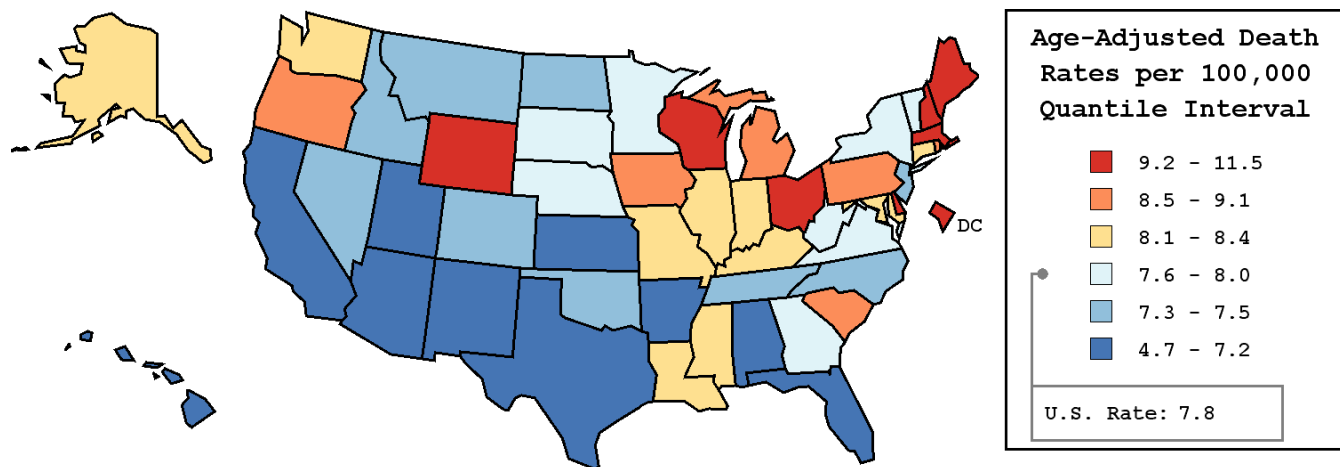
Table VIII-14  
 ESOPHAGUS CANCER (Invasive)

AVERAGE ANNUAL AGE-ADJUSTED CANCER DEATH<sup>a</sup> RATES BY STATE, ALL RACES, 2001-2005

Males

| State            | Rate              | SE   | Rank | PD                 |
|------------------|-------------------|------|------|--------------------|
| TOTAL U.S.       | 7.8               | 0.04 |      |                    |
| High Five States |                   |      |      |                    |
| D.C.             | 11.5 <sup>b</sup> | 0.99 | (01) | 47.4 <sup>c</sup>  |
| Maine            | 10.8 <sup>b</sup> | 0.57 | (02) | 38.5 <sup>c</sup>  |
| Wyoming          | 10.6              | 0.98 | (03) | 35.9 <sup>c</sup>  |
| New Hampshire    | 10.2 <sup>b</sup> | 0.61 | (04) | 30.8 <sup>c</sup>  |
| Massachusetts    | 9.9 <sup>b</sup>  | 0.26 | (05) | 26.9 <sup>c</sup>  |
| Low Five States  |                   |      |      |                    |
| Texas            | 6.7 <sup>b</sup>  | 0.13 | (47) | -14.1              |
| California       | 6.5 <sup>b</sup>  | 0.10 | (48) | -16.7 <sup>c</sup> |
| Arkansas         | 6.2 <sup>b</sup>  | 0.31 | (49) | -20.5 <sup>c</sup> |
| Utah             | 6.1 <sup>b</sup>  | 0.40 | (50) | -21.8 <sup>c</sup> |
| Hawaii           | 4.7 <sup>b</sup>  | 0.39 | (51) | -39.7 <sup>c</sup> |

| State         | Rate              | SE   | Rank | PD                 | State          | Rate              | SE   | Rank | PD                 |
|---------------|-------------------|------|------|--------------------|----------------|-------------------|------|------|--------------------|
| Alabama       | 7.2               | 0.27 | (43) | -7.7               | Montana        | 7.5               | 0.57 | (35) | -3.8               |
| Alaska        | 8.2               | 1.05 | (20) | 5.1                | Nebraska       | 7.9               | 0.45 | (27) | 1.3                |
| Arizona       | 7.2               | 0.24 | (42) | -7.7               | Nevada         | 7.3               | 0.39 | (39) | -6.4               |
| Arkansas      | 6.2 <sup>b</sup>  | 0.31 | (49) | -20.5 <sup>c</sup> | New Hampshire  | 10.2 <sup>b</sup> | 0.61 | (04) | 30.8 <sup>c</sup>  |
| California    | 6.5 <sup>b</sup>  | 0.10 | (48) | -16.7 <sup>c</sup> | New Jersey     | 7.5               | 0.20 | (34) | -3.8               |
| Colorado      | 7.3               | 0.30 | (40) | -6.4               | New Mexico     | 6.9               | 0.42 | (45) | -11.5              |
| Connecticut   | 8.4               | 0.32 | (15) | 7.7                | New York       | 7.7               | 0.14 | (31) | -1.3               |
| Delaware      | 9.4               | 0.72 | (07) | 20.5 <sup>c</sup>  | North Carolina | 7.3               | 0.20 | (41) | -6.4               |
| D.C.          | 11.5 <sup>b</sup> | 0.99 | (01) | 47.4 <sup>c</sup>  | North Dakota   | 7.5               | 0.68 | (38) | -3.8               |
| Florida       | 7.2 <sup>b</sup>  | 0.12 | (44) | -7.7               | Ohio           | 9.4 <sup>b</sup>  | 0.19 | (08) | 20.5 <sup>c</sup>  |
| Georgia       | 7.7               | 0.23 | (30) | -1.3               | Oklahoma       | 7.5               | 0.31 | (36) | -3.8               |
| Hawaii        | 4.7 <sup>b</sup>  | 0.39 | (51) | -39.7 <sup>c</sup> | Oregon         | 9.0 <sup>b</sup>  | 0.33 | (10) | 15.4 <sup>c</sup>  |
| Idaho         | 7.5               | 0.50 | (33) | -3.8               | Pennsylvania   | 9.1 <sup>b</sup>  | 0.17 | (09) | 16.7 <sup>c</sup>  |
| Illinois      | 8.4               | 0.18 | (17) | 7.7                | Rhode Island   | 8.7               | 0.59 | (13) | 11.5               |
| Indiana       | 8.3               | 0.25 | (18) | 6.4                | South Carolina | 8.8               | 0.31 | (12) | 12.8               |
| Iowa          | 8.6               | 0.34 | (14) | 10.3               | South Dakota   | 8.0               | 0.65 | (25) | 2.6                |
| Kansas        | 6.9               | 0.34 | (46) | -11.5              | Tennessee      | 7.5               | 0.24 | (37) | -3.8               |
| Kentucky      | 8.4               | 0.30 | (16) | 7.7                | Texas          | 6.7 <sup>b</sup>  | 0.13 | (47) | -14.1              |
| Louisiana     | 8.1               | 0.30 | (24) | 3.8                | Utah           | 6.1 <sup>b</sup>  | 0.40 | (50) | -21.8 <sup>c</sup> |
| Maine         | 10.8 <sup>b</sup> | 0.57 | (02) | 38.5 <sup>c</sup>  | Vermont        | 8.0               | 0.75 | (26) | 2.6                |
| Maryland      | 8.3               | 0.27 | (19) | 6.4                | Virginia       | 7.7               | 0.23 | (32) | -1.3               |
| Massachusetts | 9.9 <sup>b</sup>  | 0.26 | (05) | 26.9 <sup>c</sup>  | Washington     | 8.1               | 0.25 | (21) | 3.8                |
| Michigan      | 8.9 <sup>b</sup>  | 0.20 | (11) | 14.1               | West Virginia  | 7.9               | 0.41 | (28) | 1.3                |
| Minnesota     | 7.9               | 0.27 | (29) | 1.3                | Wisconsin      | 9.4 <sup>b</sup>  | 0.28 | (06) | 20.5 <sup>c</sup>  |
| Mississippi   | 8.1               | 0.36 | (22) | 3.8                | Wyoming        | 10.6              | 0.98 | (03) | 35.9 <sup>c</sup>  |
| Missouri      | 8.1               | 0.25 | (23) | 3.8                |                |                   |      |      |                    |



<sup>a</sup> US Mortality Files, National Center for Health Statistics, Centers for Disease Control and Prevention. Rates are per 100,000 and are age-adjusted to the 2000 US Std Population (19 age groups - Census P25-1130).  
<sup>b</sup> Difference between state rate and total U.S. rate is statistically significant ( $p \leq .0002$ ).  
<sup>c</sup> Absolute percent difference between state rate and total U.S. rate is 15% or more.  
 SE Standard error of the rate.  
 PD Percent difference between state rate and total U.S. rate.

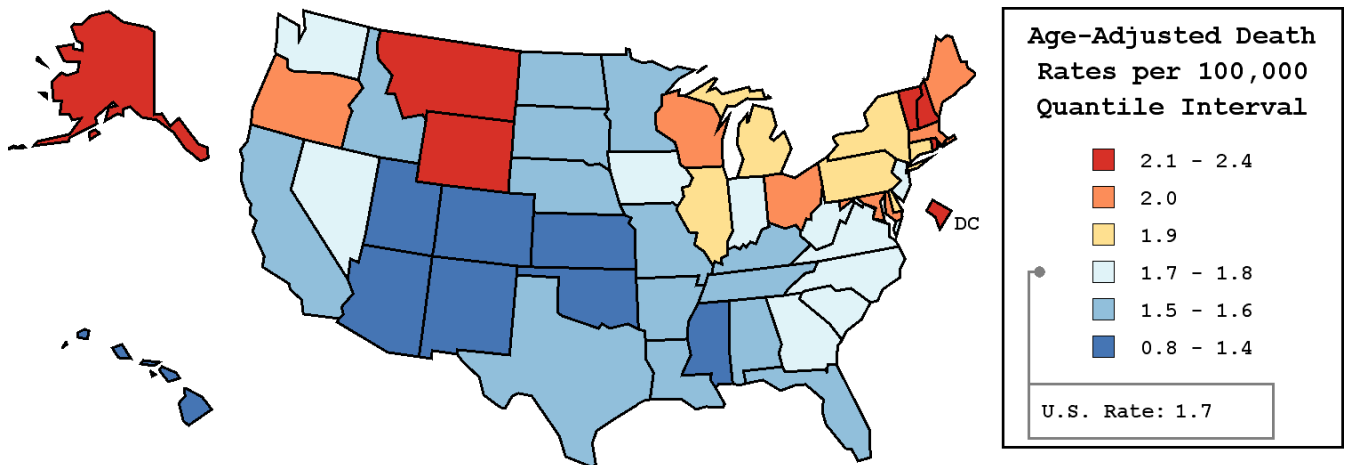
Table VIII-15  
ESOPHAGUS CANCER (Invasive)

AVERAGE ANNUAL AGE-ADJUSTED CANCER DEATH<sup>a</sup> RATES BY STATE, ALL RACES, 2001-2005

Females

| State            | Rate             | SE   | Rank | PD                 |
|------------------|------------------|------|------|--------------------|
| TOTAL U.S.       | 1.7              | 0.01 |      |                    |
| High Five States |                  |      |      |                    |
| Rhode Island     | 2.4              | 0.26 | (01) | 41.2 <sup>c</sup>  |
| Montana          | 2.4              | 0.29 | (02) | 41.2 <sup>c</sup>  |
| Vermont          | 2.3              | 0.35 | (03) | 35.3 <sup>c</sup>  |
| D.C.             | 2.2              | 0.37 | (04) | 29.4 <sup>c</sup>  |
| Wyoming          | 2.2              | 0.41 | (05) | 29.4 <sup>c</sup>  |
| Low Five States  |                  |      |      |                    |
| Oklahoma         | 1.3 <sup>b</sup> | 0.11 | (47) | -23.5 <sup>c</sup> |
| New Mexico       | 1.3              | 0.16 | (48) | -23.5 <sup>c</sup> |
| Kansas           | 1.3 <sup>b</sup> | 0.12 | (49) | -23.5 <sup>c</sup> |
| Utah             | 0.8 <sup>b</sup> | 0.13 | (50) | -52.9 <sup>c</sup> |
| Hawaii           | 0.8 <sup>b</sup> | 0.14 | (51) | -52.9 <sup>c</sup> |

| State         | Rate             | SE   | Rank | PD                 | State          | Rate             | SE   | Rank | PD                 |
|---------------|------------------|------|------|--------------------|----------------|------------------|------|------|--------------------|
| Alabama       | 1.5              | 0.10 | (42) | -11.8              | Montana        | 2.4              | 0.29 | (02) | 41.2 <sup>c</sup>  |
| Alaska        | 2.1              | 0.49 | (07) | 23.5 <sup>c</sup>  | Nebraska       | 1.6              | 0.17 | (36) | -5.9               |
| Arizona       | 1.4              | 0.10 | (44) | -17.6 <sup>c</sup> | Nevada         | 1.7              | 0.18 | (27) | 0.0                |
| Arkansas      | 1.6              | 0.14 | (37) | -5.9               | New Hampshire  | 2.2              | 0.24 | (06) | 29.4 <sup>c</sup>  |
| California    | 1.6              | 0.04 | (33) | -5.9               | New Jersey     | 1.8              | 0.08 | (22) | 5.9                |
| Colorado      | 1.4              | 0.12 | (45) | -17.6 <sup>c</sup> | New Mexico     | 1.3              | 0.16 | (48) | -23.5 <sup>c</sup> |
| Connecticut   | 1.9              | 0.13 | (18) | 11.8               | New York       | 1.9              | 0.06 | (16) | 11.8               |
| Delaware      | 1.9              | 0.28 | (15) | 11.8               | North Carolina | 1.8              | 0.09 | (26) | 5.9                |
| D.C.          | 2.2              | 0.37 | (04) | 29.4 <sup>c</sup>  | North Dakota   | 1.5              | 0.28 | (38) | -11.8              |
| Florida       | 1.6              | 0.05 | (31) | -5.9               | Ohio           | 2.0 <sup>b</sup> | 0.08 | (09) | 17.6 <sup>c</sup>  |
| Georgia       | 1.8              | 0.09 | (24) | 5.9                | Oklahoma       | 1.3 <sup>b</sup> | 0.11 | (47) | -23.5 <sup>c</sup> |
| Hawaii        | 0.8 <sup>b</sup> | 0.14 | (51) | -52.9 <sup>c</sup> | Oregon         | 2.0              | 0.14 | (08) | 17.6 <sup>c</sup>  |
| Idaho         | 1.5              | 0.21 | (40) | -11.8              | Pennsylvania   | 1.9              | 0.07 | (17) | 11.8               |
| Illinois      | 1.9              | 0.07 | (19) | 11.8               | Rhode Island   | 2.4              | 0.26 | (01) | 41.2 <sup>c</sup>  |
| Indiana       | 1.7              | 0.10 | (28) | 0.0                | South Carolina | 1.8              | 0.12 | (21) | 5.9                |
| Iowa          | 1.7              | 0.13 | (29) | 0.0                | South Dakota   | 1.5              | 0.25 | (41) | -11.8              |
| Kansas        | 1.3 <sup>b</sup> | 0.12 | (49) | -23.5 <sup>c</sup> | Tennessee      | 1.5              | 0.09 | (43) | -11.8              |
| Kentucky      | 1.6              | 0.11 | (35) | -5.9               | Texas          | 1.5 <sup>b</sup> | 0.05 | (39) | -11.8              |
| Louisiana     | 1.6              | 0.12 | (30) | -5.9               | Utah           | 0.8 <sup>b</sup> | 0.13 | (50) | -52.9 <sup>c</sup> |
| Maine         | 2.0              | 0.21 | (11) | 17.6 <sup>c</sup>  | Vermont        | 2.3              | 0.35 | (03) | 35.3 <sup>c</sup>  |
| Maryland      | 2.0              | 0.12 | (10) | 17.6 <sup>c</sup>  | Virginia       | 1.8              | 0.10 | (20) | 5.9                |
| Massachusetts | 2.0              | 0.10 | (13) | 17.6 <sup>c</sup>  | Washington     | 1.8              | 0.11 | (25) | 5.9                |
| Michigan      | 1.9              | 0.08 | (14) | 11.8               | West Virginia  | 1.8              | 0.17 | (23) | 5.9                |
| Minnesota     | 1.6              | 0.11 | (32) | -5.9               | Wisconsin      | 2.0              | 0.11 | (12) | 17.6 <sup>c</sup>  |
| Mississippi   | 1.4              | 0.13 | (46) | -17.6 <sup>c</sup> | Wyoming        | 2.2              | 0.41 | (05) | 29.4 <sup>c</sup>  |
| Missouri      | 1.6              | 0.09 | (34) | -5.9               |                |                  |      |      |                    |



<sup>a</sup> US Mortality Files, National Center for Health Statistics, Centers for Disease Control and Prevention. Rates are per 100,000 and are age-adjusted to the 2000 US Std Population (19 age groups - Census P25-1130).  
<sup>b</sup> Difference between state rate and total U.S. rate is statistically significant ( $p \leq .0002$ ).  
<sup>c</sup> Absolute percent difference between state rate and total U.S. rate is 15% or more.  
SE Standard error of the rate.  
PD Percent difference between state rate and total U.S. rate.

Table VIII-16  
ESOPHAGUS CANCER (Invasive)

Estimated United States Cancer Prevalence Counts<sup>a</sup> on January 1, 2005  
 By Race/Ethnicity, Sex and Years Since Diagnosis

| Years Since Diagnosis               | 0 to <5 | 5 to <10 | 10 to <15 | 15 to <20 | 20 to <25 | 25 to <30 | 0 to <15 <sup>e</sup> | 0 to <30 <sup>e</sup> | >=30 <sup>g</sup> | Complete <sup>h</sup> |
|-------------------------------------|---------|----------|-----------|-----------|-----------|-----------|-----------------------|-----------------------|-------------------|-----------------------|
| <u>Race/Sex</u>                     |         |          |           |           |           |           |                       |                       |                   |                       |
| All Races <sup>b</sup>              | 18,953  | 4,963    | 2,127     | 700       | 346       | 99        | 26,042                | 27,187                | 221               | 27,408                |
| Males                               | 14,462  | 3,732    | 1,564     | 456       | 238       | 60        | 19,757                | 20,510                | 108               | 20,618                |
| Females                             | 4,491   | 1,231    | 563       | 244       | 108       | 39        | 6,285                 | 6,677                 | 113               | 6,790                 |
| White <sup>b</sup>                  | 16,776  | 4,378    | 1,774     | 585       | 291       | 73        | 22,928                | 23,878                | 182               | 24,060                |
| Males                               | 13,062  | 3,335    | 1,299     | 382       | 209       | 60        | 17,696                | 18,347                | 101               | 18,448                |
| Females                             | 3,714   | 1,043    | 475       | 203       | 82        | 13        | 5,232                 | 5,531                 | 81                | 5,612                 |
| Black <sup>b</sup>                  | 1,707   | 438      | 293       | 92        | 54        | 26        | 2,438                 | 2,610                 | 55                | 2,665                 |
| Males                               | 1,026   | 279      | 218       | 62        | 28        | 0         | 1,523                 | 1,613                 | 16                | 1,629                 |
| Females                             | 681     | 159      | 75        | 30        | 26        | 26        | 915                   | 997                   | 39                | 1,036                 |
| Asian/Pacific Islander <sup>c</sup> | 330     | 90       | 54        | +         | +         | +         | 474                   | +                     | +                 | +                     |
| Males                               | 240     | 70       | 42        | +         | +         | +         | 351                   | +                     | +                 | +                     |
| Females                             | 90      | 20       | 12        | +         | +         | +         | 123                   | +                     | +                 | +                     |
| Hispanic <sup>d</sup>               | 716     | 166      | 106       | +         | +         | +         | 987                   | +                     | +                 | +                     |
| Males                               | 589     | 136      | 86        | +         | +         | +         | 811                   | +                     | +                 | +                     |
| Females                             | 127     | 30       | 20        | +         | +         | +         | 176                   | +                     | +                 | +                     |

Estimated prevalence percent<sup>a</sup> on January 1, 2005, of the SEER 11 population diagnosed in the previous 15 years  
 By Age at Prevalence, Race/Ethnicity and Sex

| Age at Prevalence                   | Age Specific (Crude) |     |       |         |         |         |         |         |         |         | Age-Adjusted <sup>f</sup> |
|-------------------------------------|----------------------|-----|-------|---------|---------|---------|---------|---------|---------|---------|---------------------------|
|                                     | All Ages             | 0-9 | 10-19 | 20-29   | 30-39   | 40-49   | 50-59   | 60-69   | 70-79   | 80+     | All Ages                  |
| <u>Race/Sex</u>                     |                      |     |       |         |         |         |         |         |         |         |                           |
| All Races <sup>c</sup>              | 0.0073%              | -   | -     | 0.0001% | 0.0005% | 0.0024% | 0.0114% | 0.0295% | 0.0445% | 0.0364% | 0.0077%                   |
| Males                               | 0.0111%              | -   | -     | -       | 0.0009% | 0.0038% | 0.0191% | 0.0503% | 0.0724% | 0.0656% | 0.0130%                   |
| Females                             | 0.0036%              | -   | -     | -       | -       | 0.0009% | 0.0040% | 0.0109% | 0.0232% | 0.0203% | 0.0035%                   |
| White <sup>c</sup>                  | 0.0081%              | -   | -     | -       | 0.0006% | 0.0025% | 0.0124% | 0.0307% | 0.0482% | 0.0374% | 0.0082%                   |
| Males                               | 0.0125%              | -   | -     | -       | 0.0011% | 0.0041% | 0.0213% | 0.0528% | 0.0790% | 0.0679% | 0.0139%                   |
| Females                             | 0.0038%              | -   | -     | -       | -       | 0.0008% | 0.0037% | 0.0104% | 0.0241% | 0.0208% | 0.0035%                   |
| Black <sup>c</sup>                  | 0.0056%              | -   | -     | -       | -       | 0.0031% | 0.0120% | 0.0358% | 0.0371% | 0.0314% | 0.0077%                   |
| Males                               | 0.0072%              | -   | -     | -       | -       | 0.0040% | 0.0148% | 0.0544% | 0.0535% | 0.0535% | 0.0112%                   |
| Females                             | 0.0042%              | -   | -     | -       | -       | 0.0024% | 0.0097% | 0.0212% | 0.0263% | 0.0207% | 0.0053%                   |
| Asian/Pacific Islander <sup>c</sup> | 0.0041%              | -   | -     | -       | -       | 0.0008% | 0.0049% | 0.0172% | 0.0255% | 0.0330% | 0.0046%                   |
| Males                               | 0.0063%              | -   | -     | -       | -       | 0.0015% | 0.0082% | 0.0301% | 0.0418% | 0.0572% | 0.0078%                   |
| Females                             | 0.0021%              | -   | -     | -       | -       | -       | 0.0019% | 0.0065% | 0.0136% | 0.0168% | 0.0022%                   |
| Hispanic <sup>d</sup>               | 0.0023%              | -   | -     | -       | 0.0006% | 0.0012% | 0.0064% | 0.0182% | 0.0246% | 0.0237% | 0.0046%                   |
| Males                               | 0.0036%              | -   | -     | -       | 0.0009% | 0.0019% | 0.0107% | 0.0350% | 0.0475% | 0.0460% | 0.0086%                   |
| Females                             | 0.0009%              | -   | -     | -       | -       | -       | 0.0024% | 0.0042% | 0.0081% | 0.0109% | 0.0015%                   |

<sup>a</sup> US 2005 cancer prevalence counts are based on 2005 cancer prevalence proportions from the SEER registries and 1/1/2005 US population estimates based on the average of 2004 and 2005 population estimates from the US Bureau of the Census. Prevalence was calculated using the First Malignant Primary Only for a person.  
<sup>b c d</sup> Statistics based on (b) SEER 9 Areas (c) SEER 11 Areas and Rural Georgia (d) NHIA for Hispanic for SEER 11 Areas and Rural Georgia.  
<sup>e</sup> Maximum limited-duration prevalence: 30 years for 1975-2005 SEER 9 data; 15 years for 1990-2005 SEER 11 data (used to calculate prevalence for Hispanics and Asian Pacific Islanders).  
<sup>f</sup> Percentages are age-adjusted to the 2000 US Standard Population (19 age groups - Census P25-1130) by 5-year age groups.  
<sup>g h</sup> (g) Cases diagnosed more than 30 years ago were estimated using the completeness index method (Capocaccia et. al. 1997, Merrill et. al. 2000). (h) Complete prevalence is obtained by summing 0 to <30 and >=30.  
 - Statistic not shown. Statistic based on fewer than 5 cases estimated alive in SEER for the time interval.  
 + Not available.

Table VIII-17

ESOPHAGUS CANCER (Invasive)

Percent Distribution and Counts by Histology among Histologically Confirmed Cases, 2001-2005  
Both Sexes by Race

| Histology <sup>a</sup>  | All Races |         | White  |         | Black |         | API   |         | AI/AN |         | Hispanic <sup>b</sup> |         |
|---|-----------|---------|--------|---------|-------|---------|-------|---------|-------|---------|-----------------------|---------|
|   | Count     | Percent | Count  | Percent | Count | Percent | Count | Percent | Count | Percent | Count                 | Percent |
| Carcinoma   | 15,493    | 99.1%   | 12,978 | 99.1%   | 1,709 | 99.5%   | 668   | 99.3%   | 68    | 100.0%  | 1,023                 | 99.0%   |
| Epidermoid carcinoma <sup>c</sup>   | 5,926     | 37.9%   | 3,974  | 30.3%   | 1,413 | 82.3%   | 482   | 71.6%   | 35    | 51.5%   | 449                   | 43.5%   |
| (8051-8131)   |           |         |        |         |       |         |       |         |       |         |                       |         |
| Squamous cell carcinoma   | 5,906     | 37.8%   | 3,956  | 30.2%   | 1,412 | 82.2%   | 481   | 71.5%   | 35    | 51.5%   | 447                   | 43.3%   |
| (8070-8078, 8083-8084)  |           |         |        |         |       |         |       |         |       |         |                       |         |
| Adenocarcinoma  | 8,676     | 55.5%   | 8,253  | 63.0%   | 205   | 11.9%   | 150   | 22.3%   | 26    | 38.2%   | 525                   | 50.8%   |
| (8050,8140-8147,8160-8162,<br>8180-8221,8250-8507,8514,<br>8520-8551,8560,8570-8574,<br>8576,8940-8941)   |           |         |        |         |       |         |       |         |       |         |                       |         |
| Other specific carcinomas   | 245       | 1.6%    | 200    | 1.5%    | 24    | 1.4%    | 17    | 2.5%    | -     | -       | -                     | -       |
| (8012-8015,8030-8046,<br>8150-8155,8170-8175,<br>8230-8249,8508,8510-8513,<br>8561-8562,8575,8580-8671)   |           |         |        |         |       |         |       |         |       |         |                       |         |
| Unspecified, Carcinoma, NOS   | 646       | 4.1%    | 551    | 4.2%    | 67    | 3.9%    | 19    | 2.8%    | -     | -       | 36                    | 3.5%    |
| (8010-8011,8020-8022)   |           |         |        |         |       |         |       |         |       |         |                       |         |
| Other specific types <sup>d</sup>   | 49        | 0.3%    | 41     | 0.3%    | -     | -       | -     | -       | -     | -       | -                     | -       |
| (8680-8713,8720-8790,<br>8800-8921,8930-8936,<br>8950-9030,9040-9044,<br>9060-9110,9120-9136,<br>9150-9252,9260-9365,<br>9370-9373,9380-9539,<br>9540-9582) |           |         |        |         |       |         |       |         |       |         |                       |         |
| Unspecified (8000-8005)   | 86        | 0.6%    | 80     | 0.6%    | -     | -       | -     | -       | -     | -       | -                     | -       |
| Total   | 15,628    | 100.0%  | 13,099 | 100.0%  | 1,717 | 100.0%  | 673   | 100.0%  | 68    | 100.0%  | 1,033                 | 100.0%  |

Source: SEER 17 areas (San Francisco, Connecticut, Detroit, Hawaii, Iowa, New Mexico, Seattle, Utah, Atlanta, San Jose-Monterey, Los Angeles, Alaska Native Registry, Rural Georgia, California excluding SF/SJM/LA, Kentucky, Louisiana and New Jersey). Percents may not sum to 100 due to rounding.

<sup>-</sup> Statistic not shown due to fewer than 16 cases during the time period.

<sup>a</sup> Excludes Kaposi Sarcoma, mesothelioma, lymphomas, leukemias, myelomas, lymphoreticular, and immunoproliferative diseases.

<sup>b</sup> Hispanic is not mutually exclusive from whites, blacks, Asian/Pacific Islanders, and American Indians/Alaska Natives.

<sup>c</sup> Underlying incidence data for Hispanics are based on NHIA and exclude cases from the Alaska Native Registry and Kentucky.

<sup>c</sup> Epidermoid carcinoma includes squamous, basal, and transitional cell carcinomas.

<sup>d</sup> Other specific types includes sarcomas and other soft tissue tumors.

# SEER Incidence, Delay Adjusted Incidence and US Death Rates<sup>a</sup> Esophagus Cancer, by Race and Sex

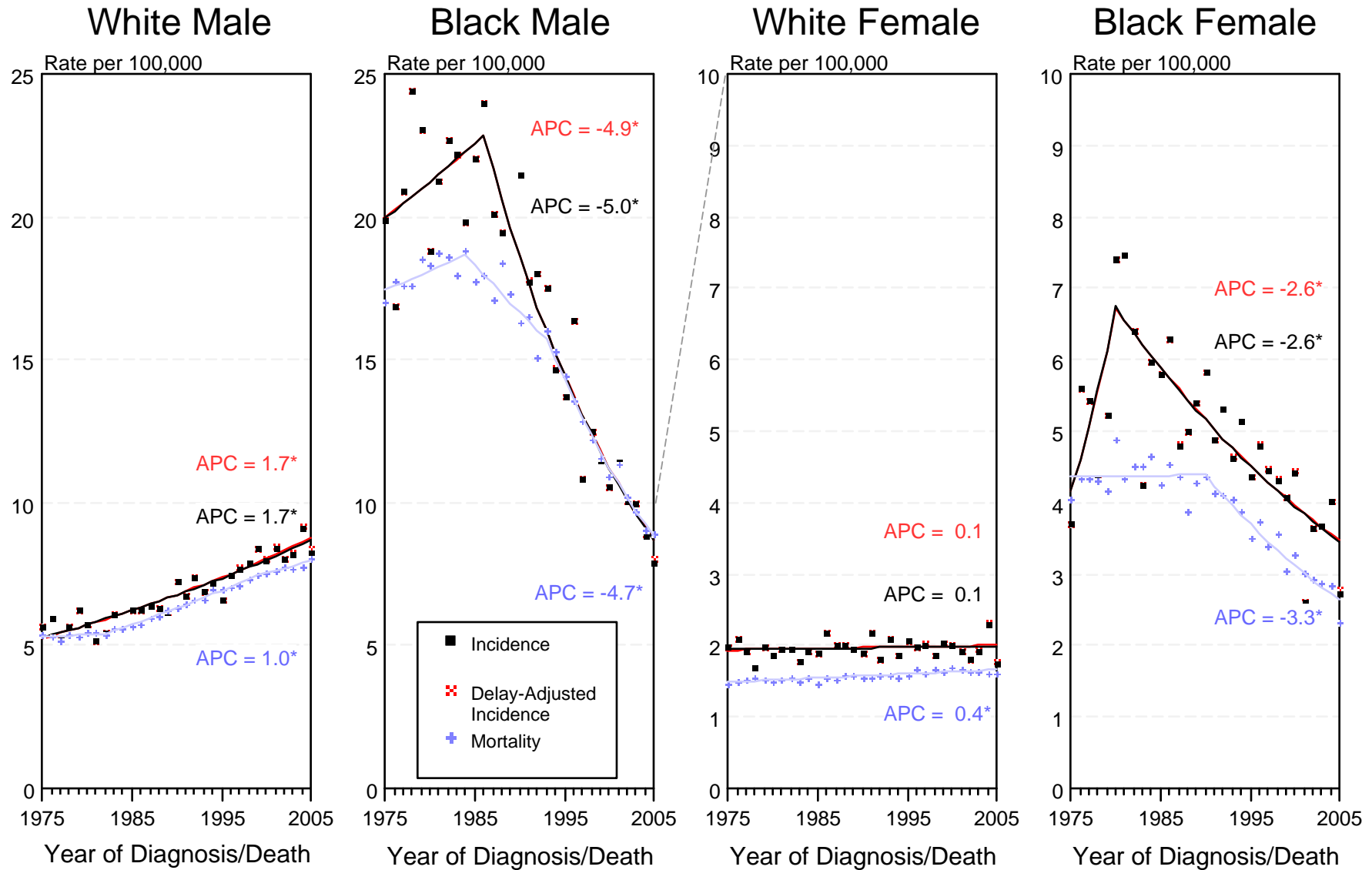


Figure VIII-1

<sup>a</sup> Source: SEER 9 areas and US Mortality Files (National Center for Health Statistics, CDC). Rates are age-adjusted to the 2000 US Std Population (19 age groups - Census P25-1103). Regression lines and APCs are calculated using the Joinpoint Regression Program Version 3.3.1, April 2008, National Cancer Institute. The APC is the Annual Percent Change for the regression line segments. The APC shown on the graph is for the most recent trend.

\* The APC is significantly different from zero ( $p < 0.05$ ).



# SEER Incidence and US Death Rates<sup>a</sup> Esophagus Cancer, Both Sexes

Joinpoint Analyses for Whites and Blacks from 1975-2005

and for Asian/Pacific Islanders, American Indians/Alaska Natives and Hispanics from 1992-2005

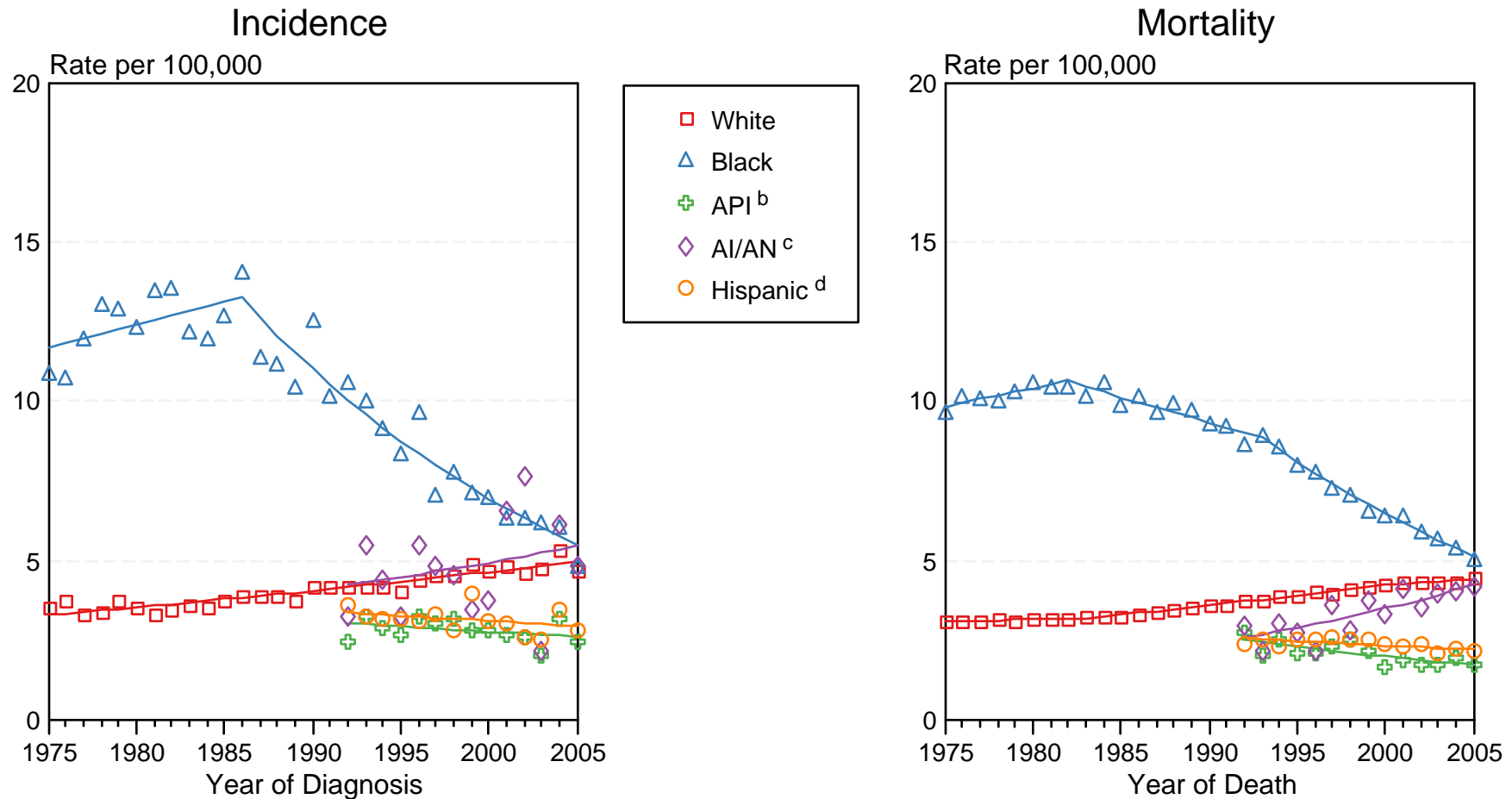


Figure VIII-2

Source: Incidence data for whites and blacks are from the SEER 9 areas (San Francisco, Connecticut, Detroit, Hawaii, Iowa, New Mexico, Seattle, Utah, Atlanta).

Incidence data for Asian/Pacific Islanders, American Indians/Alaska Natives and Hispanics are from the SEER 13 Areas (SEER 9 Areas, San Jose-Monterey, Los Angeles, Alaska Native Registry and Rural Georgia). Mortality data are from US Mortality Files, National Center for Health Statistics, CDC.

<sup>a</sup> Rates are age-adjusted to the 2000 US Std Population (19 age groups - Census P25-1103).

Regression lines are calculated using the Joinpoint Regression Program Version 3.3.1, April 2008, National Cancer Institute. Joinpoint analyses for Whites and Blacks during the 1975-2005 period allow a maximum of 4 joinpoints. Analyses for other ethnic groups during the period 1992-2005 allow a maximum of 3 joinpoints.

<sup>b</sup> API = Asian/Pacific Islander.

<sup>c</sup> AI/AN = American Indian/Alaska Native. Rates for American Indian/Alaska Native are based on the CHSDA(Contract Health Service Delivery Area) counties.

<sup>d</sup> Hispanic is not mutually exclusive from whites, blacks, Asian/Pacific Islanders, and American Indians/Alaska Natives. Incidence data for Hispanics are based on NHIA and exclude cases from the Alaska Native Registry. Mortality data for Hispanics exclude cases from Connecticut, Maine, Maryland, Minnesota, New Hampshire, New York, North Dakota, Oklahoma, and Vermont.