

Table 6.1
Cancer of the Colon and Rectum (Invasive)

Trends in SEER Incidence^{ab} and U.S. Mortality^c Using the Joinpoint Regression Program,
1975-2006 With up to Four Joinpoints, 1992-2006 With up to Two Joinpoints,
Both Sexes by Race/Ethnicity

	Joinpoint Trend 1		Joinpoint Trend 2		Joinpoint Trend 3		Joinpoint Trend 4		Joinpoint Trend 5		AAPC ^d	
	Years	APC	Years	APC	Years	APC	Years	APC	Years	APC	1997-2006	2002-2006
<u>SEER 9 Delay-Adjusted Incidence^a, 1975-2006</u>												
All Races	1975-1985	0.8*	1985-1995	-1.8*	1995-1998	1.6	1998-2006	-2.5*			-2.1*	-2.5*
White	1975-1985	0.8*	1985-1995	-2.0*	1995-1998	1.8	1998-2006	-2.7*			-2.2*	-2.7*
Black	1975-1980	3.2*	1980-2002	-0.1	2002-2006	-2.7*					-1.3*	-2.7*
<u>SEER 13 Delay-Adjusted Incidence^b, 1992-2006</u>												
All Races	1992-1995	-2.1*	1995-1998	1.8	1998-2006	-2.5*					-2.0*	-2.5*
White	1992-1995	-2.2*	1995-1998	1.9	1998-2006	-2.7*					-2.2*	-2.7*
Black	1992-2003	-0.1	2003-2006	-3.3							-1.2*	-2.5*
<u>SEER 9 Observed Incidence^a, 1975-2006</u>												
All Races	1975-1985	0.8*	1985-1995	-1.8*	1995-1998	1.1	1998-2002	-1.9*	2002-2006	-3.5*	-2.3*	-3.5*
White	1975-1985	0.8*	1985-1995	-2.0*	1995-1998	1.8	1998-2006	-2.9*			-2.4*	-2.9*
Black	1975-1980	3.2*	1980-2002	-0.2	2002-2006	-3.2*					-1.5*	-3.2*
<u>SEER 13 Observed Incidence^b, 1992-2006</u>												
All Races	1992-1995	-2.2*	1995-1998	1.9	1998-2006	-2.7*					-2.2*	-2.7*
White	1992-1995	-2.2*	1995-1998	2.0	1998-2006	-2.9*					-2.3*	-2.9*
White NH ^{ef}	1992-1995	-2.2*	1995-1998	2.0	1998-2006	-2.9*					-2.3*	-2.9*
Black	1992-2003	-0.2	2003-2006	-3.9*							-1.4*	-3.0*
Black NH ^{ef}	1992-2003	-0.2	2003-2006	-3.7*							-1.4*	-2.8*
API ^e	1992-2002	-0.3	2002-2006	-3.9*							-1.9*	-3.9*
AI/AN ^{eg}	1992-2006	-0.1									-0.1	-0.1
Hispanic ^e	1992-1995	-1.5	1995-1998	3.1	1998-2006	-1.7*					-1.1*	-1.7*
<u>U.S. Cancer Mortality^c, 1975-2006</u>												
All Races												
White												
Black												
<u>U.S. Cancer Mortality^c, 1992-2006</u>												
All Races												
White												
White NH ^{ef}												
Black												
Black NH ^{ef}												
API ^e												
AI/AN ^{eg}												
Hispanic ^e												

Joinpoint Regression Program Version 3.3.1, April 2008, National Cancer Institute. (<http://srab.cancer.gov/joinpoint/>).

The APC is the Annual Percent Change based on rates age-adjusted to the 2000 US Std Population (19 age groups - Census P25-1130).

^a Trends are from the SEER 9 areas (San Francisco, Connecticut, Detroit, Hawaii, Iowa, New Mexico, Seattle, Utah, and Atlanta).

^b Trends are from the SEER 13 areas (SEER 9 Areas, Los Angeles, San Jose-Monterey, Rural Georgia, and the Alaska Native Registry).

^c Trends are from US Mortality Files, National Center for Health Statistics, Centers for Disease Control and Prevention.

^d The AAPC is the Average Annual Percent Change and is based on the APCs calculated by Joinpoint.

^e API - Asian/Pacific Islander, AI/AN - American Indian/Alaska Native, NH - Non-Hispanic

^f Hispanic and Non-Hispanic are not mutually exclusive from whites, blacks, Asian/Pacific Islanders, and American Indians/Alaska

Natives. Incidence data for Hispanics and Non-Hispanics are based on NHIA and exclude cases from the Alaska Native Registry.

The Hispanic and Non-Hispanic mortality trends exclude deaths from CT, ME, MD, MN, NH, NY, ND, OK and VT.

^g Data for American Indian/Alaska Native are based on the CHSDA (Contract Health Service Delivery Area) counties.

* The APC/AAPC is significantly different from zero ($p < .05$).

- Joinpoint regression line analysis could not be performed on data series.

Table 6.2
Cancer of the Colon and Rectum (Invasive)

Trends in SEER Incidence^{ab} and U.S. Mortality^c Using the Joinpoint Regression Program,
1975-2006 With up to Four Joinpoints, 1992-2006 With up to Two Joinpoints,
Males by Race/Ethnicity

	Joinpoint Trend 1		Joinpoint Trend 2		Joinpoint Trend 3		Joinpoint Trend 4		Joinpoint Trend 5		AAPC ^d	
	Years	APC	Years	APC	Years	APC	Years	APC	Years	APC	1997-2006	2002-2006
<u>SEER 9 Delay-Adjusted Incidence^a, 1975-2006</u>												
All Races	1975-1985	1.1*	1985-1991	-1.2*	1991-1995	-3.2*	1995-1998	2.1	1998-2006	-3.0*	-2.5*	-3.0*
White	1975-1985	1.1*	1985-1991	-1.4*	1991-1995	-3.3*	1995-1998	2.1	1998-2006	-3.2*	-2.6*	-3.2*
Black	1975-1989	1.4*	1989-2006	-0.8*							-0.8*	-0.8*
<u>SEER 13 Delay-Adjusted Incidence^b, 1992-2006</u>												
All Races	1992-1995	-2.6*	1995-1998	1.7	1998-2006	-2.9*					-2.4*	-2.9*
White	1992-1995	-2.8*	1995-1998	1.8	1998-2006	-3.2*					-2.6*	-3.2*
Black	1992-2004	-0.3	2004-2006	-7.5							-1.9	-3.9
<u>SEER 9 Observed Incidence^a, 1975-2006</u>												
All Races	1975-1986	1.1*	1986-1995	-2.1*	1995-1998	1.1	1998-2004	-2.6*	2004-2006	-5.7*	-2.9*	-4.2*
White	1975-1985	1.1*	1985-1991	-1.4*	1991-1995	-3.3*	1995-1998	2.2	1998-2006	-3.3*	-2.7*	-3.3*
Black	1975-1980	4.6	1980-2003	0.0	2003-2006	-6.5*					-2.2*	-4.9*
<u>SEER 13 Observed Incidence^b, 1992-2006</u>												
All Races	1992-1995	-2.7*	1995-1998	1.8	1998-2006	-3.1*					-2.6*	-3.1*
White	1992-1995	-2.9*	1995-1998	1.8	1998-2006	-3.3*					-2.8*	-3.3*
White NH ^{ef}	1992-1995	-3.0*	1995-1998	1.8	1998-2006	-3.3*					-2.8*	-3.3*
Black	1992-2004	-0.3	2004-2006	-8.3							-2.2*	-4.4
Black NH ^{ef}	1992-2004	-0.3	2004-2006	-8.0							-2.1	-4.2
API ^e	1992-2002	-0.5	2002-2006	-4.5*							-2.3*	-4.5*
AI/AN ^{eg}	1992-2006	-0.9									-0.9	-0.9
Hispanic ^e	1992-1998	1.7	1998-2006	-2.1*							-1.7*	-2.1*
<u>U.S. Cancer Mortality^c, 1975-2006</u>												
All Races												
White												
Black												
<u>U.S. Cancer Mortality^c, 1992-2006</u>												
All Races												
White												
White NH ^{ef}												
Black												
Black NH ^{ef}												
API ^e												
AI/AN ^{eg}												
Hispanic ^e												

Joinpoint Regression Program Version 3.3.1, April 2008, National Cancer Institute. (<http://srab.cancer.gov/joinpoint/>).

The APC is the Annual Percent Change based on rates age-adjusted to the 2000 US Std Population (19 age groups - Census P25-1130).

^a Trends are from the SEER 9 areas (San Francisco, Connecticut, Detroit, Hawaii, Iowa, New Mexico, Seattle, Utah, and Atlanta).

^b Trends are from the SEER 13 areas (SEER 9 Areas, Los Angeles, San Jose-Monterey, Rural Georgia, and the Alaska Native Registry).

^c Trends are from US Mortality Files, National Center for Health Statistics, Centers for Disease Control and Prevention.

^d The AAPC is the Average Annual Percent Change and is based on the APCs calculated by Joinpoint.

^e API - Asian/Pacific Islander, AI/AN - American Indian/Alaska Native, NH - Non-Hispanic

^f Hispanic and Non-Hispanic are not mutually exclusive from whites, blacks, Asian/Pacific Islanders, and American Indians/Alaska

Natives. Incidence data for Hispanics and Non-Hispanics are based on NHIA and exclude cases from the Alaska Native Registry.

The Hispanic and Non-Hispanic mortality trends exclude deaths from CT, ME, MD, MN, NH, NY, ND, OK and VT.

^g Data for American Indian/Alaska Native are based on the CHSDA (Contract Health Service Delivery Area) counties.

* The APC/AAPC is significantly different from zero ($p < .05$).

- Joinpoint regression line analysis could not be performed on data series.

Table 6.3
Cancer of the Colon and Rectum (Invasive)

Trends in SEER Incidence^{ab} and U.S. Mortality^c Using the Joinpoint Regression Program,
1975-2006 With up to Four Joinpoints, 1992-2006 With up to Two Joinpoints,
Females by Race/Ethnicity

	Joinpoint Trend 1		Joinpoint Trend 2		Joinpoint Trend 3		Joinpoint Trend 4		Joinpoint Trend 5		AAPC ^d	
	Years	APC	Years	APC	Years	APC	Years	APC	Years	APC	1997-2006	2002-2006
<u>SEER 9 Delay-Adjusted Incidence^a, 1975-2006</u>												
All Races	1975-1985	0.3	1985-1995	-1.8*	1995-1998	1.9	1998-2006	-2.2*			-1.7*	-2.2*
White	1975-1985	0.3	1985-1995	-2.0*	1995-1998	2.2	1998-2006	-2.4*			-1.9*	-2.4*
Black	1975-2006	-0.2									-0.2*	-0.2*
<u>SEER 13 Delay-Adjusted Incidence^b, 1992-2006</u>												
All Races	1992-1995	-1.8	1995-1998	2.0	1998-2006	-2.2*					-1.7*	-2.2*
White	1992-1995	-1.7	1995-1998	2.0	1998-2006	-2.4*					-1.9*	-2.4*
Black	1992-2000	0.4	2000-2006	-1.5*							-0.9*	-1.5*
<u>SEER 9 Observed Incidence^a, 1975-2006</u>												
All Races	1975-1985	0.3	1985-1995	-1.9*	1995-1998	2.0	1998-2006	-2.4*			-1.9*	-2.4*
White	1975-1985	0.3	1985-1995	-2.1*	1995-1998	2.2	1998-2006	-2.6*			-2.1*	-2.6*
Black	1975-1980	2.8	1980-2006	-0.4*							-0.4*	-0.4*
<u>SEER 13 Observed Incidence^b, 1992-2006</u>												
All Races	1992-1995	-1.9*	1995-1998	2.0	1998-2006	-2.3*					-1.9*	-2.3*
White	1992-1995	-1.8	1995-1998	2.0	1998-2006	-2.6*					-2.1*	-2.6*
White NH ^{ef}	1992-1995	-1.7	1995-1998	2.2	1998-2006	-2.6*					-2.1*	-2.6*
Black	1992-2000	0.4	2000-2006	-1.8*							-1.1*	-1.8*
Black NH ^{ef}	1992-2000	0.3	2000-2006	-1.7*							-1.0*	-1.7*
API ^e	1992-2006	-0.8*									-0.8*	-0.8*
AI/AN ^{eg}	1992-2006	0.8									0.8	0.8
Hispanic ^e	1992-2006	-0.4*									-0.4*	-0.4*
<u>U.S. Cancer Mortality^c, 1975-2006</u>												
All Races												
White												
Black												
<u>U.S. Cancer Mortality^c, 1992-2006</u>												
All Races												
White												
White NH ^{ef}												
Black												
Black NH ^{ef}												
API ^e												
AI/AN ^{eg}												
Hispanic ^e												

Joinpoint Regression Program Version 3.3.1, April 2008, National Cancer Institute. (<http://srab.cancer.gov/joinpoint/>).

The APC is the Annual Percent Change based on rates age-adjusted to the 2000 US Std Population (19 age groups - Census P25-1130).

^a Trends are from the SEER 9 areas (San Francisco, Connecticut, Detroit, Hawaii, Iowa, New Mexico, Seattle, Utah, and Atlanta).

^b Trends are from the SEER 13 areas (SEER 9 Areas, Los Angeles, San Jose-Monterey, Rural Georgia, and the Alaska Native Registry).

^c Trends are from US Mortality Files, National Center for Health Statistics, Centers for Disease Control and Prevention.

^d The AAPC is the Average Annual Percent Change and is based on the APCs calculated by Joinpoint.

^e API - Asian/Pacific Islander, AI/AN - American Indian/Alaska Native, NH - Non-Hispanic

^f Hispanic and Non-Hispanic are not mutually exclusive from whites, blacks, Asian/Pacific Islanders, and American Indians/Alaska

Natives. Incidence data for Hispanics and Non-Hispanics are based on NHIA and exclude cases from the Alaska Native Registry.

The Hispanic and Non-Hispanic mortality trends exclude deaths from CT, ME, MD, MN, NH, NY, ND, OK and VT.

^g Data for American Indian/Alaska Native are based on the CHSDA (Contract Health Service Delivery Area) counties.

* The APC/AAPC is significantly different from zero ($p < .05$).

- Joinpoint regression line analysis could not be performed on data series.

Table 6.4
Cancer of the Colon (Invasive) and Cancer of the Rectum (Invasive)

Trends in SEER 9 Observed Incidence^a Using the Joinpoint Regression Program,
1975-2006 With up to Four Joinpoints,
By Race and Sex

		<u>Joinpoint Trend 1</u>		<u>Joinpoint Trend 2</u>		<u>Joinpoint Trend 3</u>		<u>Joinpoint Trend 4</u>		<u>Joinpoint Trend 5</u>		<u>AAPC^b</u>
		Years	APC	Years	APC	Years	APC	Years	APC	Years	APC	2002-2006
<u>SEER 9 Observed Incidence^a for Cancer of the Colon, 1975-2006</u>												
All Races	Both Sexes	1975-1985	1.2*	1985-1995	-1.7*	1995-1998	0.6	1998-2002	-1.6*	2002-2006	-3.8*	-3.8*
All Races	Male	1975-1985	1.7*	1985-2002	-1.5*	2002-2006	-4.3*					-4.3*
All Races	Female	1975-1985	0.6*	1985-1993	-1.8*	1993-2001	-0.2	2001-2006	-3.2*			-3.2*
White	Both Sexes	1975-1985	1.1*	1985-1995	-1.9*	1995-1998	1.0	1998-2002	-2.0*	2002-2006	-3.7*	-3.7*
White	Male	1975-1985	1.7*	1985-1991	-1.4*	1991-1995	-3.1*	1995-1998	1.7	1998-2006	-3.3*	-3.3*
White	Female	1975-1985	0.6*	1985-1993	-2.1*	1993-2001	-0.2	2001-2006	-3.4*			-3.4*
Black	Both Sexes	1975-1991	0.8*	1991-2006	-1.0*							-1.0*
Black	Male	1975-1990	1.5*	1990-2006	-1.1*							-1.1*
Black	Female	1975-2006	-0.2*									-0.2*
<u>SEER 9 Observed Incidence^a for Cancer of the Rectum, 1975-2006</u>												
All Races	Both Sexes	1975-1987	-0.3	1987-1995	-2.4*	1995-1998	2.9	1998-2006	-2.8*			-2.8*
All Races	Male	1975-1989	-0.3	1989-1994	-3.5*	1994-1999	1.2	1999-2006	-3.5*			-3.5*
All Races	Female	1975-1984	-0.2	1984-1995	-2.2*	1995-1998	2.6	1998-2006	-2.6*			-2.6*
White	Both Sexes	1975-1985	-0.1	1985-1995	-2.3*	1995-1998	2.7	1998-2006	-3.1*			-3.1*
White	Male	1975-1989	-0.3	1989-1994	-4.0*	1994-1999	1.2	1999-2006	-3.7*			-3.7*
White	Female	1975-1984	-0.2	1984-1995	-2.3*	1995-1998	2.8	1998-2006	-3.0*			-3.0*
Black	Both Sexes	1975-2006	-0.2									-0.2
Black	Male	1975-2004	0.1	2004-2006	-10.4							-5.3
Black	Female	1975-2006	-0.3									-0.3

Joinpoint Regression Program Version 3.3.1, April 2008, National Cancer Institute. (<http://srab.cancer.gov/joinpoint/>).

The APC is the Annual Percent Change based on rates age-adjusted to the 2000 US Std Population (19 age groups - Census P25-1130).

Trends are from the SEER 9 areas (San Francisco, Connecticut, Detroit, Hawaii, Iowa, New Mexico, Seattle, Utah, and Atlanta).

The AAPC is the Average Annual Percent Change and is based on the APCs calculated by Joinpoint.

* The APC/AAPC is significantly different from zero ($p < .05$).

- Joinpoint regression line analysis could not be performed on data series.

a
b
*
-

Table 6.5
Cancer of the Colon and Rectum (Invasive)

Age-adjusted SEER Incidence^a Rates by Year, Race and Sex

Year of Diagnosis:	All Races			Whites			Blacks		
	Total	Males	Females	Total	Males	Females	Total	Males	Females
1975	59.51	68.40	53.64	60.17	69.72	54.04	56.85	59.33	54.66
1976	61.36	71.74	54.15	62.15	72.67	55.03	55.06	58.53	51.32
1977	62.40	73.50	54.95	63.19	74.32	55.76	60.72	75.75	51.47
1978	62.04	72.37	55.25	62.77	73.89	55.58	62.16	65.70	60.64
1979	62.37	74.11	54.57	62.95	75.20	54.94	58.57	61.64	56.29
1980	63.74	74.53	56.53	63.94	74.87	56.82	70.76	79.68	64.12
1981	64.24	75.84	56.49	64.89	76.72	57.14	62.78	72.81	55.94
1982	62.78	75.19	54.50	63.44	76.27	55.04	61.25	68.97	55.92
1983	63.67	75.58	55.62	64.28	76.56	56.07	66.61	75.39	61.14
1984	64.82	77.68	56.07	65.83	79.27	56.73	62.26	70.26	57.98
1985	66.31	79.14	57.37	67.22	80.18	58.43	63.87	74.12	56.27
1986	64.18	77.77	54.72	64.60	78.92	54.74	64.52	72.90	58.61
1987	62.71	77.47	52.67	62.88	78.20	52.62	66.21	77.48	59.01
1988	61.36	75.17	51.80	61.52	75.75	51.70	63.14	72.41	56.91
1989	61.67	74.94	52.41	61.95	75.42	52.67	64.38	79.28	54.60
1990	60.69	74.33	51.29	60.66	74.73	51.05	66.63	74.71	61.58
1991	59.47	72.89	50.05	59.28	73.08	49.67	65.59	76.29	58.16
1992	57.98	70.41	49.18	57.83	70.68	48.71	65.41	78.35	57.31
1993	56.80	68.42	48.32	56.34	68.08	47.82	64.33	77.85	55.14
1994	55.60	66.25	47.69	55.34	66.30	47.13	64.47	75.33	57.98
1995	54.02	63.77	46.93	53.67	63.37	46.58	61.97	71.10	56.15
1996	54.72	65.47	46.68	54.73	65.84	46.41	58.26	66.62	52.53
1997	56.40	68.09	47.94	56.41	67.93	48.06	64.23	77.07	55.88
1998	56.71	66.94	49.27	56.66	67.15	49.02	62.68	73.79	55.77
1999	55.44	65.62	47.85	55.24	65.73	47.20	63.07	71.71	58.04
2000	54.05	63.56	46.69	53.70	62.95	46.45	64.05	73.68	57.71
2001	53.32	62.59	46.04	52.69	62.16	45.17	63.73	74.08	57.04
2002	52.71	60.87	46.31	51.95	59.73	45.71	62.10	72.75	55.38
2003	50.26	58.78	43.47	49.78	58.01	43.07	61.05	73.35	53.30
2004	49.16	57.75	42.51	48.35	57.25	41.34	60.86	71.89	53.50
2005	46.70	53.78	41.06	46.35	53.75	40.34	55.52	61.16	52.24
2006	45.45	51.29	40.69	44.64	50.58	39.68	55.41	61.49	51.37
1975-2006	57.38	67.95	49.71	57.55	68.33	49.75	62.26	71.77	56.05

^a SEER 9 areas (San Francisco, Connecticut, Detroit, Hawaii, Iowa, New Mexico, Seattle, Utah, and Atlanta). Rates are per 100,000 and are age-adjusted to the 2000 US Std Population (19 age groups - Census P25-1130).
- Statistic not shown. Rate based on less than 16 cases for the time interval.

Table 6.6
Cancer of the Colon (Invasive)

Age-adjusted SEER Incidence^a Rates by Year, Race and Sex

Year of Diagnosis:	All Races			Whites			Blacks		
	Total	Males	Females	Total	Males	Females	Total	Males	Females
1975	41.33	45.36	38.89	41.71	46.10	39.15	42.83	44.14	41.64
1976	43.06	47.76	39.96	43.45	48.19	40.41	43.11	43.60	41.95
1977	43.97	49.55	40.36	44.66	50.06	41.19	45.42	58.42	37.66
1978	43.85	49.13	40.59	44.11	49.87	40.61	47.77	48.81	47.88
1979	43.77	50.20	39.61	44.10	51.03	39.70	44.68	45.58	43.97
1980	45.56	50.67	42.33	45.58	50.88	42.32	55.12	58.32	52.74
1981	45.47	51.34	41.72	45.89	51.96	42.11	46.86	50.64	44.36
1982	45.75	53.45	40.66	46.07	54.09	40.84	48.27	52.48	45.19
1983	46.11	53.02	41.64	46.41	53.46	41.88	50.15	58.40	45.25
1984	46.51	54.61	41.31	47.04	55.57	41.58	48.56	54.02	45.83
1985	47.89	55.02	43.01	48.43	55.59	43.70	49.87	57.34	44.21
1986	46.79	54.36	41.58	47.07	55.21	41.51	49.20	55.04	45.46
1987	45.24	54.42	39.17	45.15	54.52	39.09	51.35	59.84	45.73
1988	44.30	52.59	38.66	44.25	52.85	38.39	48.93	54.02	45.61
1989	44.35	52.41	38.95	44.48	52.49	39.20	48.85	60.28	41.54
1990	44.19	51.96	38.93	44.06	51.98	38.76	52.02	57.69	48.57
1991	43.60	51.84	37.91	43.29	51.85	37.41	51.74	57.75	47.67
1992	42.28	49.65	37.20	42.05	49.77	36.71	50.79	60.21	45.17
1993	41.60	48.93	36.32	41.07	48.62	35.67	51.10	60.40	45.02
1994	40.82	46.93	36.31	40.61	47.03	35.79	50.11	57.03	46.30
1995	39.64	45.02	35.86	39.29	44.64	35.47	48.74	54.79	45.42
1996	39.34	45.31	34.88	39.30	45.75	34.46	44.45	48.40	41.84
1997	41.09	48.41	35.95	41.11	48.30	36.13	49.03	58.76	42.46
1998	41.00	46.76	37.01	40.92	47.04	36.60	47.41	54.38	43.71
1999	39.79	45.36	35.70	39.56	45.35	35.16	48.43	54.70	44.91
2000	39.30	44.34	35.44	38.92	43.82	35.13	50.85	57.16	46.89
2001	39.04	43.79	35.39	38.63	43.56	34.76	48.62	55.13	44.49
2002	38.37	42.86	34.87	37.68	41.83	34.37	48.72	56.09	44.03
2003	36.59	40.95	33.08	36.26	40.30	32.90	46.62	55.27	41.25
2004	35.80	40.80	32.05	35.24	40.54	31.21	46.39	53.21	41.91
2005	33.70	37.02	31.08	33.48	37.16	30.50	42.54	45.91	40.87
2006	32.95	35.93	30.51	32.42	35.46	29.87	42.76	46.52	40.16
1975-2006	41.43	47.32	37.25	41.46	47.51	37.18	48.04	54.25	44.13

^a SEER 9 areas (San Francisco, Connecticut, Detroit, Hawaii, Iowa, New Mexico, Seattle, Utah, and Atlanta). Rates are per 100,000 and are age-adjusted to the 2000 US Std Population (19 age groups - Census P25-1130).
- Statistic not shown. Rate based on less than 16 cases for the time interval.

Table 6.7
Cancer of the Rectum (Invasive)

Age-adjusted SEER Incidence^a Rates by Year, Race and Sex

Year of Diagnosis:	All Races			Whites			Blacks		
	Total	Males	Females	Total	Males	Females	Total	Males	Females
1975	18.18	23.04	14.75	18.45	23.62	14.89	14.02	15.19	13.01
1976	18.30	23.98	14.19	18.70	24.48	14.63	11.96	14.93	9.37
1977	18.43	23.95	14.59	18.53	24.26	14.58	15.30	17.33	13.81
1978	18.19	23.25	14.66	18.67	24.02	14.97	14.39	16.89	12.76
1979	18.60	23.91	14.96	18.85	24.17	15.24	13.90	16.06	12.31
1980	18.18	23.86	14.20	18.36	23.99	14.51	15.65	21.36	11.38
1981	18.77	24.50	14.77	19.00	24.76	15.02	15.92	22.17	11.59
1982	17.03	21.74	13.84	17.38	22.18	14.20	12.98	16.49	10.73
1983	17.56	22.55	13.98	17.87	23.11	14.19	16.47	16.99	15.89
1984	18.30	23.07	14.76	18.79	23.70	15.15	13.71	16.24	12.15
1985	18.42	24.12	14.36	18.79	24.59	14.72	14.00	16.79	12.06
1986	17.39	23.41	13.13	17.53	23.71	13.23	15.32	17.86	13.15
1987	17.47	23.05	13.50	17.73	23.68	13.53	14.87	17.64	13.29
1988	17.06	22.58	13.14	17.27	22.90	13.31	14.21	18.38	11.30
1989	17.32	22.52	13.45	17.47	22.93	13.47	15.52	19.00	13.05
1990	16.51	22.37	12.36	16.61	22.75	12.29	14.61	17.02	13.01
1991	15.88	21.05	12.14	15.99	21.23	12.26	13.85	18.55	10.50
1992	15.71	20.76	11.98	15.77	20.90	11.99	14.62	18.14	12.14
1993	15.20	19.49	12.00	15.27	19.46	12.15	13.23	17.46	10.12
1994	14.78	19.32	11.38	14.73	19.27	11.34	14.36	18.30	11.68
1995	14.38	18.76	11.07	14.38	18.73	11.11	13.23	16.31	10.73
1996	15.39	20.16	11.80	15.43	20.09	11.95	13.81	18.22	10.69
1997	15.31	19.69	11.98	15.30	19.64	11.92	15.19	18.31	13.42
1998	15.70	20.19	12.26	15.74	20.11	12.41	15.27	19.41	12.07
1999	15.65	20.26	12.15	15.68	20.38	12.04	14.64	17.01	13.13
2000	14.75	19.22	11.25	14.78	19.14	11.32	13.19	16.53	10.82
2001	14.27	18.80	10.66	14.05	18.60	10.41	15.11	18.94	12.55
2002	14.34	18.01	11.43	14.27	17.90	11.35	13.38	16.65	11.35
2003	13.67	17.83	10.39	13.51	17.71	10.17	14.44	18.09	12.06
2004	13.36	16.95	10.46	13.10	16.72	10.13	14.47	18.68	11.59
2005	13.00	16.76	9.98	12.88	16.60	9.84	12.98	15.25	11.37
2006	12.50	15.37	10.18	12.21	15.12	9.81	12.65	14.97	11.21
1975-2006	15.95	20.63	12.46	16.09	20.82	12.57	14.22	17.52	11.92

^a SEER 9 areas (San Francisco, Connecticut, Detroit, Hawaii, Iowa, New Mexico, Seattle, Utah, and Atlanta). Rates are per 100,000 and are age-adjusted to the 2000 US Std Population (19 age groups - Census P25-1130).
- Statistic not shown. Rate based on less than 16 cases for the time interval.

Table 6.9
Cancer of the Colon and Rectum (Invasive)SEER Incidence^a and U.S. Death^b Rates, Age-Adjusted and Age-Specific Rates, by Race and Sex

	All Races			Whites			Blacks		
	Total	Males	Females	Total	Males	Females	Total	Males	Females
<u>SEER Incidence</u>									
<u>Age at Diagnosis</u>									
Age-Adjusted Rates, 2002-2006									
All ages	49.1	57.3	42.8	48.6	56.9	42.1	59.9	69.3	53.5
Under 65	18.2	20.8	15.7	17.5	20.1	15.0	24.5	27.3	22.2
65 and over	263.2	309.5	229.5	263.9	310.8	229.4	304.4	360.0	270.1
All ages (IARC world std) ^c	30.2	35.3	26.0	29.7	34.9	25.3	38.1	43.7	33.9
Age-Specific Rates, 2002-2006									
<1	-	-	-	-	-	-	-	-	-
1-4	-	-	-	-	-	-	-	-	-
5-9	-	-	-	-	-	-	-	-	-
10-14	0.1	-	-	0.1	-	-	-	-	-
15-19	0.3	0.2	0.3	0.3	0.2	0.3	-	-	-
20-24	0.9	0.7	1.0	0.9	0.8	1.1	0.7	-	-
25-29	1.9	2.0	1.8	2.0	2.1	1.8	1.1	1.1	1.2
30-34	4.2	4.2	4.2	4.1	4.2	4.0	4.6	4.0	5.2
35-39	7.9	8.5	7.3	7.7	8.4	7.0	8.7	9.3	8.2
40-44	14.8	15.3	14.3	14.1	14.4	13.8	18.3	20.6	16.3
45-49	27.7	30.1	25.3	26.8	29.4	24.2	33.9	34.9	33.1
50-54	53.9	60.8	47.1	51.2	58.7	43.9	75.7	80.5	71.6
55-59	76.7	90.3	63.8	73.3	87.1	60.1	107.3	124.8	92.7
60-64	114.2	137.3	93.1	111.1	134.2	89.5	163.2	190.2	141.7
65-69	173.6	208.5	143.4	171.2	206.3	140.2	217.7	253.9	190.2
70-74	230.2	280.3	189.9	230.5	281.2	188.9	273.3	325.5	236.7
75-79	293.5	347.7	254.7	294.8	348.6	255.8	340.8	404.5	301.5
80-84	353.6	405.7	320.9	357.3	410.4	323.9	392.1	466.0	351.3
85+	371.9	415.6	351.4	375.8	421.9	354.5	395.6	465.6	366.7
<u>U.S. Mortality</u>									
<u>Age at Death</u>									
Age-Adjusted Rates, 2002-2006									
All ages									
Under 65									
65 and over									
All ages (IARC world std) ^c									
Age-Specific Rates, 2002-2006									
<1									
1-4									
5-9									
10-14									
15-19									
20-24									
25-29									
30-34									
35-39									
40-44									
45-49									
50-54									
55-59									
60-64									
65-69									
70-74									
75-79									
80-84									
85+									

^a SEER 17 areas. Rates are per 100,000 and are age-adjusted to the 2000 US Std Population (19 age groups - Census P25-1130), unless noted.

^b US Mortality Files, National Center for Health Statistics, Centers for Disease Control and Prevention.

^c Rates are per 100,000 and are age-adjusted to the 2000 US Std Population (19 age groups - Census P25-1130), unless noted.

- Rates are per 100,000 and are age-adjusted to the IARC world standard population.

- Statistic not shown. Rate based on less than 16 cases for the time interval.

Table 6.10
Cancer of the Colon (Invasive) and Cancer of the Rectum (Invasive)
SEER Incidence^a Rates, Age-Adjusted and Age-Specific Rates, by Race and Sex

	All Races			Whites			Blacks		
	Total	Males	Females	Total	Males	Females	Total	Males	Females
<u>Cancer of the Colon</u>									
<u>Age at Diagnosis</u>									
Age-Adjusted Rates, 2002-2006									
All ages	35.5	40.0	32.0	35.1	39.7	31.5	46.0	52.3	41.8
Under 65	11.6	12.8	10.5	11.1	12.4	9.9	17.4	18.8	16.2
65 and over	200.6	228.0	180.8	201.0	228.4	181.0	243.7	284.3	218.8
All ages (IARC world std) ^b	21.2	23.9	18.9	20.8	23.6	18.4	28.7	32.3	26.1
Age-Specific Rates, 2002-2006									
<1	-	-	-	-	-	-	-	-	-
1-4	-	-	-	-	-	-	-	-	-
5-9	-	-	-	-	-	-	-	-	-
10-14	0.1	-	-	-	-	-	-	-	-
15-19	0.2	0.2	0.2	0.2	-	0.3	-	-	-
20-24	0.6	0.5	0.7	0.6	0.5	0.7	0.5	-	-
25-29	1.2	1.3	1.1	1.2	1.3	1.2	0.7	-	-
30-34	2.7	2.6	2.7	2.6	2.6	2.6	3.4	2.6	4.0
35-39	4.7	4.8	4.6	4.5	4.7	4.3	5.4	5.6	5.2
40-44	9.0	9.2	8.8	8.6	8.7	8.5	11.7	13.4	10.1
45-49	16.7	17.4	16.1	16.0	16.9	15.2	22.8	22.8	22.8
50-54	33.4	36.4	30.5	31.5	35.3	27.8	52.0	52.5	51.6
55-59	49.4	56.2	43.1	46.9	54.1	40.0	78.0	87.3	70.2
60-64	77.7	90.2	66.3	75.1	87.7	63.4	122.5	139.6	108.8
65-69	123.2	141.9	107.0	120.8	139.5	104.4	168.8	191.6	151.5
70-74	170.9	200.5	147.1	170.7	200.6	146.2	216.6	255.1	189.6
75-79	223.9	257.2	200.0	225.0	257.0	201.7	270.6	316.5	242.2
80-84	280.1	312.1	260.1	283.2	315.6	262.9	315.9	375.1	283.3
85+	300.6	326.4	288.6	303.8	331.3	291.1	334.4	388.0	312.3
<u>Cancer of the Rectum</u>									
<u>Age at Diagnosis</u>									
Age-Adjusted Rates, 2002-2006									
All ages	13.6	17.2	10.7	13.5	17.1	10.6	13.9	17.0	11.7
Under 65	6.5	7.9	5.3	6.4	7.7	5.1	7.1	8.5	6.0
65 and over	62.6	81.6	48.6	62.9	82.5	48.4	60.8	75.7	51.3
All ages (IARC world std) ^b	9.1	11.4	7.1	9.0	11.3	6.9	9.4	11.4	7.8
Age-Specific Rates, 2002-2006									
<1	-	-	-	-	-	-	-	-	-
1-4	-	-	-	-	-	-	-	-	-
5-9	-	-	-	-	-	-	-	-	-
10-14	-	-	-	-	-	-	-	-	-
15-19	0.1	-	-	-	-	-	-	-	-
20-24	0.3	0.2	0.3	0.3	0.2	0.4	-	-	-
25-29	0.7	0.7	0.7	0.7	0.8	0.7	-	-	-
30-34	1.5	1.6	1.4	1.5	1.6	1.4	1.3	1.4	1.1
35-39	3.2	3.6	2.8	3.2	3.7	2.7	3.3	3.7	3.0
40-44	5.8	6.2	5.5	5.5	5.7	5.3	6.7	7.3	6.2
45-49	11.0	12.7	9.2	10.8	12.4	9.1	11.1	12.1	10.3
50-54	20.5	24.4	16.6	19.7	23.4	16.0	23.7	28.0	20.0
55-59	27.2	34.1	20.7	26.4	33.0	20.1	29.3	37.5	22.5
60-64	36.5	47.1	26.8	36.0	46.6	26.2	40.7	50.5	32.8
65-69	50.4	66.6	36.4	50.4	66.9	35.8	48.9	62.3	38.7
70-74	59.3	79.8	42.8	59.7	80.6	42.7	56.7	70.3	47.1
75-79	69.6	90.5	54.7	69.8	91.6	54.1	70.2	87.9	59.3
80-84	73.5	93.5	60.9	74.1	94.9	61.0	76.2	90.9	68.1
85+	71.3	89.2	62.9	71.9	90.6	63.3	61.2	77.6	54.4

^a SEER 17 areas. Rates are per 100,000 and are age-adjusted to the 2000 US Std Population (19 age groups - Census P25-1130), unless noted.

^b Rates are per 100,000 and are age-adjusted to the IARC world standard population.

- Statistic not shown. Rate based on less than 16 cases for the time interval.

Table 6.11
Cancer of the Colon and Rectum (Invasive)

Survival Rates, by Race, Sex, Diagnosis Year, Stage and Age

	All Races			Whites			Blacks		
	Total	Males	Females	Total	Males	Females	Total	Males	Females
5-Year Relative Survival Rates									
Year of Diagnosis:									
1960-1963 ^a	-	-	-	-	-	-	-	-	-
1970-1973 ^a	-	-	-	-	-	-	-	-	-
1975-1977 ^b	50.8	49.8	51.6	50.9	50.1	51.7	46.1	44.5	47.1
1978-1980 ^b	52.5	51.6	53.4	52.9	51.9	53.8	46.2	44.3	47.5
1981-1983 ^b	55.4	55.1	55.7	55.8	55.8	55.8	47.5	43.9	50.3
1984-1986 ^b	58.5	58.4	58.6	59.2	59.2	59.3	49.1	48.2	49.8
1987-1989 ^b	60.6	60.9	60.4	61.1	61.6	60.6	53.4	51.2	55.3
1990-1992 ^b	62.4	62.4	62.4	63.2	63.1	63.2	53.8	55.5	52.3
1993-1995 ^b	60.9	60.4	61.4	61.5	61.0	62.1	53.0	51.8	54.0
1996-1998 ^b	63.5	63.1	63.9	64.1	63.6	64.5	55.2	55.3	55.1
1999-2005 ^b	66.8 ^e	67.1 ^e	66.4 ^e	68.0 ^e	68.4 ^e	67.5 ^e	57.0 ^e	56.5 ^e	57.2 ^e
5-Year Period Survival Rates^{cd}									
Year of Diagnosis:									
1999-2005	66.2	66.3	66.1	67.0	67.3	66.7	57.9	56.9	58.9
Stage Distribution (%) 1999-2005^c									
All Stages									
Number of cases	188,224	95,166	93,058	153,553	78,231	75,322	18,972	8,748	10,224
Percent	100%	100%	100%	100%	100%	100%	100%	100%	100%
Localized	39	39	38	39	40	38	34	34	34
Regional	37	37	38	37	37	38	35	36	35
Distant	19	19	19	19	19	19	24	25	24
Unstaged	5	4	5	5	4	5	6	5	6
5-Year Relative Survival Rates, 1999-2005^c									
Age at Diagnosis:									
Ages <45	67.4	66.4	68.4	69.1	67.9	70.4	59.1	57.9	60.2
Ages 45-54	68.7	67.7	69.8	69.8	68.8	71.1	58.5	56.8	60.2
Ages 55-64	67.4	66.9	68.0	67.4	67.9	69.2	58.5	57.8	59.3
Ages 65-74	66.6	66.5	66.7	67.3	67.1	67.4	58.1	57.0	58.8
Ages 75+	60.4	60.8	60.1	61.4	62.0	61.0	47.4	45.6	48.4
Ages <65	67.8	67.1	68.7	69.0	68.2	70.0	58.6	57.4	59.8
Ages 65+	63.4	64.0	63.0	64.3	64.9	63.7	53.2	52.6	53.6
Stage:									
All Stages	65.2	65.3	65.0	66.1	66.3	65.9	56.1	55.5	56.7
Localized	90.8	90.8	90.8	91.3	91.5	91.2	86.3	85.1	87.3
Regional	69.5	69.6	69.4	70.1	70.2	70.0	63.1	63.4	62.7
Distant	11.3	10.5	12.1	11.6	10.8	12.5	8.0	6.9	8.9
Unstaged	38.4	40.8	36.0	37.3	39.8	34.7	36.0	37.1	35.1

^a Rates are based on End Results data from a series of hospital registries and one population-based registry.

^b Rates are from the SEER 9 areas (San Francisco, Connecticut, Detroit, Hawaii, Iowa, New Mexico, Seattle, Utah, Atlanta).

Rates are based on follow-up of patients into 2006.

^c Rates are from the SEER 17 areas (San Francisco, Connecticut, Detroit, Hawaii, Iowa, New Mexico, Seattle, Utah, Atlanta, San Jose-Monterey, Los Angeles, Alaska Native Registry, Rural Georgia, California excluding SF/SJM/LA, Kentucky, Louisiana and New Jersey). California excluding SF/SJM/LA, Kentucky, Louisiana, and New Jersey contribute cases for diagnosis years 2000-2005.

The remaining 13 SEER Areas contribute cases for the entire period 1999-2005. Rates are based on follow-up of patients into 2006.

^d Period survival provides a more up-to-date estimate of survival by piecing together the most recent conditional survival estimates from several cohorts. It is computed here using three year calendar blocks (2003-2005: 0-1 year survival),

(2002-2004: 1-2 year survival), (2001-2003: 2-3 year survival), (2000-2002: 3-4 year survival), (1999-2001: 4-5 years survival).

^e The difference in rates between 1975-1977 and 1999-2005 is statistically significant ($p < .05$).

^f The standard error of the survival rate is between 5 and 10 percentage points.

^g The standard error of the survival rate is greater than 10 percentage points.

- Statistic could not be calculated due to fewer than 25 cases during the time period.

Table 6.12
Cancer of the Colon (Invasive)

Survival Rates, by Race, Sex, Diagnosis Year, Stage and Age

	All Races			Whites			Blacks		
	Total	Males	Females	Total	Males	Females	Total	Males	Females
5-Year Relative Survival Rates									
Year of Diagnosis:									
1960-1963 ^a	-	-	-	43	42	44	34	32	35
1970-1973 ^a	-	-	-	49	47	50	37	36	38
1975-1977 ^b	51.5	50.8	52.0	51.7	51.0	52.2	46.4	45.5	46.8
1978-1980 ^b	53.5	52.5	54.3	53.7	52.6	54.5	49.6	48.0	50.6
1981-1983 ^b	56.5	57.0	56.0	56.7	57.5	56.1	49.7	45.9	52.4
1984-1986 ^b	59.1	59.4	58.7	59.7	60.1	59.4	49.9	49.6	50.1
1987-1989 ^b	61.3	61.9	60.7	61.8	62.6	61.0	53.3	51.6	54.5
1990-1992 ^b	63.2	63.7	62.7	64.0	64.4	63.5	54.3	55.9	52.9
1993-1995 ^b	60.8	60.7	61.0	61.4	61.2	61.6	52.4	51.5	53.0
1996-1998 ^b	63.1	63.0	63.1	63.8	63.7	63.9	54.7	55.6	54.0
1999-2005 ^b	66.1 ^e	66.5 ^e	65.7 ^e	67.4 ^e	67.9 ^e	66.9 ^e	55.6 ^e	55.0 ^e	55.9 ^e
5-Year Period Survival Rates^{cd}									
Year of Diagnosis:									
1999-2005	65.5	66.0	65.2	66.4	66.9	65.9	57.4	56.8	57.9
Stage Distribution (%) 1999-2005^c									
All Stages									
Number of cases	133,516	64,273	69,243	108,927	52,861	56,066	14,337	6,383	7,954
Percent	100%	100%	100%	100%	100%	100%	100%	100%	100%
Localized	36	37	36	37	38	36	32	32	32
Regional	39	38	39	39	38	39	37	38	37
Distant	20	20	20	20	20	20	26	26	26
Unstaged	4	4	5	4	4	5	5	4	5
5-Year Relative Survival Rates, 1999-2005^c									
Age at Diagnosis:									
Ages <45	66.4	66.9	65.8	68.3	67.7	68.9	58.9	61.6	56.4
Ages 45-54	66.2	65.6	66.8	67.4	66.9	68.1	56.7	54.9	58.1
Ages 55-64	65.9	65.6	66.3	67.1	66.7	67.7	57.1	57.0	57.0
Ages 65-74	66.4	66.7	66.0	67.2	67.5	66.7	57.9	57.0	58.5
Ages 75+	61.6	62.4	61.1	62.7	63.6	62.1	49.1	47.9	49.7
Ages <65	66.0	65.8	66.3	67.3	66.8	68.0	57.2	57.0	57.4
Ages 65+	63.9	64.8	63.1	64.8	65.7	64.0	53.8	53.4	54.0
Stage:									
All Stages	64.6	65.0	64.1	65.6	66.0	65.1	55.5	55.5	55.6
Localized	91.8	92.2	91.4	92.4	92.9	91.9	87.2	86.5	87.8
Regional	70.5	70.7	70.2	71.0	71.4	70.7	64.8	65.5	64.3
Distant	11.1	10.4	11.7	11.5	10.8	12.2	7.7	6.4	8.8
Unstaged	33.2	36.3	30.3	32.6	35.4	29.7	28.3	32.9	25.1

^a Rates are based on End Results data from a series of hospital registries and one population-based registry.
^b Rates are from the SEER 9 areas (San Francisco, Connecticut, Detroit, Hawaii, Iowa, New Mexico, Seattle, Utah, Atlanta).
Rates are based on follow-up of patients into 2006.
^c Rates are from the SEER 17 areas (San Francisco, Connecticut, Detroit, Hawaii, Iowa, New Mexico, Seattle, Utah, Atlanta, San Jose-Monterey, Los Angeles, Alaska Native Registry, Rural Georgia, California excluding SF/SJM/LA, Kentucky, Louisiana and New Jersey). California excluding SF/SJM/LA, Kentucky, Louisiana, and New Jersey contribute cases for diagnosis years 2000-2005. The remaining 13 SEER Areas contribute cases for the entire period 1999-2005. Rates are based on follow-up of patients into 2006.
^d Period survival provides a more up-to-date estimate of survival by piecing together the most recent conditional survival estimates from several cohorts. It is computed here using three year calendar blocks (2003-2005: 0-1 year survival), (2002-2004: 1-2 year survival), (2001-2003: 2-3 year survival), (2000-2002: 3-4 year survival), (1999-2001: 4-5 years survival).
^e The difference in rates between 1975-1977 and 1999-2005 is statistically significant (p<.05).
^f The standard error of the survival rate is between 5 and 10 percentage points.
^g The standard error of the survival rate is greater than 10 percentage points.
- Statistic could not be calculated due to fewer than 25 cases during the time period.

Table 6.13
Cancer of the Rectum (Invasive)

Survival Rates, by Race, Sex, Diagnosis Year, Stage and Age

	All Races			Whites			Blacks		
	Total	Males	Females	Total	Males	Females	Total	Males	Females
5-Year Relative Survival Rates									
Year of Diagnosis:									
1960-1963 ^a	-	-	-	38	36	41	27	28	27
1970-1973 ^a	-	-	-	45	43	48	30	20	40
1975-1977 ^b	49.2	48.1	50.6	49.4	48.4	50.5	45.0	41.9	47.5
1978-1980 ^b	50.4	49.8	51.1	51.3	50.7	51.9	35.6	35.1	35.9
1981-1983 ^b	53.0	51.5	54.7	53.7	52.3	55.3	40.6	38.3	42.9
1984-1986 ^b	57.3	56.4	58.4	58.0	57.3	58.9	46.4	43.9	48.8
1987-1989 ^b	59.1	58.9	59.5	59.6	59.8	59.5	53.7	49.5	57.8
1990-1992 ^b	60.5	59.7	61.6	61.2	60.4	62.4	52.2	54.1	49.8
1993-1995 ^b	61.2	59.9	62.9	61.7	60.4	63.3	54.8	52.1	57.9
1996-1998 ^b	64.5	63.2	66.1	64.7	63.5	66.3	56.5	54.7	58.2
1999-2005 ^b	68.5 ^e	68.3 ^e	68.7 ^e	69.4 ^e	69.5 ^e	69.3 ^e	61.0 ^e	60.2 ^e	61.6 ^e
5-Year Period Survival Rates^{cd}									
Year of Diagnosis:									
1999-2005	67.6	67.0	68.5	68.2	67.9	68.7	59.3	56.8	61.9
Stage Distribution (%) 1999-2005^c									
All Stages									
Number of cases	54,708	30,893	23,815	44,626	25,370	19,256	4,635	2,365	2,270
Percent	100%	100%	100%	100%	100%	100%	100%	100%	100%
Localized	44	44	45	44	44	45	42	40	44
Regional	33	34	32	34	34	33	30	30	29
Distant	17	17	16	16	17	16	20	22	18
Unstaged	6	5	7	6	5	6	8	7	9
5-Year Relative Survival Rates, 1999-2005^c									
Age at Diagnosis:									
Ages <45	69.0	65.9	72.9	70.3	68.3	72.9	59.4	51.5	69.3
Ages 45-54	72.6	70.7	75.3	73.4	71.5	76.2	62.7	59.9	65.5
Ages 55-64	70.2	69.2	71.8	71.0	70.1	72.7	62.4	59.3	65.8
Ages 65-74	67.2	66.0	69.0	67.6	66.3	69.3	58.6	56.7	60.2
Ages 75+	56.2	56.0	56.4	57.2	57.3	57.2	39.3	35.2	40.9
Ages <65	70.9	69.3	73.3	71.8	70.3	74.0	62.0	58.4	66.3
Ages 65+	62.2	62.0	62.4	62.8	62.8	62.8	50.7	49.4	51.8
Stage:									
All Stages	66.6	65.9	67.5	67.2	66.7	67.8	57.9	55.5	60.4
Localized	88.9	88.5	89.5	89.3	89.1	89.6	84.0	81.9	85.9
Regional	67.0	67.1	66.8	67.8	67.8	67.8	56.4	56.8	55.5
Distant	11.9	10.6	13.9	12.1	10.9	13.8	9.2	8.5	9.7
Unstaged	46.9	47.1	46.6	45.3	45.9	44.2	48.6	43.4 ^f	52.1

^a Rates are based on End Results data from a series of hospital registries and one population-based registry.

^b Rates are from the SEER 9 areas (San Francisco, Connecticut, Detroit, Hawaii, Iowa, New Mexico, Seattle, Utah, Atlanta).

Rates are based on follow-up of patients into 2006.

^c Rates are from the SEER 17 areas (San Francisco, Connecticut, Detroit, Hawaii, Iowa, New Mexico, Seattle, Utah, Atlanta, San Jose-Monterey, Los Angeles, Alaska Native Registry, Rural Georgia, California excluding SF/SJM/LA, Kentucky, Louisiana and New Jersey). California excluding SF/SJM/LA, Kentucky, Louisiana, and New Jersey contribute cases for diagnosis years 2000-2005.

The remaining 13 SEER Areas contribute cases for the entire period 1999-2005. Rates are based on follow-up of patients into 2006.

^d Period survival provides a more up-to-date estimate of survival by piecing together the most recent conditional survival estimates from several cohorts. It is computed here using three year calendar blocks (2003-2005: 0-1 year survival),

(2002-2004: 1-2 year survival), (2001-2003: 2-3 year survival), (2000-2002: 3-4 year survival), (1999-2001: 4-5 years survival).

^e The difference in rates between 1975-1977 and 1999-2005 is statistically significant ($p < .05$).

^f The standard error of the survival rate is between 5 and 10 percentage points.

^g The standard error of the survival rate is greater than 10 percentage points.

- Statistic could not be calculated due to fewer than 25 cases during the time period.

Table 6.14
Cancer of the Colon and Rectum (Invasive)

Survival Rates^a
By Year of Diagnosis

All Races, Males and Females

Year of Diagnosis

	1975- 1979	1980- 1984	1985- 1989	1990	1991	1992	1993	1994	1995	1996	1997	1998	1999	2000	2001	2002	2003	2004	2005
Relative Survival Rates (SEER ^b)																			
1-year	74.8	78.1	80.8	81.9	82.6	81.8	80.9	81.7	80.2	81.9	81.0	82.6	82.9	82.6	83.7	83.9	83.2	84.3	84.4
2-year	63.8	67.9	71.8	73.5	74.0	73.4	72.8	73.1	72.0	74.0	73.2	75.4	75.3	75.2	76.5	77.7	76.8	77.8	
3-year	57.6	61.6	66.5	68.5	68.5	68.0	67.8	68.1	66.4	69.2	68.1	70.3	70.9	71.1	72.0	73.1	72.1		
4-year	53.9	57.6	62.7	64.4	65.1	64.4	63.8	64.1	62.7	65.7	65.2	67.4	67.9	67.9	69.4	70.2			
5-year	51.5	55.0	60.3	62.2	62.8	62.2	61.1	61.2	60.5	63.5	62.5	64.5	65.8	66.1	67.4				
6-year	49.7	53.1	58.6	60.8	60.8	60.6	59.5	59.6	58.2	62.1	60.8	63.0	64.6	64.4					
7-year	48.7	51.7	57.2	59.1	59.2	59.0	57.9	58.2	56.6	61.2	59.9	61.9	63.8						
8-year	47.9	50.7	56.3	57.7	58.0	57.5	56.9	57.3	56.1	60.6	59.2	61.5							
9-year	47.4	50.0	55.4	56.9	56.8	56.7	56.0	57.0	55.9	60.0	58.6								
10-year	46.8	49.4	54.7	56.4	56.2	56.0	55.4	56.0	55.6	59.5									
11-year	46.3	48.9	54.3	55.9	56.1	55.3	54.6	55.8	55.0										
12-year	45.9	48.6	53.8	55.5	55.9	55.3	54.0	55.3											
13-year	45.6	48.4	53.1	55.1	55.6	54.8	53.7												
14-year	45.2	48.0	52.9	54.7	55.3	54.4													
15-year	44.9	47.8	52.4	54.4	55.2														
16-year	44.7	47.3	52.2	54.3															
17-year	44.5	46.9	51.8																
18-year	44.2	46.6																	
19-year	44.2	46.2																	
20-year	44.2	46.0																	

^a

Survival rates are relative rates expressed as percents.

^b

Rates are from the SEER 9 areas (San Francisco, Connecticut, Detroit, Hawaii, Iowa, New Mexico, Seattle, Utah, and Atlanta).

Table 6.15
Cancer of the Colon and Rectum (Invasive)

Survival Rates^a
By Year of Diagnosis

All Races, Males

Year of Diagnosis

	1975- 1979	1980- 1984	1985- 1989	1990	1991	1992	1993	1994	1995	1996	1997	1998	1999	2000	2001	2002	2003	2004	2005
Relative Survival Rates (SEER ^b)																			
1-year	74.8	79.0	81.7	83.1	83.3	82.9	81.6	82.8	81.7	83.1	81.8	82.6	83.9	84.3	85.6	83.8	83.9	85.3	85.2
2-year	63.8	68.3	73.1	74.4	75.1	74.3	73.5	73.9	73.1	75.4	74.2	75.2	75.8	77.0	78.1	77.4	77.2	79.1	
3-year	57.1	61.7	67.4	69.7	69.4	68.7	68.4	69.0	67.2	70.1	68.7	69.4	71.2	72.8	73.5	73.0	72.4		
4-year	53.0	57.4	63.2	65.2	65.5	64.6	63.7	64.0	63.3	65.7	65.8	66.1	68.2	69.8	70.8	70.0			
5-year	50.4	54.5	60.6	62.4	62.8	61.9	60.6	60.4	60.3	63.0	62.9	63.3	65.8	67.3	68.3				
6-year	48.3	52.4	58.8	60.8	60.0	60.2	59.0	58.6	57.6	61.6	61.0	61.5	64.8	65.2					
7-year	47.2	50.8	57.3	58.6	58.0	58.6	57.3	57.2	56.0	60.5	60.4	60.4	63.9						
8-year	46.2	49.7	56.5	57.1	56.6	56.7	56.4	55.7	55.4	60.3	59.2	59.5							
9-year	45.6	48.9	55.5	56.6	55.7	55.7	55.0	55.2	55.1	60.1	58.4								
10-year	44.9	48.2	54.8	56.1	55.0	55.1	54.1	54.1	54.8	59.4									
11-year	44.5	47.7	54.3	55.7	55.0	54.4	52.9	54.1	54.2										
12-year	43.9	47.3	53.6	55.3	55.0	54.4	52.7	53.6											
13-year	43.5	47.2	52.9	55.0	54.8	53.9	51.8												
14-year	43.0	46.6	52.7	54.6	54.0	53.3													
15-year	42.9	46.5	52.0	54.4	53.7														
16-year	42.5	46.3	52.0	54.4															
17-year	42.3	45.6	51.6																
18-year	42.1	45.3																	
19-year	42.0	45.0																	
20-year	42.0	44.7																	

^a
^b

Survival rates are relative rates expressed as percents.
Rates are from the SEER 9 areas (San Francisco, Connecticut, Detroit, Hawaii, Iowa, New Mexico, Seattle, Utah, and Atlanta).

Table 6.16
Cancer of the Colon and Rectum (Invasive)

Survival Rates^a
By Year of Diagnosis

All Races, Females

Year of Diagnosis

	1975- 1979	1980- 1984	1985- 1989	1990	1991	1992	1993	1994	1995	1996	1997	1998	1999	2000	2001	2002	2003	2004	2005
Relative Survival Rates (SEER ^b)																			
1-year	74.8	77.3	79.8	80.7	81.8	80.7	80.2	80.7	78.8	80.7	80.2	82.6	81.8	81.0	81.7	84.0	82.4	83.3	83.6
2-year	63.8	67.5	70.6	72.6	72.9	72.5	72.2	72.3	70.9	72.6	72.1	75.5	74.8	73.4	74.9	78.1	76.4	76.4	
3-year	58.2	61.4	65.5	67.2	67.6	67.3	67.3	67.3	65.6	68.3	67.4	71.1	70.5	69.4	70.5	73.3	71.7		
4-year	54.7	57.9	62.2	63.5	64.7	64.3	63.9	64.2	62.0	65.7	64.5	68.6	67.6	66.0	67.9	70.4			
5-year	52.5	55.5	59.9	61.9	62.8	62.6	61.6	61.9	60.8	63.9	62.0	65.7	65.8	64.8	66.4				
6-year	51.0	53.8	58.4	60.8	61.5	61.1	60.0	60.6	58.8	62.7	60.5	64.4	64.4	63.6					
7-year	50.1	52.5	57.1	59.6	60.5	59.4	58.4	59.2	57.2	61.9	59.4	63.3	63.6						
8-year	49.3	51.7	56.0	58.3	59.4	58.3	57.4	58.8	56.8	60.7	59.2	63.2							
9-year	48.9	51.1	55.4	57.3	58.0	57.7	57.0	58.8	56.6	59.9	58.7								
10-year	48.4	50.5	54.7	56.7	57.5	56.8	56.9	57.9	56.5	59.5									
11-year	47.8	50.1	54.2	56.1	56.9	56.2	56.4	57.4	55.9										
12-year	47.6	49.7	54.1	55.8	56.8	56.0	55.3	57.1											
13-year	47.4	49.5	53.4	55.3	56.3	55.5	55.2												
14-year	47.0	49.2	53.1	54.8	56.3	55.5													
15-year	46.7	48.9	52.7	54.4	56.3														
16-year	46.4	48.2	52.5	54.1															
17-year	46.3	48.0	52.0																
18-year	45.8	47.7																	
19-year	45.8	47.3																	
20-year	45.8	47.2																	

^a
^b

Survival rates are relative rates expressed as percents.
Rates are from the SEER 9 areas (San Francisco, Connecticut, Detroit, Hawaii, Iowa, New Mexico, Seattle, Utah, and Atlanta).

Table 6.18
Cancer of the Colon and Rectum (Invasive)

SEER Incidence and U.S. Mortality
Age-Adjusted Rates and Trends^a
By Race/Ethnicity and Sex

SEER Incidence	SEER 17 Areas ^b			SEER 13 Areas ^b			SEER 9 Areas ^b		
	Rate 2002-2006			Trend 1997-2006 ^c			Trend 1997-2006 ^d		
	Rate per 100,000 persons			AAPC (%)			AAPC (%)		
	Total	Males	Females	Total	Males	Females	Total	Males	Females
RACE/ETHNICITY									
All Races	49.1	57.3	42.8	-2.2*	-2.6*	-1.9*	-2.3*	-2.9*	-1.9*
White	48.6	56.9	42.1	-2.3*	-2.8*	-2.1*	-2.4*	-2.7*	-2.1*
White Hispanic ^e	39.1	47.3	32.7	-1.2*	-2.0*	-0.5*	-	-	-
White Non-Hispanic ^e	49.9	58.1	43.3	-2.3*	-2.8*	-2.1*	-	-	-
Black	59.9	69.3	53.5	-1.4*	-2.2*	-1.1*	-1.5*	-2.2*	-0.4*
Asian/Pacific Islander	40.0	46.9	34.6	-1.9*	-2.3*	-0.8*	-	-	-
Amer Ind/Alaska Nat ^f	42.3	43.1	41.2	-0.1	-0.9	0.8	-	-	-
Hispanic ^e	38.4	46.3	32.2	-1.1*	-1.7*	-0.4*	-	-	-
U.S. Mortality ^g									
	Rate 2002-2006			Trend 1997-2006 ^h					
	Rate per 100,000 persons			AAPC (%)					
	Total	Males	Females	Total	Males	Females			
RACE/ETHNICITY									
All Races									
White									
White Hispanic ^e									
White Non-Hispanic ^e									
Black									
Asian/Pacific Islander									
Amer Ind/Alaska Nat									
Total U.S.									
CHSDA Counties									
Non-CHSDA Counties									
Hispanic ^e									

The AAPC is the Average Annual Percent Change over the time interval. The AAPCs are calculated by the Joinpoint Regression Program Version 3.3, April 2008, National Cancer Institute.

Statistic not shown. Rate based on less than 16 cases for the time interval.

Trend based on less than 10 cases for at least one year within the time interval.

Rates are age-adjusted to the 2000 US Std Population (19 age groups - Census P25-1130). Trends are based on rates age-adjusted to the 2000 US Std Population (19 age groups - Census P25-1130).

The SEER 9 areas are San Francisco, Connecticut, Detroit, Hawaii, Iowa, New Mexico, Seattle, Utah and Atlanta.

The SEER 13 areas comprise the SEER 9 areas plus San Jose-Monterey, Los Angeles, the Alaska Native Registry and Rural Georgia.

The SEER 17 areas comprise the SEER 13 areas plus California excluding SF/SJM/LA, Kentucky, Louisiana and New Jersey.

The 1997-2006 AAPC estimates are based on a Joinpoint analysis with up to 2 Joinpoints over diagnosis years 1992-2006.

The 1997-2006 AAPC estimates are based on a Joinpoint analysis with up to 4 Joinpoints over diagnosis years 1975-2006.

Hispanic and Non-Hispanic are not mutually exclusive from whites, blacks, Asian/Pacific Islanders, and American Indians/Alaska Natives. Incidence data for Hispanics and Non-Hispanics are based on NHIA and exclude cases from the Alaska Native Registry. The 2002-2006 Hispanic and Non-Hispanic death rates exclude deaths from Minnesota, New Hampshire and North Dakota. The 1997-2006 Hispanic and Non-Hispanic mortality trends exclude deaths from Connecticut, Maine, Maryland, Minnesota, New Hampshire, New York, North Dakota, Oklahoma and Vermont.

Incidence data for American Indian/Alaska Native are based on the CHSDA (Contract Health Service Delivery Area) counties.

US Mortality Files, National Center for Health Statistics, CDC.

The 1997-2006 mortality AAPCs are based on a Joinpoint analysis using years of death 1992-2006.

The APC is significantly different from zero (p<.05).

Table 6.19
Cancer of the Colon (Invasive) and Cancer of the Rectum (Invasive)

SEER Incidence
Age-Adjusted Rates and Trends^a
By Race/Ethnicity and Sex

Cancer of the Colon <u>SEER Incidence</u>	SEER 17 Areas ^b Rate 2002-2006 Rate per 100,000 persons			SEER 13 Areas ^b Trend 1997-2006 ^c AAPC (%)			SEER 9 Areas ^b Trend 1997-2006 ^d AAPC (%)		
	Total	Males	Females	Total	Males	Females	Total	Males	Females
	RACE/ETHNICITY								
All Races	35.5	40.0	32.0	-2.1*	-2.6*	-1.8*	-2.3*	-2.8*	-1.9*
White	35.1	39.7	31.5	-2.3*	-2.8*	-1.9*	-2.4*	-2.8*	-2.0*
White Hispanic ^e	27.2	31.6	23.8	-0.8*	-0.5	-0.3	-	-	-
White Non-Hispanic ^e	36.1	40.8	32.4	-2.3*	-2.8*	-1.9*	-	-	-
Black	46.0	52.3	41.8	-1.5*	-2.1*	-1.2*	-1.0*	-1.1*	-0.2*
Asian/Pacific Islander	27.0	30.1	24.6	-2.1*	-2.7*	-0.9*	-	-	-
Amer Ind/Alaska Nat ^f	31.1	29.7	32.0	-0.1	-1.6	1.3	-	-	-
Hispanic ^e	26.6	30.8	23.4	-0.8	-1.4*	-0.2	-	-	-
Cancer of the Rectum <u>SEER Incidence</u>	SEER 17 Areas ^b Rate 2002-2006 Rate per 100,000 persons			SEER 13 Areas ^b Trend 1997-2006 ^c AAPC (%)			SEER 9 Areas ^b Trend 1997-2006 ^d AAPC (%)		
	Total	Males	Females	Total	Males	Females	Total	Males	Females
	RACE/ETHNICITY								
All Races	13.6	17.2	10.7	-2.2*	-2.4*	-2.1*	-2.2*	-2.5*	-2.0*
White	13.5	17.1	10.6	-2.5*	-2.6*	-2.5*	-2.5*	-2.6*	-2.4*
White Hispanic ^e	11.9	15.8	8.9	-1.2*	-1.5*	-1.2*	-	-	-
White Non-Hispanic ^e	13.8	17.4	10.8	-2.5*	-2.6*	-2.5*	-	-	-
Black	13.9	17.0	11.7	-0.6	-1.0*	-0.1	-0.2	-2.3	-0.3
Asian/Pacific Islander	13.0	16.8	10.0	-1.1*	-1.1	-0.9	-	-	-
Amer Ind/Alaska Nat ^f	11.2	13.4	9.2	-0.4	-	-	-	-	-
Hispanic ^e	11.7	15.4	8.8	-1.1*	-1.4*	-1.0*	-	-	-

The AAPC is the Average Annual Percent Change over the time interval. The AAPCs are calculated by the Joinpoint Regression Program Version 3.3, April 2008, National Cancer Institute.

- Statistic not shown. Rate based on less than 16 cases for the time interval.

Trend based on less than 10 cases for at least one year within the time interval.

a Rates are age-adjusted to the 2000 US Std Population (19 age groups - Census P25-1130). Trends are based on rates age-adjusted to the 2000 US Std Population (19 age groups - Census P25-1130).

b The SEER 9 areas are San Francisco, Connecticut, Detroit, Hawaii, Iowa, New Mexico, Seattle, Utah and Atlanta.

The SEER 13 areas comprise the SEER 9 areas plus San Jose-Monterey, Los Angeles, the Alaska Native Registry and Rural Georgia.

The SEER 17 areas comprise the SEER 13 areas plus California excluding SF/SJM/LA, Kentucky, Louisiana and New Jersey.

c The 1997-2006 AAPC estimates are based on a Joinpoint analysis with up to 2 Joinpoints over diagnosis years 1992-2006.

d The 1997-2006 AAPC estimates are based on a Joinpoint analysis with up to 4 Joinpoints over diagnosis years 1975-2006.

e Hispanic and Non-Hispanic are not mutually exclusive from whites, blacks, Asian/Pacific Islanders, and American Indians/Alaska Natives. Incidence data for Hispanics and Non-Hispanics are based on NHIA and exclude cases from the Alaska Native Registry.

f Incidence data for American Indian/Alaska Native are based on the CHSDA (Contract Health Service Delivery Area) counties.

* The APC is significantly different from zero (p<.05).

Table 6.20
Cancer of the Colon and Rectum (Invasive)

Age-Adjusted SEER Incidence Rates^a
By Registry, Race and Sex

	All Races			Whites			Blacks		
	Total	Males	Females	Total	Males	Females	Total	Males	Females
<u>SEER Incidence Rates^a, 2002-2006</u>									
Atlanta & Rural Georgia	44.89	51.66	40.17	40.96	48.25	35.45	56.27	64.07	51.80
Atlanta	44.48	50.50	40.35	40.60	47.18	35.61	56.14	63.31	52.33
Rural Georgia	53.55	72.60	38.69	47.39	64.44	34.08	64.94	88.78	47.23
California	44.96	52.20	39.16	44.70	52.04	38.76	56.47	63.63	51.03
Greater Bay Area	44.27	50.62	39.19	43.96	50.16	38.97	53.86	60.92	48.69
San Francisco-Oakland	45.31	52.27	39.78	44.70	51.77	38.97	54.33	61.49	49.13
San Jose-Monterey	42.08	47.30	37.89	42.55	47.23	38.85	49.11	58.21	43.52
Los Angeles	46.04	53.54	40.21	44.33	51.59	38.57	60.34	68.95	54.32
Greater California	44.72	52.17	38.66	45.11	52.83	38.80	52.70	58.13	47.88
Connecticut	53.55	62.83	46.54	53.24	62.83	45.91	55.88	61.77	51.55
Detroit	52.94	61.98	46.48	49.90	58.40	43.58	65.75	79.22	57.12
Hawaii	50.71	61.32	41.54	50.39	59.94	41.24	38.44	53.37	-
Iowa	56.25	64.44	49.59	56.13	64.44	49.35	62.08	71.39	57.16
Kentucky	57.62	68.03	49.85	57.00	67.44	49.12	69.60	82.27	61.49
Louisiana	56.39	68.47	47.28	54.03	66.52	44.25	64.46	76.44	56.38
New Jersey	55.44	65.37	48.01	55.16	65.35	47.40	59.93	70.66	53.26
New Mexico	42.02	49.40	35.76	43.16	50.77	36.65	26.00	24.26	27.95
Seattle-Puget Sound	45.93	52.14	40.63	46.06	52.30	40.65	51.36	53.58	48.99
Utah	39.05	45.30	33.71	39.44	45.67	34.12	37.53	-	-
9 SEER Areas ^b	48.78	56.37	42.76	48.15	55.76	41.99	58.85	67.87	53.09
11 SEER Areas ^b	47.78	55.22	41.91	47.04	54.41	41.10	59.17	68.04	53.35
13 SEER Areas ^b	47.89	55.35	41.99	47.04	54.44	41.08	59.20	68.23	53.24
17 SEER Areas ^b	49.14	57.25	42.75	48.65	56.87	42.07	59.87	69.34	53.50

^a Rates are per 100,000 and are age-adjusted to the 2000 US Std Population (19 age groups - Census P25-1130)

^b The SEER 9 areas are San Francisco, Connecticut, Detroit, Hawaii, Iowa, New Mexico, Seattle, Utah and Atlanta.

The SEER 11 areas comprise the SEER 9 areas plus San Jose-Monterey and Los Angeles.

The SEER 13 areas comprise the SEER 11 areas plus the Alaska Native Registry and Rural Georgia.

The SEER 17 areas comprise the SEER 13 areas plus California excluding SF/SJM/LA, Kentucky, Louisiana and New Jersey.

- Statistic not shown. Rate based on less than 16 cases for the time interval.

Table 6.25
Cancer of the Colon and Rectum (Invasive)

Estimated United States Cancer Prevalence Counts^a on January 1, 2006
By Race/Ethnicity, Sex and Years Since Diagnosis

Years Since Diagnosis		0 to <5	5 to <10	10 to <15	15 to <20	20 to <25	25 to <30	0 to <16 ^e	0 to <31 ^e	>=31 ^g	Complete ^h
<u>Race</u>	<u>Sex</u>										
All Races ^b	Both Sexes	410,878	263,947	164,750	114,290	67,504	37,785	866,951	1,063,937	40,165	1,104,102
	Males	207,419	131,746	80,079	56,122	30,135	15,092	432,913	522,508	14,436	536,944
	Females	203,459	132,201	84,671	58,168	37,369	22,693	434,038	541,429	25,729	567,158
White ^b	Both Sexes	348,874	230,188	144,309	100,824	60,586	33,731	747,384	922,890	35,761	958,651
	Males	178,455	115,778	70,634	50,227	27,060	13,523	376,890	457,468	12,995	470,463
	Females	170,419	114,410	73,675	50,597	33,526	20,208	370,494	465,422	22,766	488,188
Black ^b	Both Sexes	42,135	22,725	13,952	9,736	4,877	2,702	81,186	96,390	2,818	99,208
	Males	18,615	9,998	6,066	3,967	1,949	942	35,792	41,606	925	42,531
	Females	23,520	12,727	7,886	5,769	2,928	1,760	45,394	54,784	1,893	56,677
Asian/ Pacific Islander ^c	Both Sexes	14,085	7,932	4,648	+	+	+	27,330	+	+	+
	Males	7,267	4,156	2,376	+	+	+	14,143	+	+	+
	Females	6,818	3,776	2,272	+	+	+	13,187	+	+	+
Hispanic ^d	Both Sexes	22,853	11,699	6,712	+	+	+	42,336	+	+	+
	Males	12,138	6,353	3,420	+	+	+	22,391	+	+	+
	Females	10,715	5,346	3,292	+	+	+	19,945	+	+	+

Estimated prevalence percent^a on January 1, 2006, of the SEER 11 population diagnosed in the previous 16 years
By Age at Prevalence, Race/Ethnicity and Sex

Age at Prevalence		Age Specific (Crude)									Age-Adjusted ^f	
		All Ages	0-9	10-19	20-29	30-39	40-49	50-59	60-69	70-79	80+	All Ages
<u>Race</u>	<u>Sex</u>											
All Races ^c	Both Sexes	0.2543%	-	0.0003%	0.0045%	0.0223%	0.0872%	0.3008%	0.7479%	1.5006%	2.1764%	0.2665%
	Males	0.2585%	-	0.0002%	0.0042%	0.0228%	0.0915%	0.3376%	0.8840%	1.8231%	2.4866%	0.3115%
	Females	0.2502%	-	0.0004%	0.0048%	0.0218%	0.0828%	0.2658%	0.6250%	1.2517%	2.0043%	0.2318%
White ^c	Both Sexes	0.2675%	-	0.0004%	0.0048%	0.0221%	0.0845%	0.2877%	0.7362%	1.5137%	2.2204%	0.2659%
	Males	0.2714%	-	0.0003%	0.0044%	0.0227%	0.0883%	0.3280%	0.8782%	1.8385%	2.5317%	0.3118%
	Females	0.2636%	-	0.0005%	0.0052%	0.0215%	0.0806%	0.2481%	0.6046%	1.2572%	2.0496%	0.2296%
Black ^c	Both Sexes	0.1990%	-	-	0.0031%	0.0228%	0.0971%	0.3738%	0.8986%	1.5369%	1.9071%	0.2811%
	Males	0.1888%	-	-	0.0036%	0.0227%	0.1013%	0.3968%	0.9702%	1.7753%	2.0846%	0.3102%
	Females	0.2083%	-	-	0.0026%	0.0229%	0.0935%	0.3546%	0.8428%	1.3782%	1.8211%	0.2619%
Asian/ Pacific Islander ^c	Both Sexes	0.2283%	-	-	0.0035%	0.0218%	0.0903%	0.3087%	0.6857%	1.3575%	1.9678%	0.2479%
	Males	0.2425%	-	-	0.0038%	0.0228%	0.0975%	0.3321%	0.8247%	1.6999%	2.3356%	0.2950%
	Females	0.2148%	-	-	0.0032%	0.0208%	0.0836%	0.2880%	0.5679%	1.1064%	1.7255%	0.2125%
Hispanic ^d	Both Sexes	0.0948%	-	0.0004%	0.0033%	0.0170%	0.0651%	0.2203%	0.5743%	1.0688%	1.4087%	0.1909%
	Males	0.0967%	-	-	0.0035%	0.0168%	0.0655%	0.2493%	0.6907%	1.4129%	1.5978%	0.2301%
	Females	0.0928%	-	-	0.0032%	0.0172%	0.0647%	0.1927%	0.4756%	0.8184%	1.2988%	0.1614%

^a US 2006 cancer prevalence counts are based on 2006 cancer prevalence proportions from the SEER registries and 1/1/2006 US population estimates based on the average of 2005 and 2006 population estimates from the US Bureau of the Census. Prevalence was calculated using the First Malignant Primary Only for a person.

^{b c d} Statistics based on (b) SEER 9 Areas (c) SEER 11 Areas and Rural Georgia (d) NHIA for Hispanic for SEER 11 Areas and Rural Georgia.

^e Maximum limited-duration prevalence: 31 years for 1975-2006 SEER 9 data; 16 years for 1990-2006 SEER 11 data (used to calculate prevalence for Hispanics and Asian Pacific Islanders).

^f Percentages are age-adjusted to the 2000 US Standard Population (19 age groups - Census P25-1130) by 5-year age groups.

^{g h i} (g) Cases diagnosed more than 31 years ago were estimated using the completeness index method (Capocaccia et. al. 1997, Merrill et. al. 2000). (h) Complete prevalence is obtained by summing 0 to <31 and >=31. (i) Age-specific completeness index was approximated using empirical data from historical Connecticut tumor registry.

- Statistic not shown. Statistic based on fewer than 5 cases estimated alive in SEER for the time interval.

+ Not available.

Table 6.26

Cancer of the Colon And Rectum (Invasive)Percent Distribution and Counts by Histology among Histologically Confirmed Cases, 2002-2006
Both Sexes by Race

Histology ^a	All Races		White		Black		Asian/Pacific Islander		American Indian/ Alaska Native ^b		Hispanic ^c	
	Count	Percent	Count	Percent	Count	Percent	Count	Percent	Count	Percent	Count	Percent
Carcinoma	172,407	99.5%	140,950	99.5%	17,317	99.5%	11,977	99.6%	761	99.0%	14,527	99.5%
Epidermoid carcinoma ^d (8051-8131)	718	0.4%	605	0.4%	88	0.5%	-	-	-	-	73	0.5%
Squamous cell carcinoma (8070-8078,8083-8084)	651	0.4%	546	0.4%	83	0.5%	-	-	-	-	64	0.4%
Adenocarcinoma (8050,8140-8147, 8160-8162,8180-8221, 8250-8507,8520-8551,8560, 8570-8574,8576,8940-8941)	164,141	94.8%	134,904	95.3%	16,130	92.7%	11,294	93.9%	700	91.0%	13,602	93.1%
Adenocarcinoma, NOS (8140)	113,323	65.4%	92,843	65.6%	11,258	64.7%	8,110	67.4%	527	68.5%	9,339	64.0%
Adenocarcinoma in adenomatous polyp (8210)	11,108	6.4%	9,033	6.4%	955	5.5%	883	7.3%	49	6.4%	845	5.8%
Adenocarcinoma in villous adenoma (8261)	5,546	3.2%	4,589	3.2%	558	3.2%	332	2.8%	-	-	548	3.8%
Mucinous adenocarcinoma (8470-8473,8480,8482)	13,213	7.6%	11,196	7.9%	1,177	6.8%	735	6.1%	51	6.6%	1,179	8.1%
Mucin-producing adenocarcinoma (8481)	4,345	2.5%	3,548	2.5%	557	3.2%	212	1.8%	-	-	338	2.3%
Signet ring adenocarcinoma (8490)	2,047	1.2%	1,739	1.2%	156	0.9%	138	1.1%	-	-	178	1.2%
Other adenocarcinomas ^e	14,559	8.4%	11,956	8.4%	1,469	8.4%	884	7.3%	43	5.6%	1,175	8.0%
Other specific carcinomas (8012-8015,8030-8046, 8150-8155,8170-8175, 8230-8249,8508,8510-8513, 8561-8562,8575,8580-8671)	5,919	3.4%	4,108	2.9%	927	5.3%	575	4.8%	50	6.5%	693	4.7%
Neuroendocrine carcinoid (8240-8245)	4,986	2.9%	3,324	2.3%	843	4.8%	523	4.3%	45	5.9%	613	4.2%
Other ^f	933	0.5%	784	0.6%	84	0.5%	52	0.4%	-	-	80	0.5%
Unspecified, Carcinoma, NOS (8010-8011, 8020-8022)	1,629	0.9%	1,333	0.9%	172	1.0%	98	0.8%	-	-	159	1.1%

Source: SEER 17 areas (San Francisco, Connecticut, Detroit, Hawaii, Iowa, New Mexico, Seattle, Utah, Atlanta, San Jose-Monterey, Los Angeles, Alaska Native Registry, Rural Georgia, California excluding SF/SJM/LA, Kentucky, Louisiana and New Jersey). Percents may not sum to 100 due to rounding.

^a Excludes Kaposi Sarcoma, mesothelioma, lymphomas, leukemias, myelomas, lymphoreticular, and immunoproliferative diseases.

^b Estimates for American Indian/Alaska Native are based on the CHSDA(Contract Health Service Delivery Area) counties.

^c Hispanic is not mutually exclusive from whites, blacks, Asian/Pacific Islanders, and American Indians/Alaska Natives.

^d Underlying incidence data for Hispanics are based on NHIA and exclude cases from the Alaska Native Registry.

^e Epidermoid carcinoma includes squamous, basal, and transitional cell carcinomas.

^f Includes histologies 8050, 8141-8147, 8160-8162, 8180-8204, 8211-8221, 8250-8260, 8262-8264, 8270-8463, 8500-8507, 8514, 8520-8551, 8560, 8570-8574, 8576, 8940-8941.

^f Includes histologies 8012-8015, 8030-8046, 8150-8155, 8170-8175, 8230-8231, 8246-8249, 8508, 8510-8513, 8561-8562, 8575, 8580-8671.

- Statistic not shown due to fewer than 16 cases during the time period.

Table 6.26 - continued

Cancer of the Colon And Rectum (Invasive)Percent Distribution and Counts by Histology among Histologically Confirmed Cases, 2002-2006
Both Sexes by Race

Histology ^a	<u>All Races</u>		<u>White</u>		<u>Black</u>		<u>Asian/Pacific Islander</u>		<u>American Indian/ Alaska Native^b</u>		<u>Hispanic^c</u>	
	Count	Percent	Count	Percent	Count	Percent	Count	Percent	Count	Percent	Count	Percent
Sarcoma and other soft tissue tumors (8680-8713,8800-8921, 8990-8991,9040-9044, 9120-9136,9150-9252, 9370-9373,9540-9582)	94	0.1%	73	0.1%	-	-	-	-	-	-	-	-
Other specific types (8720-8790,8930-8936, 8950-8983,9000-9030, 9060-9110,9260-9365, 9380-9539)	216	0.1%	168	0.1%	23	0.1%	23	0.2%	-	-	18	0.1%
Unspecified (8000-8005)	513	0.3%	427	0.3%	50	0.3%	22	0.2%	-	-	48	0.3%
Total ^d	173,230	100.0%	141,618	100.0%	17,401	100.0%	12,029	100.0%	769	100.0%	14,603	100.0%

Source: SEER 17 areas (San Francisco, Connecticut, Detroit, Hawaii, Iowa, New Mexico, Seattle, Utah, Atlanta, San Jose-Monterey, Los Angeles, Alaska Native Registry, Rural Georgia, California excluding SF/SJM/LA, Kentucky, Louisiana and New Jersey). Percents may not sum to 100 due to rounding.

^a Excludes Kaposi Sarcoma, mesothelioma, lymphomas, leukemias, myelomas, lymphoreticular, and immunoproliferative diseases.

^b Estimates for American Indian/Alaska Native are based on the CHSDA(Contract Health Service Delivery Area) counties.

^c Hispanic is not mutually exclusive from whites, blacks, Asian/Pacific Islanders, and American Indians/Alaska Natives.

Underlying incidence data for Hispanics are based on NHIA and exclude cases from the Alaska Native Registry.

^d Total includes carcinoma cases from the previous page.

- Statistic not shown due to fewer than 16 cases during the time period.

SEER Observed Incidence, SEER Delay Adjusted Incidence and US Death Rates^a Cancer of the Colon and Rectum, by Race and Sex

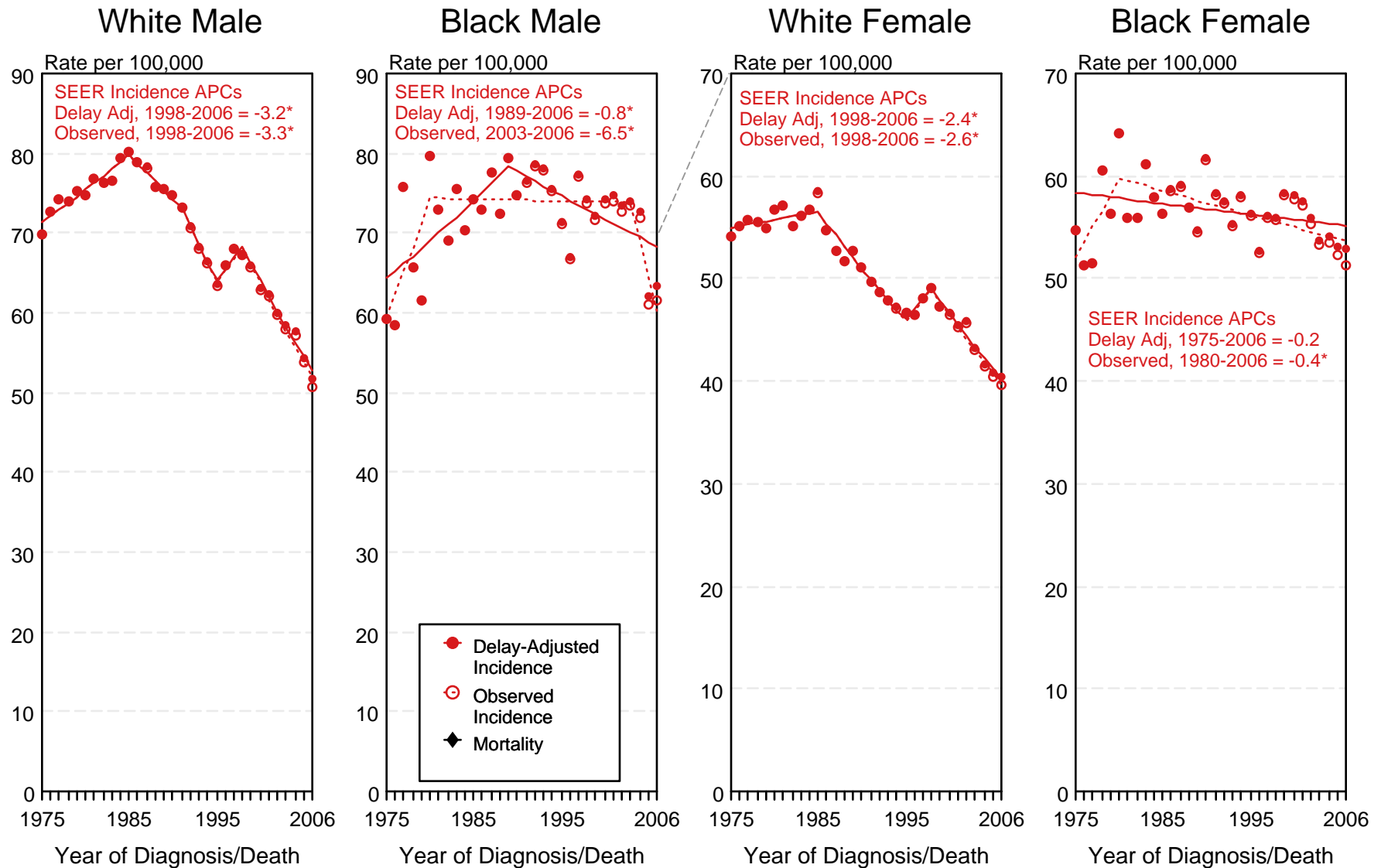


Figure 6.1

^a Source: SEER 9 areas and US Mortality Files (National Center for Health Statistics, CDC). Rates are age-adjusted to the 2000 US Std Population (19 age groups - Census P25-1103). Regression lines and APCs are calculated using the Joinpoint Regression Program Version 3.3.1, April 2008, National Cancer Institute. The APC is the Annual Percent Change for the regression line segments. The APC shown on the graph is for the most recent trend.
* The APC is significantly different from zero ($p < 0.05$).

SEER Incidence and US Death Rates^a Cancer of the Colon and Rectum, Both Sexes

Joinpoint Analyses for Whites and Blacks from 1975-2006 and for Asian/Pacific Islanders, American Indians/Alaska Natives and Hispanics from 1992-2006

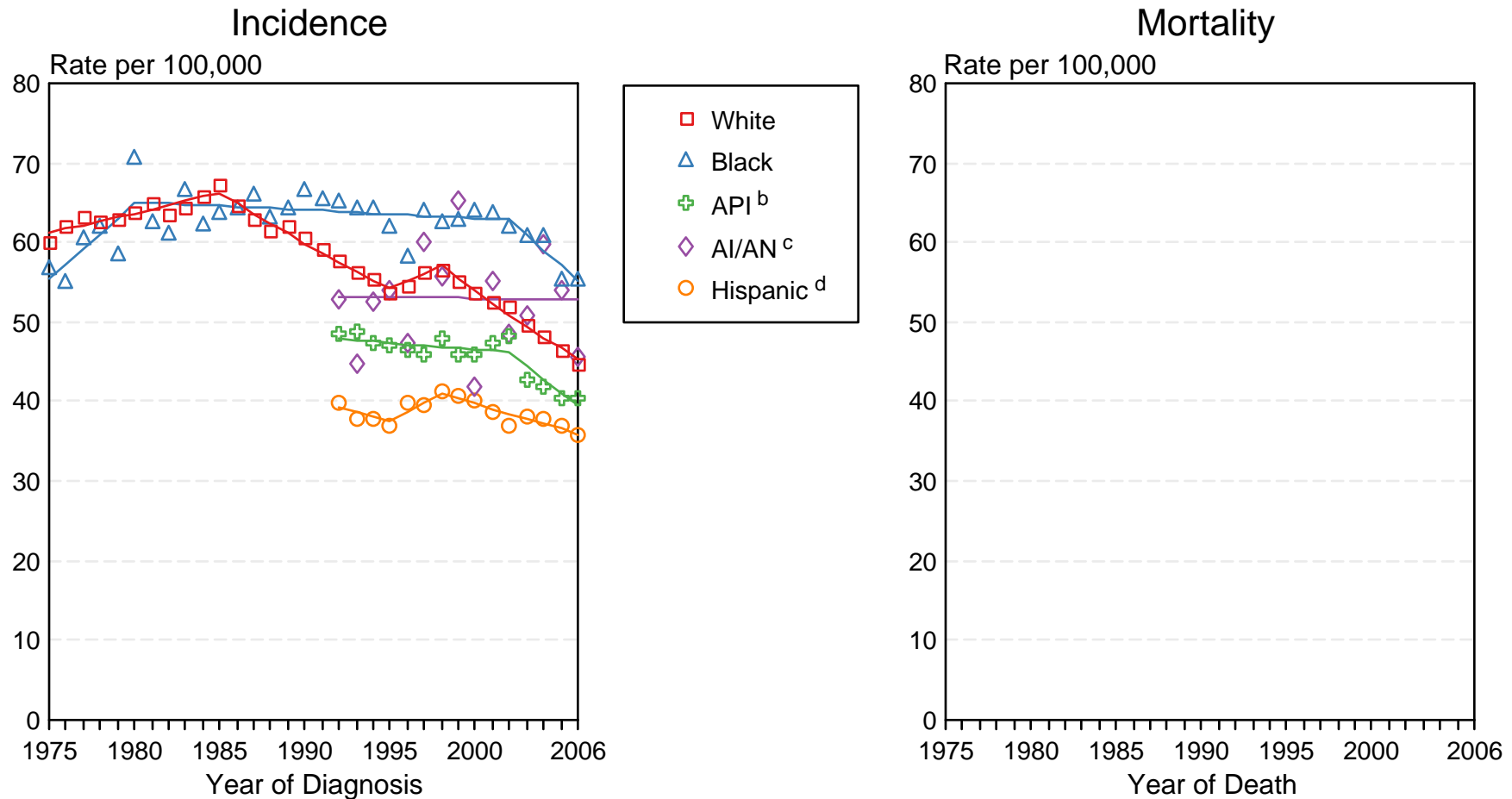


Figure 6.2

Source: Incidence data for whites and blacks are from the SEER 9 areas (San Francisco, Connecticut, Detroit, Hawaii, Iowa, New Mexico, Seattle, Utah, Atlanta).

Incidence data for Asian/Pacific Islanders, American Indians/Alaska Natives and Hispanics are from the SEER 13 Areas (SEER 9 Areas, San Jose-Monterey, Los Angeles, Alaska Native Registry and Rural Georgia). Mortality data are from US Mortality Files, National Center for Health Statistics, CDC.

^a Rates are age-adjusted to the 2000 US Std Population (19 age groups - Census P25-1103).

Regression lines are calculated using the Joinpoint Regression Program Version 3.3.1, April 2008, National Cancer Institute. Joinpoint analyses for Whites and Blacks during the 1975-2006 period allow a maximum of 4 joinpoints. Analyses for other ethnic groups during the period 1992-2006 allow a maximum of 2 joinpoints.

^b API = Asian/Pacific Islander.

^c AI/AN = American Indian/Alaska Native. Rates for American Indian/Alaska Native are based on the CHSDA(Contract Health Service Delivery Area) counties.

^d Hispanic is not mutually exclusive from whites, blacks, Asian/Pacific Islanders, and American Indians/Alaska Natives. Incidence data for Hispanics are based on NHIA and exclude cases from the Alaska Native Registry. Mortality data for Hispanics exclude cases from Connecticut, Maine, Maryland, Minnesota, New Hampshire, New York, North Dakota, Oklahoma, and Vermont.