

Table 26.1
Cancer of the Thyroid (Invasive)

Trends in SEER Incidence^{ab} and U.S. Mortality^c Using the Joinpoint Regression Program,
1975-2006 With up to Four Joinpoints, 1992-2006 With up to Two Joinpoints,
Both Sexes by Race/Ethnicity

	Joinpoint Trend 1		Joinpoint Trend 2		Joinpoint Trend 3		Joinpoint Trend 4		Joinpoint Trend 5		AAPC ^d	
	Years	APC	Years	APC	Years	APC	Years	APC	Years	APC	1997-2006	2002-2006
<u>SEER 9 Delay-Adjusted Incidence^a, 1975-2006</u>												
All Races	1975-1977	6.2	1977-1980	-6.7	1980-1997	2.4*	1997-2006	6.5*			6.5*	6.5*
White	1975-1977	7.2	1977-1980	-6.6	1980-1997	2.7*	1997-2006	7.0*			7.0*	7.0*
Black	1975-1988	-1.0	1988-2006	4.6*							4.6*	4.6*
<u>SEER 13 Delay-Adjusted Incidence^b, 1992-2006</u>												
All Races	1992-1998	3.1*	1998-2006	6.3*							6.0*	6.3*
White	1992-1998	3.6*	1998-2006	6.6*							6.3*	6.6*
Black	1992-1995	-4.0	1995-2006	6.7*							6.7*	6.7*
<u>SEER 9 Observed Incidence^a, 1975-2006</u>												
All Races	1975-1977	6.2	1977-1980	-6.7	1980-1997	2.4*	1997-2006	6.2*			6.2*	6.2*
White	1975-1977	7.2	1977-1980	-6.6	1980-1997	2.7*	1997-2006	6.7*			6.7*	6.7*
Black	1975-1988	-1.0	1988-2006	4.4*							4.4*	4.4*
<u>SEER 13 Observed Incidence^b, 1992-2006</u>												
All Races	1992-1998	3.1*	1998-2006	6.1*							5.8*	6.1*
White	1992-1998	3.6*	1998-2006	6.4*							6.1*	6.4*
White NH ^{ef}	1992-1998	4.3*	1998-2006	6.7*							6.4*	6.7*
Black	1992-1995	-4.0	1995-2006	6.4*							6.4*	6.4*
Black NH ^{ef}	1992-1995	-4.2	1995-2006	6.4*							6.4*	6.4*
API ^e	1992-1996	-2.2	1996-2006	3.5*							3.5*	3.5*
AI/AN ^{eg}	1992-2006	2.5									2.5	2.5
Hispanic ^e	1992-1995	-5.1	1995-2006	4.9*							4.9*	4.9*
<u>U.S. Cancer Mortality^c, 1975-2006</u>												
All Races												
White												
Black												
<u>U.S. Cancer Mortality^c, 1992-2006</u>												
All Races												
White												
White NH ^{ef}												
Black												
Black NH ^{ef}												
API ^e												
AI/AN ^{eg}												
Hispanic ^e												

Joinpoint Regression Program Version 3.3.1, April 2008, National Cancer Institute. (<http://srab.cancer.gov/joinpoint/>).

The APC is the Annual Percent Change based on rates age-adjusted to the 2000 US Std Population (19 age groups - Census P25-1130).

^a Trends are from the SEER 9 areas (San Francisco, Connecticut, Detroit, Hawaii, Iowa, New Mexico, Seattle, Utah, and Atlanta).

^b Trends are from the SEER 13 areas (SEER 9 Areas, Los Angeles, San Jose-Monterey, Rural Georgia, and the Alaska Native Registry).

^c Trends are from US Mortality Files, National Center for Health Statistics, Centers for Disease Control and Prevention.

^d The AAPC is the Average Annual Percent Change and is based on the APCs calculated by Joinpoint.

^e API - Asian/Pacific Islander, AI/AN - American Indian/Alaska Native, NH - Non-Hispanic

^f Hispanic and Non-Hispanic are not mutually exclusive from whites, blacks, Asian/Pacific Islanders, and American Indians/Alaska

Natives. Incidence data for Hispanics and Non-Hispanics are based on NHIA and exclude cases from the Alaska Native Registry.

The Hispanic and Non-Hispanic mortality trends exclude deaths from CT, ME, MD, MN, NH, NY, ND, OK and VT.

^g Data for American Indian/Alaska Native are based on the CHSDA (Contract Health Service Delivery Area) counties.

* The APC/AAPC is significantly different from zero ($p < .05$).

- Joinpoint regression line analysis could not be performed on data series.

Table 26.2
Cancer of the Thyroid (Invasive)

Trends in SEER Incidence^{ab} and U.S. Mortality^c Using the Joinpoint Regression Program,
1975-2006 With up to Four Joinpoints, 1992-2006 With up to Two Joinpoints,
Males by Race/Ethnicity

	Joinpoint Trend 1		Joinpoint Trend 2		Joinpoint Trend 3		Joinpoint Trend 4		Joinpoint Trend 5		AAPC ^d	
	Years	APC	Years	APC	Years	APC	Years	APC	Years	APC	1997-2006	2002-2006
<u>SEER 9 Delay-Adjusted Incidence^a, 1975-2006</u>												
All Races	1975-1980	-4.7*	1980-1998	1.9*	1998-2006	6.1*					5.7*	6.1*
White	1975-1977	9.7	1977-1980	-9.2	1980-1999	2.7*	1999-2006	6.9*			6.0*	6.9*
Black	1975-2006	2.4*									2.4*	2.4*
<u>SEER 13 Delay-Adjusted Incidence^b, 1992-2006</u>												
All Races	1992-1996	-1.1	1996-2006	5.4*							5.4*	5.4*
White	1992-1998	1.6	1998-2006	6.2*							5.7*	6.2*
Black	1992-1995	-13.3	1995-2006	6.3*							6.3*	6.3*
<u>SEER 9 Observed Incidence^a, 1975-2006</u>												
All Races	1975-1980	-4.7*	1980-1998	1.9*	1998-2006	5.8*					5.4*	5.8*
White	1975-1977	9.7	1977-1980	-9.2	1980-1999	2.6*	1999-2006	6.6*			5.7*	6.6*
Black	1975-2006	2.3*									2.3*	2.3*
<u>SEER 13 Observed Incidence^b, 1992-2006</u>												
All Races	1992-1995	-3.1	1995-2006	5.0*							5.0*	5.0*
White	1992-1995	-2.1	1995-2006	5.3*							5.3*	5.3*
White NH ^{ef}	1992-1998	2.0	1998-2006	6.5*							6.0*	6.5*
Black	1992-1995	-13.3	1995-2006	6.0*							6.0*	6.0*
Black NH ^{ef}	1992-1995	-13.2	1995-2006	6.0*							6.0*	6.0*
API ^e	1992-2006	1.0									1.0	1.0
AI/AN ^{eg}	1992-2006	3.0									3.0	3.0
Hispanic ^e	1992-2006	3.2*									3.2*	3.2*
<u>U.S. Cancer Mortality^c, 1975-2006</u>												
All Races												
White												
Black												
<u>U.S. Cancer Mortality^c, 1992-2006</u>												
All Races												
White												
White NH ^{ef}												
Black												
Black NH ^{ef}												
API ^e												
AI/AN ^{eg}												
Hispanic ^e												

Joinpoint Regression Program Version 3.3.1, April 2008, National Cancer Institute. (<http://srab.cancer.gov/joinpoint/>).

The APC is the Annual Percent Change based on rates age-adjusted to the 2000 US Std Population (19 age groups - Census P25-1130).

^a Trends are from the SEER 9 areas (San Francisco, Connecticut, Detroit, Hawaii, Iowa, New Mexico, Seattle, Utah, and Atlanta).

^b Trends are from the SEER 13 areas (SEER 9 Areas, Los Angeles, San Jose-Monterey, Rural Georgia, and the Alaska Native Registry).

^c Trends are from US Mortality Files, National Center for Health Statistics, Centers for Disease Control and Prevention.

^d The AAPC is the Average Annual Percent Change and is based on the APCs calculated by Joinpoint.

^e API - Asian/Pacific Islander, AI/AN - American Indian/Alaska Native, NH - Non-Hispanic

^f Hispanic and Non-Hispanic are not mutually exclusive from whites, blacks, Asian/Pacific Islanders, and American Indians/Alaska

Natives. Incidence data for Hispanics and Non-Hispanics are based on NHIA and exclude cases from the Alaska Native Registry.

The Hispanic and Non-Hispanic mortality trends exclude deaths from CT, ME, MD, MN, NH, NY, ND, OK and VT.

^g Data for American Indian/Alaska Native are based on the CHSDA (Contract Health Service Delivery Area) counties.

* The APC/AAPC is significantly different from zero ($p < .05$).

- Joinpoint regression line analysis could not be performed on data series.

Table 26.3
Cancer of the Thyroid (Invasive)

Trends in SEER Incidence^{ab} and U.S. Mortality^c Using the Joinpoint Regression Program,
1975-2006 With up to Four Joinpoints, 1992-2006 With up to Two Joinpoints,
Females by Race/Ethnicity

	Joinpoint Trend 1		Joinpoint Trend 2		Joinpoint Trend 3		Joinpoint Trend 4		Joinpoint Trend 5		AAPC ^d	
	Years	APC	Years	APC	Years	APC	Years	APC	Years	APC	1997-2006	2002-2006
<u>SEER 9 Delay-Adjusted Incidence^a, 1975-2006</u>												
All Races	1975-1977	6.5	1977-1980	-5.3	1980-1995	2.3*	1995-2006	6.3*			6.3*	6.3*
White	1975-1977	6.4	1977-1980	-4.8	1980-1993	2.4*	1993-1999	5.1*	1999-2006	7.5*	6.9*	7.5*
Black	1975-1988	-1.3	1988-2006	4.9*							4.9*	4.9*
<u>SEER 13 Delay-Adjusted Incidence^b, 1992-2006</u>												
All Races	1992-1998	3.9*	1998-2006	6.5*							6.2*	6.5*
White	1992-1998	4.4*	1998-2006	6.9*							6.6*	6.9*
Black	1992-1998	3.1*	1998-2006	7.4*							6.9*	7.4*
<u>SEER 9 Observed Incidence^a, 1975-2006</u>												
All Races	1975-1977	6.5	1977-1980	-5.3	1980-1995	2.3*	1995-2006	6.0*			6.0*	6.0*
White	1975-1982	-0.7	1982-1995	2.6*	1995-2006	6.6*					6.6*	6.6*
Black	1975-1988	-1.3	1988-2006	4.7*							4.7*	4.7*
<u>SEER 13 Observed Incidence^b, 1992-2006</u>												
All Races	1992-1998	3.8*	1998-2006	6.3*							6.0*	6.3*
White	1992-1998	4.4*	1998-2006	6.6*							6.4*	6.6*
White NH ^{ef}	1992-2000	5.4*	2000-2003	8.7*	2003-2006	4.9*					6.3*	5.8*
Black	1992-2006	5.7*									5.7*	5.7*
Black NH ^{ef}	1992-2001	4.2*	2001-2006	8.4*							6.5*	8.4*
API ^e	1992-2006	2.9*									2.9*	2.9*
AI/AN ^{eg}	1992-2006	2.7									2.7	2.7
Hispanic ^e	1992-1997	-0.4	1997-2006	5.6*							5.6*	5.6*
<u>U.S. Cancer Mortality^c, 1975-2006</u>												
All Races												
White												
Black												
<u>U.S. Cancer Mortality^c, 1992-2006</u>												
All Races												
White												
White NH ^{ef}												
Black												
Black NH ^{ef}												
API ^e												
AI/AN ^{eg}												
Hispanic ^e												

Joinpoint Regression Program Version 3.3.1, April 2008, National Cancer Institute. (<http://srab.cancer.gov/joinpoint/>).

The APC is the Annual Percent Change based on rates age-adjusted to the 2000 US Std Population (19 age groups - Census P25-1130).

^a Trends are from the SEER 9 areas (San Francisco, Connecticut, Detroit, Hawaii, Iowa, New Mexico, Seattle, Utah, and Atlanta).

^b Trends are from the SEER 13 areas (SEER 9 Areas, Los Angeles, San Jose-Monterey, Rural Georgia, and the Alaska Native Registry).

^c Trends are from US Mortality Files, National Center for Health Statistics, Centers for Disease Control and Prevention.

^d The AAPC is the Average Annual Percent Change and is based on the APCs calculated by Joinpoint.

^e API - Asian/Pacific Islander, AI/AN - American Indian/Alaska Native, NH - Non-Hispanic

^f Hispanic and Non-Hispanic are not mutually exclusive from whites, blacks, Asian/Pacific Islanders, and American Indians/Alaska

Natives. Incidence data for Hispanics and Non-Hispanics are based on NHIA and exclude cases from the Alaska Native Registry.

The Hispanic and Non-Hispanic mortality trends exclude deaths from CT, ME, MD, MN, NH, NY, ND, OK and VT.

^g Data for American Indian/Alaska Native are based on the CHSDA (Contract Health Service Delivery Area) counties.

* The APC/AAPC is significantly different from zero ($p < .05$).

- Joinpoint regression line analysis could not be performed on data series.

Table 26.4
Cancer of the Thyroid (Invasive)

Age-adjusted SEER Incidence^a Rates by Year, Race and Sex

Year of Diagnosis:	All Races			Whites			Blacks		
	Total	Males	Females	Total	Males	Females	Total	Males	Females
1975	4.85	3.14	6.45	4.66	2.80	6.37	2.97	-	4.21
1976	4.80	2.95	6.57	4.67	2.88	6.39	3.41	-	5.03
1977	5.44	3.49	7.32	5.35	3.43	7.22	3.74	-	5.40
1978	5.09	3.14	6.94	4.95	2.97	6.83	2.92	-	4.00
1979	4.48	2.67	6.17	4.43	2.57	6.19	3.24	-	4.30
1980	4.33	2.39	6.14	4.31	2.28	6.22	2.37	-	3.43
1981	4.41	2.51	6.23	4.38	2.47	6.27	2.38	-	3.41
1982	4.63	3.00	6.15	4.55	2.87	6.13	3.29	-	4.34
1983	4.70	2.80	6.48	4.73	2.61	6.71	3.02	2.15	3.77
1984	4.84	2.65	6.91	4.72	2.57	6.79	3.02	-	4.08
1985	5.12	3.08	7.09	5.09	3.10	7.05	2.85	-	3.64
1986	5.32	3.07	7.48	5.22	3.10	7.32	3.35	-	5.09
1987	5.04	2.80	7.13	5.04	2.87	7.07	2.82	-	4.30
1988	4.94	2.94	6.90	4.90	3.00	6.81	2.53	-	3.21
1989	5.35	2.97	7.64	5.47	3.21	7.71	2.51	-	4.01
1990	5.49	2.91	7.96	5.55	2.96	8.10	3.76	2.28	4.91
1991	5.46	3.18	7.65	5.66	3.30	7.97	3.19	-	4.20
1992	5.86	3.52	8.09	5.88	3.53	8.17	4.20	3.09	5.13
1993	5.64	3.58	7.64	5.75	3.68	7.79	3.38	2.07	4.56
1994	6.07	3.38	8.72	6.21	3.43	8.98	3.75	1.78	5.35
1995	6.20	3.37	8.95	6.38	3.59	9.16	3.06	-	4.50
1996	6.49	3.47	9.45	6.70	3.61	9.80	3.83	-	5.75
1997	6.76	3.65	9.76	7.02	3.76	10.28	3.98	2.44	5.24
1998	6.94	3.71	10.04	7.16	3.95	10.33	3.85	1.50	5.79
1999	7.32	3.86	10.63	7.54	4.08	10.97	4.57	1.54	7.03
2000	7.58	4.01	11.06	8.01	4.34	11.72	4.60	2.18	6.60
2001	8.21	4.30	12.03	8.57	4.55	12.63	4.82	2.67	6.57
2002	9.13	4.86	13.30	9.62	5.18	14.12	5.42	2.77	7.56
2003	9.51	4.69	14.21	10.16	5.02	15.33	5.21	2.74	7.37
2004	9.95	5.13	14.68	10.59	5.44	15.82	6.16	3.24	8.61
2005	10.68	5.63	15.61	11.58	6.24	16.96	5.75	2.76	8.35
2006	11.03	5.66	16.29	11.79	6.18	17.49	6.22	2.62	9.10
1975-2006	6.56	3.63	9.37	6.68	3.73	9.58	3.97	2.01	5.60

^a SEER 9 areas (San Francisco, Connecticut, Detroit, Hawaii, Iowa, New Mexico, Seattle, Utah, and Atlanta). Rates are per 100,000 and are age-adjusted to the 2000 US Std Population (19 age groups - Census P25-1130).
- Statistic not shown. Rate based on less than 16 cases for the time interval.

Table 26.6
Cancer of the Thyroid (Invasive)SEER Incidence^a and U.S. Death^b Rates, Age-Adjusted and Age-Specific Rates, by Race and Sex

	All Races			Whites			Blacks		
	Total	Males	Females	Total	Males	Females	Total	Males	Females
<u>SEER Incidence</u>									
<u>Age at Diagnosis</u>									
Age-Adjusted Rates, 2002-2006									
All ages	9.6	4.9	14.2	10.1	5.2	15.0	5.8	2.7	8.4
Under 65	8.7	3.9	13.6	9.2	4.2	14.5	4.9	2.0	7.4
65 and over	15.8	12.3	18.6	16.1	12.7	18.8	12.1	8.1	15.0
All ages (IARC world std) ^c	7.8	3.8	11.8	8.2	4.1	12.5	4.6	2.0	6.7
Age-Specific Rates, 2002-2006									
<1	-	-	-	-	-	-	-	-	-
1-4	-	-	-	-	-	-	-	-	-
5-9	0.1	-	0.2	0.1	-	0.2	-	-	-
10-14	0.5	0.2	0.7	0.5	0.2	0.8	-	-	-
15-19	1.8	0.6	3.0	2.0	0.6	3.4	0.4	-	-
20-24	4.5	1.3	7.9	4.8	1.3	8.6	2.1	-	3.5
25-29	7.9	2.4	13.7	8.4	2.5	14.8	3.9	1.2	6.3
30-34	10.5	3.5	17.7	11.4	3.8	19.6	4.7	1.4	7.7
35-39	13.2	5.1	21.5	14.1	5.7	23.0	7.0	2.2	11.4
40-44	14.2	5.8	22.5	15.2	6.4	24.2	7.2	2.7	11.2
45-49	15.9	6.7	25.0	16.9	7.4	26.5	7.8	2.5	12.4
50-54	16.5	8.1	24.6	17.1	8.6	25.5	11.0	5.7	15.4
55-59	17.0	10.1	23.6	17.4	10.5	24.0	12.7	6.0	18.2
60-64	17.3	11.7	22.3	18.0	12.7	22.9	12.0	6.0	16.7
65-69	19.0	14.1	23.3	19.5	14.8	23.7	13.6	8.8	17.2
70-74	17.5	13.4	20.9	17.8	14.0	20.9	12.8	6.0	17.6
75-79	15.8	12.0	18.5	16.0	12.4	18.6	11.8	8.9	13.6
80-84	13.0	11.1	14.2	13.2	11.4	14.3	10.7	-	12.5
85+	8.7	7.5	9.3	8.6	6.9	9.4	9.8	-	9.6
<u>U.S. Mortality</u>									
<u>Age at Death</u>									
Age-Adjusted Rates, 2002-2006									
All ages									
Under 65									
65 and over									
All ages (IARC world std) ^c									
Age-Specific Rates, 2002-2006									
<1									
1-4									
5-9									
10-14									
15-19									
20-24									
25-29									
30-34									
35-39									
40-44									
45-49									
50-54									
55-59									
60-64									
65-69									
70-74									
75-79									
80-84									
85+									

^a SEER 17 areas. Rates are per 100,000 and are age-adjusted to the 2000 US Std Population (19 age groups - Census P25-1130), unless noted.

^b US Mortality Files, National Center for Health Statistics, Centers for Disease Control and Prevention.

^c Rates are per 100,000 and are age-adjusted to the 2000 US Std Population (19 age groups - Census P25-1130), unless noted.

- Rates are per 100,000 and are age-adjusted to the IARC world standard population.

- Statistic not shown. Rate based on less than 16 cases for the time interval.

Table 26.7
Cancer of the Thyroid (Invasive)

Survival Rates, by Race, Sex, Diagnosis Year, Stage and Age

	All Races			Whites			Blacks		
	Total	Males	Females	Total	Males	Females	Total	Males	Females
5-Year Relative Survival Rates									
Year of Diagnosis:									
1960-1963 ^a	-	-	-	83	75	87	-	-	-
1970-1973 ^a	-	-	-	86	82	87	-	-	-
1975-1977 ^b	93.2	92.6	93.4	93.0	92.3	93.2	90.7	-	91.7
1978-1980 ^b	93.2	88.5	94.6	92.7	88.9	93.8	90.5	68.8 ^g	95.7
1981-1983 ^b	94.4	93.0	94.7	93.8	91.9	94.5	96.7	100.0	93.7
1984-1986 ^b	93.9	90.9	94.8	93.9	90.6	94.8	90.0	86.1 ^f	90.8
1987-1989 ^b	95.1	92.4	95.9	94.9	92.4	95.5	92.5	90.7 ^f	92.7
1990-1992 ^b	95.1	91.3	96.2	95.7	92.5	96.6	87.4	84.8 ^f	88.3
1993-1995 ^b	96.0	92.5	97.0	96.0	92.3	97.2	93.4	88.3 ^f	94.5
1996-1998 ^b	96.1	91.7	97.4	96.5	92.2	97.8	95.3	86.0 ^f	96.7
1999-2005 ^b	97.3 ^e	94.9 ^e	98.0 ^e	97.5 ^e	95.3 ^e	98.2 ^e	95.5	94.1	95.5
5-Year Period Survival Rates^{cd}									
Year of Diagnosis:									
1999-2005	97.7	94.8	98.4	97.8	94.8	98.5	96.9	93.5	97.2
Stage Distribution (%) 1999-2005^c									
All Stages									
Number of cases	37,453	8,609	28,844	30,963	7,355	23,608	2,227	416	1,811
Percent	100%	100%	100%	100%	100%	100%	100%	100%	100%
Localized	68	58	70	68	59	71	76	67	77
Regional	24	30	23	24	30	23	14	16	14
Distant	6	9	5	5	9	4	8	13	7
Unstaged	3	3	2	3	3	2	2	3	2
5-Year Relative Survival Rates, 1999-2005^c									
Age at Diagnosis:									
Ages <45	99.3	98.0	99.5	99.3	98.3	99.6	98.1	91.5	99.0
Ages 45-54	98.6	95.6	99.4	98.7	95.6	99.5	94.9	86.6	96.9
Ages 55-64	96.2	93.7	97.1	96.5	93.7	97.4	92.5	90.1	91.6
Ages 65-74	92.3	90.3	93.2	92.9	90.5	94.1	88.1	91.9 ^f	85.7 ^f
Ages 75+	81.0	75.7	82.2	82.5	75.9	83.4	67.2 ^f	-	64.1 ^g
Ages <65	98.6	96.4	99.2	98.7	96.6	99.3	96.5	91.0	97.5
Ages 65+	88.7	86.4	89.4	89.4	86.2	90.0	83.0	90.9 ^f	79.6
Stage:									
All Stages	97.3	94.7	98.0	97.5	94.8	98.2	95.0	91.4	95.5
Localized	99.8	99.6	99.8	99.8	99.6	99.8	99.3	98.2	99.3
Regional	97.0	95.4	97.7	97.2	95.2	98.0	92.4	86.3 ^f	93.8
Distant	59.0	52.8	62.2	57.9	50.5	62.1	52.7	59.7 ^f	49.2 ^f
Unstaged	89.4	81.1	92.0	89.3	81.0	92.1	76.3 ^f	-	76.1 ^g

^a Rates are based on End Results data from a series of hospital registries and one population-based registry.

^b Rates are from the SEER 9 areas (San Francisco, Connecticut, Detroit, Hawaii, Iowa, New Mexico, Seattle, Utah, Atlanta).

Rates are based on follow-up of patients into 2006.

^c Rates are from the SEER 17 areas (San Francisco, Connecticut, Detroit, Hawaii, Iowa, New Mexico, Seattle, Utah, Atlanta, San Jose-Monterey, Los Angeles, Alaska Native Registry, Rural Georgia, California excluding SF/SJM/LA, Kentucky, Louisiana and New Jersey). California excluding SF/SJM/LA, Kentucky, Louisiana, and New Jersey contribute cases for diagnosis years 2000-2005.

The remaining 13 SEER Areas contribute cases for the entire period 1999-2005. Rates are based on follow-up of patients into 2006.

^d Period survival provides a more up-to-date estimate of survival by piecing together the most recent conditional survival estimates from several cohorts. It is computed here using three year calendar blocks (2003-2005: 0-1 year survival),

(2002-2004: 1-2 year survival), (2001-2003: 2-3 year survival), (2000-2002: 3-4 year survival), (1999-2001: 4-5 years survival).

^e The difference in rates between 1975-1977 and 1999-2005 is statistically significant ($p < .05$).

^f The standard error of the survival rate is between 5 and 10 percentage points.

^g The standard error of the survival rate is greater than 10 percentage points.

- Statistic could not be calculated due to fewer than 25 cases during the time period.

Table 26.8
Cancer of the Thyroid (Invasive)

Survival Rates^a
By Year of Diagnosis

All Races, Males and Females

	Year of Diagnosis																			
	1975- 1979	1980- 1984	1985- 1989	1990	1991	1992	1993	1994	1995	1996	1997	1998	1999	2000	2001	2002	2003	2004	2005	
Relative Survival Rates (SEER ^b)																				
1-year	95.1	95.3	96.1	96.7	96.7	95.7	95.4	97.5	96.8	97.0	96.6	97.8	97.5	97.7	97.7	97.2	98.1	98.4	97.8	
2-year	93.9	94.9	95.5	96.4	96.1	95.1	95.1	97.1	96.3	96.7	96.3	97.3	97.3	97.2	97.5	97.2	97.9	98.1		
3-year	93.3	94.3	95.2	95.9	96.0	94.7	95.1	96.6	96.2	96.3	96.3	97.2	97.3	97.2	97.1	97.2	97.8			
4-year	93.2	94.2	94.9	95.9	95.6	94.5	95.1	96.3	96.2	95.8	96.1	96.7	97.3	97.2	97.1	97.2				
5-year	93.1	94.2	94.9	95.9	95.1	93.9	95.1	96.1	96.2	95.5	95.9	96.7	97.3	96.8	96.5					
6-year	93.1	94.2	94.9	95.9	94.8	93.8	95.1	95.8	96.2	95.5	95.7	96.5	97.0	96.8						
7-year	93.1	93.9	94.8	95.7	94.5	93.8	95.1	95.8	96.2	95.3	95.7	96.5	97.0							
8-year	93.1	93.9	94.7	95.7	94.5	93.8	95.1	95.3	96.2	95.3	95.7	96.5								
9-year	93.0	93.9	94.7	95.7	94.5	93.8	95.1	95.2	96.2	95.1	95.7									
10-year	93.0	93.8	94.7	95.3	94.5	93.8	95.1	95.2	96.2	95.1										
11-year	93.0	93.7	94.7	95.0	94.4	93.8	94.9	95.2	96.2											
12-year	93.0	93.6	94.7	95.0	94.2	93.8	94.9	95.2												
13-year	93.0	93.5	94.7	94.8	94.2	93.8	94.9													
14-year	93.0	93.5	94.7	94.5	94.1	93.8														
15-year	93.0	93.5	94.7	94.5	93.6															
16-year	93.0	93.4	94.7	94.5																
17-year	93.0	93.4	94.7																	
18-year	93.0	93.4																		
19-year	93.0	93.4																		
20-year	93.0	93.4																		

^a Survival rates are relative rates expressed as percents.
^b Rates are from the SEER 9 areas (San Francisco, Connecticut, Detroit, Hawaii, Iowa, New Mexico, Seattle, Utah, and Atlanta).

Table 26.9
Cancer of the Thyroid (Invasive)

Survival Rates^a
By Year of Diagnosis

All Races, Males

Year of Diagnosis

	1975- 1979	1980- 1984	1985- 1989	1990	1991	1992	1993	1994	1995	1996	1997	1998	1999	2000	2001	2002	2003	2004	2005
Relative Survival Rates (SEER ^b)																			
1-year	94.7	92.8	95.1	93.9	95.4	94.0	93.4	96.9	93.7	93.9	92.4	97.3	97.1	96.5	96.2	95.3	96.4	96.8	97.0
2-year	92.9	92.5	94.0	92.8	92.7	93.3	92.9	95.8	91.9	93.8	91.1	95.6	96.4	95.3	95.3	95.1	95.7	95.5	
3-year	92.2	91.5	94.0	92.0	91.6	92.4	92.7	95.2	91.9	92.7	91.1	95.1	96.4	95.3	94.0	95.1	94.8		
4-year	91.5	91.4	92.9	92.0	91.4	92.1	91.1	94.8	91.8	92.3	90.0	94.3	96.4	95.3	93.5	95.1			
5-year	91.2	91.4	92.5	92.0	90.0	91.6	91.1	94.1	91.8	90.5	89.3	94.3	96.4	94.6	92.3				
6-year	91.2	91.3	92.4	91.6	89.1	91.6	91.1	93.9	91.4	90.5	89.0	94.3	96.4	94.6					
7-year	91.2	91.0	91.6	91.6	88.3	91.6	91.0	93.5	89.9	90.5	89.0	94.3	96.2						
8-year	91.2	91.0	91.3	91.6	88.0	91.6	90.8	92.7	89.9	90.4	89.0	94.3							
9-year	91.2	90.8	90.6	91.6	88.0	91.6	90.6	92.5	89.9	88.7	89.0								
10-year	91.2	90.3	90.5	91.6	88.0	91.6	89.5	92.5	89.3	88.7									
11-year	90.9	90.0	90.5	91.6	88.0	91.6	89.5	92.5	88.4										
12-year	90.9	89.5	90.5	91.5	88.0	91.4	89.5	92.5											
13-year	90.9	89.2	90.5	89.6	88.0	91.4	89.5												
14-year	90.9	89.2	90.5	89.6	88.0	91.4													
15-year	90.9	89.1	90.5	88.0	87.9														
16-year	90.9	89.1	90.5	88.0															
17-year	90.9	89.1	90.5																
18-year	90.9	88.9																	
19-year	90.9	88.9																	
20-year	90.9	88.9																	

^a
^b

Survival rates are relative rates expressed as percents.
Rates are from the SEER 9 areas (San Francisco, Connecticut, Detroit, Hawaii, Iowa, New Mexico, Seattle, Utah, and Atlanta).

Table 26.10
Cancer of the Thyroid (Invasive)

Survival Rates^a
By Year of Diagnosis

All Races, Females

Year of Diagnosis

	1975- 1979	1980- 1984	1985- 1989	1990	1991	1992	1993	1994	1995	1996	1997	1998	1999	2000	2001	2002	2003	2004	2005
Relative Survival Rates (SEER ^b)																			
1-year	95.2	96.2	96.5	97.5	97.1	96.4	95.9	97.7	97.8	97.9	97.8	97.9	97.6	98.1	98.1	97.8	98.6	98.9	98.1
2-year	94.2	95.6	96.0	97.4	97.0	95.7	95.9	97.3	97.5	97.6	97.8	97.7	97.5	97.8	98.1	97.8	98.5	98.7	
3-year	93.7	95.2	95.6	97.1	97.0	95.5	95.9	96.9	97.5	97.3	97.8	97.7	97.5	97.7	98.0	97.8	98.5		
4-year	93.7	95.1	95.5	97.1	96.8	95.4	95.9	96.7	97.5	96.8	97.8	97.5	97.5	97.7	98.0	97.8			
5-year	93.7	95.0	95.5	97.1	96.5	94.6	95.9	96.7	97.5	96.8	97.8	97.3	97.4	97.4	97.6				
6-year	93.7	95.0	95.5	97.1	96.5	94.6	95.9	96.3	97.5	96.8	97.7	97.0	97.2	97.4					
7-year	93.6	94.8	95.5	96.6	96.4	94.6	95.9	96.3	97.5	96.5	97.7	97.0	97.2						
8-year	93.5	94.8	95.5	96.6	96.4	94.6	95.9	96.1	97.5	96.5	97.7	97.0							
9-year	93.4	94.8	95.5	96.6	96.4	94.6	95.9	95.9	97.5	96.5	97.7								
10-year	93.4	94.8	95.5	96.1	96.4	94.6	95.9	95.7	97.5	96.5									
11-year	93.4	94.8	95.5	95.6	96.2	94.6	95.9	95.7	97.5										
12-year	93.4	94.8	95.5	95.6	95.8	94.6	95.9	95.7											
13-year	93.4	94.8	95.5	95.6	95.7	94.6	95.9												
14-year	93.4	94.8	95.5	95.6	95.6	94.6													
15-year	93.4	94.8	95.5	95.6	95.1														
16-year	93.4	94.7	95.5	95.6															
17-year	93.4	94.7	95.5																
18-year	93.4	94.7																	
19-year	93.4	94.7																	
20-year	93.4	94.7																	

^a

Survival rates are relative rates expressed as percents.

^b

Rates are from the SEER 9 areas (San Francisco, Connecticut, Detroit, Hawaii, Iowa, New Mexico, Seattle, Utah, and Atlanta).

Table 26.12
Cancer of the Thyroid (Invasive)

SEER Incidence and U.S. Mortality
Age-Adjusted Rates and Trends^a
By Race/Ethnicity and Sex

SEER Incidence	SEER 17 Areas ^b			SEER 13 Areas ^b			SEER 9 Areas ^b		
	Rate 2002-2006			Trend 1997-2006 ^c			Trend 1997-2006 ^d		
	Rate per 100,000 persons			AAPC (%)			AAPC (%)		
RACE/ETHNICITY	Total	Males	Females	Total	Males	Females	Total	Males	Females
All Races	9.6	4.9	14.2	5.8*	5.0*	6.0*	6.2*	5.4*	6.0*
White	10.1	5.2	15.0	6.1*	5.3*	6.4*	6.7*	5.7*	6.6*
White Hispanic ^e	8.4	3.7	13.3	4.7*	3.0*	5.2*	-	-	-
White Non-Hispanic ^e	10.7	5.7	15.7	6.4*	6.0*	6.3*	-	-	-
Black	5.8	2.7	8.4	6.4*	6.0*	5.7*	4.4*	2.3*	4.7*
Asian/Pacific Islander	9.4	4.2	14.2	3.5*	1.0	2.9*	-	-	-
Amer Ind/Alaska Nat ^f	5.8	3.0	8.5	2.5	-	-	-	-	-
Hispanic ^e	8.2	3.5	12.9	4.9*	3.2*	5.6*	-	-	-
<u>U.S. Mortality^g</u>									
	Rate 2002-2006			Trend 1997-2006 ^h					
	Rate per 100,000 persons			AAPC (%)					
RACE/ETHNICITY	Total	Males	Females	Total	Males	Females			
All Races									
White									
White Hispanic ^e									
White Non-Hispanic ^e									
Black									
Asian/Pacific Islander									
Amer Ind/Alaska Nat									
Total U.S.									
CHSDA Counties									
Non-CHSDA Counties									
Hispanic ^e									

The AAPC is the Average Annual Percent Change over the time interval. The AAPCs are calculated by the Joinpoint Regression Program Version 3.3, April 2008, National Cancer Institute.

Statistic not shown. Rate based on less than 16 cases for the time interval.

Trend based on less than 10 cases for at least one year within the time interval.

Rates are age-adjusted to the 2000 US Std Population (19 age groups - Census P25-1130). Trends are based on rates age-adjusted to the 2000 US Std Population (19 age groups - Census P25-1130).

The SEER 9 areas are San Francisco, Connecticut, Detroit, Hawaii, Iowa, New Mexico, Seattle, Utah and Atlanta.

The SEER 13 areas comprise the SEER 9 areas plus San Jose-Monterey, Los Angeles, the Alaska Native Registry and Rural Georgia.

The SEER 17 areas comprise the SEER 13 areas plus California excluding SF/SJM/LA, Kentucky, Louisiana and New Jersey.

The 1997-2006 AAPC estimates are based on a Joinpoint analysis with up to 2 Joinpoints over diagnosis years 1992-2006.

The 1997-2006 AAPC estimates are based on a Joinpoint analysis with up to 4 Joinpoints over diagnosis years 1975-2006.

Hispanic and Non-Hispanic are not mutually exclusive from whites, blacks, Asian/Pacific Islanders, and American Indians/Alaska Natives. Incidence data for Hispanics and Non-Hispanics are based on NHIA and exclude cases from the Alaska Native Registry. The 2002-2006 Hispanic and Non-Hispanic death rates exclude deaths from Minnesota, New Hampshire and North Dakota. The 1997-2006 Hispanic and Non-Hispanic mortality trends exclude deaths from Connecticut, Maine, Maryland, Minnesota, New Hampshire, New York, North Dakota, Oklahoma and Vermont.

Incidence data for American Indian/Alaska Native are based on the CHSDA (Contract Health Service Delivery Area) counties.

US Mortality Files, National Center for Health Statistics, CDC.

The 1997-2006 mortality AAPCs are based on a Joinpoint analysis using years of death 1992-2006.

The APC is significantly different from zero (p<.05).

Table 26.13
Cancer of the Thyroid (Invasive)

Age-Adjusted SEER Incidence Rates^a
By Registry, Race and Sex

	All Races			Whites			Blacks		
	Total	Males	Females	Total	Males	Females	Total	Males	Females
<u>SEER Incidence Rates^a, 2002-2006</u>									
Atlanta & Rural Georgia	8.77	4.33	12.97	10.73	5.41	16.32	5.30	2.37	7.68
Atlanta	8.83	4.41	13.04	10.87	5.57	16.46	5.18	2.15	7.58
Rural Georgia	6.95	-	10.88	7.21	-	11.92	6.97	-	-
California	8.40	4.25	12.53	8.58	4.43	12.81	5.09	2.53	7.39
Greater Bay Area	7.64	3.69	11.64	7.70	3.82	11.84	3.89	2.08	5.46
San Francisco-Oakland	7.12	3.43	10.79	7.12	3.55	10.89	3.68	-	5.39
San Jose-Monterey	8.62	4.20	13.27	8.69	4.31	13.46	5.13	-	-
Los Angeles	9.04	4.42	13.44	9.31	4.68	13.92	5.78	2.72	8.26
Greater California	8.38	4.37	12.42	8.55	4.52	12.66	4.95	2.63	7.34
Connecticut	12.87	6.33	19.03	13.63	6.68	20.26	6.28	3.38	8.55
Detroit	9.35	5.26	13.21	10.35	5.72	14.96	6.70	3.88	8.97
Hawaii	10.95	5.27	16.73	8.28	4.96	12.26	-	-	-
Iowa	9.88	5.59	14.23	9.84	5.53	14.21	7.62	-	-
Kentucky	9.19	4.68	13.58	9.26	4.77	13.65	7.92	2.97	12.29
Louisiana	7.94	4.17	11.47	9.35	5.07	13.58	4.71	1.73	7.12
New Jersey	12.77	6.39	18.83	13.65	6.83	20.27	6.96	3.35	9.93
New Mexico	12.34	6.06	18.38	13.12	6.51	19.52	-	-	-
Seattle-Puget Sound	10.16	5.23	15.10	10.40	5.50	15.37	6.43	-	10.91
Utah	12.76	6.96	18.61	12.97	7.05	18.93	-	-	-
9 SEER Areas ^b	10.08	5.21	14.85	10.77	5.62	15.97	5.77	2.84	8.23
11 SEER Areas ^b	9.72	4.96	14.39	10.28	5.32	15.30	5.77	2.84	8.23
13 SEER Areas ^b	9.71	4.95	14.38	10.27	5.31	15.29	5.79	2.86	8.24
17 SEER Areas ^b	9.63	4.92	14.23	10.11	5.24	15.02	5.79	2.74	8.39

^a Rates are per 100,000 and are age-adjusted to the 2000 US Std Population (19 age groups - Census P25-1130)

^b The SEER 9 areas are San Francisco, Connecticut, Detroit, Hawaii, Iowa, New Mexico, Seattle, Utah and Atlanta.

The SEER 11 areas comprise the SEER 9 areas plus San Jose-Monterey and Los Angeles.

The SEER 13 areas comprise the SEER 11 areas plus the Alaska Native Registry and Rural Georgia.

The SEER 17 areas comprise the SEER 13 areas plus California excluding SF/SJM/LA, Kentucky, Louisiana and New Jersey.

- Statistic not shown. Rate based on less than 16 cases for the time interval.

Table 26.18
Cancer of the Thyroid (Invasive)

Estimated United States Cancer Prevalence Counts^a on January 1, 2006
By Race/Ethnicity, Sex and Years Since Diagnosis

Years Since Diagnosis		0 to <5	5 to <10	10 to <15	15 to <20	20 to <25	25 to <30	0 to <16 ^e	0 to <31 ^e	>=31 ^g	Complete ^h
<u>Race</u>	<u>Sex</u>										
All Races ^b	Both Sexes	120,479	79,343	57,374	42,937	33,340	28,843	266,724	367,333	43,071	410,404
	Males	26,876	17,561	13,313	8,966	7,186	6,270	59,608	81,388	10,006	91,394
	Females	93,603	61,782	44,061	33,971	26,154	22,573	207,116	285,945	33,065	319,010
White ^b	Both Sexes	105,500	69,731	50,969	38,504	30,106	25,978	234,804	325,378	38,993	364,371
	Males	24,054	15,955	12,190	8,278	6,489	5,792	53,919	73,885	8,467	82,352
	Females	81,446	53,776	38,779	30,226	23,617	20,186	180,885	251,493	30,526	282,019
Black ^b	Both Sexes	7,374	4,510	3,036	1,964	1,512	1,349	15,346	19,969	1,776	21,745
	Males	1,429	664	575	313	330	145	2,746	3,480	195	3,675
	Females	5,945	3,846	2,461	1,651	1,182	1,204	12,600	16,489	1,581	18,070
Asian/ Pacific Islander ^c	Both Sexes	5,407	3,474	2,446	+	+	+	11,738	+	+	+
	Males	996	652	396	+	+	+	2,112	+	+	+
	Females	4,411	2,822	2,050	+	+	+	9,626	+	+	+
Hispanic ^d	Both Sexes	10,871	6,673	4,626	+	+	+	22,903	+	+	+
	Males	1,891	1,135	760	+	+	+	3,924	+	+	+
	Females	8,980	5,538	3,866	+	+	+	18,979	+	+	+

Estimated prevalence percent^a on January 1, 2006, of the SEER 11 population diagnosed in the previous 16 years
By Age at Prevalence, Race/Ethnicity and Sex

Age at Prevalence	All Ages	Age Specific (Crude)								Age-Adjusted ^f		
		0-9	10-19	20-29	30-39	40-49	50-59	60-69	70-79	80+	All Ages	
<u>Race</u>	<u>Sex</u>											
All Races ^c	Both Sexes	0.0831%	-	0.0039%	0.0334%	0.0974%	0.1401%	0.1605%	0.1592%	0.1384%	0.0973%	0.0821%
	Males	0.0368%	-	0.0015%	0.0092%	0.0329%	0.0538%	0.0769%	0.0962%	0.0934%	0.0689%	0.0380%
	Females	0.1285%	-	0.0063%	0.0593%	0.1637%	0.2262%	0.2402%	0.2160%	0.1732%	0.1130%	0.1248%
White ^c	Both Sexes	0.0894%	-	0.0041%	0.0365%	0.1084%	0.1524%	0.1681%	0.1623%	0.1394%	0.0970%	0.0873%
	Males	0.0409%	-	0.0016%	0.0097%	0.0369%	0.0597%	0.0840%	0.1002%	0.0982%	0.0712%	0.0411%
	Females	0.1381%	-	0.0068%	0.0663%	0.1850%	0.2480%	0.2508%	0.2199%	0.1719%	0.1111%	0.1338%
Black ^c	Both Sexes	0.0384%	-	0.0015%	0.0119%	0.0424%	0.0637%	0.0890%	0.1121%	0.0899%	0.0592%	0.0434%
	Males	0.0147%	-	-	0.0036%	0.0127%	0.0204%	0.0337%	0.0610%	0.0600%	0.0442%	0.0189%
	Females	0.0599%	-	0.0020%	0.0199%	0.0684%	0.1017%	0.1349%	0.1518%	0.1098%	0.0664%	0.0637%
Asian/ Pacific Islander ^c	Both Sexes	0.0842%	-	0.0043%	0.0334%	0.0833%	0.1299%	0.1659%	0.1695%	0.1576%	0.1206%	0.0817%
	Males	0.0317%	-	-	0.0112%	0.0264%	0.0446%	0.0618%	0.0903%	0.0770%	0.0638%	0.0327%
	Females	0.1335%	-	0.0079%	0.0556%	0.1373%	0.2082%	0.2573%	0.2367%	0.2166%	0.1581%	0.1251%
Hispanic ^d	Both Sexes	0.0521%	-	0.0036%	0.0260%	0.0676%	0.1077%	0.1399%	0.1477%	0.1348%	0.1063%	0.0688%
	Males	0.0170%	-	0.0013%	0.0052%	0.0198%	0.0284%	0.0549%	0.0762%	0.0680%	0.0583%	0.0260%
	Females	0.0891%	-	0.0060%	0.0511%	0.1230%	0.1918%	0.2206%	0.2084%	0.1834%	0.1341%	0.1110%

^a US 2006 cancer prevalence counts are based on 2006 cancer prevalence proportions from the SEER registries and 1/1/2006 US population estimates based on the average of 2005 and 2006 population estimates from the US Bureau of the Census. Prevalence was calculated using the First Malignant Primary Only for a person.

^{b c d} Statistics based on (b) SEER 9 Areas (c) SEER 11 Areas and Rural Georgia (d) NHIA for Hispanic for SEER 11 Areas and Rural Georgia.

^e Maximum limited-duration prevalence: 31 years for 1975-2006 SEER 9 data; 16 years for 1990-2006 SEER 11 data (used to calculate prevalence for Hispanics and Asian Pacific Islanders).

^f Percentages are age-adjusted to the 2000 US Standard Population (19 age groups - Census P25-1130) by 5-year age groups.

^{g h i} (g) Cases diagnosed more than 31 years ago were estimated using the completeness index method (Capocaccia et. al. 1997, Merrill et. al. 2000). (h) Complete prevalence is obtained by summing 0 to <31 and >=31. (i) Age-specific completeness index was approximated using empirical data from historical Connecticut tumor registry.

- Statistic not shown. Statistic based on fewer than 5 cases estimated alive in SEER for the time interval.

+ Not available.

Table 26.19

Cancer of the Thyroid (Invasive)

Percent Distribution and Counts by Histology among Histologically Confirmed Cases, 2002-2006
Both Sexes by Race

Histology ^a	All Races		White		Black		Asian/Pacific Islander		American Indian/ Alaska Native ^b		Hispanic ^c	
	Count	Percent	Count	Percent	Count	Percent	Count	Percent	Count	Percent	Count	Percent
Carcinoma	36,212	99.8%	30,103	99.8%	2,117	99.7%	3,391	99.9%	151	100.0%	4,950	99.7%
Epidermoid carcinoma ^d (8051-8131)	46	0.1%	39	0.1%	-	-	-	-	-	-	-	-
Adenocarcinoma ^e	34,965	96.3%	29,054	96.3%	2,039	96.0%	3,299	97.2%	146	96.7%	4,796	96.6%
Papillary adenocarcinoma (8050,8260,8340-8344, 8350,8450)	30,964	85.3%	25,800	85.5%	1,688	79.5%	2,970	87.5%	129	85.4%	4,379	88.2%
Follicular carcinoma (8330-8332,8335)	2,381	6.6%	1,875	6.2%	237	11.2%	226	6.7%	-	-	247	5.0%
Oxyphilic (8290)	1,201	3.3%	1,031	3.4%	89	4.2%	65	1.9%	-	-	120	2.4%
Other specific carcinomas ^f	601	1.7%	526	1.7%	34	1.6%	30	0.9%	-	-	78	1.6%
Medullary carcinoma (8510,8511)	564	1.6%	495	1.6%	32	1.5%	27	0.8%	-	-	76	1.5%
Carcinoma, NOS (8004,8010-8012, 8020-8022,8030-8032)	600	1.7%	484	1.6%	43	2.0%	58	1.7%	-	-	69	1.4%
Anaplastic carcinoma (8004,8012,8020-8021, 8030-8032)	367	1.0%	297	1.0%	29	1.4%	36	1.1%	-	-	36	0.7%
Sarcoma and other soft tissue tumors (8680-8713,8800-8921, 8990-8991,9040-9044, 9120-9136,9150-9252, 9370-9373,9540-9582)	-	-	-	-	-	-	-	-	-	-	-	-
Other specific types ^g	-	-	-	-	-	-	-	-	-	-	-	-
Unspecified (8000-8003,8005)	69	0.2%	57	0.2%	-	-	-	-	-	-	-	-
Total	36,295	100.0%	30,171	100.0%	2,124	100.0%	3,394	100.0%	151	100.0%	4,965	100.0%

Source: SEER 17 areas (San Francisco, Connecticut, Detroit, Hawaii, Iowa, New Mexico, Seattle, Utah, Atlanta, San Jose-Monterey, Los Angeles, Alaska Native Registry, Rural Georgia, California excluding SF/SJM/LA, Kentucky, Louisiana and New Jersey). Percents may not sum to 100 due to rounding.

^a Excludes Kaposi Sarcoma, mesothelioma, lymphomas, leukemias, myelomas, lymphoreticular, and immunoproliferative diseases.

^b Estimates for American Indian/Alaska Native are based on the CHSDA (Contract Health Service Delivery Area) counties.

^c Hispanic is not mutually exclusive from whites, blacks, Asian/Pacific Islanders, and American Indians/Alaska Natives.

Underlying incidence data for Hispanics are based on NHIA and exclude cases from the Alaska Native Registry.

^d Epidermoid carcinoma includes squamous, basal, and transitional cell carcinomas.

^e Adenocarcinoma includes histologies 8050, 8140-8147, 8160-8162, 8180-8221, 8250-8507, 8514, 8520-8551, 8560, 8570-8574, 8576, 8940-8941.

^f Other specific carcinomas include histologies 8013-8015, 8030-8046, 8150-8155, 8170-8171, 8230-8249, 8510-8512, 8561-8562, 8575, 8580-8671.

^g Other specific types include histologies 8720-8790, 8930-8936, 8950-8983, 9000-9030, 9060-9110, 9260-9365, 9380-9539.

- Statistic not shown due to fewer than 16 cases during the time period.

SEER Observed Incidence, SEER Delay Adjusted Incidence and US Death Rates^a Cancer of the Thyroid, by Race and Sex

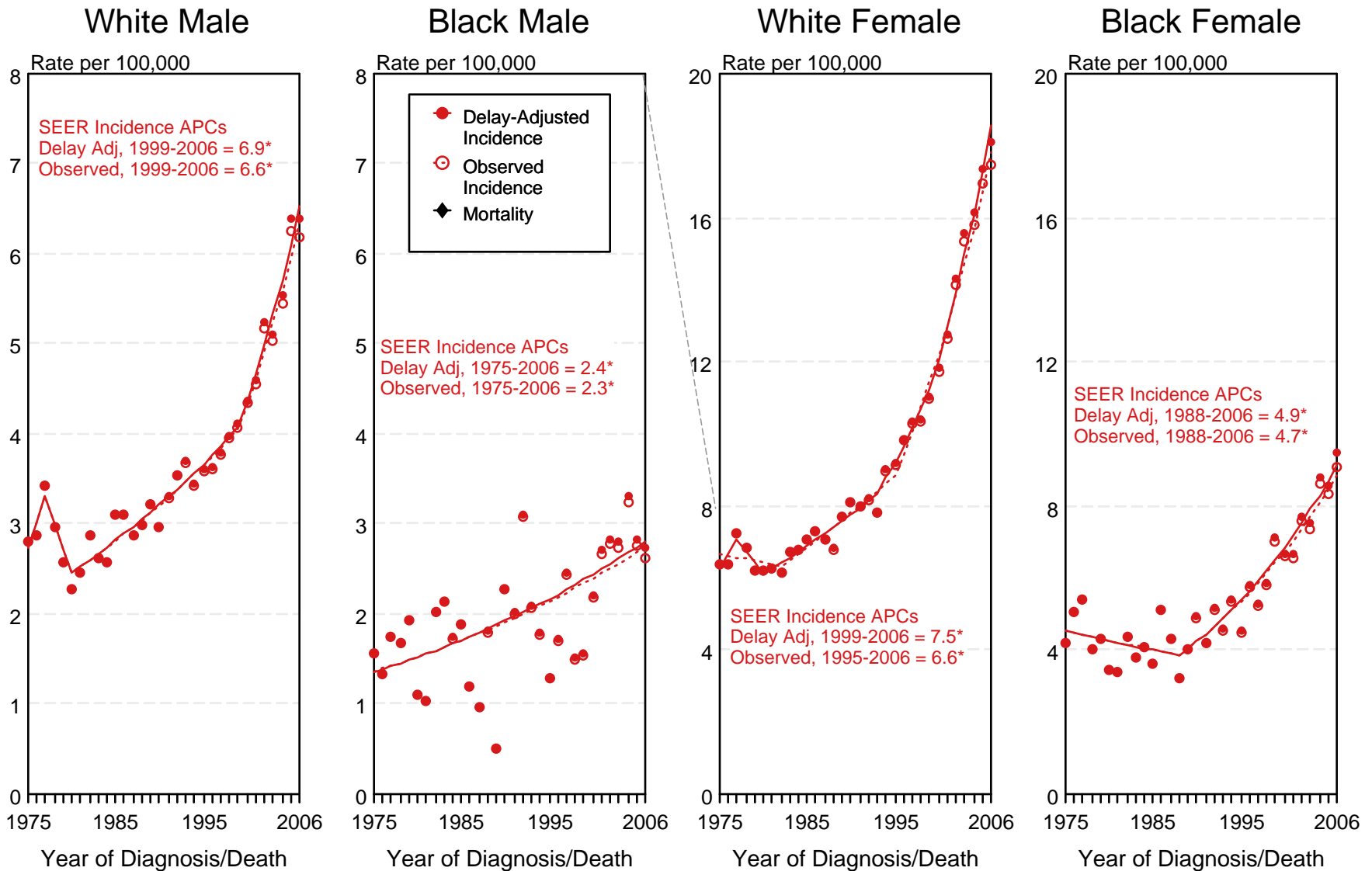


Figure 26.1

^a Source: SEER 9 areas and US Mortality Files (National Center for Health Statistics, CDC). Rates are age-adjusted to the 2000 US Std Population (19 age groups - Census P25-1103). Regression lines and APCs are calculated using the Joinpoint Regression Program Version 3.3.1, April 2008, National Cancer Institute. The APC is the Annual Percent Change for the regression line segments. The APC shown on the graph is for the most recent trend.

* The APC is significantly different from zero ($p < 0.05$).

SEER Incidence and US Death Rates^a Cancer of the Thyroid, Both Sexes

Joinpoint Analyses for Whites and Blacks from 1975-2006

and for Asian/Pacific Islanders, American Indians/Alaska Natives and Hispanics from 1992-2006

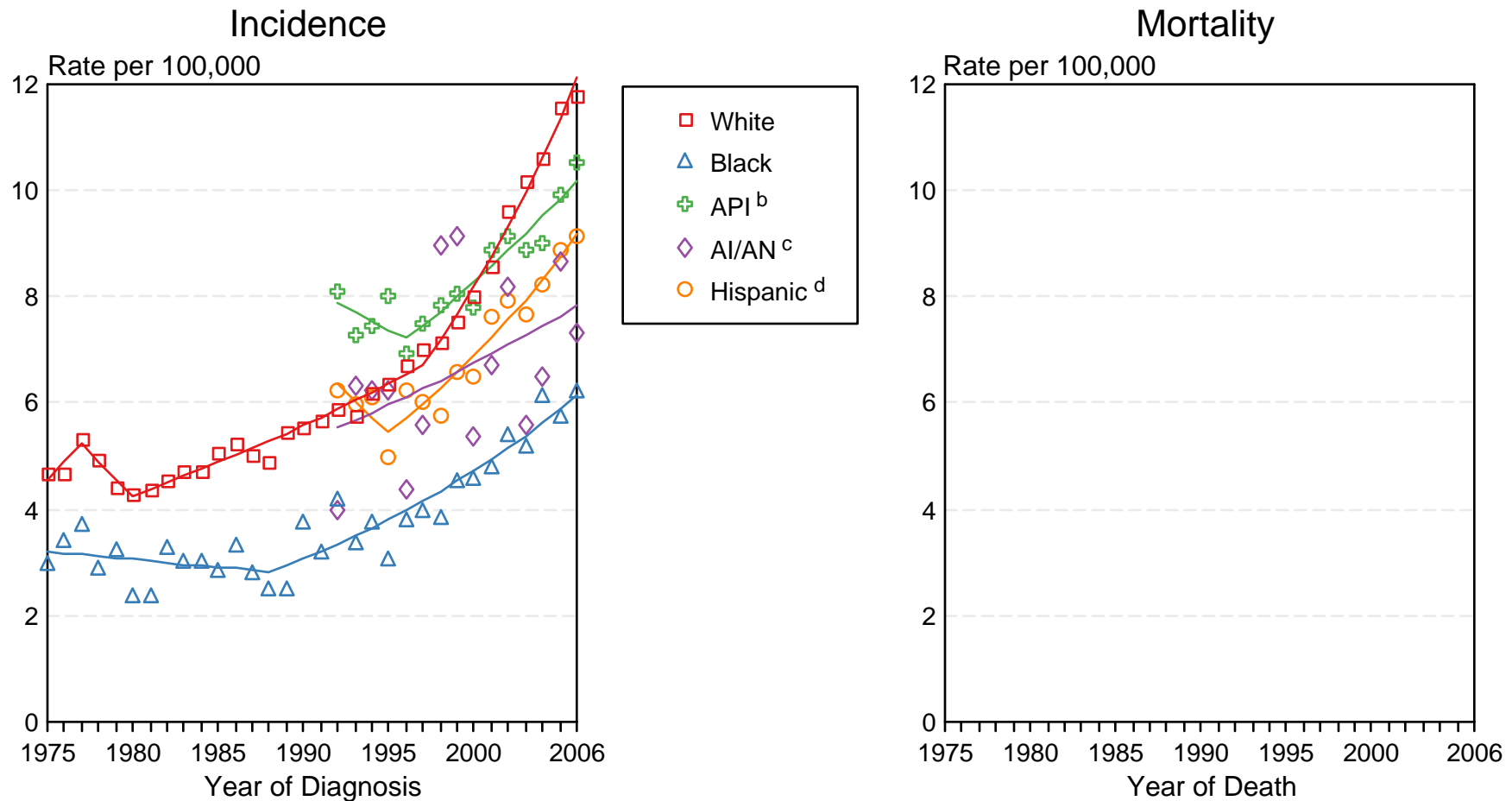


Figure 26.2

Source: Incidence data for whites and blacks are from the SEER 9 areas (San Francisco, Connecticut, Detroit, Hawaii, Iowa, New Mexico, Seattle, Utah, Atlanta).

Incidence data for Asian/Pacific Islanders, American Indians/Alaska Natives and Hispanics are from the SEER 13 Areas (SEER 9 Areas, San Jose-Monterey, Los Angeles, Alaska Native Registry and Rural Georgia). Mortality data are from US Mortality Files, National Center for Health Statistics, CDC.

^a Rates are age-adjusted to the 2000 US Std Population (19 age groups - Census P25-1103).

Regression lines are calculated using the Joinpoint Regression Program Version 3.3.1, April 2008, National Cancer Institute. Joinpoint analyses for Whites and Blacks during the 1975-2006 period allow a maximum of 4 joinpoints. Analyses for other ethnic groups during the period 1992-2006 allow a maximum of 2 joinpoints.

^b API = Asian/Pacific Islander.

^c AI/AN = American Indian/Alaska Native. Rates for American Indian/Alaska Native are based on the CHSDA(Contract Health Service Delivery Area) counties.

^d Hispanic is not mutually exclusive from whites, blacks, Asian/Pacific Islanders, and American Indians/Alaska Natives. Incidence data for Hispanics are based on NHIA and exclude cases from the Alaska Native Registry. Mortality data for Hispanics exclude cases from Connecticut, Maine, Maryland, Minnesota, New Hampshire, New York, North Dakota, Oklahoma, and Vermont.