

Table 19.1
Non-Hodgkin Lymphoma

Trends in SEER Incidence^{ab} and U.S. Mortality^c Using the Joinpoint Regression Program,
1975-2006 With up to Four Joinpoints, 1992-2006 With up to Two Joinpoints,
Both Sexes by Race/Ethnicity

	<u>Joinpoint Trend 1</u>		<u>Joinpoint Trend 2</u>		<u>Joinpoint Trend 3</u>		<u>Joinpoint Trend 4</u>		<u>Joinpoint Trend 5</u>		<u>AAPC^d</u>	
	Years	APC	Years	APC	Years	APC	Years	APC	Years	APC	1997-2006	2002-2006
<u>SEER 9 Delay-Adjusted Incidence^a, 1975-2006</u>												
All Races	1975-1991	3.6*	1991-2006	0.6*							0.6*	0.6*
White	1975-1990	3.8*	1990-2006	0.8*							0.8*	0.8*
Black	1975-1992	4.9*	1992-2006	1.1*							1.1*	1.1*
<u>SEER 13 Delay-Adjusted Incidence^b, 1992-2006</u>												
All Races	1992-2006	0.4*									0.4*	0.4*
White	1992-2006	0.5*									0.5*	0.5*
Black	1992-2006	1.1*									1.1*	1.1*
<u>SEER 9 Observed Incidence^a, 1975-2006</u>												
All Races	1975-1991	3.6*	1991-2004	0.6*	2004-2006	-2.1					0.0	-0.8
White	1975-1991	3.7*	1991-2006	0.5*							0.5*	0.5*
Black	1975-1993	4.7*	1993-2006	0.6							0.6	0.6
<u>SEER 13 Observed Incidence^b, 1992-2006</u>												
All Races	1992-2006	0.3									0.3*	0.3*
White	1992-2006	0.3*									0.3*	0.3*
White NH ^{ef}	1992-2006	0.5*									0.5*	0.5*
Black	1992-2006	0.8*									0.8*	0.8*
Black NH ^{ef}	1992-2006	0.7*									0.7*	0.7*
API ^e	1992-2006	-0.2									-0.2	-0.2
AI/AN ^{eg}	1992-2006	3.2									3.2*	3.2*
Hispanic ^e	1992-2006	-0.1									-0.1	-0.1
<u>U.S. Cancer Mortality^c, 1975-2006</u>												
All Races												
White												
Black												
<u>U.S. Cancer Mortality^c, 1992-2006</u>												
All Races												
White												
White NH ^{ef}												
Black												
Black NH ^{ef}												
API ^e												
AI/AN ^{eg}												
Hispanic ^e												

Joinpoint Regression Program Version 3.3.1, April 2008, National Cancer Institute. (<http://srab.cancer.gov/joinpoint/>).

The APC is the Annual Percent Change based on rates age-adjusted to the 2000 US Std Population (19 age groups - Census P25-1130).

^a Trends are from the SEER 9 areas (San Francisco, Connecticut, Detroit, Hawaii, Iowa, New Mexico, Seattle, Utah, and Atlanta).

^b Trends are from the SEER 13 areas (SEER 9 Areas, Los Angeles, San Jose-Monterey, Rural Georgia, and the Alaska Native Registry).

^c Trends are from US Mortality Files, National Center for Health Statistics, Centers for Disease Control and Prevention.

^d The AAPC is the Average Annual Percent Change and is based on the APCs calculated by Joinpoint.

^e API - Asian/Pacific Islander, AI/AN - American Indian/Alaska Native, NH - Non-Hispanic

^f Hispanic and Non-Hispanic are not mutually exclusive from whites, blacks, Asian/Pacific Islanders, and American Indians/Alaska

Natives. Incidence data for Hispanics and Non-Hispanics are based on NHIA and exclude cases from the Alaska Native Registry.

The Hispanic and Non-Hispanic mortality trends exclude deaths from CT, ME, MD, MN, NH, NY, ND, OK and VT.

^g Data for American Indian/Alaska Native are based on the CHSDA (Contract Health Service Delivery Area) counties.

* The APC/AAPC is significantly different from zero ($p < .05$).

- Joinpoint regression line analysis could not be performed on data series.

Table 19.2
Non-Hodgkin Lymphoma

Trends in SEER Incidence^{ab} and U.S. Mortality^c Using the Joinpoint Regression Program,
1975-2006 With up to Four Joinpoints, 1992-2006 With up to Two Joinpoints,
Males by Race/Ethnicity

	<u>Joinpoint Trend 1</u>		<u>Joinpoint Trend 2</u>		<u>Joinpoint Trend 3</u>		<u>Joinpoint Trend 4</u>		<u>Joinpoint Trend 5</u>		<u>AAPC^d</u>	
	Years	APC	Years	APC	Years	APC	Years	APC	Years	APC	1997-2006	2002-2006
<u>SEER 9 Delay-Adjusted Incidence^a, 1975-2006</u>												
All Races	1975-1991	4.2*	1991-2006	0.3							0.3	0.3
White	1975-1990	4.5*	1990-2006	0.5*							0.5*	0.5*
Black	1975-1994	5.4*	1994-2006	-0.3							-0.3	-0.3
<u>SEER 13 Delay-Adjusted Incidence^b, 1992-2006</u>												
All Races	1992-2006	0.0									0.0	0.0
White	1992-2006	0.1									0.1	0.1
Black	1992-2006	0.1									0.1	0.1
<u>SEER 9 Observed Incidence^a, 1975-2006</u>												
All Races	1975-1991	4.3*	1991-2006	0.1							0.1	0.1
White	1975-1991	4.3*	1991-2006	0.1							0.1	0.1
Black	1975-1994	5.5*	1994-2006	-0.6							-0.6	-0.6
<u>SEER 13 Observed Incidence^b, 1992-2006</u>												
All Races	1992-2006	-0.2									-0.2	-0.2
White	1992-2006	-0.1									-0.1	-0.1
White NH ^{ef}	1992-2006	0.1									0.1	0.1
Black	1992-2006	-0.2									-0.2	-0.2
Black NH ^{ef}	1992-2006	-0.3									-0.3	-0.3
API ^e	1992-2006	-0.5									-0.5	-0.5
AI/AN ^{eg}	1992-2006	2.9									2.9	2.9
Hispanic ^e	1992-2006	-0.7									-0.7	-0.7
<u>U.S. Cancer Mortality^c, 1975-2006</u>												
All Races												
White												
Black												
<u>U.S. Cancer Mortality^c, 1992-2006</u>												
All Races												
White												
White NH ^{ef}												
Black												
Black NH ^{ef}												
API ^e												
AI/AN ^{eg}												
Hispanic ^e												

Joinpoint Regression Program Version 3.3.1, April 2008, National Cancer Institute. (<http://srab.cancer.gov/joinpoint/>).

The APC is the Annual Percent Change based on rates age-adjusted to the 2000 US Std Population (19 age groups - Census P25-1130).

^a Trends are from the SEER 9 areas (San Francisco, Connecticut, Detroit, Hawaii, Iowa, New Mexico, Seattle, Utah, and Atlanta).

^b Trends are from the SEER 13 areas (SEER 9 Areas, Los Angeles, San Jose-Monterey, Rural Georgia, and the Alaska Native Registry).

^c Trends are from US Mortality Files, National Center for Health Statistics, Centers for Disease Control and Prevention.

^d The AAPC is the Average Annual Percent Change and is based on the APCs calculated by Joinpoint.

^e API - Asian/Pacific Islander, AI/AN - American Indian/Alaska Native, NH - Non-Hispanic

^f Hispanic and Non-Hispanic are not mutually exclusive from whites, blacks, Asian/Pacific Islanders, and American Indians/Alaska

Natives. Incidence data for Hispanics and Non-Hispanics are based on NHIA and exclude cases from the Alaska Native Registry.

The Hispanic and Non-Hispanic mortality trends exclude deaths from CT, ME, MD, MN, NH, NY, ND, OK and VT.

^g Data for American Indian/Alaska Native are based on the CHSDA (Contract Health Service Delivery Area) counties.

* The APC/AAPC is significantly different from zero (p<.05).

- Joinpoint regression line analysis could not be performed on data series.

Table 19.3
Non-Hodgkin Lymphoma

Trends in SEER Incidence^{ab} and U.S. Mortality^c Using the Joinpoint Regression Program,
1975-2006 With up to Four Joinpoints, 1992-2006 With up to Two Joinpoints,
Females by Race/Ethnicity

	<u>Joinpoint Trend 1</u>		<u>Joinpoint Trend 2</u>		<u>Joinpoint Trend 3</u>		<u>Joinpoint Trend 4</u>		<u>Joinpoint Trend 5</u>		<u>AAPC^d</u>	
	Years	APC	Years	APC	Years	APC	Years	APC	Years	APC	1997-2006	2002-2006
<u>SEER 9 Delay-Adjusted Incidence^a, 1975-2006</u>												
All Races	1975-1990	2.9*	1990-2006	1.1*							1.1*	1.1*
White	1975-1990	2.9*	1990-2006	1.2*							1.2*	1.2*
Black	1975-2006	2.8*									2.8*	2.8*
<u>SEER 13 Delay-Adjusted Incidence^b, 1992-2006</u>												
All Races	1992-2006	1.1*									1.1*	1.1*
White	1992-2006	1.2*									1.2*	1.2*
Black	1992-2006	2.5*									2.5*	2.5*
<u>SEER 9 Observed Incidence^a, 1975-2006</u>												
All Races	1975-1990	2.8*	1990-2004	1.2*	2004-2006	-2.5					0.3	-0.7
White	1975-1990	2.9*	1990-2006	1.0*							1.0*	1.0*
Black	1975-2006	2.6*									2.6*	2.6*
<u>SEER 13 Observed Incidence^b, 1992-2006</u>												
All Races	1992-2004	1.2*	2004-2006	-2.6							0.4	-0.7
White	1992-2006	0.9*									0.9*	0.9*
White NH ^{ef}	1992-2006	1.0*									1.0*	1.0*
Black	1992-2006	2.1*									2.1*	2.1*
Black NH ^{ef}	1992-2006	2.1*									2.1*	2.1*
API ^e	1992-2006	0.3									0.3	0.3
AI/AN ^{eg}	1992-2006	3.9									3.9*	3.9*
Hispanic ^e	1992-2006	0.7*									0.7*	0.7*
<u>U.S. Cancer Mortality^c, 1975-2006</u>												
All Races												
White												
Black												
<u>U.S. Cancer Mortality^c, 1992-2006</u>												
All Races												
White												
White NH ^{ef}												
Black												
Black NH ^{ef}												
API ^e												
AI/AN ^{eg}												
Hispanic ^e												

Joinpoint Regression Program Version 3.3.1, April 2008, National Cancer Institute. (<http://srab.cancer.gov/joinpoint/>).

The APC is the Annual Percent Change based on rates age-adjusted to the 2000 US Std Population (19 age groups - Census P25-1130).

^a Trends are from the SEER 9 areas (San Francisco, Connecticut, Detroit, Hawaii, Iowa, New Mexico, Seattle, Utah, and Atlanta).

^b Trends are from the SEER 13 areas (SEER 9 Areas, Los Angeles, San Jose-Monterey, Rural Georgia, and the Alaska Native Registry).

^c Trends are from US Mortality Files, National Center for Health Statistics, Centers for Disease Control and Prevention.

^d The AAPC is the Average Annual Percent Change and is based on the APCs calculated by Joinpoint.

^e API - Asian/Pacific Islander, AI/AN - American Indian/Alaska Native, NH - Non-Hispanic

^f Hispanic and Non-Hispanic are not mutually exclusive from whites, blacks, Asian/Pacific Islanders, and American Indians/Alaska

Natives. Incidence data for Hispanics and Non-Hispanics are based on NHIA and exclude cases from the Alaska Native Registry.

The Hispanic and Non-Hispanic mortality trends exclude deaths from CT, ME, MD, MN, NH, NY, ND, OK and VT.

^g Data for American Indian/Alaska Native are based on the CHSDA (Contract Health Service Delivery Area) counties.

* The APC/AAPC is significantly different from zero ($p < .05$).

- Joinpoint regression line analysis could not be performed on data series.

Table 19.4
Non-Hodgkin Lymphoma

Age-adjusted SEER Incidence^a Rates by Year, Race and Sex

Year of Diagnosis:	All Races			Whites			Blacks		
	Total	Males	Females	Total	Males	Females	Total	Males	Females
1975	11.06	12.89	9.58	11.61	13.49	10.11	6.36	7.31	5.31
1976	11.20	12.82	10.04	11.65	13.27	10.50	5.95	7.45	4.87
1977	11.18	12.92	9.82	11.64	13.50	10.20	6.64	7.23	6.10
1978	11.93	14.30	10.12	12.49	14.79	10.74	7.15	9.46	5.17
1979	12.51	14.19	11.20	12.98	14.58	11.75	8.39	11.81	5.91
1980	12.61	15.01	10.78	12.95	15.26	11.19	8.77	10.89	7.20
1981	13.58	15.90	11.81	14.05	16.33	12.35	7.39	10.52	4.98
1982	13.39	15.55	11.61	14.01	16.39	12.05	10.27	10.22	10.01
1983	13.99	16.61	11.96	14.64	17.52	12.42	10.28	10.88	9.62
1984	15.19	18.32	12.77	15.95	19.11	13.51	9.46	12.52	6.92
1985	15.49	18.36	13.17	16.26	19.22	13.84	9.89	11.96	8.32
1986	15.91	19.42	13.02	16.82	20.53	13.77	10.63	13.13	8.46
1987	16.74	20.79	13.43	17.71	22.14	14.02	10.43	10.43	10.09
1988	17.24	21.32	14.08	18.20	22.40	14.90	11.57	15.79	8.47
1989	17.33	21.62	13.82	18.33	22.99	14.48	11.67	14.17	9.82
1990	18.52	22.99	14.81	19.36	23.96	15.54	13.78	17.51	10.86
1991	18.79	23.74	14.57	19.67	24.81	15.26	14.03	18.72	10.37
1992	18.62	23.03	14.95	19.57	23.95	15.86	13.61	18.73	9.63
1993	18.85	23.45	15.00	19.64	24.30	15.70	14.04	19.37	9.67
1994	19.92	24.96	15.74	20.64	25.56	16.50	14.35	21.50	8.65
1995	19.90	25.33	15.35	20.61	26.09	15.95	16.49	23.26	11.25
1996	19.36	24.20	15.40	20.23	25.20	16.13	15.16	18.92	11.97
1997	19.91	24.40	16.41	20.80	25.11	17.41	16.23	23.93	10.84
1998	19.51	22.86	16.72	20.50	23.94	17.62	14.05	16.38	12.19
1999	19.82	24.47	16.16	20.78	25.38	17.13	14.10	18.21	10.97
2000	19.61	24.06	16.00	20.73	25.35	16.96	13.91	18.36	10.63
2001	19.87	24.25	16.31	20.65	25.26	16.88	15.65	18.06	13.55
2002	19.93	23.87	16.81	20.99	25.11	17.67	14.24	17.09	12.07
2003	20.43	24.49	17.32	21.51	25.73	18.22	15.82	19.22	13.36
2004	20.90	25.29	17.50	21.80	26.21	18.35	17.78	23.12	13.86
2005	20.20	24.79	16.54	21.32	25.92	17.59	15.94	18.86	13.51
2006	19.52	23.33	16.56	20.57	24.38	17.58	15.54	19.83	12.38
1975-2006	17.47	21.34	14.40	18.20	22.16	15.04	12.99	16.51	10.22

^a SEER 9 areas (San Francisco, Connecticut, Detroit, Hawaii, Iowa, New Mexico, Seattle, Utah, and Atlanta). Rates are per 100,000 and are age-adjusted to the 2000 US Std Population (19 age groups - Census P25-1130).
- Statistic not shown. Rate based on less than 16 cases for the time interval.

Table 19.6
Non-Hodgkin Lymphoma

SEER Incidence^a and U.S. Death^b Rates, Age-Adjusted and Age-Specific Rates, by Race and Sex

	All Races			Whites			Blacks		
	Total	Males	Females	Total	Males	Females	Total	Males	Females
<u>SEER Incidence</u>									
<u>Age at Diagnosis</u>									
Age-Adjusted Rates, 2002-2006									
All ages	19.5	23.5	16.4	20.4	24.4	17.2	14.8	18.3	12.2
Under 65	9.5	11.2	7.7	9.7	11.5	7.9	9.6	11.9	7.5
65 and over	89.2	108.0	76.5	94.4	113.8	81.3	51.3	62.0	44.4
All ages (IARC world std) ^c	13.0	15.5	10.9	13.5	16.0	11.3	10.8	13.3	8.7
Age-Specific Rates, 2002-2006									
<1	-	-	-	-	-	-	-	-	-
1-4	0.6	0.8	0.4	0.6	0.8	0.4	-	-	-
5-9	0.8	1.1	0.5	0.9	1.2	0.5	0.8	1.0	-
10-14	1.2	1.5	0.9	1.2	1.5	0.9	1.2	1.6	-
15-19	1.8	2.3	1.3	1.8	2.4	1.2	2.0	2.4	1.6
20-24	2.4	2.9	1.9	2.3	2.8	1.8	2.7	3.0	2.4
25-29	3.2	3.7	2.7	3.2	3.6	2.8	3.8	5.4	2.4
30-34	4.7	5.5	4.0	4.6	5.4	3.7	6.5	7.6	5.4
35-39	7.2	8.9	5.4	7.1	8.9	5.3	9.5	12.0	7.3
40-44	10.2	12.8	7.6	10.4	13.1	7.6	11.9	15.1	9.0
45-49	15.1	18.1	12.1	15.3	18.4	12.2	16.8	20.9	13.1
50-54	22.5	26.5	18.7	23.1	27.1	19.2	23.5	29.5	18.4
55-59	31.3	36.0	26.9	32.3	36.8	28.0	28.6	36.8	21.8
60-64	46.5	54.2	39.5	49.2	57.1	41.8	34.5	41.0	29.4
65-69	62.8	72.1	54.8	67.0	76.2	58.9	42.3	51.8	35.2
70-74	82.5	95.1	72.3	87.6	100.6	76.9	52.5	61.1	46.5
75-79	102.0	124.0	86.3	108.1	130.2	92.0	58.1	74.3	48.0
80-84	118.1	147.1	99.8	124.7	155.3	105.5	56.0	67.5	49.7
85+	105.6	140.8	89.1	110.4	147.8	93.2	51.1	58.9	47.9
<u>U.S. Mortality</u>									
<u>Age at Death</u>									
Age-Adjusted Rates, 2002-2006									
All ages									
Under 65									
65 and over									
All ages (IARC world std) ^c									
Age-Specific Rates, 2002-2006									
<1									
1-4									
5-9									
10-14									
15-19									
20-24									
25-29									
30-34									
35-39									
40-44									
45-49									
50-54									
55-59									
60-64									
65-69									
70-74									
75-79									
80-84									
85+									

^a SEER 17 areas. Rates are per 100,000 and are age-adjusted to the 2000 US Std Population (19 age groups - Census P25-1130), unless noted.

^b US Mortality Files, National Center for Health Statistics, Centers for Disease Control and Prevention.

^c Rates are per 100,000 and are age-adjusted to the 2000 US Std Population (19 age groups - Census P25-1130), unless noted.

^c Rates are per 100,000 and are age-adjusted to the IARC world standard population.

- Statistic not shown. Rate based on less than 16 cases for the time interval.

Table 19.7
Non-Hodgkin Lymphoma

Survival Rates, by Race, Sex, Diagnosis Year and Age

	All Races			Whites			Blacks		
	Total	Males	Females	Total	Males	Females	Total	Males	Females
5-Year Relative Survival Rates									
Year of Diagnosis:									
1960-1963 ^a	-	-	-	31	31	31	-	-	-
1970-1973 ^a	-	-	-	41	39	43	-	-	-
1975-1977 ^b	48.0	46.9	49.1	48.4	47.8	48.9	49.0	42.6	56.1 ^f
1978-1980 ^b	49.9	47.9	52.0	50.0	48.2	51.8	52.3	48.0	58.1 ^f
1981-1983 ^b	52.6	52.2	52.9	52.8	52.6	53.1	50.4	49.5	51.5
1984-1986 ^b	53.3	51.4	55.3	53.7	52.0	55.6	47.7	44.9	51.3
1987-1989 ^b	52.4	48.7	56.9	52.8	49.2	57.2	47.4	42.2	53.7
1990-1992 ^b	51.9	47.4	57.8	53.0	48.3	58.7	42.1	38.0	47.8
1993-1995 ^b	53.7	49.3	59.4	54.5	50.4	59.8	42.0	35.3	55.0
1996-1998 ^b	60.2	58.0	63.0	61.0	58.7	63.7	54.4	52.3	57.7
1999-2005 ^b	68.7 ^e	66.7 ^e	71.1 ^e	70.1 ^e	68.4 ^e	72.1 ^e	59.9 ^e	55.0	65.6
5-Year Period Survival Rates^{cd}									
Year of Diagnosis:									
1999-2005	68.6	66.9	70.5	69.4	68.0	71.0	60.8	56.5	65.8
Stage Distribution (%) 1999-2005^c									
All Stages									
Number of cases	75,219	40,248	34,971	63,822	34,094	29,728	5,545	3,037	2,508
Percent	100%	100%	100%	100%	100%	100%	100%	100%	100%
Localized	30	28	31	29	28	31	28	25	30
Regional	15	15	15	15	15	15	14	14	15
Distant	47	49	44	47	49	45	50	53	46
Unstaged	9	8	9	8	8	9	8	8	9
5-Year Relative Survival Rates, 1999-2005^c									
Age at Diagnosis:									
Ages <45	74.5	71.0	80.4	76.7	73.1	82.8	60.5	56.1	67.2
Ages 45-54	75.2	71.4	80.9	77.1	73.3	83.0	59.4	53.5	67.7
Ages 55-64	71.8	68.2	76.4	72.7	69.4	76.9	62.5	55.7	70.4
Ages 65-74	64.5	61.1	67.9	65.0	61.7	68.4	54.8	47.2	61.5
Ages 75+	51.9	51.1	52.4	52.8	51.8	53.5	45.6	47.9 ^f	42.9
Ages <65	73.8	70.2	79.0	75.3	71.9	80.4	60.7	55.3	68.4
Ages 65+	58.4	56.8	59.9	59.1	57.4	60.6	51.3	47.6	53.2
Stage:									
All Stages	67.2	65.2	69.4	68.0	66.3	70.0	58.4	54.0	63.8
Localized	81.0	79.8	82.3	81.5	80.7	82.3	77.1	71.0	82.2
Regional	70.9	69.3	72.5	71.8	70.0	73.6	63.4	61.5	65.2
Distant	57.4	55.8	59.5	59.0	57.4	60.9	45.6	43.2	48.9
Unstaged	65.1	63.0	67.2	64.4	62.2	66.6	60.7	55.4	65.6

^a Rates are based on End Results data from a series of hospital registries and one population-based registry.
^b Rates are from the SEER 9 areas (San Francisco, Connecticut, Detroit, Hawaii, Iowa, New Mexico, Seattle, Utah, Atlanta).
Rates are based on follow-up of patients into 2006.
^c Rates are from the SEER 17 areas (San Francisco, Connecticut, Detroit, Hawaii, Iowa, New Mexico, Seattle, Utah, Atlanta, San Jose-Monterey, Los Angeles, Alaska Native Registry, Rural Georgia, California excluding SF/SJM/LA, Kentucky, Louisiana and New Jersey). California excluding SF/SJM/LA, Kentucky, Louisiana, and New Jersey contribute cases for diagnosis years 2000-2005. The remaining 13 SEER Areas contribute cases for the entire period 1999-2005. Rates are based on follow-up of patients into 2006.
^d Period survival provides a more up-to-date estimate of survival by piecing together the most recent conditional survival estimates from several cohorts. It is computed here using three year calendar blocks (2003-2005: 0-1 year survival), (2002-2004: 1-2 year survival), (2001-2003: 2-3 year survival), (2000-2002: 3-4 year survival), (1999-2001: 4-5 years survival).
^e The difference in rates between 1975-1977 and 1999-2005 is statistically significant (p<.05).
^f The standard error of the survival rate is between 5 and 10 percentage points.
^g The standard error of the survival rate is greater than 10 percentage points.
- Statistic could not be calculated due to fewer than 25 cases during the time period.

Table 19.8
Non-Hodgkin Lymphoma

Survival Rates^a
By Year of Diagnosis

All Races, Males and Females

	Year of Diagnosis																			
	1975- 1979	1980- 1984	1985- 1989	1990	1991	1992	1993	1994	1995	1996	1997	1998	1999	2000	2001	2002	2003	2004	2005	
Relative Survival Rates (SEER ^b)																				
1-year	71.3	74.1	72.1	70.8	70.4	71.5	72.0	71.4	70.8	73.9	76.4	77.3	78.0	77.6	79.3	81.4	80.9	81.6	82.0	
2-year	61.1	64.9	63.5	61.8	61.6	63.0	64.1	63.8	62.5	66.4	68.9	70.6	71.7	72.1	73.9	76.5	76.5	76.6		
3-year	55.7	59.8	59.1	57.3	57.4	58.8	59.5	59.4	58.1	62.9	65.5	67.2	67.7	68.8	71.1	74.0	74.3			
4-year	52.0	56.1	55.5	53.4	54.8	55.6	56.7	56.1	55.5	59.8	62.8	64.8	65.7	66.9	69.4	72.5				
5-year	48.5	52.7	52.5	51.2	52.1	52.5	54.0	54.0	53.1	57.3	60.7	62.6	63.8	65.7	67.8					
6-year	45.5	49.7	50.0	48.9	49.4	50.2	52.0	52.2	51.0	55.8	58.6	60.2	61.4	64.6						
7-year	43.1	47.5	47.9	46.2	46.5	47.9	50.4	50.5	49.5	54.1	56.9	58.8	60.0							
8-year	41.0	45.7	45.7	44.3	44.3	46.5	48.6	49.0	48.1	52.5	55.1	58.0								
9-year	39.4	43.9	43.9	43.1	42.8	45.6	47.3	47.5	47.2	51.8	54.1									
10-year	38.2	42.4	42.5	42.2	41.8	44.2	46.2	46.1	46.9	50.9										
11-year	36.9	41.3	41.4	40.6	40.6	43.1	45.1	44.9	46.1											
12-year	36.0	40.2	40.0	39.3	39.9	42.3	44.3	44.4												
13-year	35.4	39.3	39.1	38.4	39.4	41.5	43.0													
14-year	34.5	38.5	38.4	37.7	38.4	40.4														
15-year	33.5	37.5	37.6	37.6	37.3															
16-year	32.7	36.7	37.0	36.8																
17-year	32.5	36.2	36.6																	
18-year	32.3	35.8																		
19-year	31.8	35.3																		
20-year	31.3	34.8																		

^a

Survival rates are relative rates expressed as percents.

^b

Rates are from the SEER 9 areas (San Francisco, Connecticut, Detroit, Hawaii, Iowa, New Mexico, Seattle, Utah, and Atlanta).

Table 19.9
Non-Hodgkin Lymphoma

Survival Rates^a
By Year of Diagnosis

All Races, Males

Year of Diagnosis

	1975- 1979	1980- 1984	1985- 1989	1990	1991	1992	1993	1994	1995	1996	1997	1998	1999	2000	2001	2002	2003	2004	2005
Relative Survival Rates (SEER ^b)																			
1-year	70.5	73.8	69.8	66.7	66.9	68.5	68.7	68.2	67.3	71.8	75.6	75.5	76.7	76.7	78.3	81.1	80.2	80.9	81.5
2-year	60.3	64.9	61.0	57.8	57.4	58.4	59.9	60.3	58.9	63.9	67.4	68.7	69.9	70.9	71.9	75.7	75.4	76.4	
3-year	54.5	59.5	56.3	52.8	53.0	54.6	55.1	55.5	54.6	60.3	64.1	65.4	65.0	67.4	68.9	72.9	73.4		
4-year	50.7	55.5	52.3	49.1	50.4	50.9	52.0	52.1	51.8	56.8	61.3	63.1	62.6	64.9	66.8	71.4			
5-year	47.0	52.1	49.3	46.9	48.3	46.9	49.2	49.7	49.1	54.4	58.9	60.6	60.7	63.3	65.1				
6-year	44.3	48.9	46.7	45.2	45.4	45.1	47.2	48.3	47.3	52.1	57.0	58.2	58.1	62.3					
7-year	42.0	46.6	44.6	42.5	42.7	42.9	46.4	46.8	45.8	50.2	55.3	56.7	56.9						
8-year	40.1	44.8	42.5	40.9	40.3	41.6	44.7	45.0	44.1	48.7	53.3	55.9							
9-year	38.2	43.1	40.7	39.6	38.6	40.6	43.6	43.2	43.4	48.0	52.0								
10-year	36.9	41.3	39.4	38.8	37.7	39.0	42.9	42.1	43.2	47.3									
11-year	35.9	40.1	38.2	37.6	36.8	38.6	41.5	41.3	42.4										
12-year	35.3	39.2	37.0	36.2	36.3	38.0	41.0	40.7											
13-year	34.3	38.6	36.3	35.2	35.8	36.9	39.8												
14-year	33.2	37.9	35.5	34.6	35.0	35.1													
15-year	32.0	37.0	34.8	34.4	33.7														
16-year	31.3	36.0	34.2	33.1															
17-year	31.0	35.6	33.6																
18-year	30.9	35.3																	
19-year	30.7	35.1																	
20-year	30.5	34.4																	

^a

Survival rates are relative rates expressed as percents.

^b

Rates are from the SEER 9 areas (San Francisco, Connecticut, Detroit, Hawaii, Iowa, New Mexico, Seattle, Utah, and Atlanta).

Table 19.10
Non-Hodgkin Lymphoma

Survival Rates^a
By Year of Diagnosis

All Races, Females

Year of Diagnosis

	1975- 1979	1980- 1984	1985- 1989	1990	1991	1992	1993	1994	1995	1996	1997	1998	1999	2000	2001	2002	2003	2004	2005
Relative Survival Rates (SEER ^b)																			
1-year	72.1	74.5	74.9	76.0	75.1	75.4	76.0	75.6	75.6	76.5	77.5	79.4	79.6	78.8	80.5	81.7	81.6	82.5	82.6
2-year	61.9	64.8	66.5	66.9	67.2	68.7	69.5	68.2	67.4	69.6	70.7	72.7	73.8	73.5	76.3	77.3	77.5	76.9	
3-year	56.9	60.2	62.4	62.9	63.2	64.1	65.1	64.5	62.7	66.2	67.2	69.3	71.0	70.4	73.7	75.2	75.3		
4-year	53.3	56.8	59.3	58.9	60.7	61.6	62.6	61.4	60.4	63.5	64.8	66.8	69.4	69.2	72.6	73.7			
5-year	50.0	53.4	56.3	56.4	57.3	59.6	60.2	59.6	58.5	61.1	62.8	64.8	67.4	68.7	71.1				
6-year	46.7	50.7	54.0	53.5	54.8	56.6	58.1	57.5	56.2	60.5	60.6	62.5	65.4	67.3					
7-year	44.2	48.5	51.9	50.9	51.8	54.3	55.4	55.4	54.7	59.1	58.9	61.2	63.8						
8-year	41.9	46.6	49.5	48.6	49.9	52.8	53.6	54.3	53.5	57.4	57.3	60.5							
9-year	40.5	44.8	47.8	47.6	48.6	52.1	52.2	53.2	52.6	56.7	56.7								
10-year	39.5	43.5	46.2	46.6	47.2	50.9	50.5	51.4	52.0	55.4									
11-year	37.9	42.6	45.2	44.4	45.9	48.8	49.9	49.8	51.3										
12-year	36.8	41.2	43.8	43.4	44.8	47.9	48.7	49.2											
13-year	36.5	40.0	42.6	42.5	44.4	47.4	47.4												
14-year	35.7	39.2	42.0	41.8	43.2	47.3													
15-year	34.9	38.0	41.1	41.5	42.6														
16-year	34.1	37.5	40.6	41.5															
17-year	33.9	36.9	40.5																
18-year	33.6	36.4																	
19-year	32.9	35.6																	
20-year	32.2	35.2																	

^a

Survival rates are relative rates expressed as percents.

^b

Rates are from the SEER 9 areas (San Francisco, Connecticut, Detroit, Hawaii, Iowa, New Mexico, Seattle, Utah, and Atlanta).

Table 19.11
Non-Hodgkin Lymphoma

Number of Cases

By SEER Location and Year of Diagnosis, 1975-2006

All Races, Males, All Ages

SEER Location	Year of Diagnosis													
	1975- 1979	1980- 1981	1982- 1983	1984- 1985	1986- 1987	1988- 1989	1990- 1991	1992- 1993	1994- 1995	1996- 1997	1998- 1999	2000- 2001	2002- 2003	2004- 2006
SEER 9 ^b	5223	2505	2702	3174	3626	3987	4572	4726	5316	5238	5241	5521	5715	9073
SEER 9 except SF-Oakland	4284	2087	2265	2599	2818	3085	3508	3693	4151	4230	4345	4478	4773	7646
San Francisco- Oakland SMSA ^c	939	418	437	575	808	902	1064	1033	1165	1008	896	1043	942	1427
San Francisco City/County	245	96	123	210	326	393	467	410	449	352	213	255	218	375

Age-Adjusted Cancer Incidence Rates^a

By SEER Location and Year of Diagnosis, 1975-2006

All Races, Males, All Ages

SEER Location	Year of Diagnosis													
	1975- 1979	1980- 1981	1982- 1983	1984- 1985	1986- 1987	1988- 1989	1990- 1991	1992- 1993	1994- 1995	1996- 1997	1998- 1999	2000- 2001	2002- 2003	2004- 2006
SEER 9 ^b	13.4	15.5	16.1	18.3	20.1	21.5	23.4	23.2	25.1	24.3	23.7	24.2	24.2	24.4
SEER 9 except SF-Oakland	13.2	15.4	16.1	18.1	18.8	20.0	21.7	21.8	23.5	23.5	23.4	23.3	24.0	24.5
San Francisco- Oakland SMSA ^c	14.8	15.8	16.0	19.5	26.7	28.5	31.7	30.5	33.5	28.7	25.1	28.4	24.9	24.3
San Francisco City/County	14.3	14.4	17.6	29.3	44.4	51.9	61.0	52.3	57.3	44.5	27.4	32.3	26.4	30.6

^a Rates are per 100,000 males and are age-adjusted to the 2000 US Std Population (19 age groups - Census P25-1130).

^b The SEER 9 areas are San Francisco-Oakland SMSA, Connecticut, Detroit, Hawaii, Iowa, New Mexico, Seattle, Utah and Atlanta.

^c The San Francisco-Oakland SMSA represents 15% of all persons in the SEER areas. For this age group, all SEER areas may not be generalizable to the United States for Non-Hodgkin Lymphoma.

- Statistic not shown. Rate based on less than 4 cases for the time interval.

Table 19.12
Non-Hodgkin Lymphoma

Number of Cases

By SEER Location and Year of Diagnosis, 1975-2006

All Races, Males, Ages 0-19

Year of Diagnosis

SEER Location	1975- 1979	1980- 1981	1982- 1983	1984- 1985	1986- 1987	1988- 1989	1990- 1991	1992- 1993	1994- 1995	1996- 1997	1998- 1999	2000- 2001	2002- 2003	2004- 2006
SEER 9 ^b	223	88	108	89	94	85	100	88	119	105	106	119	127	154
SEER 9 except SF-Oakland	191	79	95	80	80	77	86	73	106	84	94	99	115	126
San Francisco- Oakland SMSA ^c	32	9	13	9	14	8	14	15	13	21	12	20	12	28
San Francisco City/County	9	<4	<4	<4	<4	0	<4	<4	<4	<4	<4	0	<4	5

Age-Adjusted Cancer Incidence Rates^a

By SEER Location and Year of Diagnosis, 1975-2006

All Races, Males, Ages 0-19

Year of Diagnosis

SEER Location	1975- 1979	1980- 1981	1982- 1983	1984- 1985	1986- 1987	1988- 1989	1990- 1991	1992- 1993	1994- 1995	1996- 1997	1998- 1999	2000- 2001	2002- 2003	2004- 2006
SEER 9 ^b	1.2	1.3	1.6	1.3	1.4	1.3	1.5	1.3	1.6	1.4	1.4	1.5	1.6	1.3
SEER 9 except SF-Oakland	1.2	1.3	1.6	1.4	1.4	1.3	1.5	1.2	1.7	1.3	1.4	1.5	1.7	1.2
San Francisco- Oakland SMSA ^c	1.4	1.0	1.5	1.0	1.6	0.9	1.5	1.6	1.3	2.1	1.2	1.9	1.2	1.8
San Francisco City/County	2.3	-	-	-	-	0.0	-	-	-	-	-	0.0	-	2.9

^a Rates are per 100,000 males aged 0-19 and are age-adjusted to the 2000 US Std Population (19 age groups - Census P25-1130).

^b The SEER 9 areas are San Francisco-Oakland SMSA, Connecticut, Detroit, Hawaii, Iowa, New Mexico, Seattle, Utah and Atlanta.

^c The San Francisco-Oakland SMSA represents 15% of all persons in the SEER areas. For this age group, all SEER areas may not be generalizable to the United States for Non-Hodgkin Lymphoma.

- Statistic not shown. Rate based on less than 4 cases for the time interval.

Table 19.13
Non-Hodgkin Lymphoma

Number of Cases

By SEER Location and Year of Diagnosis, 1975-2006

All Races, Males, Ages 20-54

SEER Location	Year of Diagnosis													
	1975- 1979	1980- 1981	1982- 1983	1984- 1985	1986- 1987	1988- 1989	1990- 1991	1992- 1993	1994- 1995	1996- 1997	1998- 1999	2000- 2001	2002- 2003	2004- 2006
SEER 9 ^b	1464	687	723	955	1210	1409	1765	1831	2082	1752	1604	1678	1600	2480
SEER 9 except SF-Oakland	1207	562	588	727	826	919	1193	1294	1477	1309	1266	1311	1292	2055
San Francisco- Oakland SMSA ^c	257	125	135	228	384	490	572	537	605	443	338	367	308	425
San Francisco City/County	58	29	34	105	215	288	333	303	316	223	105	114	110	148

Age-Adjusted Cancer Incidence Rates^a

By SEER Location and Year of Diagnosis, 1975-2006

All Races, Males, Ages 20-54

SEER Location	Year of Diagnosis													
	1975- 1979	1980- 1981	1982- 1983	1984- 1985	1986- 1987	1988- 1989	1990- 1991	1992- 1993	1994- 1995	1996- 1997	1998- 1999	2000- 2001	2002- 2003	2004- 2006
SEER 9 ^b	6.9	7.9	8.2	10.4	12.4	13.5	15.9	15.6	16.9	13.7	12.1	12.2	11.4	11.5
SEER 9 except SF-Oakland	6.9	7.8	8.1	9.7	10.3	10.8	13.1	13.4	14.3	12.2	11.5	11.4	11.0	11.3
San Francisco- Oakland SMSA ^c	7.0	8.5	8.9	13.9	22.6	26.4	29.6	26.7	29.7	21.2	15.5	16.3	13.5	12.5
San Francisco City/County	6.7	8.8	9.4	27.2	56.5	71.5	81.3	72.3	74.2	50.5	23.0	24.8	23.3	21.3

^a Rates are per 100,000 males aged 20-54 and are age-adjusted to the 2000 US Std Population (19 age groups - Census P25-1130).
^b The SEER 9 areas are San Francisco-Oakland SMSA, Connecticut, Detroit, Hawaii, Iowa, New Mexico, Seattle, Utah and Atlanta.
^c The San Francisco-Oakland SMSA represents 15% of all persons in the SEER areas. For this age group, all SEER areas may not be generalizable to the United States for Non-Hodgkin Lymphoma.
 - Statistic not shown. Rate based on less than 4 cases for the time interval.

Table 19.14

Non-Hodgkin Lymphoma

Number of Cases

By SEER Location and Year of Diagnosis, 1975-2006

All Races, Males, Ages 55+

SEER Location	Year of Diagnosis													
	1975- 1979	1980- 1981	1982- 1983	1984- 1985	1986- 1987	1988- 1989	1990- 1991	1992- 1993	1994- 1995	1996- 1997	1998- 1999	2000- 2001	2002- 2003	2004- 2006
SEER 9 ^b	3536	1730	1871	2130	2322	2493	2707	2807	3115	3381	3531	3724	3988	6439
SEER 9 except SF-Oakland	2886	1446	1582	1792	1912	2089	2229	2326	2568	2837	2985	3068	3366	5465
San Francisco- Oakland SMSA ^c	650	284	289	338	410	404	478	481	547	544	546	656	622	974
San Francisco City/County	178	65	88	104	109	105	132	106	130	126	106	141	107	222

Age-Adjusted Cancer Incidence Rates^a

By SEER Location and Year of Diagnosis, 1975-2006

All Races, Males, Ages 55+

SEER Location	Year of Diagnosis													
	1975- 1979	1980- 1981	1982- 1983	1984- 1985	1986- 1987	1988- 1989	1990- 1991	1992- 1993	1994- 1995	1996- 1997	1998- 1999	2000- 2001	2002- 2003	2004- 2006
SEER 9 ^b	45.2	52.2	53.9	59.7	63.3	67.2	70.2	70.6	76.1	80.0	80.7	82.5	84.4	85.8
SEER 9 except SF-Oakland	44.0	52.0	54.3	60.1	62.0	66.6	68.8	69.2	74.3	79.6	80.9	80.6	84.5	86.5
San Francisco- Oakland SMSA ^c	50.9	52.7	52.0	57.5	70.1	70.1	77.3	77.9	85.4	82.0	79.5	92.4	83.7	82.0
San Francisco City/County	48.2	44.6	59.8	72.7	73.9	75.7	93.3	74.7	91.4	87.2	72.7	93.1	68.2	89.4

^a Rates are per 100,000 males aged 55+ and are age-adjusted to the 2000 US Std Population (19 age groups - Census P25-1130).

^b The SEER 9 areas are San Francisco-Oakland SMSA, Connecticut, Detroit, Hawaii, Iowa, New Mexico, Seattle, Utah and Atlanta.

^c The San Francisco-Oakland SMSA represents 15% of all persons in the SEER areas. For this age group, all SEER areas may not be generalizable to the United States for Non-Hodgkin Lymphoma.

- Statistic not shown. Rate based on less than 4 cases for the time interval.

Table 19.16
Non-Hodgkin Lymphoma

SEER Incidence and U.S. Mortality
Age-Adjusted Rates and Trends^a
By Race/Ethnicity and Sex

SEER Incidence	SEER 17 Areas ^b			SEER 13 Areas ^b			SEER 9 Areas ^b		
	Rate 2002-2006			Trend 1997-2006 ^c			Trend 1997-2006 ^d		
	Rate per 100,000 persons			AAPC (%)			AAPC (%)		
RACE/ETHNICITY	Total	Males	Females	Total	Males	Females	Total	Males	Females
All Races	19.5	23.5	16.4	0.3*	-0.2	0.4	0.0	0.1	0.3
White	20.4	24.4	17.2	0.3*	-0.1	0.9*	0.5*	0.1	1.0*
White Hispanic ^e	17.1	19.6	14.9	-0.2	-0.8*	0.7*	-	-	-
White Non-Hispanic ^e	20.9	25.2	17.5	0.5*	0.1	1.0*	-	-	-
Black	14.8	18.3	12.2	0.8*	-0.2	2.1*	0.6	-0.6	2.6*
Asian/Pacific Islander	12.9	15.5	10.9	-0.2	-0.5	0.3	-	-	-
Amer Ind/Alaska Nat ^f	10.8	11.8	10.0	3.2*	-	-	-	-	-
Hispanic ^e	16.7	19.1	14.6	-0.1	-0.7	0.7*	-	-	-
<u>U.S. Mortality^g</u>									
	Rate 2002-2006			Trend 1997-2006 ^h					
	Rate per 100,000 persons			AAPC (%)					
RACE/ETHNICITY	Total	Males	Females	Total	Males	Females			
All Races									
White									
White Hispanic ^e									
White Non-Hispanic ^e									
Black									
Asian/Pacific Islander									
Amer Ind/Alaska Nat									
Total U.S.									
CHSDA Counties									
Non-CHSDA Counties									
Hispanic ^e									

The AAPC is the Average Annual Percent Change over the time interval. The AAPCs are calculated by the Joinpoint Regression Program Version 3.3, April 2008, National Cancer Institute.

Statistic not shown. Rate based on less than 16 cases for the time interval.

Trend based on less than 10 cases for at least one year within the time interval.

Rates are age-adjusted to the 2000 US Std Population (19 age groups - Census P25-1130). Trends

are based on rates age-adjusted to the 2000 US Std Population (19 age groups - Census P25-1130).

The SEER 9 areas are San Francisco, Connecticut, Detroit, Hawaii, Iowa, New Mexico, Seattle, Utah and Atlanta.

The SEER 13 areas comprise the SEER 9 areas plus San Jose-Monterey, Los Angeles, the Alaska Native Registry and Rural Georgia.

The SEER 17 areas comprise the SEER 13 areas plus California excluding SF/SJM/LA, Kentucky, Louisiana and New Jersey.

The 1997-2006 AAPC estimates are based on a Joinpoint analysis with up to 2 Joinpoints over diagnosis years 1992-2006.

The 1997-2006 AAPC estimates are based on a Joinpoint analysis with up to 4 Joinpoints over diagnosis years 1975-2006.

Hispanic and Non-Hispanic are not mutually exclusive from whites, blacks, Asian/Pacific Islanders, and American Indians/Alaska Natives. Incidence data for Hispanics and Non-Hispanics are based on NHIA and exclude cases from the Alaska Native Registry. The 2002-2006 Hispanic and Non-Hispanic death rates exclude deaths from Minnesota, New Hampshire and North Dakota. The 1997-2006 Hispanic and Non-Hispanic mortality trends exclude deaths from Connecticut, Maine, Maryland, Minnesota, New Hampshire, New York, North Dakota, Oklahoma and Vermont.

Incidence data for American Indian/Alaska Native are based on the CHSDA (Contract Health Service Delivery Area) counties.

US Mortality Files, National Center for Health Statistics, CDC.

The 1997-2006 mortality AAPCs are based on a Joinpoint analysis using years of death 1992-2006.

The APC is significantly different from zero (p<.05).

Table 19.17
Non-Hodgkin Lymphoma

Age-Adjusted SEER Incidence Rates^a
By Registry, Race and Sex

	All Races			Whites			Blacks		
	Total	Males	Females	Total	Males	Females	Total	Males	Females
<u>SEER Incidence Rates^a, 2002-2006</u>									
Atlanta & Rural Georgia	17.40	21.81	14.19	18.64	22.65	15.68	14.39	19.81	10.61
Atlanta	17.48	22.04	14.21	18.61	22.74	15.61	14.61	20.31	10.70
Rural Georgia	16.44	19.34	13.56	19.41	22.21	16.49	11.16	-	-
California	18.59	22.41	15.44	19.39	23.40	16.02	14.20	17.16	11.62
Greater Bay Area	19.84	24.20	16.26	21.44	26.23	17.42	16.36	20.06	13.09
San Francisco-Oakland	19.70	24.53	15.78	21.50	26.64	17.16	16.88	20.64	13.79
San Jose-Monterey	20.23	23.70	17.30	21.44	25.60	17.96	13.39	15.71	-
Los Angeles	17.97	21.51	15.08	19.15	22.84	16.08	14.15	17.73	11.30
Greater California	18.43	22.18	15.33	18.87	22.79	15.58	13.04	14.98	11.17
Connecticut	21.35	25.79	18.06	21.73	26.22	18.42	16.76	19.63	14.50
Detroit	21.59	25.08	19.04	22.92	26.51	20.27	16.18	19.40	13.92
Hawaii	15.47	18.99	12.57	19.25	24.01	14.78	-	-	-
Iowa	20.61	24.42	17.59	20.55	24.29	17.60	16.61	23.33	-
Kentucky	19.55	23.09	16.89	19.79	23.21	17.20	13.71	18.87	10.44
Louisiana	19.52	23.18	16.70	21.38	25.06	18.55	13.84	16.95	11.43
New Jersey	21.08	25.58	17.68	21.82	26.31	18.41	15.64	19.21	12.94
New Mexico	15.92	17.94	14.28	16.57	18.75	14.78	13.94	-	-
Seattle-Puget Sound	23.20	28.71	18.82	23.97	29.62	19.43	17.64	19.11	16.35
Utah	19.19	22.40	16.34	19.45	22.75	16.51	-	-	-
9 SEER Areas ^b	20.18	24.34	16.93	21.22	25.46	17.86	15.88	19.62	13.06
11 SEER Areas ^b	19.68	23.68	16.52	20.79	24.93	17.48	15.43	19.13	12.58
13 SEER Areas ^b	19.66	23.64	16.51	20.79	24.92	17.48	15.37	19.06	12.52
17 SEER Areas ^b	19.53	23.46	16.41	20.39	24.43	17.15	14.83	18.25	12.17

^a Rates are per 100,000 and are age-adjusted to the 2000 US Std Population (19 age groups - Census P25-1130)

^b The SEER 9 areas are San Francisco, Connecticut, Detroit, Hawaii, Iowa, New Mexico, Seattle, Utah and Atlanta.

The SEER 11 areas comprise the SEER 9 areas plus San Jose-Monterey and Los Angeles.

The SEER 13 areas comprise the SEER 11 areas plus the Alaska Native Registry and Rural Georgia.

The SEER 17 areas comprise the SEER 13 areas plus California excluding SF/SJM/LA, Kentucky, Louisiana and New Jersey.

- Statistic not shown. Rate based on less than 16 cases for the time interval.

Table 19.22
Non-Hodgkin LymphomaEstimated United States Cancer Prevalence Counts^a on January 1, 2006
By Race/Ethnicity, Sex and Years Since Diagnosis

Years Since Diagnosis		0 to <5	5 to <10	10 to <15	15 to <20	20 to <25	25 to <30	0 to <16 ^e	0 to <31 ^e	>=31 ^g	Complete ^h	
Race	Sex											
All Races ^b	Both Sexes	178,216	105,133	59,771	33,931	19,256	10,268	351,503	407,962	11,571	419,533	
	Males	92,687	54,051	31,316	17,469	9,896	4,966	182,379	211,075	6,068	217,143	
	Females	85,529	51,082	28,455	16,462	9,360	5,302	169,124	196,887	5,503	202,390	
White ^b	Both Sexes	157,198	93,731	53,538	30,738	17,606	9,442	311,965	363,533	11,814	375,347	
	Males	81,948	48,226	28,007	15,917	9,036	4,577	162,065	188,361	6,585	194,946	
	Females	75,250	45,505	25,531	14,821	8,570	4,865	149,900	175,172	5,229	180,401	
Black ^b	Both Sexes	13,856	7,121	3,838	2,144	1,022	584	25,436	28,629	891	29,520	
	Males	7,011	3,626	2,008	1,016	522	249	12,931	14,455	389	14,844	
	Females	6,845	3,495	1,830	1,128	500	335	12,505	14,174	502	14,676	
Asian/ Pacific Islander ^c	Both Sexes	4,455	2,442	1,394	+	+	+	8,471	+	+	+	
	Males	2,324	1,300	678	+	+	+	4,393	+	+	+	
	Females	2,131	1,142	716	+	+	+	4,078	+	+	+	
Hispanic ^d	Both Sexes	10,965	6,225	3,051	+	+	+	20,706	+	+	+	
	Males	5,675	3,329	1,531	+	+	+	10,753	+	+	+	
	Females	5,290	2,896	1,520	+	+	+	9,953	+	+	+	

Estimated prevalence percent^a on January 1, 2006, of the SEER 11 population diagnosed in the previous 16 years
By Age at Prevalence, Race/Ethnicity and Sex

Age at Prevalence	All Ages	Age Specific (Crude)									Age-Adjusted ^f	
		0-9	10-19	20-29	30-39	40-49	50-59	60-69	70-79	80+	All Ages	
Race	Sex											
All Races ^c	Both Sexes	0.1041%	0.0023%	0.0113%	0.0196%	0.0365%	0.0802%	0.1623%	0.3054%	0.4639%	0.4992%	0.1067%
	Males	0.1095%	0.0029%	0.0153%	0.0240%	0.0422%	0.0954%	0.1834%	0.3442%	0.5188%	0.5578%	0.1215%
	Females	0.0988%	0.0016%	0.0071%	0.0150%	0.0307%	0.0651%	0.1421%	0.2704%	0.4215%	0.4667%	0.0938%
White ^c	Both Sexes	0.1154%	0.0025%	0.0116%	0.0203%	0.0379%	0.0846%	0.1726%	0.3285%	0.5057%	0.5300%	0.1141%
	Males	0.1206%	0.0032%	0.0155%	0.0247%	0.0444%	0.0994%	0.1950%	0.3678%	0.5619%	0.5904%	0.1292%
	Females	0.1102%	0.0017%	0.0075%	0.0153%	0.0308%	0.0693%	0.1506%	0.2921%	0.4613%	0.4969%	0.1005%
Black ^c	Both Sexes	0.0627%	0.0019%	0.0092%	0.0202%	0.0361%	0.0751%	0.1381%	0.2211%	0.2588%	0.2355%	0.0758%
	Males	0.0682%	0.0019%	0.0138%	0.0242%	0.0415%	0.0961%	0.1606%	0.2480%	0.2880%	0.2446%	0.0873%
	Females	0.0577%	0.0019%	0.0045%	0.0164%	0.0315%	0.0567%	0.1194%	0.2001%	0.2393%	0.2311%	0.0663%
Asian/ Pacific Islander ^c	Both Sexes	0.0667%	0.0015%	0.0116%	0.0150%	0.0247%	0.0522%	0.1004%	0.1840%	0.2931%	0.3649%	0.0696%
	Males	0.0706%	0.0022%	0.0151%	0.0197%	0.0256%	0.0628%	0.1060%	0.2096%	0.3343%	0.4239%	0.0796%
	Females	0.0630%	-	0.0079%	0.0103%	0.0239%	0.0424%	0.0955%	0.1623%	0.2629%	0.3261%	0.0615%
Hispanic ^d	Both Sexes	0.0469%	0.0021%	0.0089%	0.0132%	0.0267%	0.0570%	0.1181%	0.2170%	0.3611%	0.3425%	0.0782%
	Males	0.0471%	0.0025%	0.0120%	0.0161%	0.0301%	0.0640%	0.1294%	0.2226%	0.3749%	0.3464%	0.0833%
	Females	0.0467%	0.0017%	0.0058%	0.0098%	0.0228%	0.0496%	0.1074%	0.2122%	0.3511%	0.3403%	0.0732%

^a US 2006 cancer prevalence counts are based on 2006 cancer prevalence proportions from the SEER registries and 1/1/2006 US population estimates based on the average of 2005 and 2006 population estimates from the US Bureau of the Census. Prevalence was calculated using the First Malignant Primary Only for a person.

^{b c d} Statistics based on (b) SEER 9 Areas (c) SEER 11 Areas and Rural Georgia (d) NHIA for Hispanic for SEER 11 Areas and Rural Georgia.

^e Maximum limited-duration prevalence: 31 years for 1975-2006 SEER 9 data; 16 years for 1990-2006 SEER 11 data (used to calculate prevalence for Hispanics and Asian Pacific Islanders).

^f Percentages are age-adjusted to the 2000 US Standard Population (19 age groups - Census P25-1130) by 5-year age groups.

^{g h i} (g) Cases diagnosed more than 31 years ago were estimated using the completeness index method (Capocaccia et. al. 1997, Merrill et. al. 2000). (h) Complete prevalence is obtained by summing 0 to <31 and >=31. (i) Age-specific completeness index was approximated using empirical data from historical Connecticut tumor registry.

- Statistic not shown. Statistic based on fewer than 5 cases estimated alive in SEER for the time interval.

+ Not available.

Table 19.23
All Lymphoid Neoplasms With Detailed Non-Hodgkin Lymphoma Subtypes^a
SEER^b Incidence Rates and Annual Percent Change^c by Age at Diagnosis

All Races, Both Sexes, 2001-2006

Site	All Ages			Ages 0-19			Ages 20-64			Ages 65+		
	Rate	Count	APC	Rate	Count	APC	Rate	Count	APC	Rate	Count	APC
Lymphoid Neoplasm	34.5	150,863	-0.6	5.7	7,440	0.5	23.3	64,281	-1.2*	152.1	79,142	-0.3
1 Hodgkin Lymphoma	2.8	12,542	0.6	1.2	1,513	0.9	3.2	8,868	-0.4	4.2	2,161	3.9
2 Non-Hodgkin lymphoma	30.6	133,085	-0.5	4.5	5,886	0.4	19.4	53,591	-1.1*	141.6	73,608	-0.2
2(a) Non-Hodgkin lymphoma, B-cell	27.8	120,799	-0.3	3.1	4,035	3.7	17.3	47,935	-0.9	132.4	68,829	-0.1
2(a) 1. Precursor Non-Hodgkin lymphoma, B-cell	1.1	5,172	4.6*	2.4	3,184	4.8*	0.6	1,536	4.0*	0.9	452	5.0
2(a) 2. Mature Non-Hodgkin lymphoma, B-cell	25.5	110,624	-0.5	0.6	810	-0.6	16.2	44,662	-1.0	125.3	65,152	-0.3
2(a) 2.1. Chronic/Small/Prolymphocytic/ Mantle B-cell Non-Hodgkin lymphoma	6.2	26,704	-1.7	-	-	-	3.1	8,720	-2.5*	34.5	17,973	-1.4
2(a) 2.1.1. Chronic/Small lymphocytic leukemia/lymphoma	5.5	23,459	-2.3*	-	-	-	2.7	7,498	-3.1*	30.6	15,953	-2.0
2(a) 2.1.2. Prolymphocytic leukemia, B-cell	0.0	124	-2.1	-	-	-	0.0	35	-	0.2	86	-
2(a) 2.1.3. Mantle-cell lymphoma	0.7	3,121	2.9*	0.0	0	-	0.4	1,187	1.7	3.7	1,934	3.7
2(a) 2.2. Lymphoplasmacytic lymphoma/ Waldenstrom macroglobulinemia	0.6	2,685	-5.0*	-	-	-	0.3	795	-6.9*	3.6	1,888	-4.4*
2(a) 2.2.1. Lymphoplasmacytic lymphoma	0.3	1,162	-3.5	0.0	0	-	0.1	365	-8.3*	1.5	797	-1.5
2(a) 2.2.2. Waldenstrom macroglobulinemia	0.4	1,523	-6.2*	-	-	-	0.2	430	-5.6	2.1	1,091	-6.4*
2(a) 2.3. Diffuse large B-cell lymphoma (DLBCL)	6.9	29,917	-0.2	0.3	364	0.8	4.7	12,894	-1.2*	32.0	16,659	0.5
2(a) 2.3.1. DLBCL, NOS ^d	6.8	29,719	-0.3	0.3	356	-0.7	4.6	12,741	-1.4*	31.9	16,622	0.5
2(a) 2.3.2. Intravascular large B-cell lymphoma	0.0	25	-	0.0	0	-	-	-	-	0.0	17	-
2(a) 2.3.3. Primary effusion lymphoma	0.0	31	-	0.0	0	-	0.0	23	-	-	-	-
2(a) 2.3.4. Mediastinal large B-cell lymphoma	0.0	142	25.4*	-	-	-	0.0	122	22.0*	-	-	-
2(a) 2.4. Burkitt lymphoma/leukemia	0.4	1,759	-0.9	0.3	360	-2.3	0.4	984	1.8	0.8	415	-5.5*
2(a) 2.5. Marginal-zone lymphoma (MZL)	1.8	7,715	1.5	0.0	31	-	1.2	3,297	0.1	8.5	4,387	2.4*
2(a) 2.5.1. Splenic MZL	0.1	528	3.7	0.0	0	-	0.1	214	-1.1	0.6	314	6.8*
2(a) 2.5.2. Extranodal MZL, MALT ^d type	1.1	4,923	-1.0	0.0	20	-	0.8	2,205	-1.8	5.2	2,698	-0.6
2(a) 2.5.3. Nodal MZL	0.5	2,264	6.7*	-	-	-	0.3	878	5.4*	2.7	1,375	7.4*
2(a) 2.6. Follicular lymphoma	3.7	16,014	1.5	0.0	37	-	3.0	8,248	0.6	14.9	7,729	2.4*
2(a) 2.7. Hairy-cell leukemia	0.3	1,309	-2.9	0.0	0	-	0.3	838	-2.5	0.9	471	-3.5
2(a) 2.8. Plasma cell neoplasms	5.7	24,503	-1.0	-	-	-	3.2	8,879	-0.6	30.1	15,619	-1.2
2(a) 2.8.1. Plasmacytoma	0.4	1,649	0.7	-	-	-	0.3	810	-1.9	1.6	835	3.2
2(a) 2.8.2. Multiple myeloma/ plasma-cell leukemia	5.3	22,854	-1.1	-	-	-	2.9	8,069	-0.4	28.5	14,784	-1.4
2(a) 2.9. Heavy chain disease	0.0	18	-	0.0	0	-	-	-	-	-	-	-
2(a) 3. Non-Hodgkin lymphoma, B-cell, NOS ^d	1.2	5,003	1.5	0.0	41	-	0.6	1,737	-3.5*	6.2	3,225	3.9*

^a Morton LM, Turner JJ, Cerhan JR, Linet MS, Treseler PA, Clarke CA, Jack A, Cozen W, Maynadié M, Spinelli JJ, Costantini AS, Rüdiger T, Scarpa A, Zheng T, Weisenburger DD. Proposed classification of lymphoid neoplasms for epidemiologic research from the Pathology Working Group of the International Lymphoma Epidemiology Consortium (InterLymph). *Blood*. 2007;110:695-708.

^b SEER 17 areas (San Francisco, Connecticut, Detroit, Hawaii, Iowa, New Mexico, Seattle, Utah, Atlanta, San Jose-Monterey, Los Angeles, Alaska Native Registry, Rural Georgia, California excluding SF/SJM/LA, Kentucky, Louisiana and New Jersey).

^c Annual Percent Change calculated over the time range of 2001-2006.

^d NOS = Not otherwise specified. MALT = Mucosa-associated lymphoid tissue. NK = Natural killer.

- Statistic not shown. Rate based on less than 16 cases for the time interval.

Trend based on less than 10 cases for at least one year within the time interval.

Table 19.23 - continued
 All Lymphoid Neoplasms With Detailed Non-Hodgkin Lymphoma Subtypes
 SEER^b Incidence Rates and Annual Percent Change^c by Age at Diagnosis

All Races, Both Sexes, 2001-2006

Site	All Ages			Ages 0-19			Ages 20-64			Ages 65+		
	Rate	Count	APC	Rate	Count	APC	Rate	Count	APC	Rate	Count	APC
2(b) Non-Hodgkin lymphoma, T-cell	2.0	9,008	-1.0	0.7	946	-1.4	1.7	4,674	-1.4	6.5	3,388	-0.3
2(b) 1. Precursor Non-Hodgkin lymphoma, T-cell	0.3	1,208	-0.3	0.5	632	-2.4	0.2	492	2.5	0.2	84	1.0
2(b) 2. Mature Non-Hodgkin lymphoma, T-cell	1.7	7,690	-1.0	0.2	311	0.4	1.5	4,125	-2.0	6.3	3,254	-0.1
2(b) 2.1. Mycosis fungoides/Sezary syndrome	0.5	2,017	-3.3	0.0	42	-	0.4	1,220	-4.0	1.5	755	-2.7
2(b) 2.1.1. Mycosis fungoides	0.4	1,969	-3.2	0.0	42	-	0.4	1,204	-3.7	1.4	723	-3.0
2(b) 2.1.2. Sezary syndrome	0.0	48	-	0.0	0	-	0.0	16	-	0.1	32	-
2(b) 2.2. Peripheral T-cell lymphoma	1.1	4,967	-1.2	0.2	249	-0.4	0.9	2,526	-1.8	4.2	2,192	-0.6
2(b) 2.2.1. Peripheral T-cell lymphoma, NOS ^d	0.4	1,754	-2.1	0.0	43	-	0.3	857	-2.8	1.6	854	-1.2
2(b) 2.2.2. Angioimmunoblastic T-cell lymphoma	0.1	493	14.2*	-	-	-	0.1	200	17.0*	0.6	291	12.7*
2(b) 2.2.3. Subcutaneous panniculitis-like T-cell lymphoma	0.0	58	-	-	-	-	0.0	33	-	0.0	18	-
2(b) 2.2.4. Anaplastic large cell lymphoma, T-cell or null-cell type	0.3	1,202	-5.0*	0.1	159	0.0	0.2	654	-5.5*	0.7	389	-5.9
2(b) 2.2.5. Hepatosplenic T-cell lymphoma	0.0	33	-	-	-	-	0.0	25	-	-	-	-
2(b) 2.2.6. Enteropathy-type T-cell lymphoma	0.0	50	-	0.0	0	-	0.0	28	-	0.0	22	-
2(b) 2.2.7. Cutaneous T-cell lymphoma, NOS ^d	0.2	958	-5.3*	-	-	-	0.2	505	-6.3	0.8	441	-4.2
2(b) 2.2.8. Primary cutaneous anaplastic large cell lymphoma	0.1	419	1.9	0.0	20	-	0.1	224	4.6	0.3	175	-0.7
2(b) 2.3. Adult T-cell leukemia/lymphoma	0.0	177	-0.1	-	-	-	0.0	79	-3.6	0.2	92	2.5
2(b) 2.4. NK ^d /T-cell lymphoma, nasal-type/aggressive NK ^d -cell leukemia	0.1	306	7.2	-	-	-	0.1	211	7.6	0.2	81	-
2(b) 2.5. T-cell large granular lymphocytic leukemia	0.0	99	-	0.0	0	-	0.0	37	-	0.1	62	-
2(b) 2.6. Prolymphocytic leukemia, T-cell	0.0	124	6.3	0.0	0	-	0.0	52	-	0.1	72	-
2(b) 3. Non-Hodgkin lymphoma, NOS ^d , T-cell	0.0	110	-6.2	-	-	-	0.0	57	-	0.1	50	-
2(c) Non-Hodgkin lymphoma, unknown lineage	0.7	3,278	-9.2*	0.7	905	-11.3*	0.4	982	-10.1*	2.7	1,391	-7.5*
2(c) 1. Precursor lymphoblastic leukemia/lymphoma, unknown lineage	0.3	1,518	-11.3*	0.7	892	-11.4*	0.1	366	-12.9*	0.5	260	-8.9*
2(c) 2. Prolymphocytic leukemia, unknown lineage	0.0	64	-	-	-	-	0.0	18	-	0.1	44	-
2(c) 3. Non-Hodgkin lymphoma, NOS ^d , unknown lineage	0.4	1,696	-7.1*	-	-	-	0.2	598	-7.9*	2.1	1,087	-6.6*
2(*) 1. Total precursor lymphoma/leukemia	1.7	7,898	0.6	3.6	4,708	0.6	0.9	2,394	0.8	1.5	796	-0.1
3 Composite Hodgkin lymphoma and Non-Hodgkin lymphoma	0.0	61	-	0.0	0	-	0.0	26	-	0.1	35	-
4 Lymphoid neoplasm, NOS ^d	1.2	5,175	-6.0*	0.0	41	-	0.7	1,796	-8.2*	6.3	3,338	-4.9

^a Morton LM, Turner JJ, Cerhan JR, Linet MS, Treseler PA, Clarke CA, Jack A, Cozen W, Maynadié M, Spinelli JJ, Costantini AS, Rüdiger T, Scarpa A, Zheng T, Weisenburger DD. Proposed classification of lymphoid neoplasms for epidemiologic research from the Pathology Working Group of the International Lymphoma Epidemiology Consortium (InterLymph). Blood. 2007;110:695-708.

^b SEER 17 areas (San Francisco, Connecticut, Detroit, Hawaii, Iowa, New Mexico, Seattle, Utah, Atlanta, San Jose-Monterey, Los Angeles, Alaska Native Registry, Rural Georgia, California excluding SF/SJM/LA, Kentucky, Louisiana and New Jersey).

^c Annual Percent Change calculated over the time range of 2001-2006.

^d NOS = Not otherwise specified. MALT = Mucosa-associated lymphoid tissue. NK = Natural killer.

- Statistic not shown. Rate based on less than 16 cases for the time interval.

Trend based on less than 10 cases for at least one year within the time interval.

Table 19.24
All Lymphoid Neoplasms With Detailed Non-Hodgkin Lymphoma Subtypes^a
SEER^b Incidence Rates and Annual Percent Change^c by Age at Diagnosis

All Races, Males, 2001-2006

Site	All Ages			Ages 0-19			Ages 20-64			Ages 65+		
	Rate	Count	APC	Rate	Count	APC	Rate	Count	APC	Rate	Count	APC
Lymphoid Neoplasm	42.5	82,807	-0.8	6.5	4,378	1.2	27.8	37,600	-1.5*	192.2	40,829	-0.4
1 Hodgkin Lymphoma	3.1	6,833	0.5	1.2	826	2.0	3.6	4,894	-1.0	5.1	1,113	4.5
2 Non-Hodgkin lymphoma	37.9	73,233	-0.7	5.3	3,524	1.1	23.4	31,594	-1.4*	179.3	38,115	-0.4
2(a) Non-Hodgkin lymphoma, B-cell	34.4	66,053	-0.4	3.5	2,348	4.2	20.8	28,182	-1.1	167.1	35,523	-0.1
2(a) 1. Precursor Non-Hodgkin lymphoma, B-cell	1.2	2,844	5.3*	2.7	1,780	5.9	0.6	862	3.6	0.9	202	7.2
2(a) 2. Mature Non-Hodgkin lymphoma, B-cell	31.7	60,620	-0.7	0.8	542	-1.1	19.5	26,325	-1.2	158.7	33,753	-0.4
2(a) 2.1. Chronic/Small/Prolymphocytic/ Mantle B-cell Non-Hodgkin lymphoma	8.7	16,076	-2.0*	-	-	-	4.2	5,714	-3.2*	48.8	10,357	-1.6
2(a) 2.1.1. Chronic/Small lymphocytic leukemia/lymphoma	7.5	13,825	-2.8*	-	-	-	3.6	4,815	-3.9*	42.5	9,006	-2.4
2(a) 2.1.2. Prolymphocytic leukemia, B-cell	0.0	74	-	-	-	-	0.0	21	-	0.2	52	-
2(a) 2.1.3. Mantle-cell lymphoma	1.1	2,177	3.3	0.0	0	-	0.6	878	1.4	6.1	1,299	4.4
2(a) 2.2. Lymphoplasmacytic lymphoma/ Waldenstrom macroglobulinemia	0.9	1,558	-6.5*	-	-	-	0.3	466	-8.9*	5.2	1,091	-5.8*
2(a) 2.2.1. Lymphoplasmacytic lymphoma	0.3	637	-4.4	0.0	0	-	0.2	213	-10.7*	2.0	424	-2.1
2(a) 2.2.2. Waldenstrom macroglobulinemia	0.5	921	-8.0*	-	-	-	0.2	253	-7.1	3.2	667	-8.1*
2(a) 2.3. Diffuse large B-cell lymphoma (DLBCL)	8.3	15,999	-0.4	0.3	210	-0.2	5.7	7,744	-1.8*	38.0	8,045	0.6
2(a) 2.3.1. DLBCL, NOS ^d	8.2	15,894	-0.5	0.3	208	-0.8	5.7	7,662	-2.0*	37.9	8,024	0.6
2(a) 2.3.2. Intravascular large B-cell lymphoma	-	-	-	0.0	0	-	-	-	-	-	-	-
2(a) 2.3.3. Primary effusion lymphoma	0.0	26	-	0.0	0	-	0.0	20	-	-	-	-
2(a) 2.3.4. Mediastinal large B-cell lymphoma	0.0	65	-	-	-	-	0.0	57	-	-	-	-
2(a) 2.4. Burkitt lymphoma/leukemia	0.6	1,289	0.5	0.4	281	-2.0	0.6	771	2.9	1.1	237	-3.0
2(a) 2.5. Marginal-zone lymphoma (MZL)	1.8	3,484	2.5	-	-	-	1.1	1,549	1.8	9.0	1,920	2.9
2(a) 2.5.1. Splenic MZL	0.1	252	4.4	0.0	0	-	0.1	110	2.8	0.7	142	5.6
2(a) 2.5.2. Extranodal MZL, MALT ^d type	1.1	2,186	-0.5	-	-	-	0.7	988	-1.2	5.6	1,190	0.0
2(a) 2.5.3. Nodal MZL	0.5	1,046	8.7*	-	-	-	0.3	451	8.7*	2.8	588	8.4*
2(a) 2.6. Follicular lymphoma	4.0	7,910	1.9	0.0	26	-	3.2	4,348	0.7	16.4	3,536	3.1*
2(a) 2.7. Hairy-cell leukemia	0.5	1,019	-2.0	0.0	0	-	0.5	667	-2.5	1.6	352	-1.3
2(a) 2.8. Plasma cell neoplasms	7.1	13,274	-0.8	-	-	-	3.7	5,064	-0.2	38.5	8,206	-1.1
2(a) 2.8.1. Plasmacytoma	0.5	1,017	0.0	-	-	-	0.4	529	-2.4	2.3	484	2.1
2(a) 2.8.2. Multiple myeloma/ plasma-cell leukemia	6.6	12,257	-0.9	0.0	0	-	3.4	4,535	0.0	36.3	7,722	-1.3
2(a) 2.9. Heavy chain disease	-	-	-	0.0	0	-	-	-	-	-	-	-
2(a) 3. Non-Hodgkin lymphoma, B-cell, NOS ^d	1.4	2,589	1.8	0.0	26	-	0.7	995	-3.9	7.5	1,568	4.5

^a Morton LM, Turner JJ, Cerhan JR, Linet MS, Treseler PA, Clarke CA, Jack A, Cozen W, Maynadié M, Spinelli JJ, Costantini AS, Rüdiger T, Scarpa A, Zheng T, Weisenburger DD. Proposed classification of lymphoid neoplasms for epidemiologic research from the Pathology Working Group of the International Lymphoma Epidemiology Consortium (InterLymph). *Blood*. 2007;110:695-708.

^b SEER 17 areas (San Francisco, Connecticut, Detroit, Hawaii, Iowa, New Mexico, Seattle, Utah, Atlanta, San Jose-Monterey, Los Angeles, Alaska Native Registry, Rural Georgia, California excluding SF/SJM/LA, Kentucky, Louisiana and New Jersey).

^c Annual Percent Change calculated over the time range of 2001-2006.

^d NOS = Not otherwise specified. MALT = Mucosa-associated lymphoid tissue. NK = Natural killer.

- Statistic not shown. Rate based on less than 16 cases for the time interval.

Trend based on less than 10 cases for at least one year within the time interval.

Table 19.24 - continued
 All Lymphoid Neoplasms With Detailed Non-Hodgkin Lymphoma Subtypes
 SEER^b Incidence Rates and Annual Percent Change^c by Age at Diagnosis

All Races, Males, 2001-2006

Site	All Ages			Ages 0-19			Ages 20-64			Ages 65+		
	Rate	Count	APC	Rate	Count	APC	Rate	Count	APC	Rate	Count	APC
2(b) Non-Hodgkin lymphoma, T-cell	2.6	5,382	-2.2	1.0	649	0.2	2.1	2,802	-2.6	9.0	1,931	-2.4
2(b) 1. Precursor Non-Hodgkin lymphoma, T-cell	0.4	833	-0.8	0.7	460	-0.6	0.2	334	-0.6	0.2	39	-
2(b) 2. Mature Non-Hodgkin lymphoma, T-cell	2.2	4,487	-2.3	0.3	186	1.7	1.8	2,436	-2.8	8.7	1,865	-2.1
2(b) 2.1. Mycosis fungoides/Sezary syndrome	0.6	1,150	-4.6	-	-	-	0.5	646	-4.2	2.3	489	-5.2*
2(b) 2.1.1. Mycosis fungoides	0.6	1,123	-4.5	-	-	-	0.5	638	-3.9	2.2	470	-5.3*
2(b) 2.1.2. Sezary syndrome	0.0	27	-	0.0	0	-	-	-	-	0.1	19	-
2(b) 2.2. Peripheral T-cell lymphoma	1.5	2,932	-2.4*	0.2	156	2.1	1.2	1,557	-3.1	5.7	1,219	-2.2*
2(b) 2.2.1. Peripheral T-cell lymphoma, NOS ^d	0.5	1,045	-2.6	0.0	28	-	0.4	542	-3.9	2.2	475	-1.4
2(b) 2.2.2. Angioimmunoblastic T-cell lymphoma	0.1	257	10.6	-	-	-	0.1	111	13.4*	0.7	145	8.9
2(b) 2.2.3. Subcutaneous panniculitis-like T-cell lymphoma	0.0	17	-	0.0	0	-	-	-	-	-	-	-
2(b) 2.2.4. Anaplastic large cell lymphoma, T-cell or null-cell type	0.4	762	-7.0*	0.2	104	3.9	0.3	437	-6.6*	1.0	221	-11.1*
2(b) 2.2.5. Hepatosplenic T-cell lymphoma	0.0	22	-	-	-	-	-	-	-	-	-	-
2(b) 2.2.6. Enteropathy-type T-cell lymphoma	0.0	32	-	0.0	0	-	0.0	16	-	0.1	16	-
2(b) 2.2.7. Cutaneous T-cell lymphoma, NOS ^d	0.3	559	-5.5	-	-	-	0.2	311	-6.0	1.1	242	-5.0
2(b) 2.2.8. Primary cutaneous anaplastic large cell lymphoma	0.1	238	1.9	-	-	-	0.1	117	6.5*	0.5	110	-2.1
2(b) 2.3. Adult T-cell leukemia/lymphoma	0.0	90	-2.7	-	-	-	0.0	45	-	0.2	40	-
2(b) 2.4. NK ^d /T-cell lymphoma, nasal-type/aggressive NK ^d -cell leukemia	0.1	196	7.1*	-	-	-	0.1	139	5.3	0.2	47	-
2(b) 2.5. T-cell large granular lymphocytic leukemia	0.0	52	-	0.0	0	-	0.0	18	-	0.2	34	-
2(b) 2.6. Prolymphocytic leukemia, T-cell	0.0	67	-	0.0	0	-	0.0	31	-	0.2	36	-
2(b) 3. Non-Hodgkin lymphoma, NOS ^d , T-cell	0.0	62	-	-	-	-	0.0	32	-	0.1	27	-
2(c) Non-Hodgkin lymphoma, unknown lineage	0.9	1,798	-8.6*	0.8	527	-10.6*	0.5	610	-9.0*	3.2	661	-7.3*
2(c) 1. Precursor lymphoblastic leukemia/lymphoma, unknown lineage	0.4	857	-10.2*	0.8	517	-10.5*	0.2	212	-11.6*	0.6	128	-7.6
2(c) 2. Prolymphocytic leukemia, unknown lineage	0.0	41	-	-	-	-	-	-	-	0.1	28	-
2(c) 3. Non-Hodgkin lymphoma, NOS ^d , unknown lineage	0.5	900	-7.2*	-	-	-	0.3	386	-7.2	2.4	505	-7.0*
2(*) 1. Total precursor lymphoma/leukemia	2.0	4,534	1.0	4.1	2,757	1.5	1.0	1,408	0.2	1.7	369	0.4
3 Composite Hodgkin lymphoma and Non-Hodgkin lymphoma	0.0	26	-	0.0	0	-	-	-	-	-	-	-
4 Lymphoid neoplasm, NOS ^d	1.5	2,715	-5.9*	0.0	28	-	0.8	1,099	-7.1*	7.7	1,588	-5.2*

^a Morton LM, Turner JJ, Cerhan JR, Linet MS, Treseler PA, Clarke CA, Jack A, Cozen W, Maynadié M, Spinelli JJ, Costantini AS, Rüdiger T, Scarpa A, Zheng T, Weisenburger DD. Proposed classification of lymphoid neoplasms for epidemiologic research from the Pathology Working Group of the International Lymphoma Epidemiology Consortium (InterLymph). *Blood*. 2007;110:695-708.

^b SEER 17 areas (San Francisco, Connecticut, Detroit, Hawaii, Iowa, New Mexico, Seattle, Utah, Atlanta, San Jose-Monterey, Los Angeles, Alaska Native Registry, Rural Georgia, California excluding SF/SJM/LA, Kentucky, Louisiana and New Jersey).

^c Annual Percent Change calculated over the time range of 2001-2006.

^d NOS = Not otherwise specified. MALT = Mucosa-associated lymphoid tissue. NK = Natural killer.

- Statistic not shown. Rate based on less than 16 cases for the time interval.

Trend based on less than 10 cases for at least one year within the time interval.

Table 19.25
All Lymphoid Neoplasms With Detailed Non-Hodgkin Lymphoma Subtypes^a
SEER^b Incidence Rates and Annual Percent Change^c by Age at Diagnosis

All Races, Females, 2001-2006

Site	All Ages			Ages 0-19			Ages 20-64			Ages 65+		
	Rate	Count	APC	Rate	Count	APC	Rate	Count	APC	Rate	Count	APC
Lymphoid Neoplasm	28.3	68,056	-0.5	4.8	3,062	-0.6	19.0	26,681	-0.8	124.7	38,313	-0.3
1 Hodgkin Lymphoma	2.5	5,709	0.8	1.1	687	-0.6	2.9	3,974	0.4	3.5	1,048	3.3
2 Non-Hodgkin lymphoma	24.8	59,852	-0.4	3.7	2,362	-0.5	15.6	21,997	-0.7	115.7	35,493	-0.2
2(a) Non-Hodgkin lymphoma, B-cell	22.7	54,746	-0.2	2.6	1,687	3.1	14.0	19,753	-0.6	108.6	33,306	-0.1
2(a) 1. Precursor Non-Hodgkin lymphoma, B-cell	1.0	2,328	3.7*	2.2	1,404	3.4*	0.5	674	4.1	0.8	250	4.0
2(a) 2. Mature Non-Hodgkin lymphoma, B-cell	20.7	50,004	-0.4	0.4	268	0.3	13.0	18,337	-0.6	102.4	31,399	-0.3
2(a) 2.1. Chronic/Small/Prolymphocytic/ Mantle B-cell Non-Hodgkin lymphoma	4.3	10,628	-1.4	-	-	-	2.1	3,006	-1.2	24.6	7,616	-1.5
2(a) 2.1.1. Chronic/Small lymphocytic leukemia/lymphoma	3.9	9,634	-1.8	-	-	-	1.9	2,683	-1.8	22.4	6,947	-1.8
2(a) 2.1.2. Prolymphocytic leukemia, B-cell	0.0	50	-	-	-	-	-	-	-	0.1	34	-
2(a) 2.1.3. Mantle-cell lymphoma	0.4	944	2.2	0.0	0	-	0.2	309	2.3	2.1	635	2.2
2(a) 2.2. Lymphoplasmacytic lymphoma/ Waldenstrom macroglobulinemia	0.5	1,127	-2.8*	-	-	-	0.2	329	-4.0	2.6	797	-2.5*
2(a) 2.2.1. Lymphoplasmacytic lymphoma	0.2	525	-2.1	0.0	0	-	0.1	152	-4.7	1.2	373	-1.1
2(a) 2.2.2. Waldenstrom macroglobulinemia	0.2	602	-3.4	-	-	-	0.1	177	-3.6	1.4	424	-3.6
2(a) 2.3. Diffuse large B-cell lymphoma (DLBCL)	5.8	13,918	0.2	0.2	154	1.6	3.7	5,150	-0.2	28.0	8,614	0.5
2(a) 2.3.1. DLBCL, NOS ^d	5.7	13,825	0.1	0.2	148	-0.9	3.6	5,079	-0.5*	27.9	8,598	0.5
2(a) 2.3.2. Intravascular large B-cell lymphoma	-	-	-	0.0	0	-	-	-	-	-	-	-
2(a) 2.3.3. Primary effusion lymphoma	-	-	-	0.0	0	-	-	-	-	-	-	-
2(a) 2.3.4. Mediastinal large B-cell lymphoma	0.0	77	-	-	-	-	0.0	65	-	-	-	-
2(a) 2.4. Burkitt lymphoma/leukemia	0.2	470	-4.3	0.1	79	-	0.2	213	-2.6	0.6	178	-6.9
2(a) 2.5. Marginal-zone lymphoma (MZL)	1.8	4,231	0.6	0.0	16	-	1.2	1,748	-1.3	8.1	2,467	1.7
2(a) 2.5.1. Splenic MZL	0.1	276	2.0	0.0	0	-	0.1	104	-4.6	0.6	172	6.1
2(a) 2.5.2. Extranodal MZL, MALT ^d type	1.1	2,737	-1.4	-	-	-	0.9	1,217	-2.2	5.0	1,508	-1.2
2(a) 2.5.3. Nodal MZL	0.5	1,218	4.8*	-	-	-	0.3	427	2.0	2.6	787	6.4*
2(a) 2.6. Follicular lymphoma	3.4	8,104	1.2	-	-	-	2.8	3,900	0.5	14.0	4,193	1.9
2(a) 2.7. Hairy-cell leukemia	0.1	290	-5.9	0.0	0	-	0.1	171	-2.6	0.4	119	-
2(a) 2.8. Plasma cell neoplasms	4.6	11,229	-1.3	-	-	-	2.7	3,815	-1.1	24.2	7,413	-1.5
2(a) 2.8.1. Plasmacytoma	0.3	632	1.4	0.0	0	-	0.2	281	-1.2	1.2	351	3.7
2(a) 2.8.2. Multiple myeloma/ plasma-cell leukemia	4.4	10,597	-1.5	-	-	-	2.5	3,534	-1.1	23.0	7,062	-1.7*
2(a) 2.9. Heavy chain disease	-	-	-	0.0	0	-	-	-	-	-	-	-
2(a) 3. Non-Hodgkin lymphoma, B-cell, NOS ^d	1.0	2,414	1.3	-	-	-	0.5	742	-3.0	5.4	1,657	3.2

^a Morton LM, Turner JJ, Cerhan JR, Linet MS, Treseler PA, Clarke CA, Jack A, Cozen W, Maynadié M, Spinelli JJ, Costantini AS, Rüdiger T, Scarpa A, Zheng T, Weisenburger DD. Proposed classification of lymphoid neoplasms for epidemiologic research from the Pathology Working Group of the International Lymphoma Epidemiology Consortium (InterLymph). *Blood*. 2007;110:695-708.

^b SEER 17 areas (San Francisco, Connecticut, Detroit, Hawaii, Iowa, New Mexico, Seattle, Utah, Atlanta, San Jose-Monterey, Los Angeles, Alaska Native Registry, Rural Georgia, California excluding SF/SJM/LA, Kentucky, Louisiana and New Jersey).

^c Annual Percent Change calculated over the time range of 2001-2006.

^d NOS = Not otherwise specified. MALT = Mucosa-associated lymphoid tissue. NK = Natural killer.

- Statistic not shown. Rate based on less than 16 cases for the time interval.

Trend based on less than 10 cases for at least one year within the time interval.

Table 19.25 - continued
 All Lymphoid Neoplasms With Detailed Non-Hodgkin Lymphoma Subtypes
 SEER^b Incidence Rates and Annual Percent Change^c by Age at Diagnosis

All Races, Females, 2001-2006

Site	All Ages			Ages 0-19			Ages 20-64			Ages 65+		
	Rate	Count	APC	Rate	Count	APC	Rate	Count	APC	Rate	Count	APC
2(b) Non-Hodgkin lymphoma, T-cell	1.5	3,626	0.5	0.5	297	-4.9	1.3	1,872	0.2	4.8	1,457	2.3
2(b) 1. Precursor Non-Hodgkin lymphoma, T-cell	0.2	375	0.5	0.3	172	-6.8	0.1	158	9.1	0.2	45	-
2(b) 2. Mature Non-Hodgkin lymphoma, T-cell	1.3	3,203	0.6	0.2	125	-2.0	1.2	1,689	-0.7	4.6	1,389	2.5
2(b) 2.1. Mycosis fungoides/Sezary syndrome	0.4	867	-1.5	0.0	27	-	0.4	574	-3.7*	0.9	266	2.4
2(b) 2.1.1. Mycosis fungoides	0.4	846	-1.5	0.0	27	-	0.4	566	-3.5	0.8	253	1.8
2(b) 2.1.2. Sezary syndrome	0.0	21	-	0.0	0	-	-	-	-	-	-	-
2(b) 2.2. Peripheral T-cell lymphoma	0.9	2,035	0.3	0.1	93	-4.2	0.7	969	0.2	3.2	973	0.9
2(b) 2.2.1. Peripheral T-cell lymphoma, NOS ^d	0.3	709	-1.3	-	-	-	0.2	315	-1.0	1.2	379	-1.0
2(b) 2.2.2. Angioimmunoblastic T-cell lymphoma	0.1	236	17.7*	-	-	-	0.1	89	-	0.5	146	16.1*
2(b) 2.2.3. Subcutaneous panniculitis-like T-cell lymphoma	0.0	41	-	-	-	-	0.0	24	-	-	-	-
2(b) 2.2.4. Anaplastic large cell lymphoma, T-cell or null-cell type	0.2	440	-2.4	0.1	55	-	0.2	217	-3.3	0.5	168	0.2
2(b) 2.2.5. Hepatosplenic T-cell lymphoma	-	-	-	0.0	0	-	-	-	-	0.0	0	-
2(b) 2.2.6. Enteropathy-type T-cell lymphoma	0.0	18	-	0.0	0	-	-	-	-	-	-	-
2(b) 2.2.7. Cutaneous T-cell lymphoma, NOS ^d	0.2	399	-5.4	-	-	-	0.1	194	-5.9	0.7	199	-5.0
2(b) 2.2.8. Primary cutaneous anaplastic large cell lymphoma	0.1	181	1.8	-	-	-	0.1	107	2.2	0.2	65	-
2(b) 2.3. Adult T-cell leukemia/lymphoma	0.0	87	3.2	-	-	-	0.0	34	-	0.2	52	-
2(b) 2.4. NK ^d /T-cell lymphoma, nasal-type/aggressive NK ^d -cell leukemia	0.0	110	7.6	-	-	-	0.1	72	-	0.1	34	-
2(b) 2.5. T-cell large granular lymphocytic leukemia	0.0	47	-	0.0	0	-	0.0	19	-	0.1	28	-
2(b) 2.6. Prolymphocytic leukemia, T-cell	0.0	57	-	0.0	0	-	0.0	21	-	0.1	36	-
2(b) 3. Non-Hodgkin lymphoma, NOS ^d , T-cell	0.0	48	-	0.0	0	-	0.0	25	-	0.1	23	-
2(c) Non-Hodgkin lymphoma, unknown lineage	0.6	1,480	-10.1*	0.6	378	-12.4	0.3	372	-11.7*	2.3	730	-8.0*
2(c) 1. Precursor lymphoblastic leukemia/lymphoma, unknown lineage	0.3	661	-12.7*	0.6	375	-12.7	0.1	154	-14.2*	0.4	132	-10.6
2(c) 2. Prolymphocytic leukemia, unknown lineage	0.0	23	-	-	-	-	-	-	-	0.0	16	-
2(c) 3. Non-Hodgkin lymphoma, NOS ^d , unknown lineage	0.3	796	-7.3*	-	-	-	0.2	212	-8.9*	1.9	582	-6.8*
2(*) 1. Total precursor lymphoma/leukemia	1.5	3,364	0.0	3.1	1,951	-0.7	0.7	986	1.5	1.4	427	-0.5
3 Composite Hodgkin lymphoma and Non-Hodgkin lymphoma	0.0	35	-	0.0	0	-	-	-	-	0.1	22	-
4 Lymphoid neoplasm, NOS ^d	1.0	2,460	-6.3*	-	-	-	0.5	697	-9.9*	5.4	1,750	-4.7

^a Morton LM, Turner JJ, Cerhan JR, Linet MS, Treseler PA, Clarke CA, Jack A, Cozen W, Maynadié M, Spinelli JJ, Costantini AS, Rüdiger T, Scarpa A, Zheng T, Weisenburger DD. Proposed classification of lymphoid neoplasms for epidemiologic research from the Pathology Working Group of the International Lymphoma Epidemiology Consortium (InterLymph). Blood. 2007;110:695-708.

^b SEER 17 areas (San Francisco, Connecticut, Detroit, Hawaii, Iowa, New Mexico, Seattle, Utah, Atlanta, San Jose-Monterey, Los Angeles, Alaska Native Registry, Rural Georgia, California excluding SF/SJM/LA, Kentucky, Louisiana and New Jersey).

^c Annual Percent Change calculated over the time range of 2001-2006.

^d NOS = Not otherwise specified. MALT = Mucosa-associated lymphoid tissue. NK = Natural killer.

- Statistic not shown. Rate based on less than 16 cases for the time interval.

Trend based on less than 10 cases for at least one year within the time interval.

Table 19.26
All Lymphoid Neoplasms With Detailed Non-Hodgkin Lymphoma Subtypes

SEER^b 2-Year Relative^c Survival Rates by Age at Diagnosis

All Races, Both Sexes, 2001-2005

Site	Count	All Ages		Ages 0-19		Ages 20-64		Ages 65+	
		Rate (95% C.I.)	Rate (95% C.I.)	Rate (95% C.I.)	Rate (95% C.I.)	Rate (95% C.I.)	Rate (95% C.I.)		
Lymphoid Neoplasm	104,990	75.7 (75.4 , 76.0)	91.4 (90.6 , 92.1)	81.7 (81.4 , 82.1)	67.0 (66.5 , 67.5)				
1 Hodgkin Lymphoma	9,619	89.3 (88.6 , 90.0)	97.4 (96.2 , 98.2)	93.1 (92.5 , 93.7)	59.2 (56.1 , 62.1)				
2 Non-Hodgkin lymphoma	91,989	74.8 (74.5 , 75.2)	89.9 (89.0 , 90.7)	80.3 (79.9 , 80.7)	67.9 (67.4 , 68.4)				
2(a) Non-Hodgkin lymphoma, B-cell	83,147	75.5 (75.2 , 75.8)	91.8 (90.8 , 92.8)	81.5 (81.1 , 81.9)	68.7 (68.2 , 69.2)				
2(a) 1. Precursor Non-Hodgkin lymphoma, B-cell	4,031	75.4 (73.9 , 76.7)	93.1 (92.0 , 94.0)	47.9 (44.8 , 50.9)	19.6 (14.9 , 24.9)				
2(a) 2. Mature Non-Hodgkin lymphoma, B-cell	75,780	75.7 (75.3 , 76.0)	87.2 (84.3 , 89.6)	82.7 (82.3 , 83.2)	69.2 (68.6 , 69.7)				
2(a) 2.1. Chronic/Small/Prolymphocytic/ Mantle B-cell Non-Hodgkin lymphoma	17,676	86.3 (85.7 , 87.0)	- (- , -)	92.4 (91.6 , 93.1)	82.5 (81.6 , 83.5)				
2(a) 2.1.1. Chronic/Small lymphocytic leukemia/lymphoma	15,614	88.3 (87.6 , 89.0)	- (- , -)	94.1 (93.3 , 94.8)	84.8 (83.8 , 85.8)				
2(a) 2.1.2. Prolymphocytic leukemia, B-cell	86	56.9 (44.3 , 67.7)	- (- , -)	67.7 (45.8 , 82.3)	48.8 (33.2 , 62.7)				
2(a) 2.1.3. Mantle-cell lymphoma	1,976	72.1 (69.7 , 74.3)	- (- , -)	81.8 (78.7 , 84.4)	64.5 (61.1 , 67.6)				
2(a) 2.2. Lymphoplasmacytic lymphoma/ Waldenstrom macroglobulinemia	1,762	84.9 (82.6 , 86.9)	- (- , -)	89.2 (86.2 , 91.7)	82.4 (79.2 , 85.1)				
2(a) 2.2.1. Lymphoplasmacytic lymphoma	752	84.1 (80.5 , 87.1)	- (- , -)	85.4 (80.2 , 89.3)	83.2 (78.1 , 87.2)				
2(a) 2.2.2. Waldenstrom macroglobulinemia	1,010	85.5 (82.4 , 88.1)	- (- , -)	92.4 (88.5 , 95.1)	81.8 (77.6 , 85.3)				
2(a) 2.3. Diffuse large B-cell lymphoma (DLBCL)	20,841	65.3 (64.6 , 66.0)	86.3 (81.7 , 89.9)	73.7 (72.8 , 74.6)	56.2 (55.1 , 57.2)				
2(a) 2.3.1. DLBCL, NOS ^d	20,710	65.3 (64.5 , 66.0)	86.5 (81.9 , 90.1)	73.7 (72.7 , 74.6)	56.2 (55.1 , 57.3)				
2(a) 2.3.2. Intravascular large B-cell lymphoma	-	- (- , -)	- (- , -)	- (- , -)	- (- , -)				
2(a) 2.3.3. Primary effusion lymphoma	-	- (- , -)	- (- , -)	- (- , -)	- (- , -)				
2(a) 2.3.4. Mediastinal large B-cell lymphoma	94	90.3 (81.6 , 95.0)	- (- , -)	95.1 (86.8 , 98.3)	- (- , -)				
2(a) 2.4. Burkitt lymphoma/leukemia	1,332	56.5 (53.7 , 59.2)	86.3 (81.7 , 89.8)	52.2 (48.5 , 55.7)	33.5 (27.4 , 39.6)				
2(a) 2.5. Marginal-zone lymphoma (MZL)	5,098	93.1 (92.1 , 94.1)	- (- , -)	96.6 (95.6 , 97.4)	89.7 (87.8 , 91.3)				
2(a) 2.5.1. Splenic MZL	339	88.4 (83.1 , 92.1)	- (- , -)	94.5 (88.4 , 97.4)	82.5 (73.7 , 88.6)				
2(a) 2.5.2. Extranodal MZL, MALT ^d type	3,325	95.6 (94.4 , 96.6)	- (- , -)	97.2 (96.0 , 98.0)	93.9 (91.6 , 95.6)				
2(a) 2.5.3. Nodal MZL	1,434	88.4 (86.1 , 90.4)	- (- , -)	95.5 (93.1 , 97.0)	82.4 (78.6 , 85.6)				
2(a) 2.6. Follicular lymphoma	11,199	90.6 (89.8 , 91.2)	96.8 (79.0 , 99.6)	94.2 (93.5 , 94.8)	85.6 (84.2 , 86.8)				
2(a) 2.7. Hairy-cell leukemia	963	96.7 (94.4 , 98.1)	- (- , -)	97.9 (96.0 , 98.9)	93.6 (86.6 , 97.0)				
2(a) 2.8. Plasma cell neoplasms	16,896	61.4 (60.6 , 62.3)	- (- , -)	72.6 (71.5 , 73.7)	53.3 (52.1 , 54.4)				
2(a) 2.8.1. Plasmacytoma	1,146	80.3 (77.4 , 82.8)	- (- , -)	87.4 (84.3 , 90.0)	70.9 (65.8 , 75.3)				
2(a) 2.8.2. Multiple myeloma/ plasma-cell leukemia	15,750	60.1 (59.2 , 60.9)	- (- , -)	71.1 (69.9 , 72.3)	52.3 (51.2 , 53.5)				
2(a) 2.9. Heavy chain disease	-	- (- , -)	- (- , -)	- (- , -)	- (- , -)				
2(a) 3. Non-Hodgkin lymphoma, B-cell, NOS ^d	3,336	71.9 (70.1 , 73.7)	87.8 (70.5 , 95.3)	79.1 (76.7 , 81.3)	66.3 (63.7 , 68.7)				

^a Morton LM, Turner JJ, Cerhan JR, Linet MS, Treseler PA, Clarke CA, Jack A, Cozen W, Maynadié M, Spinelli JJ, Costantini AS, Rüdiger T, Scarpa A, Zheng T, Weisenburger DD. Proposed classification of lymphoid neoplasms for epidemiologic research from the Pathology Working Group of the International Lymphoma Epidemiology Consortium (InterLymph). *Blood*. 2007;110:695-708.

^b SEER 17 areas (San Francisco, Connecticut, Detroit, Hawaii, Iowa, New Mexico, Seattle, Utah, Atlanta, San Jose-Monterey, Los Angeles, Alaska Native Registry, Rural Georgia, California excluding SF/SJM/LA, Kentucky, Louisiana and New Jersey).

^c Survival rates are relative rates expressed as percents.

^d NOS = Not otherwise specified. MALT = Mucosa-associated lymphoid tissue. NK = Natural killer.

- Statistic not displayed due to less than 25 cases.

Table 19.26 - continued
All Lymphoid Neoplasms With Detailed Non-Hodgkin Lymphoma Subtypes

SEER^b 2-Year Relative^c Survival Rates by Age at Diagnosis

All Races, Both Sexes, 2001-2005

Site	All Ages			Ages 0-19		Ages 20-64		Ages 65+	
	Count	Rate (95% C.I.)		Rate (95% C.I.)		Rate (95% C.I.)		Rate (95% C.I.)	
2(b) Non-Hodgkin lymphoma, T-cell	6,450	69.4 (68.1 , 70.6)		81.1 (78.1 , 83.7)		72.3 (70.7 , 73.8)		59.2 (56.7 , 61.6)	
2(b) 1. Precursor Non-Hodgkin lymphoma, T-cell	994	68.5 (65.4 , 71.4)		81.9 (78.3 , 85.0)		56.1 (50.8 , 61.0)		16.3 (7.0 , 28.9)	
2(b) 2. Mature Non-Hodgkin lymphoma, T-cell	5,377	70.0 (68.6 , 71.3)		80.1 (74.5 , 84.6)		74.8 (73.1 , 76.3)		60.5 (58.0 , 62.9)	
2(b) 2.1. Mycosis fungoides/Sezary syndrome	1,418	95.8 (94.0 , 97.1)		100.0 (100.0 , 100.0)		96.9 (95.2 , 98.0)		93.3 (88.3 , 96.2)	
2(b) 2.1.1. Mycosis fungoides	1,387	96.3 (94.5 , 97.5)		100.0 (100.0 , 100.0)		97.1 (95.4 , 98.1)		94.5 (89.3 , 97.2)	
2(b) 2.1.2. Sezary syndrome	31	70.8 (49.7 , 84.3)		- (- , -)		- (- , -)		- (- , -)	
2(b) 2.2. Peripheral T-cell lymphoma	3,462	62.3 (60.5 , 64.0)		79.6 (73.1 , 84.6)		67.8 (65.6 , 70.0)		51.1 (48.1 , 54.1)	
2(b) 2.2.1. Peripheral T-cell lymphoma, NOS ^d	1,197	45.6 (42.5 , 48.6)		67.1 (48.2 , 80.4)		52.9 (48.8 , 56.9)		34.5 (30.1 , 39.0)	
2(b) 2.2.2. Angioimmunoblastic T-cell lymphoma	321	48.5 (42.4 , 54.4)		- (- , -)		57.2 (48.4 , 65.1)		40.8 (32.6 , 48.9)	
2(b) 2.2.3. Subcutaneous panniculitis-like T-cell lymphoma	47	62.1 (46.1 , 74.6)		- (- , -)		72.2 (51.5 , 85.2)		- (- , -)	
2(b) 2.2.4. Anaplastic large cell lymphoma, T-cell or null-cell type	869	62.1 (58.6 , 65.4)		81.7 (73.7 , 87.5)		64.6 (60.1 , 68.8)		44.9 (37.8 , 51.8)	
2(b) 2.2.5. Hepatosplenic T-cell lymphoma	-	- (- , -)		- (- , -)		- (- , -)		- (- , -)	
2(b) 2.2.6. Enteropathy-type T-cell lymphoma	36	29.4 (14.6 , 46.0)		- (- , -)		- (- , -)		- (- , -)	
2(b) 2.2.7. Cutaneous T-cell lymphoma, NOS ^d	684	88.9 (85.5 , 91.6)		- (- , -)		92.8 (89.2 , 95.2)		82.6 (75.7 , 87.7)	
2(b) 2.2.8. Primary cutaneous anaplastic large cell lymphoma	284	91.5 (86.5 , 94.7)		- (- , -)		93.0 (86.9 , 96.3)		87.8 (76.7 , 93.9)	
2(b) 2.3. Adult T-cell leukemia/lymphoma	117	45.9 (36.0 , 55.3)		- (- , -)		46.1 (32.0 , 59.0)		41.0 (26.8 , 54.8)	
2(b) 2.4. NK ^d /T-cell lymphoma, nasal-type/aggressive NK ^d -cell leukemia	227	40.0 (33.2 , 46.6)		- (- , -)		42.0 (34.0 , 49.7)		36.3 (22.3 , 50.3)	
2(b) 2.5. T-cell large granular lymphocytic leukemia	70	78.1 (64.1 , 87.2)		- (- , -)		84.6 (64.8 , 93.7)		70.6 (48.7 , 84.5)	
2(b) 2.6. Prolymphocytic leukemia, T-cell	83	49.9 (37.6 , 60.9)		- (- , -)		53.3 (36.4 , 67.6)		46.1 (28.5 , 62.1)	
2(b) 3. Non-Hodgkin lymphoma, NOS ^d , T-cell	79	40.4 (29.0 , 51.5)		- (- , -)		40.2 (25.1 , 54.7)		44.1 (26.1 , 60.7)	
2(c) Non-Hodgkin lymphoma, unknown lineage	2,392	66.9 (64.8 , 68.9)		90.7 (88.3 , 92.6)		58.8 (55.0 , 62.4)		50.9 (47.0 , 54.6)	
2(c) 1. Precursor lymphoblastic leukemia/lymphoma, unknown lineage	1,195	70.5 (67.7 , 73.1)		91.0 (88.6 , 92.8)		38.9 (32.8 , 44.9)		20.4 (14.1 , 27.5)	
2(c) 2. Prolymphocytic leukemia, unknown lineage	52	58.8 (41.9 , 72.4)		- (- , -)		- (- , -)		55.0 (32.4 , 72.8)	
2(c) 3. Non-Hodgkin lymphoma, NOS ^d , unknown lineage	1,145	63.2 (60.0 , 66.3)		- (- , -)		70.7 (66.1 , 74.9)		57.8 (53.4 , 62.0)	
2(*) 1. Total precursor lymphoma/leukemia	6,220	73.3 (72.2 , 74.5)		91.1 (90.1 , 92.0)		48.4 (45.9 , 50.7)		19.7 (16.0 , 23.6)	
3 Composite Hodgkin lymphoma and Non-Hodgkin lymphoma	39	79.4 (61.5 , 89.7)		- (- , -)		- (- , -)		- (- , -)	
4 Lymphoid neoplasm, NOS ^d	3,343	56.9 (55.0 , 58.7)		81.5 (63.2 , 91.3)		65.5 (62.8 , 68.1)		50.0 (47.4 , 52.5)	

^a Morton LM, Turner JJ, Cerhan JR, Linet MS, Treseler PA, Clarke CA, Jack A, Cozen W, Maynadié M, Spinelli JJ, Costantini AS, Rüdiger T, Scarpa A, Zheng T, Weisenburger DD. Proposed classification of lymphoid neoplasms for epidemiologic research from the Pathology Working Group of the International Lymphoma Epidemiology Consortium (InterLymph). *Blood*. 2007;110:695-708.

^b SEER 17 areas (San Francisco, Connecticut, Detroit, Hawaii, Iowa, New Mexico, Seattle, Utah, Atlanta, San Jose-Monterey, Los Angeles, Alaska Native Registry, Rural Georgia, California excluding SF/SJM/LA, Kentucky, Louisiana and New Jersey).

^c Survival rates are relative rates expressed as percents.

^d NOS = Not otherwise specified. MALT = Mucosa-associated lymphoid tissue. NK = Natural killer.

- Statistic not displayed due to less than 25 cases.

Table 19.27
All Lymphoid Neoplasms With Detailed Non-Hodgkin Lymphoma Subtypes

SEER^b 2-Year Relative^c Survival Rates by Age at Diagnosis

All Races, Males, 2001-2005

Site	All Ages		Ages 0-19		Ages 20-64		Ages 65+	
	Count	Rate (95% C.I.)	Rate (95% C.I.)	Rate (95% C.I.)	Rate (95% C.I.)	Rate (95% C.I.)		
Lymphoid Neoplasm	57,402	75.3 (74.9 , 75.7)	90.6 (89.5 , 91.5)	79.8 (79.3 , 80.2)	67.0 (66.3 , 67.7)			
1 Hodgkin Lymphoma	5,196	88.3 (87.3 , 89.2)	98.0 (96.5 , 98.9)	91.5 (90.6 , 92.4)	56.6 (52.2 , 60.7)			
2 Non-Hodgkin lymphoma	50,463	74.5 (74.1 , 74.9)	89.0 (87.7 , 90.1)	78.5 (77.9 , 79.0)	67.9 (67.2 , 68.6)			
2(a) Non-Hodgkin lymphoma, B-cell	45,246	75.2 (74.8 , 75.7)	91.4 (90.0 , 92.6)	79.8 (79.3 , 80.4)	68.6 (67.8 , 69.3)			
2(a) 1. Precursor Non-Hodgkin lymphoma, B-cell	2,240	75.6 (73.6 , 77.4)	92.1 (90.5 , 93.4)	47.5 (43.5 , 51.5)	24.4 (16.6 , 33.1)			
2(a) 2. Mature Non-Hodgkin lymphoma, B-cell	41,268	75.4 (74.9 , 75.9)	89.6 (86.3 , 92.1)	81.0 (80.4 , 81.6)	69.0 (68.2 , 69.8)			
2(a) 2.1. Chronic/Small/Prolymphocytic/ Mantle B-cell Non-Hodgkin lymphoma	10,584	85.8 (84.9 , 86.6)	- (- , -)	91.1 (90.1 , 92.1)	81.7 (80.4 , 83.0)			
2(a) 2.1.1. Chronic/Small lymphocytic leukemia/lymphoma	9,167	87.8 (86.9 , 88.7)	- (- , -)	92.8 (91.7 , 93.7)	84.2 (82.8 , 85.5)			
2(a) 2.1.2. Prolymphocytic leukemia, B-cell	44	66.9 (48.7 , 79.8)	- (- , -)	- (- , -)	61.3 (35.9 , 79.1)			
2(a) 2.1.3. Mantle-cell lymphoma	1,373	72.6 (69.8 , 75.2)	- (- , -)	82.1 (78.6 , 85.1)	63.9 (59.6 , 67.8)			
2(a) 2.2. Lymphoplasmacytic lymphoma/ Waldenstrom macroglobulinemia	1,023	84.5 (81.4 , 87.1)	- (- , -)	88.6 (84.5 , 91.7)	81.9 (77.5 , 85.6)			
2(a) 2.2.1. Lymphoplasmacytic lymphoma	416	83.1 (78.0 , 87.1)	- (- , -)	85.3 (78.3 , 90.1)	81.1 (73.7 , 86.6)			
2(a) 2.2.2. Waldenstrom macroglobulinemia	607	85.5 (81.4 , 88.8)	- (- , -)	91.4 (85.8 , 94.9)	82.3 (76.6 , 86.8)			
2(a) 2.3. Diffuse large B-cell lymphoma (DLBCL)	11,099	65.0 (64.0 , 66.0)	90.5 (84.8 , 94.1)	71.3 (70.1 , 72.5)	55.6 (54.0 , 57.2)			
2(a) 2.3.1. DLBCL, NOS ^d	11,033	65.0 (64.0 , 66.0)	90.4 (84.8 , 94.1)	71.3 (70.0 , 72.4)	55.7 (54.0 , 57.3)			
2(a) 2.3.2. Intravascular large B-cell lymphoma	-	- (- , -)	- (- , -)	- (- , -)	- (- , -)			
2(a) 2.3.3. Primary effusion lymphoma	-	- (- , -)	- (- , -)	- (- , -)	- (- , -)			
2(a) 2.3.4. Mediastinal large B-cell lymphoma	42	93.0 (78.2 , 97.9)	- (- , -)	95.0 (79.2 , 98.9)	- (- , -)			
2(a) 2.4. Burkitt lymphoma/leukemia	985	57.5 (54.3 , 60.7)	87.5 (82.5 , 91.2)	51.0 (46.8 , 55.0)	33.6 (25.5 , 41.9)			
2(a) 2.5. Marginal-zone lymphoma (MZL)	2,275	92.8 (91.1 , 94.2)	- (- , -)	95.2 (93.5 , 96.4)	90.0 (86.9 , 92.5)			
2(a) 2.5.1. Splenic MZL	158	85.6 (76.9 , 91.2)	- (- , -)	90.5 (79.7 , 95.7)	80.2 (65.1 , 89.3)			
2(a) 2.5.2. Extranodal MZL, MALT ^d type	1,462	95.4 (93.3 , 96.8)	- (- , -)	95.8 (93.6 , 97.2)	94.8 (90.4 , 97.2)			
2(a) 2.5.3. Nodal MZL	655	88.8 (85.2 , 91.6)	- (- , -)	94.7 (91.0 , 96.9)	82.3 (75.9 , 87.1)			
2(a) 2.6. Follicular lymphoma	5,538	89.7 (88.7 , 90.7)	- (- , -)	93.1 (92.0 , 94.0)	84.0 (81.8 , 86.0)			
2(a) 2.7. Hairy-cell leukemia	746	97.0 (94.4 , 98.4)	- (- , -)	98.0 (95.7 , 99.1)	94.1 (85.1 , 97.7)			
2(a) 2.8. Plasma cell neoplasms	9,011	62.0 (60.8 , 63.1)	- (- , -)	71.9 (70.4 , 73.4)	53.6 (52.0 , 55.1)			
2(a) 2.8.1. Plasmacytoma	688	81.6 (78.0 , 84.8)	- (- , -)	88.9 (85.1 , 91.9)	69.9 (62.9 , 75.9)			
2(a) 2.8.2. Multiple myeloma/ plasma-cell leukemia	8,323	60.3 (59.1 , 61.5)	- (- , -)	69.9 (68.3 , 71.5)	52.6 (51.0 , 54.2)			
2(a) 2.9. Heavy chain disease	-	- (- , -)	- (- , -)	- (- , -)	- (- , -)			
2(a) 3. Non-Hodgkin lymphoma, B-cell, NOS ^d	1,738	70.6 (68.1 , 73.0)	- (- , -)	76.7 (73.4 , 79.7)	64.4 (60.5 , 68.1)			

^a Morton LM, Turner JJ, Cerhan JR, Linet MS, Treseler PA, Clarke CA, Jack A, Cozen W, Maynadié M, Spinelli JJ, Costantini AS, Rüdiger T, Scarpa A, Zheng T, Weisenburger DD. Proposed classification of lymphoid neoplasms for epidemiologic research from the Pathology Working Group of the International Lymphoma Epidemiology Consortium (InterLymph). *Blood*. 2007;110:695-708.

^b SEER 17 areas (San Francisco, Connecticut, Detroit, Hawaii, Iowa, New Mexico, Seattle, Utah, Atlanta, San Jose-Monterey, Los Angeles, Alaska Native Registry, Rural Georgia, California excluding SF/SJM/LA, Kentucky, Louisiana and New Jersey).

^c Survival rates are relative rates expressed as percents.

^d NOS = Not otherwise specified. MALT = Mucosa-associated lymphoid tissue. NK = Natural killer.

- Statistic not displayed due to less than 25 cases.

Table 19.27 - continued
All Lymphoid Neoplasms With Detailed Non-Hodgkin Lymphoma Subtypes

SEER^b 2-Year Relative^c Survival Rates by Age at Diagnosis

All Races, Males, 2001-2005

Site	Count	All Ages		Ages 0-19		Ages 20-64		Ages 65+	
		Rate (95% C.I.)	Rate (95% C.I.)	Rate (95% C.I.)	Rate (95% C.I.)	Rate (95% C.I.)	Rate (95% C.I.)		
2(b) Non-Hodgkin lymphoma, T-cell	3,905	68.9 (67.3 , 70.5)	79.1 (75.3 , 82.4)	70.0 (67.9 , 71.9)	61.8 (58.4 , 64.9)				
2(b) 1. Precursor Non-Hodgkin lymphoma, T-cell	687	67.4 (63.6 , 70.9)	79.6 (75.1 , 83.4)	55.4 (49.0 , 61.4)	0.0 (- , -)				
2(b) 2. Mature Non-Hodgkin lymphoma, T-cell	3,171	69.7 (67.9 , 71.4)	79.4 (71.7 , 85.1)	72.5 (70.3 , 74.5)	63.5 (60.1 , 66.7)				
2(b) 2.1. Mycosis fungoides/Sezary syndrome	817	96.0 (93.4 , 97.6)	- (- , -)	96.3 (93.6 , 97.9)	94.6 (89.8 , 97.1)				
2(b) 2.1.1. Mycosis fungoides	802	96.6 (93.9 , 98.1)	- (- , -)	96.6 (94.0 , 98.1)	95.3 (90.5 , 97.7)				
2(b) 2.1.2. Sezary syndrome	-	- (- , -)	- (- , -)	- (- , -)	- (- , -)				
2(b) 2.2. Peripheral T-cell lymphoma	2,068	62.6 (60.2 , 64.8)	78.3 (69.6 , 84.7)	66.5 (63.6 , 69.2)	52.8 (48.6 , 56.8)				
2(b) 2.2.1. Peripheral T-cell lymphoma, NOS ^d	717	48.2 (44.2 , 52.1)	- (- , -)	52.3 (47.1 , 57.2)	39.5 (33.2 , 45.8)				
2(b) 2.2.2. Angioimmunoblastic T-cell lymphoma	172	47.8 (39.4 , 55.7)	- (- , -)	57.0 (45.3 , 67.0)	37.7 (26.3 , 49.1)				
2(b) 2.2.3. Subcutaneous panniculitis-like T-cell lymphoma	-	- (- , -)	- (- , -)	- (- , -)	- (- , -)				
2(b) 2.2.4. Anaplastic large cell lymphoma, T-cell or null-cell type	565	62.0 (57.6 , 66.1)	79.7 (68.8 , 87.1)	63.7 (58.2 , 68.7)	45.6 (36.0 , 54.8)				
2(b) 2.2.5. Hepatosplenic T-cell lymphoma	-	- (- , -)	- (- , -)	- (- , -)	- (- , -)				
2(b) 2.2.6. Enteropathy-type T-cell lymphoma	-	- (- , -)	- (- , -)	- (- , -)	- (- , -)				
2(b) 2.2.7. Cutaneous T-cell lymphoma, NOS ^d	408	88.6 (84.0 , 91.9)	- (- , -)	93.0 (88.2 , 95.9)	80.3 (70.3 , 87.3)				
2(b) 2.2.8. Primary cutaneous anaplastic large cell lymphoma	153	89.0 (81.3 , 93.7)	- (- , -)	90.4 (79.8 , 95.6)	85.8 (70.5 , 93.5)				
2(b) 2.3. Adult T-cell leukemia/lymphoma	66	48.8 (35.3 , 61.0)	- (- , -)	41.4 (24.5 , 57.5)	47.1 (24.9 , 66.5)				
2(b) 2.4. NK ^d /T-cell lymphoma, nasal-type/aggressive NK ^d -cell leukemia	139	35.2 (27.0 , 43.6)	- (- , -)	35.3 (26.0 , 44.7)	32.3 (14.1 , 52.1)				
2(b) 2.5. T-cell large granular lymphocytic leukemia	40	67.5 (48.3 , 80.8)	- (- , -)	- (- , -)	- (- , -)				
2(b) 2.6. Prolymphocytic leukemia, T-cell	41	53.8 (36.6 , 68.2)	- (- , -)	- (- , -)	- (- , -)				
2(b) 3. Non-Hodgkin lymphoma, NOS ^d , T-cell	47	38.6 (24.0 , 52.9)	- (- , -)	40.8 (21.5 , 59.4)	- (- , -)				
2(c) Non-Hodgkin lymphoma, unknown lineage	1,312	66.9 (64.0 , 69.6)	90.3 (87.0 , 92.7)	54.8 (50.0 , 59.5)	52.0 (46.1 , 57.5)				
2(c) 1. Precursor lymphoblastic leukemia/lymphoma, unknown lineage	681	71.4 (67.6 , 74.8)	90.8 (87.6 , 93.2)	36.5 (28.8 , 44.3)	23.9 (14.3 , 34.7)				
2(c) 2. Prolymphocytic leukemia, unknown lineage	34	53.0 (32.1 , 70.1)	- (- , -)	- (- , -)	- (- , -)				
2(c) 3. Non-Hodgkin lymphoma, NOS ^d , unknown lineage	597	62.1 (57.6 , 66.3)	- (- , -)	65.6 (59.5 , 71.0)	58.6 (51.6 , 64.8)				
2(*) 1. Total precursor lymphoma/leukemia	3,608	73.2 (71.7 , 74.7)	89.7 (88.3 , 90.9)	47.9 (44.8 , 51.0)	21.5 (15.9 , 27.6)				
3 Composite Hodgkin lymphoma and Non-Hodgkin lymphoma	-	- (- , -)	- (- , -)	- (- , -)	- (- , -)				
4 Lymphoid neoplasm, NOS ^d	1,729	56.2 (53.6 , 58.8)	- (- , -)	60.9 (57.3 , 64.3)	50.9 (47.1 , 54.7)				

^a Morton LM, Turner JJ, Cerhan JR, Linet MS, Treseler PA, Clarke CA, Jack A, Cozen W, Maynadié M, Spinelli JJ, Costantini AS, Rüdiger T, Scarpa A, Zheng T, Weisenburger DD. Proposed classification of lymphoid neoplasms for epidemiologic research from the Pathology Working Group of the International Lymphoma Epidemiology Consortium (InterLymph). *Blood*. 2007;110:695-708.

^b SEER 17 areas (San Francisco, Connecticut, Detroit, Hawaii, Iowa, New Mexico, Seattle, Utah, Atlanta, San Jose-Monterey, Los Angeles, Alaska Native Registry, Rural Georgia, California excluding SF/SJM/LA, Kentucky, Louisiana and New Jersey).

^c Survival rates are relative rates expressed as percents.

^d NOS = Not otherwise specified. MALT = Mucosa-associated lymphoid tissue. NK = Natural killer.

- Statistic not displayed due to less than 25 cases.

Table 19.28
All Lymphoid Neoplasms With Detailed Non-Hodgkin Lymphoma Subtypes

SEER^b 2-Year Relative^c Survival Rates by Age at Diagnosis

All Races, Females, 2001-2005

Site	All Ages		Ages 0-19		Ages 20-64		Ages 65+	
	Count	Rate (95% C.I.)	Rate (95% C.I.)	Rate (95% C.I.)	Rate (95% C.I.)	Rate (95% C.I.)		
Lymphoid Neoplasm	47,588	76.2 (75.7 , 76.6)	92.5 (91.4 , 93.5)	84.6 (84.1 , 85.2)	67.0 (66.3 , 67.7)			
1 Hodgkin Lymphoma	4,423	90.5 (89.5 , 91.4)	96.6 (94.7 , 97.9)	95.0 (94.2 , 95.8)	61.6 (57.3 , 65.6)			
2 Non-Hodgkin lymphoma	41,526	75.2 (74.8 , 75.7)	91.3 (89.9 , 92.5)	82.9 (82.3 , 83.5)	67.9 (67.2 , 68.7)			
2(a) Non-Hodgkin lymphoma, B-cell	37,901	75.8 (75.3 , 76.3)	92.4 (90.8 , 93.8)	83.9 (83.3 , 84.6)	68.8 (68.1 , 69.6)			
2(a) 1. Precursor Non-Hodgkin lymphoma, B-cell	1,791	75.1 (72.9 , 77.1)	94.3 (92.8 , 95.6)	48.3 (43.6 , 52.9)	16.2 (10.7 , 22.8)			
2(a) 2. Mature Non-Hodgkin lymphoma, B-cell	34,512	76.0 (75.5 , 76.5)	82.0 (75.9 , 86.7)	85.3 (84.6 , 85.9)	69.3 (68.6 , 70.1)			
2(a) 2.1. Chronic/Small/Prolymphocytic/ Mantle B-cell Non-Hodgkin lymphoma	7,092	87.2 (86.1 , 88.2)	- (- , -)	94.9 (93.7 , 95.9)	83.6 (82.2 , 84.9)			
2(a) 2.1.1. Chronic/Small lymphocytic leukemia/lymphoma	6,447	89.0 (87.9 , 90.0)	- (- , -)	96.6 (95.5 , 97.5)	85.5 (84.0 , 86.9)			
2(a) 2.1.2. Prolymphocytic leukemia, B-cell	42	45.9 (28.5 , 61.8)	- (- , -)	- (- , -)	38.2 (19.4 , 56.9)			
2(a) 2.1.3. Mantle-cell lymphoma	603	70.9 (66.6 , 74.9)	- (- , -)	80.6 (74.0 , 85.7)	65.6 (59.8 , 70.7)			
2(a) 2.2. Lymphoplasmacytic lymphoma/ Waldenstrom macroglobulinemia	739	85.5 (81.9 , 88.4)	- (- , -)	90.1 (85.1 , 93.6)	83.0 (78.2 , 86.8)			
2(a) 2.2.1. Lymphoplasmacytic lymphoma	336	85.4 (79.8 , 89.5)	- (- , -)	85.5 (76.5 , 91.2)	85.0 (77.5 , 90.1)			
2(a) 2.2.2. Waldenstrom macroglobulinemia	403	85.6 (80.6 , 89.3)	- (- , -)	93.8 (87.2 , 97.0)	81.1 (74.3 , 86.3)			
2(a) 2.3. Diffuse large B-cell lymphoma (DLBCL)	9,742	65.7 (64.6 , 66.7)	80.6 (72.1 , 86.7)	77.5 (76.1 , 78.9)	56.6 (55.1 , 58.1)			
2(a) 2.3.1. DLBCL, NOS ^d	9,677	65.6 (64.5 , 66.6)	81.0 (72.5 , 87.1)	77.4 (75.9 , 78.7)	56.7 (55.2 , 58.1)			
2(a) 2.3.2. Intravascular large B-cell lymphoma	-	- (- , -)	- (- , -)	- (- , -)	- (- , -)			
2(a) 2.3.3. Primary effusion lymphoma	-	- (- , -)	- (- , -)	- (- , -)	- (- , -)			
2(a) 2.3.4. Mediastinal large B-cell lymphoma	52	88.1 (74.8 , 94.7)	- (- , -)	95.4 (82.2 , 98.9)	- (- , -)			
2(a) 2.4. Burkitt lymphoma/leukemia	347	53.6 (47.8 , 58.9)	81.6 (69.2 , 89.4)	56.4 (48.2 , 63.8)	33.3 (24.4 , 42.5)			
2(a) 2.5. Marginal-zone lymphoma (MZL)	2,823	93.4 (91.9 , 94.6)	- (- , -)	97.8 (96.5 , 98.6)	89.4 (87.0 , 91.5)			
2(a) 2.5.1. Splenic MZL	181	90.4 (83.1 , 94.7)	- (- , -)	98.2 (86.4 , 99.8)	83.9 (72.0 , 91.0)			
2(a) 2.5.2. Extranodal MZL, MALT ^d type	1,863	95.8 (94.1 , 97.0)	- (- , -)	98.4 (96.9 , 99.2)	93.3 (90.2 , 95.5)			
2(a) 2.5.3. Nodal MZL	779	88.1 (84.8 , 90.7)	- (- , -)	96.0 (92.4 , 97.9)	82.5 (77.4 , 86.5)			
2(a) 2.6. Follicular lymphoma	5,661	91.4 (90.4 , 92.2)	- (- , -)	95.4 (94.5 , 96.2)	86.8 (85.0 , 88.4)			
2(a) 2.7. Hairy-cell leukemia	217	95.4 (90.0 , 97.9)	- (- , -)	97.3 (91.9 , 99.2)	91.3 (79.3 , 96.5)			
2(a) 2.8. Plasma cell neoplasms	7,885	60.9 (59.7 , 62.1)	- (- , -)	73.6 (71.8 , 75.2)	53.0 (51.4 , 54.5)			
2(a) 2.8.1. Plasmacytoma	458	78.2 (73.4 , 82.2)	- (- , -)	84.5 (78.5 , 88.9)	71.6 (64.2 , 77.8)			
2(a) 2.8.2. Multiple myeloma/ plasma-cell leukemia	7,427	59.8 (58.5 , 61.0)	- (- , -)	72.7 (70.8 , 74.4)	52.0 (50.4 , 53.6)			
2(a) 2.9. Heavy chain disease	-	- (- , -)	- (- , -)	- (- , -)	- (- , -)			
2(a) 3. Non-Hodgkin lymphoma, B-cell, NOS ^d	1,598	73.4 (70.7 , 75.8)	- (- , -)	82.5 (78.8 , 85.6)	67.9 (64.3 , 71.1)			

^a Morton LM, Turner JJ, Cerhan JR, Linet MS, Treseler PA, Clarke CA, Jack A, Cozen W, Maynadié M, Spinelli JJ, Costantini AS, Rüdiger T, Scarpa A, Zheng T, Weisenburger DD. Proposed classification of lymphoid neoplasms for epidemiologic research from the Pathology Working Group of the International Lymphoma Epidemiology Consortium (InterLymph). *Blood*. 2007;110:695-708.

^b SEER 17 areas (San Francisco, Connecticut, Detroit, Hawaii, Iowa, New Mexico, Seattle, Utah, Atlanta, San Jose-Monterey, Los Angeles, Alaska Native Registry, Rural Georgia, California excluding SF/SJM/LA, Kentucky, Louisiana and New Jersey).

^c Survival rates are relative rates expressed as percents.

^d NOS = Not otherwise specified. MALT = Mucosa-associated lymphoid tissue. NK = Natural killer.

- Statistic not displayed due to less than 25 cases.

Table 19.28 - continued
All Lymphoid Neoplasms With Detailed Non-Hodgkin Lymphoma Subtypes

SEER^b 2-Year Relative^c Survival Rates by Age at Diagnosis

All Races, Females, 2001-2005

Site	Count	All Ages		Ages 0-19		Ages 20-64		Ages 65+	
		Rate (95% C.I.)	Rate (95% C.I.)	Rate (95% C.I.)	Rate (95% C.I.)	Rate (95% C.I.)	Rate (95% C.I.)		
2(b) Non-Hodgkin lymphoma, T-cell	2,545	70.0 (68.0 , 71.9)	85.1 (80.1 , 89.0)	75.9 (73.4 , 78.2)	55.9 (52.2 , 59.5)				
2(b) 1. Precursor Non-Hodgkin lymphoma, T-cell	307	71.0 (65.3 , 75.9)	87.8 (81.3 , 92.1)	57.4 (48.0 , 65.7)	34.1 (15.6 , 53.6)				
2(b) 2. Mature Non-Hodgkin lymphoma, T-cell	2,206	70.3 (68.1 , 72.3)	81.2 (72.0 , 87.6)	78.3 (75.8 , 80.6)	56.6 (52.8 , 60.3)				
2(b) 2.1. Mycosis fungoides/Sezary syndrome	601	95.6 (92.8 , 97.3)	- (- , -)	97.6 (95.1 , 98.8)	89.4 (80.5 , 94.4)				
2(b) 2.1.1. Mycosis fungoides	585	96.0 (93.2 , 97.7)	- (- , -)	97.5 (95.0 , 98.8)	91.1 (81.6 , 95.8)				
2(b) 2.1.2. Sezary syndrome	-	- (- , -)	- (- , -)	- (- , -)	- (- , -)				
2(b) 2.2. Peripheral T-cell lymphoma	1,394	61.9 (59.0 , 64.6)	81.5 (70.7 , 88.6)	70.1 (66.4 , 73.5)	49.1 (44.6 , 53.4)				
2(b) 2.2.1. Peripheral T-cell lymphoma, NOS ^d	480	41.7 (36.9 , 46.4)	- (- , -)	54.1 (47.1 , 60.5)	28.6 (22.6 , 35.0)				
2(b) 2.2.2. Angioimmunoblastic T-cell lymphoma	149	49.5 (40.5 , 57.8)	- (- , -)	57.3 (43.5 , 69.0)	44.0 (32.3 , 55.1)				
2(b) 2.2.3. Subcutaneous panniculitis-like T-cell lymphoma	34	67.7 (48.6 , 81.1)	- (- , -)	- (- , -)	- (- , -)				
2(b) 2.2.4. Anaplastic large cell lymphoma, T-cell or null-cell type	304	62.2 (56.1 , 67.7)	84.9 (70.9 , 92.5)	66.9 (58.5 , 74.0)	43.4 (33.0 , 53.3)				
2(b) 2.2.5. Hepatosplenic T-cell lymphoma	-	- (- , -)	- (- , -)	- (- , -)	- (- , -)				
2(b) 2.2.6. Enteropathy-type T-cell lymphoma	-	- (- , -)	- (- , -)	- (- , -)	- (- , -)				
2(b) 2.2.7. Cutaneous T-cell lymphoma, NOS ^d	276	89.1 (83.5 , 92.8)	- (- , -)	92.5 (86.0 , 96.1)	84.4 (73.9 , 90.9)				
2(b) 2.2.8. Primary cutaneous anaplastic large cell lymphoma	131	94.1 (86.8 , 97.4)	- (- , -)	95.3 (86.8 , 98.4)	90.5 (69.1 , 97.3)				
2(b) 2.3. Adult T-cell leukemia/lymphoma	51	42.0 (27.5 , 55.9)	- (- , -)	- (- , -)	35.7 (18.2 , 53.7)				
2(b) 2.4. NK ^d /T-cell lymphoma, nasal-type/aggressive NK ^d -cell leukemia	88	47.0 (35.6 , 57.5)	- (- , -)	54.3 (39.9 , 66.6)	39.0 (19.6 , 58.0)				
2(b) 2.5. T-cell large granular lymphocytic leukemia	30	92.5 (62.4 , 98.7)	- (- , -)	- (- , -)	- (- , -)				
2(b) 2.6. Prolymphocytic leukemia, T-cell	42	43.8 (26.4 , 59.9)	- (- , -)	- (- , -)	- (- , -)				
2(b) 3. Non-Hodgkin lymphoma, NOS ^d , T-cell	32	42.5 (24.7 , 59.3)	- (- , -)	- (- , -)	- (- , -)				
2(c) Non-Hodgkin lymphoma, unknown lineage	1,080	66.9 (63.7 , 69.9)	91.3 (87.5 , 94.0)	65.2 (59.1 , 70.7)	50.0 (44.8 , 54.9)				
2(c) 1. Precursor lymphoblastic leukemia/lymphoma, unknown lineage	514	69.3 (64.9 , 73.3)	91.3 (87.5 , 93.9)	42.3 (32.7 , 51.6)	17.0 (9.5 , 26.4)				
2(c) 2. Prolymphocytic leukemia, unknown lineage	-	- (- , -)	- (- , -)	- (- , -)	- (- , -)				
2(c) 3. Non-Hodgkin lymphoma, NOS ^d , unknown lineage	548	64.4 (59.7 , 68.8)	- (- , -)	79.7 (72.2 , 85.3)	57.3 (51.4 , 62.7)				
2(*) 1. Total precursor lymphoma/leukemia	2,612	73.5 (71.7 , 75.2)	93.1 (91.7 , 94.3)	49.1 (45.2 , 52.8)	18.2 (13.5 , 23.4)				
3 Composite Hodgkin lymphoma and Non-Hodgkin lymphoma	25	81.9 (58.5 , 92.9)	- (- , -)	- (- , -)	- (- , -)				
4 Lymphoid neoplasm, NOS ^d	1,614	57.6 (54.8 , 60.3)	- (- , -)	72.8 (68.6 , 76.6)	49.2 (45.7 , 52.6)				

^a Morton LM, Turner JJ, Cerhan JR, Linet MS, Treseler PA, Clarke CA, Jack A, Cozen W, Maynadié M, Spinelli JJ, Costantini AS, Rüdiger T, Scarpa A, Zheng T, Weisenburger DD. Proposed classification of lymphoid neoplasms for epidemiologic research from the Pathology Working Group of the International Lymphoma Epidemiology Consortium (InterLymph). *Blood*. 2007;110:695-708.

^b SEER 17 areas (San Francisco, Connecticut, Detroit, Hawaii, Iowa, New Mexico, Seattle, Utah, Atlanta, San Jose-Monterey, Los Angeles, Alaska Native Registry, Rural Georgia, California excluding SF/SJM/LA, Kentucky, Louisiana and New Jersey).

^c Survival rates are relative rates expressed as percents.

^d NOS = Not otherwise specified. MALT = Mucosa-associated lymphoid tissue. NK = Natural killer.

- Statistic not displayed due to less than 25 cases.

SEER Observed Incidence, SEER Delay Adjusted Incidence and US Death Rates^a Non-Hodgkin Lymphoma, by Race and Sex

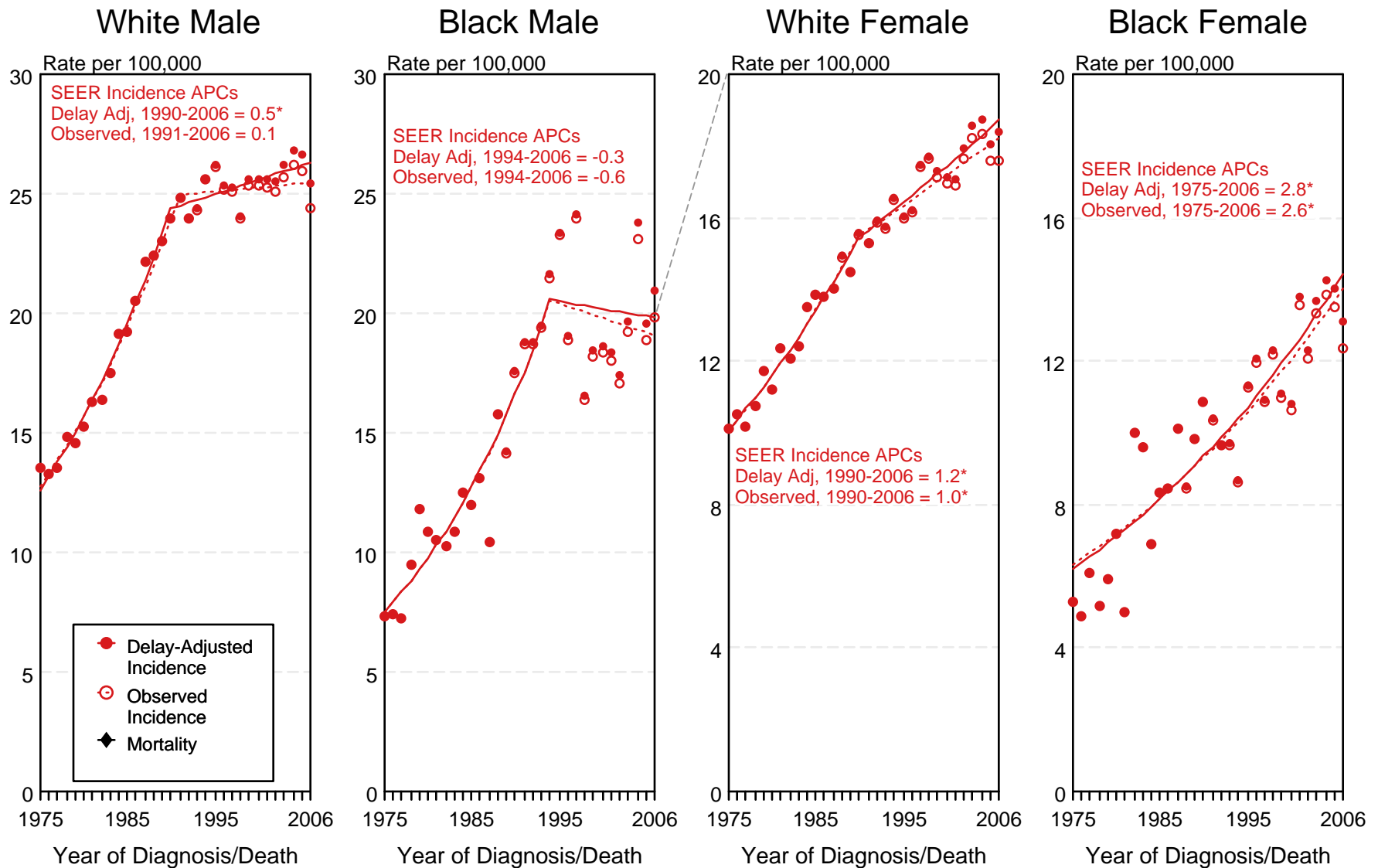


Figure 19.1

^a Source: SEER 9 areas and US Mortality Files (National Center for Health Statistics, CDC). Rates are age-adjusted to the 2000 US Std Population (19 age groups - Census P25-1103). Regression lines and APCs are calculated using the Joinpoint Regression Program Version 3.3.1, April 2008, National Cancer Institute. The APC is the Annual Percent Change for the regression line segments. The APC shown on the graph is for the most recent trend.
* The APC is significantly different from zero ($p < 0.05$).

SEER Incidence and US Death Rates^a Non-Hodgkin Lymphoma, Both Sexes

Joinpoint Analyses for Whites and Blacks from 1975-2006
and for Asian/Pacific Islanders, American Indians/Alaska Natives and Hispanics from 1992-2006

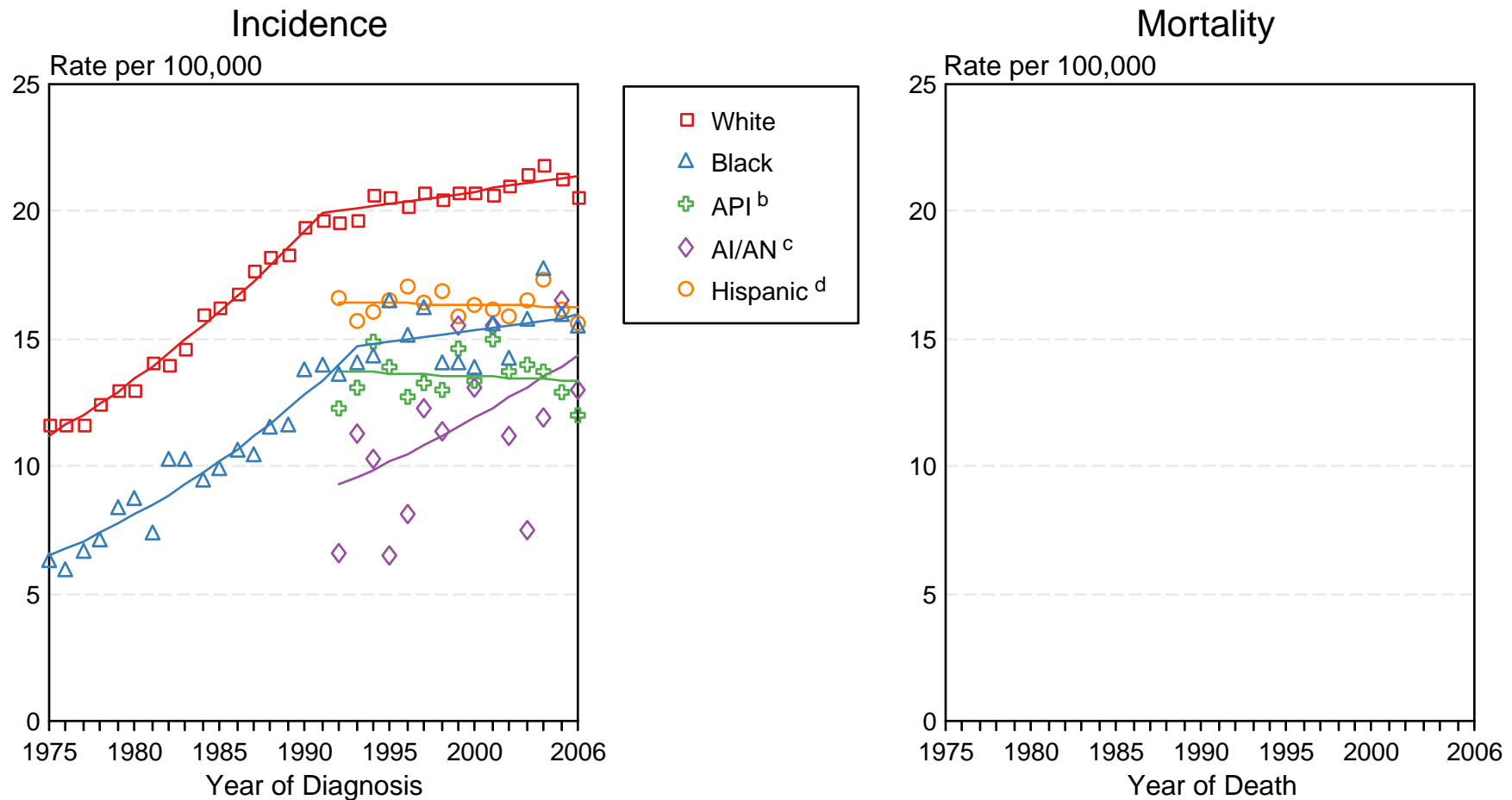


Figure 19.2

Source: Incidence data for whites and blacks are from the SEER 9 areas (San Francisco, Connecticut, Detroit, Hawaii, Iowa, New Mexico, Seattle, Utah, Atlanta). Incidence data for Asian/Pacific Islanders, American Indians/Alaska Natives and Hispanics are from the SEER 13 Areas (SEER 9 Areas, San Jose-Monterey, Los Angeles, Alaska Native Registry and Rural Georgia). Mortality data are from US Mortality Files, National Center for Health Statistics, CDC.

^a Rates are age-adjusted to the 2000 US Std Population (19 age groups - Census P25-1103). Regression lines are calculated using the Joinpoint Regression Program Version 3.3.1, April 2008, National Cancer Institute. Joinpoint analyses for Whites and Blacks during the 1975-2006 period allow a maximum of 4 joinpoints. Analyses for other ethnic groups during the period 1992-2006 allow a maximum of 2 joinpoints.

^b API = Asian/Pacific Islander.

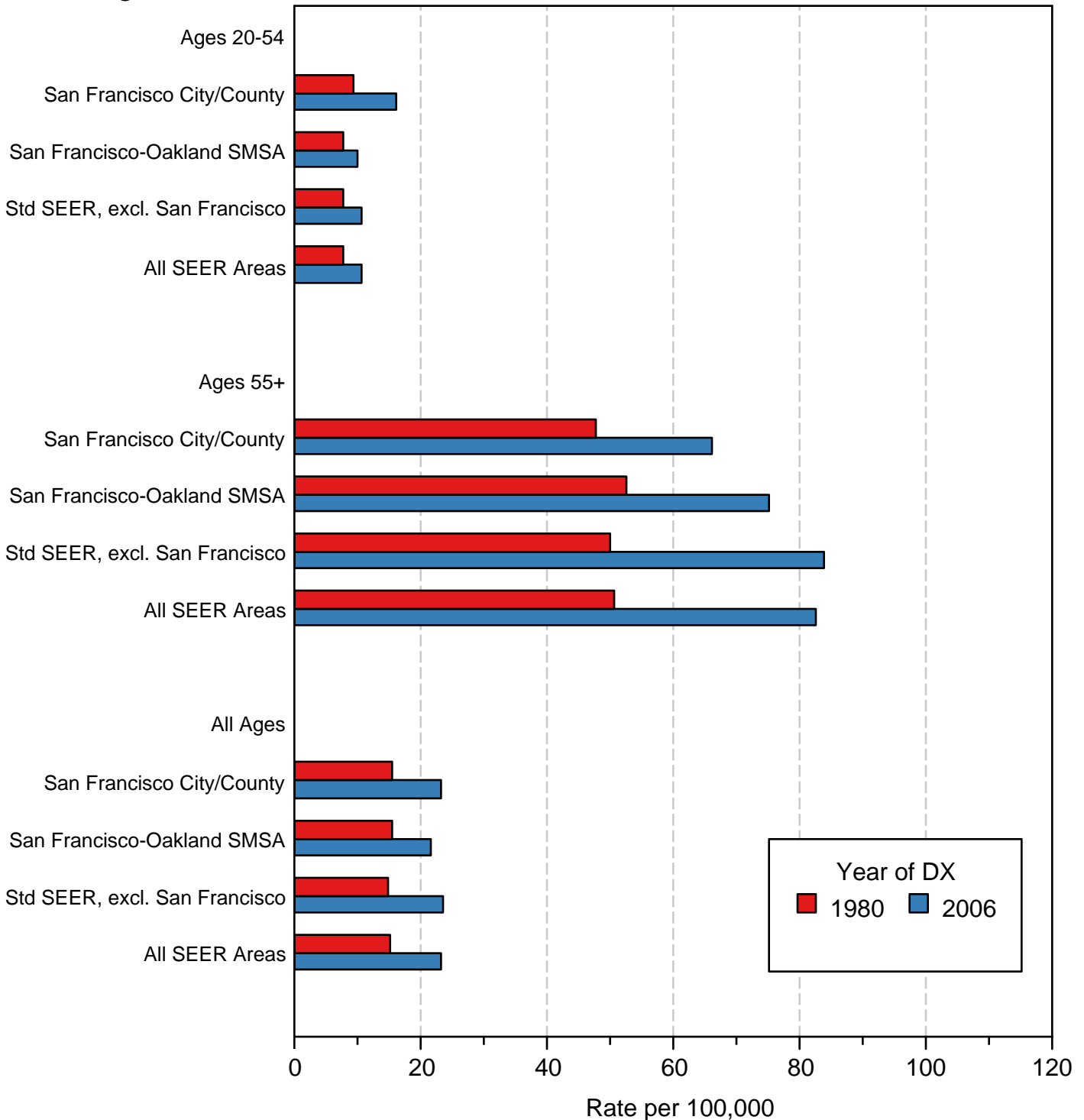
^c AI/AN = American Indian/Alaska Native. Rates for American Indian/Alaska Native are based on the CHSDA(Contract Health Service Delivery Area) counties.

^d Hispanic is not mutually exclusive from whites, blacks, Asian/Pacific Islanders, and American Indians/Alaska Natives. Incidence data for Hispanics are based on NHIA and exclude cases from the Alaska Native Registry. Mortality data for Hispanics exclude cases from Connecticut, Maine, Maryland, Minnesota, New Hampshire, New York, North Dakota, Oklahoma, and Vermont.

Figure 19.3

Non-Hodgkin Lymphoma Incidence Rates, 1980 vs 2006 Males

Age/Area



Source: SEER 9 areas. Rates are age-adjusted to the 2000 US Std Population (19 age groups - Census P25-1103).

Non-Hodgkin Lymphoma SEER Incidence by Age 1975-1977 vs 2004-2006 All Races, Males

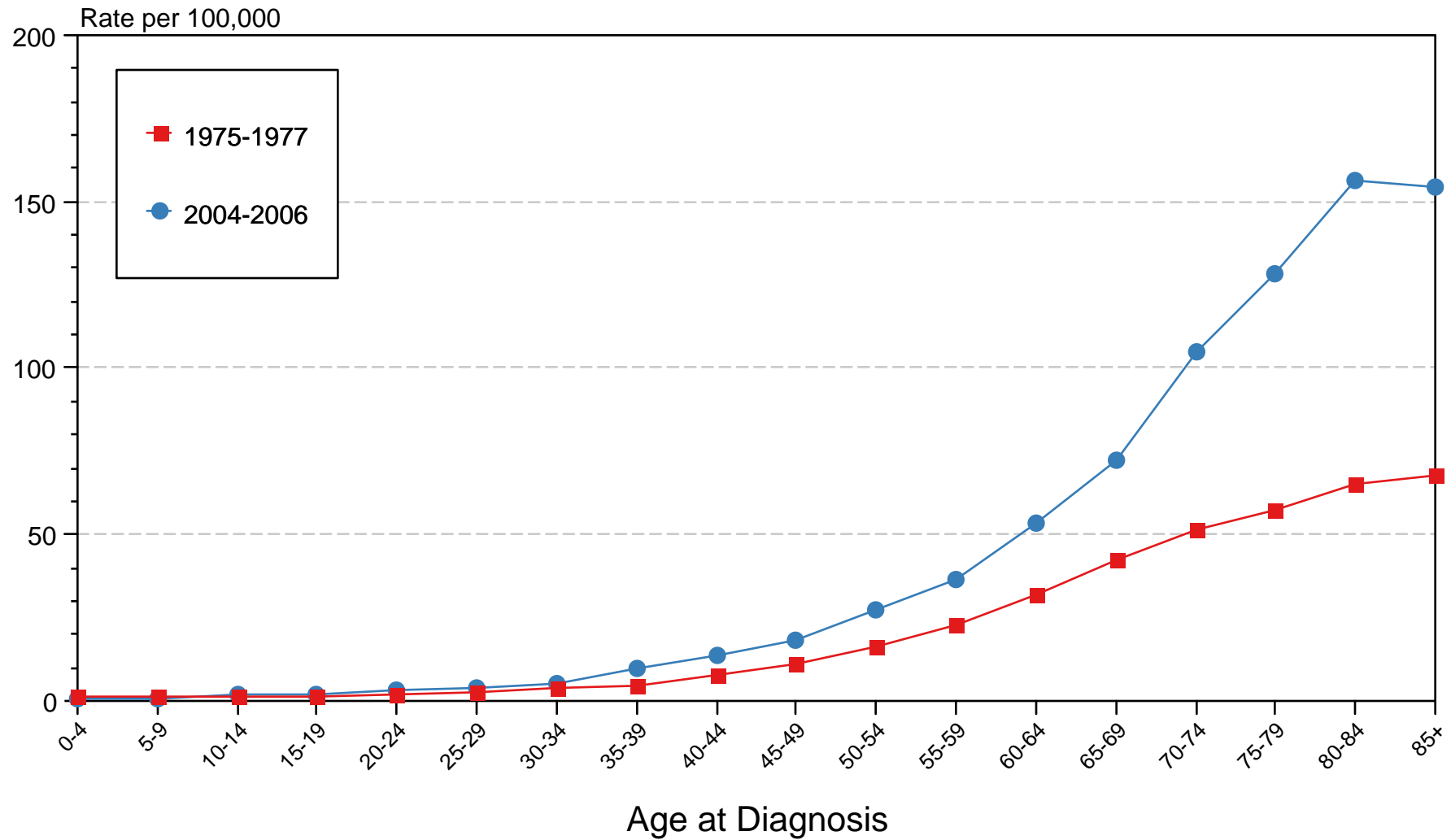


Figure 19.4

Source: SEER 9 areas. Rates are age-adjusted as appropriate to the 2000 US Std Population (19 age groups - Census P25-1103).