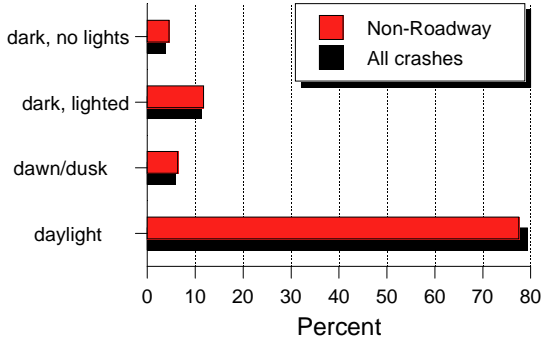
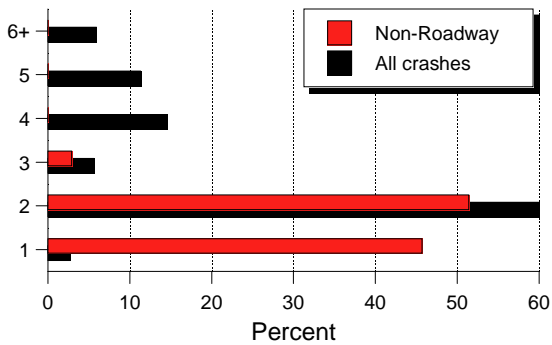


# Non-Roadway

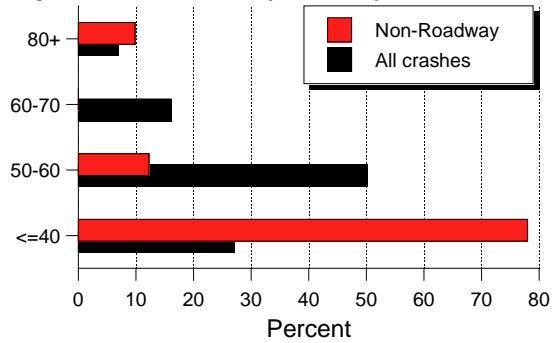
## Light Condition



## Number of Lanes



## Speed Limit (km/h)



**Figure 112.** Light condition, number of lanes, and speed limit in “Non-Roadway.”

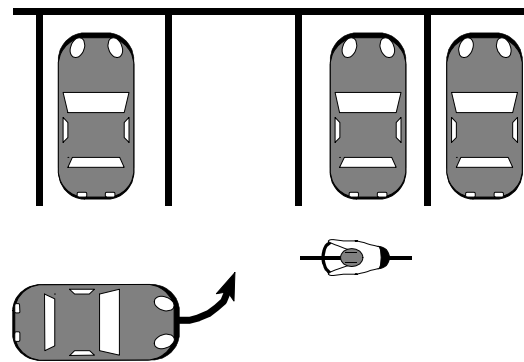
## Development Character

- ▶ Urban ..... 66%
- ▶ Rural ..... 34%

## Non-Roadway Location

- ▶ Parking lot ..... 71%
- ▶ Driveway/Alley ... 22%
- ▶ Sidewalk ..... 4%
- ▶ Other ..... 4%

## Example Parking Lot Positions



Parking lot locations accounted for 71% of this crash type.

**Figure 113.** Positions in “Non-Roadway.”