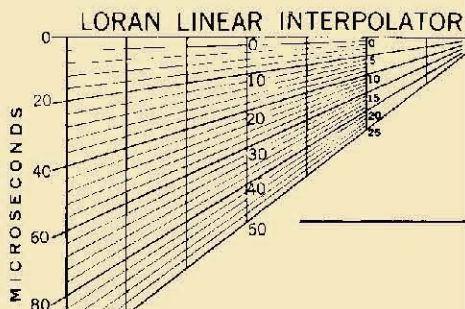




NOTE E
(Protected area 15 CFR 922)
The following activities are prohibited within the Stellwagen Bank Marine Sanctuary:
Certain discharging or dumping
Industrial exploring or developing
Drilling and dredging
Removing historical artifacts
Lightering
Refer to 15 CFR 922 for details of Sanctuary regulations.

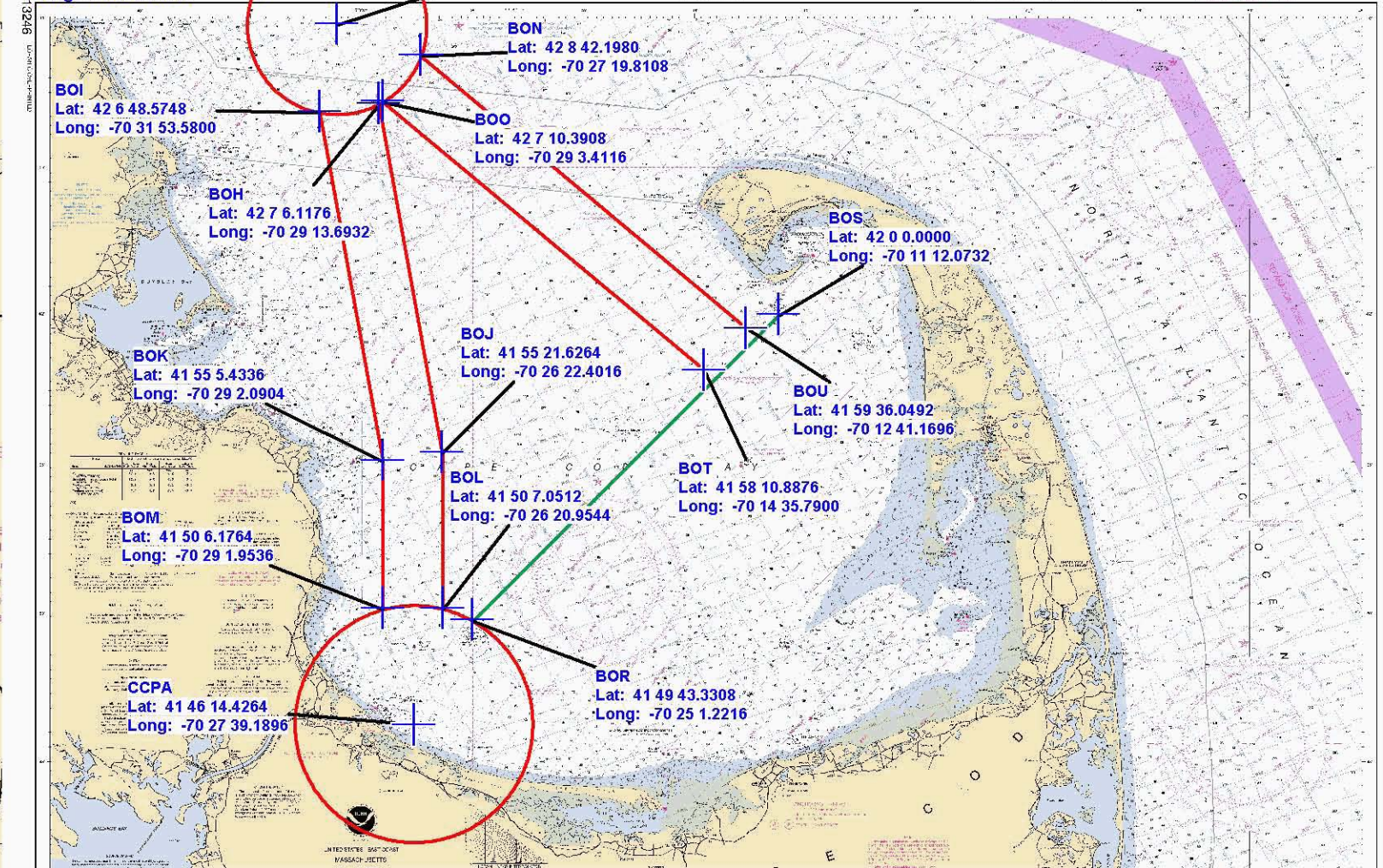
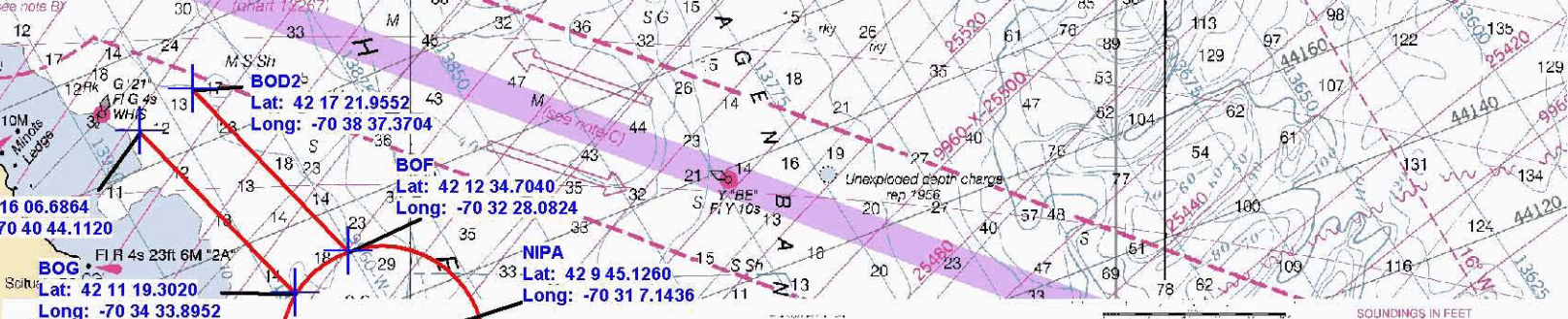


CURRENT DIAGRAM
GEORGES BANK AND NANTUCKET S
Explainer

Hourly directions and velocities of tidal currents at thirteen arrows. The length of the arrow from the center of the circle is velocity on a scale of one inch equals two knots. The figures at 12 hours after the time of maximum flood at Peconic Rip Channel, the of which are given in the National Ocean Service Atlantic Coast velocity plotted should be increased by 20 percent when the moon decreased by 20 percent when the moon is in first or third quarter on tidal currents, see Current Tables, Atlantic Coast.



CAUTION
Temporary changes or defects in aids to navigation are not indicated on this chart. See Local Notice to Mariners.
During some winter months or when endangered by ice, certain aids to navigation are



- BOD2**
Lat: 42 17 21.9552
Long: -70 38 37.3704
- BOE**
Lat: 42 16 06.6864
Long: -70 40 44.1120
- BOG**
Lat: 42 11 19.3020
Long: -70 34 33.8952
- NIPA**
Lat: 42 9 45.1260
Long: -70 31 7.1436
- BON**
Lat: 42 8 42.1980
Long: -70 27 19.8108
- BOI**
Lat: 42 6 48.5748
Long: -70 31 53.5800
- BOO**
Lat: 42 7 10.3908
Long: -70 29 3.4116
- BOH**
Lat: 42 7 6.1176
Long: -70 29 13.6932
- BOS**
Lat: 42 0 0.0000
Long: -70 11 12.0732
- BOK**
Lat: 41 55 5.4336
Long: -70 29 2.0904
- BOJ**
Lat: 41 55 21.6264
Long: -70 26 22.4016
- BOU**
Lat: 41 59 36.0492
Long: -70 12 41.1696
- BOL**
Lat: 41 50 7.0512
Long: -70 26 20.9544
- BOT**
Lat: 41 58 10.8876
Long: -70 14 35.7900
- BOM**
Lat: 41 50 6.1764
Long: -70 29 1.9536
- BOR**
Lat: 41 49 43.3308
Long: -70 25 1.2216
- CCPA**
Lat: 41 46 14.4264
Long: -70 27 39.1896