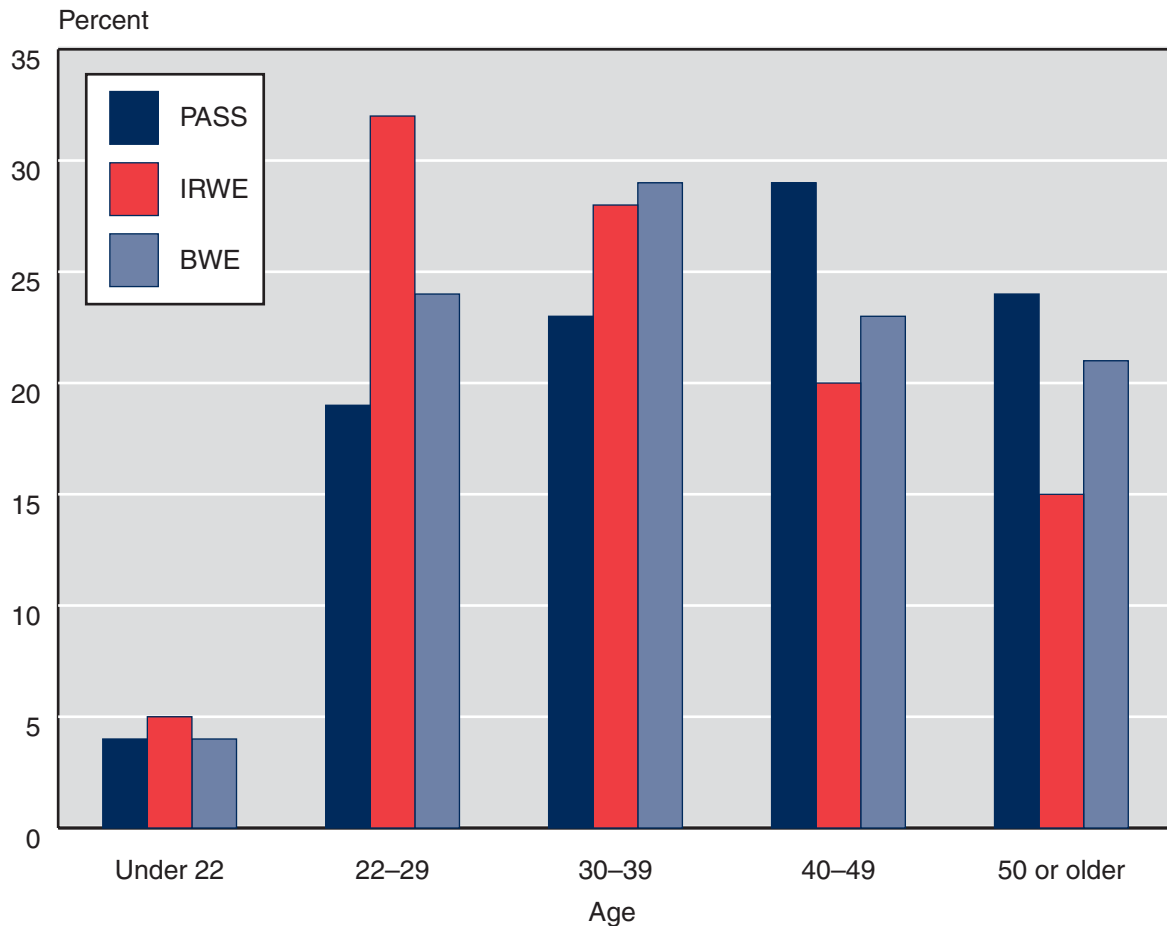


**Other Work
Incentive Participants**

Chart 9.
Percentage distribution, by age and provision, December 2006

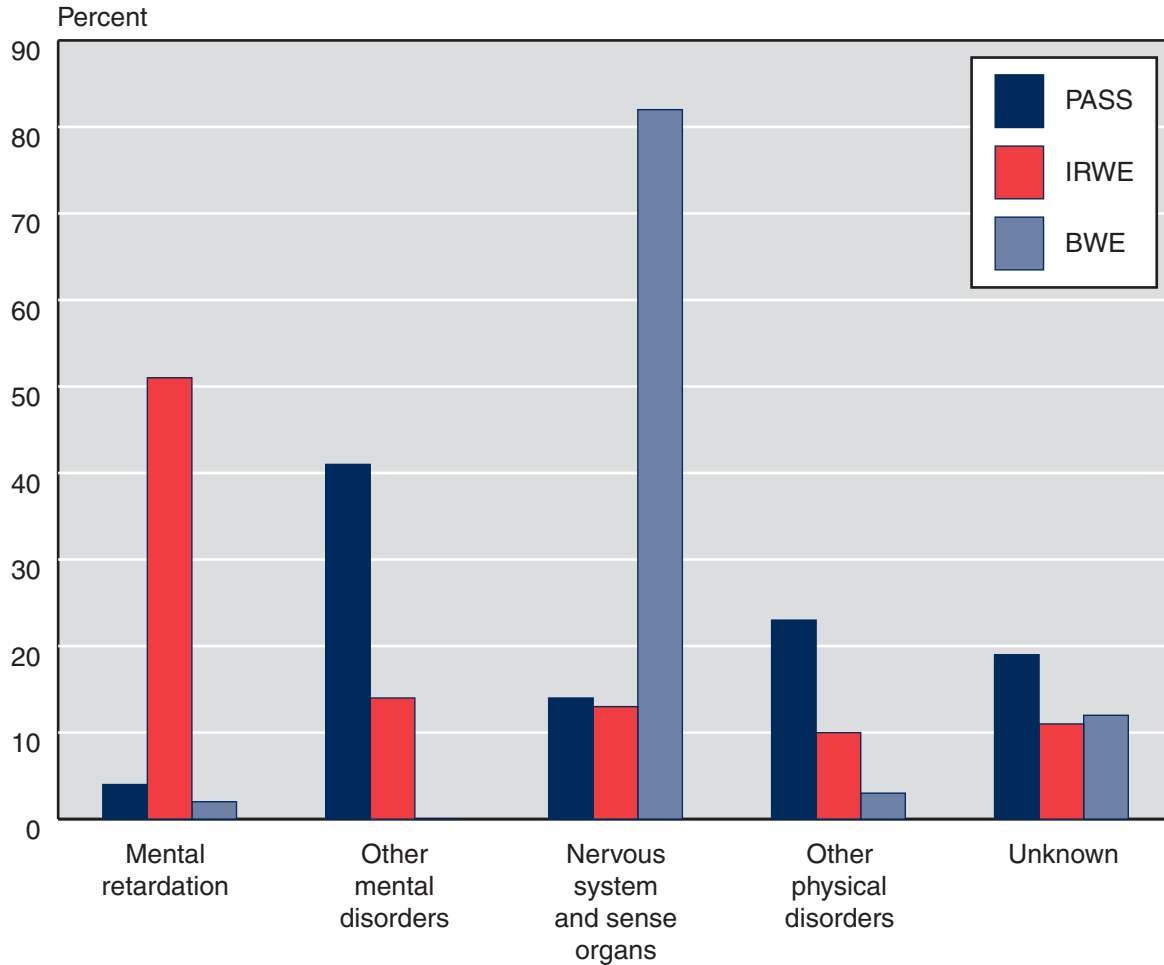
Recipients with income excluded under plans to achieve self-support (PASS), impairment-related work expenses (IRWE), or blind work expenses (BWE) were similar in age to all working recipients (Chart 3). PASS participants were somewhat older—53 percent were aged 40 or older, compared with 35 percent of those with IRWE and 44 percent of those with BWE.



SOURCE: Table 15.

Chart 10.
Percentage distribution, by diagnostic group and provision, December 2006

The most frequently identified diagnosis varied among recipients who had income excluded under plans to achieve self-support (PASS), impairment-related work expenses (IRWE), or blind work expenses (BWE). Over half of the recipients who had some income excluded under IRWE were mentally retarded, and 41 percent of those with a PASS had other mental disorders. Over four-fifths of those with BWE had a nervous system disorder.



SOURCE: Table 16.

Table 14.
Number, by state or other area and provision, December 2006

State or area	Plans to achieve self-support (PASS) ^a	Impairment-related work expenses (IRWE)	Blind work expenses (BWE)
All areas	1,583	5,650	2,370
Alabama	23	143	28
Alaska	4	b	b
Arizona	7	59	27
Arkansas	16	48	20
California	371	366	391
Colorado	13	27	24
Connecticut	9	108	32
Delaware	0	27	9
District of Columbia	b	0	3
Florida	39	306	82
Georgia	26	194	48
Hawaii	5	7	8
Idaho	23	8	4
Illinois	43	191	57
Indiana	30	94	38
Iowa	53	50	47
Kansas	25	286	30
Kentucky	64	81	34
Louisiana	b	96	34
Maine	46	27	10
Maryland	18	161	34
Massachusetts	100	147	211
Michigan	43	95	78
Minnesota	52	113	44
Mississippi	7	36	22
Missouri	34	104	29
Montana	17	9	9
Nebraska	17	19	8
Nevada	b	19	13
New Hampshire	12	19	6
New Jersey	3	201	44
New Mexico	0	56	15
New York	86	477	185
North Carolina	73	293	93
North Dakota	b	7	3
Ohio	26	106	80
Oklahoma	6	65	21
Oregon	31	36	20
Pennsylvania	13	242	88
Rhode Island	10	10	8

(Continued)

Table 14.
Number, by state or other area and provision, December 2006—Continued

State or area	Plans to achieve self-support (PASS) ^a	Impairment-related work expenses (IRWE)	Blind work expenses (BWE)
South Carolina	20	60	31
South Dakota	7	12	6
Tennessee	20	101	36
Texas	22	284	156
Utah	b	36	13
Vermont	30	9	4
Virginia	7	465	58
Washington	33	89	45
West Virginia	11	25	13
Wisconsin	78	234	64
Wyoming	b	b	3
Outlying area			
Northern Mariana Islands	b	b	b

SOURCE: Social Security Administration, Supplemental Security Record (Characteristic Extract Record format), 100 percent data.

a. Includes 435 persons with a PASS that excludes only resources.

b. Data are not shown to avoid disclosure of information for particular individuals.

CONTACT: Clark Pickett (410) 965-9016 or ssi.workers@ssa.gov.

Table 15.
Number, by selected characteristics and provision, December 2006

Characteristic	Plans to achieve self-support (PASS) ^a	Impairment-related work expenses (IRWE)	Blind work expenses (BWE)
Total	1,583	5,650	2,370
Age			
Under 18	1	4	4
18–21	69	276	84
22–29	308	1,813	579
30–39	364	1,608	678
40–49	461	1,102	536
50–59	313	601	364
60–64	57	145	67
65 or older	10	101	58
Sex			
Male	643	3,106	1,273
Female	940	2,544	1,097
Earned income^b			
Wages	393	5,556	2,296
Self-employment	101	117	91
Earnings (dollars)			
None	1,098	0	0
65 or less	33	469	150
66–99	9	227	78
100–199	32	798	229
200–299	26	696	188
300–399	40	663	154
400–499	36	493	117
500–599	40	497	116
600–699	44	364	99
700–799	45	269	103
800–899	29	231	94
900–999	23	141	86
1,000 or more	128	802	956
Unearned income^b			
None	317	2,367	1,217
Social Security	1,228	2,978	1,023
Other pensions	18	30	6
Income based on need	0	1	0
Asset income	58	345	153
Other	54	195	63

SOURCE: Social Security Administration, Supplemental Security Record (Characteristic Extract Record format), 100 percent data.

a. Includes 435 persons with a PASS that excludes only resources.

b. The sum of the entries may be greater than the total because some recipients may receive more than one type of earned or unearned income or both earned and unearned income.

CONTACT: Clark Pickett (410) 965-9016 or ssi.workers@ssa.gov.

Table 16.
Percentage distribution, by diagnostic group and provision, December 2006

Diagnostic group	All blind and disabled recipients	Plans to achieve self-support (PASS) ^a	Impairment-related work expenses (IRWE)	Blind work expenses (BWE)
Total				
Number	4,152,130	1,583	5,650	2,370
Percent	100.0	100.0	100.0	100.0
Congenital anomalies	0.7	0.9	2.8	1.0
Endocrine, nutritional, and metabolic diseases	3.4	1.7	0.5	0.3
Infectious and parasitic diseases	1.6	1.9	0.7	0.1
Injuries	2.6	5.9	1.8	0.1
Mental disorders				
Retardation	21.6	3.9	51.5	2.4
Schizophrenia	9.7	9.7	3.5	0
Other	26.8	31.0	10.8	0.4
Neoplasms	1.2	0.8	0.4	0.2
Diseases of the—				
Blood and blood-forming organs	0.4	0.6	0.1	0
Circulatory system	4.4	1.5	0.8	1.2
Digestive system	0.9	0.6	0.2	0.1
Genitourinary system	1.0	0.8	0.3	0.1
Musculoskeletal system and connective tissue	10.3	7.8	1.5	0.1
Nervous system and sense organs ^b	7.8	13.8	13.2	81.9
Respiratory system	2.0	0.5	0.4	0
Skin and subcutaneous tissue	0.2	0	0	0
Other	0.2	0.3	0.4	0.1
Unknown	5.2	18.5	10.9	12.2

SOURCE: Social Security Administration, Supplemental Security Record (Characteristic Extract Record format), 100 percent data.

a. Includes 435 persons with a PASS that excludes only resources.

b. Most disabled recipients classified as blind are included in this category. A few blind recipients with a primary impairment other than diseases of the eye are coded in other categories. Also, a few recipients are classified with diseases of the eye, but their impairment does not meet the definition of blindness.

CONTACT: Clark Pickett (410) 965-9016 or ssi.workers@ssa.gov.

Table 17.
Percentage distribution of persons with income excluded, by amount excluded and provision,
December 2006

Amount excluded (dollars)	Plans to achieve self-support (PASS) ^a	Impairment-related work expenses (IRWE)	Blind work expenses (BWE)
Total			
Number	1,148	5,650	2,370
Percent	100.0	100.0	100.0
Under 25	0.3	18.5	18.7
25–49	1.1	24.1	10.8
50–99	1.1	31.8	14.8
100–199	5.9	15.6	16.6
200–299	7.3	4.8	11.9
300–499	20.7	3.2	13.0
500–999	49.7	1.8	11.0
1,000 or more	13.8	0.3	3.1

SOURCE: Social Security Administration, Supplemental Security Record (Characteristic Extract Record format), 100 percent data.

a. Data do not include plans to achieve self-support that exclude only resources.

CONTACT: Clark Pickett (410) 965-9016 or ssi.workers@ssa.gov.