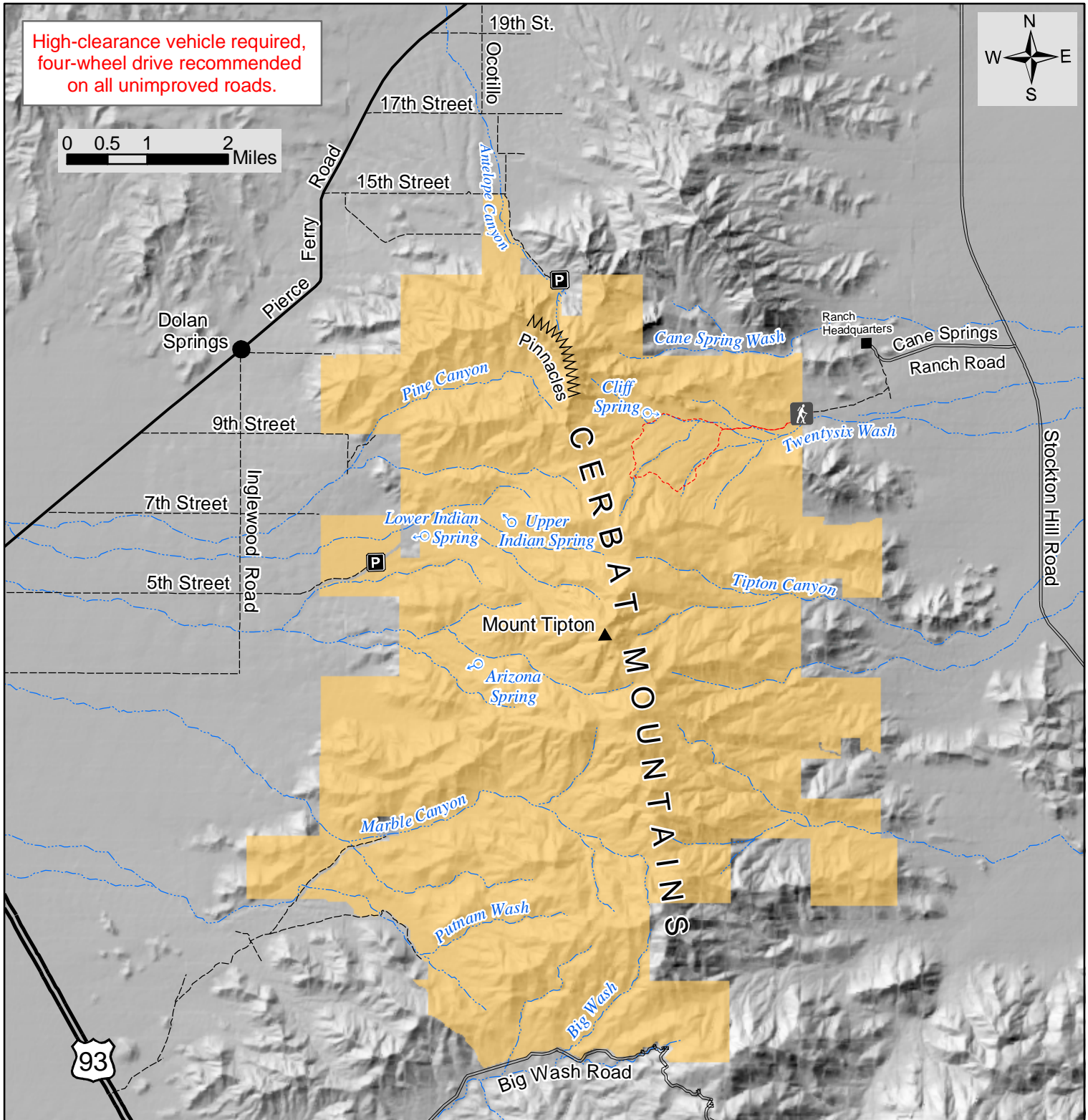


High-clearance vehicle required,  
four-wheel drive recommended  
on all unimproved roads.



**Legend**

- Parking Area
- Trailhead
- Twentysix Wash Trail
- Unimproved roads (jeep trails)
- Improved dirt roads
- Paved roads
- Mount Tipton Wilderness
- Major washes

**MOUNT TIPTON WILDERNESS  
ACCESS MAP**

Map prepared by the  
Bureau of Land Management  
Kingman Field Office  
February 2005



No warranty is made by the Bureau of Land Management  
for use of the data for purposes not intended  
by BLM. Map is for illustrative purposes only.