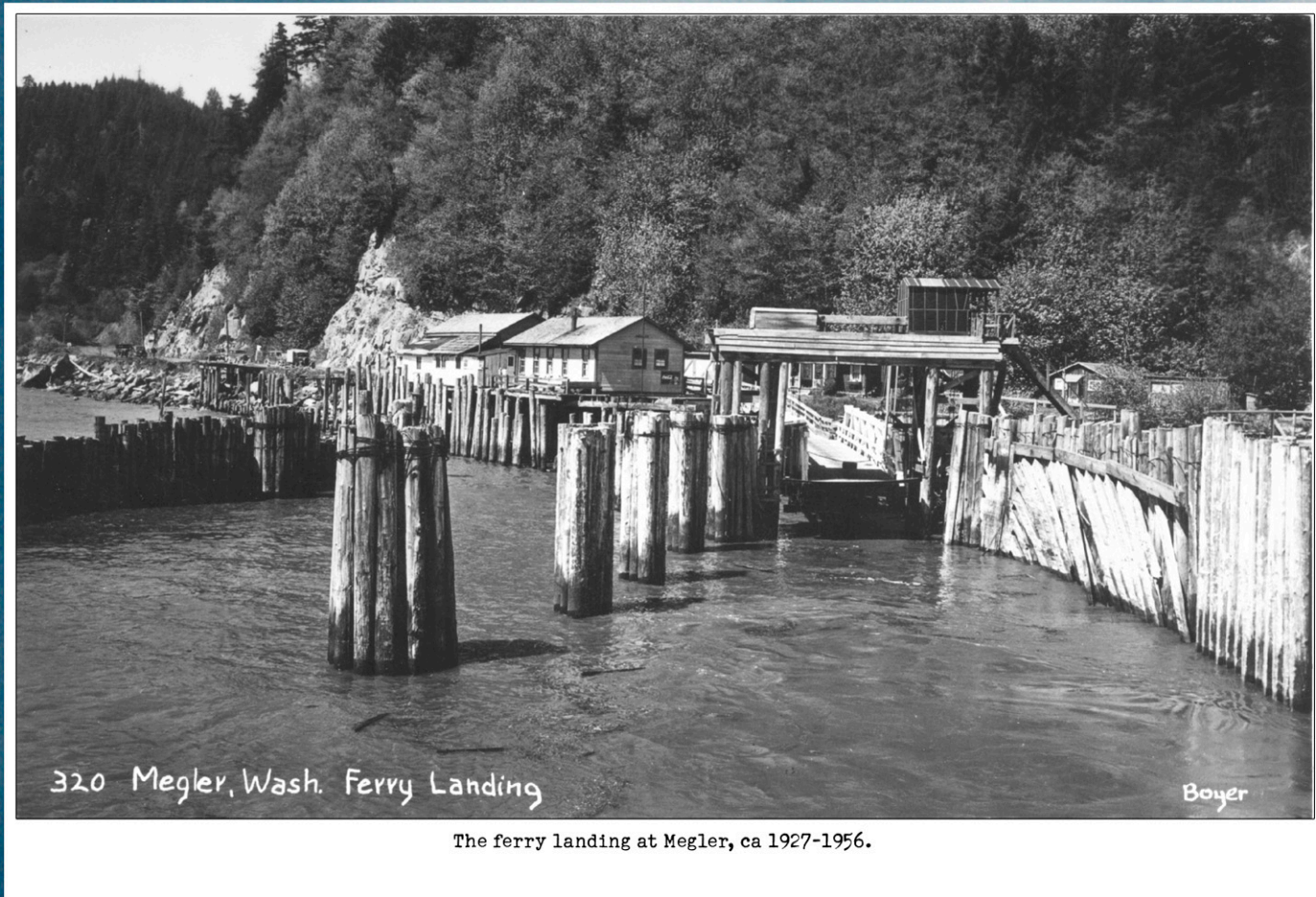


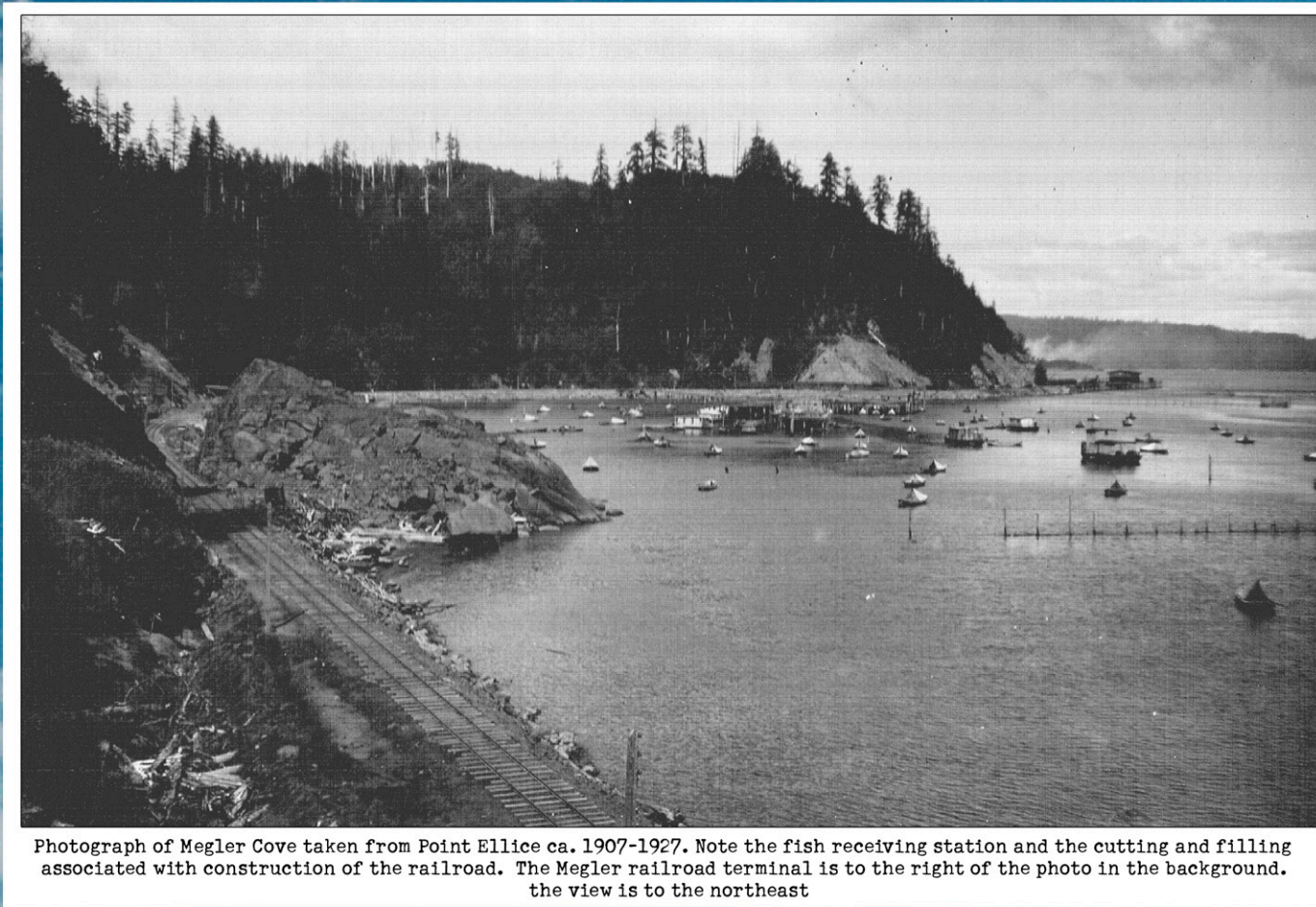
Transportation Uses of the Dismal Nitch Site Over Time



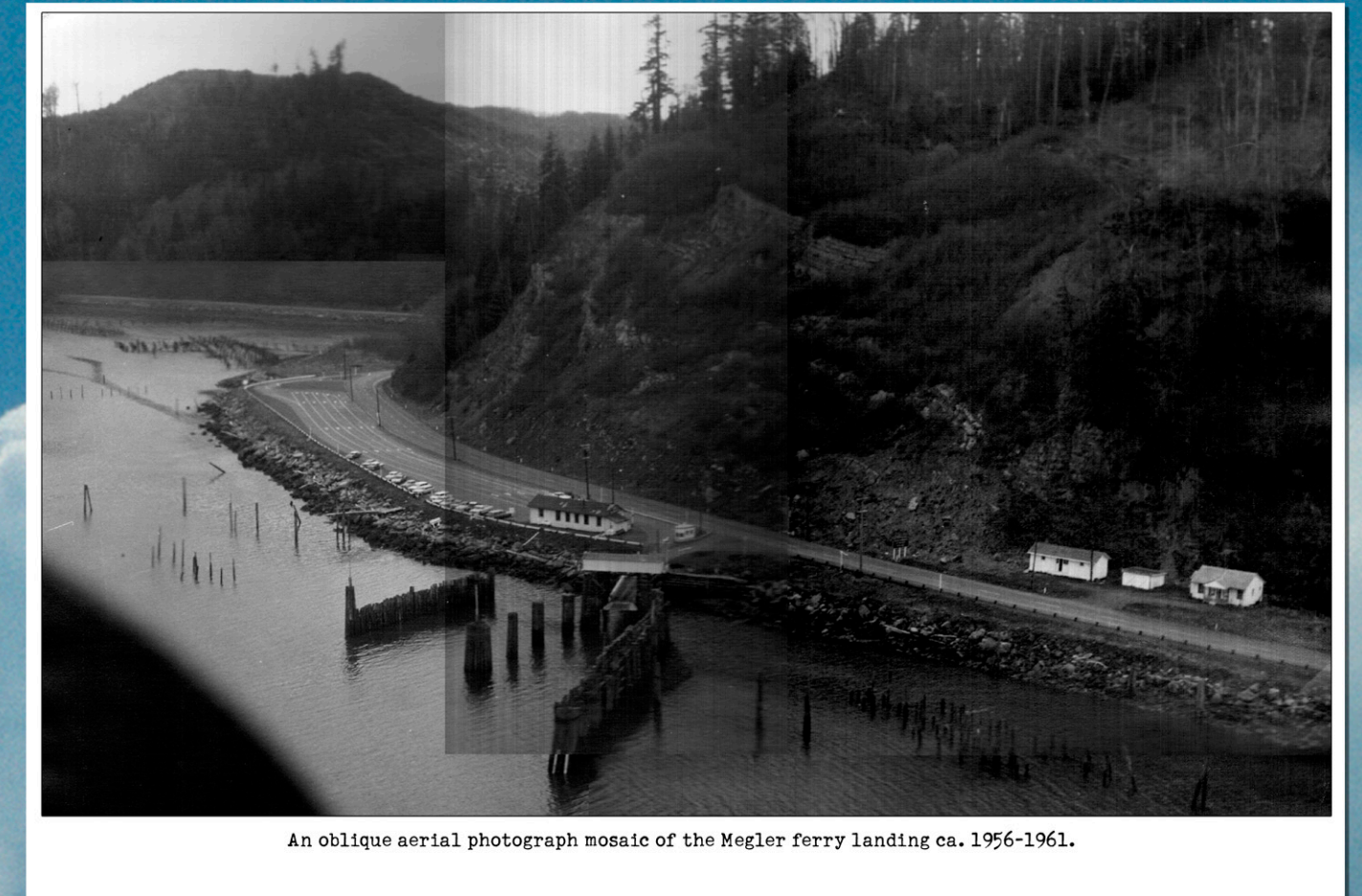
320 Megler, Wash. Ferry Landing

Boyer

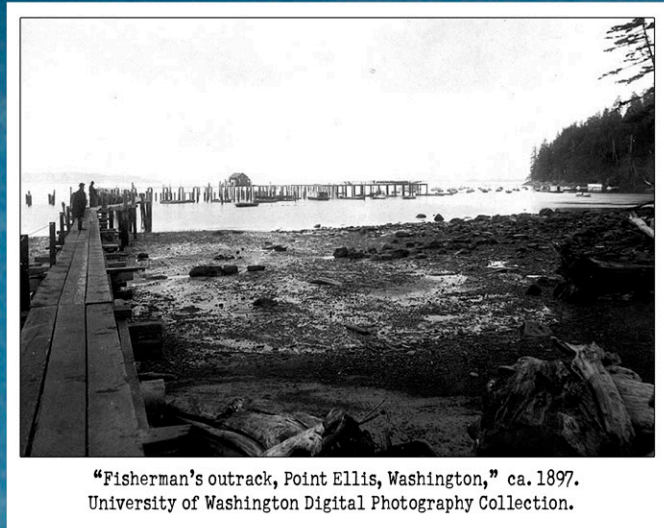
The ferry landing at Megler, ca 1927-1956.



Photograph of Megler Cove taken from Point Ellise ca. 1907-1927. Note the fish receiving station and the cutting and filling associated with construction of the railroad. The Megler railroad terminal is to the right of the photo in the background. The view is to the northeast



An oblique aerial photograph mosaic of the Megler ferry landing ca. 1956-1961.



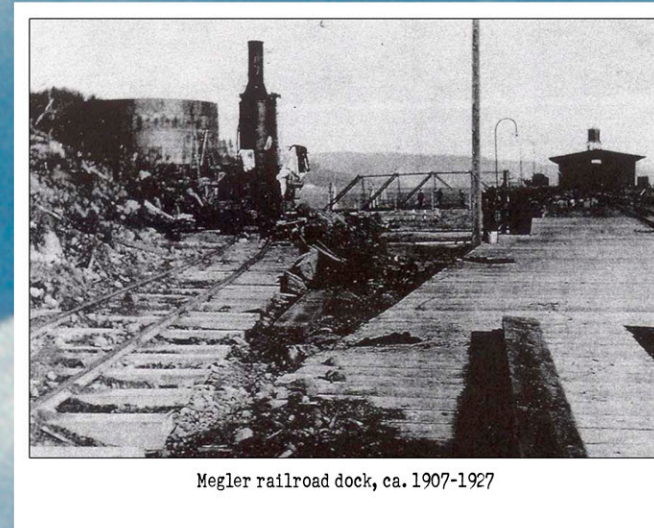
"Fisherman's outrack, Point Ellis, Washington," ca. 1897. University of Washington Digital Photography Collection.



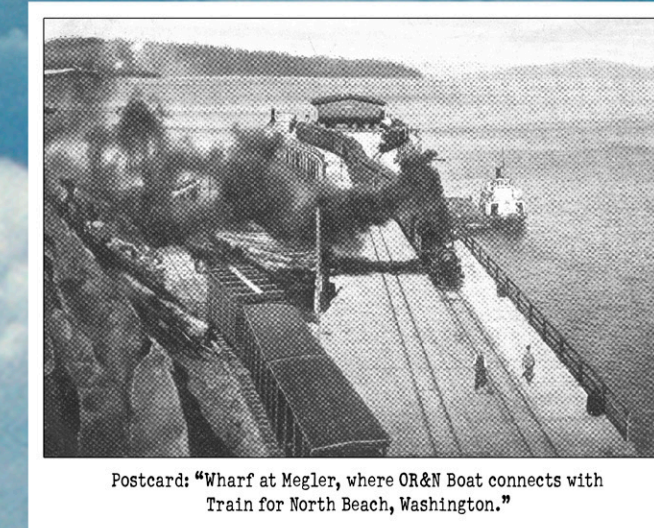
Remaining pilings from the outrack and runway, taken in September 2005. The view is to the southwest.



OWR&N steamer Z.J. Potter at Megler, ca. 1910 to 1916.



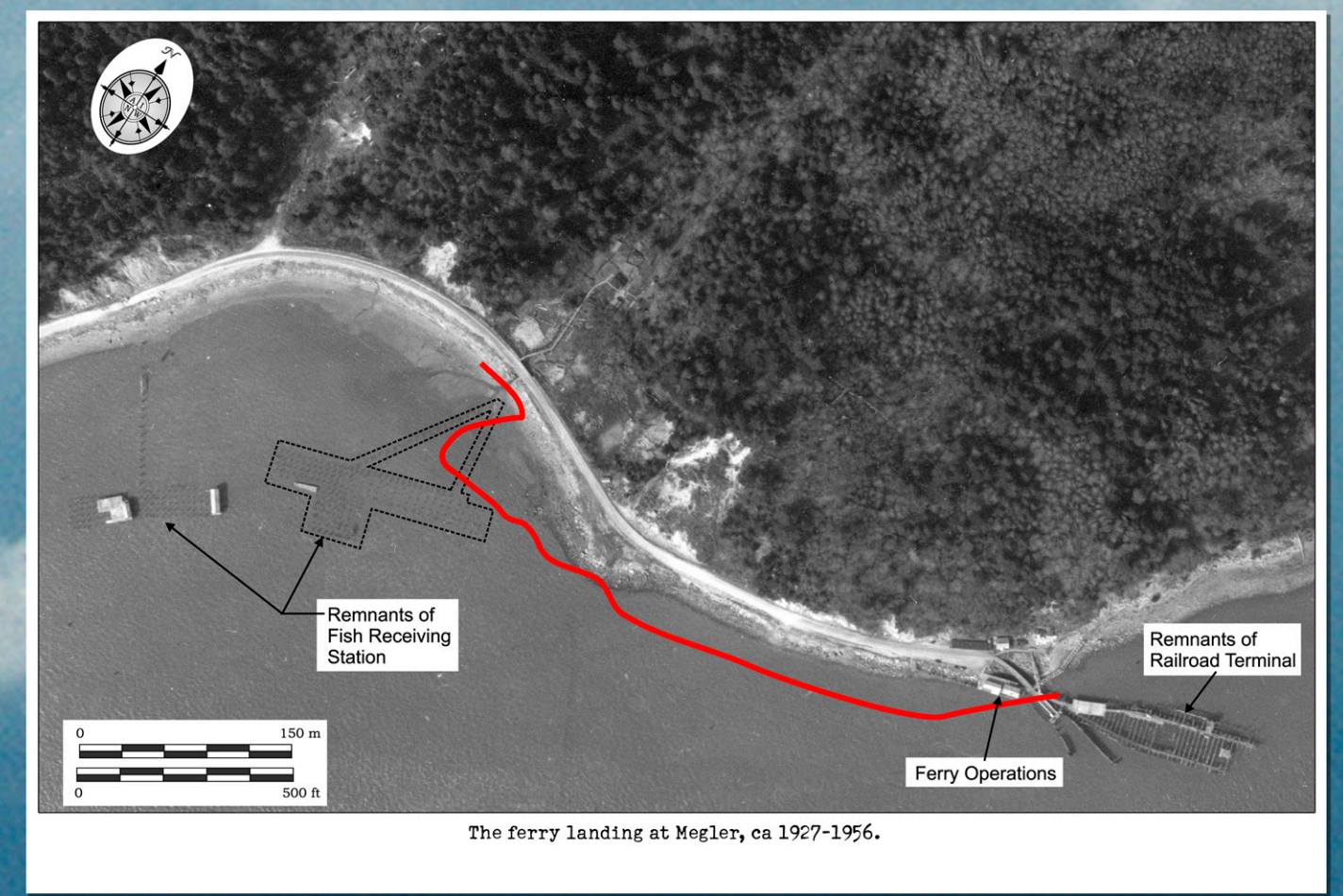
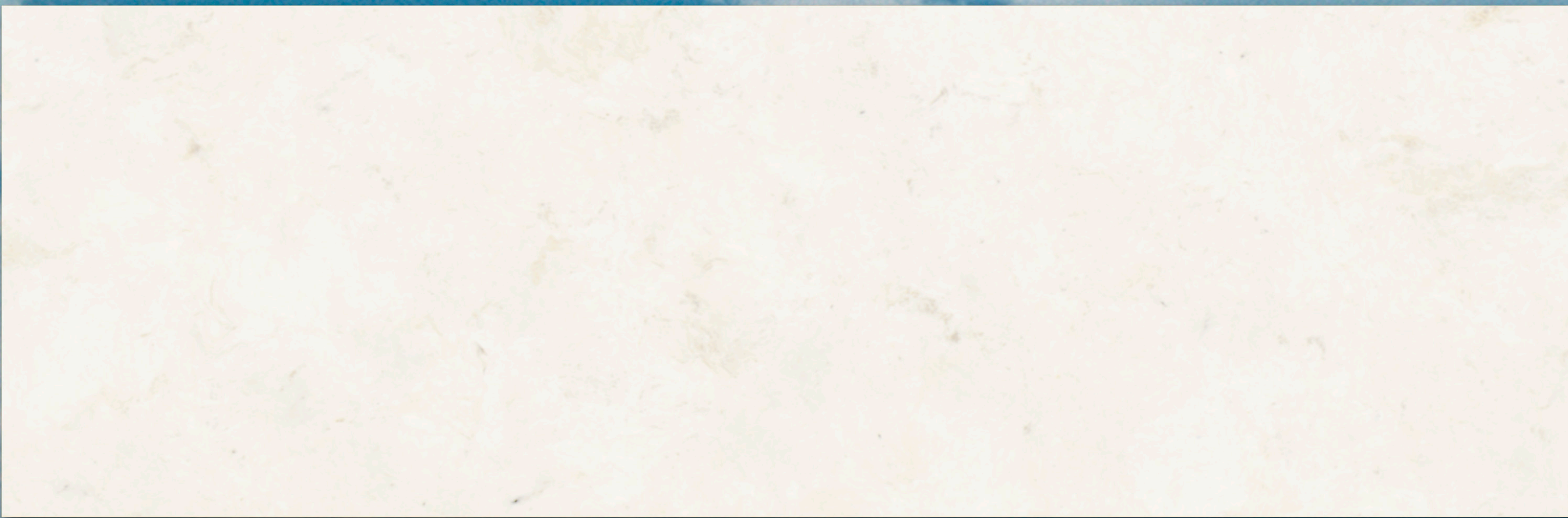
Megler railroad dock, ca. 1907-1927



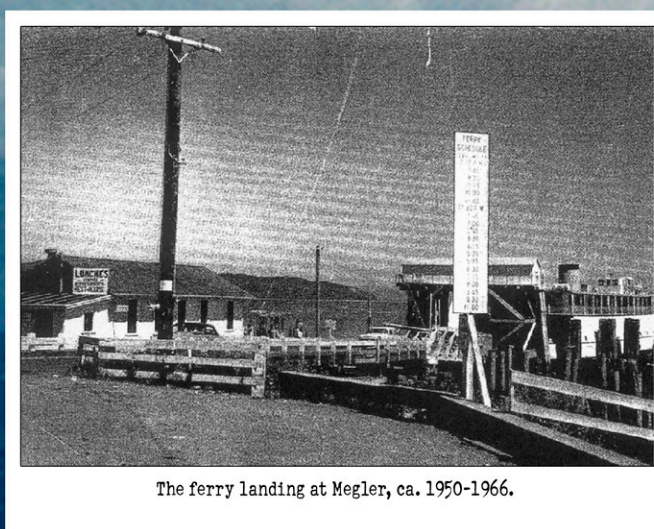
Postcard: "Wharf at Megler, where OWR&N Boat connects with Train for North Beach, Washington."



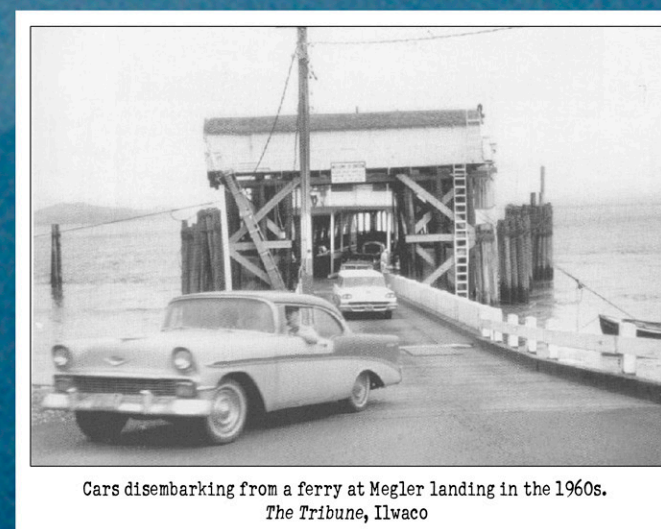
Engine turn table at Megler, ca. 1907-1930.



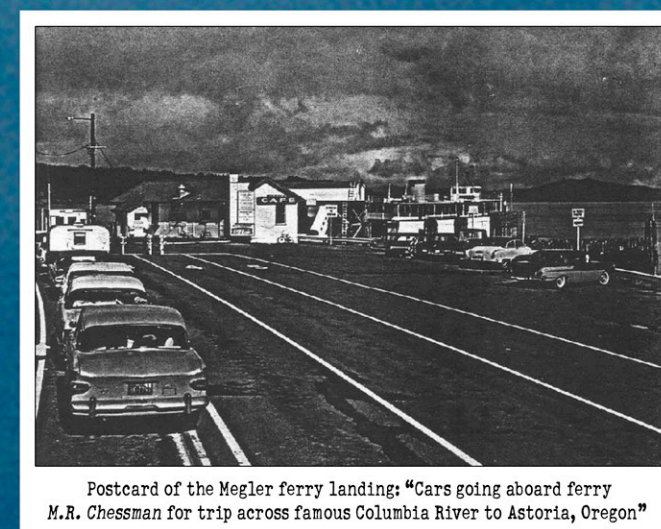
The ferry landing at Megler, ca 1927-1956.



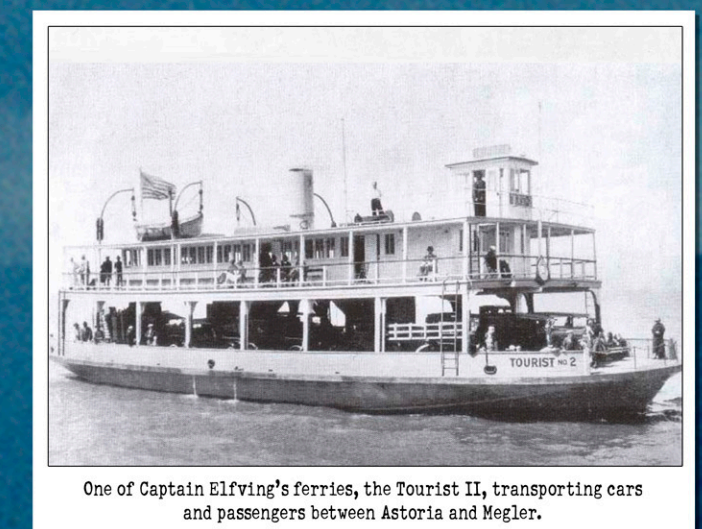
The ferry landing at Megler, ca. 1950-1966.



Cars disembarking from a ferry at Megler landing in the 1960s. The Tribune, Ilwaco



Postcard of the Megler ferry landing: "Cars going aboard ferry M.R. Chessman for trip across famous Columbia River to Astoria, Oregon"



One of Captain Elfving's ferries, the Tourist II, transporting cars and passengers between Astoria and Megler.