

463

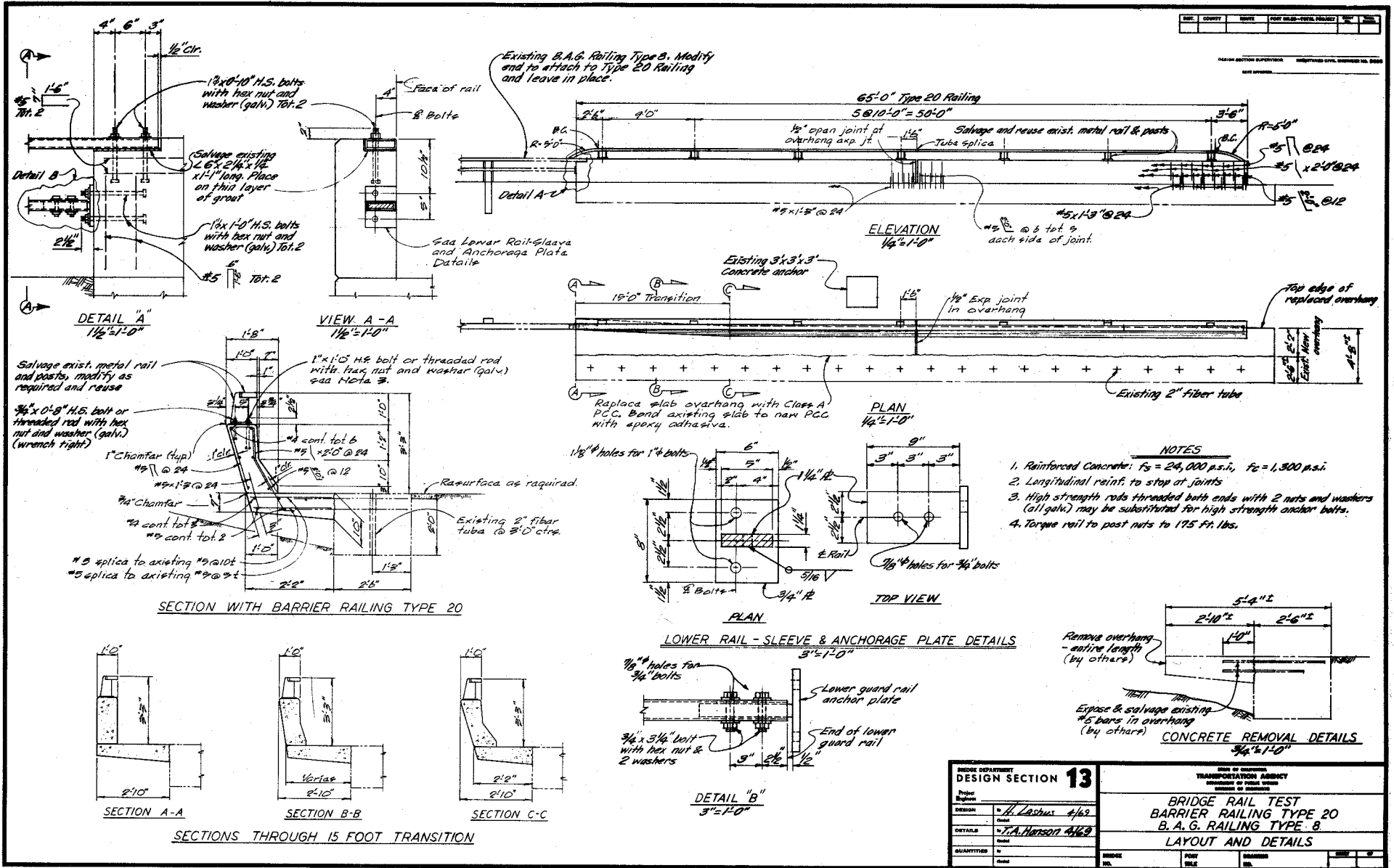
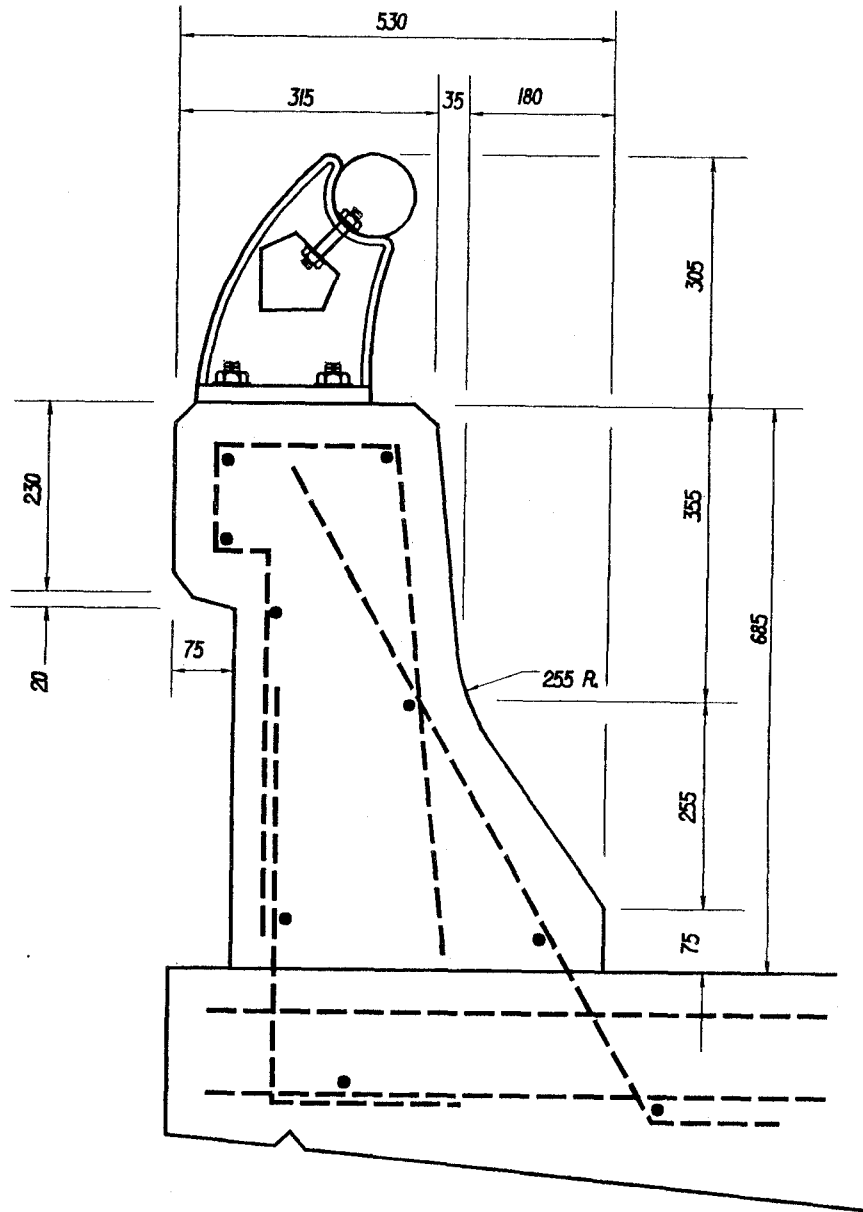


Figure B7.57. California Type 20 Bridge Railing (79,80,81).



All Dimensions Shown Are mm unless Otherwise Noted.

FIGURE D.8 Nevada Concrete Safety Shape

Rail Height	990 mm		
Test Vehicle	868-kg Car	2111-kg Car	18,160-kg Bus
Impact Speed km/h	98	99	95
Impact Angle Degrees	19.3	24.9	16.4

Figure B7.58. Nevada Safety Shape Parapet (6).

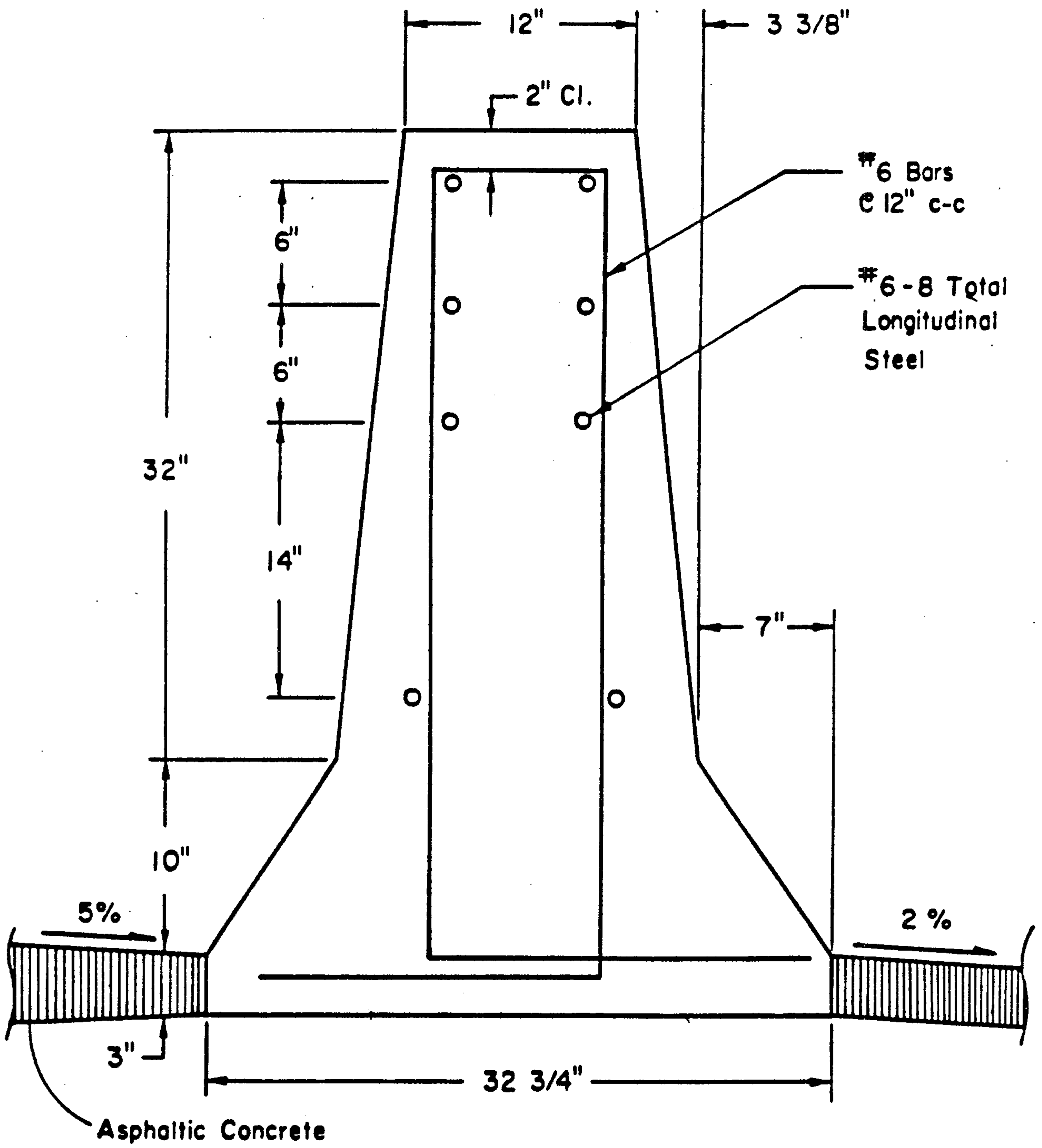
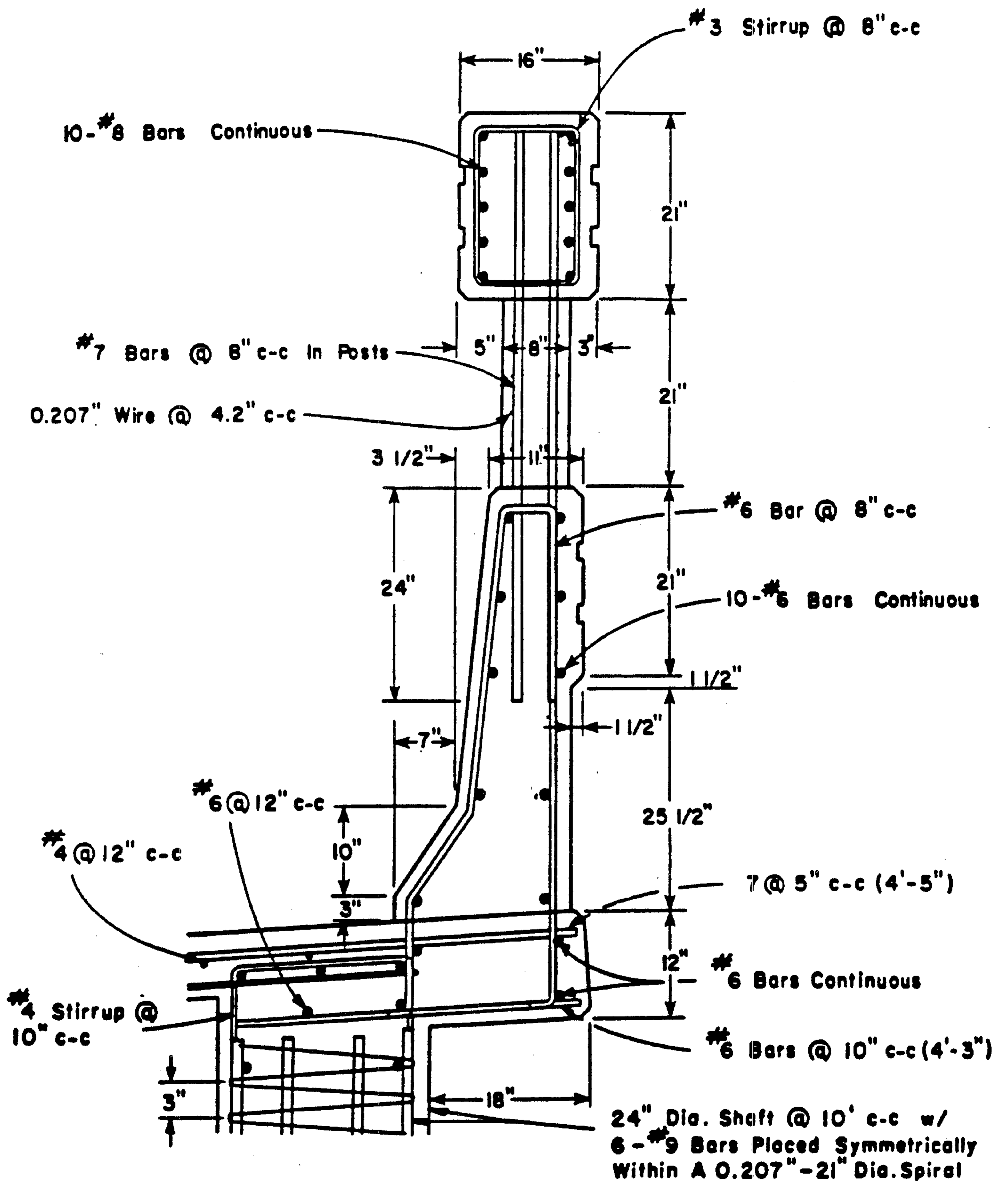


Figure B7.59. New Jersey Turnpike Heavy Vehicle Barrier (82,83,84,5).



Cross Section of the Modified T5 Bridge Rail and Modified Bridge Deck.

Figure B7.60. Texas Modified T5 Bridge Rail for Tanker-Type Trailers (85).

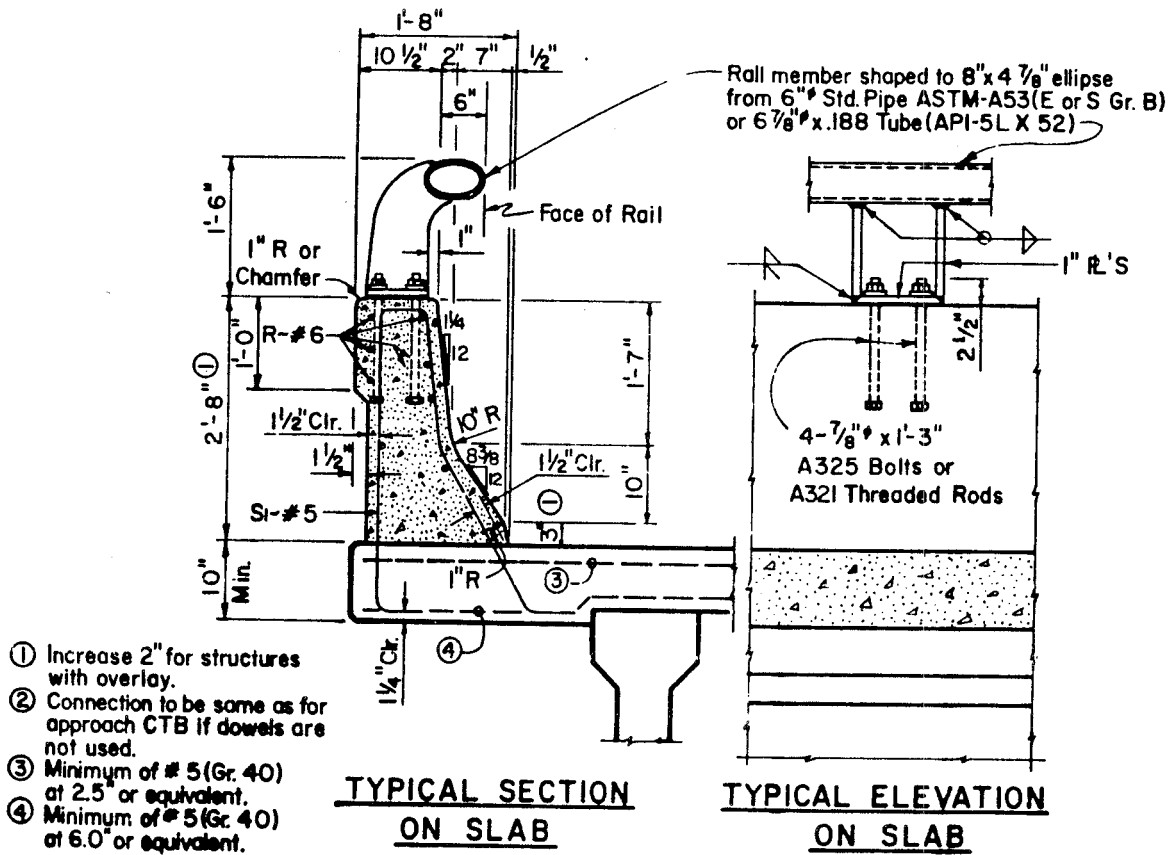
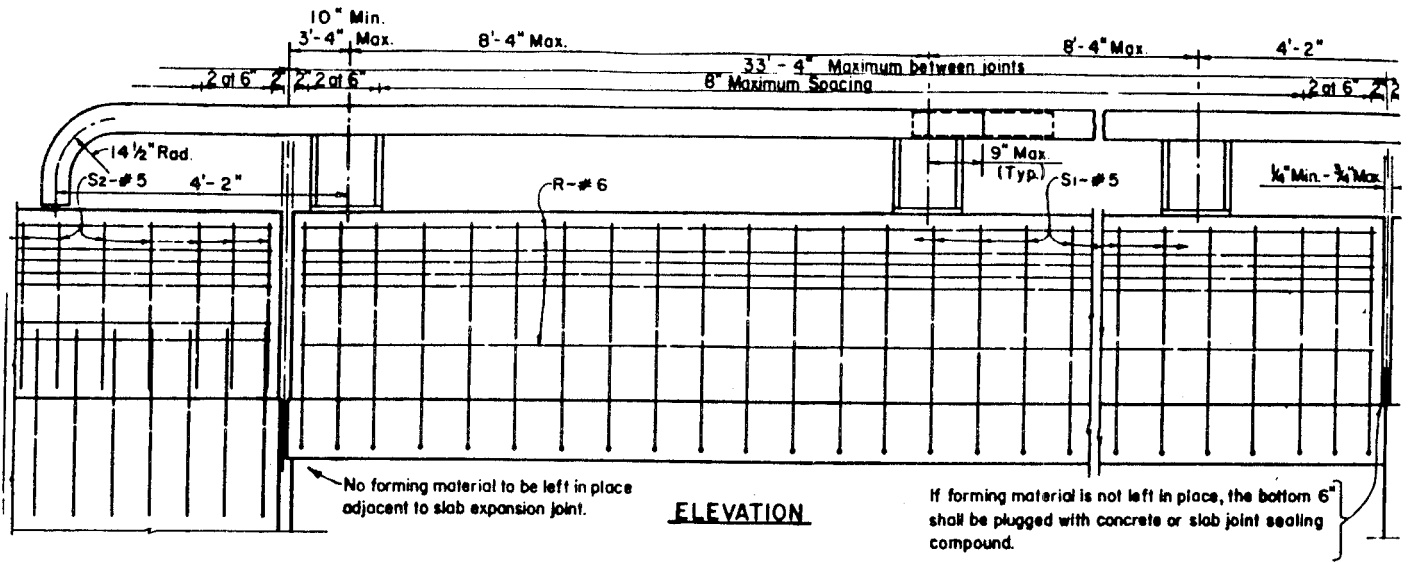


Figure B7.61. Texas Type HT Bridge Railing (86).