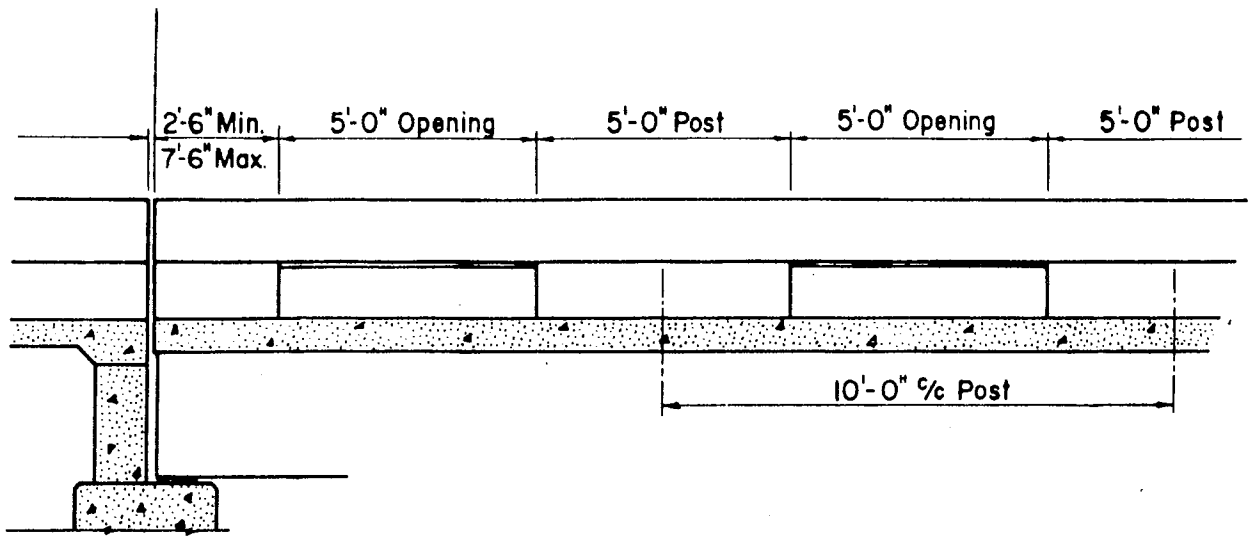


Figure B7.38. Oklahoma Modified TR-1 Bridge Railing (6,7).



ROADWAY ELEVATION OF RAIL

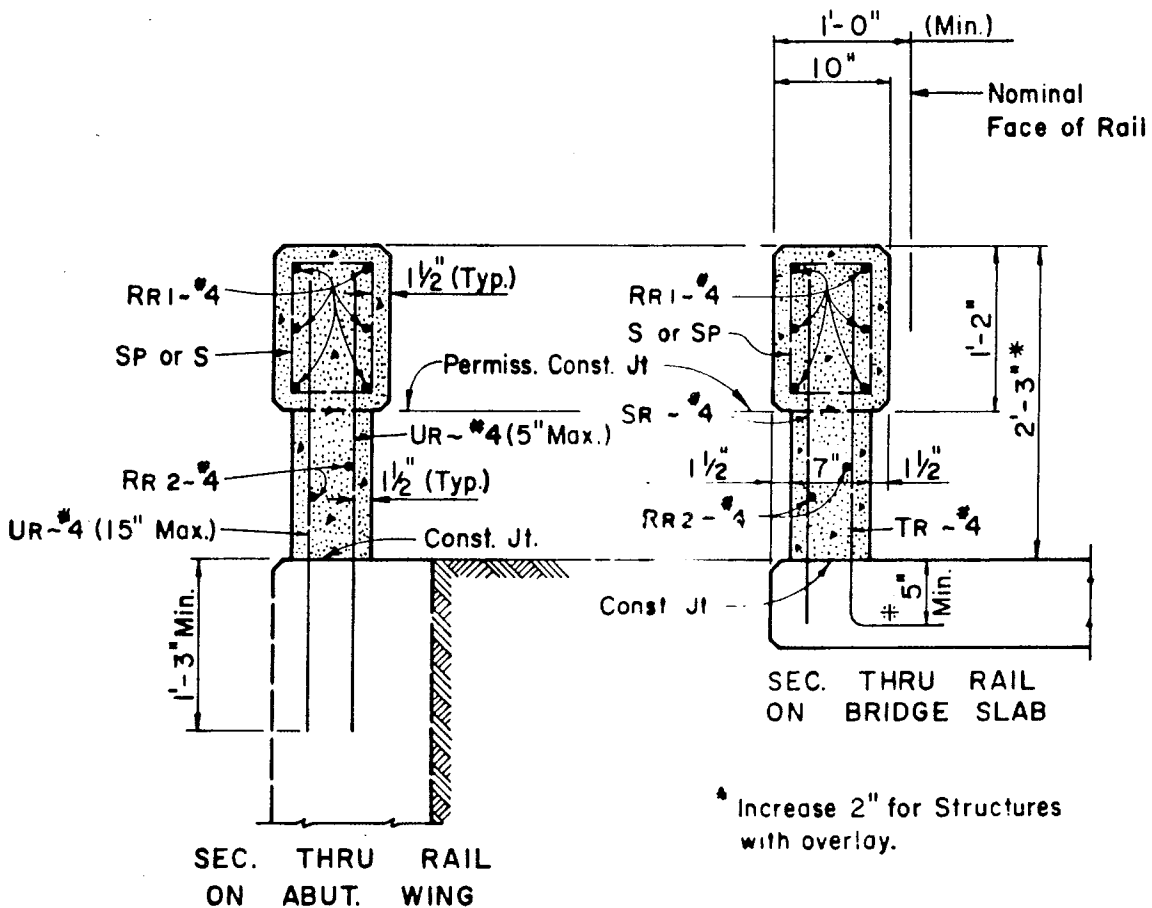


Figure B7.39. Texas T202 Concrete Beam and Post Bridge Railing (52,2).

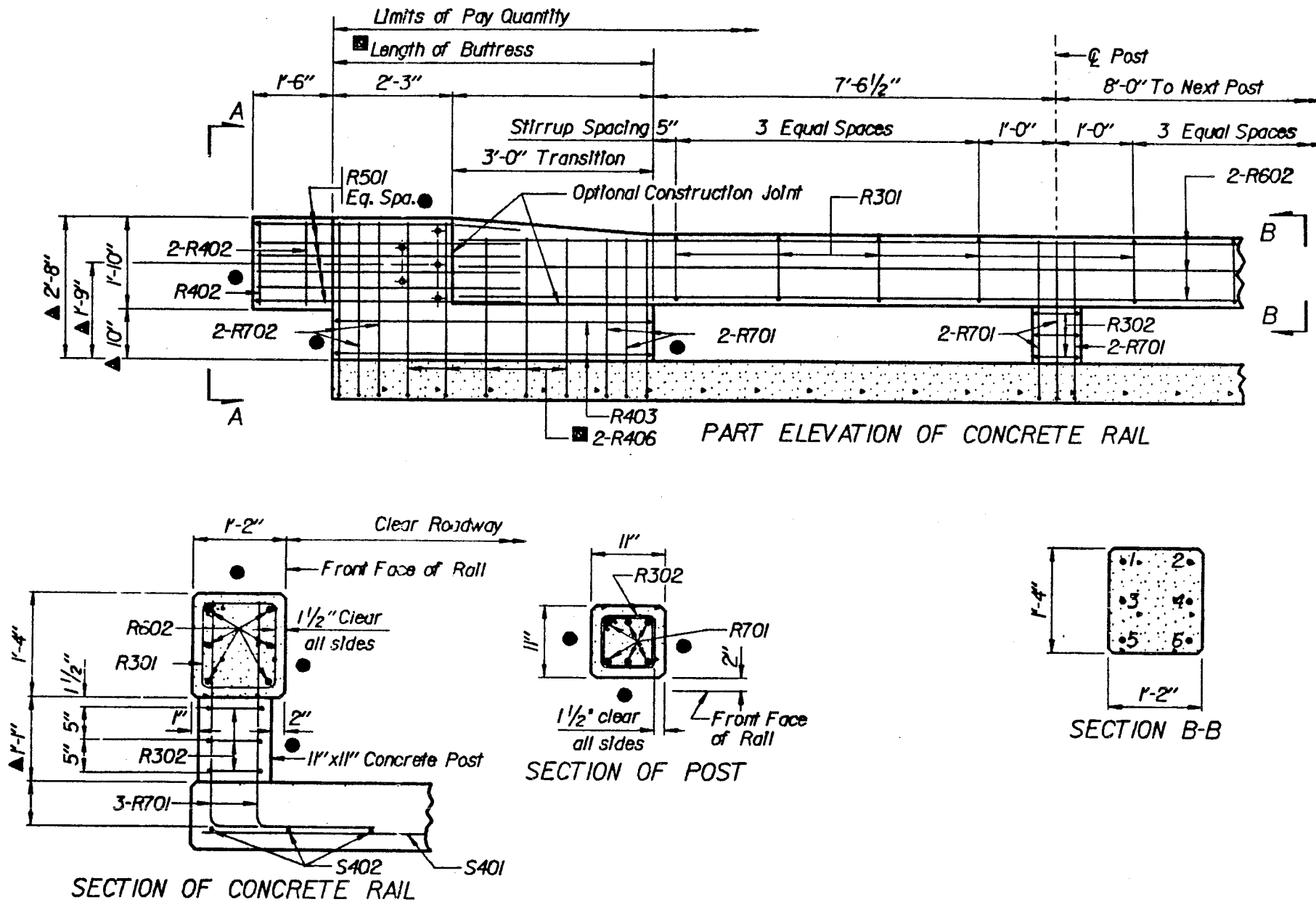


Figure B7.41. Nebraska Concrete Beam and Post Bridge Railing (54,55,56).

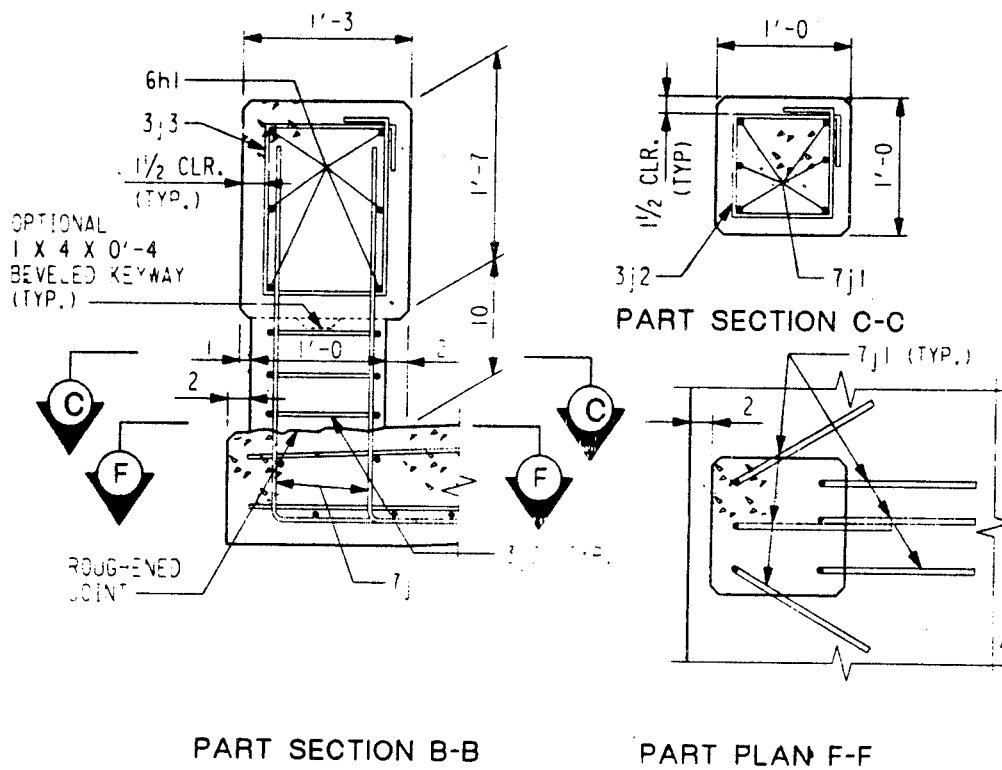
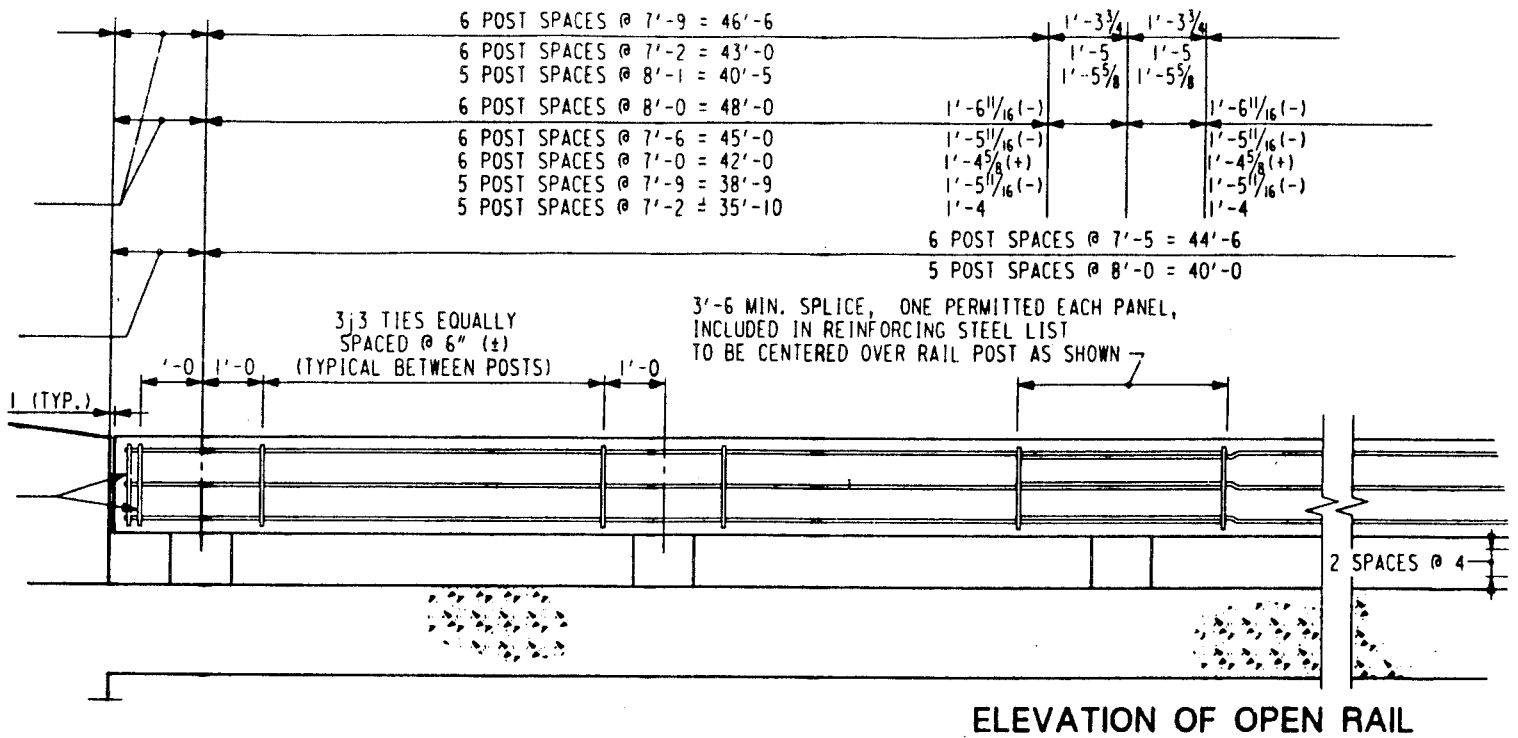


Figure B7.42. Iowa Concrete Beam and Post Bridge Railing (54).

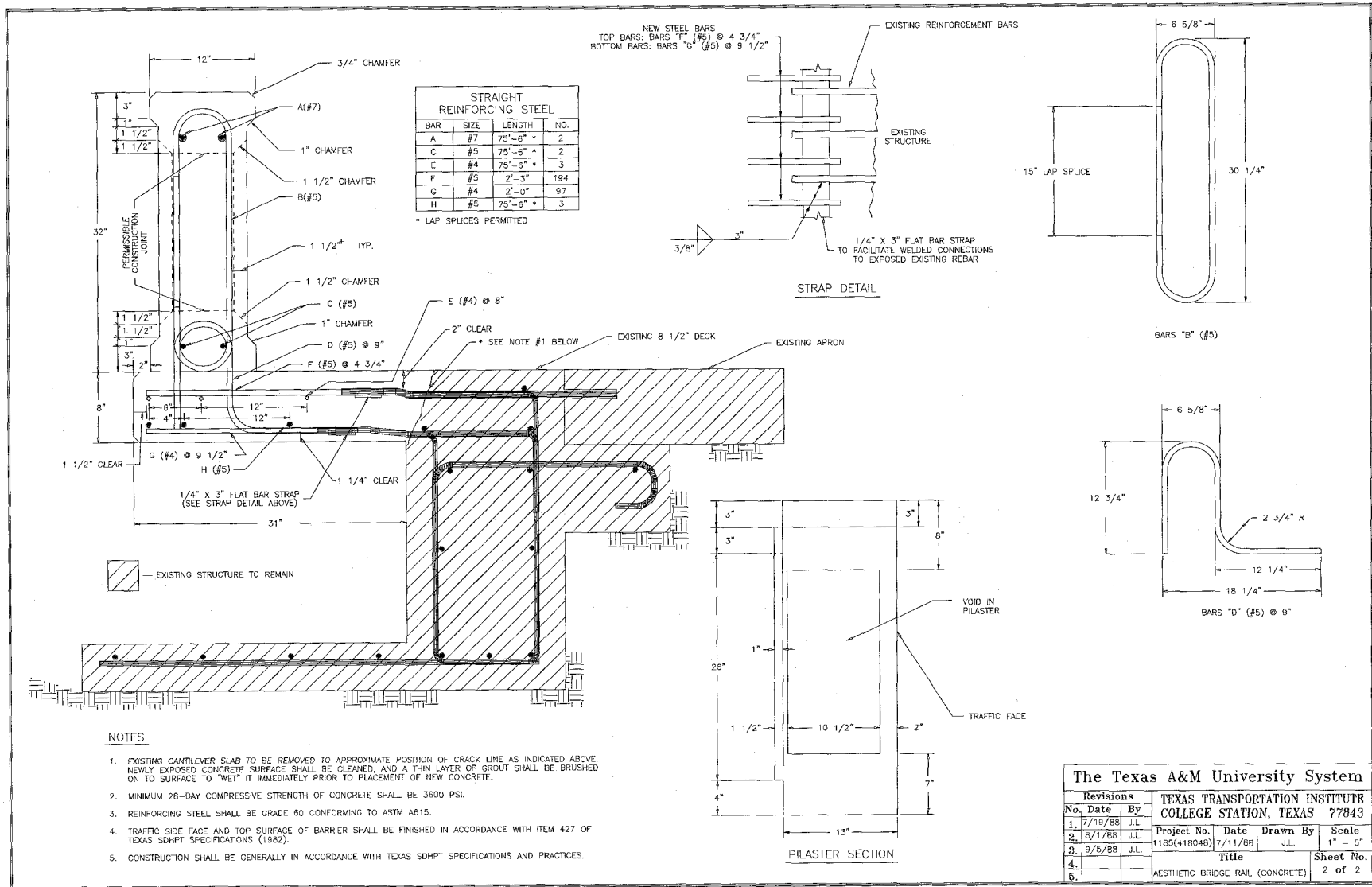
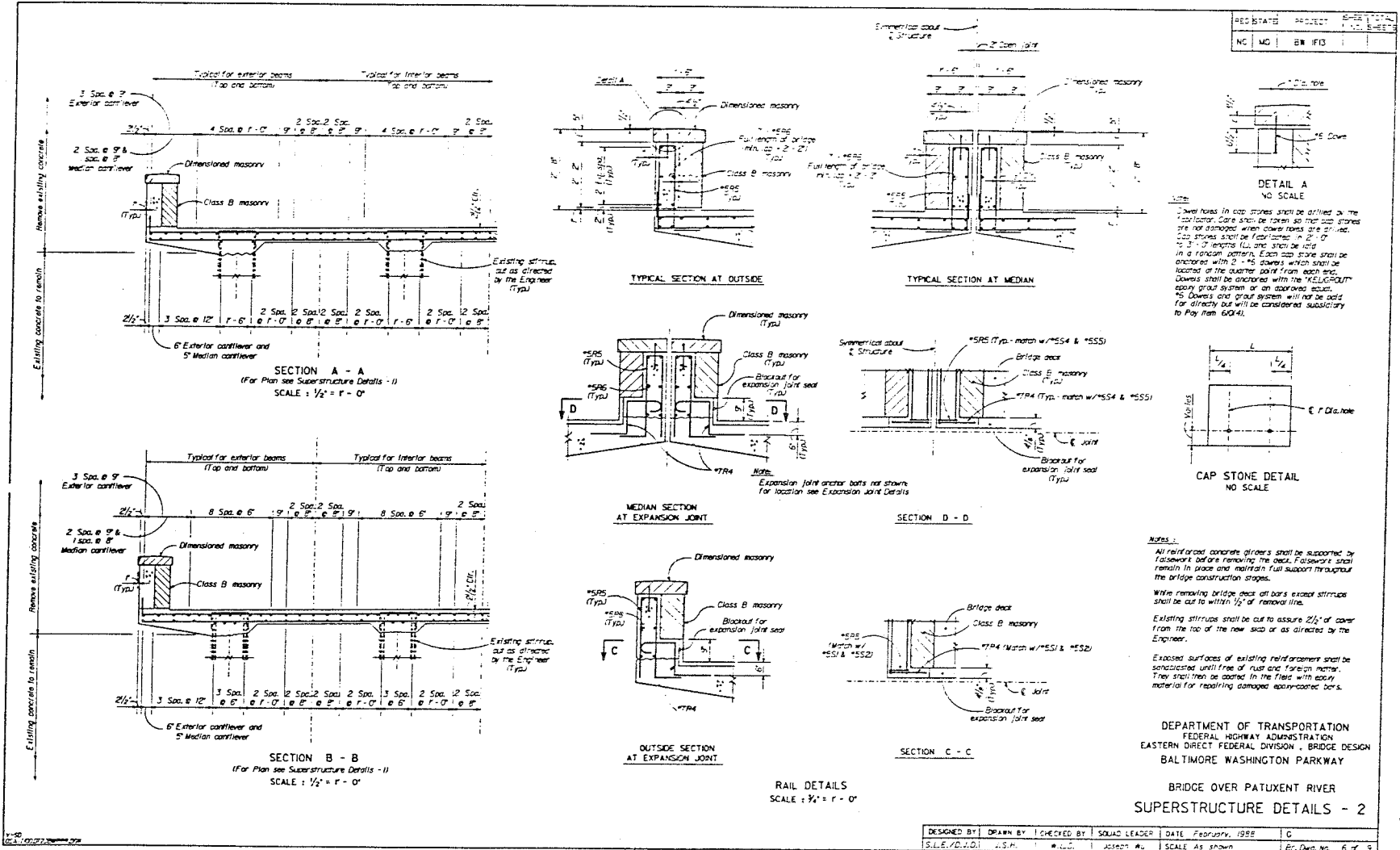


Figure B7.43. Texas T411 Aesthetic Concrete Baluster (57,58,61,59).

The Texas A&M University System				
Revisions				
No.	Date	By	Date	Drawn By
1.	7/19/88	J.L.		
2.	8/1/88	J.L.		
3.	9/5/88	J.L.		
4.				
5.				

TEXAS TRANSPORTATION INSTITUTE			
COLLEGE STATION, TEXAS 77843			
Project No.	Date	Drawn By	Scale
1185(418048)	7/11/88	J.L.	1" = 5"
Title			Sheet No.
AESTHETIC BRIDGE RAIL (CONCRETE)			2 of 2



1 in = 0.03 m 1 ft = 0.30 m

Figure B7.44. Baltimore-Washington (BW) Parkway, Aesthetic Smooth Stone Masonry-Faced Concrete (60).

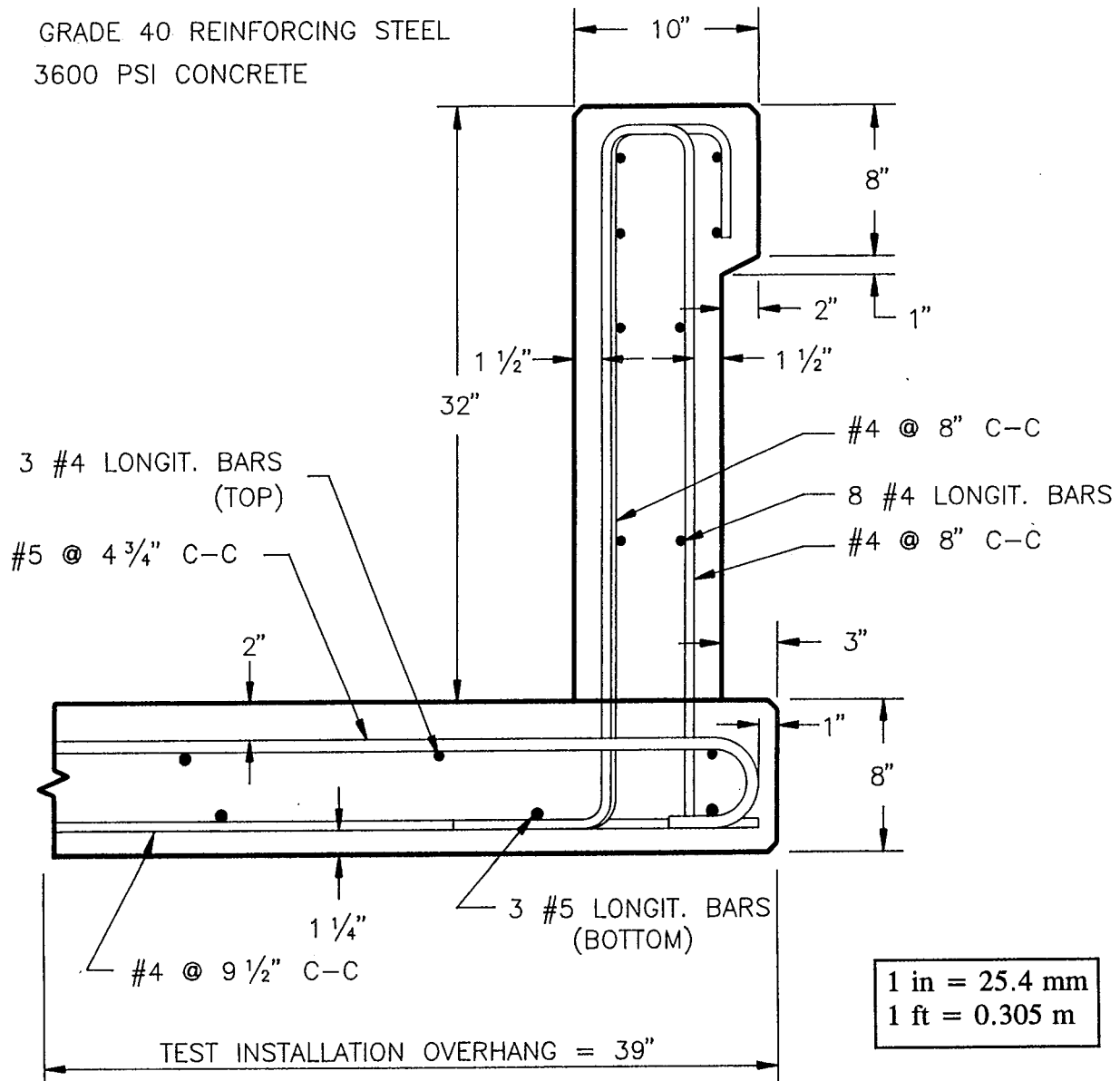


Figure B7.46. 32-in (813-mm) Vertical Concrete Parapet (8,62,63,48,15).

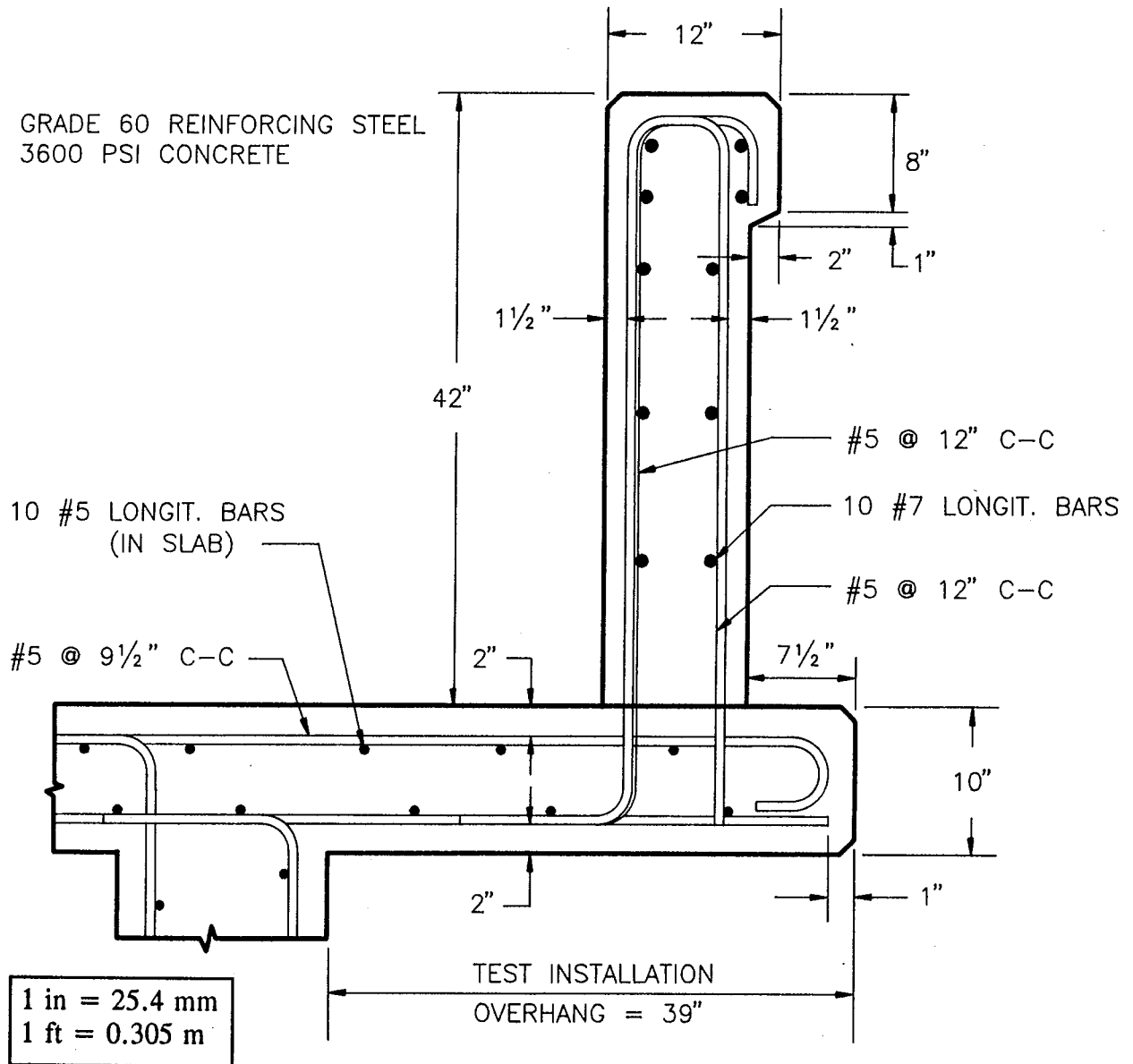


Figure B7.47. 42-in (1.07-m) Vertical Concrete Parapet (8,64,65,15).

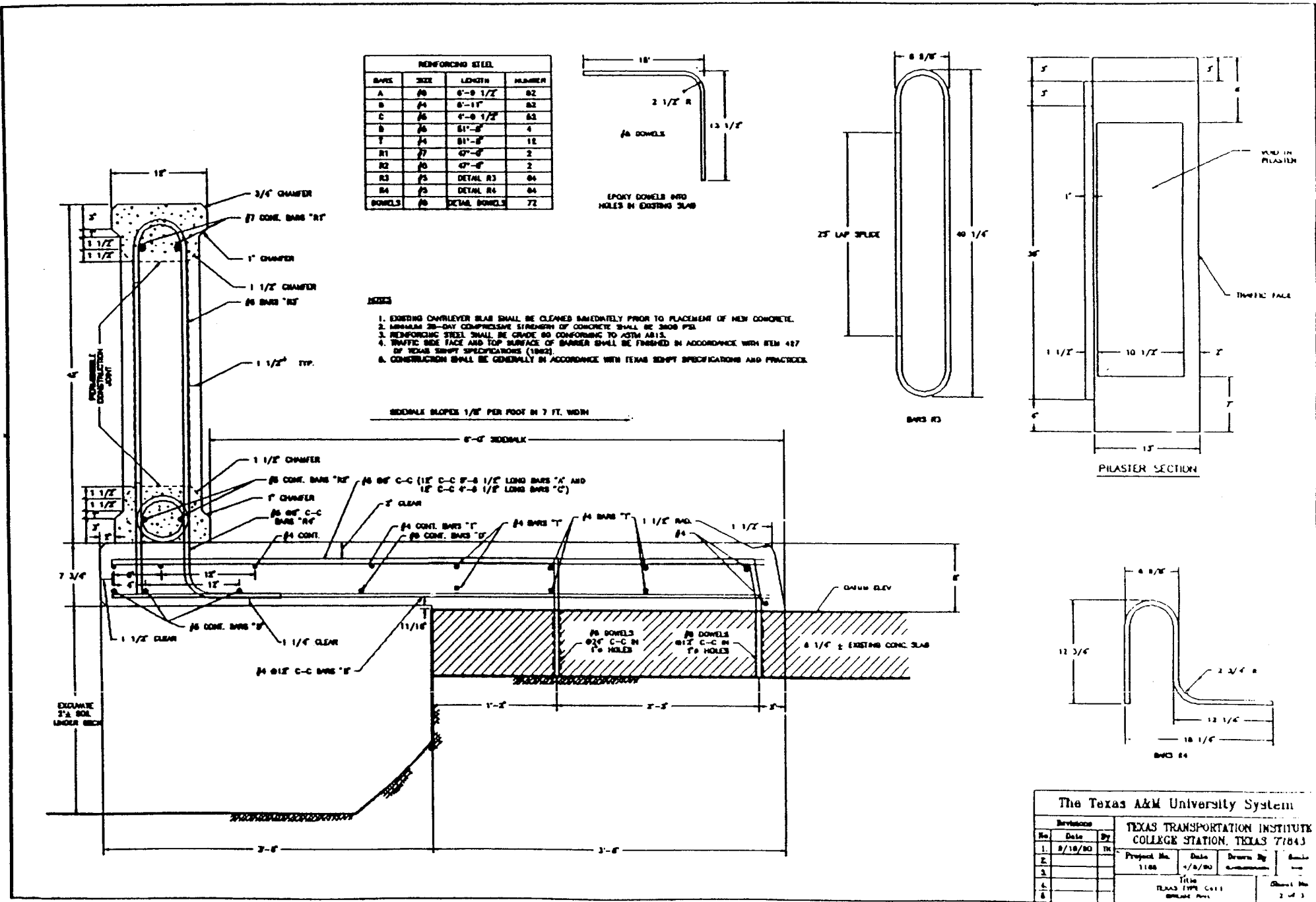


Figure B7.48. Texas C411, 42" Aesthetic Concrete Baluster Rail (58,66).

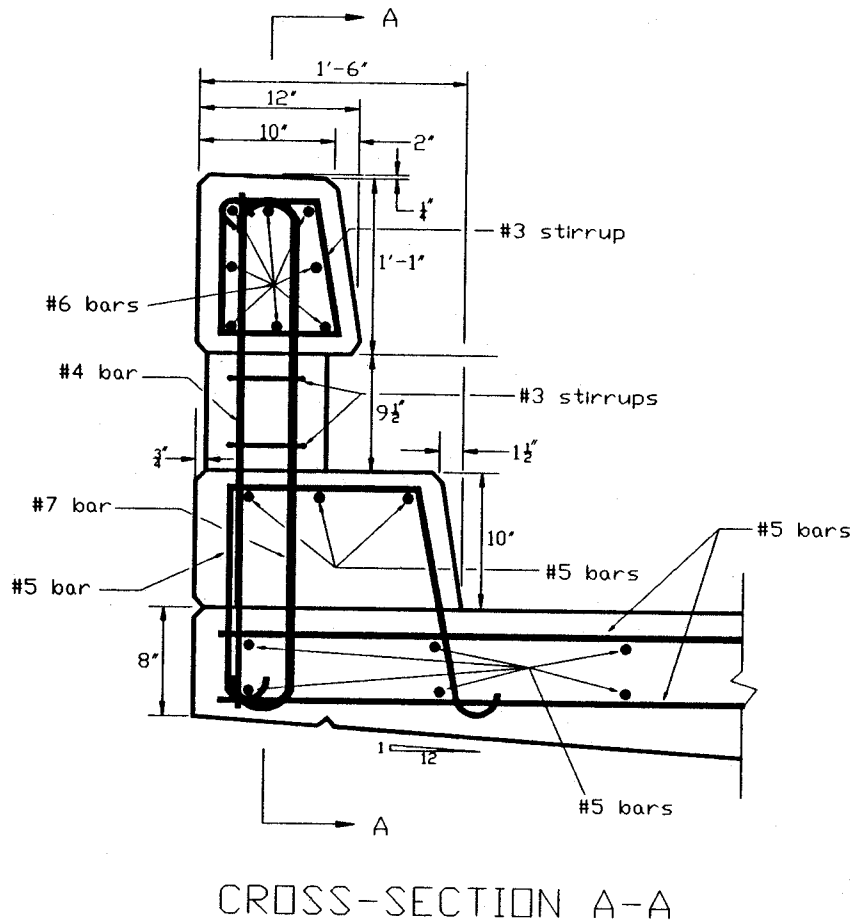
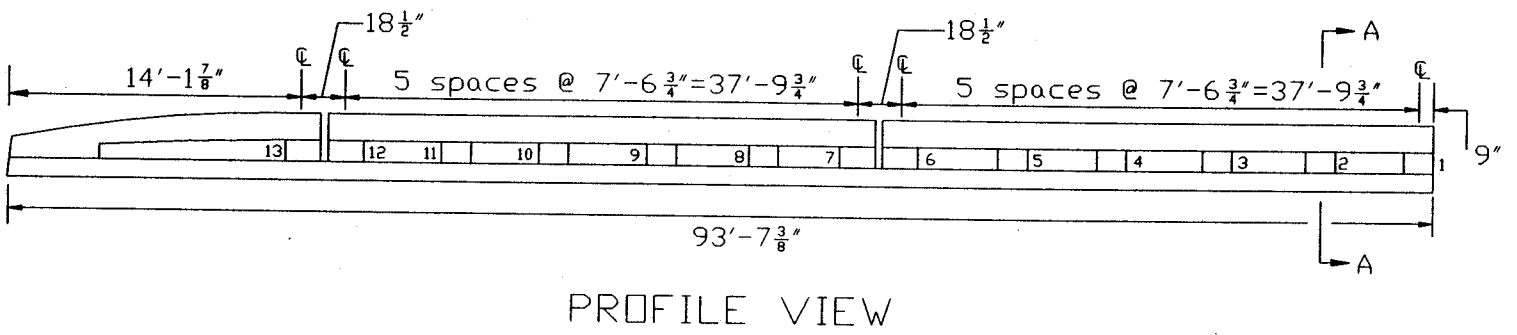
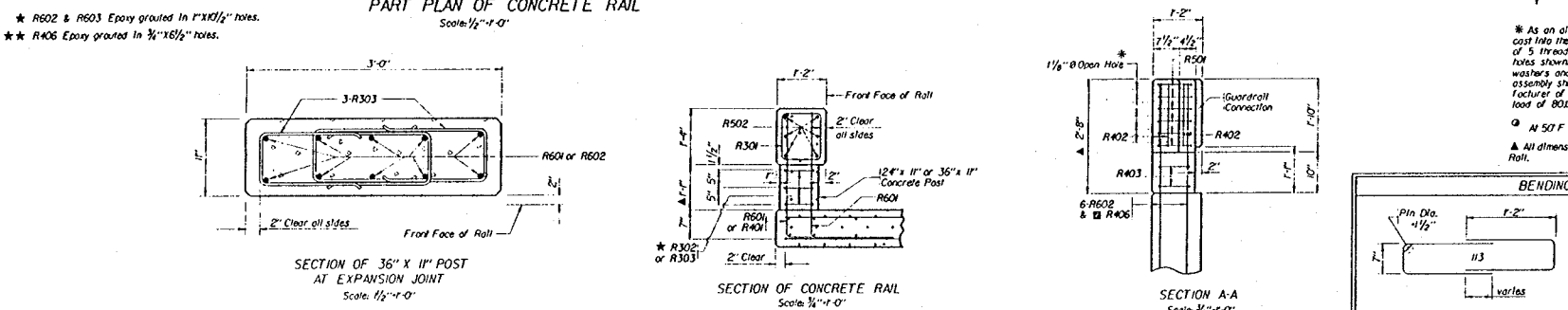
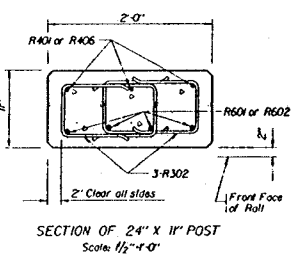
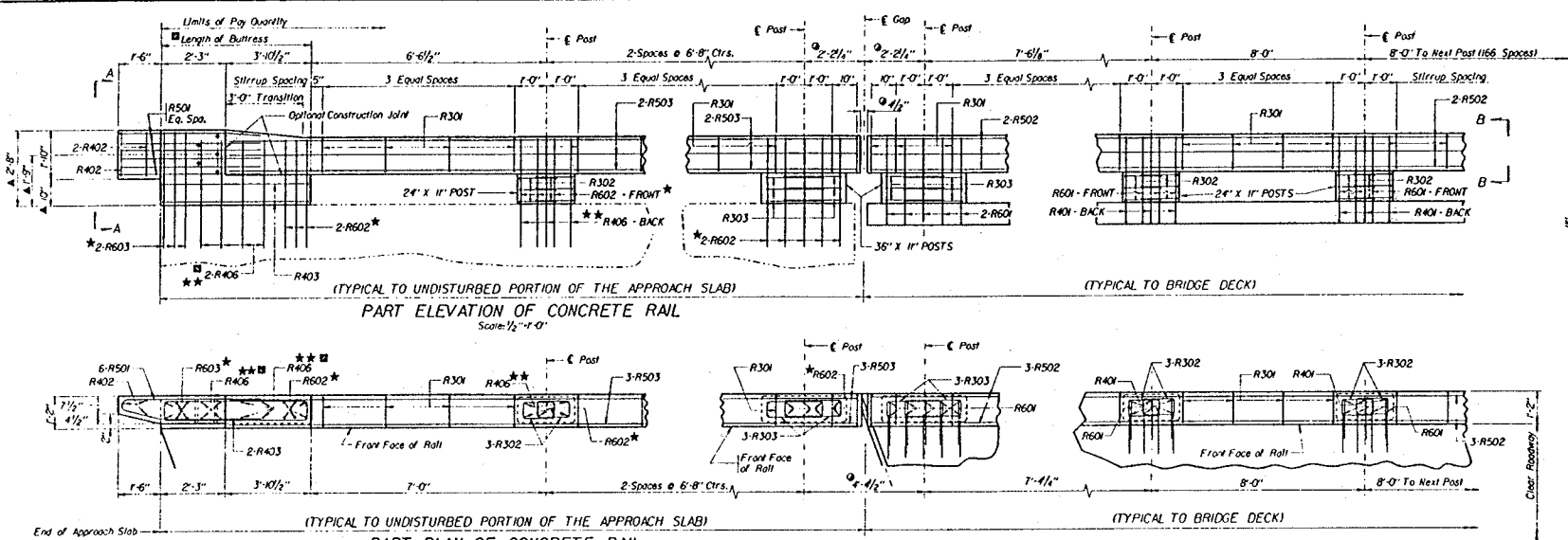


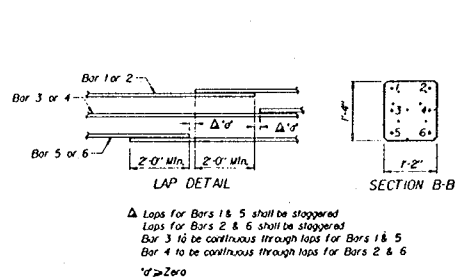
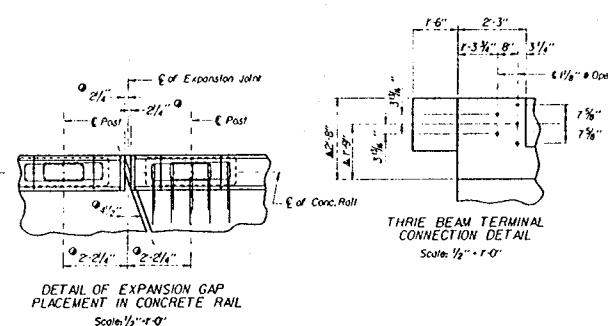
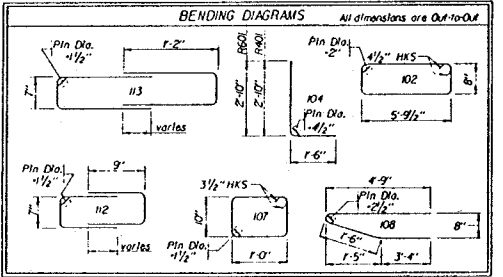
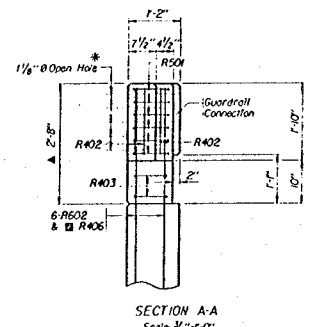
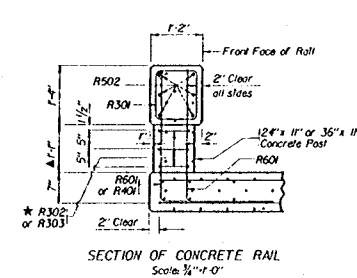
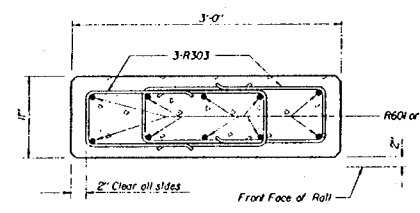
Figure B7.49. Natchez Trace Parkway Concrete Bridge Railing (50,51).

STATE	PROJECT NUMBER	SHEET NO.
NEBR.	BHF-50-2(121)	11
REVISIONS		



■ The Number of R406 Bars will depend on the length of the Buttriss.
 2'-3\"/>

* As an alternate method, the contractor may furnish and cast into the concrete an approved welded assembly consisting of 5 threaded inserts held accurately to the template of the holes shown inserts to be complete with galvanized plate washers and galvanized 1/2\"/>



MARK	NO.	LENGTH	TYPE
R601	1392	4'-4"	K04
R602	48	3'-1/2"	STR.
R603	12	3'-4/8"	STR.
R501	12	9'-7"	K08
R502	12	14'-0\"/>	
R503	12	25'-11"	STR.
R401	1044	4'-4"	K04
R402	6	1'-6"	STR.
R403	4	13'-8"	K02
R406	32	2'-9/16"	STR.
R301	1396	4'-3"	K07
R302	1026	4'-2"	K02
R303	18	5'-10"	K13

① INCLUDES 23 2'-0\"/>

Nebraska DEPARTMENT OF ROADS BRIDGE DIVISION		
STATE ROAD	LOUISVILLE-NORTH	SKEW
HWY. NO.	N-50	DESIGN
REF. POST	7712	ROADWAY
COUNTY	CASS-SARPY	STA.
		747-60

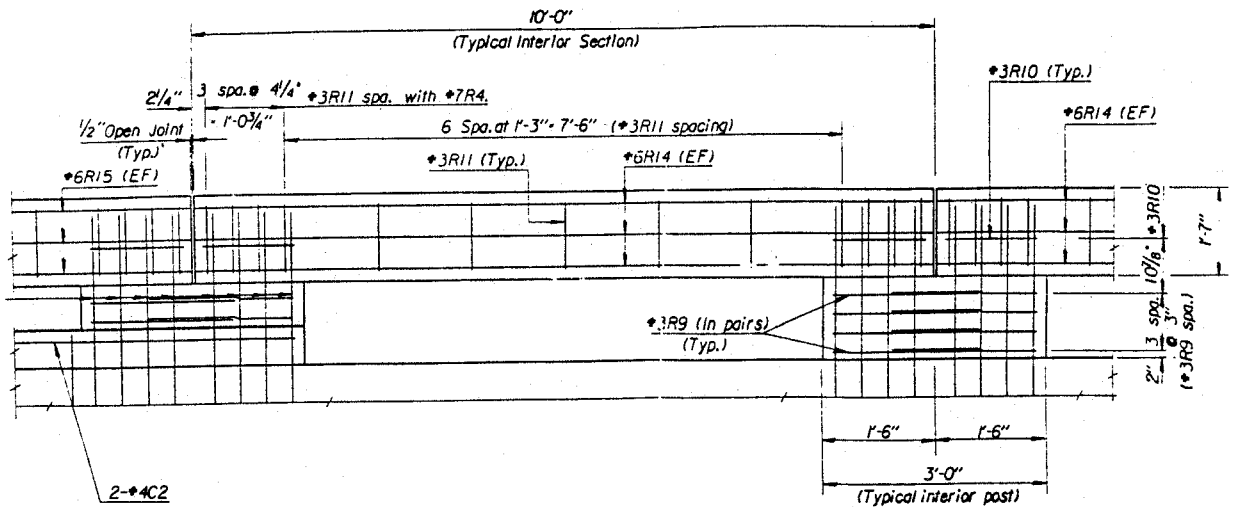
1360'-0\"/>

DESIGNED BY	PSH	BRIDGE ENGINEER			
DETAILD BY	PSH	PROJECT NUMBER			
CHECKED BY	COB/GAB	BHF-50-2(121)			SPECIAL PLAN NO.
DATE	AUG/92	1			7

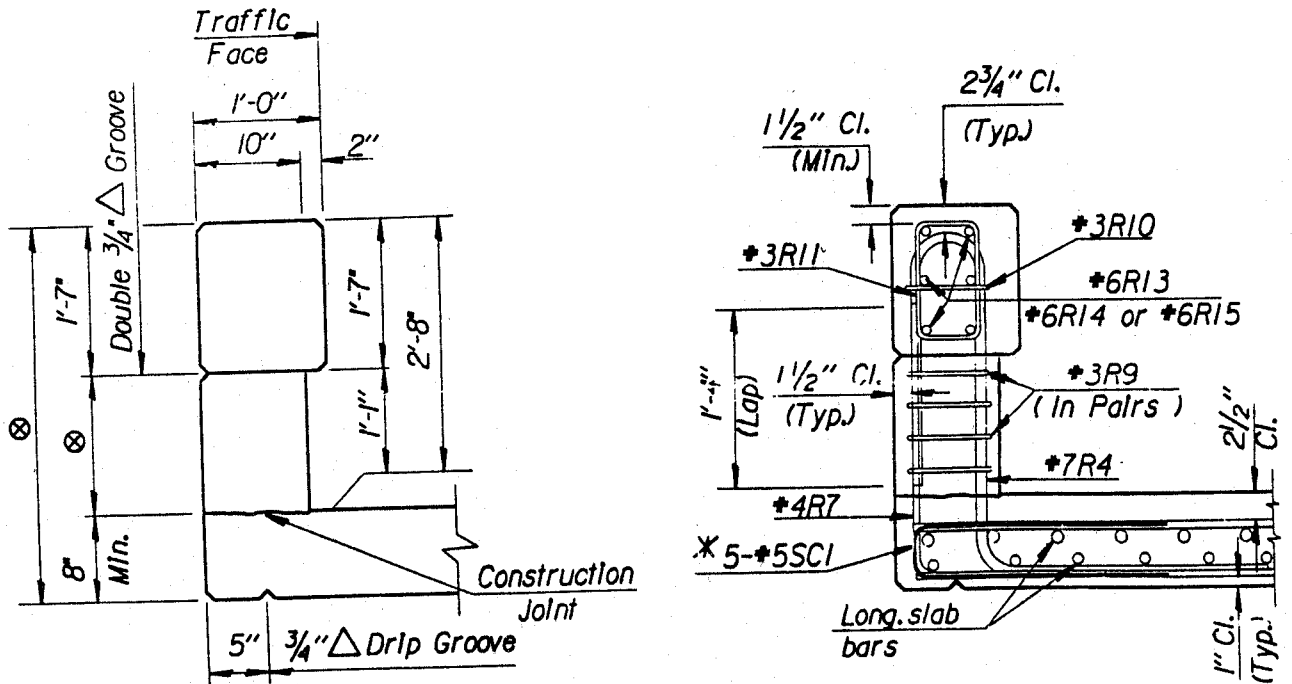
STRUCTURE NO. S050-077J2

456

Figure B7.50. Nebraska Open Concrete Bridgerail (55,56).



TYPICAL ELEVATION
(Exit End divided roadway, Only)



TYPICAL INTERIOR POST

Figure B7.51. 32-in Kansas Corral Bridge Rail (52).