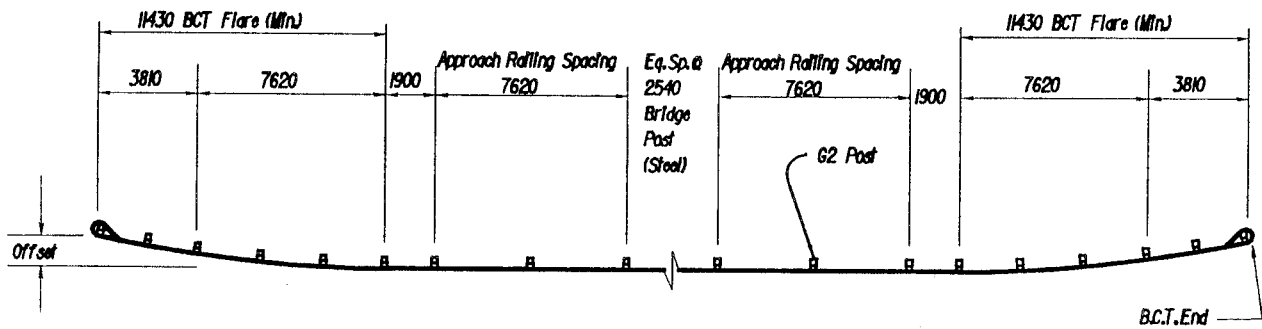
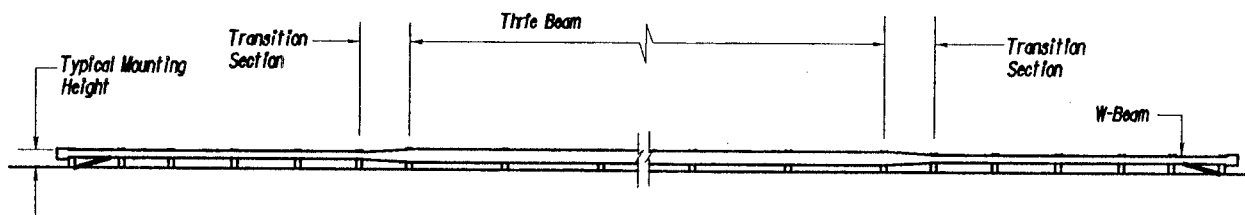


Service level 1 bridge railing drawing—wood post.

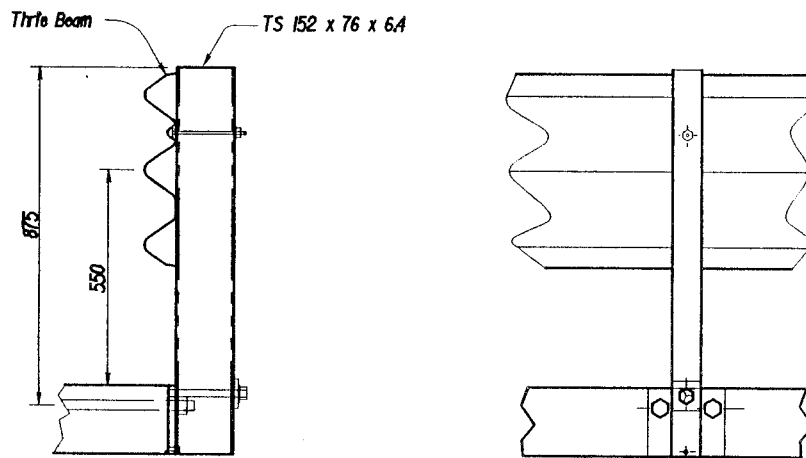
Figure B7.3. NCHRP SL1 Thrie Beam, Wood Posts (2,5).



PLAN VIEW



ELEVATION VIEW



All Dimensions Shown Are mm unless Otherwise Noted.

FIGURE D.1 Side-Mounted Thrie-Beam Bridge Railing

Rail Height	810 mm			
Test Vehicle	902-kg Car	1022-kg Car	1022-kg Car	9080-kg Bus
Impact Speed km/h	99	94	97	72
Impact Angle Degrees	14.1	16.0	16.0	7.7

Figure B7.4. NCHRP SL1 Thrie Beam, Steel Posts (2,5).

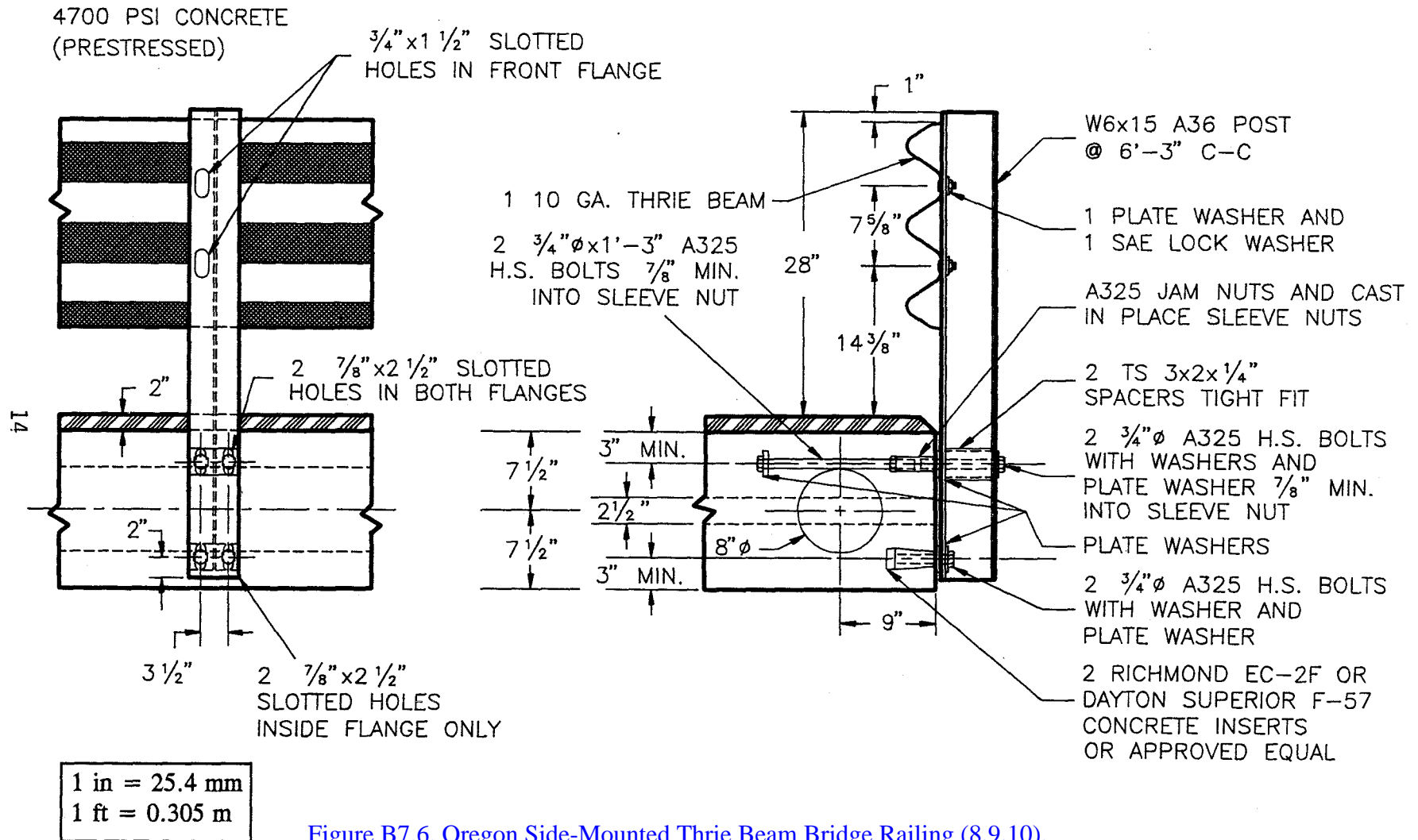
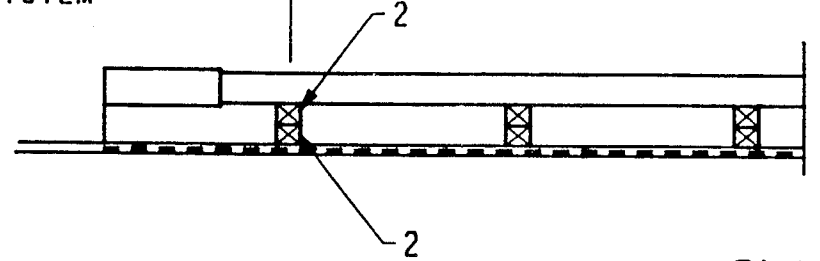
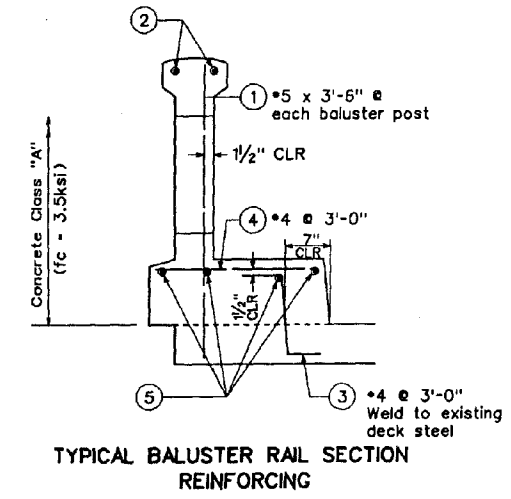
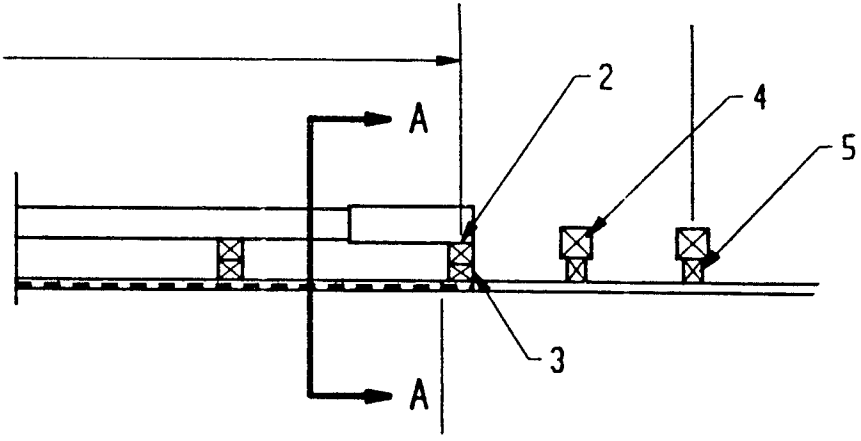


Figure B7.6. Oregon Side-Mounted Thrie Beam Bridge Railing (8,9,10).

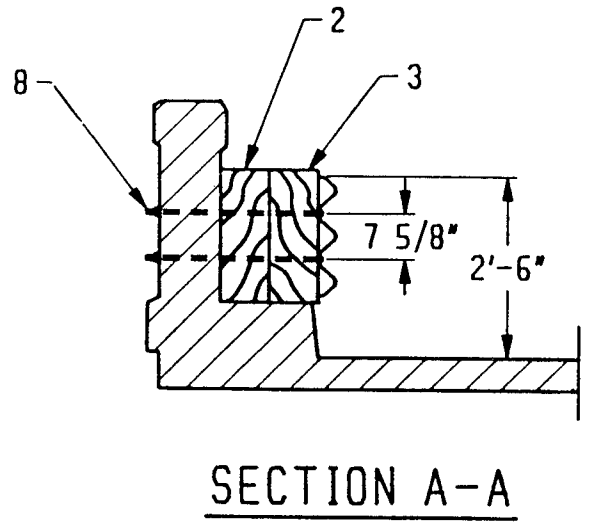
STANDARD GUARDRAIL SYSTEM
13 SPACES AT 6'-3"



PLAN

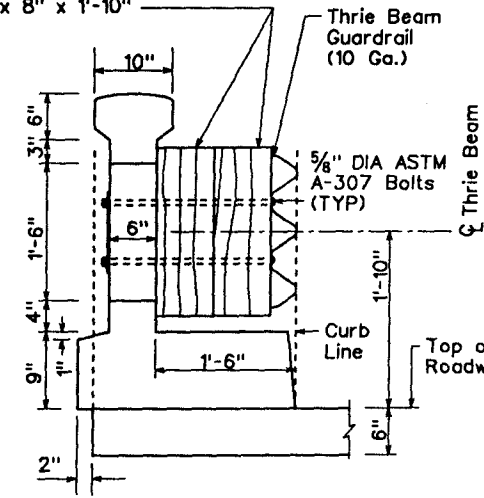


413



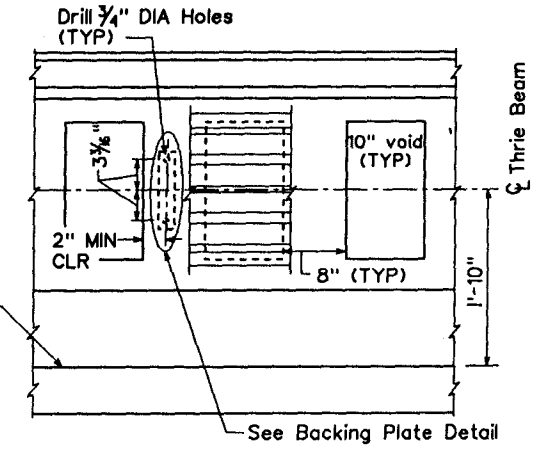
SECTION A-A

Treated timber blackout with vertical grain (Thrie Beam blocked out to curb line) nominal dimensions S4S 8" x 8" x 1'-10"



TYPICAL BALUSTER RAIL SECTION

NOTE
Locate holes at least 2" from edge of baluster, spacing 6'-3" MAX



ELEVATION OF BALUSTER

FIGURE 8: WASHINGTON 10 GAGE THRIE BEAM RETROFIT FOR BALUSTERS CURB/SIDEWALK

Figure B7.7. Washington 10 gage Thrie Beam Retrofit for Concrete Balusters with Curbs and Sidewalks (11).

414

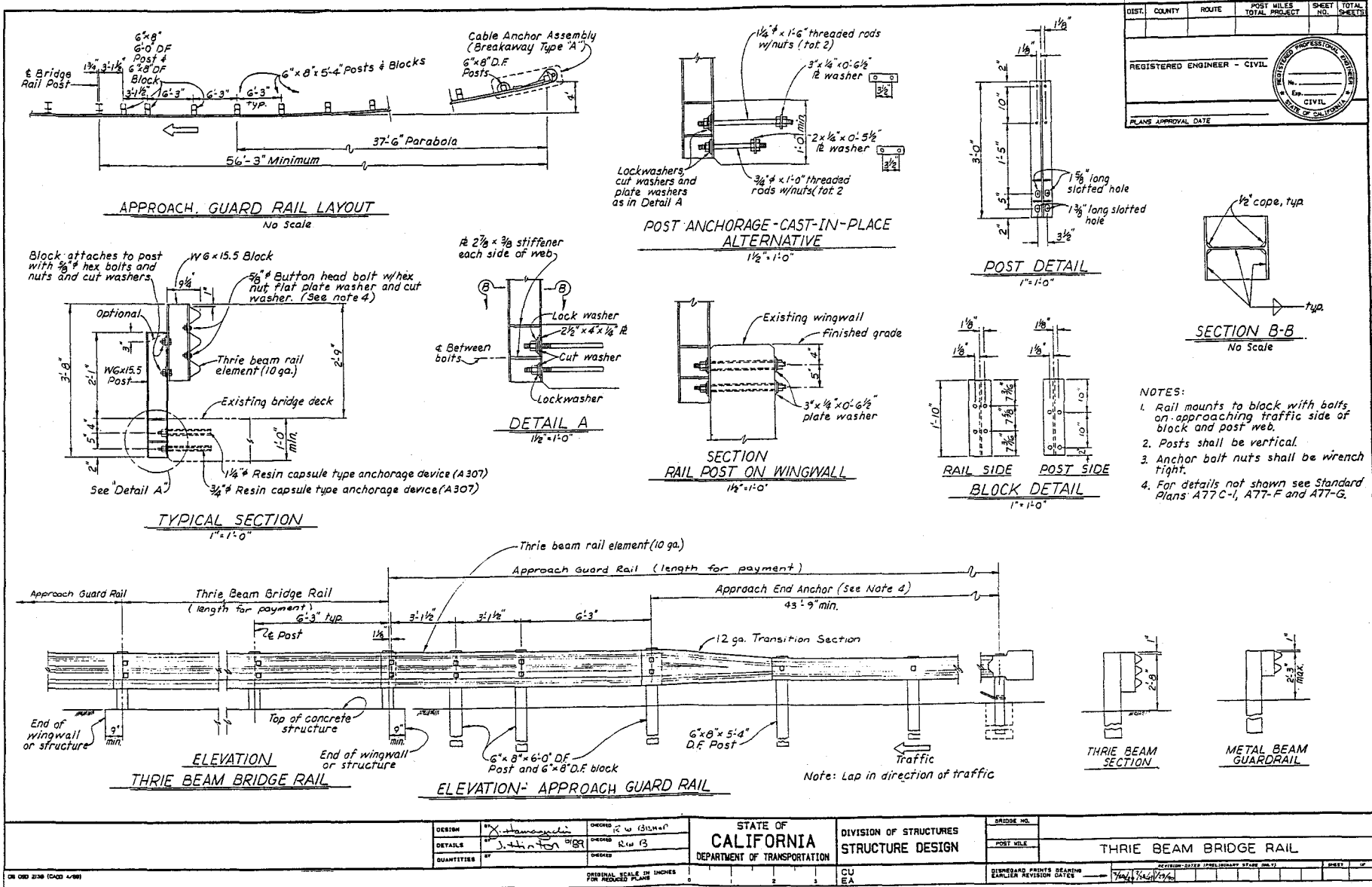


Figure B7.8. California Thrie Beam Bridge Rail (12,13).

Overall Length: 68 ft

10 ft, 7.75 in (typ)

16 in wide by 12 in deep post

6 in by 8 in wood block (nominal)

Plan View

10 gauge thrie beam

Steel R4 Railing

Elevation

Brush Block

Deck

Side View

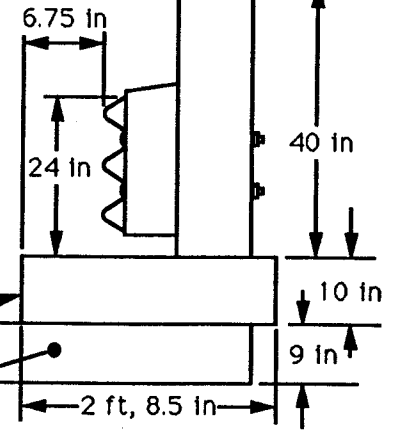
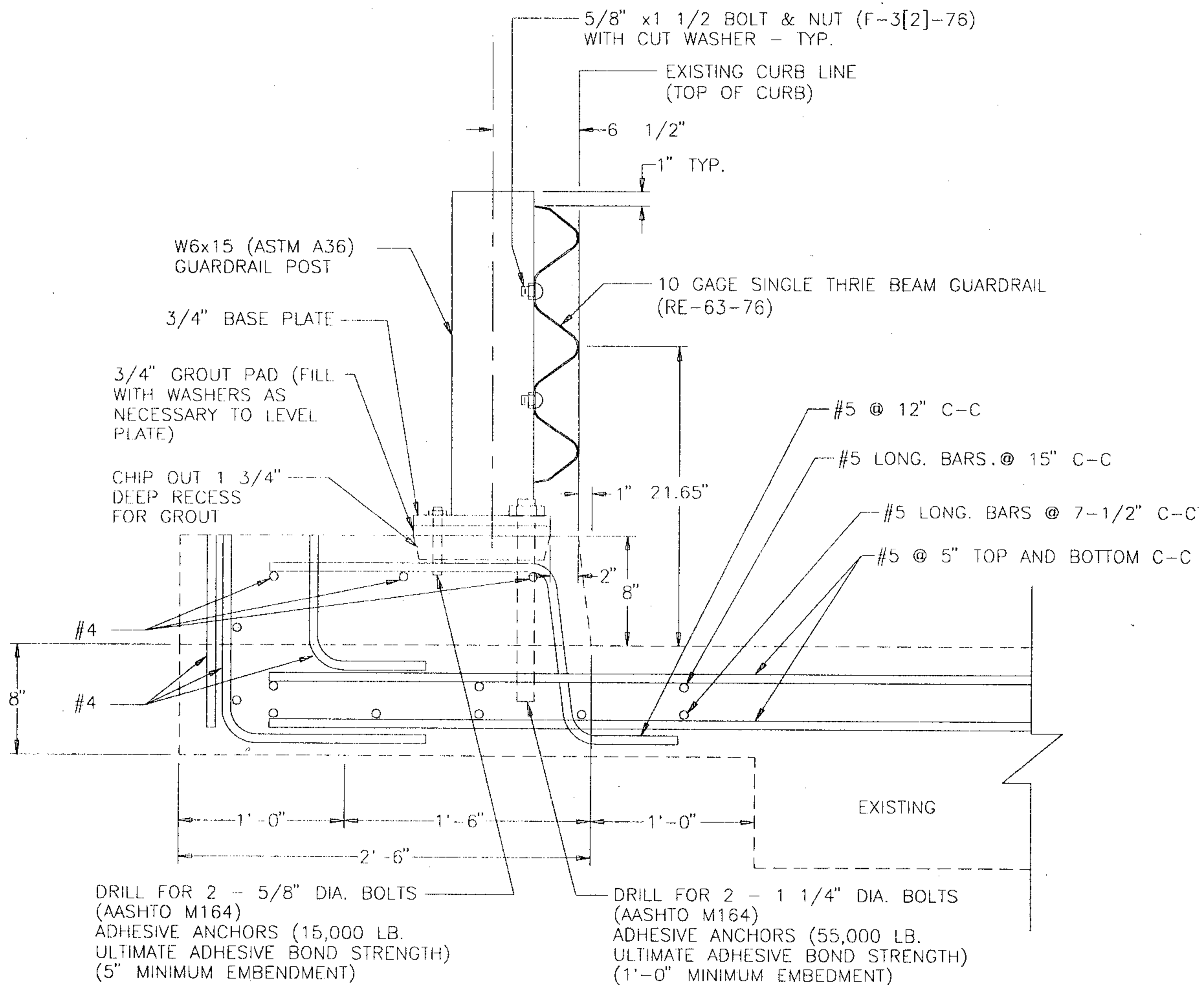


Figure B7.10. Michigan R4, 10-gauge Thrie Beam Retrofit on Curb / Sidewalk (16).



1 ft = 0.305 m
1 in = 25.4 mm

Figure B7.11. Delaware Thrie-Beam Retrofit Railing Curb Mounted (4).