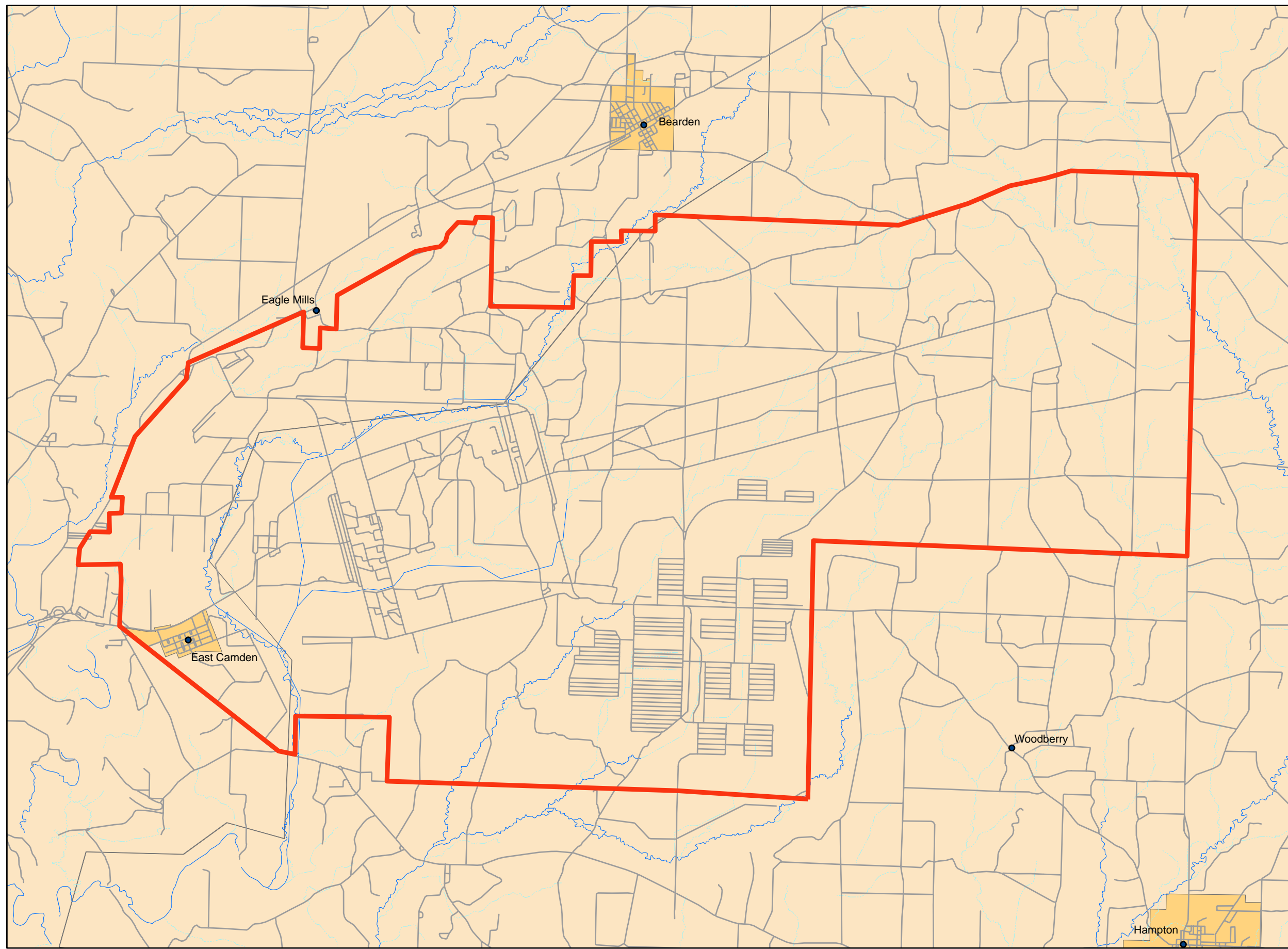
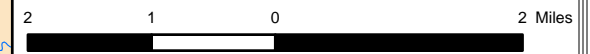


FIGURES

**Figure 1
Site Location
Shumaker Naval
Ammunition Depot**



- Cities
- Site Boundary (Approximate)
- Roads
- Stream
- Intermittent Stream
- City Limits

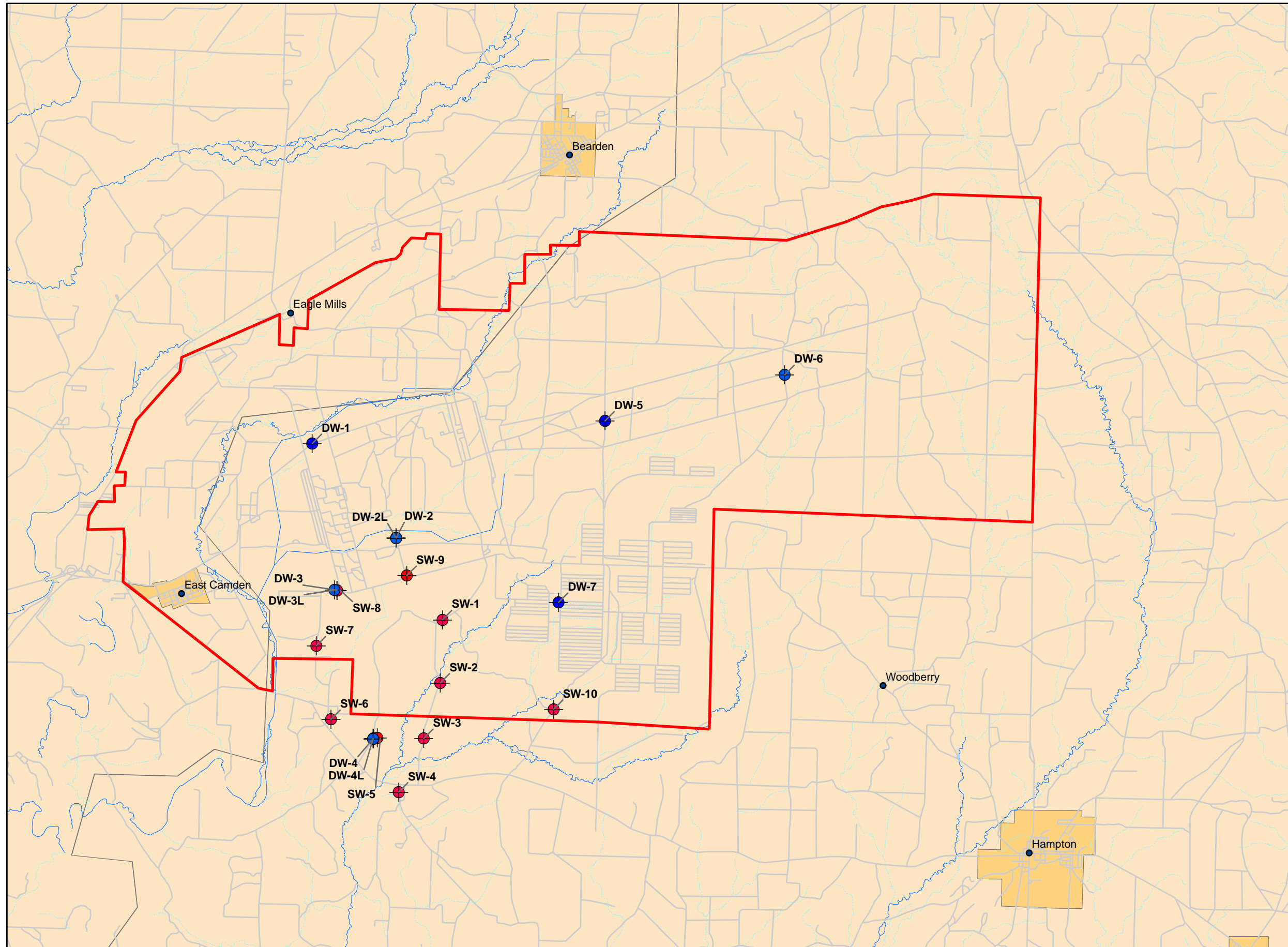


Source: * USGS 100K Streams Roads
 * US Census Cities
 * Site Boundary approximated from Figure 1 of the Final Decision Document, Former Shumaker Naval Munitions Site, prepared for the US Army Corp of Engineers, 2003

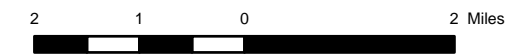
Date: 06/11/07
 Created by: MKS
 Project: RO6 928



Figure 2
Monitoring Well Locations
Shumaker Naval
Ammunition Depot



- Shallow Well
- Deep Well
- Cities
- Site Boundary Approximate
- Roads
- Stream
- Intermittent Stream
- City Limits



Source: * USGS 100K Streams Roads
 * US Census Cities
 * Site Boundary approximated from Figure 1 of the Final Decision Document, Former Shumaker Naval Munitions Site, prepared for the US Army Corp of Engineers, 2003

Date: 06/12/07
 Created by: MKS
 Project: RO6 928

