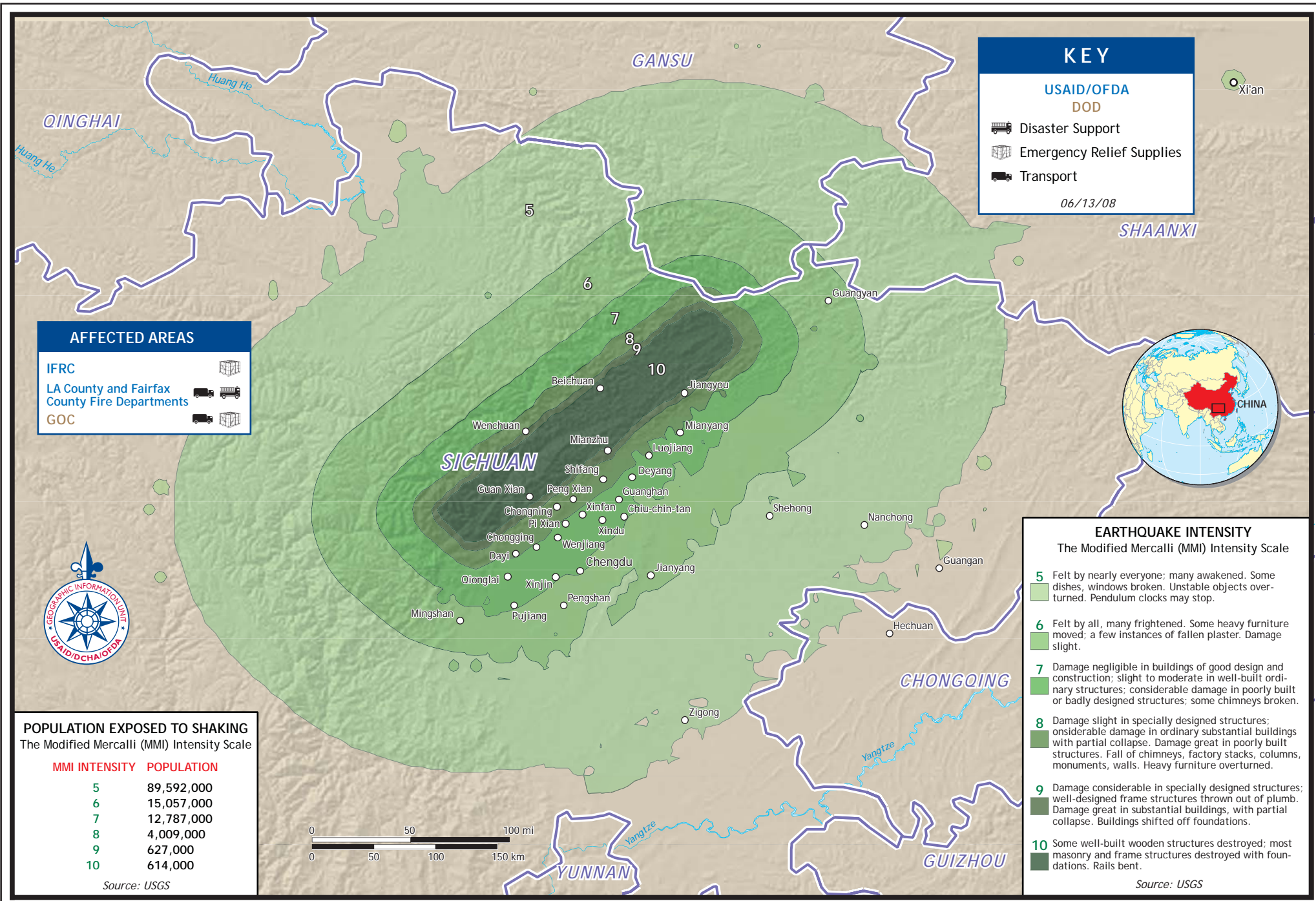


USG HUMANITARIAN ASSISTANCE TO CHINA



KEY

USAID/OFDA
DOD

- Disaster Support
- Emergency Relief Supplies
- Transport

06/13/08

AFFECTED AREAS

IFRC
LA County and Fairfax
County Fire Departments
GOC



POPULATION EXPOSED TO SHAKING
The Modified Mercalli (MMI) Intensity Scale

MMI INTENSITY	POPULATION
5	89,592,000
6	15,057,000
7	12,787,000
8	4,009,000
9	627,000
10	614,000

Source: USGS

EARTHQUAKE INTENSITY
The Modified Mercalli (MMI) Intensity Scale

- 5** Felt by nearly everyone; many awakened. Some dishes, windows broken. Unstable objects overturned. Pendulum clocks may stop.
- 6** Felt by all, many frightened. Some heavy furniture moved; a few instances of fallen plaster. Damage slight.
- 7** Damage negligible in buildings of good design and construction; slight to moderate in well-built ordinary structures; considerable damage in poorly built or badly designed structures; some chimneys broken.
- 8** Damage slight in specially designed structures; considerable damage in ordinary substantial buildings with partial collapse. Damage great in poorly built structures. Fall of chimneys, factory stacks, columns, monuments, walls. Heavy furniture overturned.
- 9** Damage considerable in specially designed structures; well-designed frame structures thrown out of plumb. Damage great in substantial buildings, with partial collapse. Buildings shifted off foundations.
- 10** Some well-built wooden structures destroyed; most masonry and frame structures destroyed with foundations. Rails bent.

Source: USGS

The boundaries and names used on this map do not imply official endorsement or acceptance by the U.S. Government.