

Children's Environmental Health



Houston Department of Health and Human Services

ANNE GEDDES

High risk areas are identified based on the CDC risk factors

- ❖ Historical prevalence of lead poisoning
- ❖ High-risk age group
- ❖ Poverty status
- ❖ Age of housing (pre-1978)
- ❖ Racial/Ethnic minority status



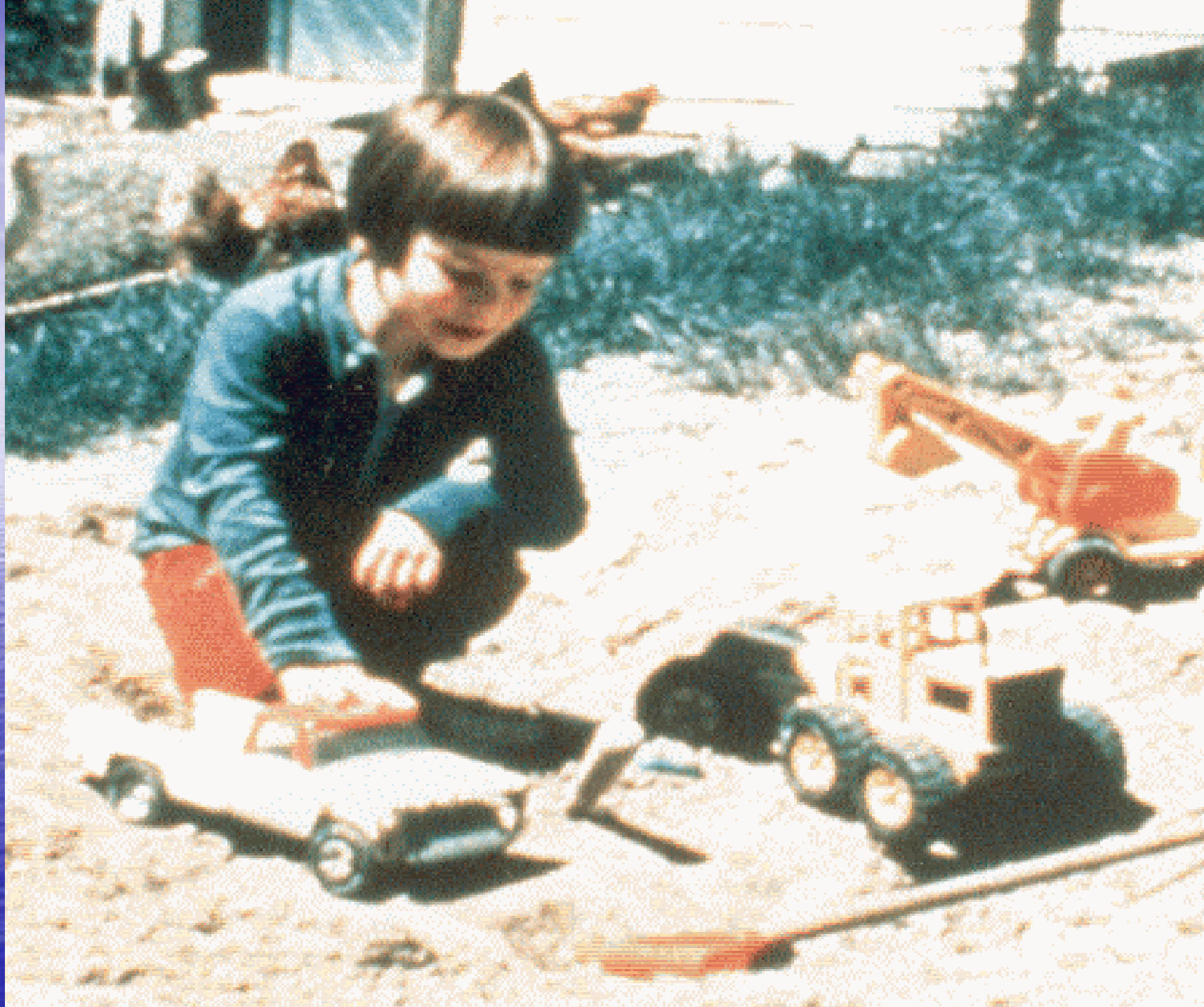
246



Other outside sources



- Environmental sources such as smelters, lead-related industry







Our pets also become lead poisoned

Pregnancy

Hypertension
Spontaneous abortion
Teratogenic
stillbirth

Adolescent

Violent
Drop out
Irritable
Delinquency

Fetus

Low growth
Malformations

Child

Hyperactive
Low IQ
Aggression
Poor concentration

Infant

Low growth
anemic
Irritable
Colic

Lead through life

Reyes-Craniotis (2002)





Where

is

the

lead?



GRETA

AZARCÓN

HOME REMEDIES

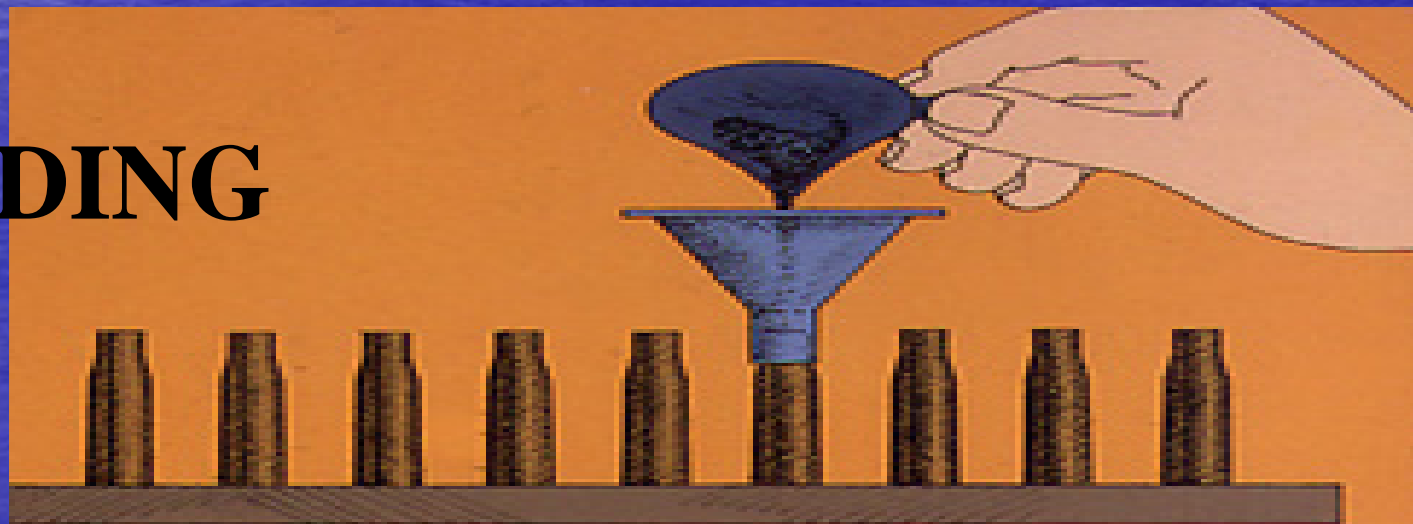


Sources





RELOADING





Made in USA

Imported candy from Mexico and other countries



Mexican Candies



Dread Pirate Coffee Table Games



Jordan Nike Shoe Recall



Brass Items



Antique painted toys

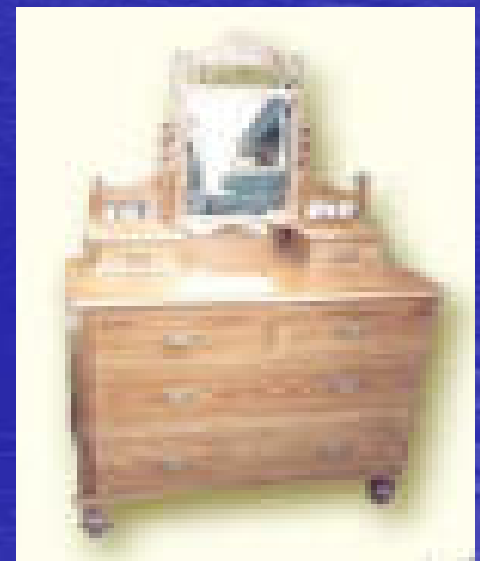
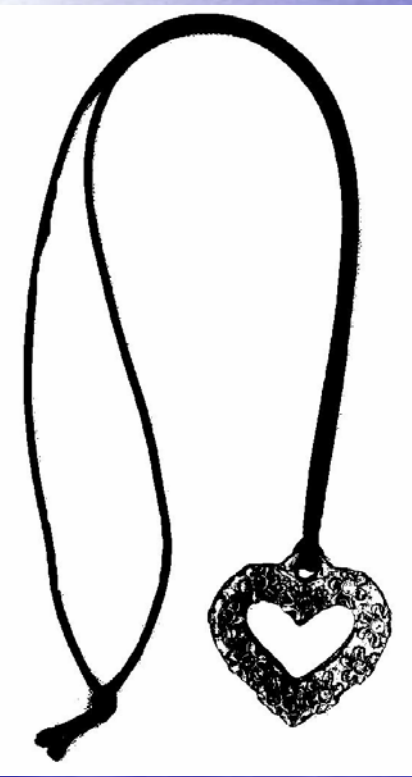


Chalk



MMWR: *Dispatch* March
23, 2006 / 55(Dispatch);1-2

- Death of a Child After Ingestion of a Metallic Charm --- Minnesota, 2006
 - Reebok and CPSC have issued a voluntary recall of 300,000 heart-shaped charm bracelets.
 - Small inexpensive metallic jewelry can have high lead content.
 - Parents and caregivers should not allow children to mouth small metallic objects.



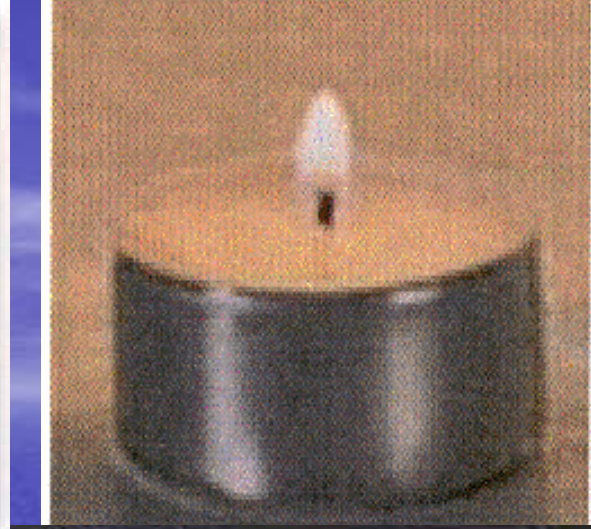


- Source of largest product recall ever by CPSC with hundreds of millions of items





SURMA CONTAINER





Vinyl Lunchboxes



- Identified CA – no known cases
- No clear Federal standard or regulatory authority
- CPSC exterior and FDA interior
- 100ppm

Non-lead paint sources may cause as much as 30% of cases of children with elevated blood lead levels and responsibility for controlling or eliminating these sources rests with many agencies:

- Regulate exposure: EPA, HUD, OSHA, FDA, and CPSC
- Control and Enforce: Commerce, Customs, Federal Trade Commission
- Science and Prevention: CDC

WHERE ARE CHILDREN EXPOSED TO ENVIRONMENTAL HAZARDS TO





Where are the hazards

75% OF US HOMES BUILT
PRE 1978 CONTAIN SOME
LEAD-BASED PAINT HUD



What is a Healthy Home?

A ***HEALTHY HOME*** is a home designed, constructed, maintained, or rehabilitated in a manner that **supports** the **health of residents**.

HEALTH

Primary Prevention

Secondary Prevention

Epidemiologic Triangle

HOUSING

Well constructed

Well maintained

Dry

Clean

Pest-free

Comfortable

Ventilated

Safe

Avoid contaminants

Lead
Radon
Allergens/asthma
Combustion products
Unintentional Injuries
Insects and Rodents
Mold and Moisture
Pesticides
Asbestos
Fire



Air pollution- outdoor air/ indoor air

Exterior



Exterior



Entryway



Kitchen



Bedroom 1



Bedroom



Bathroom



Laundry Room

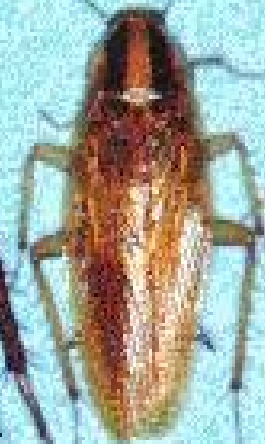




American



Oriental



German



Brown-banded

