

Community Action for a Renewed Environment Briefing October 2007



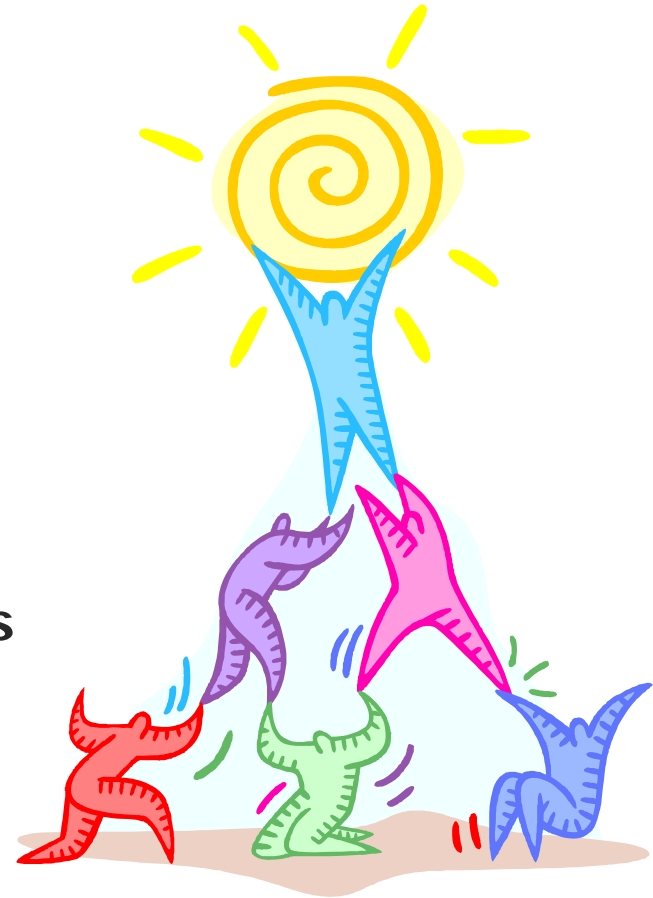
[What is CARE?]

CARE is a **community-based,**
community-driven
program created to build
partnerships to help communities
understand and reduce toxic risks
from all sources.



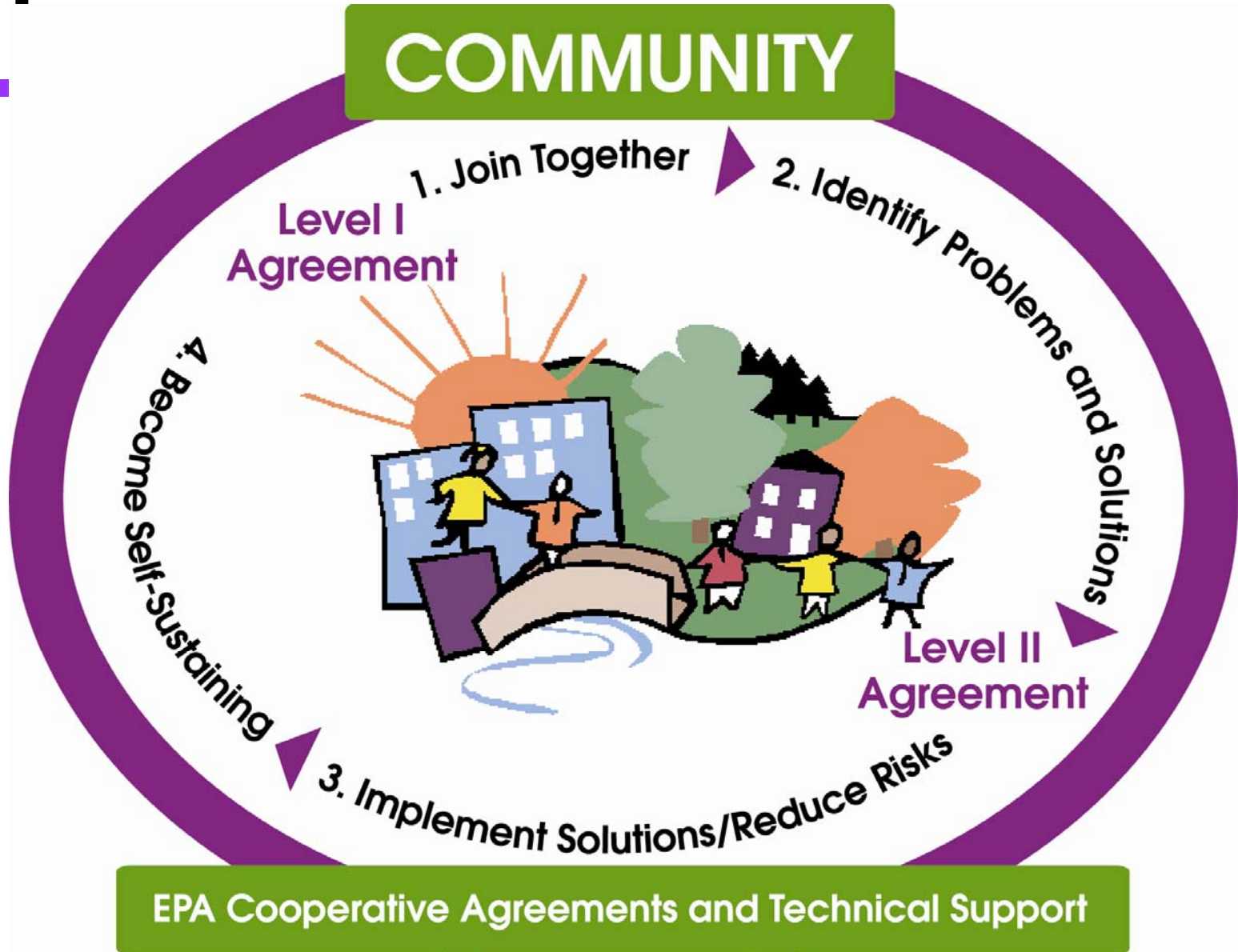
CARE Goals

- Reduce exposures to toxic pollutants through collaborative action at the local level
- Help communities gain an understanding of all potential sources of exposure to toxic pollutants
- Work with communities to set priorities for risk reduction activities
- Create self-sustaining, community based partnerships that will continue to improve the local environment



How CARE Works

COMMUNITY



CARE is More than Money

EPA works directly with communities to provide:

- Technical support and information
- Scientific expertise and assessment
- Community planning to help identify and reduce risks
- EPA partnership programs
- Networking opportunities
- Shared Learning



CARE Tools for Communities



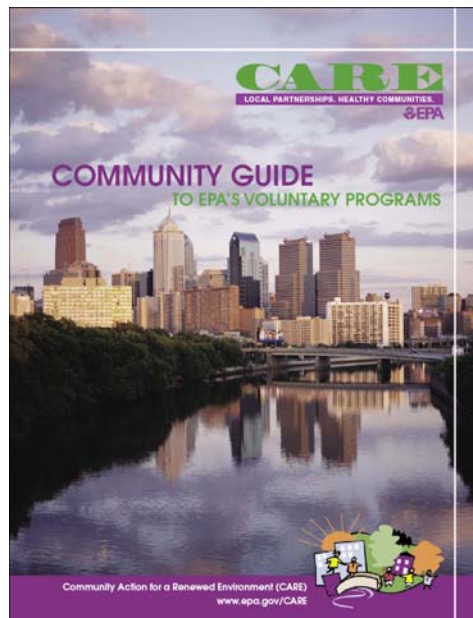
The Roadmap

(expected soon)

A method for communities to assess local risks

Community Guide to EPA's Voluntary Programs

A guide of EPA voluntary programs of greatest benefit to communities



The CARE Resource Guide

A comprehensive map of EPA's on-line resources for communities

All available at:

www.epa.gov/CARE

[Funding CARE Communities]

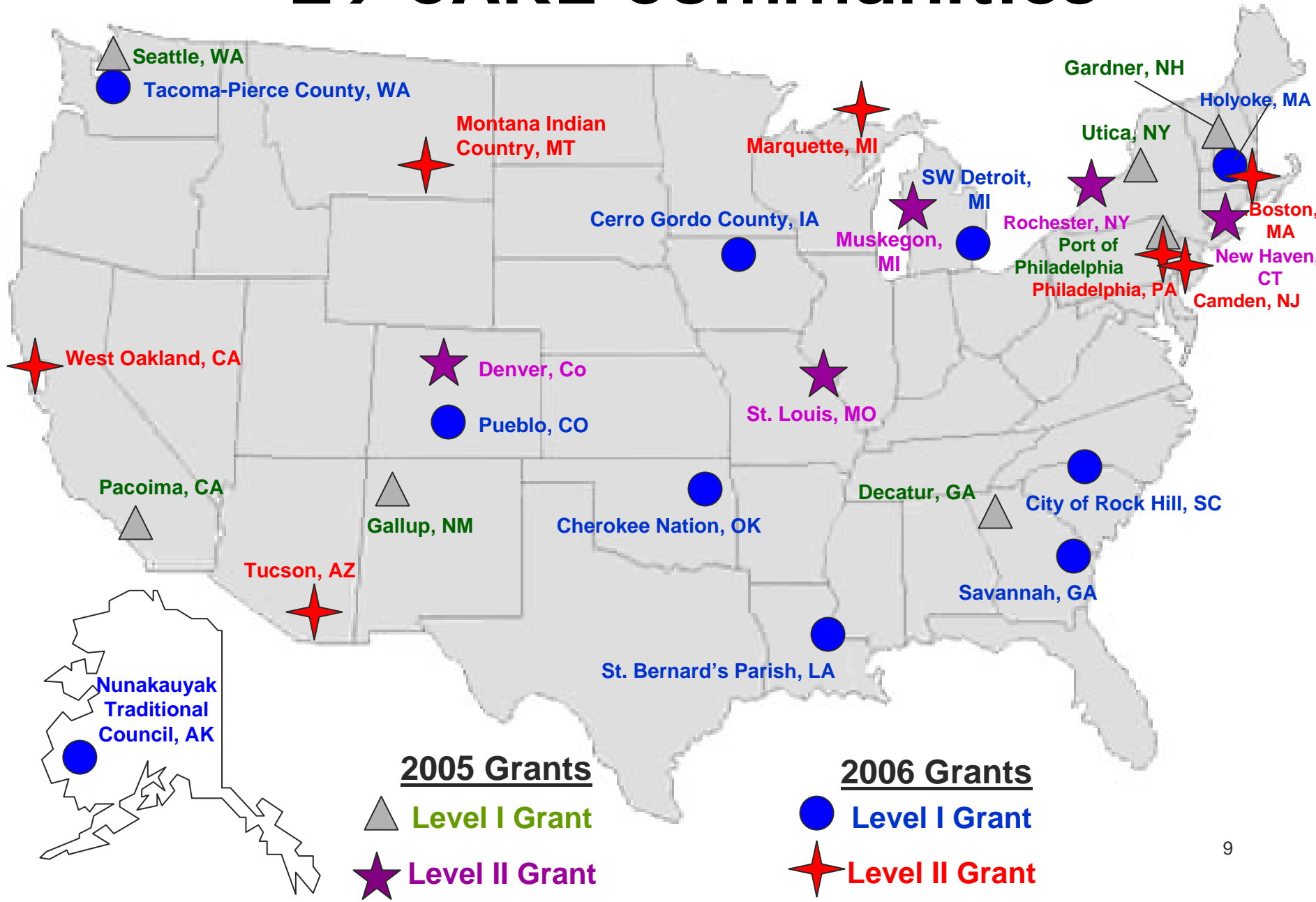
Nationally competed cooperative agreements will be awarded in two categories:



Eligible Recipients for CARE Cooperative Agreements

- Non-Profit Organizations
- Federally Recognized Indian Tribal Governments
- Native American Organizations
- Quasi-Governmental Organizations
- Local Governments
(City, County)
- Colleges and Universities

29 CARE Communities



Building Partnerships

- Other Federal Agencies
 - Building awareness among other federal agencies to provide assistance to CARE communities
 - MOU recently signed between EPA and CDC/ATSDR, 4 national pilot projects selected
 - Region 6 Cherokee Nation
- Foundations
 - Hoping to promote partnerships between CARE communities, EPA and foundations.
- Other Organizations
 - ABA providing Pro Bono legal support for CARE communities



CARE Contacts

- **CARE Hotline**
 - 1-877-CARE-909
- **CARE Website**
 - www.epa.gov/care



Region 6 CARE Contact

- Region 6 CARE Coordinator

- Cindy Parker

- 214-665-7291

- parker.cindy@epa.gov

- 1445 Ross Avenue, 6PD-T
Dallas, TX 75202-2733

