

Rail passenger equipment accidents and the evaluation of crashworthiness strategies

D C Tyrell

Volpe National Transportation Systems Center, U.S. Department of Transportation, Cambridge, Massachusetts, USA

Abstract: The U.S. Department of Transportation's Federal Railroad Administration's (FRA) Office of Research and Development has been conducting research into rail equipment crashworthiness. The approach taken in conducting this research has been to review relevant accidents, identify options for design modifications to improve occupant survivability, and to apply analytic tools and testing techniques for evaluating the effectiveness of these strategies. Accidents have been grouped into three categories: train-to-train collisions, collisions with objects, such as grade crossing collisions, and derailments and other single train events. In order to determine the potential effectiveness of improved crashworthiness equipment, computer models have been used to simulate the behavior of conventional and modified equipment in scenarios based on accidents.

Keywords: railroad, train collisions, crashworthiness, occupant protection

1 INTRODUCTION

Train accidents can be tragic events, with loss of life and serious injuries. The crashworthiness features of the train are intended to minimize fatalities and injuries if an accident does occur. The purpose of such features is to preserve sufficient space for the occupants to ride out the collision, and to maintain the forces and decelerations imparted to the occupants within survivable levels. Structural features of the cars, such as longitudinal strength of the carbody and crush zones at the ends of cars, influence how well the cars preserve the occupant volume during a collision and the decelerations imparted to the occupants. Occupant protection features inside the car, such as compartmentalization, influence the forces imparted to the occupants. This paper focuses on the structural features of the cars and the performance of the equipment during train collisions and derailments.

1.1 Research

The FRA conducts research on rail equipment, track, and operation safety. Research areas include collision avoidance measures such as positive train control and strategies for minimizing operator fatigue, as well as equipment crashworthiness [1]. Keeping the trains separated is the first line of defense in assuring passenger and operator safety, while equipment crashworthiness is the last line of defense. The information from this research has been used to develop federal safety regulations for passenger equipment,

which address emergency preparedness, fire safety, software safety, brakes, vehicle dynamic performance, and equipment crashworthiness [2]. (See a companion paper for a discussion of federal crashworthiness regulations [3].)

The overall objective of the rail equipment crashworthiness research is to develop design strategies with improved crashworthiness over existing designs. The approach used in conducting this research is illustrated in the flow diagram shown in Figure 1. Information from train accidents is used in all aspects of this research. The rail equipment crashworthiness research approach is as follows:

1. Define the collision scenarios of concern. For developing crashworthiness, the accidents identify the conditions that, if possible, are to be survived. These conditions include the collision or derailment speed, the train and other objects, and the track conditions. Some accidents happen under such circumstances – for instance at such great speed -- that it is a practical impossibility to survive such collisions. Very high-speed collisions require the use of buffer cars or other measures which have not been considered practical. The collision scenarios of concern are developed by reviewing the relevant accidents, by statistically analyzing the accident data, as well as by failure analysis of collision avoidance measures [4, 5]. The goal in developing the collision scenarios of concern is to develop a limited number of scenarios that bound the range of likely

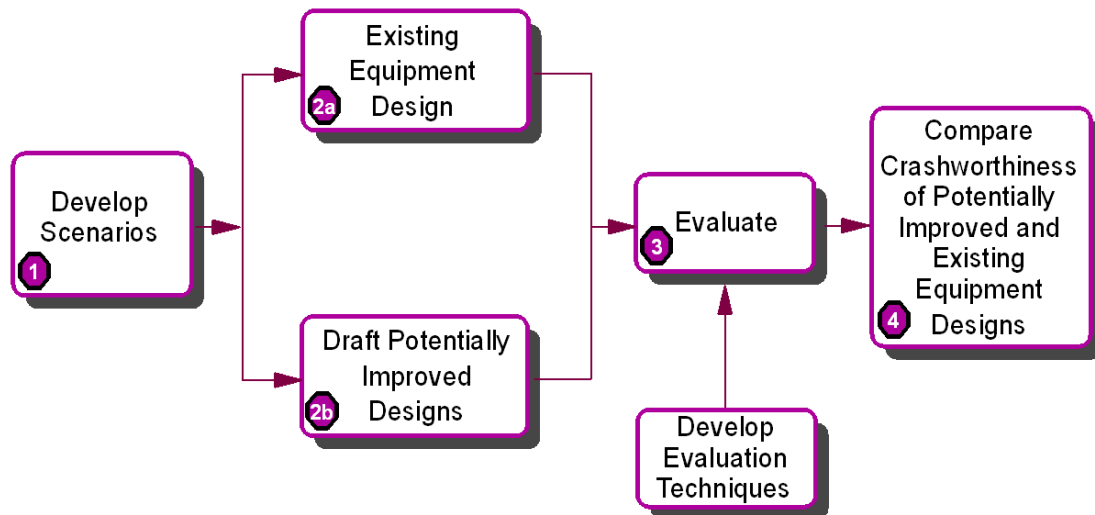


Fig. 1 Flow diagram, crashworthiness research principal tasks and utilization of accident information

collisions. These scenarios are used as the basis for evaluating the effectiveness of crashworthiness design options.

- 2a. Develop information on the features of existing designs which influence crash-worthiness. Information on the design details of the equipment – the geometry of the structure, material properties, welding and attachment details, etc. – are developed for use in analytic models and in the development of test articles. The results of accidents include the damage to the equipment, such as structural failure, which in turn indicates the design details for which information must be developed.
- 2b. Develop options for design modifications. Both modifications to existing designs, such as strengthening existing members and providing stronger connections between existing framing members, and clean-sheet designs have been developed. In some instances, potentially effective modifications can be directly inferred from accident consequences. In other instances, extensive analysis is required to determine potentially effective crashworthiness strategies.
3. Determine the effectiveness of existing design and alternative design equipment. From post-accident results, it can be seen how effective the equipment was in preserving the survival space for the occupants and in maintaining the forces and decelerations imparted to the occupants to survivable levels. There are typically gaps and uncertainties in the information available from accidents. Analyses and tests are used to fill in the gaps of information available from accidents [6-11]. Analytic models and tests, similar to those developed and conducted for the conventional

equipment, are used to evaluate the effectiveness of the alternative designs [6, 8, 12, 13].

4. Compare the crashworthiness of the alternative designs with the existing designs. For a given collision scenario of concern, comparisons are typically made in terms of the maximum collision speed for which everyone would be expected to survive, or, to support a cost/benefit analysis, in terms of fatalities and injuries as a function of collision speed.

In order to evaluate the crashworthiness of existing and alternative designs, analytic tools and testing techniques are developed and refined. Accidents provide information for comparison to analytic model predictions, and help provide some level of assurance of the fitness of the models. The information available from accidents includes observations of the equipment damage, estimates of initial position and speed of the equipment, and measurements of equipment final position. There is also information on occupant injury and fatality, which can be used to estimate the forces and decelerations acting on the occupants. Such information and comparisons are valuable, as rail equipment crashworthiness tests can be prohibitively expensive. While much is often unknown about an accident – such as the precise collision speed and initial conditions for the equipment – analysis results should, at a minimum, qualitatively reproduce the accident consequences for nominally similar conditions. Testing, typically developed to approximate or idealize accident conditions, provides more detailed information for comparison with analysis predictions.

As part of the crashworthiness evaluations, the structural crush behaviors of the individual cars, the dynamic behavior of the trains, and the response of the occupants are evaluated. Structural crush behavior

includes the forces required for crushing of the structure, as well as the mode, or changing geometry, associated with crushing. The dynamic behavior of the train includes the gross motions of the cars, and the interactions of the cars during a collision. The forces and deceleration imparted to the occupants result from the gross motions of the cars and the occupants' consequent interactions with the interior.

This paper focuses on carbody crush and train collision dynamics. Nearly direct qualitative comparisons of the crush of the equipment and the positions of the cars after an accident can be made with analysis predictions. Detailed evaluation of occupant response requires information on the deceleration of the cars, which is not readily evident from the aftermath of an accident. These decelerations must be calculated using collision dynamics models developed to simulate the accident. While not addressed in detail here, extensive research has been done on the response of occupants during train collisions [14-17]. Focusing on carbody crush and train collision dynamics also allows a broader range of accident conditions to be addressed in this paper.

1.2 Train Crashworthiness

The behavior of the train during a collision is influenced by the interactions of the colliding cars, the nature of the coupling between the cars, and the crush behavior of the individual cars. Even in a train collision that is nominally head-on – that is the impacting cars are initially in-line and their centerlines coincident – one impacting car may override the other or the impacting cars may laterally deflect past each other. Override of one car by another is often associated with substantial loss of occupant volume, and consequent fatality. The tendency to override or laterally deflect depends upon how the structures of the cars crush and the dynamic responses of the cars in the train to the impact force, as well as the initial conditions of the impact. The mode of crushing of some car structures may effectively form a ramp, leading to vertical or lateral forces that are sufficient to cause override or to cause lateral deflection. The dynamic motions of the car can potentially contribute to misalignment of the underframes, amplifying the tendency toward override or lateral deflection.

For conventional North American heavy rail passenger equipment, the couplers between cars can lead to lateral buckling of the trainset as a consequence of a collision. When viewed from above, the cars in the train form an accordion pattern. These couplers essentially form a rigid link between cars. When there is a high longitudinal load present, with only a small perturbation, the link formed by the couplers laterally pushes on the

ends of the cars. As a result, when the ends of the cars contact, they are laterally offset from each other, and the train adopts a relatively small amplitude sawtooth pattern. Once the cars are misaligned, the high longitudinal force acting on one car exerts a significant lateral component on an adjacent car. Consequently, the train will continue to buckle out into the relatively large amplitude zigzag pattern if there is sufficient energy from the collision. Depending on the severity, this mode may progress until the cars have side-to-side impacts. The results of this behavior have been observed in accidents [18-20]. The progression of the cars being in-line, to the sawtooth lateral buckling pattern to the zigzag pattern has been simulated [7] with computational models. The progression from in-line to sawtooth buckling has been observed and measured in detail during testing [10, 11].

Because the carbody of a typical North American passenger car is essentially uniformly strong along its entire length, the structural damage tends to be focused on the colliding cars, and those cars immediately trailing the colliding cars. Cars away from the colliding cars often remain structurally intact. It has been shown that significant increases in crashworthiness can be achieved if the cars of a train have an increasing force/crush characteristic, i.e., the more the car is crushed, the greater the load that is required. An increasing force/crush characteristic can result in the structural crush being distributed among the cars of the train, potentially just crushing the unoccupied vestibules and better preserving the occupied volumes [21-24].

2 ACCIDENTS

This paper includes descriptions of six passenger train collisions and three derailments. Computer simulations have been developed for three of the collisions, and are referenced. Qualitative comparisons with analyses results have been made for two of the collisions. One of the collisions is currently under evaluation, and efforts are being made to determine the likely decelerations experienced by the occupants. The derailments are described more briefly than the collisions, as detailed information on how passengers are injured in such accidents has not yet been developed.

Passenger train accidents can occur under a wide range of circumstances, but those that can be mitigated by crashworthiness features of the train can be placed into three broad categories:

1. Collisions with another train
2. Collisions with objects, such as a grade crossing collision
3. Single train events, such as a derailment

Further classifications can be made within each of these categories. For example, significant differences may be expected for a locomotive led train colliding with another locomotive led train than for a locomotive led train colliding with a cab car led train. Track route alignment can also significantly influence the consequences of a collision; the consequences of a head-on collision on tangent track may be expected to be significantly different from an oblique collision at a switch. Similarly, the consequences of a grade crossing collision with a heavy highway truck are likely to be significantly different from a grade crossing collision with an automobile. For all accident types, the collision speed can also profoundly influence the consequences of the collision. Placing the accidents into categories allows calculation of the likelihood of occurrence for each collision category as well as the development of strategies for protecting the occupants in that collision category.

2.1 Collisions with Another Train

Train to train collisions include collisions between a passenger train and a freight train, as well as collisions between a cab car led train and a locomotive led train. Four accidents are described in this section:

1. Syracuse, New York, February 5, 2001
2. Bourbonnais, Illinois, March 15, 1999
3. Secaucus, New Jersey, February 9, 1996 [25]
4. Silver Spring, Maryland, February 16, 1996 [26]

2.1.1 Syracuse, New York, February 5, 2001

At approximately 11:40 am on Monday, February 5, 2001 an intercity passenger train rear-ended a freight train, approximately two miles east of the Syracuse, New York train station on Track 1. The freight train was traveling east at approximately 11 kph (7 mph), and at the time of impact, the passenger train was also traveling east, at a speed between 56 and 68 kph (35 and 42 mph). The closing speed at impact was between 45 and 56 kph (28 and 35 mph). The passenger train was on the exit spiral of a 1.5-degree curve, while the trailing

cars of the freight train were on tangent track. The point of impact was close to the transition point between the spiral and tangent track. Ten people aboard the passenger train were seriously injured, including a female passenger with a broken femur, and a male passenger with a broken wrist and broken ankle. About fifty passengers received less serious injuries, e.g., cuts and bruises. No one on the freight train was injured.

Figure 2 shows a post-accident schematic. The passenger train was made up of two locomotives, a coach/dinette car, and four coach cars, and had a total weight of approximately 4.8 MN (1,100 kips). The freight train was made up of 88 loaded cars, four empty cars, and two locomotives, and had a total weight of approximately 106 MN (24,000 kips). The trailing cars of the freight train were bulkhead flatcars carrying lumber. The last car of the freight train – the impacted car – was carrying a full load of framing lumber. This car was equipped with a hydraulic draft-cushioning device. At least two more cars of this type and load were ahead of the last car.

There was very little structural damage to the passenger cars. There was some damage to the flexible bellows between the cars closer to the lead end of the train, associated with the sawtooth lateral buckling of the first four passenger cars. There was also some scarring of the sides of the couplers and their lateral bump stops, also associated with the sawtooth buckling of the cars. The freight cars remained in-line, and the track under them did not buckle. The hydraulic cushioning devices may have helped to prevent the cars from laterally buckling, as well as the longer shanks of the freight couplers (compared with passenger couplers) and the greater weight of the freight cars.

Figure 3 shows post-accident photographs of the intercity passenger train's lead locomotive and the freight train's trailing bulkhead flatcar. It appears that crushing and displacing of the lumber on the loaded bulkhead flatcar absorbed most of the collision energy. The hydraulic cushioning devices on the trailing cars of the freight train also probably helped to dissipate some of the collision energy. (In effect, it appears that the

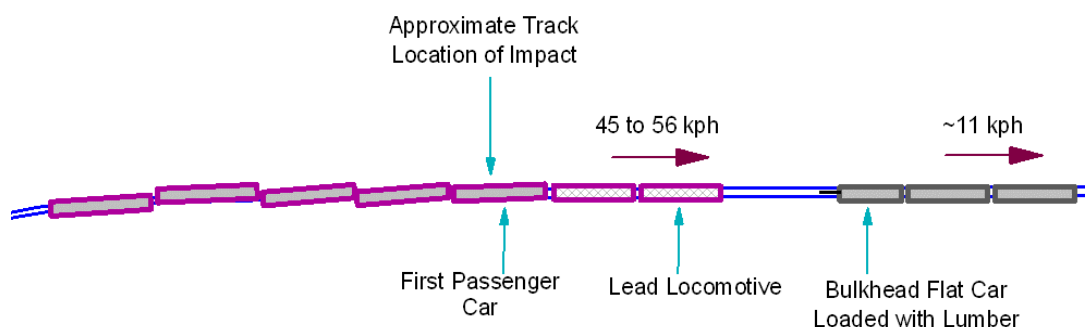


Fig. 2 Post-collision schematic drawing, rear-end collision of a freight train by an inter-city passenger train, Syracuse, New York



Fig. 3 Post-accident photographs, passenger train lead locomotive and freight train trailing loaded bulkhead flatcar, Syracuse, New York collision

hydraulic cushioning device and the lumber acted as a crash energy management system.) The body and lading of the bulkhead flatcar was crushed approximately 1.8 m (6 feet), from the trailing end of the carbody up to the trailing axle of the trailing truck. The draft sill and coupler of the bulkhead flatcar remained essentially intact, with the body and lading stripped off. The draft sill and coupler of the bulkhead flatcar acted as a battering ram which tore through the coupler and draft-gear box of the locomotive, which hang beneath the main sill structure of the locomotive. The coupler and the end of the draft sill of the flatcar impacted the front and top of the lead traction motor and front of the body bolster, helping to pry the truck from the locomotive and to push the truck back into the fuel tank. A lug on the lead truck punctured the fuel tank, causing a hole about the size of a baseball. The body of the locomotive began to climb the bulkhead flatcar, as the flatcar was crushing.

Efforts are ongoing to reconstruct the trajectories of the cars during this collision, the decelerations of the occupant volumes, and the forces and decelerations imparted to the occupants. The general behavior of the cars – the sawtooth lateral buckling – is consistent with analytic model predictions of train collisions under similar circumstances. It is likely that the environment experienced by the occupants of the passenger cars is similar to the environment measured in the trailing car during the test of two coupled cars impacting with a fixed barrier [11, 17]. The impacting car in this test sustained structural crush, while the trailing car did not. Similarly, in the accident the colliding equipment sustained structural damage, while none of the other equipment did.

2.1.2 Bourbonnais, Illinois, March 15, 1999

At approximately 9:47 pm on March 15, 1999, an intercity passenger train traveling at approximately 127 kph (79 mph) struck a highway tractor-trailer truck at a grade crossing, derailed, and then collided with an uncertain number of standing loaded freight cars in a siding. A large fire ensued, fed by the oil and fuel carried by the locomotives. The passenger train was made up of two locomotives, one baggage car, and thirteen bi-level sleeper cars and coaches, and had a total train weight of approximately 12 MN (2,600 kips). The standing freight cars included a gondola car loaded with scrap steel, and a covered hopper car loaded with fly ash, and possibly several other cars. There were 11 fatalities, all of which occurred in the second bi-level car, a sleeper car and most of which have been attributed to the fire. There were 122 injuries, ranging from severe to minor. The train had a total of 216 passengers and crew.

Figure 4 shows a post-collision schematic of the passenger train. Because of the severity of the collision, it is very difficult to infer a likely sequence of events. The collision with the highway tractor-trailer likely resulted in little structural damage to the locomotive. The lead locomotive impacted the rear wheel of the trailer. The trailer was loaded with approximately 178 kN (40 kips) of steel rebar, a relatively light load. The principal impact was probably with the loaded freight cars; the accident also appeared to have included one or more impacts with the berm on one side of the right of way.

Significant structural damage occurred to the first and second locomotives. The lead locomotive had

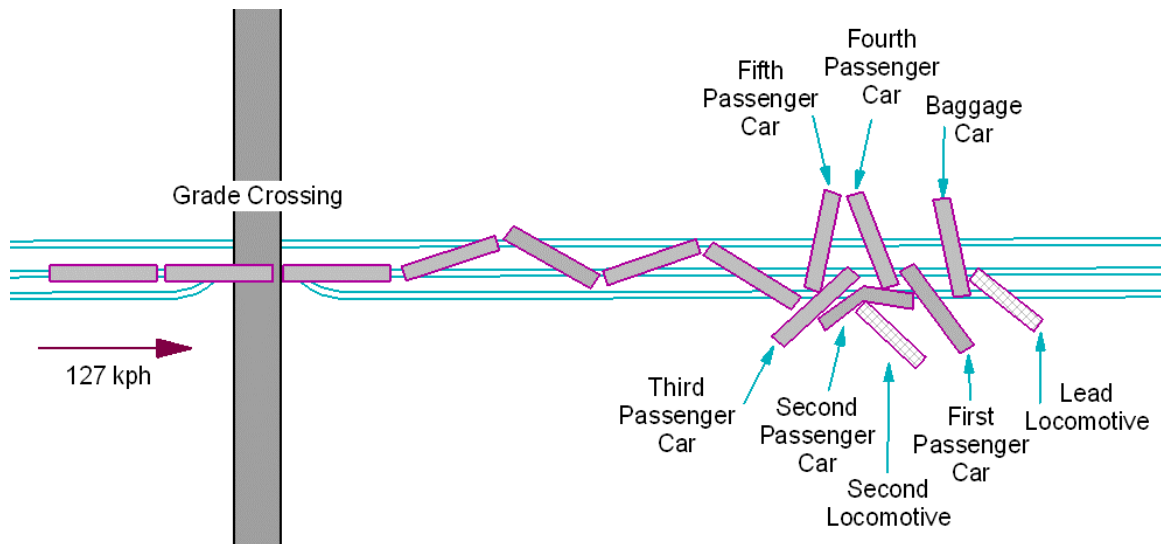


Fig. 4 Post-Collision schematic, passenger train collision with highway truck and subsequent collision with standing freight cars, Bourbonnais, Illinois

significant damage on the left side, particularly near the rear. The fuel tank in this locomotive is integral with the center portion of the frame, i.e., the side sills between the trucks make up most of the fuel tank. There were several punctures and gashes in the fuel tank. The trailing locomotive was extensively damaged. The equipment in the rear third of the locomotive was stripped off, and the trailing third of the locomotive frame was bent into the shape of a 'W.' A post-accident photograph of the second locomotive is shown in Figure 5.

The most severely damaged passenger car was the second bi-level car, shown in Figure 6. In the pile-up, this car received lateral impacts from several other cars and the second locomotive. The rear of the second

locomotive impacted it near the center of what is believed to have been the right side. There was a side-to-side impact with another bi-level car opposite the impact with the locomotive. The front of the other bi-level car impacted it on the side near the lead truck.

Qualitative comparisons of the consequences of this accident have been made with analysis results. This accident did show large amplitude zigzag buckling for the car closest to the impact, as well as smaller amplitude sawtooth buckling for the intermediate cars in the train. The trailing cars remained in line. The structural damage was focused on the cars closest to the impact point. There was very little structural damage to the fifth passenger car, or to any of the cars behind it.



Fig. 5 Post-accident photograph, second locomotive, Bourbonnais, Illinois collision



Fig. 6 Post-accident photograph, second bi-level passenger car, Bourbonnais, Illinois collision

2.1.3 Secaucus, New Jersey, February 9, 1996

On February 9, 1996, the cab car of a commuter train made up of a cab car, four coach cars, and a locomotive, struck the locomotive of another commuter train, made up of a locomotive, five coach cars and a cab car. The cab car-led train weighed approximately 3.2 MN (720 kips) and the locomotive-led train weighed approximately 3.6 MN (810 kips). There were three fatalities: the locomotive operator, the operator of the leading cab car, and a passenger in the same cab car. There were twelve serious injuries, all in the leading cab car.

Figure 7 illustrates a potential sequence of events during the collision, based on conversations with FRA and NTSB officials. It appears that the collision progressed as follows:

1. The cab car was traveling at approximately 29 kph (18 mph) when it struck the front, right corner of the locomotive, which was traveling at approximately 85 kph (53 mph) in the opposite direction. Based on the track geometry, the angle between the two vehicles at the instant of impact was approximately 7°. The corner post on the right side of the cab car struck the right side of the locomotive. Both collision posts on the cab car remained in place, though the right post incurred some structural damage. The right corner post was torn away from the cab car. The roof plate from the right side of the cab car broke away and penetrated the window of the locomotive.
2. The cab car raked down the side of the locomotive. The left rail (field side) under the locomotive rolled over and the locomotive derailed.
3. The derailed locomotive pulled the trailing cars off the track. The cab car continued to rake the cars

trailing the locomotive, damaging stairwells as it went.

4. Most cars in the locomotive-led consist derailed (the last car may have stayed on the track). Only the cab car derailed in the cab car-led consist. The cab car-led consist was stopped by the collision at the switch. The locomotive-led consist slid to a stop on the ties and ballast.

Damage occurred principally to the lead vehicles of each of the trains. A portion of the roof of the cab car penetrated the operator's window of the locomotive. Damage to the hood of the locomotive appeared to be due to the portion of the roof riding up on the hood and through the window. Some superstructure damage to the front of the locomotive, approximately halfway between the coupler and the side of the locomotive, appeared to have been caused by the front of the cab car. The main structure of the locomotive remained essentially intact. A post-collision photograph of the locomotive is shown in Figure 8.

Damage to the lead cab car includes crushing of the right, front corner of the car from the end of the car to the body bolster. This area includes the operator's compartment and approximately five rows of seats. The right (track-side) end door vertical framing member (collision post) incurred substantial damage: there are several large cracks in and around the attachment point. This damage may have occurred when the end of the transverse floor member was torn off in the initial collision with the locomotive. The collision post itself may not have been loaded directly. A post-collision photograph of the cab car is shown in Figure 9.

Seat frames in the cab car were crushed or missing from the body bolster forward on the side of impact. The seats across the aisle from the crushed seats also

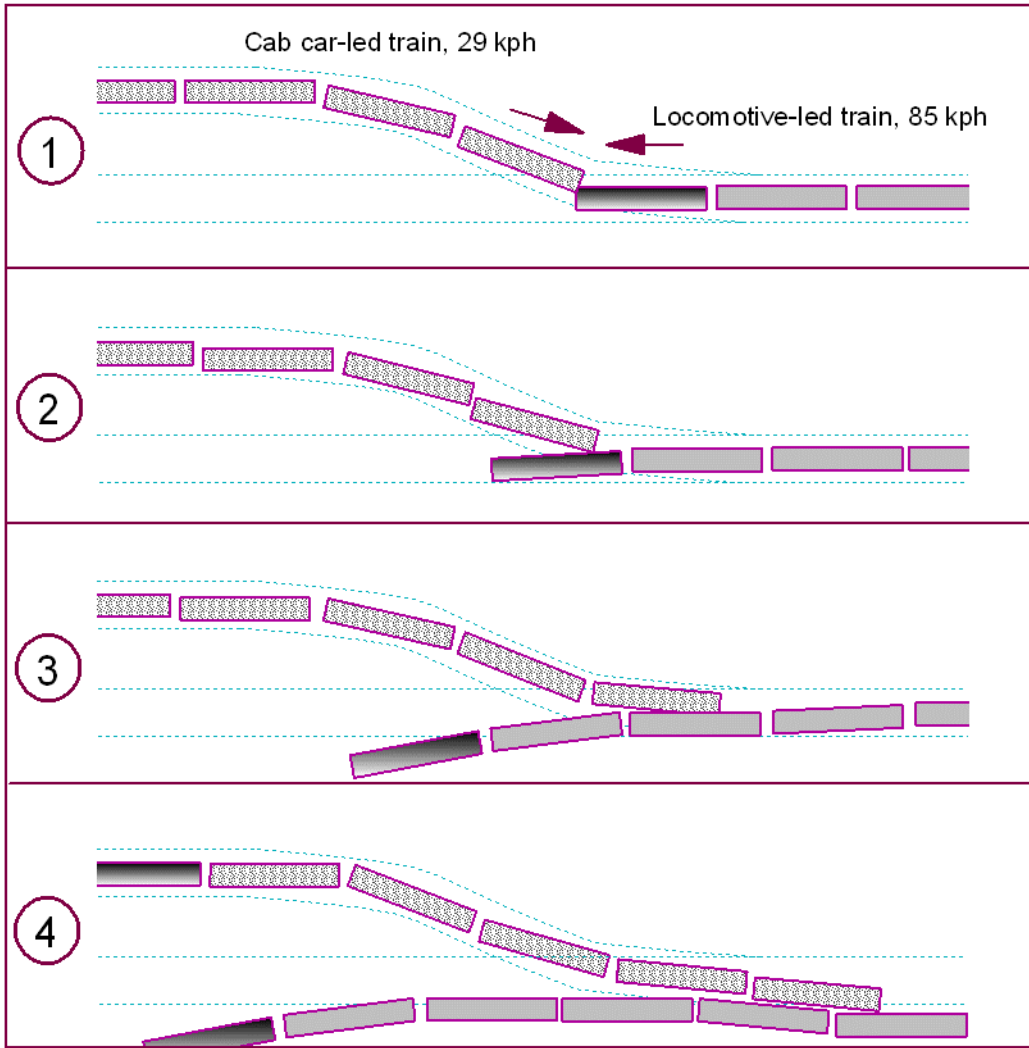


Fig. 7 Schematic of Secaucus, New Jersey, cab car/locomotive collision (hypothetical)



Fig. 8 Post-accident photograph, impacted locomotive, Secaucus, New Jersey collision



Fig. 9 Post-accident photograph, lead cab car, Secaucus, New Jersey collision

incurred substantial damage, due to debris from the collision and damage to the floor. In all, approximately 25 seat positions were destroyed during the collision. In areas away from the structurally damaged sections, the seat frames and luggage racks generally remained intact.

Car crush and train collision dynamics models have been developed to simulate the trajectories and crush of the equipment involved during this oblique collision [27, 28]. These models have been exercised to evaluate the potential benefit of modifications to the corner structure of the cab car. By increasing the maximum longitudinal load that the corner structure support at floor level from 667 to 3336 kN (150 to 750 kips), the maximum safe collision speed for the operator – the maximum collision speed for which the operator could be expected to survive – can be increased from 14.5 to 29 kph (9 to 18 mph). This increase in corner structure strength is achieved in part by eliminating the end step well and replacing it with a structural element; this increase in strength correspondingly increases the amount of energy that can be absorbed by the crush of the corner structure. The maximum safe speed for the passengers – the maximum collision speed for which all the passengers, but not the operator, could be expected to survive – increases from 31 kph to 51 kph (19 to 32 mph). Efforts are planned to evaluate the potential effectiveness of a completely re-designed end structure.

2.1.4 Silver Spring, Maryland, February 16, 1996

On February 16, 1996, a cab-car led commuter train, with two coach cars and a locomotive collided nearly head-on with an intercity train made up of two

locomotives and 15 baggage and passenger cars. The commuter train weighed approximately 2.7 MN (600 kips) and the inter-city train weighed approximately 9.6 MN (2200 kips). The lead locomotive of the inter-city train was just starting through a switch to an adjacent track, traveling at approximately 48 kph (30 mph), when it struck the commuter train, traveling at approximately 64 kph (40 mph) in the opposite direction. There were eleven fatalities and twenty-six injured passengers, all on the commuter train. Three of the fatalities are believed to be the result of the collision, and eight are believed to be the result of the post-collision fire.

It appears that the collision progressed in several steps, which are illustrated Figure 10:

1. The lead cab car of the commuter train struck the front of the lead locomotive of the inter-city train. The locomotive of the inter-city train had just started to traverse a switch, and consequently the cab car and locomotive were misaligned when the collision started. The coupler of the cab car was approximately aligned with the side of the locomotive. The cab car subsequently raked along side of the locomotive, tearing off and rupturing the locomotive fuel tank. The difference in main structure heights between the locomotive and the cab car allowed the cab car underframe to shear off the equipment hung beneath the underframe of the locomotive and the locomotive underframe to tear the carbody skin above the side sill from the cab car.
2. The impact with the cab car nearly aligned the lead locomotive of the inter-city train with the direction of the track, but displaced the cab car laterally (to the right in the figure). The front of the lead

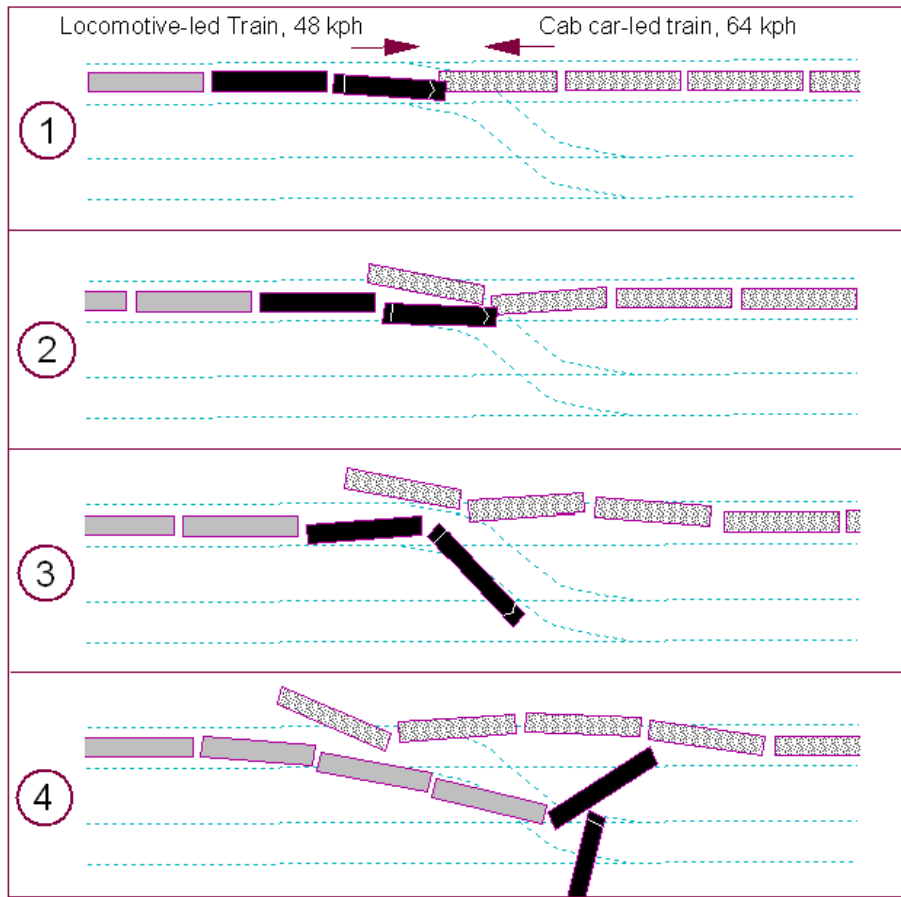


Fig. 10 Schematic of Silver Spring, Maryland, cab car/locomotive collision (hypothetical)

locomotive of the inter-city train struck the front of the second car in the commuter train. This interaction started the front of the lead locomotive of the inter-city train moving to the side (toward the left in the figure)

3. The lead locomotive of the inter-city train separated from its lead truck and began to plow the earth while the second locomotive continues to push. The second locomotive of the inter-city train, in combination with the (small) lateral displacement due to the interaction with the second car of the commuter train, acted to turn the lead locomotive of the inter-city train clockwise. The impact between the lead locomotive of the inter-city train and the second car of the commuter train, in combination with the commuter train being pushed by its locomotive, resulted in the third car of the commuter train derailed (to the right in the figure).
4. The front of the lead locomotive of the inter-city train continued to plow; the couplers between the lead and second locomotives broke. The lead locomotive eventually turned clockwise approximately 270°. The remaining equipment slid to a stop.

A post-collision photograph of the cab car is shown in Figure 11. In the photograph, the cab car is sitting on a flatcar and the windows visible in the photograph are on the far-side of the cab car. The wire frames in the photograph are the metal remains of the seat frames and other interior fixtures; essentially all non-metal interior components were destroyed in the fire. There is extensive fire damage to the car, in addition to the collision damage. The structural damage to the second commuter car is similar to the damage done to the cab car, although there is little fire damage to the second car. The left side of the second car is crushed from the end of the car to the body bolster, although both collision posts are intact.

The damage done to the lead locomotive of the intercity train includes puncture of the hood and removal of the equipment hung under the left (track) side of the locomotive, including the fuel tank. There is little damage to any of the main structural components of the locomotive. The operator's cab remained essentially intact, although both windshields were broken. A post-collision photograph of the lead locomotive is shown in Figure 12.

Damage to the second locomotive of the inter-city train occurred after the couplers between the two locomotives broke and the rear of the lead locomotive



Fig. 11 Post-accident photograph, lead cab car, commuter train, Silver Spring, Maryland collision



Fig. 12 Post-accident photograph, lead locomotive, inter-city train, Silver Spring, Maryland collision

scraped past the side of the second locomotive and when the second locomotive of the inter-city train hit the locomotive of the commuter train, near the end of the collision. The second locomotive of the inter-city train was being run backward. No significant structural damage occurred. Sheet metal damage also occurred at the rear of the second locomotive of the inter-city train, apparently due to the collision with the locomotive of the commuter train.

Models to simulate this accident have not been developed. However, some of the information from this accident was used in developing the model of the Secaucus accident. In the Silver Spring accident, the main structures did engage, at least briefly. Unlike the Secaucus accident, there was damage to the coupler and draft sill of the cab car. Like the Secaucus accident, the impacting locomotive and cab car deflected past each other.

2.2 Collisions with Objects

The category of Collisions with Objects includes any collision between a train and something other than a train, such as a collision with highway vehicles at a grade crossing, as well as a collision with a displaced intermodal trailer fouling the right of way. Two accidents are described in this section:

1. Portage, Indiana, June 18, 1998 [29]
2. Selma, North Carolina, May 16, 1994 [30]

2.2.1 Portage, Indiana, June 18, 1998

On June 18, 1998, a cab car led, two-car multiple-unit commuter train collided with a highway truck trapped at a grade crossing. The highway truck consisted of a tractor with two trailers. The trailers were loaded with coils of sheet steel. The second trailer, the one furthest from the tractor, was stopped on the tracks. The train

collided with the second trailer, and during the impact a coil of steel broke free and punctured the end of the car. The train weighed approximately 950 kN (220 kips) and was traveling at a speed between 69 and 109 kph (43 and 68 mph) when it hit the highway truck. As a result of the collision, three people were killed: a deadheading railroad employee and two passengers. The initial conditions of the accident are shown schematically in Figure 13.

Figure 14 shows post-accident photographs of the cab car, the highway truck trailer, and the coil of steel. The coil of steel weighed approximately 178 kN (40 kips), and was about 1.8 m (6 feet) in diameter. It received little damage during the collision. The height of the floor of the trailer was several inches below the height of the floor of the cab car. Owing to the shape of the coil, it moved upward when it hit the end of the cab car. As shown in the photograph, the coil of steel punctured

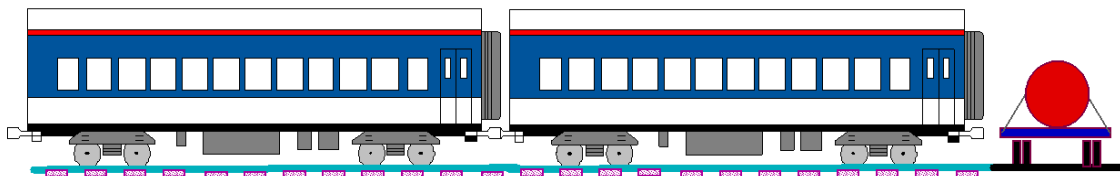


Fig. 13 Schematic drawing of Portage, Indiana grade crossing collision



Fig. 14 Post-collision photographs, cab car, truck trailer, and steel coil involved in Portage, Indiana grade crossing collision

the end of the cab car. The coil stopped inside the cab car after traveling about half its length, destroying about one-quarter of the passenger seats in the car.

A simulation model has been developed based on this accident, to evaluate the influence of structural modifications on the consequences of the accident [8]. The results of analyses conducted with this model indicate that using the lateral end frame members to support the vertical end frame members can significantly increase the crashworthiness of the cab car. Increased strength of the end structure lateral member near roof level (the anti-telescoping plate) allows more effective distribution of the load and the crush among the end structure vertical members when one vertical member is loaded. By integrating the end structure and by increasing the strength of the end door vertical framing members (collision posts) by 25%, the maximum safe collision speed for the operator can be increased from 19 to 31 kph (12 to 19 mph) in a collision similar to the Portage, Indiana grade crossing collision. With the same modifications, the maximum safe speed for the passengers can be increased from 32 to 48 kph (20 to 30 mph).

2.2.2 Selma, North Carolina, May 16, 1994

An overhanging intermodal trailer on the northbound freight train was obstructing the right of way of the southbound intercity passenger train. The passenger train weighed approximately 4.8 MN (1100 kips). The northbound freight train was traveling approximately 56 km/h (35 mph) and the southbound passenger train was traveling about 120 km/h (75 mph). The forward trailer,

weighing approximately 270 kN (60 kips), on the 51st car was overhanging the southbound track and engaged the lead locomotive of the passenger train. At the onset of contact, the trailer was above the deck and offset outside of the collision posts of the passenger train lead locomotive. The assistant engineer was killed during the accident and the engineer was severely injured. Figure 15 schematically depicts the conditions that initiated the oblique impact.

Damage to the short hood began at the right front corner and extended along the right side to the control compartment. The lead locomotive in the passenger train derailed and rolled over, coming to rest on its left side. All but one of the trailing cars, as well as the second locomotive, left the track, but remained upright. Only the last two cars in the freight train derailed and were damaged. The trailer, which was full of cat litter, burst open, spilling its contents along the track. The flatcar carrying the intruding trailer came to rest about 12 m (40 ft) off the track in an upright position with the deck and end bent. Figure 16 schematically depicts the conditions immediately after the accident.

Figure 17 illustrates the damage to the locomotive from the impact with the container. The container initially impacted the sheet metal of the short hood approximately 229 mm (9 in) from the side of the locomotive. The damage extended back approximately 2.3 m (7.5 ft). For approximately the first 1.5 m (5 ft), the principal damage was to the short hood. For the remaining 0.8 m (2.5 ft) the principal damage included deformation of the sub-base and the sheet metal on the

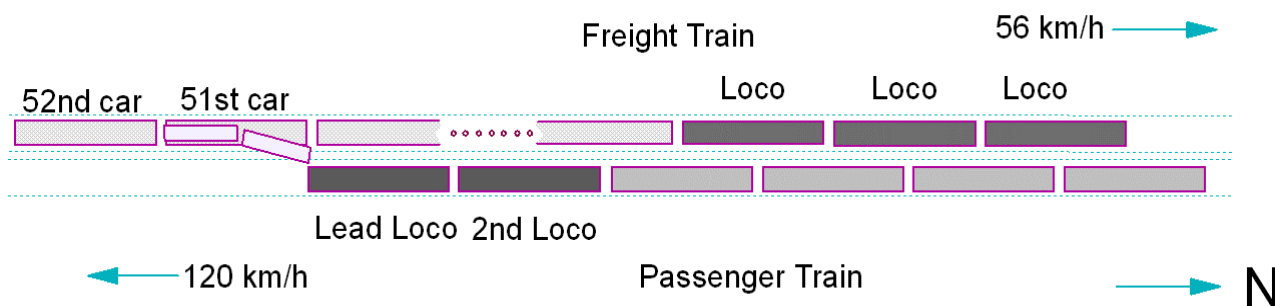


Fig. 15 Schematic drawing, initial conditions of Selma, North Carolina oblique collision.

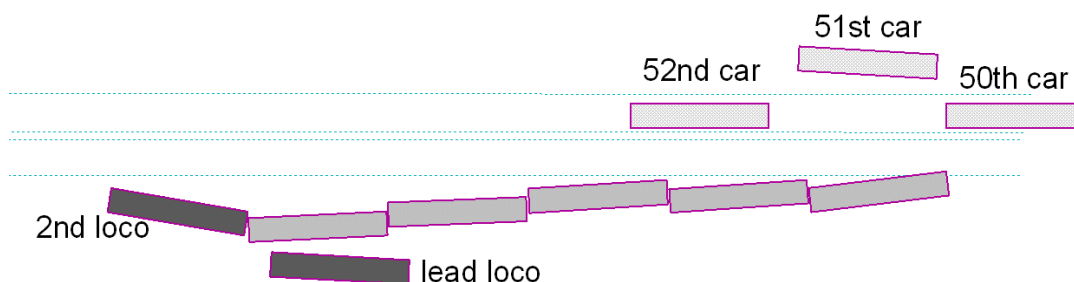


Fig. 16 Schematic drawing, final conditions of Selma North Carolina oblique collision.

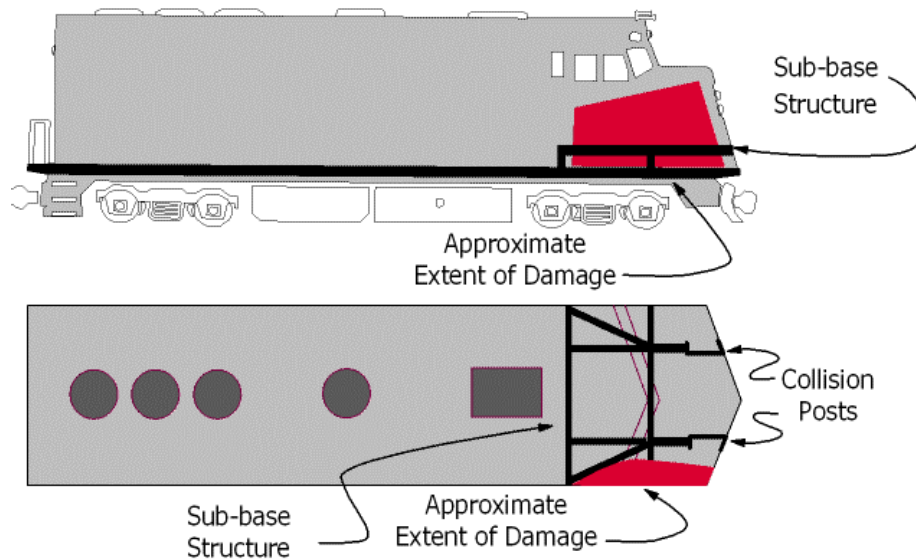


Fig. 17 Schematic drawing, locomotive damage from impact with intermodal trailer, Selma, North Carolina oblique collision.

side of the operator's cab. The sub-base was the structure that provides the floor for the operator's cab and, beneath the floor, space for batteries and other ancillary equipment.

Potential modifications to improve the crashworthiness of locomotive designs have been evaluated with locomotive crush and train collision dynamics models, which simulate this oblique collision [31, 32]. These modifications consist principally of changes in the short hood material properties and thickness. The maximum safe closing speed for the locomotive operator can be increased from 56 to 153 kph (35 to 95 mph) by increasing the maximum strength crush strength of the short hood when it is loaded on the outboard corner from 445 to 1779 kN (100 to 400 kips).

2.3 Single Train Events

Single train events such as derailments can result in the cars rolling on their sides or roofs. Such events are not generally associated with significant structural damage to the cars or loss of occupant volume due to structural crushing of the cars. Derailments can be associated with a large number of injuries, and, often depending on the post-derailment conditions, fatalities. Injuries such as those that have occurred during derailments can be mitigated with occupant protection measures. Efforts are underway to better understand the environment experienced by the occupants during a derailment, and to develop strategies for better protecting the occupants. Because there has been little structural damage in single train events, and detailed information on where occupants were and the mechanics of how they were injured has not yet been developed, the accident descriptions in this section are briefer than in preceding sections.

On September 22, 1993, around 2:53 am, a catastrophic accident occurred outside Mobile, Alabama on Big

Bayou Canot Bridge [33]. Shortly before the train passed over the bridge, a river barge and tug boat struck the bridge, and moved the tracks out of alignment. As a result, many of the cars of the long-haul inter-city train ended up in the river. 42 passengers and 5 crewmembers were killed, principally by drowning. There were also 103 injuries. The train was carrying 220 passengers and crew. Little can be done with traditional occupant protection measures to mitigate the consequences of such an accident.

Single train events for which occupant protection measures may potentially help to mitigate the consequences include the derailment that occurred in Batavia, New York, on August 3, 1994 [24] and in Kingman Arizona on August 9, 1997 [20].

In the Batavia accident, the train derailed owing to a flattened rail head. The long-haul inter-city train was traveling at 127 kph (79 mph) when it derailed at 3:44 am. As a result of the derailment, most of the cars rolled onto their sides and down an embankment. There were 25 serious injuries, with a total of 10 crew and 108 passengers were injured. The train was carrying 19 crewmembers and 320 passengers.

In the Kingman accident, the train derailed owing to washed out bridge supports. The long-haul inter-city train was traveling at 143 kph (89 mph) when it derailed at 5:56 am. The train remained mostly intact, and all the cars remained upright. Four locomotives were hauling the train, and the lead three locomotives did uncouple from the rest of the train. After the bridge, the train tore up the much of the rails and ties. Many of the cars buckled in the sawtooth pattern. Of 294 passengers, there were 173 injured, 24 of them seriously. Of 18 crewmembers, there were 10 injured, 1 seriously.

In addition to gathering more information on how occupants are injured during derailments, efforts have also been initiated to determine the decelerations experienced by the occupants and to analyze the

response of occupants in the interior during these decelerations. Derailments such as the one in Batavia can generate a large lateral deceleration when the car rolls onto its side and impacts the ground. The interior may present a potentially hostile environment under such circumstances.

3 DISCUSSION

Fatalities and injuries occur in passenger train collisions and derailments. In the eleven-year period from 1985 to 1995, 130 people were killed and 6,239 people were injured in inter-city and commuter passenger train accidents in the United States [6]. There are 0.4 fatalities per billion passenger-kilometers, in comparison with 6 fatalities per billion passenger-kilometers for automobiles and 0.15 fatalities per billion passenger-kilometers for aircraft [5].

The accidents themselves guide efforts to determine how the accidents unfolded, and to determine what features may provide improved occupant protection. Statistics do not necessarily provide a good basis for predicting the future. Both the types of accidents and the frequency may vary significantly from the past. Changes in the system, such as increased traffic, increased equipment speed, and increased size can significantly alter the potential for accidents. Amtrak has recently introduced the high-speed Acela trainset for service from Boston to New York to Washington, with speeds up to 240 kph (150 mph). The Maryland Area Rail Commuter Service has recently introduced commuter service at speeds up to 200 kph (125 mph). Commuter rail service has recently been started in Seattle, Washington. Increasing traffic densities, increased equipment speed, and increasing size of the passenger rail system continue to generate a high level of concern about collision safety.

Ongoing research into rail equipment crashworthiness extends from field investigations of the causes of occupant injury and fatality in train accidents, to full-scale testing of existing and modified designs under conditions intended to approximate accident conditions.

The objective of the field investigations is to develop potential means of increased occupant protection in accidents by determining the types of injuries that occur in train accidents, the locations on the train where the occupants were injured, and the mechanisms that potentially caused the injuries. This study is part of the effort to reduce injuries in train accidents.

Information from the accidents that occurred in Bourbonnais, Illinois, and Silver Spring, Maryland, which are both described in this paper, as well as other accidents, has been used to plan a series of tests. These tests are intended to measure the crashworthiness performance of existing design equipment and to

measure the performance of equipment incorporating crushable end structures [36]. The collision scenario addressed by these tests is a locomotive-led passenger train colliding with a cab car led passenger train on tangent track. The tests planned for each equipment type are as follows:

1. Single-car impact into a fixed barrier
2. Two coupled car impact into a fixed barrier
3. Cab car-led train collision with standing locomotive-led train

The overall objectives of these tests are to demonstrate the effectiveness of

- (a) improved-crashworthiness cab car structural designs
- (b) improved-crashworthiness coach car structural designs
- (c) improved-crashworthiness passenger and operator interior configurations

To date, the first two tests for existing-design equipment have been conducted. The third test, to complete the characterization of the performance of existing design equipment in an in-line collision, is tentatively planned for July 2001. Testing of improved crashworthiness design equipment, incorporating crushable end structures, is planned to start in the fall of 2002.

A similar series of tests to evaluate the effectiveness of existing equipment and modified equipment under conditions intended to approximate a grade crossing collision is being planned. The test scenario will be based on information from the accident in Portage, Indiana, which is described in this paper, along with information from other accidents.

The information from the crashworthiness research has been used to develop federal safety regulations and industry standards and recommended practices for passenger equipment. It is expected that the results of the field investigations of the causes of occupant injury and fatality in train accidents, the full-scale testing of existing and modified designs under conditions intended to approximate accident conditions, and other ongoing research will be used in the future development of North American passenger equipment regulations, standards, and recommended practices.

4 ACKNOWLEDGEMENTS

This work described in this paper was performed as part of the Equipment Safety Research Program sponsored by the Office of Research and Development of the Federal Railroad Administration. The author would like to thank Dr. Tom Tsai, Program Manager, and Ms. Claire Orth, Division Chief, Equipment and Operating Practices Research Division, Office of Research and Development, Federal Railroad Administration, for their

support. The author would also like to thank Mr. Grady Cothen, Deputy Associate Administrator for Safety Standards and Program Development for his support and assistance in investigating accidents. Finally, the author would like to thank Ms. Kristine Severson, Senior Engineer, Volpe Center, Mr. Eloy Martinez, Senior Engineer, Volpe Center, and Professor A. Benjamin Perlman, Tufts University, for reviewing this paper.

REFERENCES

- 1 *Improving Railroad Safety and Rail Passenger Technology through Targeted Research and Demonstrations, 1992-1997*, August 1999, DOT/FRA/ORD-99/02 (Office of Research and Development, Federal Railroad Administration, US Department of Transportation).
- 2 *49 CFR Part 216 et al, Passenger Equipment Safety Standards; Final Rule*, May 12, 1999, (Federal Railroad Administration, US Department of Transportation).
- 3 **Tyrell, D.**, U.S. Rail Equipment Crashworthiness Standards. *Proc. Onstn Mech. Enggrs, Part F, Journal of Rail and Rapid Transit*, 2002, **216**(F2), 123-130.
- 4 **Bing, A.**, "Collision Avoidance and Accident Survivability, Volume 1: Collision Threat", March 1993, DOT/FRA/ORD-93-02.1, Federal Railroad Administration, US Department of Transportation.
- 5 **Bing, A.**, "An Approach to Evaluating Railroad Risks," A. Bing, page I-1-25. Rail Vehicle Crashworthiness Symposium, March 1998, DOT/FRA/ORD-97/08, Federal Railroad Administration, US Department of Transportation.
- 6 **Mayville, R.A., Stringfellow, R.G., Rancatore, R.J., Hosmer, T.P.**, "Locomotive Crashworthiness Research, Volumes 5: Cab Car Crashworthiness Report", 1996, DOT/FRA /ORD-95 /08.5, Federal Railroad Administration, US Department of Transportation.
- 7 **Mayville, R.A., Rancatore, R.J., Tegler, L.**, "Investigation and Simulation of Lateral Buckling in Trains," Proceedings of the 1999 IEEE/ASME Joint Railroad Conference, April 13-15, 1999, ASME RTD Volume 16, 1999, American Society of Mechanical Engineers.
- 8 **Stringfellow, R.G., Mayville, R.A., Rancatore, R.J.**, "A Numerical Evaluation of Protection Strategies for Railroad Cab Car Crashworthiness," Proceedings of the 8th ASME Symposium on Crashworthiness, Occupant Protection and Biomechanics in Transportation November 14-19, 1999; Nashville, Tennessee, 1999, American Society of Mechanical Engineers.
- 9 **Tyrell, D., Severson, K., Perlman, A.B.**, March, 2000, "Single Passenger Rail Car Impact Test Volume I: Overview and Selected Results", March 2000, DOT/FRA/ORD-00/02.1, Federal Railroad Administration, US Department of Transportation.
- 10 **Severson, K.**, "Development of Collision Dynamics Models to Estimate the Results of Full-scale Rail Vehicle Impact Tests", November 2000, Master's Thesis, Tufts University.
- 11 **Severson, K., Tyrell, D., Perlman, A.B.**, "Rail Passenger Equipment Collision Tests: Analysis of Structural Measurements," presented at the 2000 International Mechanical Engineering Congress and Exposition, November 6, 2000, Orlando, Florida, American Society of Mechanical Engineers.
- 12 **Tyrell, D.C., Severson, K.J., Marquis, B.J.**, "Train Crashworthiness Design for Occupant Survivability," ASME International Mechanical Engineering Congress and Exposition, 1995, AMD-Vol. 210, BED-Vol. 30, pp. 59-74, American Society of Mechanical Engineers.
- 13 **Tyrell, D.C., Severson, K.J., Marquis, B.J.**, "Evaluation of Selected Crashworthiness Strategies for Passenger Trains," Transportation Research Record 1489, Rail, pp. 50-58, 1995, Transportation Research Board.
- 14 **Tyrell, D.C., Severson, K.J., Marquis, B.J.**, "Analysis of Occupant Protection Strategies in Train Collisions," ASME International Mechanical Engineering Congress and Exposition, 1995, AMD-Vol. 210, BED-Vol. 30, pp. 539-557, American Society of Mechanical Engineers.
- 15 **Tyrell, D., Severson, K.J.**, "Crashworthiness Testing of Amtrak's Traditional Coach Seat", October 1996, DOT/FRA/ORD-96/08, Federal Railroad Administration, US Department of Transportation.
- 16 **VanIngen-Dunn, C.**, "Single Passenger Rail Car Impact Test Volume II: Summary of Occupant Protection Program", March 2000, DOT/FRA/ORD-00/02.2, Federal Railroad Administration, US Department of Transportation.
- 17 **Tyrell, D., Zolock, J., VanIngen-Dunn, C.**, "Rail Passenger Equipment Collision Tests: Analysis of Occupant Protection Measurements," presented at the 2000 International Mechanical Engineering Congress and Exposition, November 6, 2000, Orlando, Florida, American Society of Mechanical Engineers.
- 18 **National Transportation Safety Board**, "Rear-End Collision of Amtrak Passenger Train 94, The Colonial and Consolidated Rail Corporation Freight Train ENS-121, on the Northeast Corridor, Chase, Maryland January 4, 1987", January 1988, RAR-88-01.
- 19 **National Transportation Safety Board**, "Head On Collision of National Railroad Passenger Corporation (Amtrak) Passenger Trains Nos. 151 and 168, Astoria, Queens, New York, NY, July 23, 1984", May 1985, RAR-85-09.
- 20 **National Transportation Safety Board**, "Derailment of Amtrak Train 4, Southwest Chief, on the Burlington Northern Santa Fe Railway near Kingman, Arizona August 9, 1997", 1998, RAR-98-03.
- 21 **Tyrell, D.C., Severson, K.J., Marquis, B.J.**, "Train Crashworthiness Design for Occupant Survivability," International Mechanical Engineering Congress and Exposition, 1995, AMD-Vol. 210, BED-Vol. 30, pp. 59-74, American Society of Mechanical Engineers.
- 22 **Scholes, A., and Lewis, J.**, "Development of Crashworthiness for Railway Vehicle Structures", Proceedings of the Institute of Mechanical Engineers, Vol. 207 Part F: Journal of Rail and Rapid Transit, 1993, Institute of Mechanical Engineers.
- 23 **Lacôte, F., Cléon, L.-M., Lagneau, H., Dannawi, M., Demonsant, E., Wiart, A.**, "Les Tolérances à la Collision Des Matériaux Ferroviaires," *Revue générale des chemin de fer*, 1993, Gauthier-Villars.
- 24 **Ohnishi, T., Kawakami, N., Sano, A.**, "Crashworthiness of Train," The International Conference on Speedup Technology for Railway and Maglev Vehicles, Vol. I, PS2-15, 1993, Japanese Society of Mechanical Engineers.
- 25 **National Transportation Safety Board**, "Railroad Accident Report Near Head-on Collision and Derailment of Two New Jersey Transit Commuter Trains Near Secaucus, New Jersey February 9, 1996", 03/25/1997, RAR-97-01.
- 26 **National Transportation Safety Board**, "Collision and Derailment of Maryland Rail Commuter MARC Train 286 and National Railroad Passenger Corporation AMTRAK Train 29 Near Silver Spring, MD February 16, 1996", 06/17/1997, RAR-97-02.

- 27 Tyrell, D.C., Severson, K.J., Mayville, R.A., Stringfellow, R.G., Berry, S., Perlman, A.B., "Evaluation of Cab Car Crashworthiness Design Modifications," Proceedings of the 1997 IEEE/ ASME Joint Railroad Conference, 1997, Catalog Number 97CH36047, Institute of Electrical and Electronics Engineers.
- 28 Mayville, R.A., Hammond, R.P., Johnson, K.N., "Static and Dynamic Crush Testing and Analysis of a Rail Vehicle Corner Structural Element," Proceedings of the 8th ASME Symposium on Crashworthiness, Occupant Protection and Biomechanics in Transportation November 14-19, 1999, American Society of Mechanical Engineers.
- 29 National Transportation Safety Board, "Collision of Northern Indiana Commuter Transportation District Train 102 with a Tractor-Trailer Portage, Indiana June 18, 1998", 07/26/1999, RAR-99-03.
- 30 National Transportation Safety Board, "Amtrak Train 87 Derailment after Colliding with Intermodal Trailer from CSXT Train 176 Selma, North Carolina May 16, 1994", adopted on 03/21/1995, RAR-95-02.
- 31 Tyrell, D.C., Martinez, E.E., Wierzbicki, T., "Crashworthiness Studies of Locomotive Wide Nose Short Hood Designs," Crashworthiness, Occupant Protection and Biomechanics in Transportation Systems, 1999, AMD Vol. 237/BED Vol. 45, American Society of Mechanical Engineers.
- 32 Tyrell, D., Severson, K., Marquis, B., Perlman, A.B., "Simulation of an Oblique Collision of a Locomotive and an Intermodal Container," Crashworthiness, Occupant Protection and Biomechanics in Transportation Systems, 1999, AMD Vol. 237/BED Vol. 45, American Society of Mechanical Engineers.
- 33 National Transportation Safety Board, "Derailment of Amtrak Train No. 2 on the CSXT Big Bayou Canot Bridge Near Mobile, Alabama September 22, 1993", 09/19/1994, RAR-94-01.
- 34 National Transportation Safety Board, "Derailment of Amtrak Train 49 On Conrail Trackage Near Batavia, New York on August 3, 1994", 07/11/1996, RAR-96-02.
- 35 Peacock, T., "The Need for Rail Passenger Equipment Structural Standards", page 1-2-15, Rail Vehicle Crashworthiness Symposium, March 1998, DOT/FRA/ORD-97/08, Federal Railroad Administration, US Department of Transportation.
- 36 Tyrell, D., Severson, K., Perlman, A.B., Brickle, B., VanIngen-Dunn, C., "Rail Passenger Equipment Crashworthiness Testing Requirements and Implementation," presented at the 2000 International Mechanical Engineering Congress and Exposition, November 6, 2000, American Society of Mechanical Engineers.