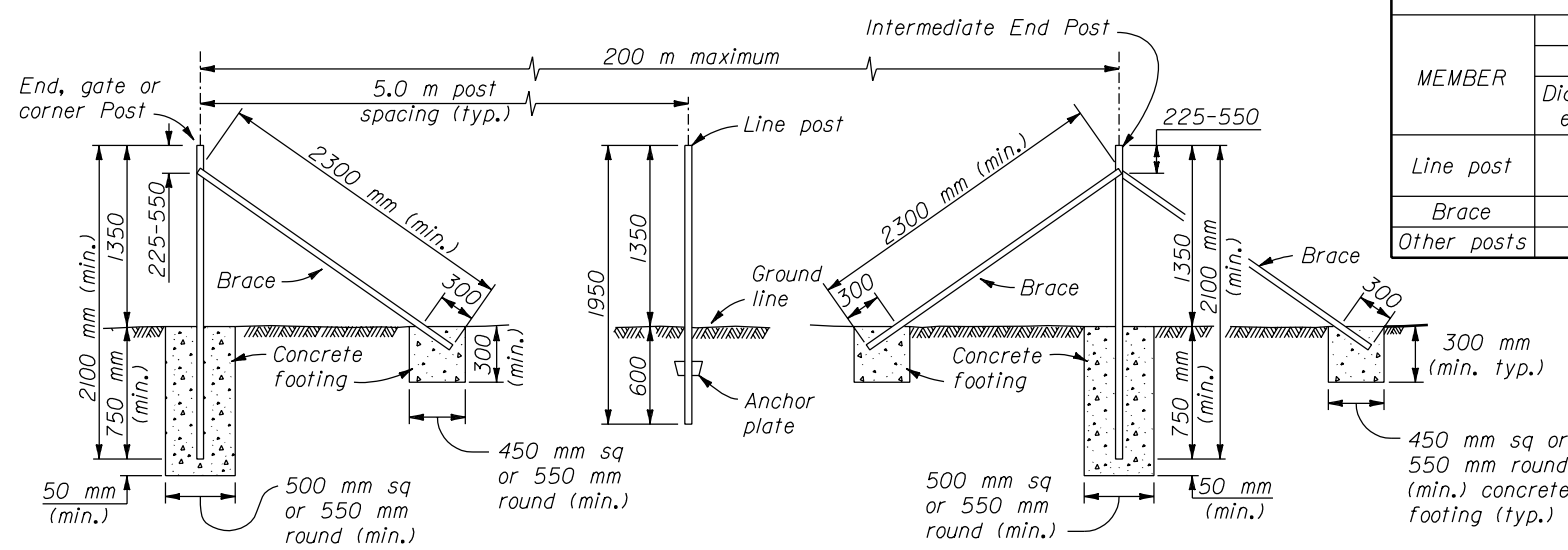


- NOTE:**
- Dimensions not labeled are in millimeters.
 - Furnish either zinc coated (galvanized) or aluminum coated steel barbed wire. Fabricate zinc coated barbed wire with a Class 1 zinc coating except on 1.70 mm strand wire use a Class 3 zinc coating. Provide either 2 point or 4 point barbs of 2.03 mm zinc coated wire. Fabricate aluminum coated barbed wire with 4 point barbs of 2.03 mm aluminum coated or aluminum alloy wire. Use strand wire with a minimum breaking strength of 430 kg.
 - Furnish 2.51 mm or heavier gage tie wire or wire clamps for fasteners in metal posts and 3.61 mm by 45 mm long wire staples of the barbed U-shape type for wood posts and wood stays. Galvanize wire stays, tie wire, wire loops, and wire clamps with a Class 1 zinc coating according to ASTM A 641.
 - Furnish either painted or galvanized steel fence posts, braces and anchor plates.
 - Fabricate metal fence stays from 3.61 mm wire twisted to form a 2-wire unit. Place stays halfway between posts. Use wire stays on all fences unless wood stays are specified. When specified, provide either 50 mm round, rough sawn 50x50 mm or 50x100 mm (S4S) wood stays of sufficient length to be placed on the ground with the top of the stay extending 50 mm above the top wire. Attach each wire to the stay using wire staples.
 - Furnish Douglas fir, Western larch, Lodgepole or Ponderosa pine for fence posts, brace rails, and wood stays if applicable. Treat the posts and brace rails with pentachlorophenol, ACZA, or CCA, Type I, A, B, or C.

FENCES

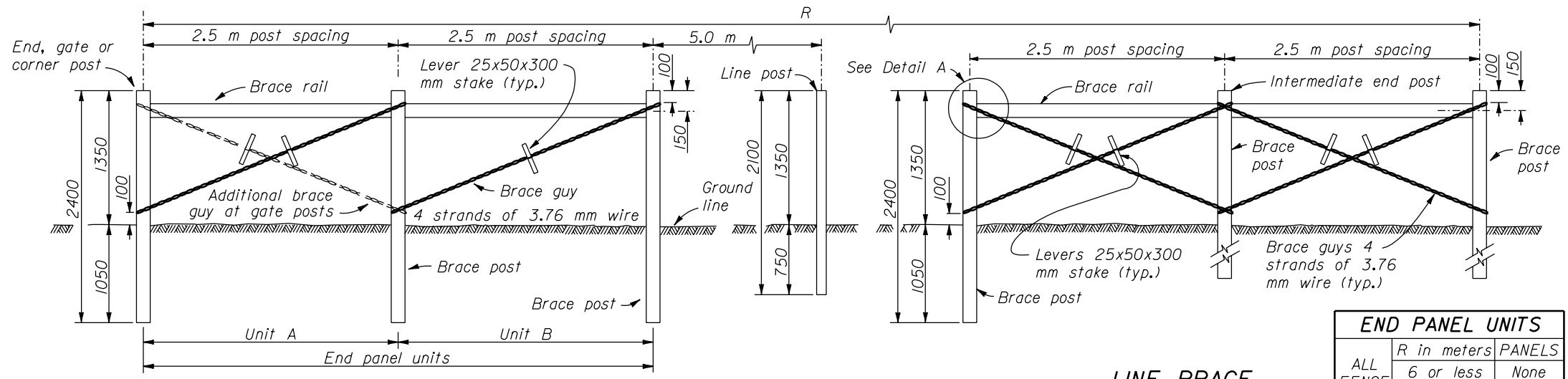
MEMBER	WOOD		STEEL		
	ROUND	SQUARE	SHAPE	kg/m (min.)	SIZE
	Di. of small end (min.)	SIZE			
Line post	100	100x100	Tee, channel or U-bar	1.98	U.S. Comm. Standard
Brace	150	150x150	Angle	3.63	51x51x6.4 mm
Other posts	150	150x150	Angle	6.10	64x64x6.4 mm



END, GATE OR CORNER BRACE

STEEL POSTS

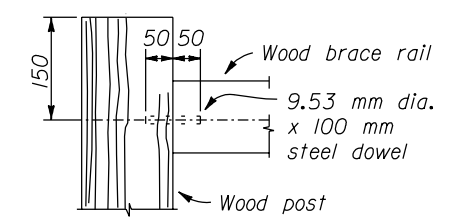
LINE BRACE



END, GATE OR CORNER BRACE

WOOD POSTS

LINE BRACE



DETAIL A

END PANEL UNITS		
ALL FENCE TYPES	R in meters	PANELS
	6 or less	None
	6 - 100	A
	Over 100	A & B

NO SCALE

U.S. DEPARTMENT OF TRANSPORTATION
 FEDERAL HIGHWAY ADMINISTRATION
 WESTERN FEDERAL LANDS HIGHWAY DIVISION

METRIC DETAIL

MONTANA FENCE

DETAIL APPROVED FOR USE 3/1996
 REVISD: 5/2000

DETAIL
WM619-60

13 DEC 2000 f:\standrow\metric\details\wm61960.dgn