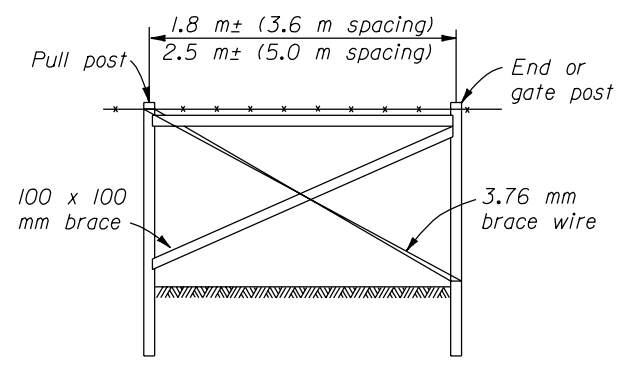
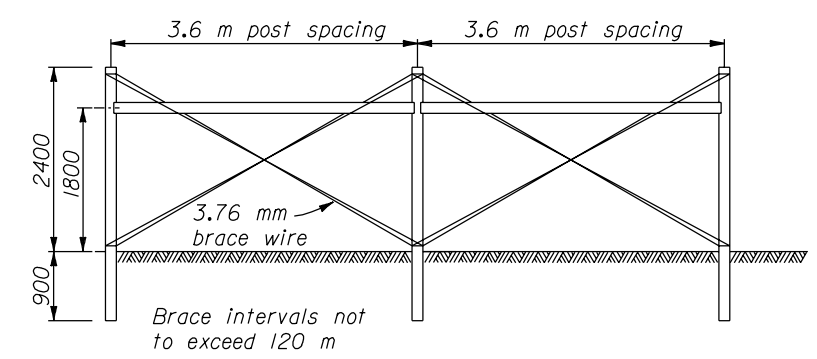


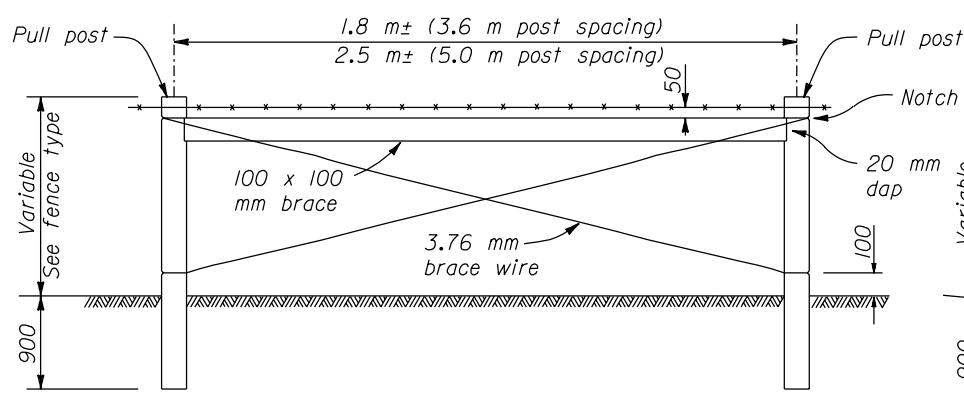
METAL END AND GATE BRACE



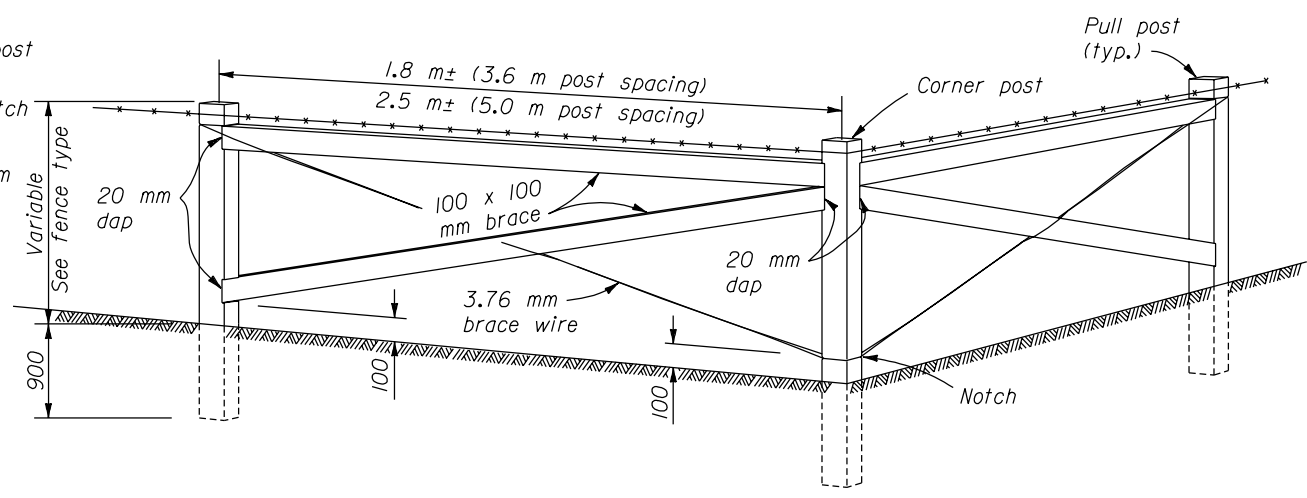
WOOD END AND GATE BRACE



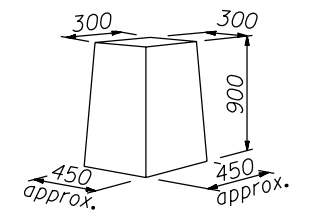
WOOD LINE BRACE FOR TYPE 8 FENCE



WOOD LINE BRACE

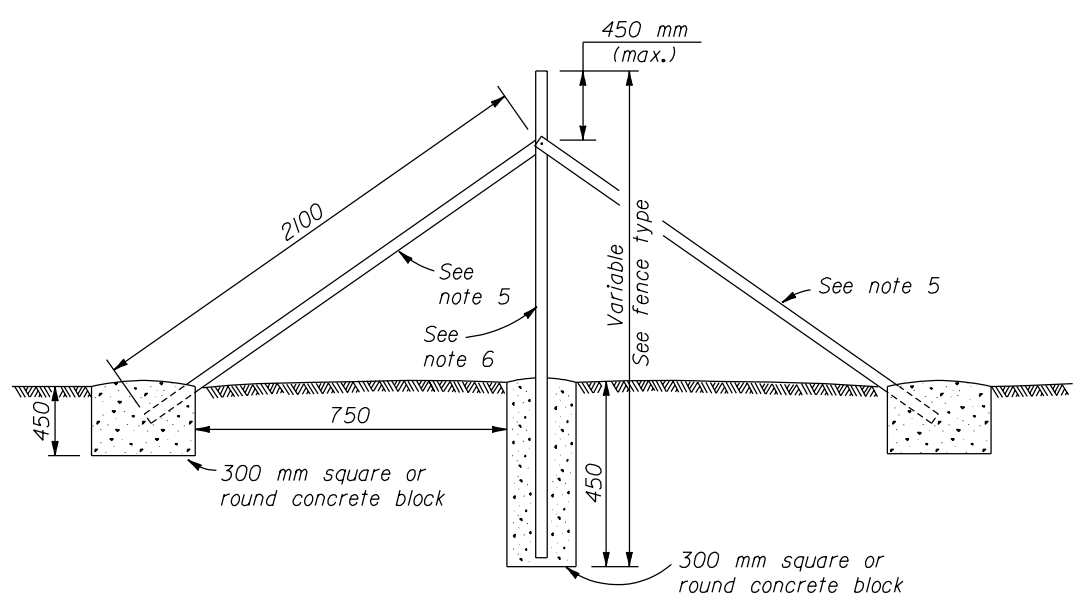


WOOD CORNER BRACE

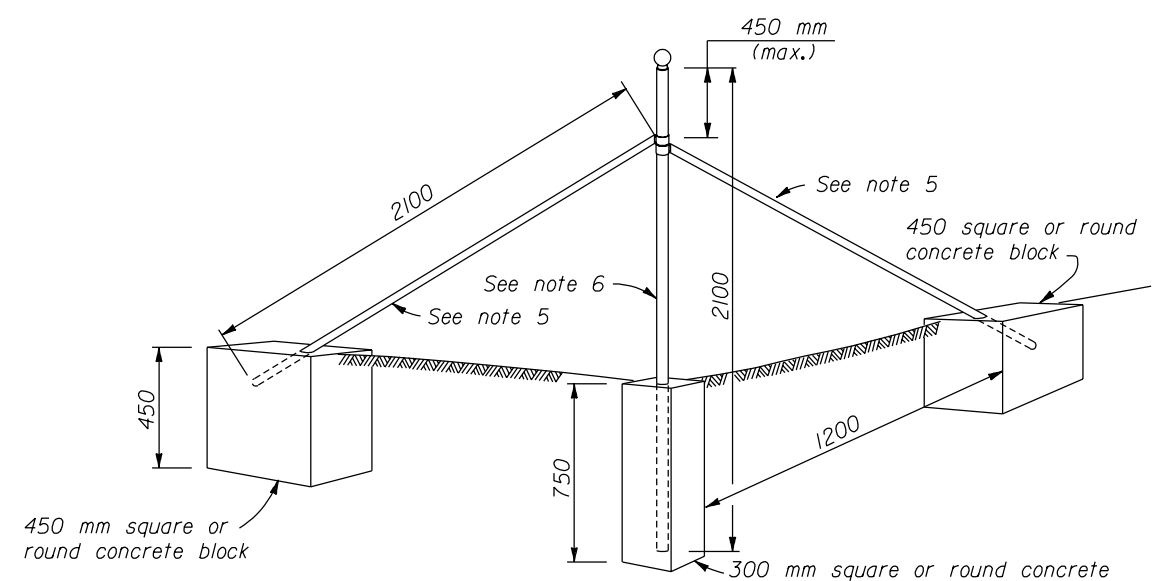


(not necessary to form)

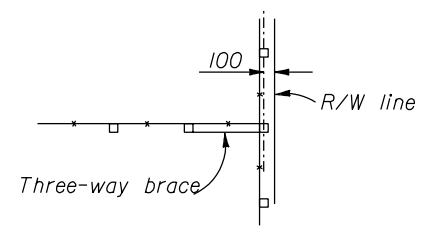
ALTERNATE CONCRETE BLOCK



METAL LINE BRACE



METAL CORNER BRACE



FENCE TERMINAL

NOTE:

- Dimensions not labeled are in millimeters.
- Furnish either painted or galvanized angles or galvanized steel round pipe posts for corner or line braces. Furnish round pipe posts with snug-fitting galvanized metal caps. Fabricate steel pipe fence posts and braces according to ASTM F 1083.
- Furnish pressure treated Douglas fir, Western larch, Cedar, or Pine of any species for corner, pull, end or gate posts and braces. Provide posts with a minimum circumference of 444.5 mm and a minimum distance between opposite faces of 100 mm. Provide nominal 100 x 100 mm braces. Connect braces to post with three 16d nails or a 9.53 by 100 mm steel dowel. Treat the posts and braces with pentachlorophenol, ACZA, or CCA, Type I, A, B or C.
- Where a fence ties into a bridge parapet or railing, the top of the fence shall not project above the top of the parapet or railing.
- 51 x 51 x 6.4 mm angle or 31.75 mm standard steel pipe brace.
- 64 x 64 x 6.4 mm angle or 64 mm standard steel pipe post.

NO SCALE

U.S. DEPARTMENT OF TRANSPORTATION FEDERAL HIGHWAY ADMINISTRATION WESTERN FEDERAL LANDS HIGHWAY DIVISION	
METRIC DETAIL	
IDAHO FENCING BRACES	
DETAIL APPROVED FOR USE 3/1996	DETAIL
REVISED:	WM619-52

13 DEC 2000 f:\standrow\metric\details\wm61952.dgn