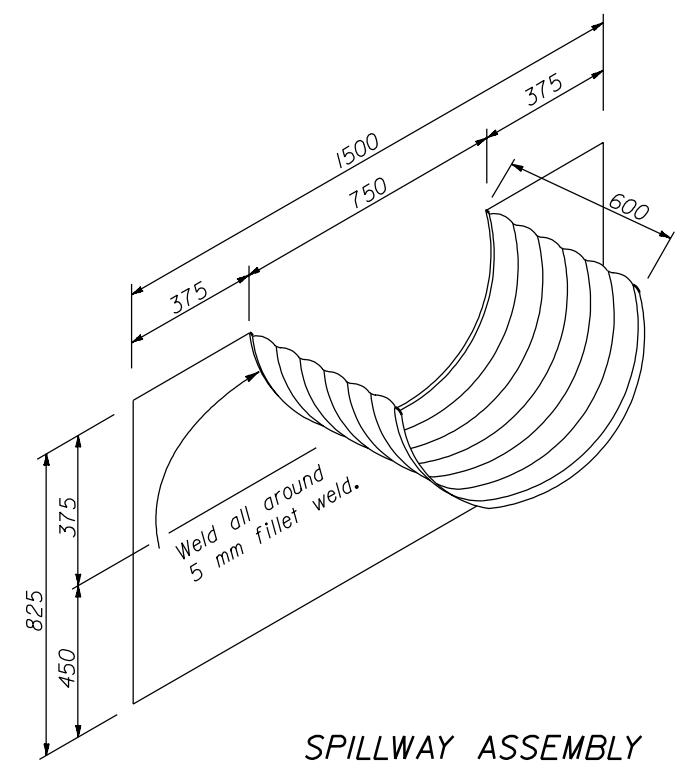


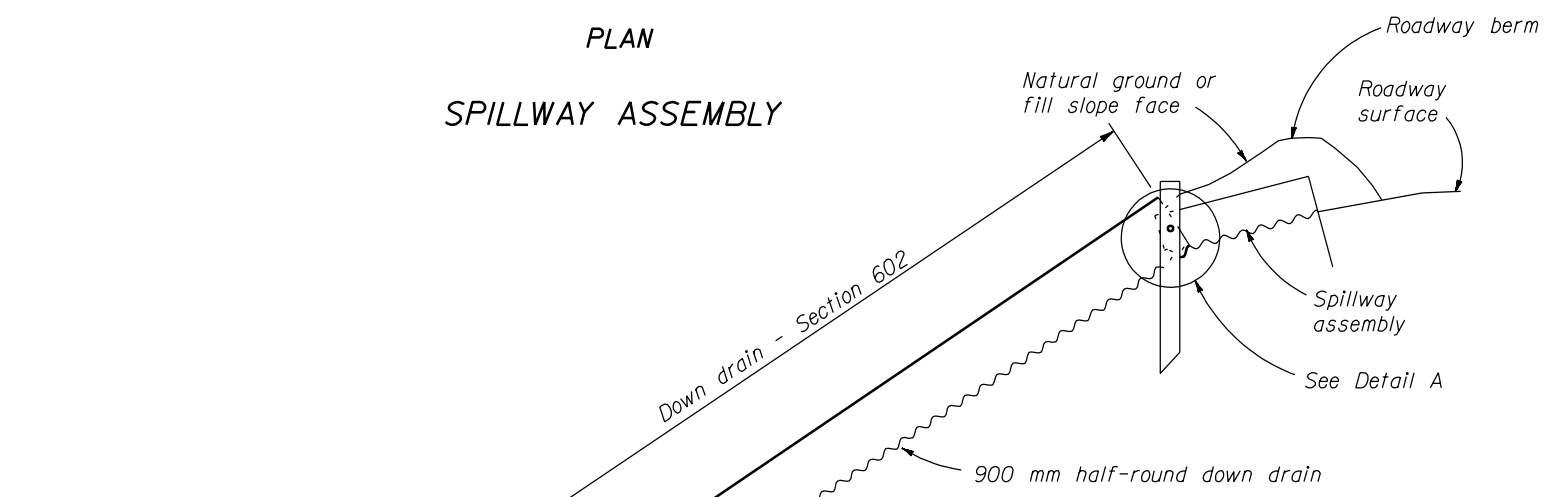
Dimensions shown are subject to field adjustment to fit existing conditions

PLAN
SPILLWAY ASSEMBLY

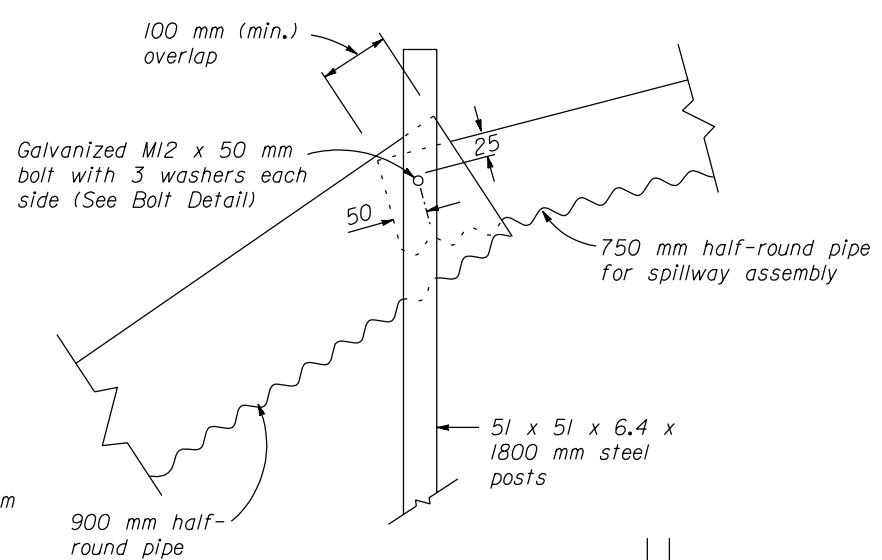
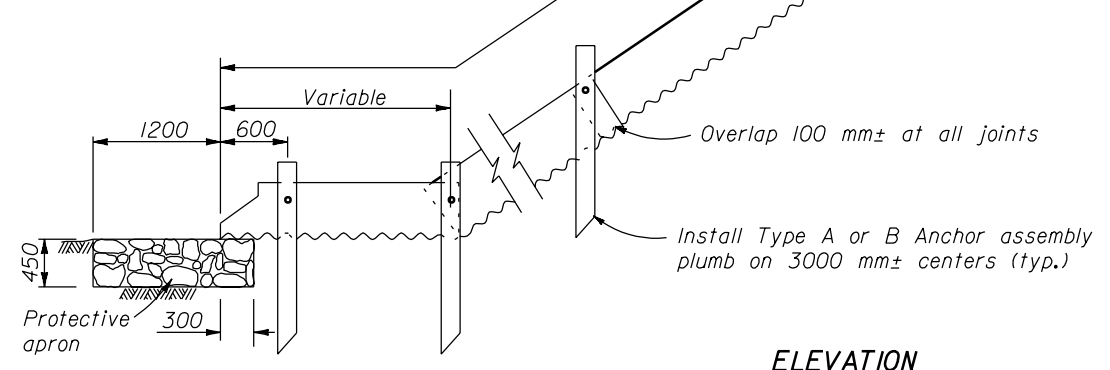


SPILLWAY ASSEMBLY

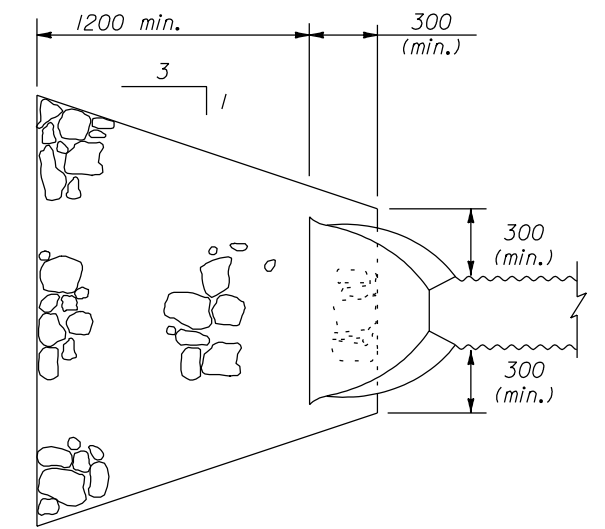
- NOTE:**
1. Dimensions not labeled are in millimeters.
 2. Fabricate spillway assembly from 1.6 mm thick galvanized steel or 1.5 mm aluminum.
 3. Place Class 2 riprap conforming to Section 251 for protective apron.
 4. Construct down drain from annular corrugated pipe, or from helically corrugated pipe with factory annular or flanged reformed ends.
 5. Furnish hardware in the metric sizes shown. Equivalent imperial sizes may be used when metric sizes are not available.
 6. Approved alternate designs may be used.



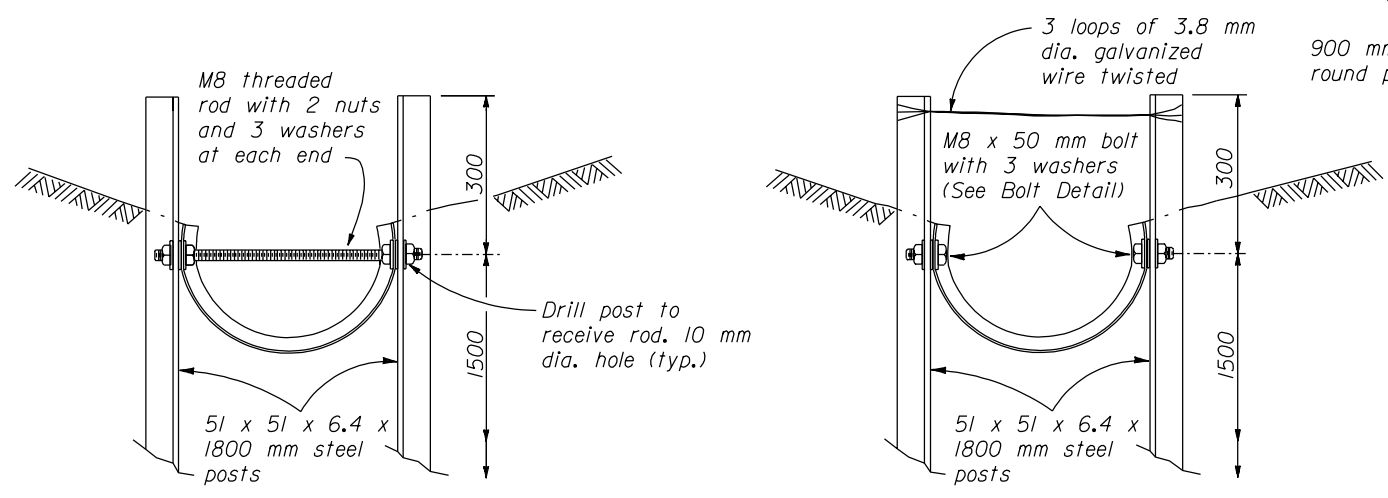
ELEVATION
SPILLWAY ASSEMBLY AND DOWN DRAIN



DETAIL A



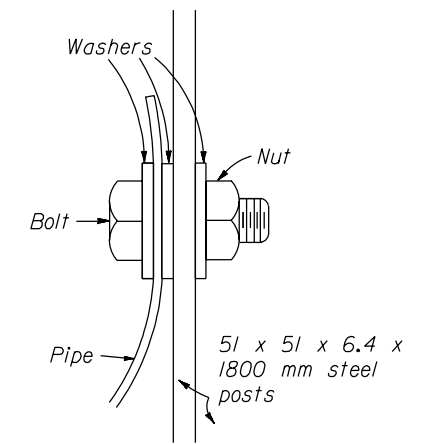
PLAN
PROTECTIVE APRON



TYPE A

ANCHOR ASSEMBLY

TYPE B



BOLT DETAIL

U.S. DEPARTMENT OF TRANSPORTATION
FEDERAL HIGHWAY ADMINISTRATION
WESTERN FEDERAL LANDS HIGHWAY DIVISION

METRIC DETAIL

SPILLWAY ASSEMBLY WITH HALF-ROUND DOWN DRAIN

DETAIL APPROVED FOR USE 3/1996
REVISED: 3/1999 3/2000

DETAIL
WM606-52

NO SCALE