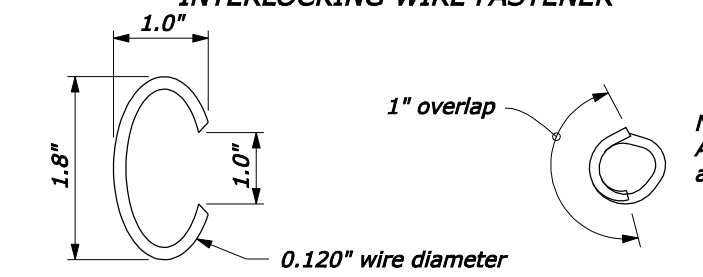


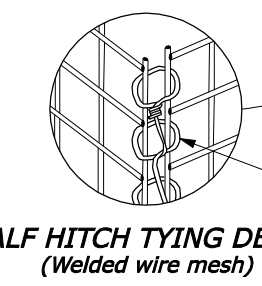
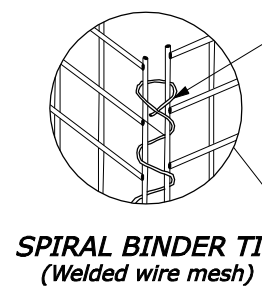
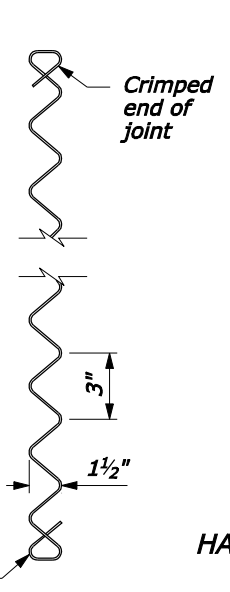
**INTERLOCKING WIRE FASTENER**



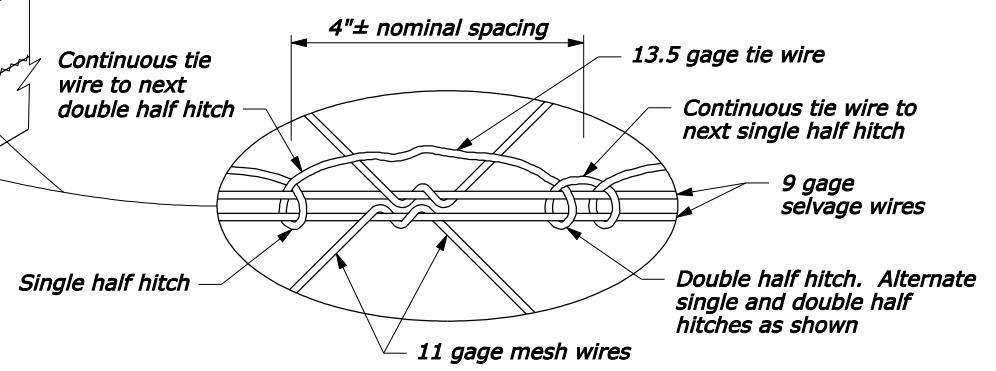
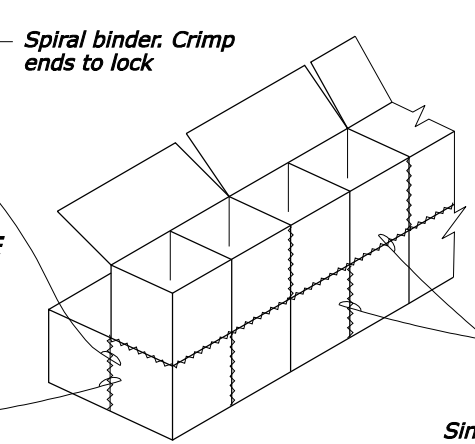
**OVERLAPPING RING WIRE FASTENER**  
(Not allowed for basket to basket connection)  
**ALTERNATE TYING FASTENERS**

NOTE:  
All dimensions  
are nominal

NOTE:  
All dimensions  
are nominal



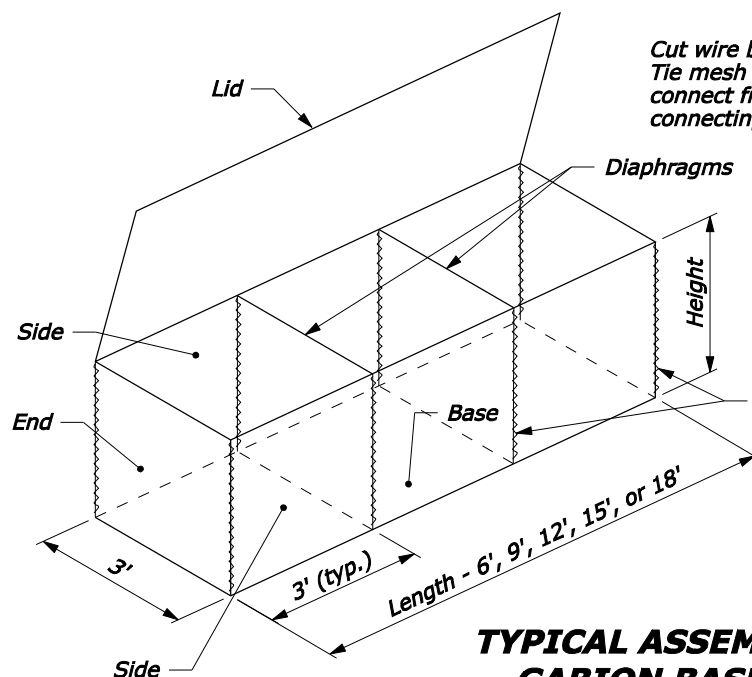
**HALF HITCH TYING DETAIL**  
(Welded wire mesh)



**HALF HITCH TYING DETAIL**  
(Twisted wire mesh)

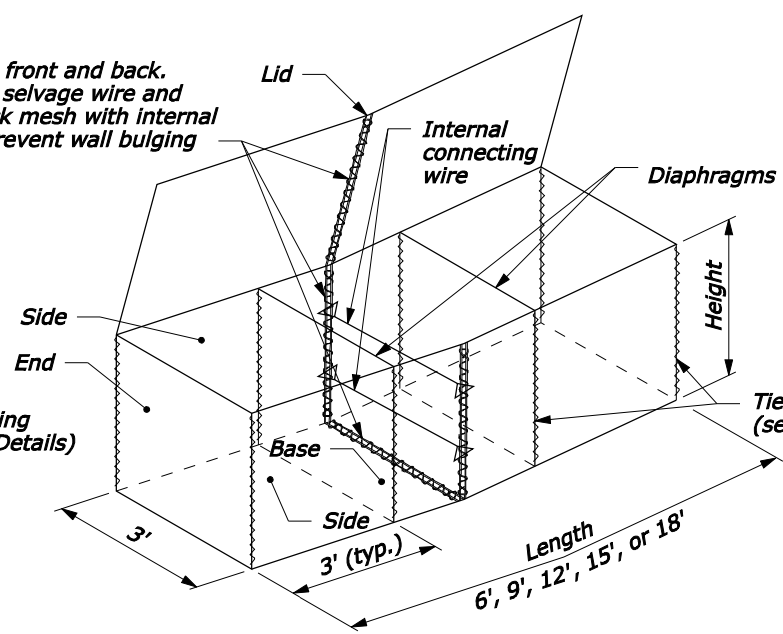
**TYPICAL INSTALLATION GABION BASKETS**

**9 GAGE SPIRAL BINDER**

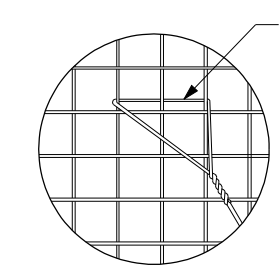


**TYPICAL ASSEMBLED GABION BASKET**

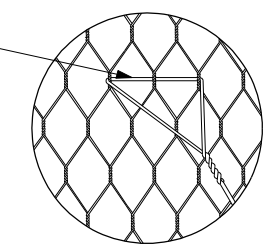
Cut wire basket mesh front and back. Tie mesh with 9 gage selvage wire and connect front and back mesh with internal connecting wires to prevent wall bulging.



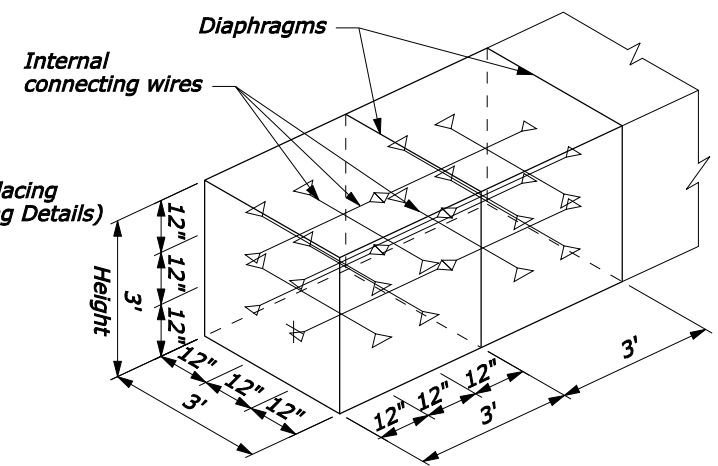
**ASSEMBLED GABION BASKET IN WALL GRADE TRANSITION AREAS**



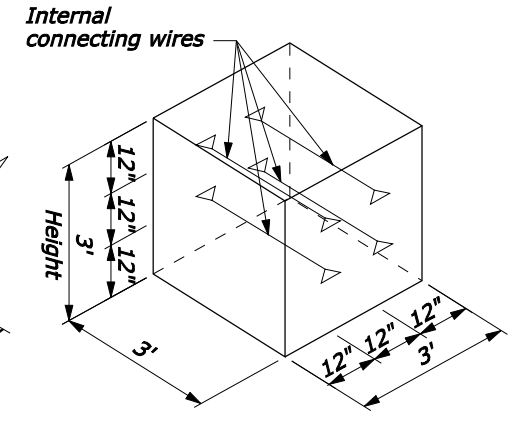
**WELDED WIRE MESH**



**TWISTED WIRE MESH**

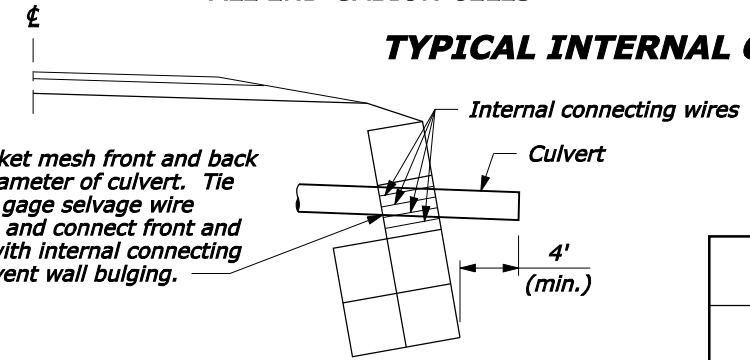


**ALL END GABION CELLS**



**ALL INTERIOR GABION CELLS**

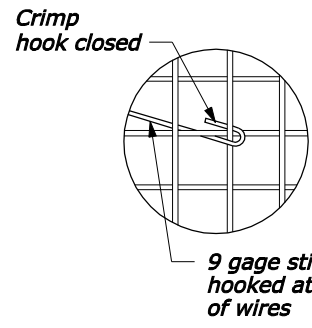
**TYPICAL INTERNAL CONNECTING WIRES**



**TYPICAL CULVERT INSTALLATION THROUGH GABION WALL**

NO SCALE

<b>GABION BASKET NOMINAL SIZES AND CAPACITY</b>				
Size Code Letter	Size in feet		Diaphragm Partitions	Capacity (CUYD)
	Length	Height		
A	6	3.0	1	2.00
B	9	3.0	2	3.00
C	12	3.0	3	4.00
X	15	3.0	4	5.00
Y	18	3.0	5	6.00
D	6	1.5	1	1.00
E	9	1.5	2	1.50
F	12	1.5	3	2.00
G	6	1.0	1	0.67
H	9	1.0	2	1.00
I	12	1.0	3	1.33



**ALL GABION CELLS**  
**OPTIONAL INTERNAL CONNECTING WIRES**  
**WELDED WIRE GABION BASKET**

07-Feb-2008 03:47 PM Pp://198.145.186.2/std.pln/vf/w25301.dgn [US Customary]