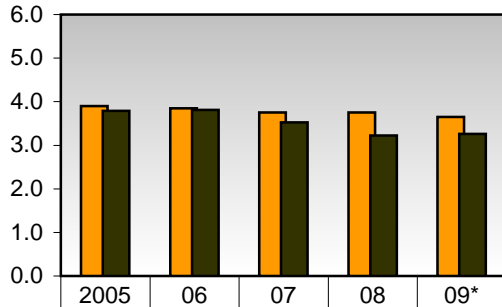


FRA Safety Performance Measures - All Railroads

Fiscal-Year Basis

Grade Crossing Incidents

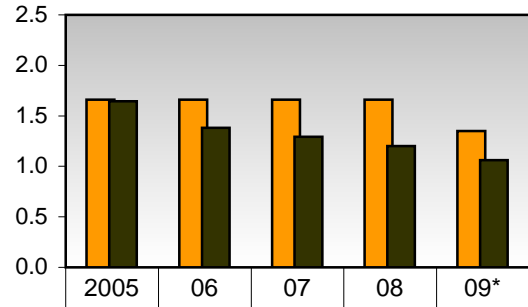
Per Million Train-Miles



	2005	06	07	08	09*
GPRC Goal	3.90	3.85	3.75	3.75	3.65
Actual	3.79	3.81	3.52	3.22	3.26

Human-Factors Train Accidents

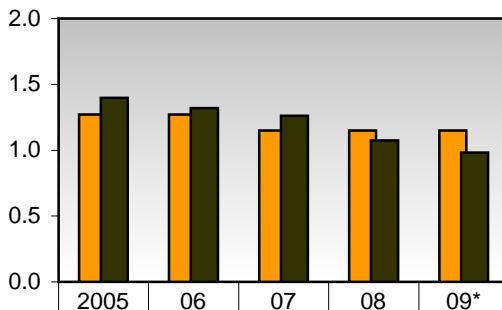
Per Million Train-Miles



	2005	06	07	08	09*
GPRC Goal	1.66	1.66	1.66	1.66	1.35
Actual	1.65	1.38	1.29	1.20	1.06

Track-Caused Train Accidents

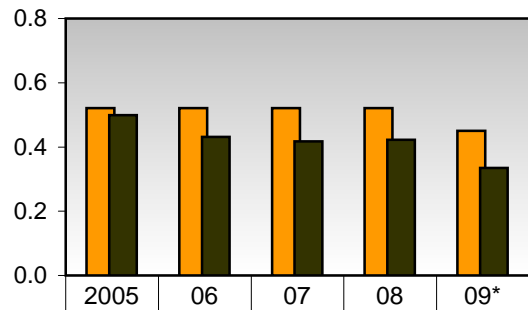
Per Million Train-Miles



	2005	06	07	08	09*
GPRC Goal	1.27	1.27	1.15	1.15	1.15
Actual	1.40	1.32	1.26	1.07	0.98

Equipment-Caused Train Accidents

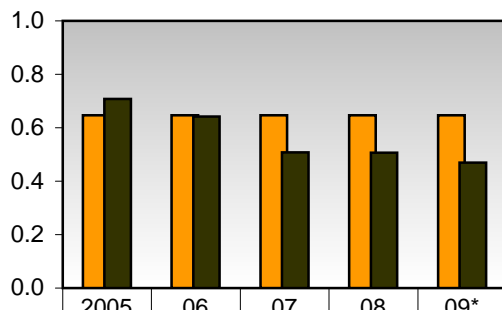
Per Million Train-Miles



	2005	06	07	08	09*
GPRC Goal	0.521	0.521	0.521	0.521	0.450
Actual	0.499	0.431	0.417	0.422	0.334

Signal/Misc. Train Accidents

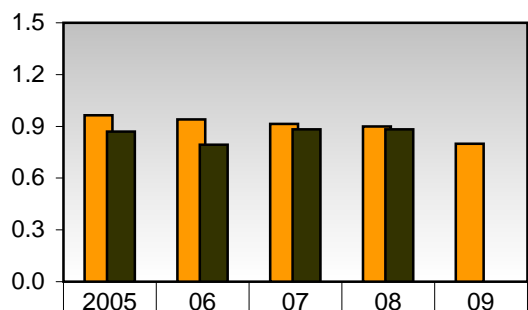
Per Million Train-Miles



	2005	06	07	08	09*
GPRC Goal	0.647	0.647	0.647	0.647	0.647
Actual	0.707	0.642	0.508	0.507	0.469

Non-Accident Hazmat Releases

Per Million Train-Miles



	2005	06	07	08	09
GPRC Goal	0.965	0.940	0.915	0.900	0.800
Actual	0.870	0.794	0.882	0.883	

* FY 2009 = 5 months preliminary data.