

Off-Site configuration documentation for Federal Lands Highway Division

workspaces

Prepared by Phillip Hess – phillip.hess@fhwa.dot.gov.
Last Updated: January 6, 2006

With the **V8_Resource.zip** file extracted, copy the folder **V8_Resource** and all its contents **and subfolders** to a location that you select on a server drive. The server drive will need to be accessible to all the workstations running MicroStation V8 2004 Edition.

Configuring FLH.cfg

In the folder **V8_Resource** is the file **FLH.cfg**. In a text editor such as Notepad, or UltraEdit open this file and look for the line that looks like this:

BENTLEYROOT = c:/bentley/MSV8/

```
1 #####
2 #                               Created by Phillip Hess on June 12, 2000          #
3 #                               Last Modified on January 6, 2006 by Phillip Hess   #
4 #                               This file is used by Federal Lands Highway Division #
5 #                               variables with in Microstation V8.5.XX.XX          #
6 #####
7
8 #-----FLH Declared Variables-----#
9 BENTLEYROOT = c:/Bentley/MSV8/
10 PROJ_DATA = C:/Myfiles/
11 _USTN_PROJECT = C:/V8_Resource/Project_Configurations/
12
13 #-----Set variables for other MicroStation features-----#
14 _USTN_LICENSING : S{BENTLEYROOT}Program/Licensing/
15 _USTN_DISPLAYALLCFGVARS = 0
16 MS_UNITS_SHOWALL = 1
17 MS_OPENV7 = 3
18 MS_V7AUTOSAVE_NODIALOG = 1
19 MS_OTWREG_NOCHECK = 1
```

This is the variable that points to the installed location of Microstation V8 on the workstation. You will need to change the path to match your workstation configuration.

EXAMPLE:

If your workstation has Microstation V8 installed to C:\Program Files\Bentley, then you would change the variable to read

BENTLEYROOT = "c:/Program Files/Bentley/"

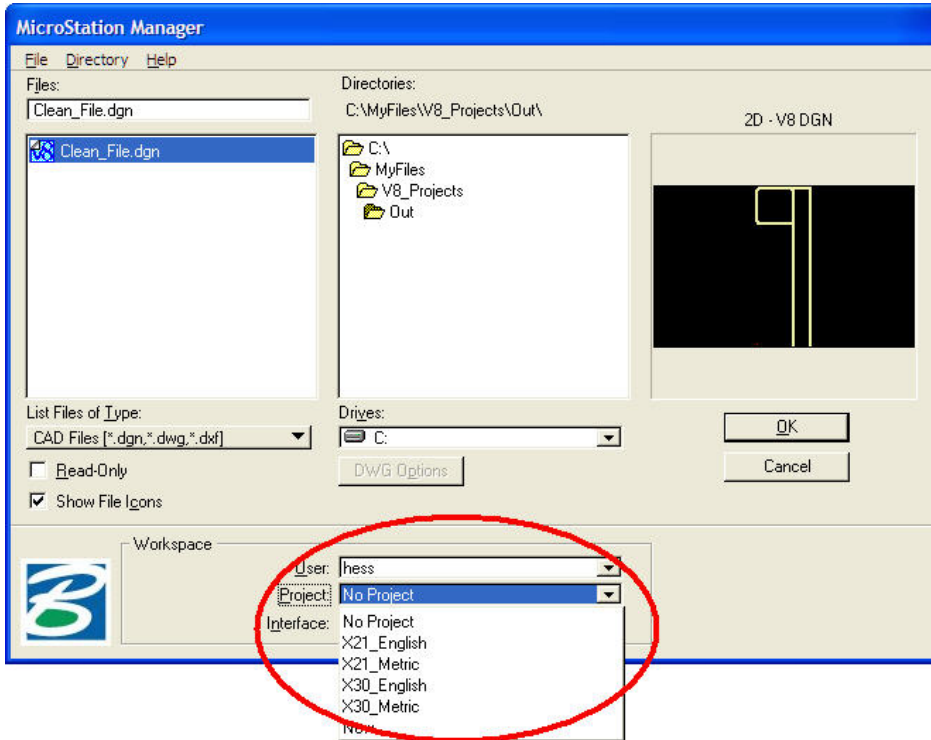
NOTE: The "/" rather than "\" It must be a forward slash "/" in the path name.
If any of the paths you are modifying have a space in them, the path needs to be encapsulated in quotes - **BENTLEYROOT = "c:/Program Files/Bentley/"**

The next variable is **PROJ_DATA**, this points to the folder where the designer's projects are stored. Change this to match your design project location.

PROJ_DATA = C:/Myfiles/

```
1 #####
2 #                               Created by Phillip Hess on June 12, 2000                               #
3 #                               Last Modified on January 6, 2006 by Phillip Hess                          #
4 #                               This file is used by Federal Lands Highway Division to configure system    #
5 #                               variables with in Microstation V8.5.XX.XX                               #
6 #####
7
8 #-----FLH Declared Variables-----
9 BENTLEYROOT                      = c:/Bentley/MSV8/
10 PROJ_DATA                        = C:/Myfiles/
11 _USTN_PROJECT                    = C:/V8_Resource/Project_Configurations/
12
13 #-----Set variables for other MicroStation features-----
14 _USTN_LICENSEING                 : ${BENTLEYROOT}Program/Licensing/
15 _USTN_DISPLAYALLCFGVARS          : 0
16 MS_UNITS_SHOWALL                 = 1
17 MS_OPENV7                        = 3
18 MS_V7AUTOSAVE_NODIALOG          = 1
19 MS_OTWREG_NOCHECK                = 1
```

The next variable is **_USTN_PROJECT**. This points to the Project Configuration Files, or .pcf files. These files are important in that they setup the criteria for *X_21 and X_30 Metric and English jobs. It is necessary to select the appropriate .pcf files from MicroStation Manager before opening the design file.



* X_21 Criteria is only used in Western Federal Lands Highway Division

You will need to change the path to match the location you extracted the **V8_Resource** folder to.

```
1 #####
2 #                               Created by Phillip Hess on June 12, 2000      #
3 #                               Last Modified on January 6, 2006 by Phillip Hess #
4 #                               This file is used by Federal Lands Highway Division to configure system #
5 #                               variables with in Microstation V8.5.XX.XX      #
6 #####
7
8 #-----FLH Declared Variables-----#
9 BENTLEYROOT                     = c:/Bentley/MSV8/
10 PROJ_DATA                       = C:/Myfiles/
11 _USTN_PROJECT                 = C:/V8_Resource/Project_Configurations/
12
13 #-----Set variables for other MicroStation features-----#
14 _USTN_LICENSING                : ${BENTLEYROOT}Program/Licensing/
15 _USTN_DISPLAYALLCFGVARS       : 0
16 MS_UNITS_SHOWALL              = 1
17 MS_OPENV7                     = 3
18 MS_V7AUTOSAVE_NODIALOG        = 1
19 MS_OTWREG_NOCHECK             = 1
```

The remaining variables do the following and do not need to be modified:

- _USTN_LICENSING** – Designates the location of the Microstation license file
- _USTN_DISPLAYALLCFGVARS** – Enables the **_USTN_** variables from being listed or not.
- MS_UNITS_SHOWALL** – Gives all available working units
- MS_OPENV7** – Determines how V8 will open J files
- MS_V7AUTOSAVE_NODIALOG** – Automatically enables the V7 Auto Save
- MS_OTWREG_NOCHECK** – Disables the Bentley Registration dialog box

The **FLH.cfg** can reside on the server or can be copied to each system. After you have made the modifications to **FLH.cfg** copy it to a location of your preference. Recommendation would be to leave it under the **V8_Resource** folder.

Configuring FLH_mslocal.cfg

In a text editor such as Notepad or UltraEdit open the file "**FLH_mslocal.cfg**". It's located in the folder **V8_Resource**. You need to modify the following line:

MSDIR = C:/Bentley/MSV8/Program/Microstation/

The variable **MSDIR** is a Bentley variable that must point to the folder "**MicroStation**" in the path that MicroStation was installed to. You will need to change this path to match the path for MicroStation on your computer(s).

```
1 #####
2 #                               Created by Phillip Hess on June 12, 2000 #
3 #                               Last Modified on January 6, 2006 by Phillip Hess #
4 #                               This file is used by Federal Lands Highway Division to configure system #
5 #                               variables with in Microstation V8.5.XX.XX #
6 #####
7 MSDIR = C:/Bentley/MSV8/Program/Microstation/
8 FLH_CONFIG = F:/V8_Resource/
9 _USTN_SYSTEM      : $(MSDIR)config/system/
10
11 %if exists $(FLH_CONFIG)flh.cfg
12     %include $(FLH_CONFIG)flh.cfg
13 %endif
14
15 %include $(MSDIR)config\msconfig.cfg
```

The next variable is **FLH_CONFIG**. This variable is used to point to the location of the **flh.cfg** file you extracted from the .zip file. Modify the path to point to your location of the **flh.cfg** file. It's default location is in the **V8_Resource** folder, but you can copy it anywhere. Again I'd recommend leaving it under **V8_Resource**. Just make sure this variable points to it.

FLH_CONFIG = F:/V8_Resource/

Example: If you extracted the **V8_Resource** folder and copied it the network drive W:\, you'd change the line to read:**FLH_CONFIG = W:/V8_Resource/**

```

1 #####
2 #                               Created by Phillip Hess on June 12, 2000 #
3 #                               Last Modified on January 6, 2006 by Phillip Hess #
4 #                               This file is used by Federal Lands Highway Division to configure system #
5 #                               variables with in Microstation V8.5.XX.XX #
6 #####
7 MSDIR = C:/Bentley/MSV8/Program/Microstation/
8 FLH_CONFIG = F:/V8_Resource/
9 _USTN_SYSTEM      : $(MSDIR)config/system/
10
11 %if exists $(FLH_CONFIG)flh.cfg
12     %include $(FLH_CONFIG)flh.cfg
13 %endif
14
15 %include $(MSDIR)config\msconfig.cfg

```

After you've finished the edits to the **FLH_mslocal.cfg** file you need to copy it to the **Config** folder in Microstation. The default location of this folder is:

"C:\Program Files\Bentley\Program\Config\"

FLH Microstation Desktop Shortcut

In the **V8_Resource** folder is a desktop shortcut icon named "**FLH Microstation**".



Copy this to your desktop. Right click on the icon and select "**Properties**" and go the target line. Currently the line looks like:

```

C:\Bentley\MSV8\Program\MicroStation\ustation.exe
-wcC:\Bentley\MSV8\Program\MicroStation\config\FLH_mslocal.cfg

```

Modify the path to point to the location of your **ustation.exe** file and the location of the Microstation **Config** folder where you copied **FLH_mslocal.cfg**.

If you installed Microstation to **C:\Program Files\Bentley** you'd modify the line to look like:

```

"C:\Program Files\Bentley\Program\MicroStation\ustation.exe"
-wc"C:\Program Files\Bentley\Program\MicroStation\config\FLH_mslocal.cfg"

```

NOTE: Remember to encapsulate a path in "" if there are spaces in it.

Project Configuration Files:

Underneath the folder **V8_Resource** is a folder "**Project_Configurations**". In this folder are project level configuration files for the follow criteria. These files load specific settings for both Geopak and MicroStation. Open each of the four files and change the following variables to point the location you copied the **V8_Resource** folder to.

- *English Projects using the old Geopak criteria X_21
- *Metric Projects using the old Geopak criteria X_21
- English Projects using the Geopak criteria X_30
- Metric Projects using the Geopak criteria X_30

X30_Variable = F:/V8_Resource/X_30/
Or
***X21_Variable** = F:/V8_Resource/X_21/

Change this variable **GPK_ENGMET_TXTFILE** to point the location of the **engmet.txt** file in ...**Geopak\bin**. This is a Geopak file that gets installed with Geopak and is not in the downloaded zip file.

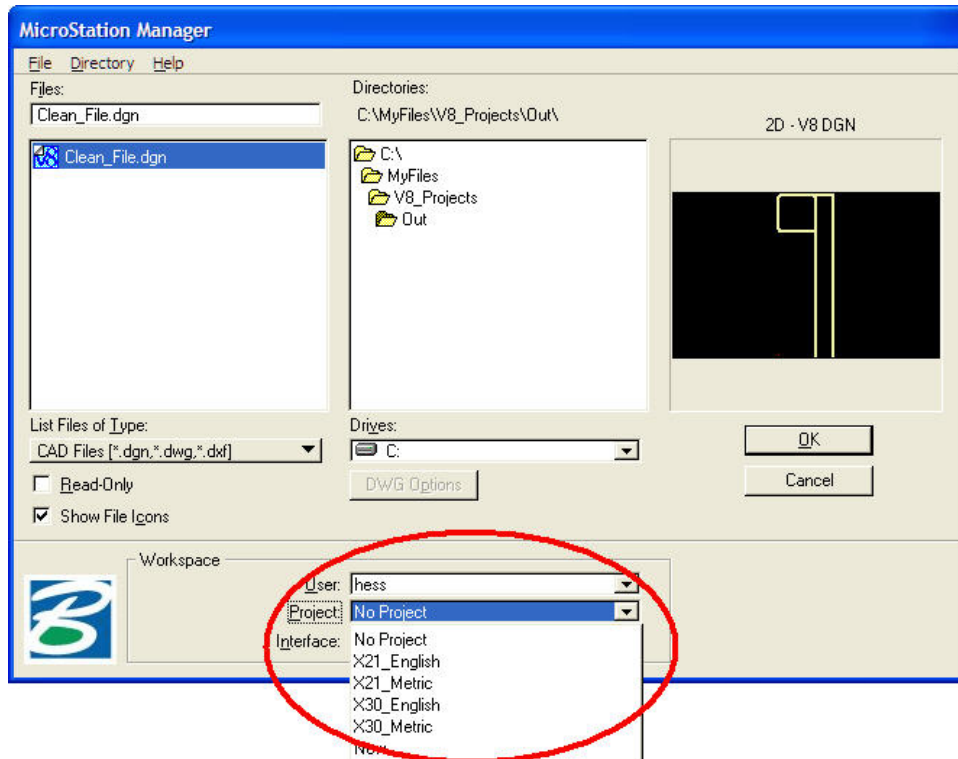
GPK_ENGMET_TXTFILE < C:/Bentley/MSV8/geopak/bin/engmet.txt

Next you'll need to modify the path of the text editor you want to use with Geopak. You can use most general text editors. Do not use Write or Word as the text editor. Notepad will work fine. As you can see from the paths below we use UltraEdit.

GPK_EDITOR < C:/program files/ultraedit/uedit32.exe
GPK_SUPER_EDITOR < C:/program files/ultraedit/uedit32.exe

* X_21 Criteria is only used in Western Federal Lands Highway Division

Once you have these edited you can start MicroStation. From **MicroStation Manger**, near the bottom you'll see text field labeled "**Projects:**", select the drop down list arrow and you'll see the four-project configuration files you just edited. Select the one you want for your project, and then select the project you want to work on and you should be set.



As of January 5, 2006 the certified versions for **Microstation V8 2004 Edition** and **Geopak Road 2004 Edition** are:

Geopak 08.05.02.59

Microstation 08.05.02.35.