



EPA Fact Sheet

**State Road 114 Ground Water Plume Superfund Site
Hockley County, Texas**

January 2008

EPA Announces Proposed Plan

The U.S. Environmental Protection Agency (EPA) has released the Proposed Plan for addressing ground water and soil contamination, and the risks associated with the release of hazardous substances at the State Road 114 Ground Water Plume Superfund Site (Site) in Hockley County, Texas. The EPA Region 6 office is the lead agency for this Site. The Texas Commission on Environmental Quality is the support agency and conducted the Remedial Investigation at the Site as well as provided technical support and review of the Feasibility Study through a cooperative agreement with EPA.

The EPA has conducted its activities in connection with the Site in accordance with the Comprehensive Environmental Response, Compensation, and Liability Act (CERCLA or Superfund), 42 U.S.C. § 9601 *et seq.*, and the National Oil and Hazardous Substance Contingency Plan, 40 C.F.R. Part 300. The EPA issued the Proposed Plan in accordance with and as part of its public participation responsibilities under CERCLA §117(a), 42 U.S.C. § 9617(a) and 40 CFR §300.430(f)(2).

Community Participation

This Proposed Plan fact sheet highlights information contained in the Administrative Record for the Site which includes the Remedial Investigation Report, Feasibility Study Report, the Human Health Risk Assessment Report, and other documents and reports used in preparing this Proposed Plan. The Administrative Record file is available at the information repository locations listed at the end of this fact sheet. The EPA encourages the public to review those documents to obtain more information about the Superfund activities that have been conducted at the Site.

Public comments on this Proposed Plan and the Administrative Record can be submitted during the public comment period from January 11, 2008, through February 11, 2008. All written comments should be

addressed to: Vincent Malott, Remedial Project Manager, U.S. EPA Region 6 (6SF-RA), 1445 Ross Avenue, Dallas, Texas 75202-2733.

A public meeting will also be held to receive comments on Thursday, January 24, 2008, at 7:00 pm at the Levelland City Hall, 1709 Avenue H, Levelland, Texas.

Site Background

The Motor Fuels Corporation refinery (also known as Consumers Cooperative Refinery Association) was a former petroleum products refinery located approximately 1 mile west of the City of Levelland in Hockley County, Texas. The former refinery site is now occupied by the Farmer's Cooperative Elevator Association along with a number of oil related service companies along State Highway 114. Wastes from the refinery processes were likely co-mingled with crude oil and petroleum product spills within the refinery resulting in ground water contamination of the Ogallala aquifer along with some residual soil contamination. The ground water contaminant plume is approximately 1.2 miles long and contains primarily 1,2-dichloroethane and benzene along with mobilized arsenic and manganese. The contaminant plume is migrating from west to east and has contaminated private water supply wells and potentially threatens one of the City of Levelland's well fields. See Figure 3 from the Proposed Plan on page 3 of this fact sheet.

Summary of Preferred Alternatives

Differing technologies were combined into a range of remedial alternatives to address the ground water and soil cleanup objectives for the Site. The ground water objectives include preventing human exposure, reducing contaminant sources, preventing further migration of the contaminant plume, and returning the Ogallala aquifer to its beneficial uses. The cleanup objective for soils is to reduce or prevent ecological exposure to contaminants above acceptable levels. The Preferred

Alternatives can change in response to public comment or new information. The following is a summary of the EPA's Preferred Alternatives for the Site:

- Installation of a water supply line from the City of Levelland to a proposed service area along FM 1490, north of State Highway 114, and adjacent to Levelland. This alternative includes installation of individual connections to homes and businesses with private water supply wells currently or potentially impacted by the ground water contamination. The monthly costs for water usage will be the responsibility of the resident or business at a rate set by the City of Levelland. Commercial properties along State Highway 114 near the former Motor Fuels Refinery property are not currently within the proposed water service area due to the distance from the City of Levelland. Filtration systems may be maintained on those wells near the former refinery pending development of an alternative water supply for non-potable use.
- Installation of a ground water extraction system that combines hydraulic containment of the plume front with more aggressive manipulation of ground water flow via higher pumping rates to reduce contaminant concentrations. The initial system design estimate includes 21 extraction wells, a ground water treatment plant, and injection wells to return the treated water to the Ogallala aquifer. In addition, a soil vapor extraction system would be installed at the former refinery site to reduce the remaining source area through an estimated 135 extraction wells.
- Excavation and on-site burial of an estimated 3,600 cubic yards of contaminated soils and spent catalyst material exceeding ecological criteria at the former refinery site.

For specific information about the State Road 114 Ground Water Plume Site or the Superfund process, please contact:

Vincent Malott
EPA Remedial Project Manager
(214) 665-8313 or 1-800-533-3508 (toll-free)
malott.vincent@epa.gov

Inquiries from the news media can be directed to Dave Bary, U.S. EPA Region 6 Press Office, at (214) 665-2208.

For specific information about the filtration systems installed on the private water supply wells or the State's participation in the Superfund process, please contact:

Diane Poteet
Texas Commission on Environmental Quality
Remediation Division (MC-143)
P.O. Box 13087
Austin, Texas 78711-3087
(512) 239-2502
dpoteet@tceq.state.tx.us

Information Repositories are available at:

Hockley County Memorial Library
811 Austin Street
Levelland, Texas 79336-4500
(806) 894-6750
Mon., Tue., Wed., and Fri. – 9:00 am to 5:00 pm
Thur. – 9:00 am to 7:00 pm

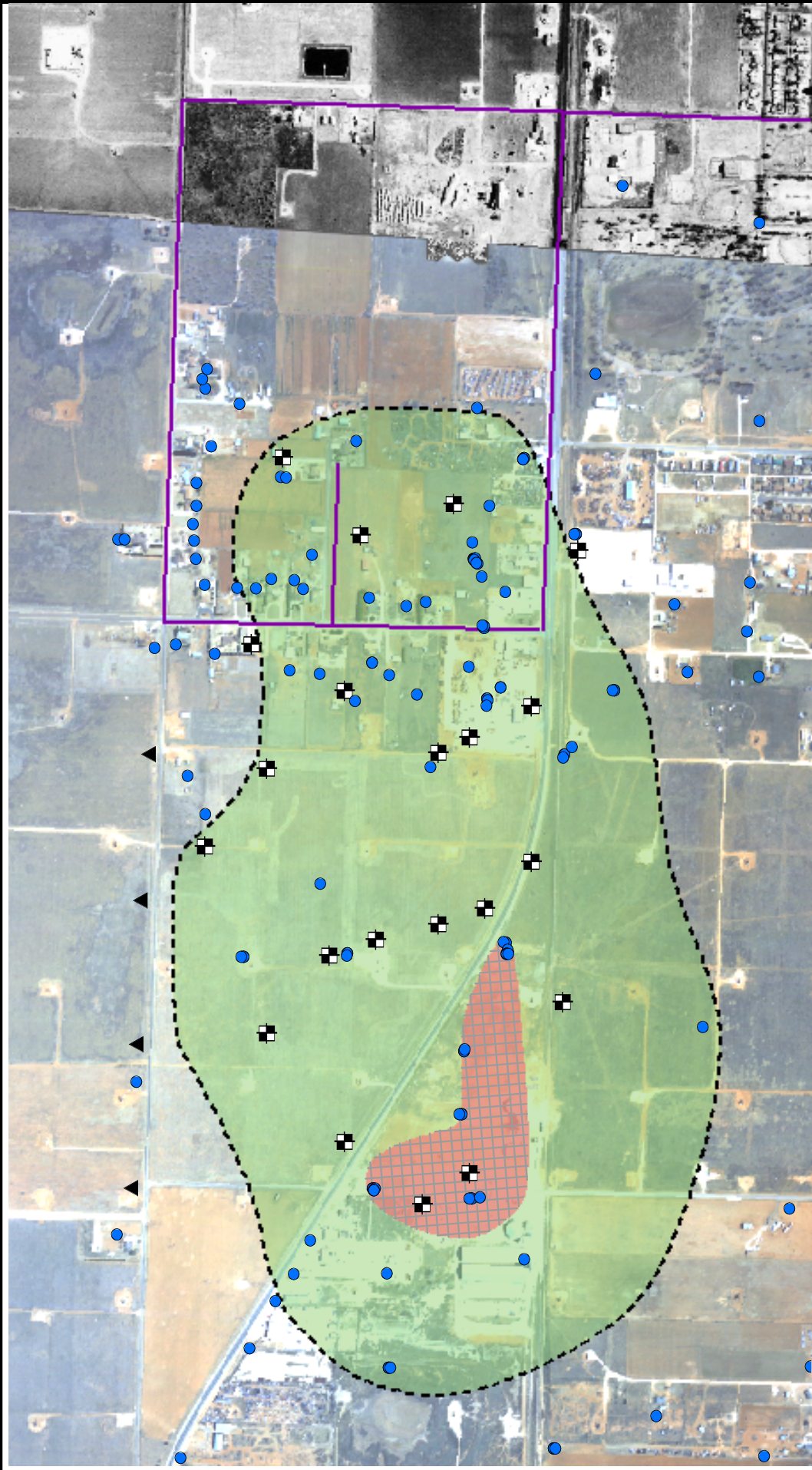
Texas Commission on Environmental Quality
Building E, Records Management, First Floor
12100 Park 35 Circle
Austin, Texas 78753
(512) 239-2920
Mon. - Fri. - 8:00 am to 5:00 pm

On the Web

On the internet, information about U.S. EPA Region 6 and the Superfund Program can be found at:
<http://www.epa.gov/region6/superfund>

Call U.S. EPA at 1-800-533-3508 to receive a Spanish translation of this fact sheet.

Para recibir una traducción en español de esta Hoja de Datos, comunicarse con la Agencia de Protección del Medio Ambiente de los EEUU (la EPA) al número de teléfono 1-800-533-3508.



Explanation

- Existing monitor and private well
- ▲ Proposed injection well
- Proposed extraction well
- Estimated area extent of benzene and 1,2 DCA above MCL in the undivided aquifer
- Approximate extent of light non-aqueous phase liquid
- 70' grid overlay of SVE wells
- Proposed water supply line



STATE ROAD 114 GROUND WATER PLUME SUPERFUND SITE
Preferred Alternative

Figure 3

EPA Region 6 Will Hold a Public Meeting on the Proposed Cleanup of the State Road 114 Ground Water Plume Site

The EPA will hold a public meeting to inform residents of the proposed cleanup strategy and obtain comments on the Proposed Plan for the State Road 114 Ground Water Plume Site in Hockley County, Texas.

The public meeting will be held on Thursday, January 24, 2008, at 7:00 p.m. at the Levelland City Hall, 1709 Avenue H, Levelland, Texas. The public meeting is being held in a fully accessible facility. Should you have specific needs or questions about the facility, please contact

Vincent Malott, Remedial Project Manager, at (214) 665-8313 or toll-free (800) 533-3508.

Public comments can be presented at the public meeting or can be submitted during the public comment period from January 11, 2008, through February 11, 2008. All written comments should be addressed to:

**Vincent Malott, Remedial Project Manager
U.S. EPA Region 6 (6SF-RA)
1445 Ross Avenue
Dallas, Texas 75202-2733**



Region 6
1445 Ross Ave. (6SF-TS)
Dallas, TX 75202