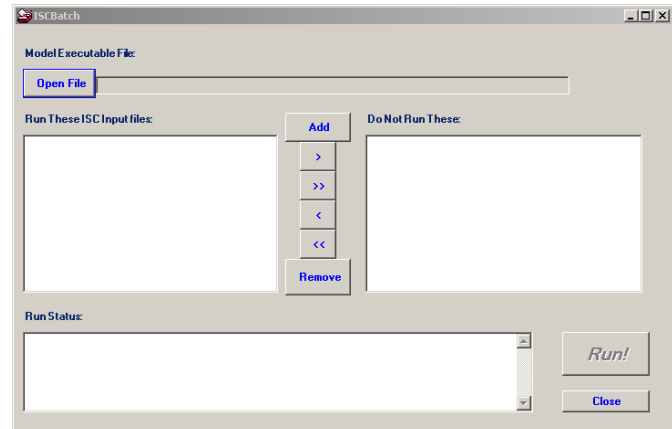

RAIMI Tools Fact Sheet: ISCBatch

Executing multiple air modeling runs

U.S. Environmental Protection Agency (U.S. EPA) Region 6 developed ISCBatch under the Regional Air Impact Modeling Initiative (RAIMI) to meet the functional need of executing multiple ISCST3 air modeling runs in a single batch run.



ISCBatch Key Features

- ISCBatch eliminates the need for manually loading the ISC input files (RAIMI assessments often require modeling of thousands of sources)
- ISCBatch documents the run status and the run completion time for each modeling run
- ISCBatch features two windows that allow the modeler to view specific input files and select those to be modeled

Additional Information

For additional information on ISCBatch or the RAIMI Program, contact Steve Thompson, EPA Region 6, at thompson.steve@epa.gov or via phone at 214-665-2769.

