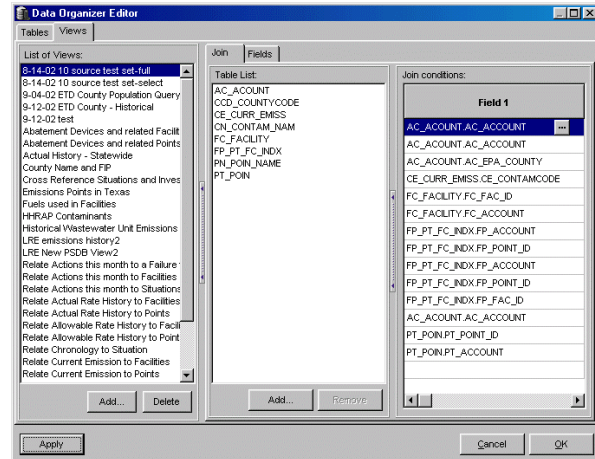


RAIMI Tools Fact Sheet: Data Miner

Modeling and cumulative-type risk assessment projects require inspection and analysis of large databases. Because there are numerous relational databases, each having many fields, it can take significant time to track down particular details embedded in this mass of information.

In addition to the complexity of the information, many applications are unable to handle the massive volumes of data. For example, common desktop software such as Microsoft Excel cannot handle more than 65,600 rows of data. Data Miner overcomes these limitations.



Integrating Primary Emission Databases

Data Miner is a large database client-server processing system that facilitates the assembly of multi-source emissions inventories for air and risk modeling. With Data Miner, you can:

- Create and edit database table relationships and views for complete access to all emissions attributes maintained in the database
- Link source-specific parameters necessary for air and risk modeling from multiple database tables through the Data Organizer component
- Extract the source-specific data sets by constructing and executing simple or complex data queries in the Query Builder component

Supported Database Structures

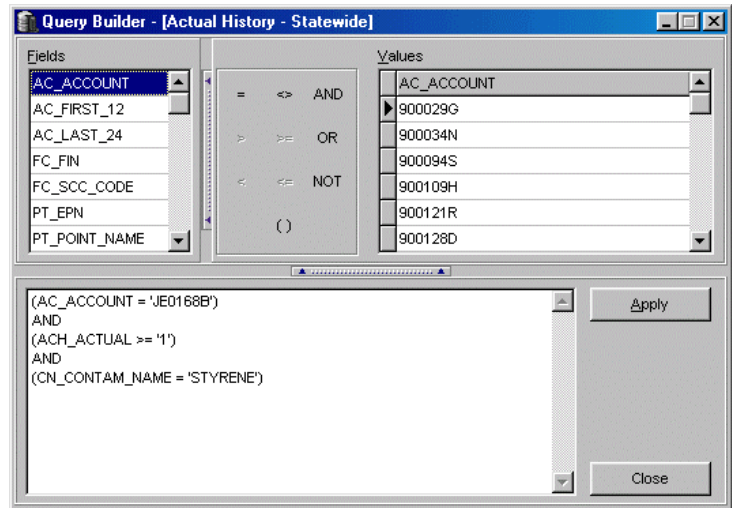
You can use any database that is in the Interbase format. EPA is currently using Data Miner to access the following databases:

- Louisiana Toxic Emissions Data Inventory (TEDI)
- Oklahoma Department of Environment Quality Toxics Emissions Inventory
- Texas Point Source Database (PSDB)
- Federal Toxic Release Inventory (TRI)

Key Components

Data Miner consists of two main components:

- **The Data Organizer Editor**, a tool that allows you to:
 - Create or delete Views of the Tables contained in the database
 - Add and remove Tables from the Views
 - Add and remove Fields to be displayed under the Tables
- **The Query Builder**, a tool that allows you to:
 - Compose SQL Queries with a few mouse clicks
 - Generate reports
 - Export data as comma-separated text (.csv) or Microsoft Access (.mdb) formats.



System Requirements

To run Data Miner, you need:

- Windows 98, 2000, XP, ME
- 56 MB RAM (128 MB recommended)
- 20 megabytes disk space (plus space to store the emissions databases)
- Borland Interbase Server (included with Data Miner)

Additional Information

For additional information on Data Miner or the RAIMI Program, contact Jeff Yurk, EPA Region 6, at yurk.jeffrey@epa.gov or via phone at 214-665-8309.

