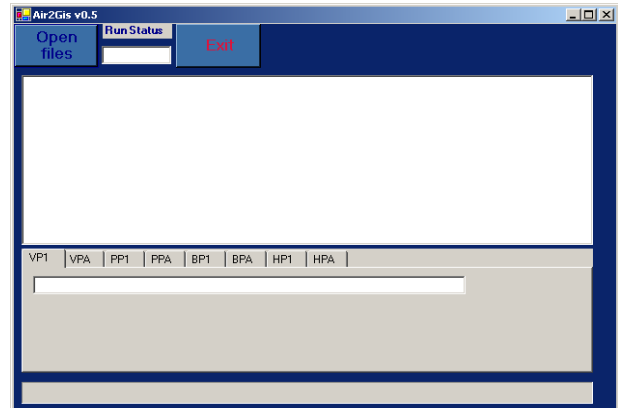

RAIMI Tools Fact Sheet: Air2GIS

Assembling ISCST3 plot files

AIR2GIS is a software tool that assembles the source-specific ISCST3 modeling output files and creates a single file for import into Risk Management Analysis Platform (Risk-MAP). Consolidating the ISCST3 plot files into a single file provides for grid node and source specific tracking of results through Risk-MAP.



Extracting Air Parameter Values to Import into Risk-MAP

The air model generates air parameter values at each grid node (approximately 7,500-8,000 nodes) including a discrete value for the one-hour average air concentration for use in acute risk assessment, and annual average values for air concentration, dry deposition and wet deposition for use in chronic risk assessment.

AIR2GIS extracts the sixteen air parameter values from the eight air model plot files based on grid node location and merges them into a single air parameter value file for each source. This file for each source, referred to as the 'A2G' file, is imported into Risk-MAP to support further analysis.

Additional Information

For additional information on AIR2GIS or the RAIMI Program, contact Steve Thompson, EPA Region 6, at thompson.steve@epa.gov or via phone at 214-665-2769.

