

Appendix E

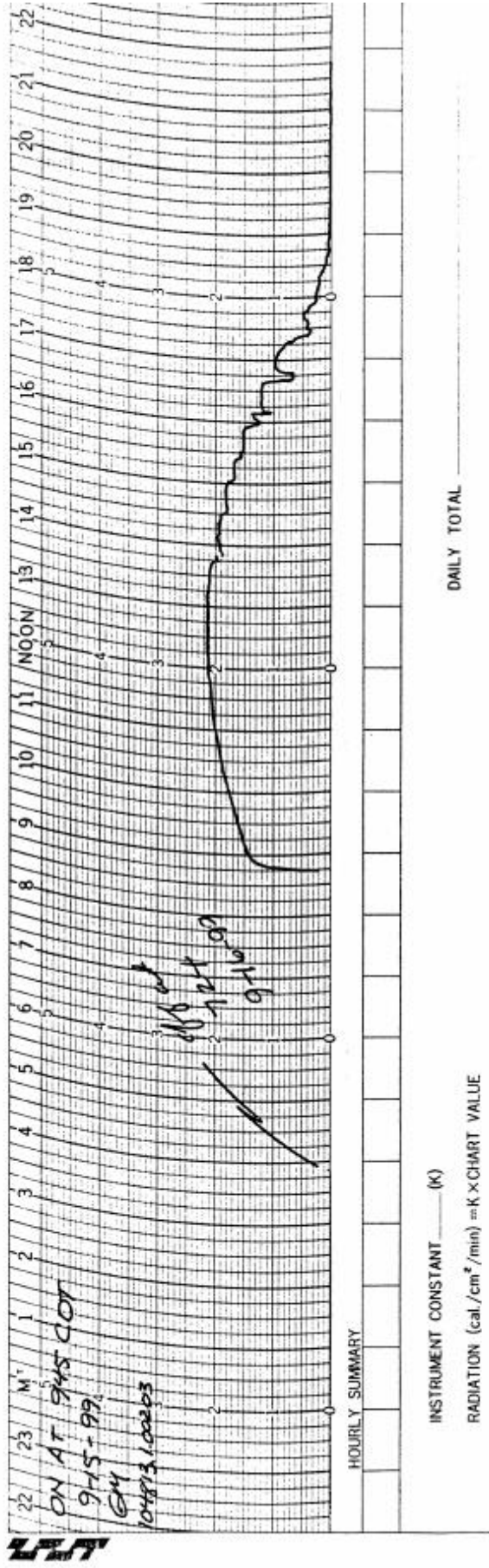
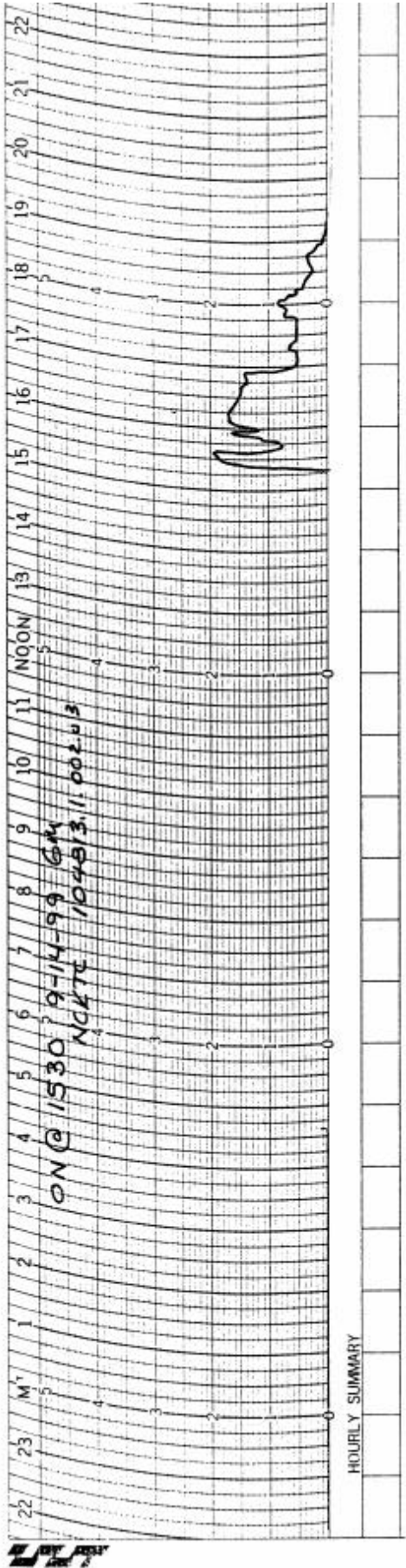
Second-Tier Meteorological Observations

UNCONTROLLED

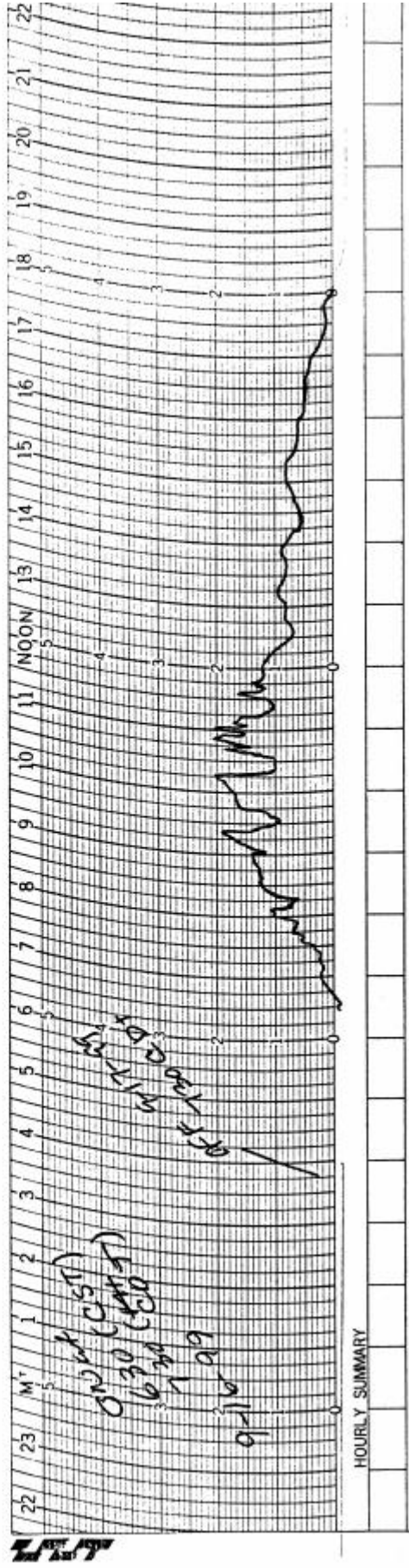
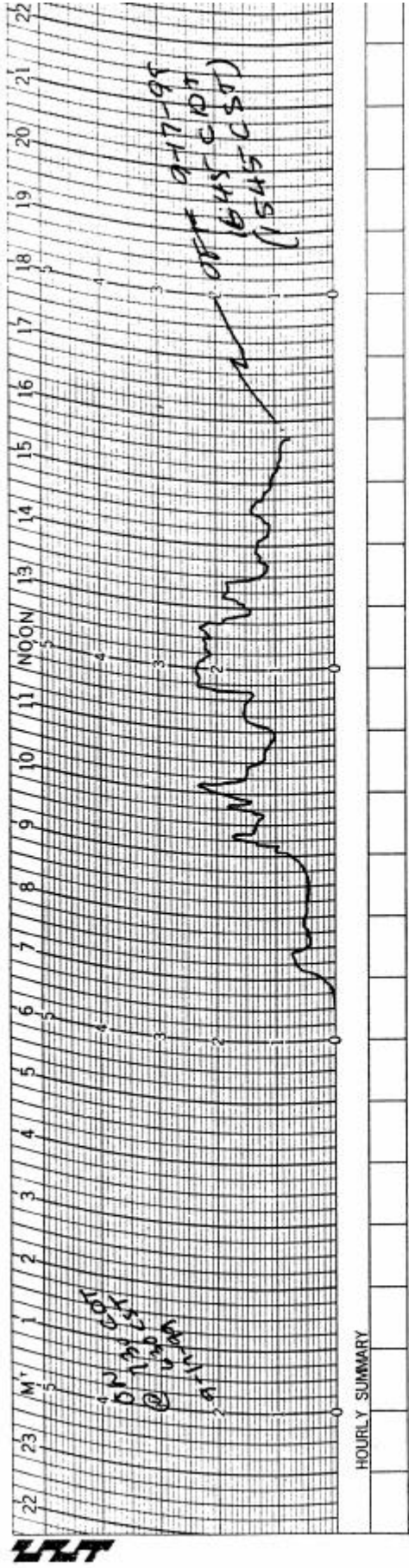
Meteorological Data (in CDT)

Date	Barometric Pressure	Dry Bulb	Wet Bulb	Cloud Cover	Water Height in Evap. Pan (in.)	Rain Gauge	Wind
9/14/99	28.80@1245	75.0@1245	59.0@1245				wind to E @ 1303
9/15/99	28.80@1000	63.0@1000	53.0@1000	0.1@0945		0" @ 0945	wind E to ESE around 10 mph
	29.00@1400	76.0@1400	60.0@1400				
	28.90@1525	76.0@1525	59.0@1525				
9/16/99	28.90@0835	54.0@0835	50.0@0835	0.8@0835	20 11/16 @ 0730	0" @ 0730	
	28.90@0931	62.0@0931	54.0@0931	0.7@0931			
	28.90@1017	67.0@1017	55.0@1017	0.8@1017			
	28.95@1130	66.0@1130	55.0@1130	0.8@1130			
9/17/99	28.80@0845	59.5@0845	54.5@0845	0.9@0845	20 9/16 @ 0730	0" @ 1645	
	28.80@1000	67.0@1000	56.0@1000	1.0@1000	20 3/8 @ 1645		
	28.90@1057	69.0@1052	58.0@1052	0.7@1052			
	28.90@1240	72.0@1238	58.0@1238	0.6@1238			
	28.90@1321	78.0@1322	59.5@1322	0.4@1322			
		76.0@1411	59.5@1411	0.5@1411			
9/22/99	28.75@0850	51.0@0850	49.0@0850	0.0@0850	19 13/16 @ 0745	0.25" @ 0745	
	28.75@0930	58.0@0938	52.0@0938	0.0@0938			
	28.80@1006	62.0@1006	55.0@1006	0.0@1006			
	28.95@1048	68.0@1047	58.0@1047	0.0@1047			
	28.80@1224	77.0@1224	61.0@1224	0.0@1224			
	28.80@1253	78.5@1253	62.0@1253	0.0@1253			
	28.95@1326	79.0@1326	62.0@1326	0.0@1326			
	28.90@1405	81.0@1400	63.0@1400	0.0@1400			
	28.90@1429	82.5@1429	64.0@1429	0.0@1429			
9/23/99	28.50@0852	58.0@0852	56.0@0852	0.3@0852	19 1/2 @ 0745	0" @ 0745	
	28.50@0920	59.5@0920	55.0@0920	0.3@0920	19 3/8 @ 1500	0" @ 1500	
	28.50@0950	64.5@0950	58.0@0950	0.3@0950			
	28.55@1020	67.5@1019	59.0@1019	0.3@1019			
	28.55@1043	71.0@1043	60.0@1043	0.3@1043			
	28.55@1102	43.0@1104	61.0@1104	0.3@1104			

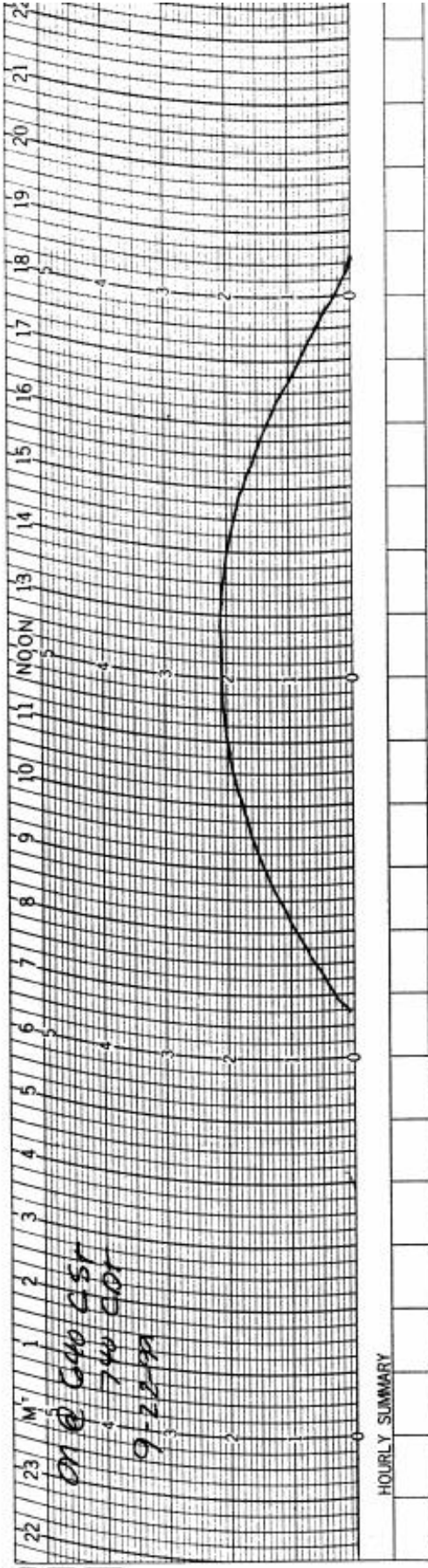
UNCONTROLLED



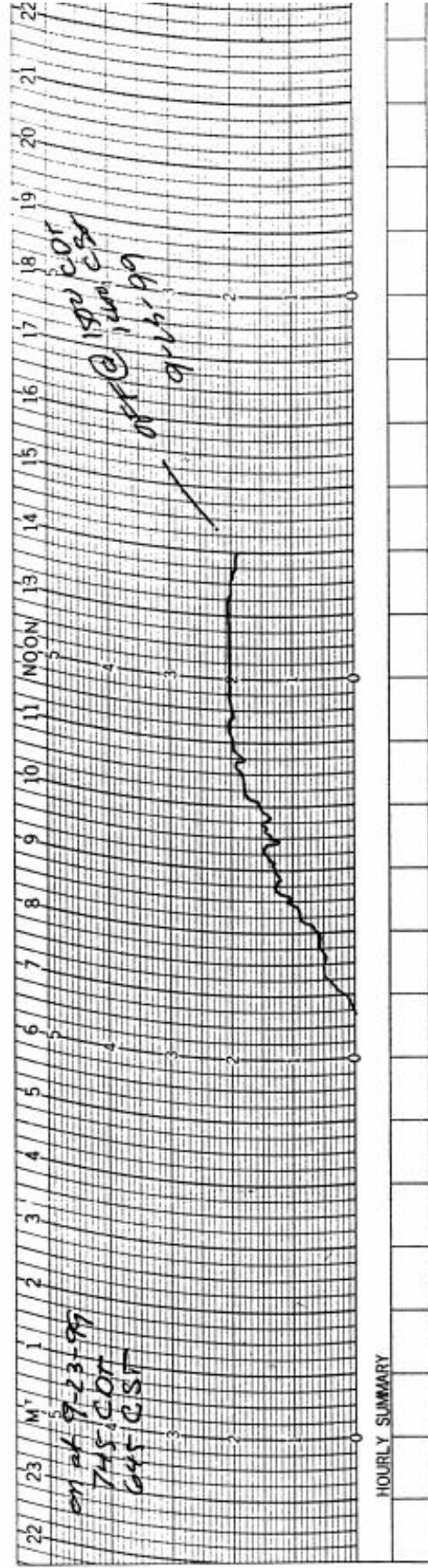
UNCONTROLLED



UNCONTROLLED



DAILY TOTAL _____



DAILY TOTAL _____