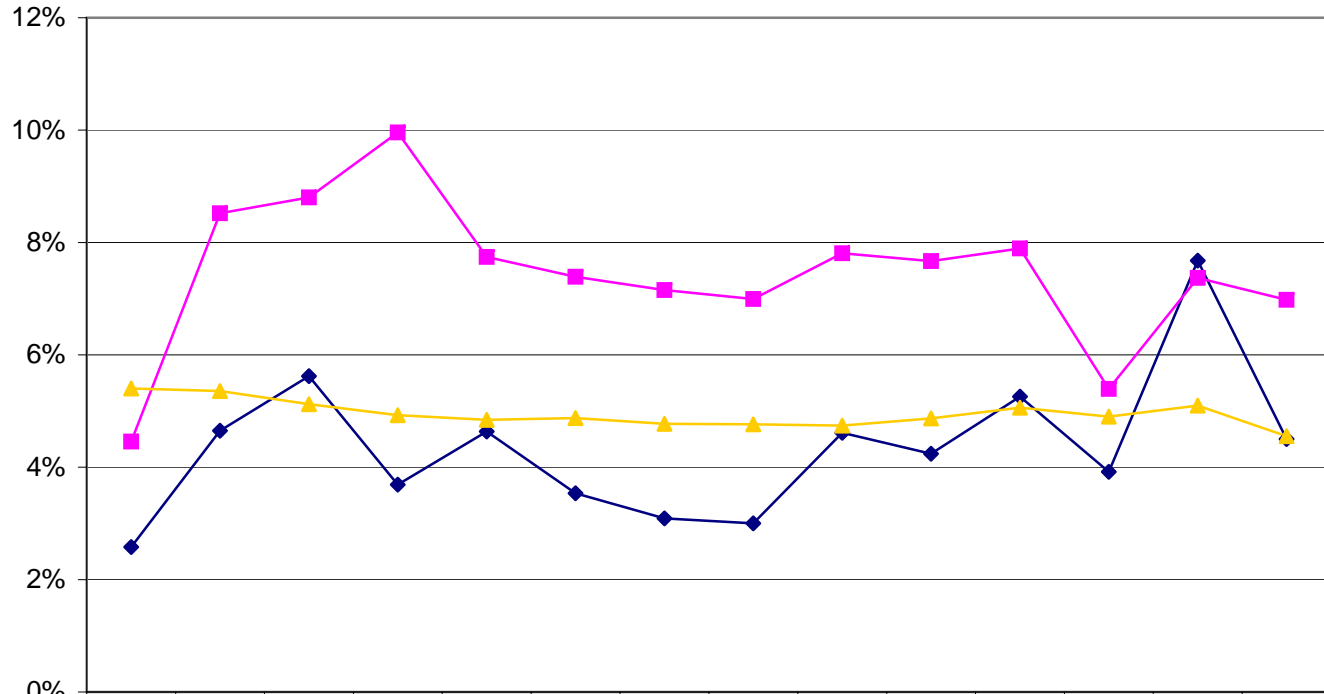


## DOT Hires, Separations and Onboard Strength of People with Disabilities

Permanent Employees

FY92-FY05



◆ Hires, As % of DOT Hires	2.6%	4.7%	5.6%	3.7%	4.6%	3.5%	3.1%	3.0%	4.6%	4.2%	5.3%	3.9%	7.7%	4.5%
■ Losses, As % of DOT Losses	4.5%	8.5%	8.8%	10.0%	7.7%	7.4%	7.2%	7.0%	7.8%	7.7%	7.9%	5.4%	7.4%	7.0%
▲ Onboard, As % of DOT Onboard	5.4%	5.4%	5.1%	4.9%	4.8%	4.9%	4.8%	4.8%	4.7%	4.9%	5.1%	4.9%	5.1%	4.6%