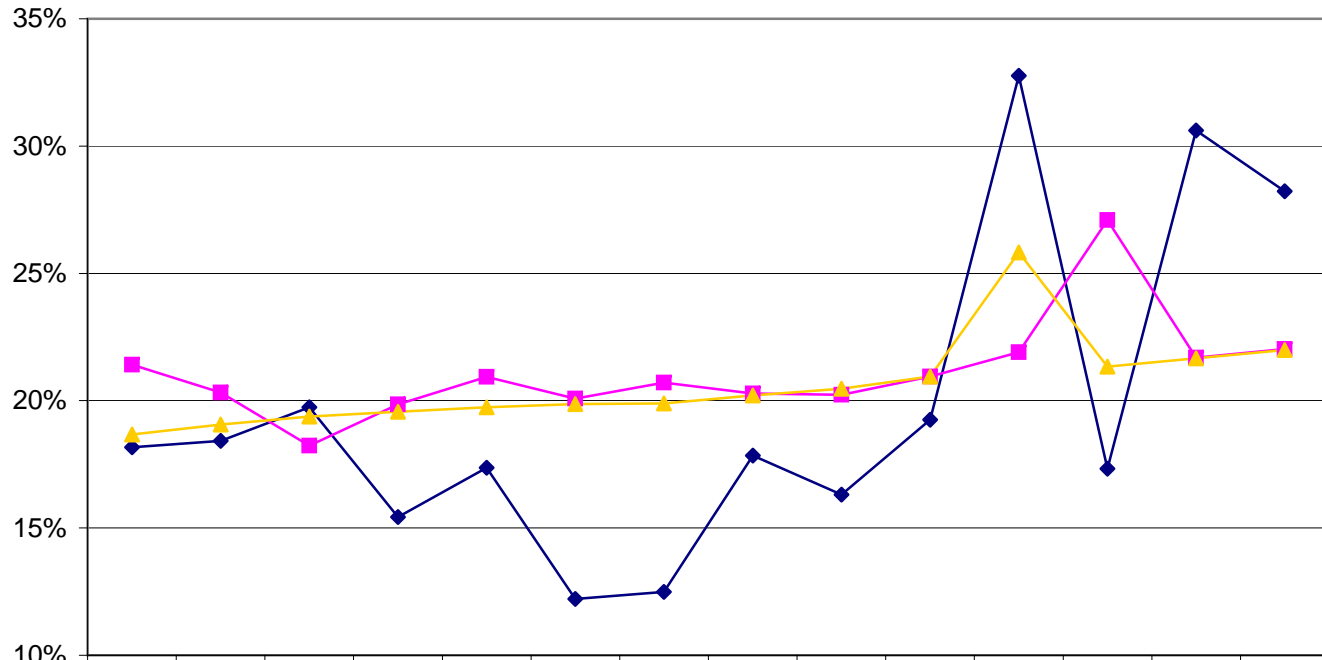


DOT Minority Hires, Separations and Onboard Strength
 Permanent Employees
 FY92-FY05



	1992	1993	1994	1995	1996	1997	1998	1999	2000	2001	2002	2003	2004	2005
◆ Hires, As % of DOT Hires	18.2%	18.4%	19.7%	15.4%	17.4%	12.2%	12.5%	17.8%	16.3%	19.3%	32.8%	17.3%	30.6%	28.2%
■ Losses, As % of DOT Losses	21.4%	20.3%	18.2%	19.9%	20.9%	20.1%	20.7%	20.3%	20.2%	20.9%	21.9%	27.1%	21.7%	22.0%
▲ Onboard, As % of DOT Onboard	18.7%	19.1%	19.4%	19.6%	19.7%	19.9%	19.9%	20.2%	20.5%	20.9%	25.8%	21.3%	21.7%	22.0%