

A Technology Framework for *No Child Left Behind* Success

Each state can create a powerful technology infrastructure through the successful implementation of these ten components. You need the right data supporting the right goals captured the right way. How does your framework currently rank? Check the status of your state's implementation within each component. The path is clear — more advanced technology will ensure better success with *No Child Left Behind*.

■ Basic Implementation ■ Proficient Implementation ■ Advanced Implementation

Data Systems

Disparate data systems, file standards, and data-collection

Data systems implemented and aligned around required content areas

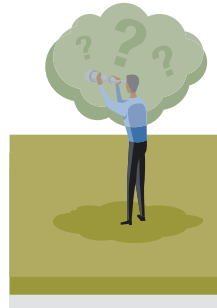
Data driven decision making (D3M) system implemented

Management plans linked to standards, instruction, and resources

Your State Department of Education



Academic / Other Performance Standards



Standards not developed or adopted

Standards and management processes developed, adopted, and published

Long-range plans, long-range vision by education agency leaders, and involvement of policy and user groups

Adequate infrastructure: storage capacity, security controls, and support (policy, funding, and human resources)

Aging infrastructure: no plans to upgrade

Technology Infrastructure

(architecture and management of hardware, software, network, and data)

Data Standards

Each office with unique definitions and codes

Standards and definitions published in system-wide data dictionary

Data standards electronically exchanged and adopted by all applications

Data Dictionary

www

D3M

Data Quality

Data quality not monitored

Data quality is clearly defined, monitored, and required

D3M practiced confidently; data providers monitor and rely on quality data

I can trust this.

I accept this as accurate.

I'll check it!

Get the data right

Get the right data

Get the right data management

Get the data right away

Get the data the right way pushed ahead

NO CHILD LEFT BEHIND

PBDM/EDEN Readiness... Data Driven Decision Making

D.O.E.

0100100110101010

Electronic Exchange of Records

Electronic records follow students, SIF standards, application interoperability

Electronic exchange of records; system interoperability

Data keyed from paper records

SIF

WAN

24/7, fast connections

Constant, adequate speed connections

Inconsistent access; dial-up or under-sized capacity

Network Connectivity

Aligned Assessments / Measures

Performance measures predate standards

Assessments aligned with up-to-date standards

Assessments measure targets reliably

Effective School

Automated Data Systems

Collection via paper forms generates "isolated" data files

Automated systems collect and share data for clearly defined timeperiods

Individual-level statistics calculated and shared via web-based reports

National standards incorporated into repository; longitudinal analysis enabled by standards

Data repository consolidates data; security is managed at user and specific data level

Aggregate statistics compiled by schools and districts; no data usage/access policy

Data Consolidation, Security, and Access

Hacker

Want to learn how your SEA can move from one level to the next? ESP Solutions Group can provide your SEA with extraordinary insight into K-12 education data systems and psychometrics. Our team is comprised of industry experts who helped pioneer the concept of "data driven decision making." ESP personnel have advised all 52 state education agencies as well as the U.S. Department of Education on the practice of K-12 school data management. We are regarded as leading experts in understanding the data and technology implications of the *No Child Left Behind Act* (NCLB), Performance Based Data Management Initiative (PBDMI), and the Schools Interoperability Framework (SIF). Get your free copy of the accompanying whitepaper at www.espsolutionsgroup.com/sea