

Climate Leaders Inventory Manager for Businesses

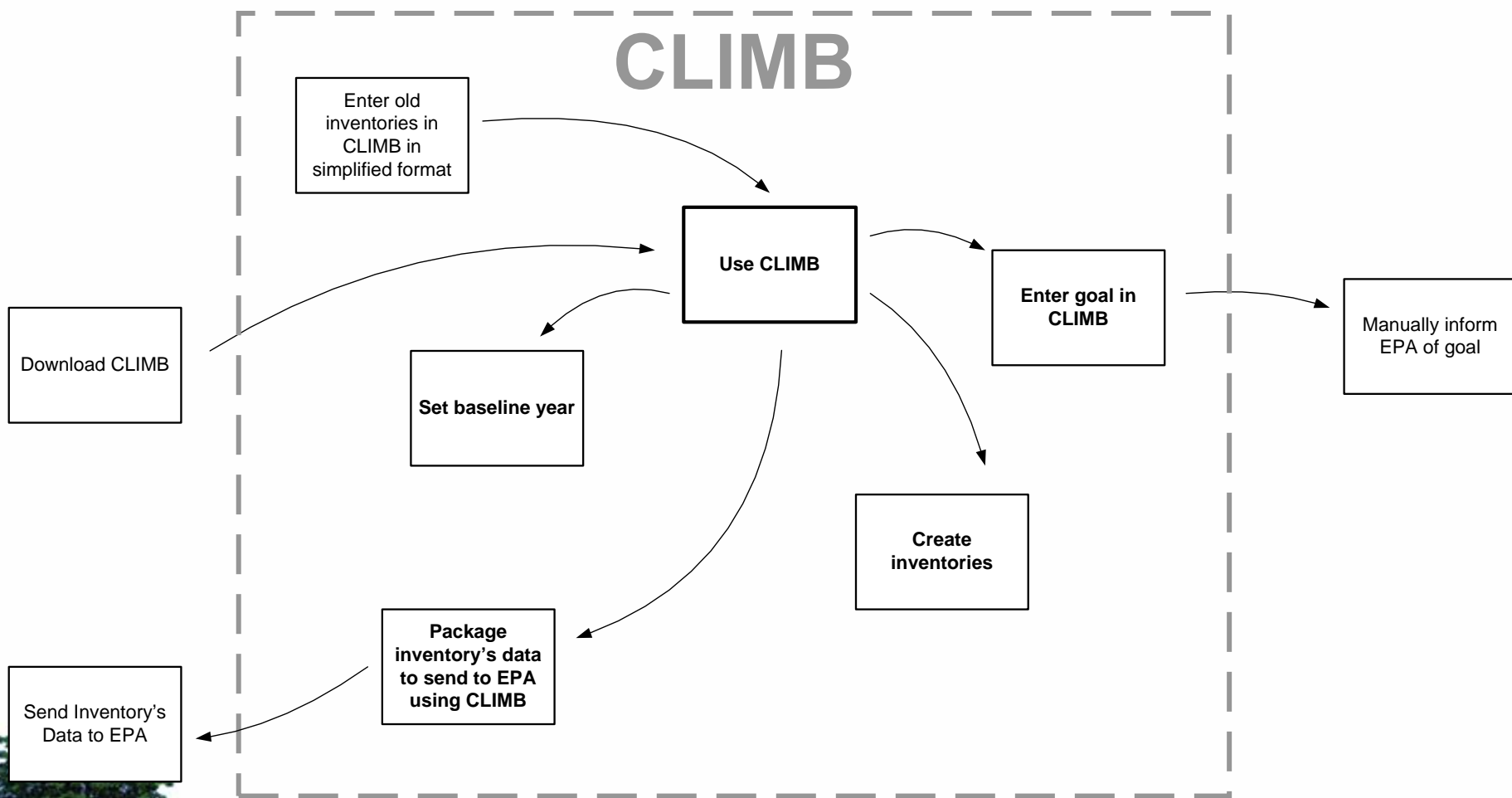


CLIMB Prototype Demonstration

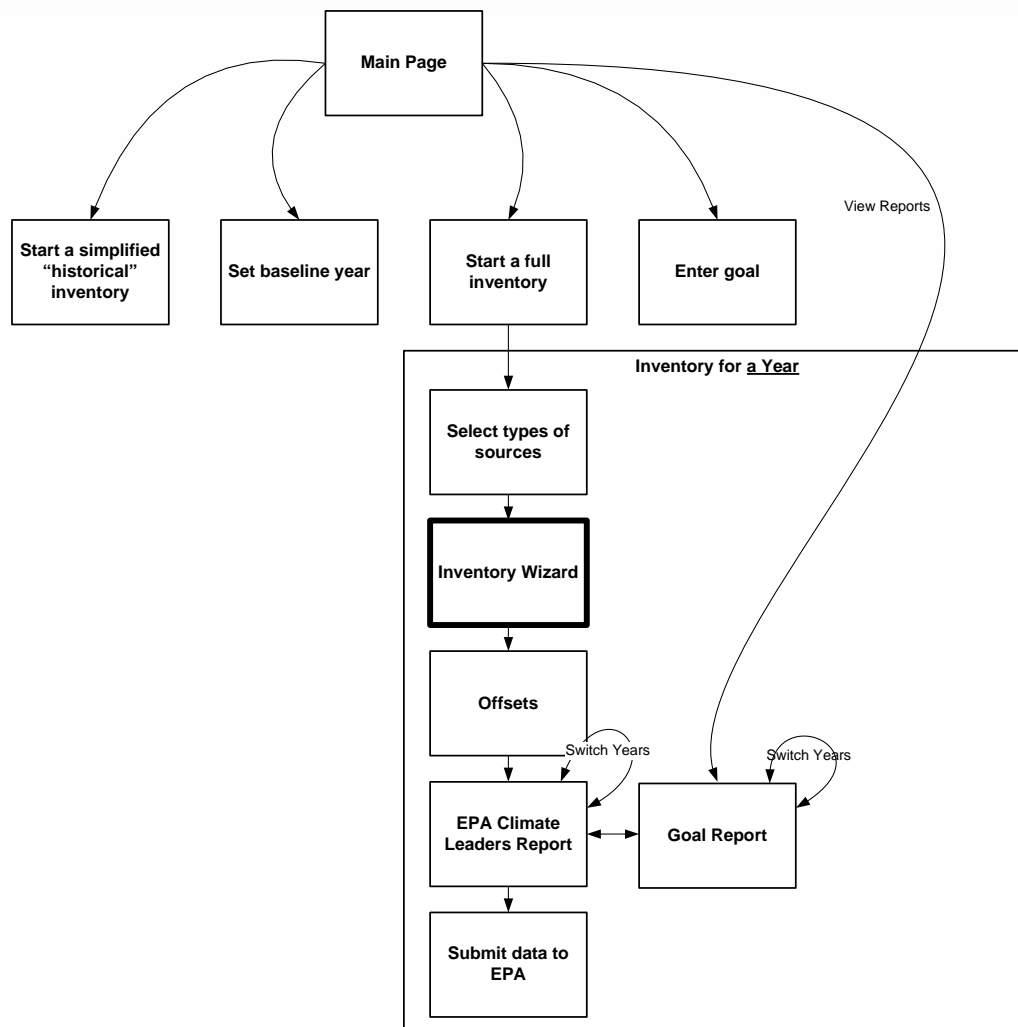
October 6, 2008



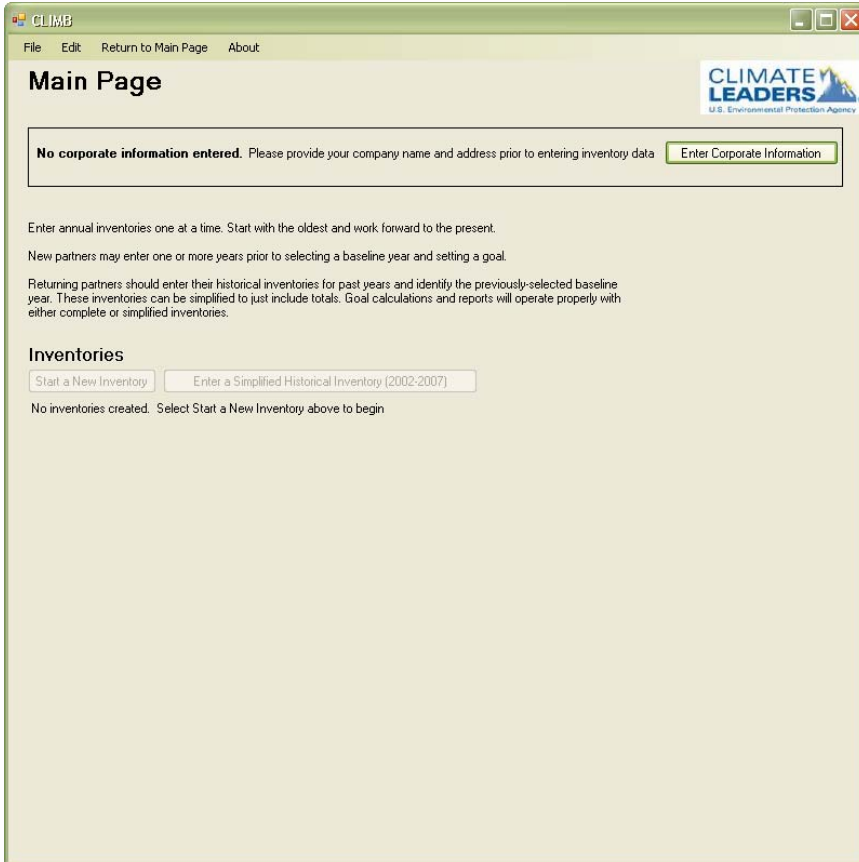
Using CLIMB to Achieve your Reduction Goals



Navigating CLIMB



CLIMB Main Page



CLIMB

File Edit Return to Main Page About

Main Page

CLIMATE LEADERS
U.S. Environmental Protection Agency

No corporate information entered. Please provide your company name and address prior to entering inventory data.

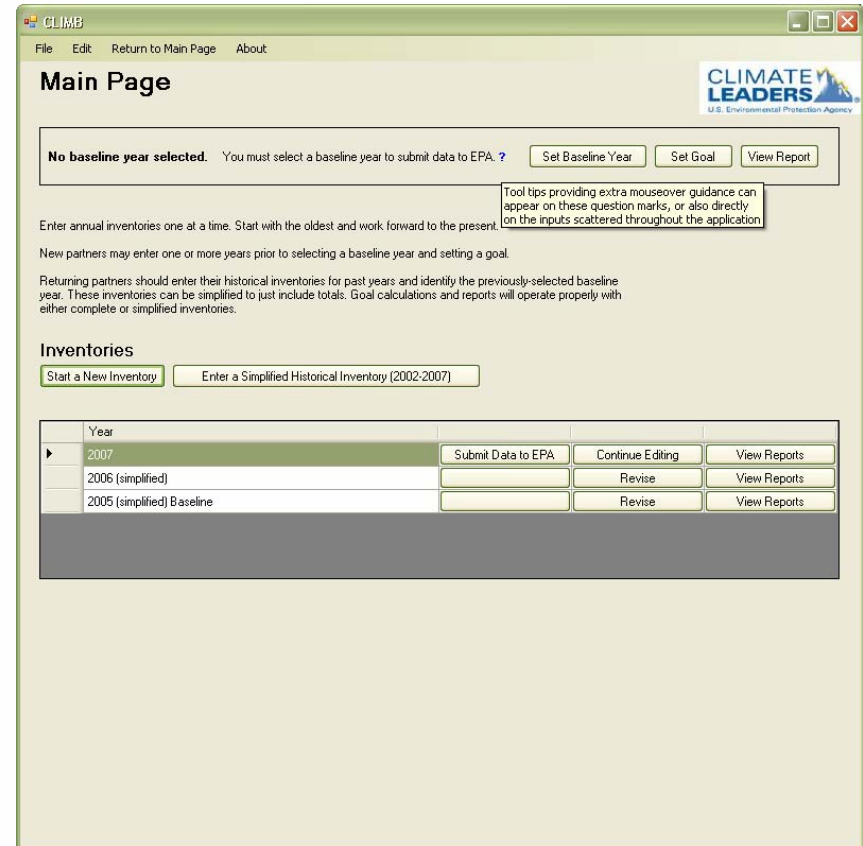
Enter annual inventories one at a time. Start with the oldest and work forward to the present.

New partners may enter one or more years prior to selecting a baseline year and setting a goal.

Returning partners should enter their historical inventories for past years and identify the previously-selected baseline year. These inventories can be simplified to just include totals. Goal calculations and reports will operate properly with either complete or simplified inventories.

Inventories

No inventories created. Select Start a New Inventory above to begin



CLIMB

File Edit Return to Main Page About

Main Page

CLIMATE LEADERS
U.S. Environmental Protection Agency

No baseline year selected. You must select a baseline year to submit data to EPA. ?

Enter annual inventories one at a time. Start with the oldest and work forward to the present.

New partners may enter one or more years prior to selecting a baseline year and setting a goal.

Returning partners should enter their historical inventories for past years and identify the previously-selected baseline year. These inventories can be simplified to just include totals. Goal calculations and reports will operate properly with either complete or simplified inventories.

Inventories

Year			
▶ 2007	<input type="button" value="Submit Data to EPA"/>	<input type="button" value="Continue Editing"/>	<input type="button" value="View Reports"/>
2006 (simplified)	<input type="button" value=""/>	<input type="button" value="Revise"/>	<input type="button" value="View Reports"/>
2005 (simplified) Baseline	<input type="button" value=""/>	<input type="button" value="Revise"/>	<input type="button" value="View Reports"/>

Tool tips providing extra mouseover guidance can appear on these question marks, or also directly on the inputs scattered throughout the application

Enter Corporate Information

CLIMB

File Edit Return to Main Page About

Enter Corporate Information

CLIMATE LEADERS
U.S. Environmental Protection Agency

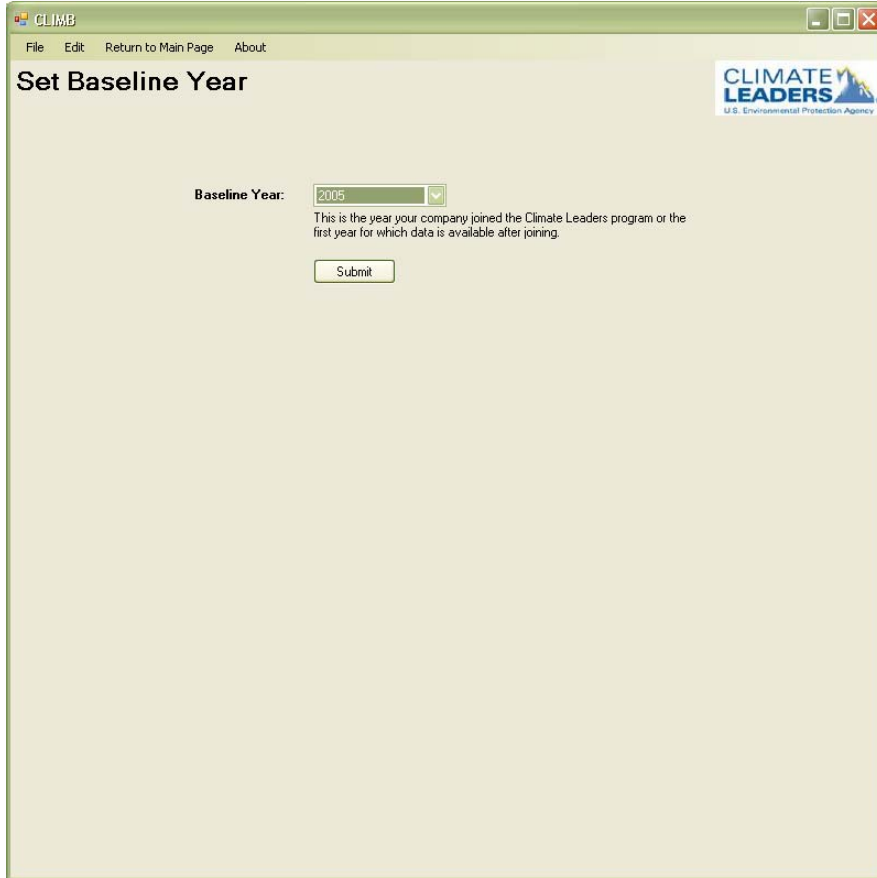
Company Name:

Company Address:

Submit

Company Name is required.

Setting Baseline Year and Goals



CLIME

File Edit Return to Main Page About

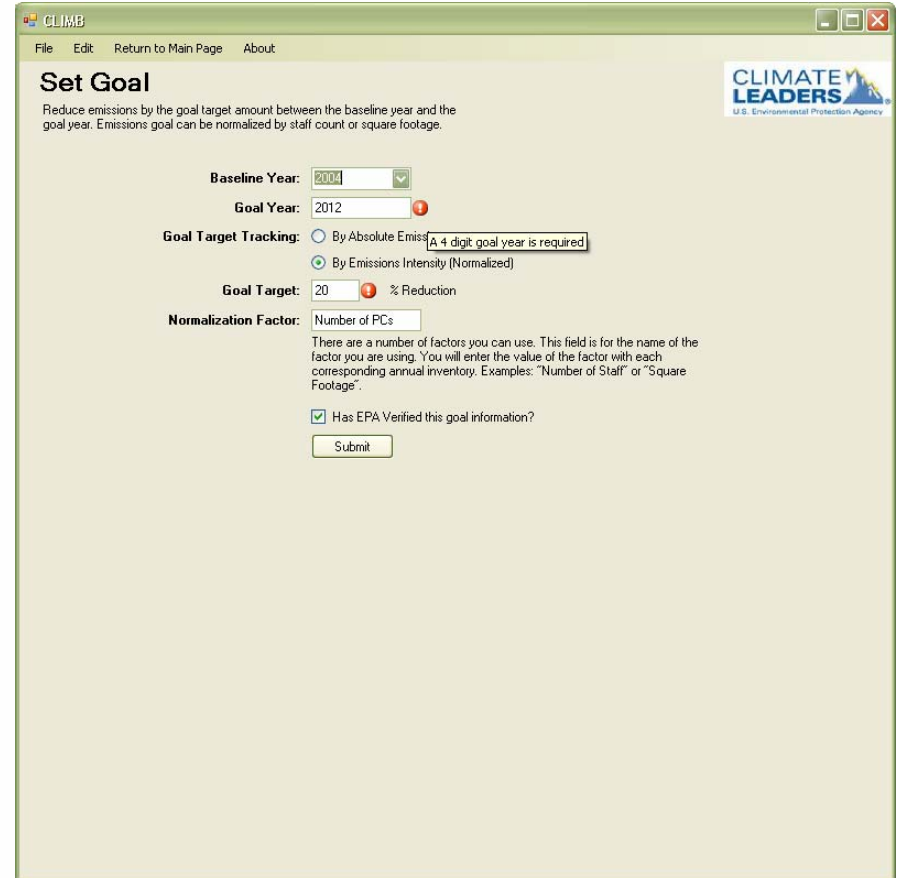
Set Baseline Year

Baseline Year: 2005

This is the year your company joined the Climate Leaders program or the first year for which data is available after joining.

Submit

CLIMATE LEADERS
U.S. Environmental Protection Agency



CLIME

File Edit Return to Main Page About

Set Goal

Reduce emissions by the goal target amount between the baseline year and the goal year. Emissions goal can be normalized by staff count or square footage.

Baseline Year: 2007

Goal Year: 2012

Goal Target Tracking: By Absolute Emissions [A 4 digit goal year is required]
 By Emissions Intensity (Normalized)

Goal Target: 20 % Reduction

Normalization Factor: Number of PCs

There are a number of factors you can use. This field is for the name of the factor you are using. You will enter the value of the factor with each corresponding annual inventory. Examples: "Number of Staff" or "Square Footage".

Has EPA Verified this goal information?

Submit

CLIMATE LEADERS
U.S. Environmental Protection Agency


Enter a Historic Simplified Inventory

CLIMB

File Edit Return to Main Page About

Simplified Inventory

Select Inventory Year:



	Source Emissions	Total Emissions	
Direct Emissions			
Fire Suppression Equipment	<input type="text"/>	<input type="text"/>	CO2-e (metric Tons)
Stationary Combustion - Traditional Sources	<input type="text"/>	<input type="text"/>	CO2-e (metric Tons)
Stationary Combustion - Waste Streams	<input type="text"/>	<input type="text"/>	CO2-e (metric Tons)
Meetings & Events	<input type="text"/>	<input type="text"/>	CO2-e (metric Tons)
Mobile Sources	<input type="text"/>	<input type="text"/>	CO2-e (metric Tons)
Refrigeration / AC Equip. Use	<input type="text"/>	<input type="text"/>	CO2-e (metric Tons)
Industrial Processes	<input type="text"/>	<input type="text"/>	CO2-e (metric Tons)
Indirect Emissions			
Purchased and Consumed Electricity	<input type="text"/>	<input type="text"/>	CO2-e (metric Tons)
Purchased and Consumed Steam	<input type="text"/>	<input type="text"/>	CO2-e (metric Tons)
Other Emissions	<input type="text"/>	<input type="text"/>	CO2-e (metric Tons)
Optional Emissions			
Employee Business Travel	<input type="text"/>	<input type="text"/>	CO2-e (metric Tons)
Employee Commuting	<input type="text"/>	<input type="text"/>	CO2-e (metric Tons)
Product Transport	<input type="text"/>	<input type="text"/>	CO2-e (metric Tons)
Biomass Consumption in Mobile Sources	<input type="text"/>	<input type="text"/>	CO2-e (metric Tons)
SUBTOTAL Emissions			
Subtotal GHG Emissions	<input type="text"/>	<input type="text"/>	CO2-e (metric Tons)
Subtotal Optional Emissions	<input type="text"/>	<input type="text"/>	CO2-e (metric Tons)
Offsets			
Offset Amount (Subtracted from GHG Emissions)	<input type="text"/>	<input type="text"/>	CO2-e (metric Tons)
Total Emissions			
Total GHG Emissions	12345	77777	CO2-e (metric Tons)
Total Optional Emissions	54321	77777	CO2-e (metric Tons)

Submit

Selecting Emissions Sources

CLIMB

File Edit Return to Main Page About

Sources

If this is your first inventory, type the year in the box provided. Otherwise, the next year has automatically been assigned based on your previous inventories.

Select Inventory Year:


Select all sources that apply during this year:

Direct Emissions ?	Indirect Emissions ?
<input checked="" type="checkbox"/> Stationary Combustion Sources - Traditional Sources	<input checked="" type="checkbox"/> Purchase of Electricity
<input checked="" type="checkbox"/> Mobile Sources	<input type="checkbox"/> Purchase of Steam
<input checked="" type="checkbox"/> Refrigeration and Air Conditioning Equipment	
<input type="checkbox"/> Meetings & Events	
<input checked="" type="checkbox"/> Stationary Combustion Sources - Waste Streams	
<input checked="" type="checkbox"/> Industrial Processes	
<input type="checkbox"/> Fire Suppression Equipment	

Select all sources that apply during this year (optional):

Optional Emissions	Employee Commuting	Product Transport
<input checked="" type="checkbox"/> Business Travel	<input type="checkbox"/> Personal Vehicle	<input type="checkbox"/> Personal Vehicle
<input type="checkbox"/> Rail	<input type="checkbox"/> Rail	<input type="checkbox"/> Rail
<input type="checkbox"/> Bus	<input type="checkbox"/> Bus	<input type="checkbox"/> Watercraft / Aircraft
<input type="checkbox"/> Air		

Submit



Sample Data Entry – Stationary Combustion

CLIMB

File Edit Return to Main Page About

1.0. Direct Emissions from Stationary Combustion Sources (Standard)

Enter the total fuel combusted for each unit, facility, or site (by fuel type)


	Source ID	Source Description	Fuel Combusted	Quantity Combusted	Units
	BLR-012	East Power Plant	Bituminous Coal	500	tons
/	WG-0001	Wash Gas	Natural Gas	5000	scf
*					

< Back

Next >

Total Company Emissions for YYYY

Total GHG Emissions ? **0** CO2-e (metric tons)



Sample Data Entry – Refrigeration/AC

CLIME

File Edit Return to Main Page About

3.0 Direct Emissions from Refrigeration and Air Conditioning Equipment

CLIMATE LEADERS
U.S. Environmental Protection Agency

Select an option

Option 1: **Materials Balance Method (preferred)**
Enter company-wide total gases stored and transferred (by gas).

Option 2: **Simplified Materials Balance Method**
Enter company-wide total gases in units (by gas).

Option 3: **Screening Method**
Enter refrigerant information for each unit or group of units (by refrigerant).

< Back Next >

CLIME

File Edit Return to Main Page About

3.0 Direct Emissions from Refrigeration and Air Conditioning Equipment

CLIMATE LEADERS
U.S. Environmental Protection Agency

Simplified Material Balance Method
Enter company-wide Refrigeration and Air Conditioning gas in units (by gas)

Gas	Gas GWP	New Units Change (lb)	New Units Capacity (lb)	Existing Units Recharge (lb)	Disposed Units Capacity (lb)	Disposed Units Recovered (lb)	CO2 Emissions (lb)
CO2	1						
HFC-23	11700						
HFC-32	650						
CF4	6500						
SF6	23900						

< Back Next >

Emissions Offsets and Green Power

CLIME

File Edit Return to Main Page About

Emissions Offsets

CLIMATE LEADERS
U.S. Environmental Protection Agency

Climate Leader Offset Projects ?

	Source ID	Source Description	Project Protocol	Source of Offset	Offset Amount CO2-e (metric tons)
	PUR-123	Carbon Offset Purchase		Clean Energy	1000
▶*					

< Back Has EPA verified this information? ? Next >

CLIME

File Edit Return to Main Page About

Green Power

CLIMATE LEADERS
U.S. Environmental Protection Agency

	Source ID	Source Description	Type of Green Power	Units	Source of Offset	Region	Amount CO2-e (metric tons)
/	PV-0001	PhotoVoltaic			Solar Paneling	SRVC	1000
*							

< Back Has EPA verified this information? Next >

Reporting

CLIMB

File Edit Return to Main Page About

EPA Climate Leaders Report for 2007

CLIMATE LEADERS
U.S. Environmental Protection Agency

Target: xx% reduction in GHG emissions between baseline year of ZZZZ and target year of YYYY

Submit this Data to EPA

Direct Emissions		
Fire Suppression Equipment	11111	CO2-e (metric Tons)
Stationary Combustion - Traditional Sources	11111	CO2-e (metric Tons)
Stationary Combustion - Waste Streams	11111	CO2-e (metric Tons)
Meetings & Events	11111	CO2-e (metric Tons)
Mobile Sources	11111	CO2-e (metric Tons)
Refrigeration / AC Equip. Use	11111	CO2-e (metric Tons)
Industrial Processes	11111	CO2-e (metric Tons)
Indirect Emissions		
Purchased and Consumed Electricity	11111	CO2-e (metric Tons)
Purchased and Consumed Steam	11111	CO2-e (metric Tons)
Other Emissions	11111	CO2-e (metric Tons)
Optional Emissions		
Employee Business Travel	11111	CO2-e (metric Tons)
Employee Commuting	11111	CO2-e (metric Tons)
Product Transport	11111	CO2-e (metric Tons)
Biomass Consumption in Mobile Sources	11111	CO2-e (metric Tons)
SUBTOTAL Emissions		
Subtotal GHG Emissions	11111	CO2-e (metric Tons)
Subtotal Optional Emissions	11111	CO2-e (metric Tons)
Offsets		
Offset Amount (Subtracted from GHG Emissions)		CO2-e (metric Tons)
Total Emissions		
Total GHG Emissions	77777	CO2-e (metric Tons)
Total Optional Emissions	77777	CO2-e (metric Tons)

Timing and Feedback

- Targeting an April 2009
- Please send your thoughts, feedback and ideas to:

