

# **EPA Climate Leader Commitment**

March 2007 Status Report



## Overview

---

- Bank of America facility portfolio
- Definition of goal
- Progress towards goal
- Achieving the 9x9 goal
- Other bank activities and achievements



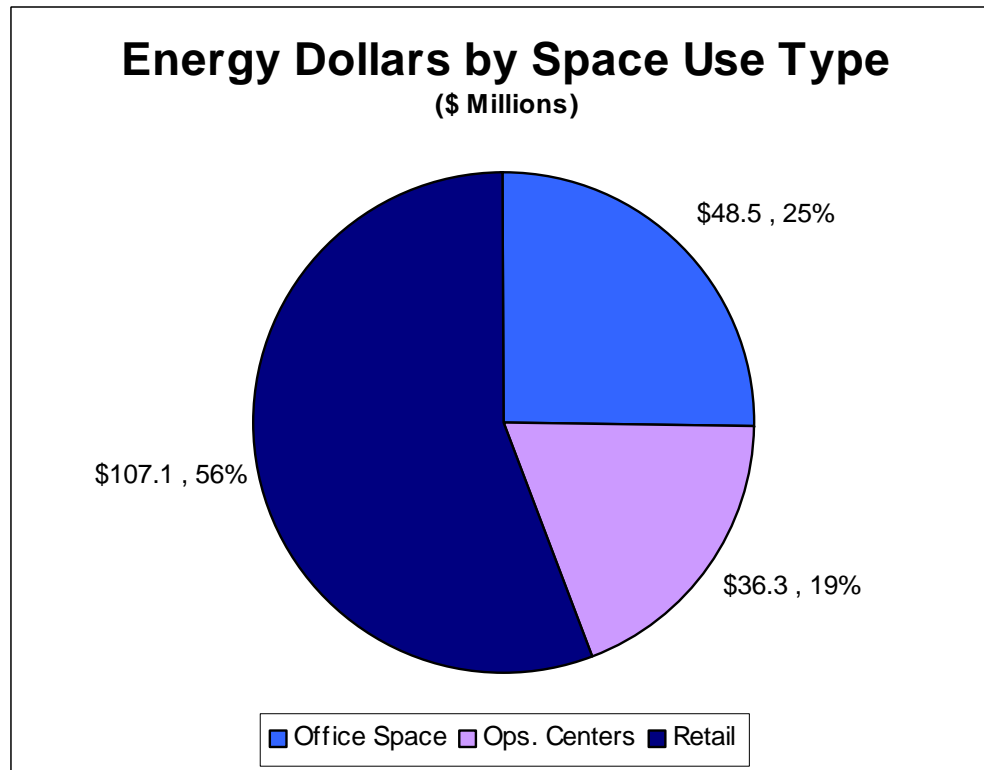
# Portfolio Overview

---



# Portfolio Overview

---



- Retail – Customer focused space
- Admin - General office space
- Operations Centers – Facilities that house business operations

## Definition of the Goal

---

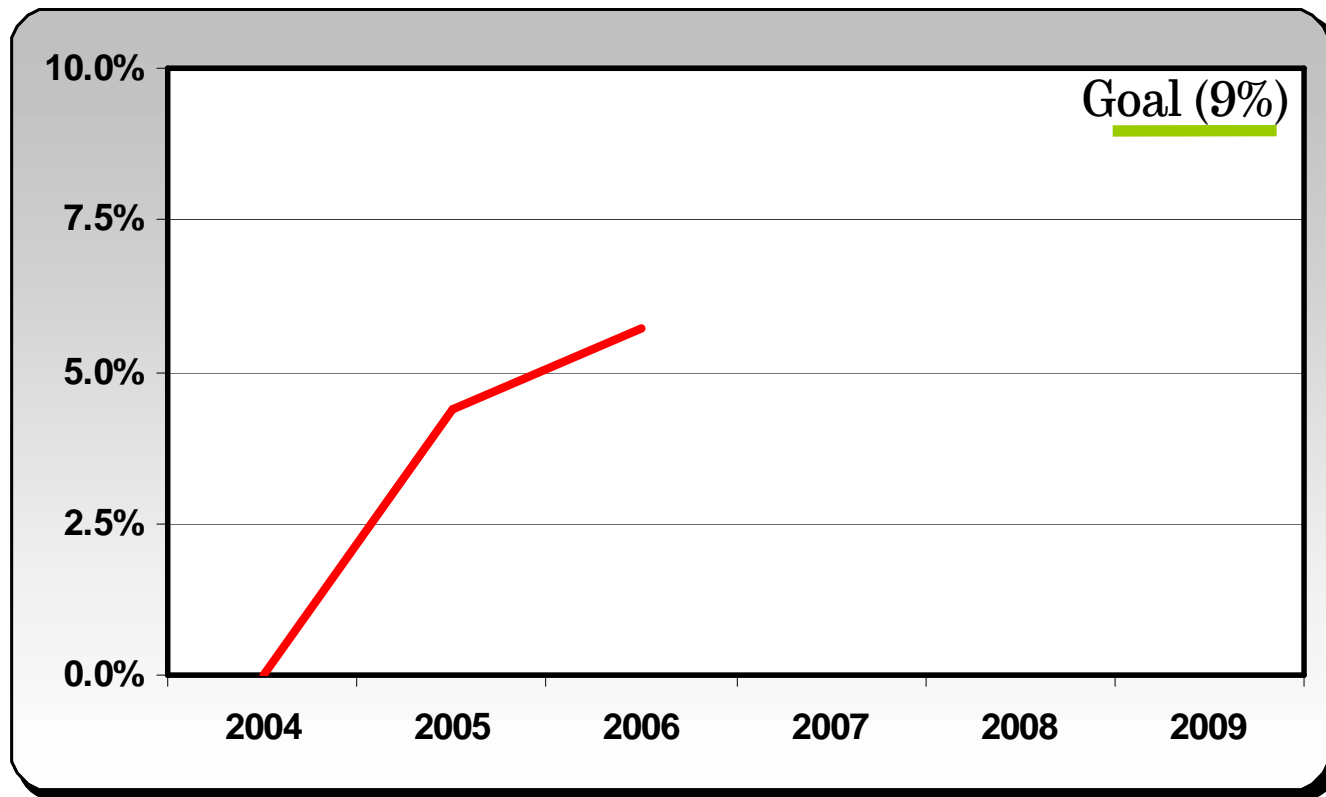
- **Absolute 9% reduction by 2009, or “9x9”**
- **Base year 2004**
  - Base Year 1,320,000 tCO<sub>2</sub>e
- **Emissions include**
  - 85% - Facility Electricity
  - 12% - Facility Natural Gas
  - 1.5% - Other facility fuels and steam
  - <1% - Service vehicle fuel
  - <1% - Jet Fuel
  - <1% - Other



# The 9x9 Progress

---

- Completed baseline
- 2005 actual reduction 4.38%
- 2006 estimated accumulated reduction 5.7%



# Achieving 9x9 - Activities

---

- **Efficient Technology, Capital Projects**
  - Through the use of capital, upgrade technologies
  - Ensure new construction capital is wisely spent on efficient technologies
- **Efficient Operations**
  - Impact energy behavior via Performance Metrics, Best Practices, Education, Benchmarks, & Incentives. “Do the best with what we have.”
- **Voice of Customer**
  - Work with our internal clients to reduce their energy usage
- **Energy Purchasing, Supply and Risk Management**
  - Use energy commodity purchasing strategies to lower prices and reduce risk
- **Energy Information**
  - Leverage energy information to track and influence performance



# Achieving 9x9 - Activities

---

## Retail

- Improving our new facility specification “LEED”
- Centrally manage and control operating schedules

## Operations Centers

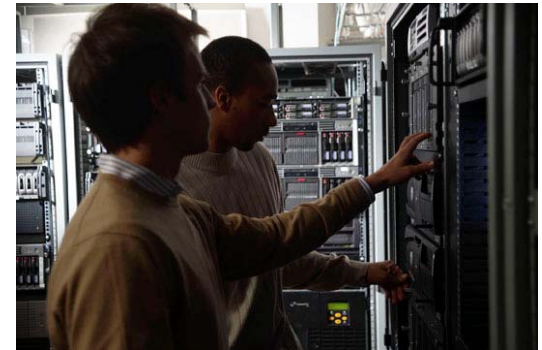
- Unplug unused servers
- Automated shutdown of networked PCs
- Advanced data center cooling strategies

## Admin Office Space

- Lighting, HVAC, performance contracts

## Portfolio Wide

- “Your Energy 2007”





# BAC's \$20B Environmental Initiative

---

- \$2.4B of new construction will be LEED certified
- \$100M investment in energy efficiency
- Reduced mortgages for Energy Star Homes
- Eco Friendly Credit Cards reward programs
- Carbon emissions trading
- Preferred lending to commercial LEED facilities
- Preferred lending and investing into clients that are creating and implementing sustainable products.
- Greater promotion of EPA SmartWay Program
- Expansion of hybrid vehicle program across the US

# Bank of America Tower at One Bryant Park

---



- Be the first high-rise building to strive for U.S. Green Building Council's LEED-CS (Leadership in Energy & Environmental Design for Core and Shell) Platinum certification
- Collects rainwater for non-potable applications
- Aerodynamically design, requires less steel
- Individually controlled AC for each work station
- Glass allows visible light but limits ultraviolet light.
- Ground water seepage will be used for geothermal cooling energy.
- Obtain 50% of building materials within 500 miles of site

## Results!

- Reduce energy consumption by a minimum of 50%
- Reduce potable water consumption by 50%
- Enhanced associate experience!

## Current BAC LEED Projects

---

- Bank of America Tower at One Bryant Park (New York City)
- Five retail banking centers (CA, NY, VA, TX)
- Cash Vault (Tempe, AZ)
- Ritz-Carlton Hotel and Tower (Charlotte)



**Bank of America**

