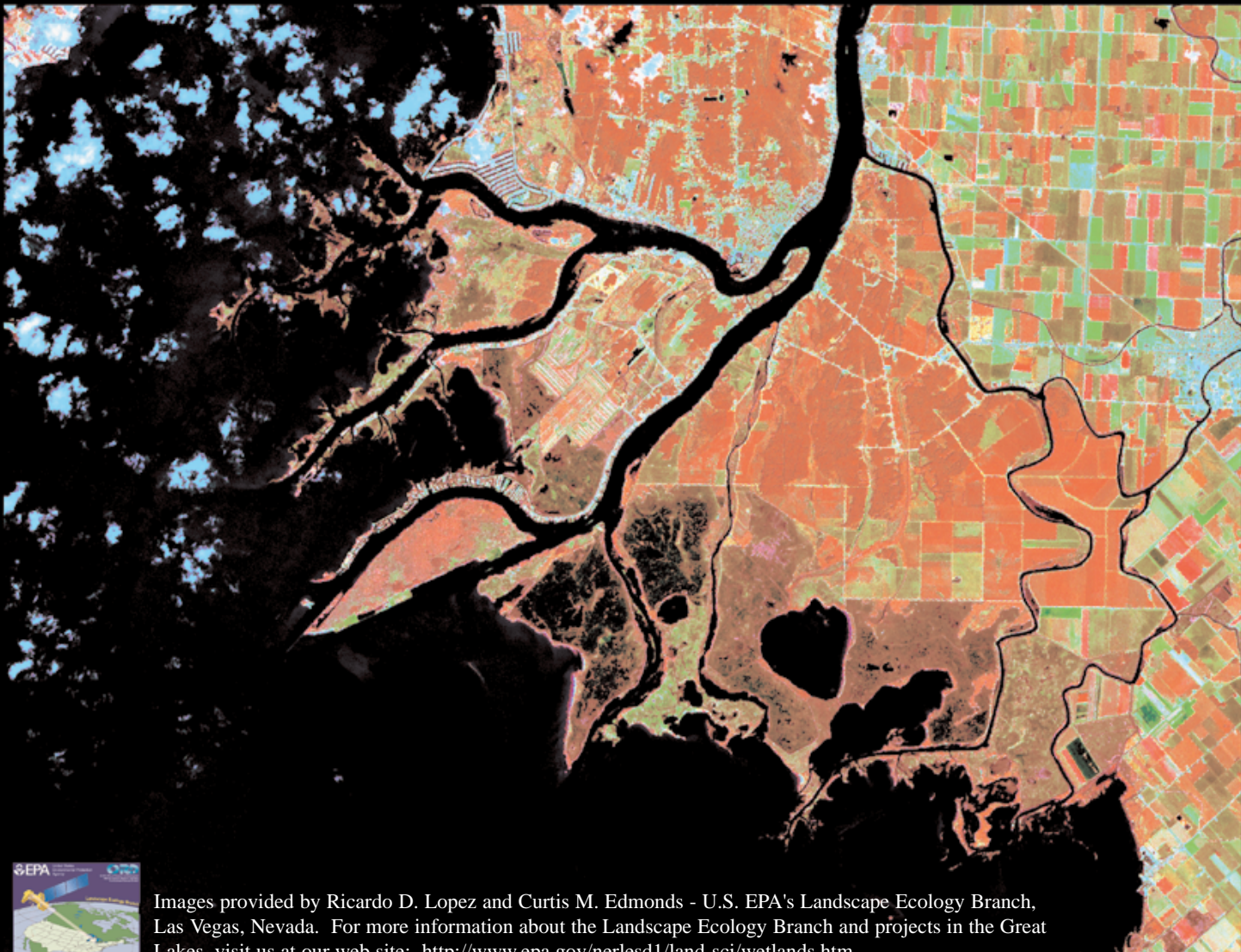


# The St. Clair River Delta

False-color infra-red Landsat ETM+  
Satellite Images (August 21, 2001)

Image to the right:  
R, G, B band combination = 4, 3, 2  
Scale = 1:117,000  
Nominal spatial resolution = 30 meters

Image below:  
R, G, B band combination = 4, 7, 1  
Scale = 1:52,000  
Nominal spatial resolution = 15 meters



Images provided by Ricardo D. Lopez and Curtis M. Edmonds - U.S. EPA's Landscape Ecology Branch, Las Vegas, Nevada. For more information about the Landscape Ecology Branch and projects in the Great Lakes, visit us at our web site: <http://www.epa.gov/nerlesd1/land-sci/wetlands.htm>.

