

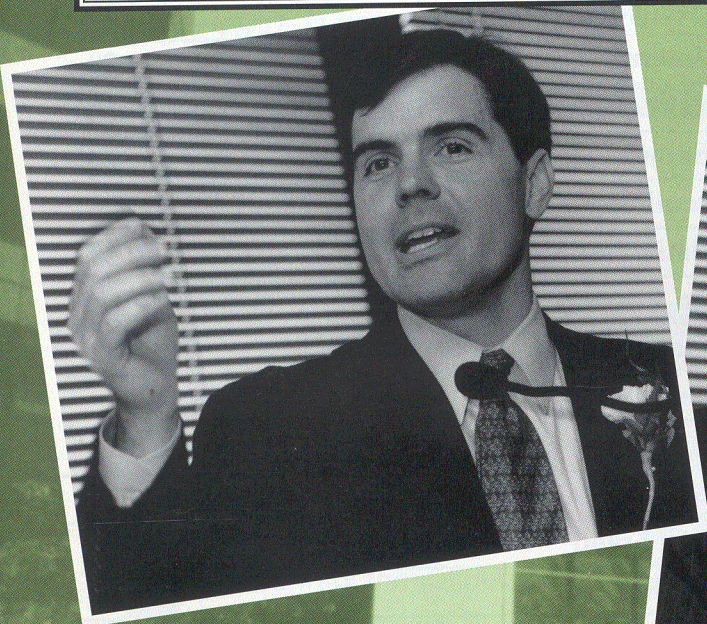
O A S I S

Social Security Administration Winter 2000

OATH OF OFFICE CEREMONY FOR NEW APPOINTEES

“Today is not only a special ceremony for this agency,” said Commissioner Apfel, “but it is a day that Bill Halter and Jim Huse will remember for the rest of their lives. It is a special day that marks the end of the confirmation journey and the beginning of the journey that will give them both awesome responsibilities. ...”

Left to right: Bill Halter, Jim Huse, Bill & Jim with Commissioner Apfel



The Art Fountain, shown at the Arcade, Glendale, California symbolizes the diverse origin of our ancestry. See “Speaking The Language” on Page 21.

SEE HOW SMART YOU ARE

Page 12

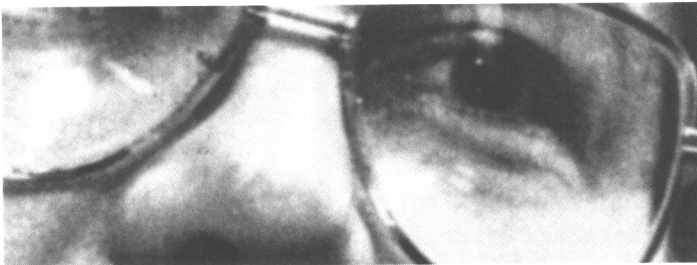
FOCUS ON FRAUD

Page 10

HISTORY QUIZ

EMPLOYEES THROUGHOUT SSA ARE MAKING PLANS TO CELEBRATE THE 65TH ANNIVERSARY OF THE SOCIAL SECURITY ACT IN AUGUST. HOW MUCH DO YOU REMEMBER ABOUT OUR HISTORY? TEST YOUR KNOWLEDGE WITH THE FOLLOWING QUIZ.

The correct answers can be found on page 27.



1. Who was the youngest SSA Commissioner?

- A. Arthur Altmeyer
- B. Dorcas Hardy
- C. John Svahn
- D. John Tramburg

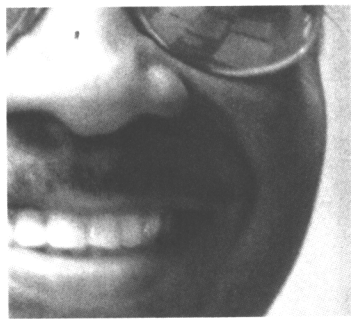
2. Who served as Acting Commissioner for the shortest period of time?

- A. William Mitchell
- B. Don Wortman
- C. Herbert Doggette
- D. Lawrence Thompson



3. When was flextime first introduced in SSA?

- A. 1974
- B. 1975
- C. 1978
- D. 1990



4. Who is the only person to serve as both Acting Commissioner and Commissioner?

- A. William Mitchell
- B. Martha McSteen
- C. Herbert Doggette
- D. Lawrence Thompson



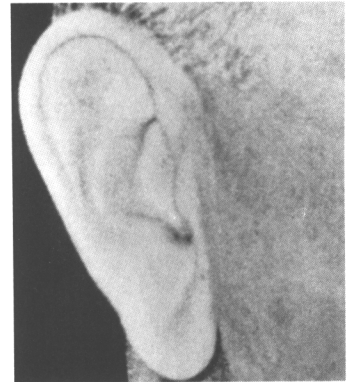
5. SSA has been located in Baltimore since it had to move out of Washington, D.C., during World War II. What other city was considered before Baltimore was selected?

- A. New York
- B. Chicago
- C. Philadelphia
- D. New Orleans



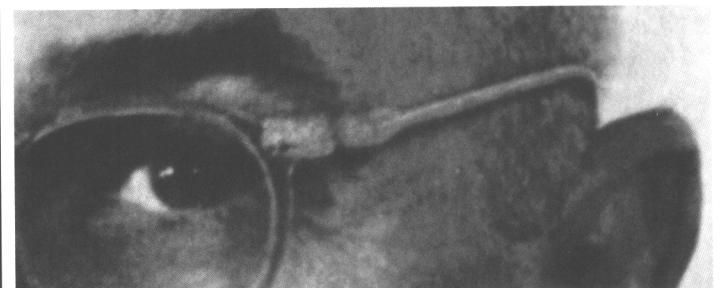
6. What famous American Revolutionary period figure proposed a plan for old-age security?

- A. George Washington
- B. Thomas Paine
- C. Benjamin Franklin
- D. Thomas Jefferson



7. Who is the only U.S. President to visit SSA headquarters?

- A. Harry Truman
- B. Lyndon Johnson
- C. Richard Nixon
- D. Gerald Ford



8. Who was President Lyndon Johnson referring to when he called him "the Grand-daddy of Medicare?"

- A. Franklin Roosevelt
- B. Arthur Altmeyer
- C. Harry Truman
- D. Edwin Witte

9. Who received the first Social Security card?

- A. Ida Fuller
- B. John Sweeney, Jr.
- C. Grace Owen
- D. Ernest Ackerman



10. The first SSA field office opened in Austin, Texas, on October 14, 1936; where did the second office open?

- A. Baltimore, Md.
- B. Chicago, Ill.
- C. Atlanta, Ga.
- D. Juneau, Alaska



HISTORY QUIZ (THE ANSWERS)



1. C. John Svahn was 37 years old at the time of his swearing-in ceremony in May 1981.



2. C. Herbert Doggette served a term as Acting Commissioner for two days, Jan. 1 and 2, 1980. He also served a second, longer tenure as Acting Commissioner from Jan. 20, 1981, to May 5, 1981.

3. A. On April 1, 1974, the Bureau of Data Processing began a six-month experiment using flexible work hours. The experiment was successful and "flexitime" tests were extended to other headquarters components in the ensuing years so that by 1978 flexitime was generally available throughout headquarters and the program service centers. Due to the constraints of direct public contact, flexitime did not come to field offices until 1990.

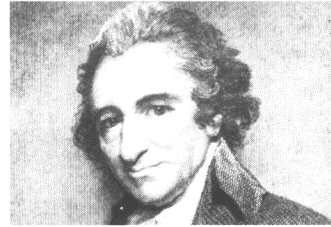
4. A. Mr. Mitchell became Acting Commissioner in April 1953 following the retirement of SSA's first Commissioner, Arthur Altmeyer. He served in



this position until November of that year. Almost six years later, he became SSA's fourth permanent Commissioner in February 1959, serving until his retirement in April 1962.

5. B. The Social Security Board established its Division of Accounting Operations in Baltimore's Candler Building in 1936, but kept its headquarters in Washington until 1942. In early 1942, the Social Security Board was seriously considering relocating its headquarters and its existing Baltimore operations to Chicago. A potential site had been identified and technicians had surveyed the facility for its suitability. However, it was finally decided that the move would be too massive and disruptive, so the Board's headquarters were moved to Baltimore's Equitable Building in

June 1942, and SSA's headquarters has remained in Baltimore ever since.



6. B. Thomas Paine proposed a pension plan that would give every person upon reaching their 50th birthday 10 pounds sterling per year, so that they could, as he put it, "enable them to live in old age without wretchedness, and go decently out of the world."

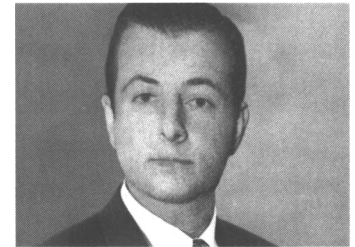


7. B. On Oct. 12, 1966, President Johnson attended SSA's 15th Annual Awards Ceremony, which was held outdoors in order to accommodate the nearly 20,000 people who assembled to witness the ceremony and listen to the President.

8. C. This accolade was bestowed on Harry Truman during the signing of the Medicare Bill



on July 30, 1965, in recognition of the national health care proposal he sent to Congress in 1945.



9. B. John Sweeney, of New Rochelle, N.Y., was issued the first Social Security card, although he did not receive the lowest Social Security number. This distinction went to New Hampshire resident Grace D. Owen, who received the SSN 001-01-0001.

10. D. The Juneau, Alaska, office opened on Oct. 27, 1936, followed by Honolulu, Hawaii, on Nov. 1, 1936. Throughout November and December, numerous field offices were opened on the same day, so that by the end of 1936, a total of 74 offices had opened for business.

