

Oasis

AUGUST 1994

Public Service Recognition Week



We're 59!

Take quiz to find out how much you know about SSA history

You may be aware that the Social Security Act was signed 59 years ago this month. But how much do you know about what's happened since then? Answer the following questions and find out.

1 Who received the first monthly Social Security benefit check?

- a. Charlie Smith
- b. Ida Fuller
- c. Mary Pickford
- d. Larry Lewis

2 Who was the first Commissioner for Social Security?

- a. Wilbur Mills
- b. Arthur Altmeyer
- c. Charles Schottland
- d. John Tramburg

3 Which country first proposed legislation to create a social security program?

- a. Great Britain
- b. United States
- c. Germany
- d. USSR



4 Where did the first district office open?

- a. Austin, Texas
- b. Kalamazoo, Mich.
- c. Washington, D.C.
- d. Sacramento, Calif.

5 When was the original Social Security Act passed?

- a. August 14, 1935
- b. January 3, 1940
- c. August 1, 1937
- d. July 1, 1936

6 Who served longest as Commissioner of Social Security?

- a. Arthur Hess
- b. Robert Ball
- c. Arthur Altmeyer
- d. Victor Christgau

7 When was the OASIS first published?

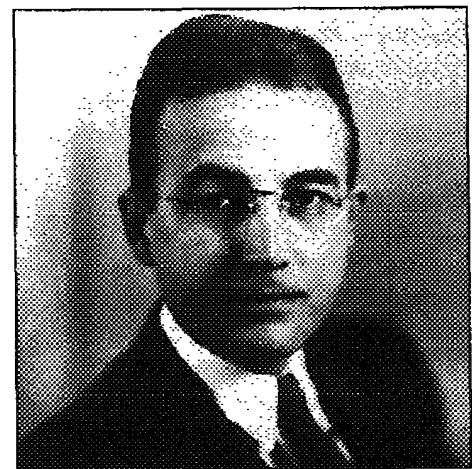
- a. 1936
- b. 1940
- c. 1955
- d. 1960

8 When did the first branch offices open?

- a. 1940
- b. 1951
- c. 1959
- d. 1963

9 The first field offices had only three types of jobs. What were they?

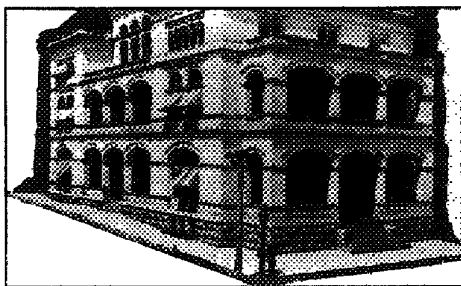
- a. Manager, field assistant, claim clerk
- b. Director, claims rep, clerk-typist
- c. Office chief, adjudicator-reviewer; secretary



- 10.** Which state was the first to open a DDS?
- Maryland
 - California
 - Pennsylvania
 - Ohio

- 11.** Who was the first Vice President to visit SSA headquarters?
- Hubert Humphrey
 - Nelson Rockefeller
 - Walter Mondale
 - Al Gore

- 12.** What position did the area director replace?
- Social Security Representative, Field Operations
 - Assistant Regional Representative, District Office Operations
 - Regional Representative, Health Insurance



- 13.** What were the teleservice centers formerly called?
- Dial-A-Stat
 - Metropolitan Answering Service
 - Information Please
 - Social Security Answering System

- 14.** Which agency handled employer registration and account number applications immediately after Social Security was established?
- Federal Security Agency
 - Office of Vocational Rehabilitation
 - U.S. Post Office Department

- 15.** When did the Supreme Court declare the Social Security Act constitutional?
- 1937
 - 1934
 - 1942
 - 1950

- 16.** Prior to 1978, how often did state and local agencies have to report earnings for their employees covered by Social Security?
- Twice a year
 - Quarterly
 - Annually
 - None of the above

- 17.** What were program service centers originally called?
- Payment Centers
 - Teleservice Centers
 - Branch Offices
 - Area Offices

- 18.** What was the Social Security Administration originally known as?
- Baltimore Payment Center
 - Health, Education and Welfare Department
 - Social Security Board
 - Social Security Advisory Council

- 19.** What President signed the Social Security Act?
- Franklin D. Roosevelt
 - Harry Truman
 - Dwight Eisenhower
 - Herbert Hoover

- 20.** What were the working hours for Social Security in 1941?
- 7:30 a.m. to 4:30 p.m.
 - 8:30 a.m. to 5 p.m.
 - 3 a.m. to 5 p.m. daily and 8 a.m. to noon Saturdays
 - 9:15 a.m. to 4:45 p.m. daily and 9:15 to 1:15 Saturdays

The answers are . . .

- b**
- b**
- c**, in 1881
- a**, on October 14, 1936
- a**
- b**, from 1961-1973. Arthur Altmeier was Chairman of the Social Security Board from 1936-1946 and Commissioner for social Security from 1946-1953.
- c**, in its magazine format, *OASIS* was first published in January 1955. Its forerunner, *the OASIS News*, began as a bi-weekly four- to 12-page mimeographed newsletter and was first published on March 25, 1941.
- a**
- a**
- d**
- d**
- b**
- b**
- c**
- a**, May 24, 1937
- b**
- d**
- c**
- a**
- d**

How did you do?

If you guessed correctly:
 18-20 - SSA's historian might want to interview you.
 15-17 - You've probably had a long career with SSA.
 10-16 - Not bad.
 Less than 10 - Not good.