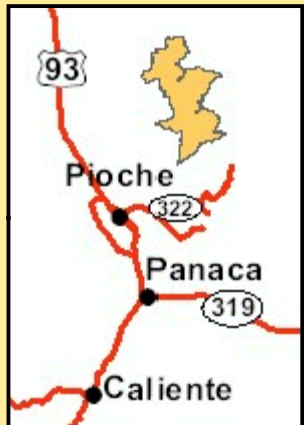
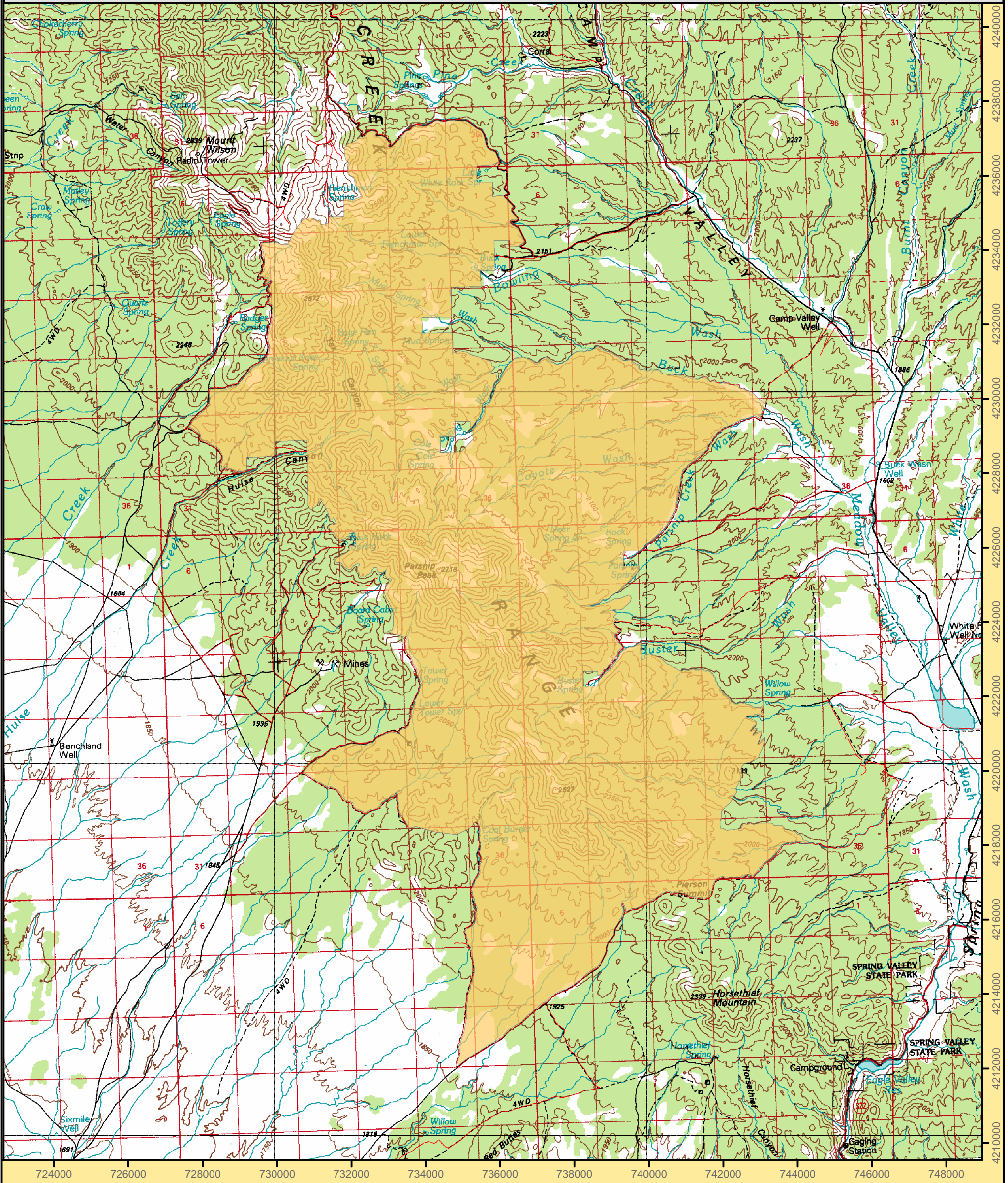


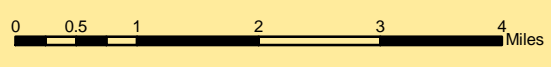
Parsnip Peak Wilderness Area



Wilson Creek Range 1:100,000		
Schoolmarm Basin 1:2400	Trail Canyon 1:2400	Miller Canyon 1:2400
Mount Wilson 1:2400	Parsnip Peak 1:2400	Buck Wash Well 1:2400
Mount Wilson SW 1:2400	Pierson Summit 1:2400	Eagle Valley Reservoir 1:2400

Legend

Wilderness Boundary



1:100,000

Projection: Nad 83 Zone 11 North

Ely BLM Field Office
December 2004
For more information call 775-289-1800

U. S. Department of the Interior
Bureau of Land Management

"NO WARRANTY IS MADE BY THE BUREAU OF LAND MANAGEMENT AS TO THE ACCURACY, RELIABILITY, OR COMPLETENESS OF THESE DATA FOR INDIVIDUAL USE OR AGGREGATE USE WITH OTHER DATA."



FACT Sheet

BUREAU OF LAND MANAGEMENT

ELY FIELD OFFICE (Tel: 775-289-1800)
HC Box 33500, Ely, Nevada 89301-9408

Parsnip Peak Wilderness

43,693 acres

Elevation 6,160 - 8,916 ft

Location

The Parsnip Peak Wilderness is located in northeastern Lincoln County, approximately 25 miles north of Pioche, Nevada, within the Wilson Creek Mountain Range.



Getting There

Access to this Wilderness area is 14 miles north of Pioche, Nevada on BLM road 4037 off federal highway 93.

Area Description

Part of the Wilson Creek Mountain Range, Parsnip Peak Wilderness provides an outstanding array of recreation and solitude. The area is pristine, with riparian areas, wildlife and forest.

This area is good for hiking and camping, backpacking, horseback riding, rock climbing, hunting and trapping, plus the study of archaeology and geology. Abundant prehistoric sites exist here. The Mount Wilson Archaeological District was delineated in the north end of the Wilderness and is eligible for nomination for

the National Register of Historic Places. Pre-historic sites include campsites, rock rings, rock shelters and rock art. A unique feature is the "Indian Playground", an elaborate maze-like rock alignment which can be clearly seen from the air.

Forest cover varies with elevation and aspect, with aspen groves predominating on the north slopes and thickets of mountain mahogany blanketing the south. Deer, elk and other ungulates browse these stands. Bald eagles like the pockets of fir which survive in craggy niches in the higher elevations. Native grasses flourish throughout the wilderness.

Additional Information

Signs indicating "Wilderness" and "Closed Road" or "Closed Route" are placed at various intervals. Vehicles can be parked outside the wilderness boundary; however, the boundary is set back 100 feet on roads.

Mechanized and motorized vehicles are **NOT PERMITTED** in a wilderness area.

Hunting, fishing, and non-commercial trapping are allowed under state and local laws. Pets are allowed, but please keep your pets under control at all times. Horses are permitted, however you may need to carry feed. Removal, disturbance, or attempting to remove archaeological materials is a felony. Selling, receiving, purchasing, transporting, exchanging or offering to do so is prohibited by law.

Camping is permitted, limited to 14 days. After 14 days campers must relocate at least 25 miles from previous site (*interim policy, until wilderness planning is complete*). Gathering wood for campfires, when permitted, is limited to dead and down material. Live vegetation cannot be cut.

Please help preserve Nevada's fragile environments, park your vehicle or set up camp in previously used sites, minimize impacts by practicing Leave No Trace ethics.

Contact Ely Bureau of Land Management Field Office for current weather, road conditions, and hazards.

Maps

USGS 7.5 Quadrangle Maps: Trail Canyon, Mount Wilson, Parsnip Peak, Buck Wash, Pierson Summit, Eagle Valley

Contact Info:

Ely BLM Field Office

Phone: 775-289-1800

www.nv.blm.gov/Ely

