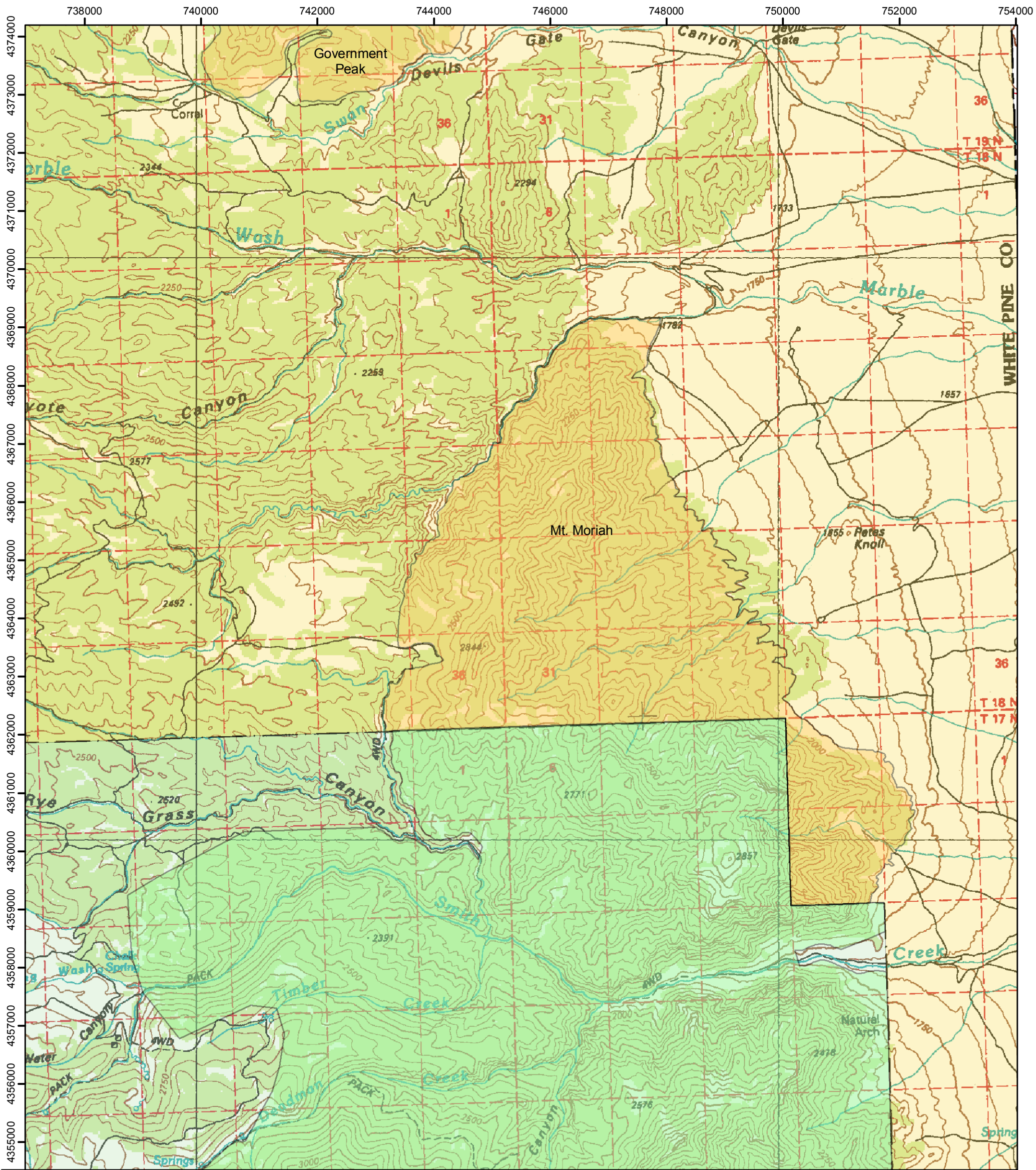
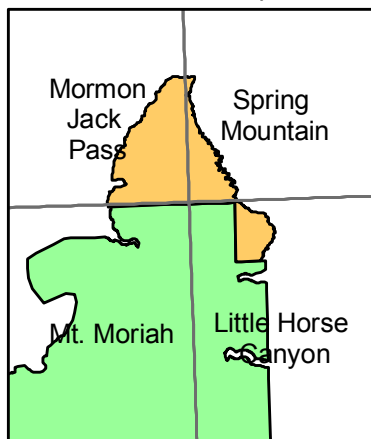




# Mt. Moriah Wilderness Area



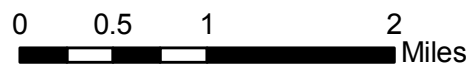
1:24,000 Maps



1:100,000 Maps:  
Ely

### Legend

- BLM Wilderness Area
- USFS Wilderness Area

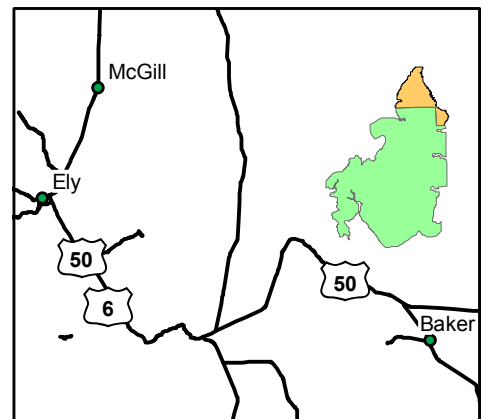


1:65,000

Ely BLM Field Office  
For more information call:  
(775) 289-1800



No Warranty is made by the Bureau of Land Management as to the accuracy, reliability, or completeness of these data for individual use or aggregate use with other data.







# FACT Sheet

BUREAU OF LAND MANAGEMENT

ELY FIELD OFFICE (Tel: 775-289-1800)  
HC Box 33500, Ely, Nevada 89301-9408

## Mt. Moriah Wilderness Area

8,691 acres

Elevation 6,000 – 9,331 ft

### Location

The Mt. Moriah Wilderness Area is adjacent to the USFS Mt. Moriah Wilderness Area (79,996 acres). It is located in the Snake Creek Range in eastern Nevada within White Pine County, approximately 30 miles northeast of Ely, Nevada.



### Getting There

Access to the Mt. Moriah Wilderness Area from Ely is via federal Highway 50 east bound, approximately 50 miles. Cross over the border into Utah, and after about a mile turn north toward the small community of Gandy. Once to Gandy (about 27 miles from Highway 50), turn westbound onto BLM Road 4032. In about 7 miles you will drop down into Marble Canyon Wash. At the intersection in the wash turn left; this two-track road will take you to the northeastern corner of the Wilderness Area.

### Area Description

The Mt. Moriah Wilderness Area lies in the Snake Creek Range. The Wilderness Area is made up of a complex array of canyons, jumbled peaks, and drainages, dotted with juniper, pinyon pine, and mountain mahogany. The highest point, Thunder Mountain, 9,331 feet, is located on along ridge that crosses the Wilderness Area's center. This high ridge supports douglas fir, white fir, bristlecone pine and limber pine. The canyon cliffs are pocketed with rock arches, shelter caves, expansive ledges and huge natural amphitheaters. These cliffs are excellent locations to spot Rocky Mountain bighorn sheep and a great variety of raptor species.

### Additional Information

Signs indicating "Wilderness" and "Closed Road" or "Closed Route" are placed at various intervals. Vehicles can be parked outside the wilderness boundary.

Mechanized and motorized vehicles are **NOT PERMITTED** in a wilderness area.

Hunting, fishing, and trapping are allowed under state and local laws. Pets are allowed, but please keep your pets under control at all times. Horses are permitted, however you may need to carry feed. Removal, disturbance, or attempting to remove archaeological materials is a felony. Selling, receiving, purchasing, transporting, exchanging or offering to do so is prohibited by law.

Camping is permitted, limited to 14 days. After 14 days campers must relocate at least 25 miles from previous site (*interim policy, until wilderness planning is complete*). Gathering wood for campfires, when permitted, is limited to dead and down material. Live vegetation cannot be cut.

Please help preserve Nevada's fragile environments, park your vehicle or set up camp in previously used sites, minimize impacts by practicing Leave No Trace ethics.

Contact Ely Bureau of Land Management Field Office for current weather, road conditions, and hazards.

### Maps

USGS 7.5 Quadrangle Maps:

Mormon Jack Pass

Spring Mountain

Little Horse Canyon

Mt. Moriah (USFS Wilderness Area)

BLM 1:100,000 Map:

Ely

### Contact Info:

Ely BLM Field Office

Phone: 775-289-1800

[www.nv.blm.gov/Ely](http://www.nv.blm.gov/Ely)

