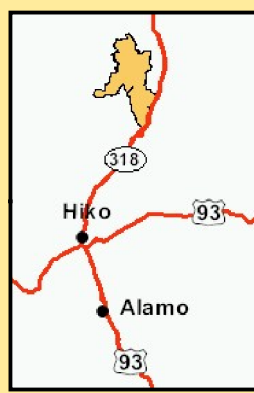
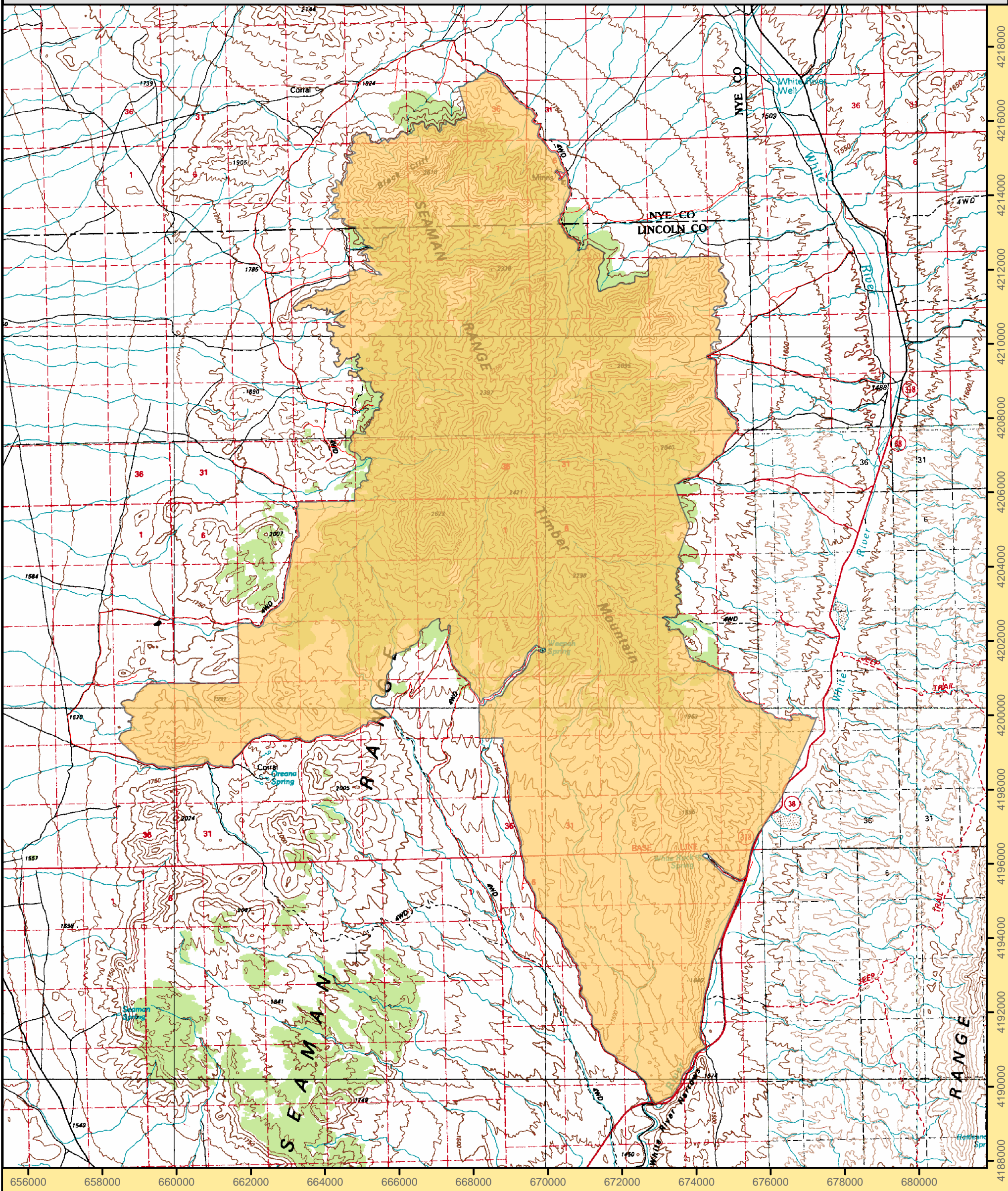


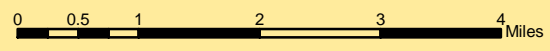
Weepah Spring Wilderness Area



Quinn Canyon 1:100,000	Wilson Creek Range 1:100,000
Timber Mountain Pass East 1:2400	Silver King Mountain SW 1:2400
Timpanute Range 1:100,000	Caliente 1:1000,000
Oreana Spring 1:2400	Deadman Spring 1:2400
Seaman Wash 1:2400	White River Narrows 1:2400
	Wheatgrass Spring 1:2400

Legend

Wilderness Boundary



1:100,000

Projection: Nad 83 Zone 11 North

Ely BLM Field Office
December 2004
For more information call 775-289-1800

"NO WARRANTY IS MADE BY THE BUREAU OF LAND MANAGEMENT AS TO THE ACCURACY, RELIABILITY, OR COMPLETENESS OF THESE DATA FOR INDIVIDUAL USE OR AGGREGATE USE WITH OTHER DATA."



FACT Sheet

BUREAU OF LAND MANAGEMENT

ELY FIELD OFFICE (Tel: 775-289-1800)
HC Box 33500, Ely, Nevada 89301-9408

Weepah Spring Wilderness

51,480 acres

Elevation 4,600 - 8,605 ft

Location

The Weepah Spring Wilderness is located in the Seaman Range of northwestern Lincoln County along the Nye County border. It is approximately 90 miles south of Ely and 35 miles north of Alamo.



Getting There

Access to this Wilderness area is north on state highway 318 from Hiko, Nevada approximately 25 miles.

Area Description

The Weepah Spring Wilderness is an excellent unspoiled example of mountain ranges representative of the Great Basin. It lacks a single defined ridgeline. The complex geology of the area forms a confused landscape: isolated peaks, maze-like canyons, walls of fossil bearing rocks, natural arches and odd volcanic hoodoos. Add to this the oddity of the largest stand of ponderosa pine in eastern Nevada compounded with 4,000 year old rock art.

A rugged land, the Seaman Range and Timber Mountain consist of individual peaks and a myriad of canyons, crating a maze-like terrain. Hiking, camping, backpacking, hunting and horseback riding are good in this area of forest and eroded volcanic cliffs. Although most stands of ponderosa in eastern Nevada are relict stands, this one is unique in that active regeneration is obvious, where young saplings grow next to trees over 3 feet in diameter.

The White River Narrows Archaeological District, listed on the National Register of Historic Places, represents one of the largest and most well-known petroglyph concentrations in the state. Other prehistoric sites include shelter caves, hunting blinds and camp sites.

Additional Information

Signs indicating "Wilderness" and "Closed Road" or "Closed Route" are placed at various intervals. Vehicles can be parked outside the wilderness boundary; however, the boundary is set back 100 feet on roads.

Mechanized and motorized vehicles are **NOT PERMITTED** in a wilderness area.

Hunting, fishing, and non-commercial trapping are allowed under state and local laws. Pets are allowed, but please keep your pets under control at all times. Horses are permitted, however you may need to carry feed. Removal, disturbance, or attempting to remove archaeological materials is a felony. Selling, receiving, purchasing, transporting, exchanging or offering to do so is prohibited by law.

Camping is permitted, limited to 14 days. After 14 days campers must relocate at least 25 miles from previous site (*interim policy, until wilderness planning is complete*). Gathering wood for campfires, when permitted, is limited to dead and down material. Live vegetation cannot be cut.

Please help preserve Nevada's fragile environments, park your vehicle or set up camp in previously used sites, minimize impacts by practicing Leave No Trace ethics.

Contact Ely Bureau of Land Management Field Office for current weather, road conditions, and hazards.

Maps

USGS 7.5 Quadrangle Maps: Timber Mountain Pass, Timber Mountain Pass East, Oreana Spring, Weepah Spring

Contact Info:

Ely BLM Field Office

Phone: 775-289-1800

www.nv.blm.gov/Ely

