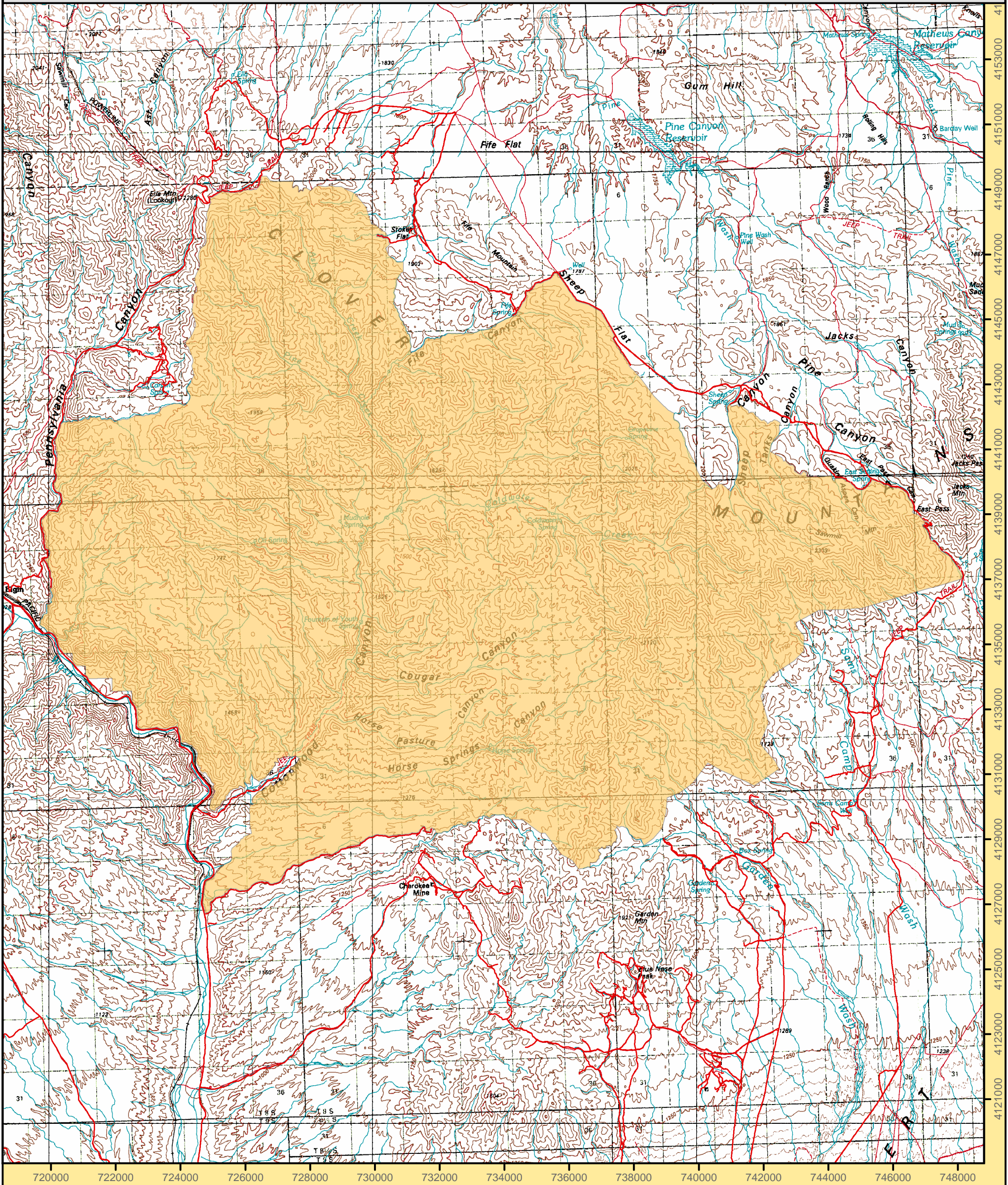





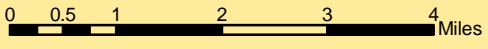
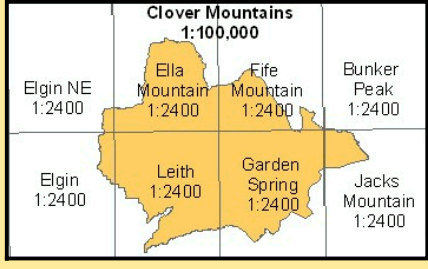
# Clover Mountains Wilderness Area



**Legend**


 Wilderness Boundary

Ely BLM Field Office  
December 2004  
For more information call 775-289-1800



1:115,000

Projection: Nad 83 Zone 11 North



"NO WARRANTY IS MADE BY THE BUREAU OF LAND MANAGEMENT AS TO THE ACCURACY, RELIABILITY, OR COMPLETENESS OF THESE DATA FOR INDIVIDUAL USE OR AGGREGATE USE WITH OTHER DATA."





# FACT Sheet

BUREAU OF LAND MANAGEMENT

ELY FIELD OFFICE (Tel: 775-289-1800)  
HC Box 33500, Ely, Nevada 89301-9408

## Clover Mountains Wilderness

85,748 acres

Elevation 3,000 – 7,790 ft

### Location

The Clover Mountains Wilderness is located in southern Lincoln County approximately twelve miles south of Caliente, Nevada in the western Clover Mountains.

### Getting There

Access to this wilderness area from Caliente, Nevada is state highway 317 which will take you to the western boundary of the Clover Mountains Wilderness.

### Area Description

Millions of years ago, this area was a major volcanic center, spewing lava flows over the landscape. Now this ancient caldera, cut into twisting shapes and inspiring colors by millions of years of erosion, is a rewarding destination for a weekend escape. Exceptional opportunities abound for solitude and adventure in this land of rolling hills, rugged peaks, and jagged rock outcrops of rhyolite in natural hues of pink, yellow, red, orange and brown as well as twisting canyons and perennial waters. The volcanic peaks of the Clover Mountains Wilderness rise over 7,000 feet above sea level. Narrow twisting canyons, cliffs, rock outcrops, peaks, ridges and saddles create a scenic land of surprise. High in the mountains live old-growth stands of ponderosa pine and quaking aspen both of which are uncommon in this part of Nevada. Ash, cottonwood, quaking aspen, and other riparian vegetation thrive along Cottonwood Creek, one of the longest pristine year-round streams in Southern Nevada. The Thule Desert encompasses the lowest elevations in the southern portion of the wilderness area with vegetation of sagebrush, joshua trees, and yucca.

Mule deer, desert bighorn sheep, mountain lion, bobcat, badger, peregrine falcon, prairie falcon and golden eagle have been seen in the area. The lower regions of the area provide important habitat for kit fox and numerous species of reptiles. Sensitive species likely to be found in the wilderness area include the Pallid bat, California myotis, and banded Gila monster.

Hiking, camping, climbing and rock scrambling, as well as horseback riding are outstanding due to the variety of scenic topography, which creates numerous routes, trip lengths and challenges. Hunting for mule deer is good. The Clover Mountains are particularly inviting for hikers, hunters and horse packers. Very few impacts from humans are present, offering a rare opportunity to see undisturbed nature.

Cultural resources within the Clover Mountains Wilderness include petroglyphs, pictographs, and a historic cabin in Cottonwood Creek. Historical sites in the area include Kiernan Ranch and Post Office located on the boundary near the mouth of the Cottonwood Canyon, along with Bradshaw Ranch, approximately 3 miles east of Elgin.

### Additional Information

Signs indicating “Wilderness” and “Closed Road” or “Closed Route” are placed at various intervals. Vehicles can be parked outside the wilderness boundary; however, the boundary is set back 100 feet on roads.

Mechanized and motorized vehicles are **NOT PERMITTED** in a wilderness area.

Hunting, fishing, and non-commercial trapping are allowed under state and local laws. Pets are allowed, but please keep your pets under control at all times. Horses are permitted, however you may need to carry feed. Removal, disturbance, or attempting to remove archaeological materials is a felony. Selling, receiving, purchasing, transporting, exchanging or offering to do so is prohibited by law.

Camping is permitted, limited to 14 days. After 14 days campers must relocate at least 25 miles from previous site (*interim policy, until wilderness planning is complete*). Gathering wood for campfires, when permitted, is limited to dead and down material. Live vegetation cannot be cut.

Please help preserve Nevada’s fragile environments, park your vehicle or set up camp in previously used sites, minimize impacts by practicing Leave No Trace ethics.

Contact Ely Bureau of Land Management Field Office for current weather, road conditions, and hazards.

### Maps

USGS 7.5 Quadrangle Maps: Elgin NE, Ella Mountain, Fife Mountain, Bunker Peak, Elgin, Leith, Garden Spring, Jacks Mountain

### Contact Info:

Ely BLM Field Office

Phone: 775-289-1800

[www.nv.blm.gov/Ely](http://www.nv.blm.gov/Ely)

