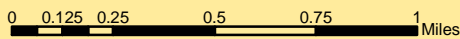
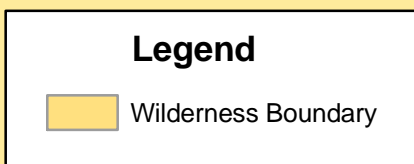
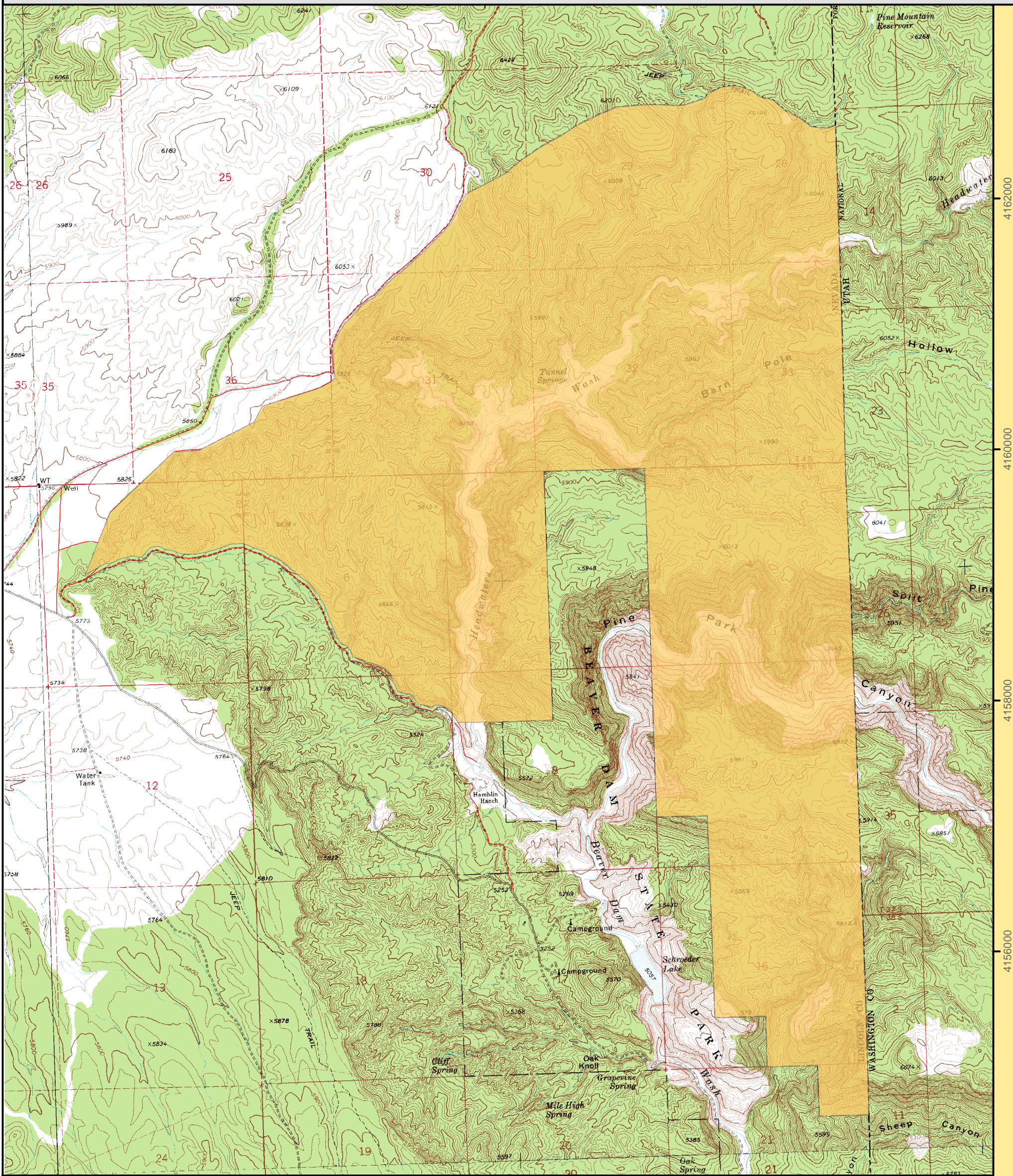


# Tunnel Spring Wilderness Area



1:30,000

Projection: Nad 83 Zone 11 North

Ely BLM Field Office  
December 2004  
For more information call 775-289-1800

U. S. Department of the Interior  
Bureau of Land Management

"NO WARRANTY IS MADE BY THE BUREAU OF LAND MANAGEMENT AS TO THE ACCURACY, RELIABILITY, OR COMPLETENESS OF THESE DATA FOR INDIVIDUAL USE OR AGGREGATE USE WITH OTHER DATA."





# FACT Sheet

BUREAU OF LAND MANAGEMENT

ELY FIELD OFFICE (Tel: 775-289-1800)  
HC Box 33500, Ely, Nevada 89301-9408

## Tunnel Spring Wilderness

5,371 acres

Elevation 5,000-6,700 ft

### Location

The Tunnel Spring Wilderness is located in northeastern Lincoln, County, Nevada and northwestern Washington County, Utah.

### Getting There

Access to this Wilderness area is 6 miles north of Caliente via the county road leading to Beaver Dam State Park.

### Area Description

Tunnel Springs Wilderness is a land of steep, mountainous canyons, long ridges and rough drainages located at the head of Beaver Dam Wash. Various kinds of volcanic rocks predominate. Vegetation is mostly pinyon-juniper and sagebrush. The climate is semi-arid, with cold winters and hot summers. Five to seven miles of streams support trout fisheries, unusual in BLM lands in this desert region. Rainbow trout live in the perennial waters of Beaver Dam Wash. Mountain Lions and a variety of raptors frequent the area. The birds include: ferruginous hawk, Swainson's hawk, southern spotted owl, long-billed curlew, mountain plover, western snowy plover, western yellow-billed cuckoo, white-faced biis, and Arizona Bell's vireo. Rodents include Merriam's kangaroo rat. Beaver Dam Creek is known to inhabit the Virgin River spinedance, speckled dace, and desert sucker.

Accessible from the Dixie National Forest Pine Park Campground, the area is too rugged for horseback riding, but good for hiking. Solitude is best among the tributaries and main canyons of the Pine Park-Split Pine Hollow, the tributaries and outcrops in the south rim of Pine Park Canyon, and the lower portion of Sheep Corral Canyon.

### Additional Information

Signs indicating "Wilderness" and "Closed Road" or "Closed Route" are placed at various intervals. Vehicles can be parked outside the wilderness boundary; however, the boundary is set back 100 feet on roads.

Mechanized and motorized vehicles are **NOT PERMITTED** in a wilderness area.

Hunting, fishing, and non-commercial trapping are allowed under state and local laws. Pets are allowed, but please keep your pets under control at all times. Horses are permitted, however you may need to carry feed. Removal, disturbance, or attempting to remove archaeological materials is a felony. Selling, receiving, purchasing, transporting, exchanging or offering to do so is prohibited by law.

Camping is permitted, limited to 14 days. After 14 days campers must relocate at least 25 miles from previous site (*interim policy, until wilderness planning is complete*). Gathering wood for campfires, when permitted, is limited to dead and down material. Live vegetation cannot be cut.

Please help preserve Nevada's fragile environments, park your vehicle or set up camp in previously used sites, minimize impacts by practicing Leave No Trace ethics.

Contact Ely Bureau of Land Management Field Office for current weather, road conditions, and hazards.

### Maps

USGS 7.5 Quadrangle Maps: Pine Park

### Contact Info:

Ely BLM Field Office

Phone: 775-289-1800

[www.nv.blm.gov/Ely](http://www.nv.blm.gov/Ely)

