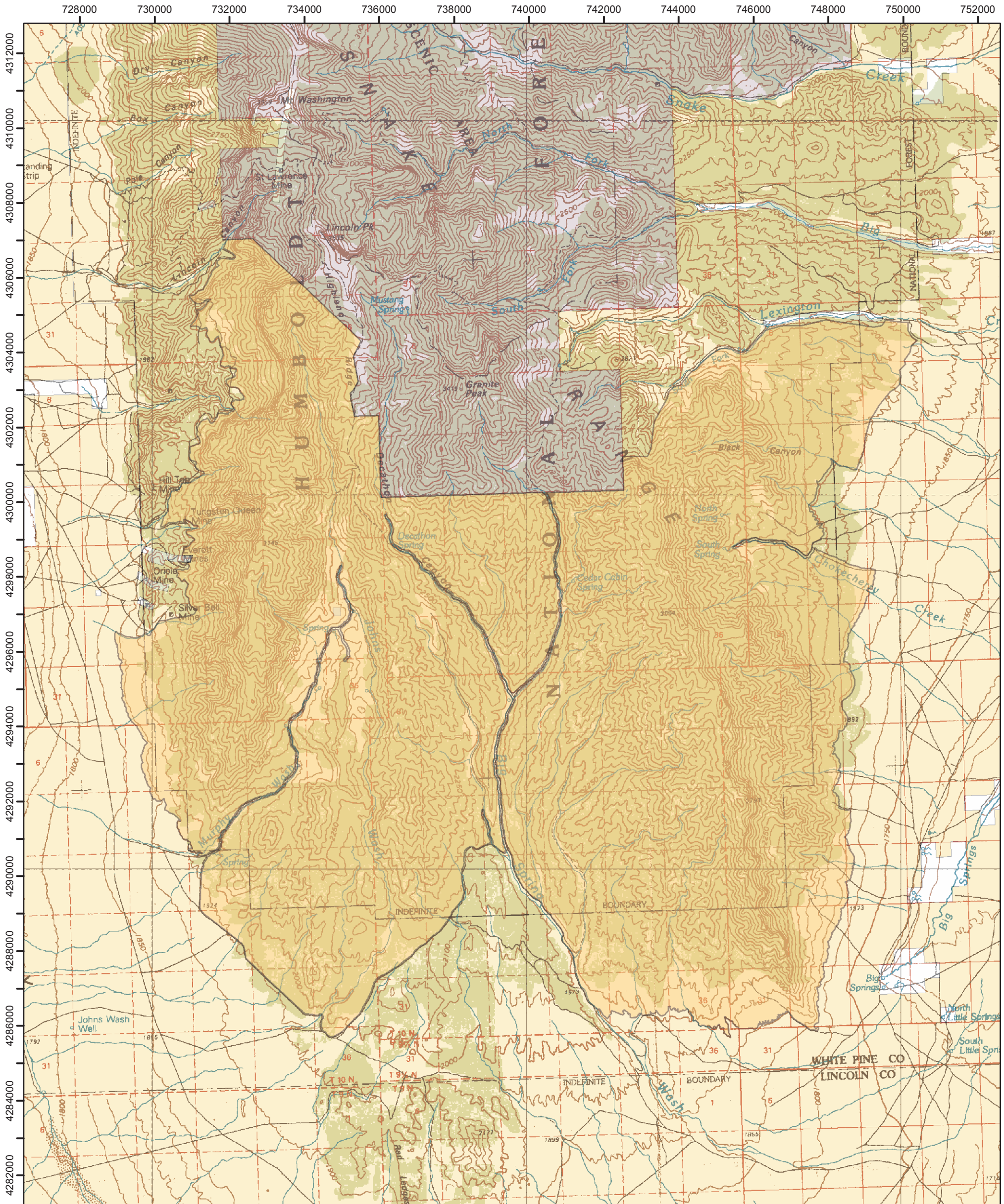
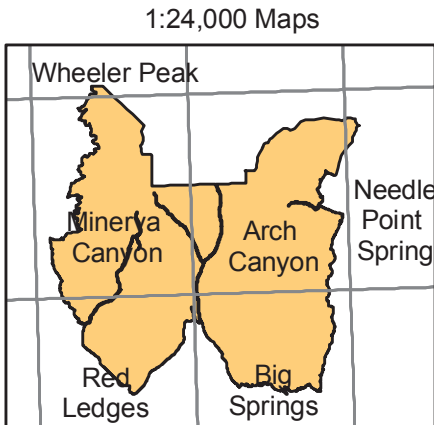
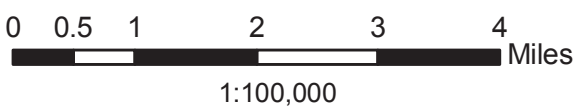




Highland Wilderness Area



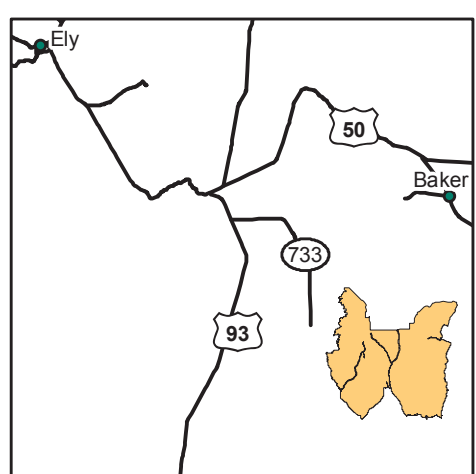
Legend
Wilderness Area



Ely BLM Field Office
For more information call:
(775) 289-1800



No Warranty is made by the Bureau of Land Management as to the accuracy, reliability, or completeness of these data for individual use or aggregate use with other data.





FACT Sheet

BUREAU OF LAND MANAGEMENT

ELY FIELD OFFICE (Tel: 775-289-1800)
HC Box 33500, Ely, Nevada 89301-9408

Highland Ridge Wilderness Area

68,622 acres

Elevation: 6,070- 10,825 ft

Location

The Highland Ridge Wilderness Area is located in southeastern White Pine County approximately 20 miles south of Baker, Nevada; immediately south of Great Basin National Park.

Getting There

Access to the eastern side of Highland Ridge Wilderness Area from Baker, Nevada is along state highway 487 to the southeast for 12 miles to USFS road 450. (This road will lead into Utah for several miles.) Turn right onto USFS 450. Continue along this road for approximately 5.5 miles. At this point you may turn left onto BLM road 4090 which heads south along the eastern side, or continue straight to access the northeastern boundary.

Area Description

The Highland Ridge Wilderness Area lies at the southern end of the Snake Range, adjacent to Great Basin National Park. The area encompasses varying terrain, from sagebrush covered foothills to steep ridges with sheer outcrops of rock. The steep, upland mountains are dotted with pinyon and juniper trees. Several riparian corridors stretch through the proposed area, lined with aspen and pine. The fairly dense vegetation and deep valleys provide good opportunities for solitude.

Recreational opportunities involve hiking, camping, hunting, horse-back riding and photography.



Additional Information

Signs indicating "Wilderness" and "Closed Road" or "Closed Route" are placed at various intervals. Vehicles can be parked outside the wilderness boundary.

Mechanized and motorized vehicles are **NOT PERMITTED** in a wilderness area.

Hunting, fishing, and trapping are allowed under state and local laws. Pets are allowed, but please keep your pets under control at all times. Horses are permitted, however you may need to carry feed.

Removal, disturbance, or attempting to remove archaeological materials is a felony. Selling, receiving, purchasing, transporting, exchanging or offering to do so is prohibited by law.

As on all Nevada BLM land, camping is permitted and limited to 14 days. After 14 days campers must relocate at least 25 miles from previous site (*interim policy, until wilderness planning is complete*). Gathering wood for campfires, when permitted, is limited to dead and down material. Live vegetation cannot be cut.

Please help preserve Nevada's fragile environments, park your vehicle or set up camp in previously used sites, minimize impacts by practicing Leave No Trace ethics.

Contact Ely Bureau of Land Management Field Office for current weather, road conditions, and hazards.

Maps

USGS 7.5 Quadrangle Maps:

Wheeler Peak

Minerva Canyon

Arch Canyon

Red Ledges

Big Springs

Needle Point Spring

USGS 1:100,000 Map:

Garrison

Contact Info:

Ely BLM Field Office

Phone: 775-289-1800

www.nv.blm.gov/Ely