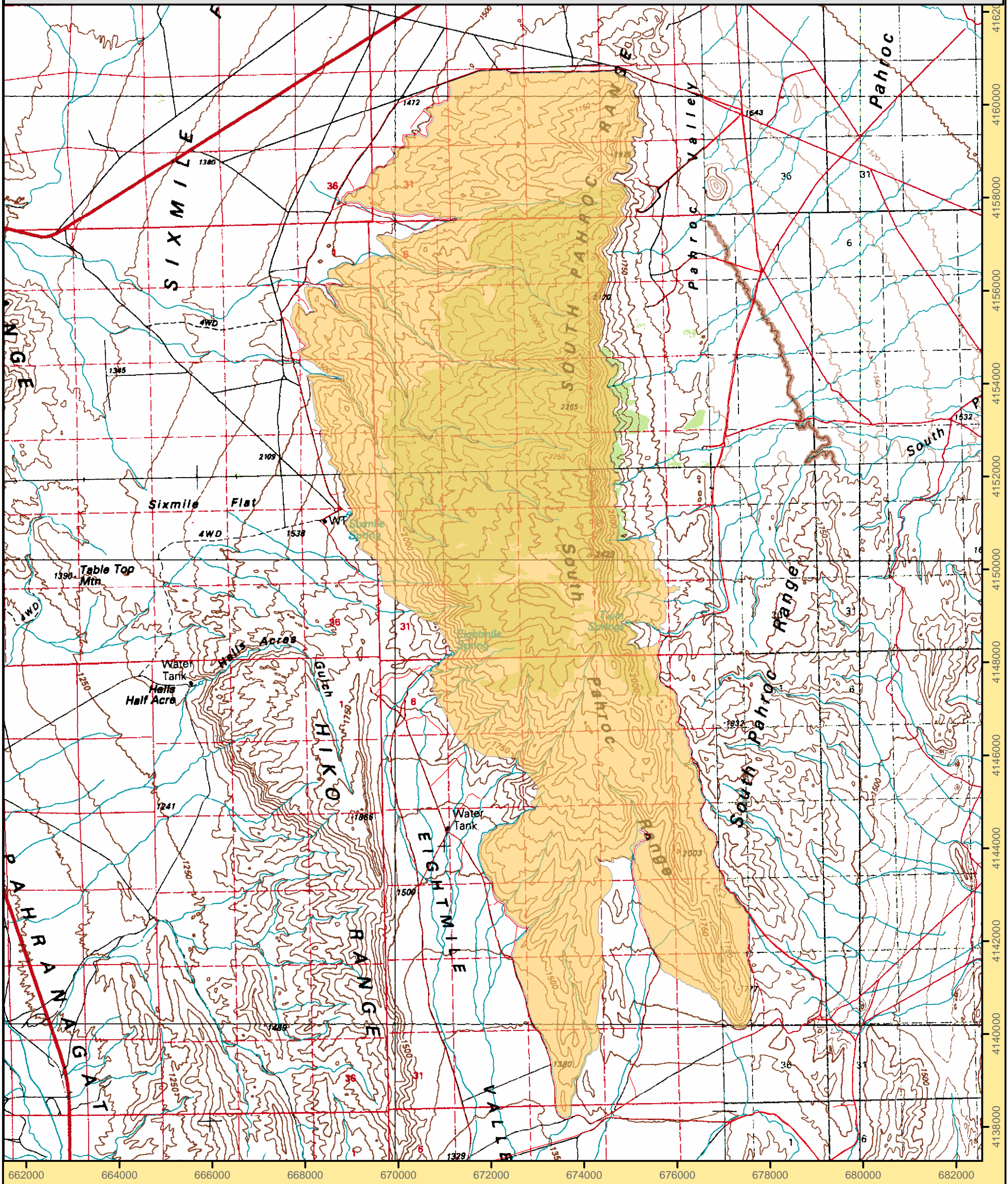




South Pahroc Range Wilderness Area



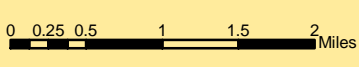
662000 664000 666000 668000 670000 672000 674000 676000 678000 680000 682000
4138000 4140000 4142000 4144000 4146000 4148000 4150000 4152000 4154000 4156000 4158000 4160000 4162000



Timpahute Range 1:100,000 Hiko SE 1:2400	Caliente 1:100,000 Pahroc Summit Pass 1:2400
Pahranagat Range 1:100,000 Alamo NE 1:2400	Clover Mountains 1:100,000 Delamar NW 1:2400
Alamo SE 1:2400	Delamar Lake 1:2400

Legend

Wilderness Boundary



1:80,000
Projection: Nad 83 Zone 11 North

Ely BLM Field Office
December 2004
For more information call 775-289-1800



"NO WARRANTY IS MADE BY THE BUREAU OF LAND MANAGEMENT AS TO THE ACCURACY, RELIABILITY, OR COMPLETENESS OF THESE DATA FOR INDIVIDUAL USE OR AGGREGATE USE WITH OTHER DATA."



FACT Sheet

BUREAU OF LAND MANAGEMENT

ELY FIELD OFFICE (Tel: 775-289-1800)
HC Box 33500, Ely, Nevada 89301-9408

South Pahroc Range Wilderness

25,800 acres

Elevation 5,000-7,950 ft

Location

The South Pahroc Range Wilderness is located in central Lincoln County approximately 30 miles west of Caliente, Nevada.



Getting There

Access to this Wilderness area from Caliente, Nevada is achieved via federal highway 93 28 miles west to an unnamed county road which takes you to the eastern border of the South Pahroc Range Wilderness.

Area Description

The South Pahroc Range is extremely rugged with deeply cut canyons, high ridges, large rounded boulders and heavily forested expanses. Much of the range is a solitary volcanic massif composed of varying colored layers of welded tuff that have weathered into unusual pockets, columns and stone faces. The lower elevations are gently rolling bajada with the tuff boulders more scattered. The mountain range creates an "island in the sky" effect. Moderately deep, steep-walled drainages cut

across the mountain from east to west. Differential weathering of welded tuff layers has created numerous pockets, holes, columns and the ubiquitous, large rounded boulders.

The rocky geologic features are interlaced with stands of pinyon-juniper, white fir and aspen, forming isolated glades that provide shady solitude. Mule deer, mountain lion, newly reintroduced bighorn sheep, golden eagles and prairie falcons can be found in the area. Hiking, backpacking, and camping is good here. Climbers and rock scramblers will find challenging routes that culminate in scenic overlooks atop gargantuan geologic features. Vantage points for hikers provide a view of huge empty desert valleys, interrupted by intervening chains of more distant mountains. Rock hounds may find opalescent feldspar crystals, obsidian, and "Apache tears".

Additional Information

Signs indicating "Wilderness" and "Closed Road" or "Closed Route" are placed at various intervals. Vehicles can be parked outside the wilderness boundary; however, the boundary is set back 100 feet on roads.

Mechanized and motorized vehicles are **NOT PERMITTED** in a wilderness area.

Hunting, fishing, and non-commercial trapping are allowed under state and local laws. Pets are allowed, but please keep your pets under control at all times. Horses are permitted, however you may need to carry feed. Removal, disturbance, or attempting to remove archaeological materials is a felony. Selling, receiving, purchasing, transporting, exchanging or offering to do so is prohibited by law.

Camping is permitted, limited to 14 days. After 14 days campers must relocate at least 25 miles from previous site (*interim policy, until wilderness planning is complete*). Gathering wood for campfires, when permitted, is limited to dead and down material. Live vegetation cannot be cut.

Please help preserve Nevada's fragile environments, park your vehicle or set up camp in previously used sites, minimize impacts by practicing Leave No Trace ethics.

Contact Ely Bureau of Land Management Field Office for current weather, road conditions, and hazards.

Maps

USGS 7.5 Quadrangle Maps: Hiko SE, Alamo NE, Delamar NW

Contact Info:

Ely BLM Field Office

Phone: 775-289-1800

www.nv.blm.gov/Ely