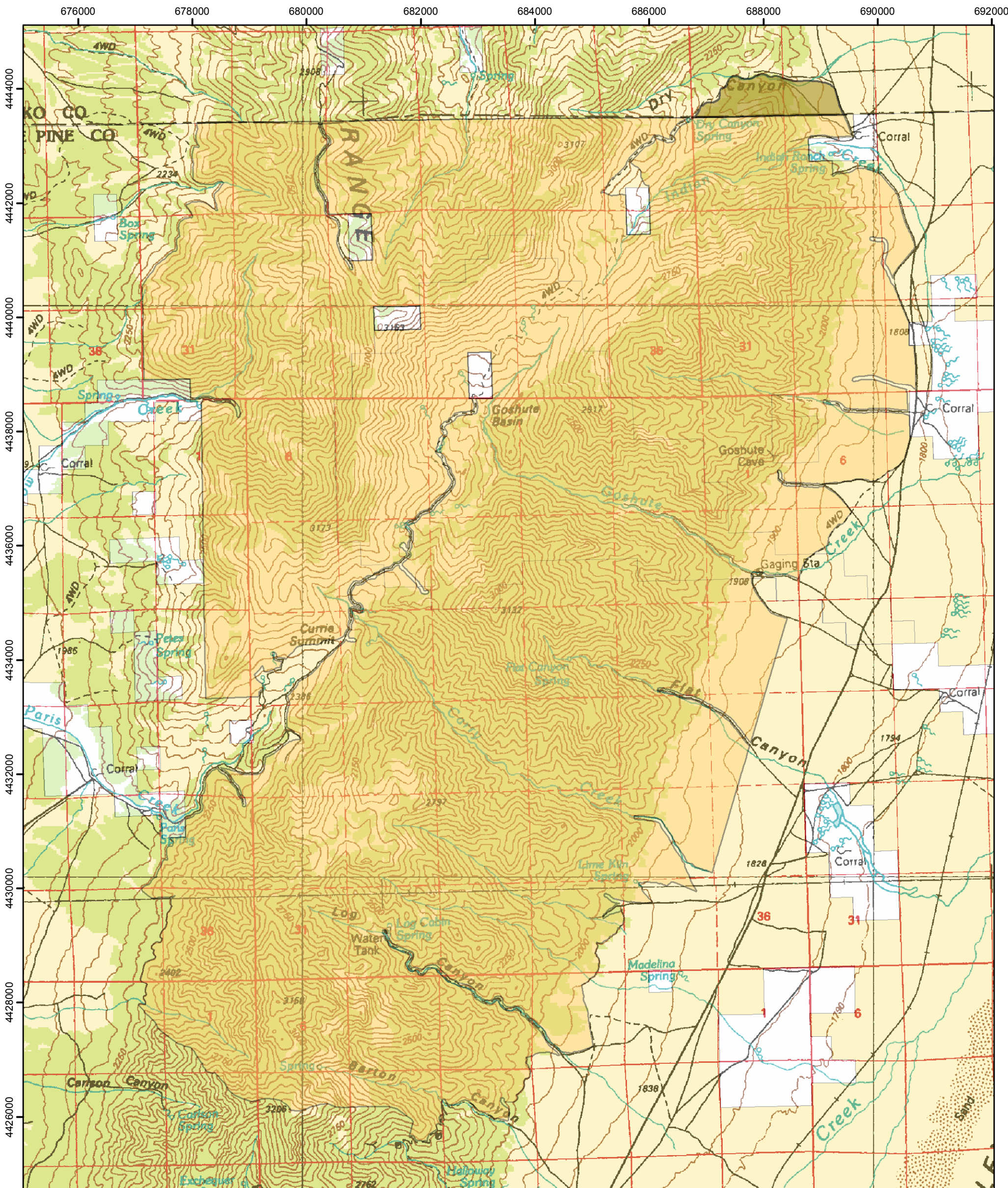
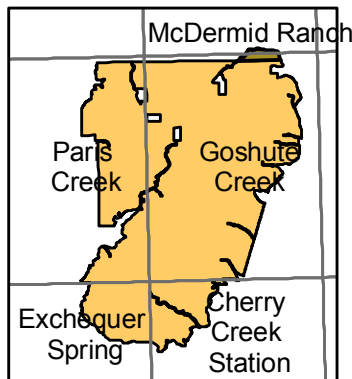




# Goshute Canyon Wilderness Area



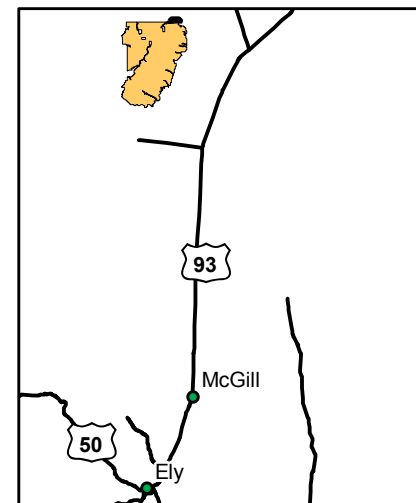
1:24,000's



Ely BLM Field Office  
 For more information call:  
 (775) 289-1800

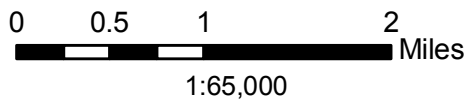


No Warranty is made by the Bureau of Land Management as to the accuracy, reliability, or completeness of these data for individual use or aggregate use with other data.



**Legend**

- Wilderness Area
- Wilderness Study Area



1:65,000

BLM 1:100,00 Maps:  
 Kern Mountains &  
 Currie



# FACT Sheet

BUREAU OF LAND MANAGEMENT

ELY FIELD OFFICE (Tel: 775-289-1800)  
HC Box 33500, Ely, Nevada 89301-9408

## Goshute Canyon Wilderness Area

42,543 acres

Elevation 6,000 – 10,410 ft

### Location

The Goshute Canyon Wilderness Area is located in the Cherry Creek Mountains in East-Central Nevada within White Pine and Elko Counties approximately 50 miles north of Ely, Nevada.



### Getting There

Access to the Goshute Canyon Wilderness Area from Ely is via federal highway 93 northbound approximately 50 miles; turn west onto state route 489 towards the town of Cherry Creek. Turn north onto County road 25, this dirt road runs east of the eastern boundary of Goshute Canyon.



### Area Description

The Goshute Canyon Wilderness Area lies in the Cherry Creek Range. The 11 mile long Wilderness Area is a rugged, uplifted range, with massive white limestone cliffs jutting from its slopes. The lower elevations are thickly forested by pinyon pine and juniper, while scattered bristlecone and limber pine occur at the higher elevations. Aspens and cottonwoods in the moist drainages provide for a cool retreat. Large high elevation basins rimmed by peaks contain pockets of aspen and white fir and are filled with wild flowers in the spring and summer. Snowmelt and numerous springs provide riparian settings and water sources for a great number of wildlife species including Bonneville cutthroat trout in Goshute Creek, mule deer, mountain lions, bobcats, and various birds of prey.

There are outstanding opportunities for primitive forms of recreation in the Goshute Canyon Wilderness Area. Goshute Cave is an extensive limestone solution cave that offers excellent opportunities for caving and geological study. The cave is rich in formations and relatively well preserved although nearly 100 years of visitation has led to some deterioration.

### Additional Information

Signs indicating "Wilderness" and "Closed Road" or "Closed Route" are placed at various intervals. Vehicles can be parked outside the wilderness boundary. Mechanized and motorized vehicles are **NOT PERMITTED** in a wilderness area.

Hunting, fishing, and trapping are allowed under state and local laws. Pets are allowed, but please keep your pets under control at all times. Horses are permitted, however you may need to carry feed. Removal, disturbance, or attempting to remove archaeological materials is a felony. Selling, receiving, purchasing, transporting, exchanging or offering to do so is prohibited by law.

Camping is permitted, limited to 14 days. After 14 days campers must relocate at least 25 miles from previous site (*interim policy, until wilderness planning is complete*). Gathering wood for campfires, when permitted, is limited to dead and down material. Live vegetation cannot be cut.

Please help preserve Nevada's fragile environments, park your vehicle or set up camp in previously used sites, minimize impacts by practicing Leave No Trace ethics. Contact Ely Bureau of Land Management Field Office for current weather, road conditions, and hazards.

### Maps

USGS 7.5 Quadrangle Maps:	BLM 1:100,000 Maps:
McDermid Ranch	Kern Mountains
Paris Creek	Currie
Goshute Creek	
Exchequer Station	
Cherry Creek Station	

### Contact Info:

Ely BLM Field Office  
Phone: 775-289-1800  
[www.nv.blm.gov/Ely](http://www.nv.blm.gov/Ely)

