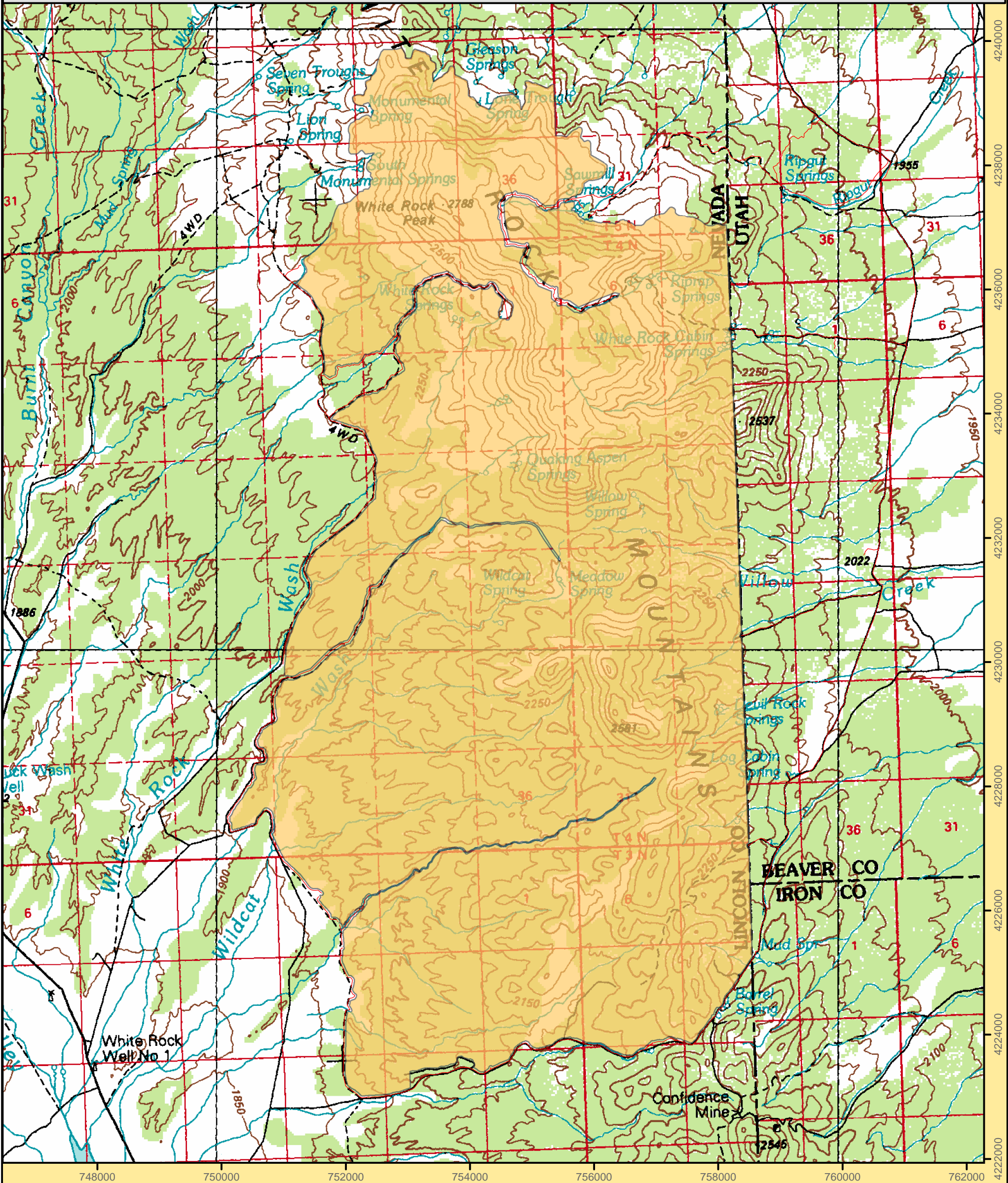


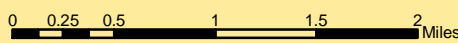
# White Rock Range Wilderness Area



| Wilson Creek Range<br>1:100,000  |                           |
|----------------------------------|---------------------------|
| Miller Canyon<br>1:2400          | Gleason Basin<br>1:2400   |
| Buck Wash Well<br>1:2400         | White Rock Peak<br>1:2400 |
| Eagle Valley Reservoir<br>1:2400 | Rice Mountain<br>1:2400   |

**Legend**

Wilderness Boundary



1:60,000

Projection: Nad 83 Zone 11 North

Ely BLM Field Office  
December 2004  
For more information call 775-289-1800

U. S. Department of the Interior  
Bureau of Land Management

"NO WARRANTY IS MADE BY THE BUREAU OF LAND MANAGEMENT AS TO THE ACCURACY, RELIABILITY, OR COMPLETENESS OF THESE DATA FOR INDIVIDUAL USE OR AGGREGATE USE WITH OTHER DATA."



# FACT Sheet

BUREAU OF LAND MANAGEMENT

ELY FIELD OFFICE (Tel: 775-289-1800)  
HC Box 33500, Ely, Nevada 89301-9408

## White Rock Range Wilderness

24,413 acres

Elevation 6,320 – 9,146 ft

### Location

The White Rock Range is located in eastern Lincoln County on the Nevada-Utah border. The town of Ursine, Nevada is approximately 15 miles to the southwest and Pioche, Nevada is approximately 25 miles further to the southwest.

### Getting There

Access to this Wilderness area is east via the Mt. Wilson Scenic Byway from either Pony Springs or Pioche.

### Area Description

The White Rock Wilderness is a rarely visited pristine mountain range with gently rolling foothills covered in sagebrush, pinyon pine and juniper, and scattered ponderosa pines. Numerous side canyons and drainages dissect the north-south trending range while a high, windswept plateau covered with aspens and pockets of white fir lies toward the northern end of the area and stretches toward the 9,146 foot White Rock Peak.

Numerous springs along with two high mountain lakes having intermittent water support grassy meadows and lush riparian vegetation important to the elk and mule deer in the area. Colorful volcanic boulders and strangely eroded volcanic ash and columnar peaks jut out over the trees and provide excellent photographic opportunities for visitors. Solitude and primitive recreational opportunities are easy to find in this wilderness area with its varied topography and remoteness.

### Additional Information

Signs indicating “Wilderness” and “Closed Road” or “Closed Route” are placed at various intervals. Vehicles can be parked outside the wilderness boundary; however, the boundary is set back 100 feet on roads.

Mechanized and motorized vehicles are **NOT PERMITTED** in a wilderness area.

Hunting, fishing, and non-commercial trapping are allowed under state and local laws. Pets are allowed, but please keep your pets under control at all times. Horses are permitted, however you may need to carry feed. Removal, disturbance, or attempting to remove archaeological materials is a felony. Selling, receiving, purchasing, transporting, exchanging or offering to do so is prohibited by law.

Camping is permitted, limited to 14 days. After 14 days campers must relocate at least 25 miles from previous site (*interim policy, until wilderness planning is complete*). Gathering wood for campfires, when permitted, is limited to dead and down material. Live vegetation cannot be cut.

Please help preserve Nevada’s fragile environments, park your vehicle or set up camp in previously used sites, minimize impacts by practicing Leave No Trace ethics.

Contact Ely Bureau of Land Management Field Office for current weather, road conditions, and hazards.

### Maps

USGS 7.5 Quadrangle Maps: Gleason Basin, Buck Wash Well, White Rock Peak, Rice Mountain



### Contact Info:

Ely BLM Field Office

Phone: 775-289-1800

[www.nv.blm.gov/Ely](http://www.nv.blm.gov/Ely)