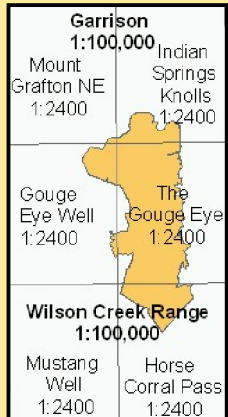
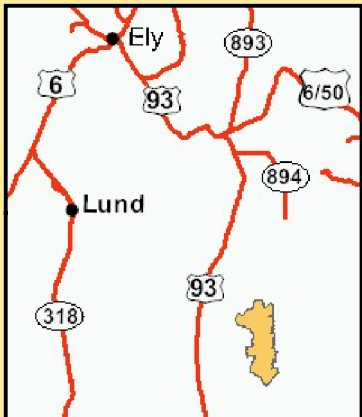
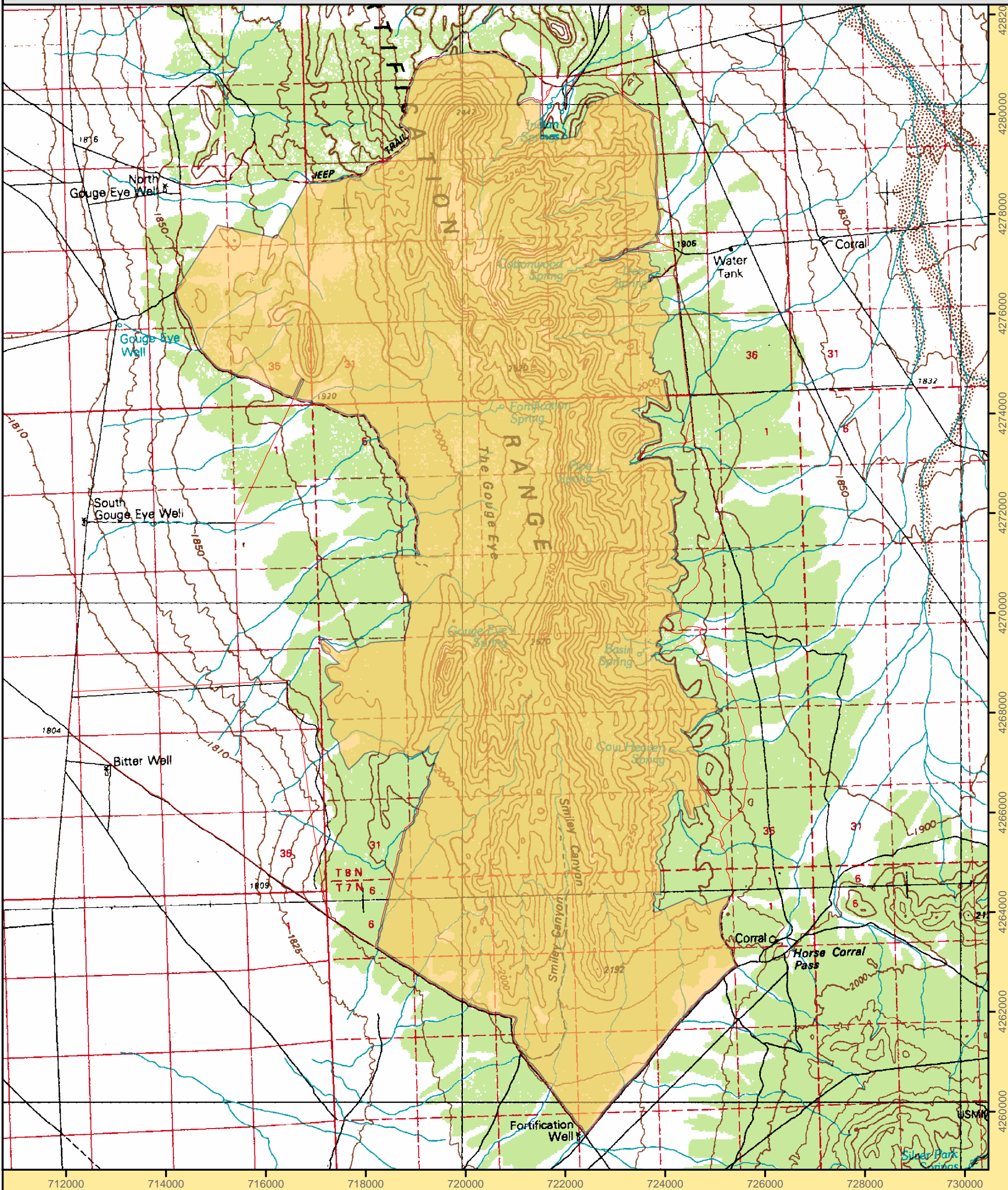
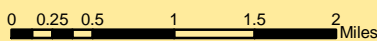


Fortification Range Wilderness Area



Legend

Wilderness Boundary



1:75,000

Projection: Nad 83 Zone 11 North

Ely BLM Field Office
December 2004
For more information call 775-289-1800

U. S. Department of the Interior
Bureau of Land Management

"NO WARRANTY IS MADE BY THE BUREAU OF LAND MANAGEMENT AS TO THE ACCURACY, RELIABILITY, OR COMPLETENESS OF THESE DATA FOR INDIVIDUAL USE OR AGGREGATE USE WITH OTHER DATA."



FACT Sheet

BUREAU OF LAND MANAGEMENT

ELY FIELD OFFICE (Tel: 775-289-1800)
HC Box 33500, Ely, Nevada 89301-9408

Fortification Range Wilderness

30,656 acres

Elevation 6,150 – 8,268 ft

Location

The Fortification Range Wilderness is located in northern Lincoln County near the White Pine County border, approximately 50 miles southeast of Ely.

Getting There

Access to this Wilderness from Ely is south on federal highway 93. 19 miles past the intersection of federal highways 6, 50, and 93 turn left onto county road 47 which merges into county road 457. This county road runs along the eastern boundary of the Fortification Range Wilderness.



Area Description

The 13.5 mile long Fortification Range is a low mountain range composed almost entirely of volcanic materials (tuffs and tuffaceous breccia). Most of the range is comprised of gentle ridges, however, the north end becomes very rugged and precipitous (elevations over 8,000') where the rock has been eroded into sheer cliffs and massive outcrops. These spectacular formations and cliffs for which the range was named form a huge natural amphitheater at the head of the Cottonwood Canyon drainage. Scattered ponderosa pine, pinyon, juniper, aspen and cottonwood are found in the northern portion of the unit while the southern portion of the unit is densely forested by pinyon and juniper. Wildlife within the wilderness includes mule deer, antelope, mountain lions, and raptors.

Outstanding opportunities for primitive recreation exist within the Fortification Range Wilderness including hiking, camping, backpacking, photography, nature study, horseback riding, and hunting. Opportunities for observing the geology are abundant with multi-hued pink sculpted rock formations, and dazzling white spires only a short hike from the northeastern boundary.

Additional Information

Signs indicating "Wilderness" and "Closed Road" or "Closed Route" are placed at various intervals. Vehicles can be parked outside the wilderness boundary; however, the boundary is set back 100 feet on roads.

Mechanized and motorized vehicles are **NOT PERMITTED** in a wilderness area.

Hunting, fishing, and non-commercial trapping are allowed under state and local laws. Pets are allowed, but please keep your pets under control at all times. Horses are permitted, however you may need to carry feed. Removal, disturbance, or attempting to remove archaeological materials is a felony. Selling, receiving, purchasing, transporting, exchanging or offering to do so is prohibited by law. Camping is permitted, limited to 14 days. After 14 days campers must relocate at least 25 miles from previous site (*interim policy, until wilderness planning is complete*). Gathering wood for campfires, when permitted, is limited to dead and down material. Live vegetation cannot be cut.

Please help preserve Nevada's fragile environments, park your vehicle or set up camp in previously used sites, minimize impacts by practicing Leave No Trace ethics.

Contact Ely Bureau of Land Management Field Office for current weather, road conditions, and hazards.

Maps

USGS 7.5 Quadrangle Maps: Mount Grafton NE, Indian Springs Knolls, Gouge Eye Well, The Gouge Eye, Horse Corral Pass



Contact Info:

Ely BLM Field Office

Phone: 775-289-1800

www.nv.blm.gov/Ely